



## Lessard-Sams Outdoor Heritage Council

### Conservation Partners Legacy Grant Program Phase 10: Statewide and Metro Habitat Laws of Minnesota 2018 Final Report

---

#### General Information

**Date:** 11/16/2022

**Project Title:** Conservation Partners Legacy Grant Program Phase 10: Statewide and Metro Habitat

**Funds Recommended:** \$11,589,000

**Legislative Citation:** ML 2018, Ch. 208, Art. 1, Sec. 2, subd 5(r )

**Appropriation Language:** \$11,589,000 the second year is to the commissioner of natural resources for a program to provide competitive matching grants of up to \$400,000 to local, regional, state, and national organizations for enhancing, restoring, or protecting forests, wetlands, prairies, or habitat for fish, game, or wildlife in Minnesota. Of this amount, up to \$2,567,000 is for grants in the seven-county metropolitan area and cities with a population of 50,000 or greater. Grants must not be made for activities required to fulfill the duties of owners of lands subject to conservation easements. Grants must not be made from the appropriation in this paragraph for projects that have a total project cost exceeding \$575,000. Of the total appropriation, \$536,000 may be spent for personnel costs and other direct and necessary administrative costs. Grantees may acquire land or interests in land. Easements must be permanent. Grants may not be used to establish easement stewardship accounts. Land acquired in fee must be open to hunting and fishing during the open season unless otherwise provided by law. The program must require a match of at least ten percent from nonstate sources for all grants. The match may be cash or in-kind resources. For grant applications of \$25,000 or less, the commissioner must provide a separate, simplified application process. Subject to Minnesota statutes, the commissioner of natural resources must, when evaluating projects of equal value, give priority to organizations that have a history of receiving, or a charter to receive, private contributions for local conservation or habitat projects. If acquiring land in fee or a conservation easement, priority must be given to projects associated with or within one mile of existing wildlife management areas under Minnesota Statutes, section 86A.05, subdivision 8; scientific and natural areas under Minnesota Statutes, sections 84.033 and 86A.05, subdivision 5; or aquatic management areas under Minnesota Statutes, sections 86A.05, subdivision 14, and 97C.02. All restoration or enhancement projects must be on land permanently protected by a permanent covenant ensuring perpetual maintenance and protection of restored and enhanced habitat, by a conservation easement or by public ownership, or in public waters as defined in Minnesota Statutes, section 103G.005, subdivision 15. Priority must be given to restoration and enhancement projects on public lands. Minnesota Statutes, section 97A.056, subdivision 13, applies to grants awarded under this paragraph. This appropriation is available until June 30, 2022. No less than five percent of the amount of each grant must be held back from reimbursement until the grant recipient has completed a grant accomplishment report by the deadline and in the form prescribed by and satisfactory to the Lessard-Sams Outdoor Heritage Council. The commissioner must provide notice of the grant program in the summary of game and fish law prepared under Minnesota Statutes, section 97A.051, subdivision 2.

## Manager Information

**Manager's Name:** Kathy Varble

**Title:** CPL Program Coordinator

**Organization:** MN DNR

**Address:** 500 Lafayette Road Box 20

**City:** St. Paul, MN 55155

**Email:** jessica.lee@state.mn.us

**Office Number:** 651-259-5233

**Mobile Number:**

**Fax Number:**

**Website:**

## Location Information

**County Location(s):** Aitkin, Martin, Itasca, Kanabec, Faribault, Fillmore, Chisago, St. Louis, Olmsted, Carver, Wright, Hennepin, Otter Tail, Washington, Ramsey, Morrison, Lake, Cook, Sibley, Sherburne, Scott, Crow Wing, Rice, Marshall, Isanti, Todd, Dodge, Meeker, Lac qui Parle, Kandiyohi, Hubbard, Becker, Winona, Pennington, Goodhue, Clearwater, Roseau, Kittson, Pine, McLeod, Le Sueur, Dakota, Carlton, Mower and Anoka.

### Eco regions in which work will take place:

- Northern Forest
- Forest / Prairie Transition
- Prairie
- Metro / Urban
- Southeast Forest

### Activity types:

- Protect in Easement
- Protect in Fee
- Restore
- Enhance

### Priority resources addressed by activity:

- Wetlands
- Prairie
- Forest
- Habitat

## Narrative

### Summary of Accomplishments

As of 11/1/2022, the CPL program has provided over 900 grants totaling \$109 million to over 200 different grantee organizations, improving or protecting over 339,000 acres of habitat. Demand for CPL grants has continued to grow each year as new applicants hear about the program and successful grantees return. In ML 2018 there were 107 grants awarded- 18 metro grants, 20 traditional grants, and 69 Expedited Conservation Partners grants. Through these 107 grants, over 18,000 acres were restored, enhanced, or protected. Over \$11M was awarded to organizations for projects.

## Process & Methods

The CPL program fulfills MS 97a.056 Subd. 3a, directing LSOHC to establish a conservation partner's grant program encouraging/supporting local conservation efforts. \$11,053,000 was available for grants. Of this amount, up to \$2,567,000 was used for projects in the 7-county metro area and in cities with a population of 50,000 people or greater. This is a stand-alone program, but depends on support/technical advice from public land managers and habitat and acquisition specialists.

Grant activities included enhancement, restoration and protection of forests, wetlands, prairies, and habitat for fish, game, or wildlife in Minnesota. A 10% match from non-state sources is required for all grants, and may be in-kind or cash. Applicants described the project, location, activity, habitat, benefit, etc. For acquisition projects, applicants described the parcel selection process. CPL Staff developed an RFP incorporating LSOHC priorities. Staff worked with applicants to submit applications, oversaw grant selection, prepared/executed grant documents, reviewed expenditures, approved payments/reports, monitored work, and assisted recipients with close-out. Staff complies with Office of Grants Management policies.

The CPL program has 3 annual grant cycles- Traditional, Metro, and Expedited Conservation Projects (ECP). The Traditional and Metro cycles had one grant round beginning August 2017. Projects under \$25,000 will have a simplified application. The ECP grant cycle had two rounds of funding.

CPL staff reviewed applications for completeness. Technical Review Committees, comprised of habitat experts across the state and approved by the DNR Commissioner, reviewed and scored Traditional and Metro applications based on evaluation criteria (see attached). The DNR Directors of Fish and Wildlife, Eco Waters, and Forestry reviewed the committee's recommendations and provide a final ranking to the Commissioner. Funding decisions were made by the Commissioner's office. ECP grants are reviewed by CPL staff and DNR habitat experts using established criteria. The Director of Fish and Wildlife made final funding decisions for ECP.

Grantees were required to submit annual and final accomplishment reports. Grantees were paid on a reimbursement or "for services rendered" basis, meaning payment is made to the grantee after work has been performed. Proof that the vendor was paid must be submitted to staff before additional payments are made. Funds were advanced for acquisitions to accommodate cash flow needs.

### CPL Administration Budget:

Administration costs of \$137,400 include salary/fringe, direct support services, travel, supplies, outreach, ongoing application system/database maintenance, and other professional services.

### **How did the program address habitats of significant value for wildlife species of greatest conservation need, threatened or endangered species, and/or list targeted species?**

All CPL project requests included a Natural Heritage Database Review, which addresses wildlife species of greatest conservation need, the MN County Biological Survey data, and/or rare, threatened and endangered species inventories.

### **How did the program use science-based targeting that leveraged or expanded corridors and complexes, reduced fragmentation, or protected areas in the MN County Biological Survey.**

The CPL program has a Technical Review Committee that reviews and evaluates projects for sound conservation science.

## **Explain Partners, Supporters, & Opposition**

CPL works with partners all over the state, including non-profit organizations and local, state, and federal units of government. There were over 60 partners that were awarded grants through CPL this year. Many LGUs were awarded funding as well as NGOs of all sizes. There were many new LGUs in the seven county metro area that applied this year, likely because ECP became more accessible to more organizations in 2018. The partners of the CPL program continually exceed our match requirements and expectations. Though the grantees are responsible for a 10% match, we often see a far higher amount reported. The match frequently comes from community volunteers that are engaged in the projects and conservation partners that are working with grantees to accomplish the goals of the projects.

## **Exceptional challenges, expectations, failures, opportunities, or unique aspects of program**

CPL is unique because the program works with over 200 organizations throughout the state. CPL also requires local investment in projects of at least 10% of the grant award. The entire \$11.05M was awarded for projects. Nearly \$2M was unspent of the total funding due to continuing challenges with staffing due to COVID, the drought in 2021 and 2022, and several acquisitions that fell through. The Nature Conservancy had a \$400,000 acquisition that wasn't completed with CPL funds due to a higher than expected appraisal, Pheasants Forever was unable to complete two small acquisitions and came in under budget on several grants returning over \$400,000, and Fox Lake Conservation League was unable to complete two large acquisitions and a wetland restoration, returning over \$600,000. The remaining amount that was unspent was split between many partners.

## **What other fund may contribute to this program?**

- N/A

## **What is the plan to sustain and/or maintain this work after the Outdoor Heritage Funds are expended?**

Successful applicants include long term maintenance plans in their applications, which are considered greatly by the technical review committees.

## Budget

### Totals

Item	Requested	AP Amount	Spent	Antic. Leverage	Received Leverage	Leverage Source	Original Total	Final Total
Personnel	\$400,000	\$400,000	\$120,200	-	-	-	\$400,000	\$120,200
Contracts	\$11,053,000	\$11,053,000	\$9,110,800	\$623,500	\$1,666,600	local match	\$11,676,500	\$10,777,400
Fee Acquisition w/ PILT	-	-	-	-	-	-	-	-
Fee Acquisition w/o PILT	-	-	-	-	-	-	-	-
Easement Acquisition	-	-	-	-	-	-	-	-
Easement Stewardship	-	-	-	-	-	-	-	-
Travel	\$50,000	\$50,000	\$400	-	-	-	\$50,000	\$400
Professional Services	\$40,000	\$40,000	\$5,800	-	-	-	\$40,000	\$5,800
Direct Support Services	\$36,000	\$36,000	\$10,100	-	-	-	\$36,000	\$10,100
DNR Land Acquisition Costs	-	-	-	-	-	-	-	-
Capital Equipment	-	-	-	-	-	-	-	-
Other Equipment/Tools	-	-	-	-	-	-	-	-
Supplies/Materials	\$10,000	\$10,000	\$900	-	-	-	\$10,000	\$900
DNR IDP	-	-	-	-	-	-	-	-
<b>Grand Total</b>	<b>\$11,589,000</b>	<b>\$11,589,000</b>	<b>\$9,248,200</b>	<b>\$623,500</b>	<b>\$1,666,600</b>	<b>-</b>	<b>\$12,212,500</b>	<b>\$10,914,800</b>

### Personnel

Position	Annual FTE	Years Working	Funding Request	Antic. Leverage	Leverage Source	Total
Grants Specialist Coordinator	1.0	2.0	\$85,000	-	-	\$85,000
Grants Specialist	1.0	2.0	\$33,200	-	-	\$33,200
NR Specialist	0.5	2.0	\$2,000	-	-	\$2,000

### Direct Support Services

**How did you determine which portions of the Direct Support Services of your shared support services is direct to this program?**

DNR's D&N Calculator

**Explain any budget challenges or successes:**

There were several large acquisitions that fell through (listed in the project narrative), and many projects came in under budget. Some grantees are still trying to catch up from COVID delays and a drought and were unable to complete all parts of their projects. A couple of projects were cancelled and re-applied for because of timing issues and project manager changes. Personnel, travel, and direct support services also came in under budget.

**Total Revenue:** \$0

**Revenue Spent:** \$0

**Revenue Balance:** \$0

**Of the money disclosed above, what are the appropriate uses of the money:**

## Output Tables

### Acres by Resource Type (Table 1)

Type	Wetland (AP)	Wetland (Final)	Prairie (AP)	Prairie (Final)	Forest (AP)	Forest (Final)	Habitat (AP)	Habitat (Final)	Total Acres (AP)	Total Acres (Final)
Restore	0	59	0	955	0	5,475	0	2,656	0	9,145
Protect in Fee with State PILT Liability	0	0	0	61	0	640	0	126	0	827
Protect in Fee w/o State PILT Liability	0	0	0	0	0	240	0	54	0	294
Protect in Easement	0	0	0	0	0	0	0	0	0	0
Enhance	0	389	0	4,204	0	1,293	0	1,858	0	7,744
<b>Total</b>	<b>0</b>	<b>448</b>	<b>0</b>	<b>5,220</b>	<b>0</b>	<b>7,648</b>	<b>0</b>	<b>4,694</b>	<b>0</b>	<b>18,010</b>

### Total Requested Funding by Resource Type (Table 2)

Type	Wetland (AP)	Wetland (Final)	Prairie (AP)	Prairie (Final)	Forest (AP)	Forest (Final)	Habitat (AP)	Habitat (Final)	Total Funding (AP)	Total Funding (Final)
Restore	-	\$152,600	-	\$1,517,000	-	\$957,400	-	\$2,107,600	-	\$4,734,600
Protect in Fee with State PILT Liability	-	-	-	\$338,200	-	\$386,900	-	\$417,700	-	\$1,142,800
Protect in Fee w/o State PILT Liability	-	-	-	-	-	\$226,400	-	\$469,700	-	\$696,100
Protect in Easement	-	-	-	-	-	-	-	-	-	-
Enhance	-	\$289,600	-	\$1,184,300	-	\$615,100	-	\$585,700	-	\$2,674,700
<b>Total</b>	<b>-</b>	<b>\$442,200</b>	<b>-</b>	<b>\$3,039,500</b>	<b>-</b>	<b>\$2,185,800</b>	<b>-</b>	<b>\$3,580,700</b>	<b>-</b>	<b>\$9,248,200</b>

### Acres within each Ecological Section (Table 3)

Type	Metro / Urban (AP)	Metro / Urban (Final)	Forest / Prairie (AP)	Forest / Prairie (Final)	SE Forest (AP)	SE Forest (Final)	Prairie (AP)	Prairie (Final)	N. Forest (AP)	N. Forest (Final)	Total (AP)	Total (Final)
Restore	0	4,603	0	122	0	182	0	2,614	0	1,624	0	9,145
Protect in Fee with State PILT Liability	0	0	0	0	0	0	0	93	0	734	0	827
Protect in Fee w/o State PILT Liability	0	0	0	0	0	10	0	0	0	284	0	294
Protect in Easement	0	0	0	0	0	0	0	0	0	0	0	0
Enhance	0	2,171	0	443	0	15	0	3,486	0	1,629	0	7,744
<b>Total</b>	<b>0</b>	<b>6,774</b>	<b>0</b>	<b>565</b>	<b>0</b>	<b>207</b>	<b>0</b>	<b>6,193</b>	<b>0</b>	<b>4,271</b>	<b>0</b>	<b>18,010</b>

**Total Requested Funding within each Ecological Section (Table 4)**

Type	Metro / Urban (AP)	Metro/Urban (Final)	Forest / Prairie (AP)	Forest / Prairie (Final)	SE Forest (AP)	SE Forest (Final)	Prairie (AP)	Prairie (Final)	N. Forest (AP)	N. Forest (Final)	Total (AP)	Total (Final)
Restore	-	\$2,311,400	-	\$204,400	-	\$306,200	-	\$836,400	-	\$1,076,200	-	\$4,734,600
Protect in Fee with State PILT Liability	-	-	-	-	-	-	-	\$599,100	-	\$543,700	-	\$1,142,800
Protect in Fee w/o State PILT Liability	-	-	-	-	-	\$72,200	-	-	-	\$623,900	-	\$696,100
Protect in Easement	-	-	-	-	-	-	-	-	-	-	-	-
Enhance	-	\$1,166,800	-	\$197,100	-	\$20,300	-	\$944,400	-	\$346,100	-	\$2,674,700
<b>Total</b>	-	<b>\$3,478,200</b>	-	<b>\$401,500</b>	-	<b>\$398,700</b>	-	<b>\$2,379,900</b>	-	<b>\$2,589,900</b>	-	<b>\$9,248,200</b>

**Target Lake/Stream/River Feet or Miles**

**Outcomes**

**Programs in forest-prairie transition region:**

- Other ~

**Programs in metropolitan urbanizing region:**

- Other ~

**Programs in the northern forest region:**

- Other ~

**Programs in prairie region:**

- Other ~

**Programs in southeast forest region:**

- Other ~

## Parcels

### Sign-up Criteria?

[Yes](#)

### Restore / Enhance Parcels

Name	County	TRDS	Acres	Est Cost	Existing Protection
Anoka Conservation District Gordie Mikkelson WMA prairie enhancement	Anoka	03322208	11	\$26,050	Yes
NWTF-Lake Area Gobblers Detroit Lakes - Park Rapids Tree Planting	Becker	13939218	64	\$25,153	Yes
City of Detroit Lakes Sucker Creek Preserve Project	Becker	13841212	50	\$4,970	Yes
Becker County Dry Dock Lake Outlet Channel Restoration	Becker	13841209	1	\$21,815	Yes
Forest Stewards Guild Returning Fire to a Fire-dependent Pine Ecosystem	Carlton	04917231	166	\$49,357	Yes
Carlton County Land Department Forest Opening Reclamation and Pollinator Project	Carlton	04817221	7	\$1,138	Yes
Minnesota Landscape Arboretum MN Landscape Arboretum Wetland Restoration	Carver	11623217	7	\$28,535	Yes
Minnesota Valley Trust, Inc. Rapids Lake Unit Habitat Restoration Phase 2	Carver	11524225	140	\$202,126	Yes
Minnesota Land Trust Clearwater County Wetland Restoration #2	Clearwater	14837204	199	\$91,838	Yes
Cook Soil and Water Conservation District Reconnecting Coldwater Habitat in Fredenberg Creek	Cook	05805202	1	\$250,532	Yes
Sugarloaf: The North Shore Stewardship Association North Shore Forest Restoration	Cook	06202133	206	\$186,451	Yes
Minnesota Deer Hunters Association Pillsbury SF Planting-Phase II	Crow Wing	13532216	348	\$42,867	Yes
Ruffed Grouse Society Oak regeneration - Meadowbrook WMA	Crow Wing	13531223	104	\$36,681	Yes
Rollie Johnson Natural and Recreational Area Rollie Johnson Islands Restoration	Crow Wing	13728217	30	\$18,000	Yes
Dakota County Holland Lake Shoreline and Upland Restoration	Dakota	02723235	40	\$100,490	Yes
Friends of the Mississippi River Habitat Creation in Dakota County Metro	Dakota	11318206	184	\$287,887	Yes
Dakota County Whitetail Woods Prairie Reconstruction	Dakota	11419210	14	\$36,150	Yes
Dakota County Parks Park Conservation Area Wetland Restoration	Dakota	11420235	10	\$42,050	Yes
Dakota County Parks Miesville Bluff Restoration Phase III	Dakota	11317226	72	\$354,184	Yes
Pheasants Forever Pheasants Forever WMA Enhancements	Dodge	10717225	71	\$36,186	Yes
Faribault County SWCD Maple River Swenson Water Quality	Faribault	10426210	45	\$15,000	Yes
Pheasants Forever Friends of Windom #2	Faribault	10327217	76	\$40,319	Yes
Florence Township Valhalla Park Restoration	Goodhue	11213212	4	\$50,000	Yes
Cannon Valley Trail Native Prairie Improvement Project - CVT	Goodhue	11217208	15	\$20,315	Yes
Minnesota Land Trust Lake Pepin Conservation Easement Restoration	Goodhue	11313231	135	\$155,393	Yes
Three Rivers Park District Elm Creek - East	Hennepin	12022225	166	\$257,028	Yes



Prairies					
Three Rivers Park District Three Rivers Enhancements - Phase II	Hennepin	12023219	1,350	\$363,995	Yes
Wood Lake Nature Center Wood Lake Nature Center Prairie Resto Project 2	Hennepin	02824233	12	\$37,377	Yes
City of Golden Valley Basset Creek Nature Area Habitat Restoration	Hennepin	11821228	7	\$49,485	Yes
City of Bloomington Parkers Picnic Grounds Savanna Restoration Phase 1	Hennepin	02724223	20	\$134,000	Yes
Great River Greening Wood-Rill SNA - Forest Enhancement	Hennepin	11823235	25	\$74,516	Yes
Park Rapids Chapter-MDHA Forest Opening Enhancement State Forest	Hubbard	14136222	465	\$9,997	Yes
NWTF Tall Pine Toms Clay and Clover Forest Opening Enhancement	Hubbard	14234219	69	\$9,922	Yes
Pheasants Forever Spectacle Lake WMA Enhancement	Isanti	03625236	41	\$27,803	Yes
Ruffed Grouse Society Woodcock habitat - Grand Rapids area	Itasca	14326204	304	\$46,000	Yes
Minnesota Sharp-tailed Grouse Society (MSGs) Kroschel/Holy Cow WMA Brushland Enhancement	Kanabec	04222220	180	\$50,000	Yes
Pheasants Forever Florida Slough Diversity Seeding	Kandiyohi	12135227	58	\$44,620	Yes
Kandiyohi County Grass Lake Prairie Wetland Restoration	Kandiyohi	11935225	1,000	\$400,000	Yes
Pheasants Forever Kandiyohi County WMA Enhancement	Kandiyohi	11835215	131	\$39,442	Yes
Pheasants Forever Henjum Lake WPA Inter-Seeding	Kandiyohi	12136222	161	\$40,838	Yes
Pheasants Forever Ella Lake WPA Enhancements	Kandiyohi	11933221	60	\$43,956	Yes
Minnesota Deer Hunters Association RMEF/SCA Rx Burn Phase III	Kittson	15840219	342	\$50,000	Yes
Pheasants Forever Lac Qui Parle Valley School	Lac qui Parle	11943233	55	\$40,610	Yes
Lake County SWCD Invasives Management in Sawmill Creek Tributary	Lake	05707227	2	\$50,725	Yes
Ruffed Grouse Society Birch regeneration - Little Marais WMA	Lake	05706216	30	\$25,405	Yes
Superior National Forest/Lake Co. SWCD Pickerel Lake Riparian Restoration Project	Lake	06311224	8	\$2,664	Yes
City of Montgomery North Ridge Nature Area Restoration	Le Sueur	11223234	19	\$46,578	Yes
Le Sueur County Lake Washington Regional Park Restoration	Le Sueur	10926212	49	\$21,418	Yes
Red Lake Watershed District Agassiz Pool - Silt Removal D-11	Marshall	15641220	8	\$50,000	Yes
Pheasants Forever Friends of Windom #1	Martin	10231228	420	\$48,340	Yes
Fox Lake Conservation League, Inc. Tree Removal Martin County WMAs	Martin	10430207	30	\$50,000	Yes
McLeod SWCD Stahl's Lake Park Prairie Enhancement	McLeod	11730215	38	\$11,102	Yes
Pheasants Forever Meeker County WPA Enhancements	Meeker	12032209	176	\$48,789	Yes
Pheasants Forever Lake Harden WPA Enhancement	Meeker	11831236	97	\$48,706	Yes
The Nature Conservancy Landscape Scale Restoration Using Prescribed Fire	Morrison	13130201	3,652	\$50,000	Yes
Chapter 10 of the Izaak Walton League of	Mower	10217205	14	\$9,701	Yes

America Mower County WMA Restoration					
Pheasants Forever Fergus Falls WMD Tree Removal	Otter Tail	13344233	1,363	\$179,853	Yes
Minnesota Land Trust Restoring Prairie Pothole Wetlands & Grasslands #3	Otter Tail	13139217	121	\$160,768	Yes
Wildlife Forever Native Prairie Tree Removal Phase 2	Otter Tail	13142205	160	\$49,993	Yes
Wildlife Forever Coyour WMA Woody Removal	Otter Tail	13144233	240	\$50,000	Yes
Minnesota Sharp-tailed Grouse Society (MSGs) Pembina WMA Aspen Girdling	Pennington	15246212	12	\$49,200	Yes
Minnesota Deer Hunters Association Cloquet WL Area Buckthorn Control Supplement 3	Pine	04818232	439	\$48,901	Yes
Urban Roots Willowbrook Habitat Enhancement	Ramsey	02822204	40	\$47,176	Yes
Ramsey County Parks & Recreation Battle Creek Forest Restoration	Ramsey	02822201	55	\$82,240	Yes
Ramsey County Tamarack Nature Center Savanna Restoration	Ramsey	03022210	22	\$136,296	Yes
City of Saint Paul, Dept of Parks and Recreation Henry Park/Highwood Preserve Woodland Enhancement	Ramsey	02822214	29	\$67,809	Yes
Cannon River Watershed Partnership Prairie Creek WMA, Grassland Mgmt	Rice	11119225	445	\$50,000	Yes
Cannon River Watershed Partnership Big Woods Heritage Forest WMA - Phase I	Rice	11122223	60	\$47,222	Yes
Cannon River Watershed Partnership Phelps Lake WMA - Phase I	Rice	11122206	45	\$47,339	Yes
River Bend Nature Center Invasives Removal in Forest with Dwarf Trout Lily	Rice	10920204	54	\$69,134	Yes
Minnesota Deer Hunters Association Roseau County Brush Mowing	Roseau	16138234	418	\$36,209	Yes
Scott County Parks and Trails Scott County Regional Parks Prairie Enhancement	Scott	11322211	153	\$29,753	Yes
Minnesota Valley Trust, Inc. Habitat Enhancement MN Valley NW Refuge & WMD	Scott	11426222	1,332	\$321,768	Yes
Prior Lake-Spring Lake Watershed District Fish Lake Shoreline & Prairie Restoration Project	Scott	11422228	1	\$13,800	Yes
Great River Greening Goats as Grazers for Habitat Enhancement	Sherburne	03527227	80	\$45,509	Yes
Sherburne County Water Management for Migratory Birds	Sherburne	03528226	130	\$104,260	Yes
Sibley SWCD Arlington WMA Habitat Enhancement	Sibley	11327207	20	\$3,850	Yes
Sibley SWCD Rush River County Park Buckthorn Management	Sibley	11226215	11	\$24,890	Yes
Sibley SWCD Sigler WMA Habitat Enhancement	Sibley	11226232	8	\$3,993	Yes
Sibley SWCD Windot WMA Habitat Enhancement	Sibley	11229219	8	\$9,980	Yes
South St. Louis Soil & Water Conservation District Tischer Tributary 6.5 Restoration	St. Louis	05014202	6	\$368,577	Yes
North St. Louis SWCD North St. Louis County Weed Control for Wildlife	St. Louis	05518226	207	\$50,000	Yes
Pheasants Forever Quistorff WMA Tree Removal	Todd	12735204	31	\$42,967	Yes
City of Woodbury Ojibway Open Space Wildlife Habitat Restoration	Washington	02821217	95	\$370,466	Yes

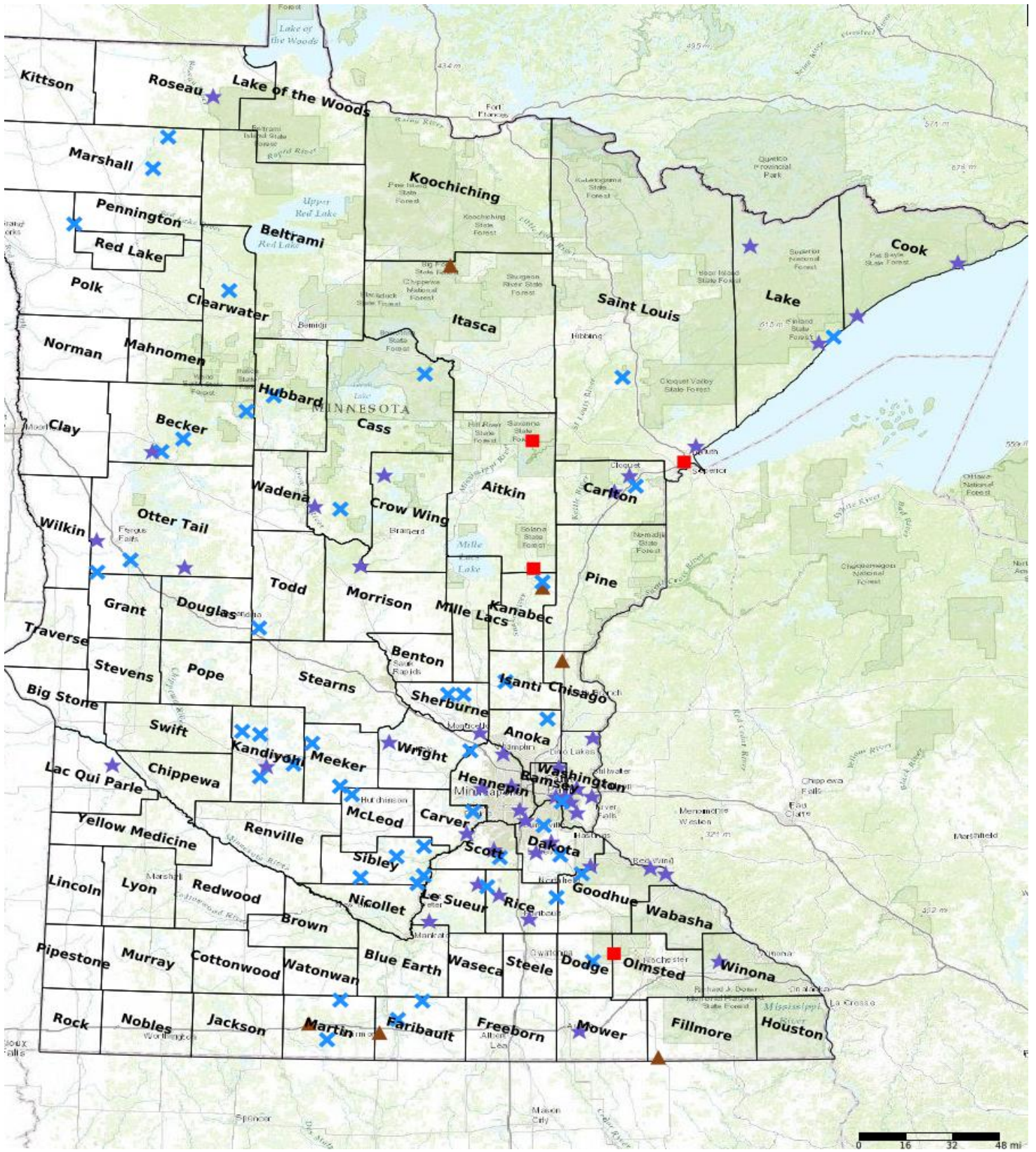
Washington County Eagle Point Lake Oak Savanna Restoration	Washington	02921222	17	\$49,997	Yes
Washington County Prairie Restoration for Rusty Patched Bumblebee	Washington	02921222	47	\$49,404	Yes
Great River Greening South Washington Conservation Corridor	Washington	02721203	19	\$28,200	Yes
City of Scandia Lilleskogen Park Restoration	Washington	03220214	9	\$29,047	Yes
Belwin Conservancy Lake Edith Habitat Restoration	Washington	02820204	130	\$163,159	Yes
National Wild Turkey Federation Whitewater WMA Ag Field-Prairie Conversion	Winona	10710225	33	\$36,904	Yes
Pheasants Forever Goose Lake WPA Enhancements	Wright	12028203	59	\$46,731	Yes
Wright County Parks Department Otsego Park Shoreline and Habitat Restoration	Wright	12123215	1	\$50,000	Yes

## Protect Parcels

Name	County	TRDS	Acres	Est Cost	Existing Protection
Aitkin County Land Department Cornish Impoundment _	Aitkin	05123226	40	\$61,400	No
Aitkin County Land Department Jewett Impoundment _	Aitkin	04323226	200	\$165,000	No
Pheasants Forever East Central CPL _	Chisago	03721219	34	\$81,376	No
Pheasants Forever Lake Guckeen WMA Addition _	Faribault	10228208	32	\$260,861	No
Pheasants Forever Beaver Creek WMA Addition _	Fillmore	10113227	15	\$69,375	No
Minnesota Deer Hunters Association MDHA Checker Board 1 _	Itasca	15025211	640	\$386,886	No
Minnesota Sharp-tailed Grouse Society (MSGs) Kroschel/Holy Cow WMA - Huddle Acquisition _	Kanabec	04222232	60	\$75,425	No
Fox Lake Conservation League, Inc. Martin County WMA Acquisition - Miller Parcel _	Martin	10332228	46	\$268,821	No
Olmsted County Oxbow Park Land Acquisition _	Olmsted	10715207	10	\$72,156	No
City of Duluth Merritt Creek Watershed Protection _	St. Louis	04914206	44	\$397,500	No



# Parcel Map



- Protect in Easement
- ▲ Protect in Fee with PILT
- Protect in Fee W/O PILT
- ★ Restore
- ✕ Enhance
- ⊕ Other