



## Lessard-Sams Outdoor Heritage Council

---

### Laws of Minnesota 2018 Accomplishment Plan

#### General Information

**Date:** 12/07/2021

**Project Title:** Mississippi Headwaters Habitat Corridor Project - Phase IV

**Funds Recommended:** \$2,998,000

**Legislative Citation:** ML 2018, Ch. 208, Art. 1, Sec. 2, subd 5(b)

**Appropriation Language:** \$2,073,000 the second year is to the commissioner of natural resources for agreements to acquire lands in fee and restore wildlife habitat in the Mississippi headwaters. Of this amount, \$73,000 is to the Mississippi Headwaters Board and \$2,000,000 is to The Trust for Public Land. \$925,000 the second year is to the Board of Water and Soil Resources to acquire lands in permanent conservation easements and to restore wildlife habitat, of which up to \$65,000 is for establishing a monitoring and enforcement fund as approved in the accomplishment plan and subject to Minnesota Statutes, section 97A.056, subdivision 17. A list of proposed acquisitions must be included as part of the required accomplishment plan.

**Additional Legislative Changes:** ML 2021, First Sp Session, Ch. 1, Art. 1, Sec. 2, Subd. 10 Carryforwards (a) The availability of the appropriations for the following projects is extended to June 30, 2022: (7) Laws 2018, chapter 208, article 1, section 2, subdivision 5, paragraph (b), for Mississippi Headwaters Habitat Corridor Project - Phase IV.

#### Manager Information

**Manager's Name:** Tim Terrill

**Title:** Executive Director

**Organization:** Mississippi Headwaters Board

**Address:** 322 Laurel St., Suite 11

**City:** Brainerd, MN 56401

**Email:** [timt@mississippiheadwaters.org](mailto:timt@mississippiheadwaters.org)

**Office Number:** 218-824-1189

**Mobile Number:**

**Fax Number:**

**Website:** [www.mississippiheadwaters.org](http://www.mississippiheadwaters.org)

#### Location Information

**County Location(s):** Aitkin, Morrison, Itasca, Crow Wing, Hubbard and Beltrami.

**Eco regions in which work will take place:**

- Northern Forest
- Forest / Prairie Transition

#### **Activity types:**

- Protect in Easement
- Protect in Fee

#### **Priority resources addressed by activity:**

- Prairie
- Forest

## **Narrative**

### **Abstract**

The Mississippi Headwaters Board (MHB) will work with the Board of Water & Soil Resources (BWSR), The Trust for Public Land (TPL), headwaters' counties and Soil & Water Conservation Districts (SWCDs) to protect and preserve targeted upland and aquatic habitats through fee title and permanent easement acquisition in high quality shoreland areas along the Mississippi River main stem, headwaters' reservoirs, and major Mississippi River tributaries.

### **Design and Scope of Work**

The Mississippi River is known as "America's River"--the longest river in North America and third longest in the world-with its headwaters in Minnesota. It provides drinking water and recreational opportunity for millions of people and it is the embodiment of Minnesota's outdoor traditions. Strategic and well-placed lands in public ownership is essential to maintaining hunting, fishing, and game habitat along the Mississippi River. Public lands adjacent to private property are in danger of losing habitat connectivity because of continued development pressures on private lands which result in further habitat fragmentation. Accessibility to high quality lands and shorelands is essential to ensuring memorable hunting, fishing, and recreational experiences along and within the Mississippi River Corridor. In addition, riparian corridors and tributaries are of particular value to resident and migrating wildlife populations, providing connectivity to multiple habitat types.

As loss of habitat in western Minnesota and the Dakotas occurs and climate change causes the drying up of existing wetlands the Mississippi flyway will take on a more important role. The Mississippi flyway is the longest migration route of any in the western hemisphere and, because it is well timbered and watered, it provides ideal support for migrating birds. The Mississippi Headwaters supports more than 350 species of animals, mammals, and birds and it is an important national treasure which must be preserved.

The MHB and partners will use targeted fee title land acquisitions and permanent conservation easements to accomplish the goals of this project. All fee title acquisitions will be approved by the local governmental unit where the property is located and the MHB. The Mississippi River and its connecting tributaries and headwaters' lakes are essential to wildlife, bird, and waterfowl transportation and sustainability. The MHB will work in partnership with TPL to protect targeted priority lands using fee title acquisitions and in partnership with the BWSR and SWCDs in

Clearwater, Beltrami, Hubbard, Cass, Itasca, Aitkin, Crow Wing, and Morrison counties to secure permanent Reinvest in Minnesota (RIM) conservation easements. Fee title acquisitions will protect against fragmentation of forest land and provide enhanced access to existing public land. Parcels identified as potential fee title acquisitions on the Mississippi River are shown on the attached map.

The MHB will administer, provide updated reports to the council, coordinate efforts, and develop a consistent process that utilizes county support to ensure that the program and spirit of this project is met. The Department of Natural Resources (DNR) or individual counties will hold the fee title acquisitions and the BWSR will hold the RIM easements. A local Project Technical Committee will review and rank potential acquisitions and easements.

Local support for this project was obtained from the MHB counties through resolutions of support. This funding builds on the current success of Phases I & II of the Mississippi Headwaters Habitat Corridor Project.

### **How does the plan address habitats that have significant value for wildlife species of greatest conservation need, and/or threatened or endangered species, and list targeted species?**

The first 400 miles of the Mississippi River--its headwaters--is historically a region of Minnesota with high quality fish and game habitat and is home to hundreds of species of wildlife, including many species of greatest conservation need and rare and endangered species identified through the MN County Biological Survey. Land conversion and forest fragmentation along the Mississippi River, its reservoirs and major tributaries in this headwaters region threaten the quality of fish and wildlife habitats and the connectivity of habitat complexes important for wildlife sustainability. Priority forest, wetland complexes, tributary confluences, strategic shorelands, and wild rice communities will be targeted for permanent conservation by this project to protect and maintain high quality habitat and insure habitat connectivity. This proposal will specifically protect habitat for these rare and endangered wildlife species: Blanding's Turtle, Gray wolf, Red Shoulder hawk, and the Northern Long Eared Bat.

### **Describe how the plan uses science-based targeting that leverages or expands corridors and complexes, reduces fragmentation or protects areas identified in the MN County Biological Survey:**

This project emphasizes high quality, riparian tracts adjacent to public land to target the best land suitable for habitat protection. A multi-benefit model developed by the Minnesota DNR was utilized by the North Central Conservation Roundtable (NCCR) to identify and prioritize fish and wildlife habitat areas along and within the Mississippi River headwaters corridor. The NCCR is a group of non-governmental organizations along with state and local agencies that meet quarterly to coordinate and develop strategy for the protection of upland and aquatic habitats in North Central Minnesota. In addition, the MHB's sub-watershed prioritization model will be utilized to identify public lands and key access points adjacent to critical habitat areas. Targeting private land adjacent to public land will help expand habitat corridors and complexes that currently exist. To select the best parcels for permanent protection the Project Technical Committee will utilize a ranking sheet of priority habitat features to score potential project parcels.

### **Which two sections of the Minnesota Statewide Conservation and Preservation Plan are most applicable to this project?**

- H2 Protect critical shoreland of streams and lakes

- H3 Improve connectivity and access to recreation

**Which two other plans are addressed in this program?**

- Mississippi River Headwaters Comprehensive Plan
- Outdoor Heritage Fund: A 25 Year Framework

**Which LSOHC section priorities are addressed in this program?**

**Forest / Prairie Transition**

- Protect, enhance, and restore wild rice wetlands, shallow lakes, wetland/grassland complexes, aspen parklands, and shoreland that provide critical habitat for game and nongame wildlife

**Northern Forest**

- Protect shoreland and restore or enhance critical habitat on wild rice lakes, shallow lakes, cold water lakes, streams and rivers, and spawning areas

**Does this program include leveraged funding?**

-

**Non-OHF Appropriations**

Year	Source	Amount
2016	Private	\$62,900

**How will you sustain and/or maintain this work after the Outdoor Heritage Funds are expended?**

The BWSR will be responsible for maintenance, inspection and monitoring into perpetuity of RIM conservation easements. The BWSR partners with local SWCDs to carry-out oversight, monitoring and inspection of its RIM conservation easements. Easements are inspected for the first five consecutive years beginning in the year after the easement is recorded. Thereafter, on-site inspections are performed every three years and compliance checks are performed in the other two years. SWCDs report to the BWSR on each site inspection conducted and partners’ staff document findings. A non-compliance procedure is implemented when potential violations or problems are identified. Perpetual monitoring and stewardship costs have been calculated at \$6,500 per easement. The amount listed for Easement Stewardship cover costs of the SWCD regular monitoring, BWSR oversight, and any enforcement necessary. The fee title to lands acquired by TPL will be transferred to either the Minnesota DNR or the county for permanent ownership and stewardship. Lands in county ownership will be managed utilizing individual county land management plans and lands in state (DNR) ownership will be monitored and managed according to a DNR management plan.

**Actions to Maintain Project Outcomes**

Year	Source of Funds	Step 1	Step 2	Step 3
2021	OHF	Work with landowners and agencies to determine interest and develop long term habitat priorities.	Utilize the RIM Easement Program and work with the BWSR and SWCDs to acquire, maintain, and monitor easements.	Perform on-site inspections for 5 consecutive years, and every 3 years thereafter.
2021	OHF	Work with landowners to determine interest and develop long term	Work with TPL to acquire parcels for fee title acquisitions.	Follow monitoring guidelines established by the DNR or counties (depending

		game, hunting and fishing priorities.		on ownership) to monitor acquired parcels.
--	--	---------------------------------------	--	--

## Activity Details

### Requirements

**If funded, this program will meet all applicable criteria set forth in MS 97A.056?**

Yes

**Will local government approval be sought prior to acquisition?**

Yes

**Is the land you plan to acquire (fee title) free of any other permanent protection?**

Yes

**Is the land you plan to acquire (easement) free of any other permanent protection?**

Yes

**Who will manage the easement?**

The SWCDs under contract to the BWSR.

**Who will be the easement holder?**

BWSR

### Land Use

**Will there be planting of any crop on OHF land purchased or restored in this program?**

Yes

**Explain what will be planted:**

The primary purposes of WMAs are to develop and manage for the production of wildlife and for compatible outdoor recreation. To fulfill those goals, the DNR may use limited farming specifically to enhance or benefit the management of state lands for wildlife.

Lands proposed to be acquired as WMAs may utilize farming to prepare previously farmed sites for native plant seeding. This is a standard practice across the Midwest. On a small percentage of WMAs (less than 2.5%), DNR uses farming to provide a winter food source for a variety of wildlife species in agriculture-dominated landscapes largely devoid of winter food sources.

**Are any of the crop types planted GMO treated?**

False

**Is this land currently open for hunting and fishing?**

No

**Will the land be open for hunting and fishing after completion?**

Yes

**Describe any variation from the State of Minnesota regulations:**

Land conveyed to the Dept. of Natural Resources or counties will fall under management plans that allow for hunting and fishing opportunities.

**Who will eventually own the fee title land?**

Either the Minnesota DNR or a county within the headwaters region.

**Will the eased land be open for public use?**

No

**Are there currently trails or roads on any of the proposed acquisitions?**

Yes

**Describe the types of trails or roads and the allowable uses:**

Informal trails on private property are typically used for personal access for hunting, fishing, and occasionally as remnants of forestry practices. This appropriation is funding a program that will have a parcel list identified at a later time. Roads or trails are typically excluded from easement areas if they serve no beneficial purpose to easement maintenance, monitoring, or enforcement. Existing trails or roads are identified during the easement acquisition process. Some roads and trails, such as agricultural field accesses, are allowed to remain.

**Will the trails or roads remain and uses continue to be allowed after OHF acquisition?**

Yes

**How will maintenance and monitoring be accomplished?**

Land that is in an easement will be maintained by the landowner, and will be involved in a scheduled monitoring program by the SWCD. Land that is in fee title ownership by the DNR will follow typical DNR management rules and monitoring plan. Land acquired by the county will follow a maintenance and monitoring plan developed by specific county forest resource plans. For easements, a parcel list of easements acquired will be identified at a later time. Roads or trails are typically excluded from the easement area if they serve no beneficial purpose to easement maintenance, monitoring, or enforcement. Existing trails or roads are identified during the easement acquisition process. Some roads and tails, such as agricultural field accesses, are allowed to remain.

**Will new trails or roads be developed or improved as a result of the OHF acquisition?**

Yes

**Describe the types of trails or roads and the allowable uses:**

On easements, though uncommon, there could be a potential for new trails may be developed, if they contribute to easement maintenance or benefit the easement site (e.g. firebreaks, berm maintenance, etc). Unauthorized trails identified during the monitoring process are in violation of the easement.

**How will maintenance and monitoring be accomplished?**

The easements secured under this project will be managed as part of the BWSR RIM Reserve Program that has over 6,500 easements currently in place. Easements are monitored annually for each of the first 5 years and then every 3rd year after that. BWSR, in cooperation with SWCDs, will implement a stewardship process to track, monitor quality and assure compliance with easement terms. Under the terms of the RIM easement program, landowners are required to maintain compliance with the easement. A conservation plan is developed with the landowner and maintained as part of each easement. Basic easement compliance

costs are borne by the landowner, periodic enhancements may be cost shared from a variety of sources. Lands acquired by counties will be managed utilizing individual county land management plans, and lands acquired by the DNR will be required to develop a management plan consistent with their division.

## Timeline

Activity Name	Estimated Completion Date
Partners- Landowner negotiations, due dilligence, acquire land and convey to State or County	6/30/21
SWCDs- Complete conservation easements applications	6/30/21
BWSR- Process and acquire easements through the RIM program.	6/30/21
DNR, Counties- Acquire and manage land for habitat	6/30/21
MHB- Coordination, administration, reporting	6/30/21

**Date of Final Report Submission:** 11/01/2021

## Budget

Budget reallocations up to 10% do not require an amendment to the Accomplishment Plan.

### Grand Totals Across All Partnerships

Item	Funding Request	Antic. Leverage	Leverage Source	Total
Personnel	\$196,600	-	-	\$196,600
Contracts	\$91,000	-	-	\$91,000
Fee Acquisition w/ PILT	\$1,208,800	-	-	\$1,208,800
Fee Acquisition w/o PILT	\$500,000	-	-	\$500,000
Easement Acquisition	\$762,500	-	-	\$762,500
Easement Stewardship	\$65,000	-	-	\$65,000
Travel	\$3,900	-	-	\$3,900
Professional Services	\$60,000	-	-	\$60,000
Direct Support Services	\$27,200	\$27,200	-, Private	\$46,800
DNR Land Acquisition Costs	\$30,000	-	-	\$30,000
Capital Equipment	-	-	-	-
Other Equipment/Tools	\$2,300	-	-	\$2,300
Supplies/Materials	\$3,700	-	-	\$3,700
DNR IDP	\$47,000	-	-	\$47,000
<b>Grand Total</b>	<b>\$2,998,000</b>	<b>\$27,200</b>	-	<b>\$3,017,600</b>



**Partner: MHB****Totals**

<b>Item</b>	<b>Funding Request</b>	<b>Antic. Leverage</b>	<b>Leverage Source</b>	<b>Total</b>
Personnel	\$20,000	-	-	\$20,000
Contracts	\$50,000	-	-	\$50,000
Fee Acquisition w/ PILT	-	-	-	-
Fee Acquisition w/o PILT	-	-	-	-
Easement Acquisition	-	-	-	-
Easement Stewardship	-	-	-	-
Travel	-	-	-	-
Professional Services	-	-	-	-
Direct Support Services	-	-	-	-
DNR Land Acquisition Costs	-	-	-	-
Capital Equipment	-	-	-	-
Other Equipment/Tools	-	-	-	-
Supplies/Materials	\$3,000	-	-	\$3,000
DNR IDP	-	-	-	-
<b>Grand Total</b>	<b>\$73,000</b>	<b>-</b>	<b>-</b>	<b>\$73,000</b>

**Personnel**

<b>Position</b>	<b>Annual FTE</b>	<b>Years Working</b>	<b>Funding Request</b>	<b>Antic. Leverage</b>	<b>Leverage Source</b>	<b>Total</b>
Administration	0.1	3.0	\$20,000	-	-	\$20,000

## Partner: BWSR

**Totals**

Item	Funding Request	Antic. Leverage	Leverage Source	Total
Personnel	\$71,900	-	-	\$71,900
Contracts	\$21,000	-	-	\$21,000
Fee Acquisition w/ PILT	-	-	-	-
Fee Acquisition w/o PILT	-	-	-	-
Easement Acquisition	\$762,500	-	-	\$762,500
Easement Stewardship	\$65,000	-	-	\$65,000
Travel	\$1,600	-	-	\$1,600
Professional Services	-	-	-	-
Direct Support Services	-	-	-	-
DNR Land Acquisition Costs	-	-	-	-
Capital Equipment	-	-	-	-
Other Equipment/Tools	\$2,300	-	-	\$2,300
Supplies/Materials	\$700	-	-	\$700
DNR IDP	-	-	-	-
<b>Grand Total</b>	<b>\$925,000</b>	<b>-</b>	<b>-</b>	<b>\$925,000</b>

**Personnel**

Position	Annual FTE	Years Working	Funding Request	Antic. Leverage	Leverage Source	Total
Program Management	0.15	3.0	\$45,000	-	-	\$45,000
Easement Processing	0.13	3.0	\$26,900	-	-	\$26,900

**Partner: TPL****Totals**

Item	Funding Request	Antic. Leverage	Leverage Source	Total
Personnel	\$104,700	-	-	\$104,700
Contracts	\$20,000	-	-	\$20,000
Fee Acquisition w/ PILT	\$1,208,800	-	-	\$1,208,800
Fee Acquisition w/o PILT	\$500,000	-	-	\$500,000
Easement Acquisition	-	-	-	-
Easement Stewardship	-	-	-	-
Travel	\$2,300	-	-	\$2,300
Professional Services	\$60,000	-	-	\$60,000
Direct Support Services	\$27,200	\$27,200	Private	\$46,800
DNR Land Acquisition Costs	\$30,000	-	-	\$30,000
Capital Equipment	-	-	-	-
Other Equipment/Tools	-	-	-	-
Supplies/Materials	-	-	-	-
DNR IDP	\$47,000	-	-	\$47,000
<b>Grand Total</b>	<b>\$2,000,000</b>	<b>\$27,200</b>	<b>-</b>	<b>\$2,019,600</b>

**Personnel**

Position	Annual FTE	Years Working	Funding Request	Antic. Leverage	Leverage Source	Total
Protection and Legal Staff	0.15	3.0	\$104,700	-	-	\$104,700

**Amount of Request:** \$2,998,000

**Amount of Leverage:** \$27,200

**Leverage as a percent of the Request:** 0.91%

**DSS + Personnel:** \$223,800

**As a % of the total request:** 7.46%

**Easement Stewardship:** \$65,000

**As a % of the Easement Acquisition:** 8.52%

**How will this program accommodate the reduced appropriation recommendation from the original proposed requested amount?**

For the most part, the number of acquisitions and easements completed will be reduced proportionately to the original proposal. Program management costs would be the exception due to program development and oversight costs remaining consistent regardless of the appropriation amount.

**Describe and explain leverage source and confirmation of funds:**

TPL has committed to contributing half of its DSS as leverage for this project.

**Contracts**

**What is included in the contracts line?**

No R/E work

## Easement Stewardship

**What is the number of easements anticipated, cost per easement for stewardship, and explain how that amount is calculated?**

## Travel

**Does the amount in the travel line include equipment/vehicle rental?**

-

**Explain the amount in the travel line outside of traditional travel costs of mileage, food, and lodging**

**I understand and agree that lodging, meals, and mileage must comply with the current MMB Commissioner Plan:**

No

## Direct Support Services

**How did you determine which portions of the Direct Support Services of your shared support services is direct to this program?**

Based on TPL's federal reimbursement rate

## Federal Funds

**Do you anticipate federal funds as a match for this program?**

No

## Output Tables

### Acres by Resource Type (Table 1)

Type	Wetland	Prairie	Forest	Habitat	Total Acres
Restore	0	0	0	0	0
Protect in Fee with State PILT Liability	0	50	280	0	330
Protect in Fee w/o State PILT Liability	0	0	135	0	135
Protect in Easement	0	0	390	0	390
Enhance	0	0	0	0	0
<b>Total</b>	<b>0</b>	<b>50</b>	<b>805</b>	<b>0</b>	<b>855</b>

### Total Requested Funding by Resource Type (Table 2)

Type	Wetland	Prairie	Forest	Habitat	Total Funding
Restore	-	-	-	-	-
Protect in Fee with State PILT Liability	-	\$200,000	\$1,268,500	-	\$1,468,500
Protect in Fee w/o State PILT Liability	-	-	\$568,000	-	\$568,000
Protect in Easement	-	-	\$961,500	-	\$961,500
Enhance	-	-	-	-	-
<b>Total</b>	<b>-</b>	<b>\$200,000</b>	<b>\$2,798,000</b>	<b>-</b>	<b>\$2,998,000</b>

### Acres within each Ecological Section (Table 3)

Type	Metro/Urban	Forest/Prairie	SE Forest	Prairie	N. Forest	Total Acres
Restore	0	0	0	0	0	0
Protect in Fee with State PILT Liability	0	50	0	0	280	330
Protect in Fee w/o State PILT Liability	0	0	0	0	135	135
Protect in Easement	0	0	0	0	390	390
Enhance	0	0	0	0	0	0
<b>Total</b>	<b>0</b>	<b>50</b>	<b>0</b>	<b>0</b>	<b>805</b>	<b>855</b>

### Total Requested Funding within each Ecological Section (Table 4)

Type	Metro/Urban	Forest/Prairie	SE Forest	Prairie	N. Forest	Total Funding
Restore	-	-	-	-	-	-
Protect in Fee with State PILT Liability	-	\$200,000	-	-	\$1,268,500	\$1,468,500
Protect in Fee w/o State PILT Liability	-	-	-	-	\$568,000	\$568,000
Protect in Easement	-	-	-	-	\$961,500	\$961,500
Enhance	-	-	-	-	-	-
<b>Total</b>	<b>-</b>	<b>\$200,000</b>	<b>-</b>	<b>-</b>	<b>\$2,798,000</b>	<b>\$2,998,000</b>

### Average Cost per Acre by Resource Type (Table 5)

Type	Wetland	Prairie	Forest	Habitat
Restore	-	-	-	-
Protect in Fee with State PILT Liability	-	\$4,000	\$4,530	-
Protect in Fee w/o State PILT Liability	-	-	\$4,207	-
Protect in Easement	-	-	\$2,465	-
Enhance	-	-	-	-

### Average Cost per Acre by Ecological Section (Table 6)

Type	Metro/Urban	Forest/Prairie	SE Forest	Prairie	N. Forest
Restore	-	-	-	-	-
Protect in Fee with State PILT Liability	-	\$4,000	-	-	\$4,530

Protect in Fee w/o State PILT Liability	-	-	-	-	\$4,207
Protect in Easement	-	-	-	-	\$2,465
Enhance	-	-	-	-	-

### Target Lake/Stream/River Feet or Miles

4 miles

### Outcomes

#### Programs in forest-prairie transition region:

- Rivers and streams provide corridors of habitat including intact areas of forest cover in the east and large wetland/upland complexes in the west ~ *An increase of lineal shoreland habitat permanently protected by easement or fee acquisition. An increase in the percent (%) of minor watersheds habitat being permanently protected.*

#### Programs in the northern forest region:

- Increased availability and improved condition of riparian forests and other habitat corridors ~ *An increase of lineal shoreland habitat permanently protected by easement or fee acquisition. An increase in the percent (%) of minor watersheds habitat being permanently protected.*

## Parcels

For restoration and enhancement programs ONLY: Managers may add, delete, and substitute projects on this parcel list based upon need, readiness, cost, opportunity, and/or urgency so long as the substitute parcel/project forwards the constitutional objectives of this program in the Project Scope table of this accomplishment plan. The final accomplishment plan report will include the final parcel list.

## Parcel Information

### Sign-up Criteria?

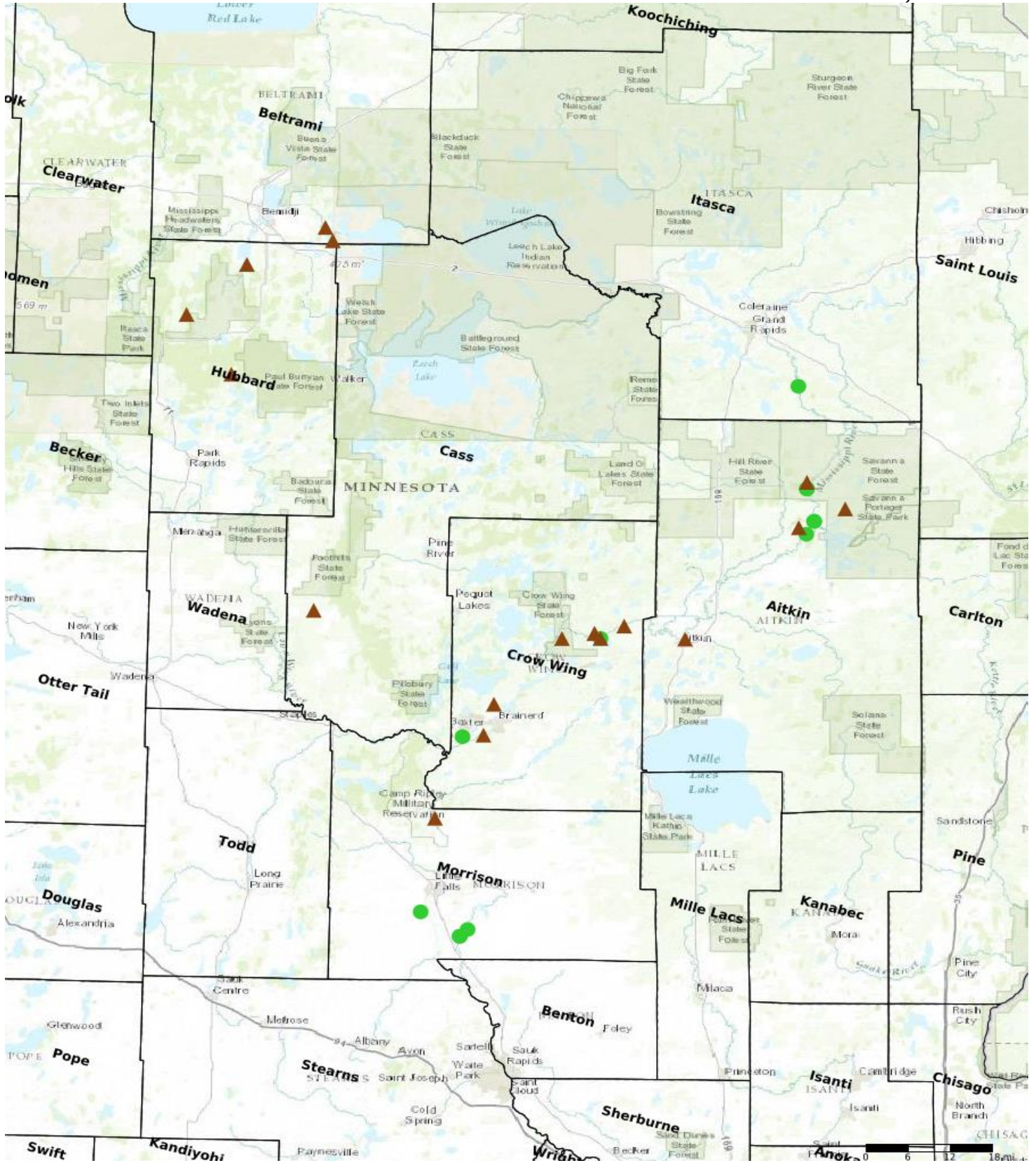
No

**Explain the process used to identify, prioritize, and select the parcels on your list:**

## Protect Parcels

Name	County	TRDS	Acres	Est Cost	Existing Protection
01-06-20-15- -	Aitkin	05024223	127	\$70,300	No
01-02-20-15- -	Aitkin	05024223	118	\$46,600	No
Palisade	Aitkin	05024228	712	\$800,000	No
Savanna Esker	Aitkin	05023209	63	\$85,374	No
Sissabagamah Creek	Aitkin	04727224	216	\$238,000	No
Savanna State Forest Addition	Aitkin	05124222	163	\$210,000	No
01-07-18-13- -	Aitkin	05024234	113	\$63,000	No
01-01-19-13- -	Aitkin	05124227	64	\$50,400	No
01-02-19-13- -	Aitkin	05124227	69	\$55,600	No
Wolf Lake II	Beltrami	14632236	460	\$2,000,000	No
Wolf Lake	Beltrami	14632223	168	\$549,000	No
Island Point	Beltrami	13632215	166	\$430,000	No
Indian Jack Lake WMA II	Crow Wing	13626234	35	\$135,000	No
18-01-19-13- -	Crow Wing	13329223	20	\$20,900	No
18-05-19-13- -	Crow Wing	04728219	64	\$70,500	No
Rabbit Lake Township	Crow Wing	04728219	73	\$300,000	No
Gilbert Lake AMA Addition	Crow Wing	13428228	64	\$775,000	No
Rabbit Lake Township II	Crow Wing	04728210	159	\$640,000	No
Indian Jack Lake	Crow Wing	13626234	263	\$600,000	No
Buffalo	Crow Wing	04431203	500	\$2,000,000	No
Crow Wing Forest North	Crow Wing	04729220	64	\$205,000	No
Schoolcraft River AMA	Hubbard	14533219	130	\$400,000	No
Laden Lake	Hubbard	14234214	2,500	\$5,000,000	No
LaSalle Creek SNA	Hubbard	14435235	350	\$800,000	No
31-01-19-13- -	Itasca	05324204	91	\$38,600	No
49-02-20-15- -	Morrison	03932214	38	\$50,100	No
Morrison Monahan	Morrison	04232210	40	\$160,000	No
49-01-19-13- -	Morrison	03932212	72	\$102,700	No
49-03-20-15- -	Morrison	12830201	76	\$106,800	No
49-04-20-15- -	Morrison	03932214	59	\$70,100	No





- Protect in Easement
- ▲ Protect in Fee with PILT
- Protect in Fee W/O PILT
- ★ Restore
- ✕ Enhance
- + Other

**Parcel Map**  
**Mississippi Headwaters Habitat Corridor Project -**  
**Phase IV**  
**(Data Generated From Parcel List)**



