



Lessard-Sams Outdoor Heritage Council

DNR Grasslands - Phase IX
Laws of Minnesota 2017 Final Report

General Information

Date: 11/04/2022

Project Title: DNR Grasslands - Phase IX

Funds Recommended: \$3,950,000

Legislative Citation: ML 2017, Ch. 91, Art. 1, Sec. 2, subd. 2(i)

Appropriation Language: \$3,950,000 in the first year is to the commissioner of natural resources to accelerate the restoration and enhancement of prairies, grasslands, and savannas on wildlife management areas, scientific and natural areas, Native Prairie Bank land, bluff prairies on State Forest land in southeastern Minnesota, and United States Fish and Wildlife Service waterfowl production area and refuge lands. A list of proposed land restorations and enhancements must be provided as part of the required accomplishment plan.

Manager Information

Manager's Name: Greg Hoch

Title: Prairie Habitat Team Supervisor

Organization: DNR

Address: 500 Lafayette Rd

City: St Paul, MN 55155

Email: greg.hoch@state.mn.us

Office Number: 651-259-5230

Mobile Number: 651-259-5230

Fax Number:

Website:

Location Information

County Location(s): Clearwater, Beltrami, Todd, Morrison, Wabasha, Benton, Olmsted, Winona, Houston, Lac qui Parle, Aitkin, Stearns, Lincoln, Kandiyohi, Meeker, Chippewa, Nobles, Wilkin, Clay, Goodhue, Cottonwood, Redwood, Big Stone, Lyon, Washington, Murray, Grant, Red Lake, Kittson, Polk, Fillmore, Mahnommen, Yellow Medicine, Roseau, Anoka, Carlton, Carver, Chisago, Dakota, Isanti, Mille Lacs, Mower, Rice, Scott, Wright, Becker, Blue Earth, Douglas, Hennepin, Jackson, Le Sueur, Marshall, McLeod, Norman, Otter Tail, Pope, Renville, Rock, Sherburne, Sibley, Stevens, Swift and Traverse.

Eco regions in which work will take place:

- Northern Forest
- Forest / Prairie Transition

- Prairie
- Metro / Urban
- Southeast Forest

Activity types:

- Restore
- Enhance

Priority resources addressed by activity:

- Prairie

Narrative

Summary of Accomplishments

We restored and enhanced a total of 40,539 grassland acres with 446 activities on Wildlife Management Areas, Scientific and Natural Areas, Native Prairie Bank easements, Waterfowl Production Areas, and National Wildlife Refuges.

Process & Methods

We select projects using a number of criteria and reviews to make sure the DNR and our federal partners, the USFWS, were spending these funds in the best and most productive ways. We can summarize our results in the following table.

Brome conversion	76
Interseeding	51
Grassland restoration	1,191
Prescribed Fire	36,079
Herbaceous Invasive Control	1,503
Goat Browsing - woody removal	281
Woody Removal	1,358
TOTAL	40,539

This appropriation involved the Southeast Roving Crews. These Crews allow the DNR to be very flexible. While they have a list of projects to work on, they can also respond fairly quickly if there's an enhancement opportunity shows up. For instance, a short dry period in a part of the state may allow them to conduct a late summer prescribed fire which was not in any of the original work plans. Roving Crews have begun experimenting with different burn seasons. The DNR will be hosting a workshop later this fall to discuss the science and management behind seasonal burns so that all staff and partners can continue to learn new applications for old tools.

This appropriation included a partnership with the USFWS. They were able to bring in 'detailers', federal crews from outside MN to dramatically enhance their capacity and ability to enhance wildlife habitat on WPAs and Refuges. The final acres reported here are reduced from our recent Status Updates. In further conversations with the USFWS, we calculated the number of detailers, number of in-state fire staff, and pro-rated the acres to account for this ratio.

We were also able to experiment with goat browsing in the SE to control buckthorn. SNA staff will monitor these sites over the coming years. This may provide a way to reduce chemical use and integrate some new and emerging agricultural practices, goats, into habitat management for the benefit of wildlife and the agricultural economy.

The DNR has traditionally focused on game species such as pheasants. However, there is more and more interest in pollinators and biodiversity. Fortunately, just about every study out there shows that management and restoration for pollinators and songbirds often creates the best habitat for game species. Diverse, healthy, productive habitat is good for a wide range of species. These projects can also increase the amount of carbon absorbed and stored by the plants and soils on these sites.

As we continue to use these funds, costs for projects will probably increase. In the early years of these funds, we completed a number of simpler or easier projects, the low-hanging fruit. Now we are left with the larger and more challenging projects.

In our budget table, we prorated our budget for individual projects by the acres accomplished. Staff funding was combined into one value. Identifying funding for each position would be an accounting challenge.

How did the program address habitats of significant value for wildlife species of greatest conservation need, threatened or endangered species, and/or list targeted species?

Prairie habitats once covered one-third of the state but presently less than 2% remain. Native prairie, other grasslands that provides habitat for wildlife, and wetlands are key components of functional prairie landscapes that have the capacity to adapt to changing environmental conditions. While these appropriation only added 2,085 acres of grassland acres to the state through restoration, these funds enhanced a much larger area. Put in another fashion, we restored and enhanced 69.5 square miles with these funds. That's an area 8.3 by 8.3 miles in area. None of this work was targeted at a specific species of wildlife. We used that approach that diverse productive habitats benefit a wide variety of both game and non-game wildlife species as well as any threatened or endangered species. In our restorations, we use very diverse seed mixes. This is obviously beneficial for pollinators. However, all those insects also create a food base for a large number of wildlife species. The structural diversity all those plant species create in the habitat allow every species to find an ideal niche in the grass as well as accomodates different life history stages of wildlife.

How did the program use science-based targeting that leveraged or expanded corridors and complexes, reduced fragmentation, or protected areas in the MN County Biological Survey.

The Minnesota Prairie Conservation Plan, the Prairie Pothole Joint Venture, and other state, regional, and national plans help us be strategic and targeted with our work. While this appropriation doesn't necessarily build on the habitat land base in those plans, it makes the existing grassland habitat as productive as possible for a wide range of wildlife species.

Explain Partners, Supporters, & Opposition

For this appropriation, we were able to partner with the USFWS, combining their existing staff with out of state detailers to increase their capacity for prescribed fire on federal public lands in western Minnesota. The increasing use of livestock, both goats and cattle, will hopefully continue to build productive relationships with the agricultural community.

Exceptional challenges, expectations, failures, opportunities, or unique aspects of program

The primary challenge was finishing this appropriation during the Covid period. However there were also a number of opportunities. We continued to build relationships with small businesses and contractors throughout the rural part of the state. We of course plan to continue this effort. This shows that these enhancement dollars are good not only for wildlife habitat but also for local rural economies.

As we work with more contractors they become more and more familiar with what our goals and objectives are and how we like to do projects. They become more efficient and need less oversight as they become used to these types of projects.

What other fund may contribute to this program?

- N/A

What is the plan to sustain and/or maintain this work after the Outdoor Heritage Funds are expended?

In many cases, these efforts 'reset the clock' for our habitat work, such as tree removal projects that get an area back to a grassland state or projects that increase plant diversity. Once we get a WMA or SNA to that state, typical management / enhancement activities such as prescribed fire should be able to maintain the area in a desired state. In other cases, we may hit a site multiple times with fire over a couple of years to again get the site to where periodic fires or other enhancements maintain the diversity and productivity of the site in the long term.

Budget

Totals

Item	Requested	AP Amount	Spent	Antic. Leverage	Received Leverage	Leverage Source	Original Total	Final Total
Personnel	\$1,300,000	\$1,353,000	\$1,290,900	-	-	-	\$1,300,000	\$1,290,900
Contracts	\$1,512,000	\$1,453,600	\$1,455,800	-	-	-	\$1,512,000	\$1,455,800
Fee Acquisition w/ PILT	-	-	-	-	-	-	-	-
Fee Acquisition w/o PILT	-	-	-	-	-	-	-	-
Easement Acquisition	-	-	-	-	-	-	-	-
Easement Stewardship	-	-	-	-	-	-	-	-
Travel	\$689,000	\$371,200	\$350,300	-	-	-	\$689,000	\$350,300
Professional Services	-	-	-	-	-	-	-	-
Direct Support Services	\$190,000	\$190,400	\$190,400	-	-	-	\$190,000	\$190,400
DNR Land Acquisition Costs	-	-	-	-	-	-	-	-
Capital Equipment	-	-	-	-	-	-	-	-
Other Equipment/Tools	-	\$10,400	\$10,400	-	-	-	-	\$10,400
Supplies/Materials	\$259,000	\$571,400	\$478,600	-	-	-	\$259,000	\$478,600
DNR IDP	-	-	-	-	-	-	-	-
Grand Total	\$3,950,000	\$3,950,000	\$3,776,400	-	-	-	\$3,950,000	\$3,776,400

Personnel

Position	Annual FTE	Years Working	Funding Request	Antic. Leverage	Leverage Source	Total
Roving Crew Leader and staff	6.0	3.0	\$1,083,400	-	-	\$1,083,400
SNA staff (combined from above)	1.5	4.0	\$207,500	-	-	\$207,500

Direct Support Services

How did you determine which portions of the Direct Support Services of your shared support services is direct to this program?

We used the standard DNR calculator to determine this number.

Explain any budget challenges or successes:

We are usually able to spend almost the entire appropriation. This year we are returning more than usual. This is simply related to the slowdown during covid.

Total Revenue: \$0

Revenue Spent: \$0

Revenue Balance: \$0

Of the money disclosed above, what are the appropriate uses of the money:

- D. This is not applicable because the recipient is a state agency or department.
- E. This is not applicable as there was no revenue generated.

Output Tables

Acres by Resource Type (Table 1)

Type	Wetland (AP)	Wetland (Final)	Prairie (AP)	Prairie (Final)	Forest (AP)	Forest (Final)	Habitat (AP)	Habitat (Final)	Total Acres (AP)	Total Acres (Final)
Restore	0	0	30	1,191	0	0	0	0	30	1,191
Protect in Fee with State PILT Liability	0	0	0	0	0	0	0	0	0	0
Protect in Fee w/o State PILT Liability	0	0	0	0	0	0	0	0	0	0
Protect in Easement	0	0	0	0	0	0	0	0	0	0
Enhance	0	0	30,140	39,348	0	0	0	0	30,140	39,348
Total	0	0	30,170	40,539	0	0	0	0	30,170	40,539

How many of these Prairie acres are Native Prairie? (Table 1b)

Type	Native Prairie (AP)	Native Prairie (Final)
Restore	0	0
Protect in Fee with State PILT Liability	0	0
Protect in Fee w/o State PILT Liability	0	0
Protect in Easement	0	0
Enhance	200	200
Total	200	200

Total Requested Funding by Resource Type (Table 2)

Type	Wetland (AP)	Wetland (Final)	Prairie (AP)	Prairie (Final)	Forest (AP)	Forest (Final)	Habitat (AP)	Habitat (Final)	Total Funding (AP)	Total Funding (Final)
Restore	-	-	\$42,000	\$111,000	-	-	-	-	\$42,000	\$111,000
Protect in Fee with State PILT Liability	-	-	-	-	-	-	-	-	-	-
Protect in Fee w/o State PILT Liability	-	-	-	-	-	-	-	-	-	-
Protect in Easement	-	-	-	-	-	-	-	-	-	-
Enhance	-	-	\$3,908,000	\$3,665,400	-	-	-	-	\$3,908,000	\$3,665,400
Total	-	-	\$3,950,000	\$3,776,400	-	-	-	-	\$3,950,000	\$3,776,400

Acres within each Ecological Section (Table 3)

Type	Metro / Urban (AP)	Metro / Urban (Final)	Forest / Prairie (AP)	Forest / Prairie (Final)	SE Forest (AP)	SE Forest (Final)	Prairie (AP)	Prairie (Final)	N. Forest (AP)	N. Forest (Final)	Total (AP)	Total (Final)
Restore	5	158	0	65	15	249	10	226	0	493	30	1,191
Protect in Fee with State PILT Liability	0	0	0	0	0	0	0	0	0	0	0	0
Protect in	0	0	0	0	0	0	0	0	0	0	0	0

Fee w/o State PILT Liability												
Protect in Easement	0	0	0	0	0	0	0	0	0	0	0	0
Enhance	4,300	9,054	2,300	5,562	4,700	2,712	18,800	21,770	40	250	30,140	39,348
Total	4,305	9,212	2,300	5,627	4,715	2,961	18,810	21,996	40	743	30,170	40,539

Total Requested Funding within each Ecological Section (Table 4)

Type	Metro/ Urban (AP)	Metro/ Urban (Final)	Forest / Prairie (AP)	Forest / Prairie (Final)	SE Forest (AP)	SE Forest (Final)	Prairie (AP)	Prairie (Final)	N. Forest (AP)	N. Forest (Final)	Total (AP)	Total (Final)
Restore	\$3,000	\$14,700	-	\$6,100	\$27,000	\$23,200	\$12,000	\$21,100	-	\$45,900	\$42,000	\$111,000
Protect in Fee with State PILT Liability	-	-	-	-	-	-	-	-	-	-	-	-
Protect in Fee w/o State PILT Liability	-	-	-	-	-	-	-	-	-	-	-	-
Protect in Easement	-	-	-	-	-	-	-	-	-	-	-	-
Enhance	\$617,000	\$843,400	\$361,000	\$518,100	\$1,026,000	\$252,600	\$1,780,000	\$2,028,000	\$124,000	\$23,300	\$3,908,000	\$3,665,400
Total	\$620,000	\$858,100	\$361,000	\$524,200	\$1,053,000	\$275,800	\$1,792,000	\$2,049,100	\$124,000	\$69,200	\$3,950,000	\$3,776,400

Target Lake/Stream/River Feet or Miles

Outcomes

Programs in forest-prairie transition region:

- Protected, restored, and enhanced nesting and migratory habitat for waterfowl, upland birds, and species of greatest conservation need ~ *Although we will not be conducting any specific monitoring on these sites, they will be included in the long-term surveys we do such as the August Roadside Survey, Prairie Chicken Survey, waterfowl surveys, etc. They may also be included in federal or regional surveys such as the Breeding Bird Survey, Waterfowl Breeding Population Survey, and others.*

Programs in metropolitan urbanizing region:

- Core areas protected with highly biologically diverse wetlands and plant communities, including native prairie, Big Woods, and oak savanna ~ *Although we will not be conducting any specific monitoring on these sites, they will be included in the long-term surveys we do such as the August Roadside Survey, Prairie Chicken Survey, waterfowl surveys, etc. They may also be included in federal or regional surveys such as the Breeding Bird Survey, Waterfowl Breeding Population Survey, and others.*

Programs in the northern forest region:

- Healthy populations of endangered, threatened, and special concern species as well as more common species ~ *Although we will not be conducting any specific monitoring on these sites, they will be included in the long-term surveys we do such as the August Roadside Survey, Prairie Chicken Survey, waterfowl surveys, etc. They may also be included in federal or regional surveys such as the Breeding Bird Survey, Waterfowl Breeding Population Survey, and others.*

Programs in prairie region:

- Improved condition of habitat on public lands ~ *Although we will not be conducting any specific monitoring on these sites, they will be included in the long-term surveys we do such as the August Roadside Survey, Prairie Chicken Survey, waterfowl surveys, etc. They may also be included in federal or regional surveys such as the Breeding Bird Survey, Waterfowl Breeding Population Survey, and others.*

Programs in southeast forest region:

- Healthier populations of endangered, threatened, and special concern species as well as more common species ~ *Although we will not be conducting any specific monitoring on these sites, they will be included in the long-term surveys we do such as the August Roadside Survey, Prairie Chicken Survey, waterfowl surveys, etc. They may also be included in federal or regional surveys such as the Breeding Bird Survey, Waterfowl Breeding Population Survey, and others.*

Parcels

Sign-up Criteria?

No

Restore / Enhance Parcels

Name	County	TRDS	Acres	Est Cost	Existing Protection
Gun Lake WMA	Aitkin	04825204	258	\$24,033	Yes
Gun Lake WMA	Aitkin	04825204	84	\$7,824	Yes
Gordie Mikkelson WMA	Anoka	03322206	34	\$3,167	Yes
Bethel WMA	Anoka	03424226	59	\$5,496	Yes
Carlos Avery WMA	Anoka	03322233	18	\$1,676	Yes
Lamprey Pass WMA	Anoka	03222213	18	\$1,676	Yes
Lamprey Pass WMA	Anoka	03222213	6	\$558	Yes
Gordie Mikkelson WMA	Anoka	03322206	23	\$2,142	Yes
Lamprey Pass WMA	Anoka	03222213	3	\$279	Yes
Carlos Avery WMA	Anoka	03322233	9	\$839	Yes
Lamprey Pass WMA	Anoka	03222213	1	\$93	Yes
Bethel WMA	Anoka	03424226	4	\$372	Yes
Carlos Avery WMA	Anoka	03322233	16	\$1,490	Yes
Carlos Avery WMA	Anoka	03322233	1	\$93	Yes
Lamprey Pass WMA	Anoka	03222213	30	\$2,796	Yes
Buchl South WPA	Becker	14142215	27	\$2,515	Yes
Hamden Slough NWR	Becker	14042210	2	\$186	Yes
Haverkamp WPA	Becker	14141206	67	\$6,241	Yes
Helliksen Prairie WPA	Becker	14242230	636	\$59,245	Yes
Hellikson Prairie WPA	Becker	14242230	406	\$37,820	Yes
Kent WPA	Becker	14241209	140	\$13,041	Yes
Kruger West WPA	Becker	14141215	195	\$18,164	Yes
Lethenstrum WPA	Becker	13942211	56	\$5,216	Yes
Lindsey Lake WPA	Becker	14242233	99	\$9,222	Yes
Matter East WPA	Becker	14142223	53	\$4,937	Yes
Seter Davis WPA	Becker	14043226	224	\$20,866	Yes
Shay WPA	Becker	14243223	112	\$10,433	Yes
Spring Marsh WPA	Becker	14042209	389	\$36,236	Yes
Stumbo WPA	Becker	14242206	77	\$7,172	Yes
Wenner WPA	Becker	14042203	196	\$18,258	Yes
Hamden Slough NWR	Becker	14042216	4	\$372	Yes
Hamden Slough NWR	Becker	14042210	4	\$372	Yes
Hamden Slough NWR	Becker	14042215	2	\$186	Yes
Buchl WPA	Becker	14142203	84	\$7,824	Yes
Baker WPA	Becker	14042235	7	\$652	Yes
Hamden Slough NWR - Hesby	Becker	13942211	298	\$27,759	Yes
Ackerson South WPA	Becker	14042214	56	\$5,216	Yes
Buchl WPA	Becker	14141209	288	\$26,828	Yes
Bemidji Slough WMA	Beltrami	14633228	7	\$652	Yes
Woodrow Pediocetes WMA	Beltrami	15231227	3	\$279	Yes
Glendorado WMA	Benton	03628225	17	\$1,583	Yes
Glendorado WMA	Benton	03628225	17	\$1,583	Yes
BenLacs WMA	Benton	03628213	1	\$96	Yes
Michaelson Farm WMA	Benton	03731205	33	\$3,074	Yes
Graham WMA: Main Unit	Benton	03830201	30	\$2,794	Yes
Graham WMA: Main Unit	Benton	03830201	41	\$3,819	Yes
Michaelson Farm WMA	Benton	03731205	24	\$2,235	Yes
Glendorado WMA	Benton	03628225	7	\$652	Yes
Sartell WMA	Benton	03831215	13	\$1,210	Yes

Michaelson Farm WMA	Benton	03731205	31	\$2,887	Yes
Hillman WPA	Big Stone	12145209	37	\$3,446	Yes
Roderick WPA	Big Stone	12137203	22	\$2,049	Yes
Svor West WPA	Big Stone	12238217	473	\$44,061	Yes
Wagner WPA	Big Stone	12345218	79	\$7,359	Yes
Akron WPA	Big Stone	12144212	42	\$3,912	Yes
Anderson WPA	Big Stone	12448210	141	\$13,134	Yes
Dismal Swamp WPA	Big Stone	12345214	372	\$34,653	Yes
Dybdahl WPA	Big Stone	12345225	90	\$8,383	Yes
EP Islands WPA	Big Stone	12045233	67	\$6,241	Yes
Kufrin SW WPA	Big Stone	12245221	41	\$3,819	Yes
Kufrin WPA	Big Stone	12245222	126	\$11,737	Yes
Kufrin WPA	Big Stone	12245221	102	\$9,501	Yes
Nelson WPA	Big Stone	12044202	31	\$2,887	Yes
Odessa Low-Flow WPA	Big Stone	12045202	121	\$11,271	Yes
Big Stone NWR	Big Stone	12146227	56	\$5,216	Yes
Clinton Prairie SNA	Big Stone	12347216	1	\$93	Yes
Howard Farm WPA	Blue Earth	10728219	137	\$12,762	Yes
Roberts WPA	Blue Earth	10627215	85	\$7,918	Yes
Cobb River WPA	Blue Earth	10626215	200	\$18,630	Yes
Watonwan WPA	Blue Earth	10629228	95	\$8,849	Yes
MN Pheasants WPA	Blue Earth	10624226	22	\$2,049	Yes
Willow Creek WPA	Blue Earth	10529209	56	\$5,216	Yes
Firebird WMA	Carlton	04721225	143	\$13,320	Yes
Rapids Lake WPA	Carver	11523230	4	\$372	Yes
Rapids WPA	Carver	11523219	288	\$26,828	Yes
Carver Highlands WMA	Carver	11524225	13	\$1,210	Yes
Schneewind WMA	Carver	11625234	10	\$931	Yes
Gravel Pit 1748 WMA	Carver	11626217	2	\$186	Yes
Gravel Pit 2749 WMA	Carver	11626217	1	\$93	Yes
Gravel Pit 1748 WMA	Carver	11626220	1	\$93	Yes
Gravel Pit 2749 WMA	Carver	11626217	1	\$93	Yes
Perbix WPA	Carver	11526234	98	\$9,129	Yes
Carver Highlands WMA	Carver	11524236	53	\$4,937	Yes
Sena WMA	Chippewa	11937226	7	\$652	Yes
Carlos Avery WMA: Sunrise Unit	Chisago	03421227	30	\$2,794	Yes
Carlos Avery WMA: Sunrise Unit	Chisago	03421227	6	\$558	Yes
Carlos Avery WMA: Sunrise Unit	Chisago	03421227	12	\$1,117	Yes
Carlos Avery WMA: Sunrise Unit	Chisago	03421227	2	\$186	Yes
Blanket Flower Prairie SNA	Clay	13744211	48	\$4,471	Yes
Flickertail WPA	Clay	14245235	225	\$20,959	Yes
Olson WPA	Clay	13944211	36	\$3,353	Yes
Melby WPA	Clay	14145226	47	\$4,378	Yes
McDonald WPA	Clay	13845227	32	\$2,980	Yes
Kenyon WPA	Clay	13845212	304	\$28,318	Yes
Hoykins South WPA	Clay	14044220	200	\$18,630	Yes
Felton Prairie SNA	Clay	14145205	48	\$4,471	Yes
Blanket Flower Prairie SNA	Clay	13744211	182	\$16,953	Yes
Hoykins North WPA	Clay	14044217	140	\$13,041	Yes
Fuglie WPA	Clay	14244230	75	\$6,986	Yes
Doran Lake South WPA	Clay	13945236	96	\$8,942	Yes
Doran Lake North WPA	Clay	13945225	127	\$11,830	Yes
Carter WMA	Clearwater	14838219	3	\$279	Yes
Mosquito Creek WMA	Clearwater	14637230	7	\$652	Yes
Mosquito Creek WMA	Clearwater	14637231	48	\$4,471	Yes
Long Lake E WPA	Cottonwood	10638223	102	\$9,501	Yes
Rock Ridge SNA	Cottonwood	10735205	46	\$4,285	Yes
Carson 5-1 NPB	Cottonwood	10635205	1	\$93	Yes

Cottonwood Lake N WPA	Cottonwood	10535219	105	\$9,781	Yes
Cottonwood Lake S WPA	Cottonwood	10535219	89	\$8,290	Yes
Harder Lake WPA	Cottonwood	10636216	108	\$10,060	Yes
Vermillion Highlands Research Recreation and WMA	Dakota	11419211	13	\$1,210	Yes
Chub Lake WMA	Dakota	11320233	37	\$3,446	Yes
Vermillion River WMA	Dakota	11419223	254	\$23,660	Yes
Vermillion Highlands Research Recreation and WMA	Dakota	11419223	268	\$24,965	Yes
Mud Creek WMA	Dakota	11220229	63	\$5,868	Yes
Mud Creek WMA	Dakota	11220229	28	\$2,608	Yes
Mud Creek WMA	Dakota	11220229	40	\$3,726	Yes
Vermillion Highlands Research Recreation and WMA	Dakota	11419211	1	\$93	Yes
Vermillion Highlands Research Recreation and WMA	Dakota	11419223	473	\$44,061	Yes
Vermillion River WMA	Dakota	11419223	279	\$25,989	Yes
Jl Case WPA	Douglas	12840232	96	\$8,942	Yes
Bengston WPA	Douglas	12740223	230	\$21,425	Yes
Odens WPA	Douglas	13040232	154	\$14,345	Yes
Kensington WPA	Douglas	12740233	64	\$5,961	Yes
Tenhoff WPA	Douglas	12736202	74	\$6,893	Yes
Rushford Sand Barrens SNA	Fillmore	10408225	50	\$4,657	Yes
Pin Oak Prairie SNA	Fillmore	10412224	17	\$1,583	Yes
Rushford Sand Barrens SNA	Fillmore	10408225	50	\$4,657	Yes
RJD State Forest-Rushford Unit	Fillmore	10408214	99	\$9,222	Yes
John Peter Hoffman Spring Brook Valley WMA	Goodhue	11215207	1	\$93	Yes
John Peter Hoffman Spring Brook Valley WMA	Goodhue	11215207	8	\$745	Yes
Cannon River Turtle Preserve SNA	Goodhue	11316224	1	\$93	Yes
John Peter Hoffman Spring Brook Valley WMA	Goodhue	11215207	1	\$93	Yes
Warsaw WMA	Goodhue	11118208	1	\$93	Yes
River Terrace Prairie SNA	Goodhue	11217201	1	\$93	Yes
River Terrace Prairie SNA	Goodhue	11217201	29	\$2,701	Yes
Spring Creek Prairie SNA	Goodhue	11315234	7	\$652	Yes
Bah Lakes WPA	Grant	13041236	205	\$19,096	Yes
Olson NPB	Grant	12841206	15	\$1,397	Yes
Jensen WMA	Grant	12941229	13	\$1,210	Yes
Bah Lakes WPA	Grant	12941201	98	\$9,129	Yes
Bailey Slough WPA	Grant	12843206	288	\$26,828	Yes
Green WPA	Grant	12843208	67	\$6,241	Yes
Stony Brook WPA	Grant	13043205	145	\$13,507	Yes
Upgrala WPA	Hennepin	11622228	70	\$6,520	Yes
RJD State Forest-Reno Unit	Houston	10204226	50	\$4,657	Yes
RJD State Forest-Jefferson Unit	Houston	10104229	57	\$5,309	Yes
Chishom Valley WMA	Houston	10307204	38	\$3,539	Yes
Mound Prairie SNA	Houston	10305203	52	\$4,843	Yes
RJD State Forest-Jefferson Unit	Houston	10104224	58	\$5,402	Yes
Brownsville 26-1 NPB	Houston	10304226	14	\$1,304	Yes
Crooked Road WMA	Isanti	03525228	1	\$93	Yes
Becklin Homestead WMA	Isanti	03624224	1	\$93	Yes
Cranberry WMA	Isanti	03724205	1	\$93	Yes
Crooked Road WMA	Isanti	03525228	4	\$372	Yes
Dalbo WMA	Isanti	03725204	5	\$465	Yes
Becklin Homestead WMA	Isanti	03624224	1	\$93	Yes
Dalbo WMA	Isanti	03725204	1	\$93	Yes
USFWS Easement #3	Jackson	10137232	8	\$745	Yes
Bisaillion WPA	Jackson	10136208	50	\$4,657	Yes
Boot Lake S WPA	Jackson	10335231	183	\$17,047	Yes

Weber WPA	Kandiyohi	12035228	28	\$2,608	Yes
Atwater WMA	Kandiyohi	11933207	4	\$372	Yes
Gennessee WMA	Kandiyohi	11933235	2	\$186	Yes
Lake Eleanor WMA	Kandiyohi	11934231	4	\$372	Yes
Ella Lake WPA	Kandiyohi	11933221	80	\$7,452	Yes
Evenson WPA	Kandiyohi	12035216	47	\$4,378	Yes
Florida Slough WPA	Kandiyohi	12135228	72	\$6,707	Yes
Freese WPA	Kandiyohi	12236211	164	\$15,277	Yes
Freese WPA	Kandiyohi	12236212	19	\$1,769	Yes
Henjum Lake WPA	Kandiyohi	12136222	15	\$1,397	Yes
Henjum Lake WPA	Kandiyohi	12136222	88	\$8,197	Yes
Lindgren Lake WPA	Kandiyohi	12036226	24	\$2,235	Yes
Olson Lake WPA	Kandiyohi	11836225	76	\$7,079	Yes
Randall WPA	Kandiyohi	12236209	199	\$18,537	Yes
Reynolds WPA	Kandiyohi	11836222	103	\$9,594	Yes
Swan Lake WPA	Kandiyohi	12036202	14	\$1,304	Yes
Uncle Matt's WPA	Kandiyohi	12033232	129	\$12,016	Yes
Weber WPA	Kandiyohi	12035228	27	\$2,515	Yes
Weber WPA	Kandiyohi	12035221	26	\$2,421	Yes
Stearns Prairie Heritage WMA	Kandiyohi	12234202	170	\$15,836	Yes
Bomsta WPA	Kandiyohi	11833232	198	\$18,444	Yes
Brenner Lake WPA	Kandiyohi	12236207	83	\$7,731	Yes
Norway 1-1 NPB	Kittson	16046201	45	\$4,191	Yes
West Prairie WPA	Lac qui Parle	12046223	84	\$7,824	Yes
Yellowbank South WPA	Lac qui Parle	12045207	292	\$27,200	Yes
Madison WMA	Lac qui Parle	11844207	15	\$1,397	Yes
Lac quiParle WMA	Lac qui Parle	12044207	46	\$4,285	Yes
Lac qui Parle WMA	Lac qui Parle	11943224	64	\$5,961	Yes
Sioux Indian WMA	Lac qui Parle	11742230	64	\$5,961	Yes
Garfield WPA	Lac qui Parle	11745204	119	\$11,085	Yes
Geise WPA	Lac qui Parle	12643222	200	\$18,630	Yes
Greiner WPA	Lac qui Parle	12340201	63	\$5,868	Yes
Mueller WPA	Lac qui Parle	12046212	32	\$2,980	Yes
Ruby Red WPA	Lac qui Parle	12045233	114	\$10,619	Yes
South Prairie 1 WPA	Lac qui Parle	12046203	374	\$34,839	Yes
Lillejord WMA	Lac qui Parle	11844205	33	\$3,074	Yes
Tucholke WPA	Lac qui Parle	12145234	88	\$8,197	Yes
Fickling WPA	Le Sueur	11124218	63	\$5,868	Yes
Preuss WPA	Le Sueur	10923218	35	\$3,260	Yes
Schindel WMA	Lincoln	10946204	25	\$2,328	Yes
Weber West WPA	Lincoln	11045222	66	\$6,148	Yes
Tyler WMA	Lincoln	10944204	14	\$1,304	Yes
Custer 15-1 NPB	Lyon	10941215	4	\$372	Yes
Santee Prairie SNA	Mahnomen	14541206	1	\$93	Yes
Beaulieu WPA	Mahnomen	14641203	218	\$20,307	Yes
Nelson Prairie WPA	Mahnomen	14642211	893	\$83,186	Yes
Agassiz NWR Ditch 2 Uplands	Marshall	15741230	672	\$62,599	Yes
Agassiz NWR Kelly Pool	Marshall	15741225	668	\$62,226	Yes
Agassiz NWR Moose Pasture	Marshall	15641220	1,178	\$109,734	Yes
Agassiz NWR Unit 23 Madsen South	Marshall	15642227	886	\$82,533	Yes
Phasianus WPA	McLeod	11629235	54	\$5,030	Yes
Tyrone Flats WPA	Meeker	12131223	36	\$3,353	Yes
Tyrone Flats WPA	Meeker	12131223	31	\$2,887	Yes
Forest City WPA	Meeker	12030220	84	\$7,824	Yes
Kingston WMA	Meeker	12129220	4	\$372	Yes
Madsen WMA	Meeker	12030223	4	\$372	Yes
Forest City WPA	Meeker	12030220	28	\$2,608	Yes
Casey Lake WPA	Meeker	11930229	164	\$15,277	Yes

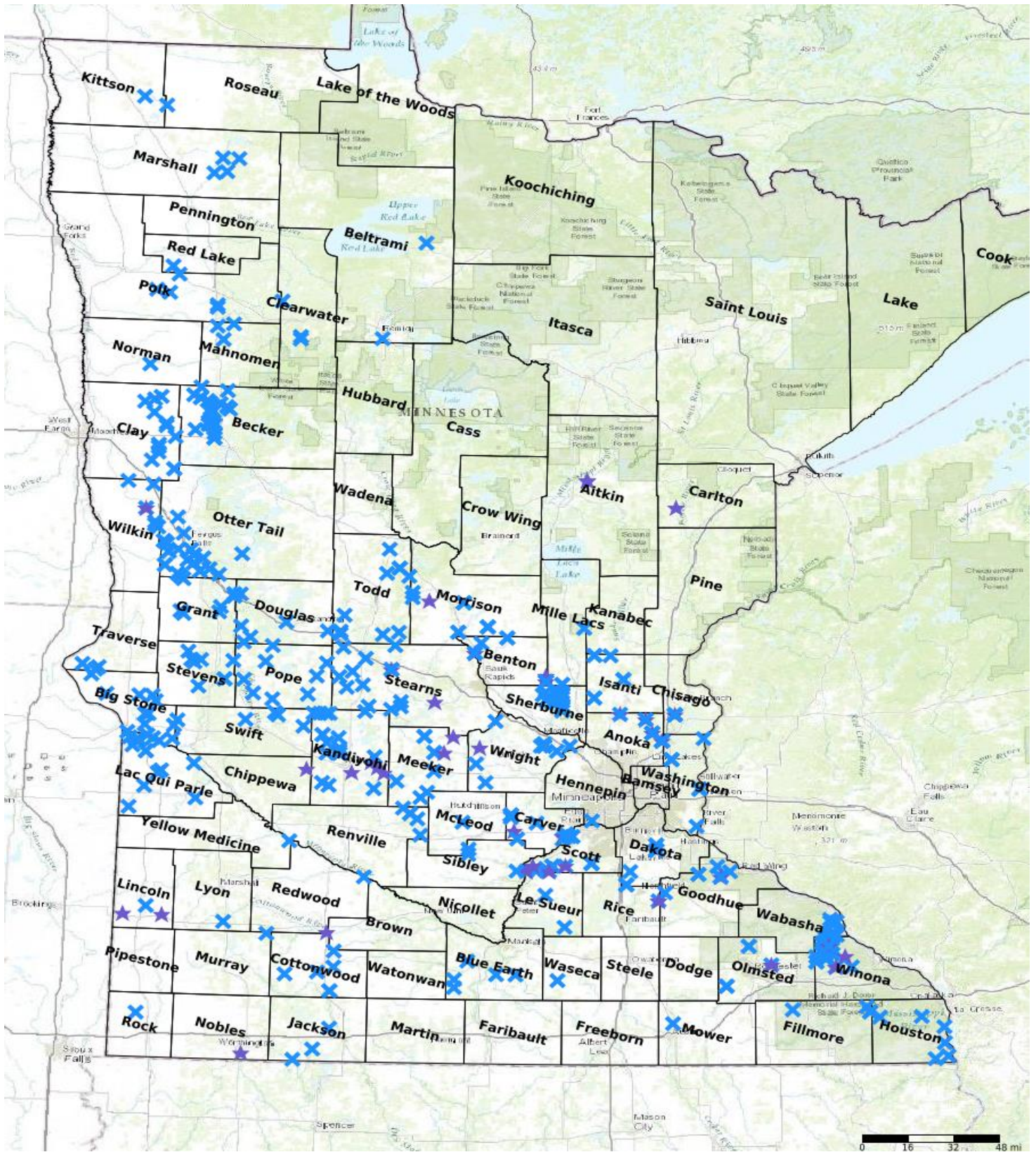
Cedar Mills WPA	Meeker	11731215	81	\$7,545	Yes
Lake Harden WPA	Meeker	11731201	94	\$8,756	Yes
Rosendale WPA	Meeker	11832216	103	\$9,594	Yes
Groundhouse WMA	Mille Lacs	03926213	27	\$2,515	Yes
Kunkel WMA	Mille Lacs	03627235	133	\$12,389	Yes
Kunkel WMA	Mille Lacs	03627235	13	\$1,210	Yes
Little Elk WMA	Morrison	13031231	45	\$4,191	Yes
Ereaux WMA	Morrison	04131230	8	\$745	Yes
McDougall WMA	Morrison	03932228	2	\$183	Yes
Rice Area Sportsmens Club WMA	Morrison	03931213	3	\$279	Yes
Ereaux WMA	Morrison	04131230	10	\$931	Yes
Rice Area Sportsmens Club WMA	Morrison	03931213	5	\$465	Yes
Little Elk WMA	Morrison	13031219	2	\$186	Yes
Rice Area Sportsmens Club WMA	Morrison	03931213	73	\$6,800	Yes
Mud Lake WMA	Morrison	12931201	23	\$2,142	Yes
Ereaux WMA	Morrison	04131230	36	\$3,353	Yes
McDougall WMA	Morrison	03932228	75	\$6,986	Yes
Glendorado WMA	Morrison	03628225	10	\$931	Yes
Ramsey Mill Pond WMA	Mower	10318214	8	\$745	Yes
Holly 2-1 NPB	Murray	10839202	1	\$93	Yes
Peterson WMA	Nobles	10140222	24	\$2,235	Yes
Pavia WPA	Norman	14445228	103	\$9,594	Yes
Haverhill WMA	Olmsted	10713226	8	\$745	Yes
Rock Dell WMA	Olmsted	10515204	33	\$3,074	Yes
Rock Dell WMA	Olmsted	10515204	5	\$465	Yes
Oronoco Prairie SNA	Olmsted	10814222	16	\$1,490	Yes
Oronoco Prairie SNA	Olmsted	10814222	6	\$558	Yes
Rock Dell WMA	Olmsted	10515204	26	\$2,421	Yes
Haverhill WMA	Olmsted	10713226	18	\$1,676	Yes
Whitewater WMA - Llyodes	Olmsted	10710207	34	\$3,167	Yes
Hensch WPA	Otter Tail	13144208	28	\$2,608	Yes
Wieggers West WPA	Otter Tail	13343208	41	\$3,819	Yes
Townsend WPA	Otter Tail	13243210	56	\$5,216	Yes
Ten Mile WPA	Otter Tail	13142215	63	\$5,868	Yes
Rush Lake WPA	Otter Tail	13244212	74	\$6,893	Yes
Roehls Prairie WPA	Otter Tail	13344229	22	\$2,049	Yes
Ridgeway WPA	Otter Tail	13244216	88	\$8,197	Yes
Ridgeway WPA	Otter Tail	13244216	88	\$8,197	Yes
Peter Lien WPA	Otter Tail	13142219	63	\$5,868	Yes
Neumann WPA	Otter Tail	13243233	147	\$13,693	Yes
Morrison WPA	Otter Tail	13141230	82	\$7,638	Yes
Knollwood WPA	Otter Tail	13243223	2	\$186	Yes
Knollwood WPA	Otter Tail	13243223	80	\$7,452	Yes
Hoff-Fronning WPA	Otter Tail	13143202	36	\$3,353	Yes
Hintermeister WPA	Otter Tail	13242229	46	\$4,285	Yes
Hensch WPA	Otter Tail	13144208	102	\$9,501	Yes
Grewe WPA	Otter Tail	13240217	95	\$8,849	Yes
Fabian WPA	Otter Tail	13143231	40	\$3,726	Yes
Dahler Slough WPA	Otter Tail	13144225	106	\$9,874	Yes
Agassiz WPA	Otter Tail	13344229	200	\$18,630	Yes
Agassiz WPA	Otter Tail	13344233	195	\$18,164	Yes
Aaberg WPA	Otter Tail	13444212	98	\$9,129	Yes
Winger WPA	Polk	14742202	112	\$10,433	Yes
Pembina Trail SNA	Polk	14845203	1	\$93	Yes
Crane WPA	Polk	14944201	920	\$85,701	Yes
Luxemburg WPA	Polk	14844208	112	\$10,433	Yes
Winger WPA	Polk	14842235	336	\$31,299	Yes
Mosquito Ranch WPA	Pope	12548220	431	\$40,149	Yes

Krantz Lake WPA	Pope	12536202	757	\$70,517	Yes
State Lake WPA	Pope	12536232	11	\$1,024	Yes
Lynch Lake WPA	Pope	12240227	278	\$25,896	Yes
Benson Lake WPA	Pope	12339213	22	\$2,049	Yes
Barsness WPA	Pope	12440209	54	\$5,030	Yes
Jackson WPA	Pope	12539203	41	\$3,819	Yes
Jorgenson East WPA	Pope	12639201	27	\$2,515	Yes
Nelson Lake WPA	Pope	12337202	164	\$15,277	Yes
Lake Pleasant 22-1 NPB	Red Lake	15044222	47	\$4,378	Yes
Cedar Mountain SNA	Redwood	11234214	1	\$93	Yes
Boon Lake WPA	Renville	11631218	81	\$7,545	Yes
Brookfield WPA	Renville	11632202	51	\$4,750	Yes
Phare Lake WPA	Renville	11631228	87	\$8,104	Yes
Preston Lake WPA	Renville	11531227	134	\$12,482	Yes
Boon Lake WPA	Renville	11631218	109	\$10,153	Yes
Prairie Creek WMA	Rice	11119225	41	\$3,819	Yes
Prairie Creek WMA	Rice	11119225	30	\$2,794	Yes
Prairie Creek WMA	Rice	11119225	3	\$279	Yes
Loosbrock WPA	Rock	10345207	78	\$7,265	Yes
Two Rivers Aspen Prairie Parkland SNA	Roseau	16044219	4	\$372	Yes
Raven WMA	Scott	11324232	4	\$372	Yes
Marsh WMA	Scott	11323219	4	\$375	Yes
Clark Lake WMA	Scott	11325221	2	\$186	Yes
Pheasants Forever #3 WMA	Scott	11324221	2	\$186	Yes
Ney WMA	Scott	11325231	49	\$4,564	Yes
Marsh WMA	Scott	11323219	33	\$3,074	Yes
Bradshaw Lake WMA	Scott	11322216	1	\$93	Yes
Raven WMA	Scott	11324232	26	\$2,421	Yes
PF - Module #1 WMA	Scott	11325234	5	\$465	Yes
Mahoney's Marsh WMA	Scott	11324230	45	\$4,191	Yes
Bradshaw Lake WMA	Scott	11322216	35	\$3,260	Yes
Raven WMA	Scott	11324232	25	\$2,328	Yes
Pheasants Forever #3 WMA	Scott	11324221	13	\$1,301	Yes
Mahoney's Marsh WMA	Scott	11324230	44	\$4,098	Yes
Bradshaw Lake WMA	Scott	11322216	64	\$5,961	Yes
Louisville Swamp WPA	Scott	11523228	14	\$1,304	Yes
Louisville Swamp WPA	Scott	11523228	7	\$652	Yes
Louisville Swamp WPA	Scott	11523229	119	\$11,085	Yes
Ney WMA	Scott	11325231	11	\$1,024	Yes
Sherburne NWR Unit 37	Sherburne	03527214	385	\$35,864	Yes
Sherburne NWR Unit 37,38	Sherburne	03427211	546	\$50,861	Yes
Sherburne NWR Unit 7, 9, 11	Sherburne	03527230	1,525	\$142,059	Yes
Sherburne NWR	Sherburne	03427214	65	\$6,054	Yes
Sherburne NWR	Sherburne	03427223	83	\$7,731	Yes
Sherburne NWR	Sherburne	03427205	1	\$130	Yes
Sherburne NWR - Butterfly Field	Sherburne	03527227	68	\$6,334	Yes
Sherburne NWR - Unit 2 West Berg	Sherburne	03527223	518	\$48,253	Yes
Sherburne NWR - Unit 20	Sherburne	03527221	814	\$75,836	Yes
Sherburne NWR - Unit 23 Madsen North	Sherburne	03527215	455	\$42,384	Yes
Sherburne NWR - Unit 42 CHZ	Sherburne	03527226	14	\$1,304	Yes
Sherburne NWR - Unit 6	Sherburne	03528223	622	\$57,969	Yes
Eagle Island WPA	Sherburne	03528213	4	\$372	Yes
Sherburne NWR Unit 28	Sherburne	03527227	80	\$7,452	Yes
Sherburne NWR Unit 33	Sherburne	03427204	144	\$13,414	Yes
Sherburne NWR West Durgin	Sherburne	03528236	176	\$16,395	Yes
High Island WPA	Sibley	11428219	56	\$5,216	Yes
Hahn Lake WPA	Sibley	11428231	112	\$10,433	Yes
Dehning WPA	Sibley	11326234	108	\$10,060	Yes

Sauk River WMA	Stearns	12634226	39	\$3,632	Yes
North Fork WMA	Stearns	12435223	9	\$838	Yes
Zion WPA	Stearns	12332215	110	\$10,246	Yes
Discovery WMA	Stearns	12330217	9	\$838	Yes
Christopher Kurilla WMA	Stearns	12532218	13	\$1,210	Yes
Christopher Kurilla WMA	Stearns	12532218	26	\$2,421	Yes
Mel Roehrl WMA	Stearns	12535233	64	\$5,961	Yes
Miller Spring Lea Farm WMA	Stearns	12332227	35	\$3,260	Yes
Victor Winter WMA	Stearns	12635203	39	\$3,632	Yes
Vision WMA	Stearns	12434215	31	\$2,887	Yes
Zion WMA	Stearns	12332231	35	\$3,260	Yes
Tribute WMA	Stearns	12334225	107	\$9,967	Yes
Christopher Kurilla WMA	Stearns	12532218	20	\$1,862	Yes
Padua WMA	Stearns	12534219	15	\$1,397	Yes
Pieske WPA	Stevens	12541201	110	\$10,246	Yes
Smith WPA	Stevens	12543202	127	\$11,830	Yes
Artichoke Lake NW WPA	Stevens	12243231	162	\$15,090	Yes
Bahr WPA	Stevens	12543212	41	\$3,819	Yes
Edwards WPA	Stevens	12441209	32	\$2,980	Yes
Edwards WPA	Stevens	12441209	180	\$16,767	Yes
Fults WPA	Stevens	12542205	131	\$12,203	Yes
Mero WPA	Stevens	12442230	85	\$7,918	Yes
Pearson WPA	Stevens	11646215	183	\$17,047	Yes
Loen WPA	Swift	12238207	85	\$7,918	Yes
Grey Eagle WMA	Todd	12733210	2	\$186	Yes
Ostendorf WMA	Todd	12732204	13	\$1,210	Yes
Long Prairie River WMA	Todd	13133214	32	\$2,980	Yes
Ostendorf WMA	Todd	12732232	4	\$372	Yes
Platt Lake WMA	Todd	12835203	65	\$6,054	Yes
Ruff-Nik WMA	Todd	13132224	29	\$2,701	Yes
Kobliska WMA: Main Unit	Todd	13132204	5	\$465	Yes
Spohn WMA	Todd	12735204	70	\$6,520	Yes
Kobliska WMA: Main Unit	Todd	13132204	53	\$4,937	Yes
Quistorff WMA	Todd	12735209	239	\$22,263	Yes
Staples WMA	Todd	13333236	60	\$5,589	Yes
Murphy WPA	Traverse	12548236	55	\$5,123	Yes
Lawrence WPA	Traverse	12547230	158	\$14,718	Yes
Robin Hood WPA	Traverse	12838222	154	\$14,345	Yes
Kellogg Weaver Dunes SNA	Wabasha	10909206	1	\$93	Yes
Whitewater WMA	Wabasha	10910236	5	\$465	Yes
Whitewater WMA - Trout Valley	Wabasha	10909231	2	\$186	Yes
Whitewater WMA - Dorer Pool 1	Wabasha	10910236	100	\$9,315	Yes
Whitewater WMA - Door Pool 3	Wabasha	10810210	115	\$10,712	Yes
Whitewater WMA	Wabasha	10910236	12	\$1,117	Yes
Whitewater WMA - Hwy 74 Horeshoe Prairie	Wabasha	10910235	24	\$2,235	Yes
McCarthy Lake WMA	Wabasha	11010235	4	\$372	Yes
Whitewater WMA - Horseshoe Prairie	Wabasha	10910235	4	\$372	Yes
Whitewater WMA	Wabasha	10910235	4	\$372	Yes
McCarthy Lake WMA	Wabasha	10910202	7	\$652	Yes
Whitewater WMA	Wabasha	10910236	1	\$93	Yes
Whitewater WMA	Wabasha	10910201	3	\$279	Yes
Whitewater WMA	Wabasha	10910236	14	\$1,304	Yes
Reillys Bench WMA	Wabasha	10936236	14	\$1,304	Yes
Paul Hugo Farms WMA	Washington	03121221	1	\$93	Yes
Bayport WMA	Washington	02920215	29	\$2,701	Yes
Bayport WMA	Washington	02920215	2	\$186	Yes
Paul Hugo Farms WMA	Washington	03121221	1	\$93	Yes
St. Croix Savanna SNA	Washington	02920215	2	\$186	Yes

Lost Valley Prairie SNA	Washington	02720228	17	\$1,583	Yes
Falls Creek SNA	Washington	03219207	1	\$93	Yes
Paul Hugo Farms WMA	Washington	03121221	1	\$93	Yes
Bayport WMA	Washington	02920215	40	\$3,726	Yes
Tanberg 29-2 NPB	Wilkin	13545229	16	\$1,490	Yes
Brown WPA	Wilkin	13445226	114	\$10,619	Yes
Hannemann WPA	Wilkin	13445236	122	\$11,364	Yes
Bellmore WPA	Wilkin	13645210	88	\$8,197	Yes
Tanberg 29-1 NPB	Wilkin	13545229	43	\$4,005	Yes
Brown North WPA	Wilkin	13445223	141	\$13,134	Yes
Atherton 5-1 NPB	Wilkin	13646205	50	\$4,657	Yes
Whitewater WMA - Hwy 74	Winona	10710210	25	\$2,328	Yes
Tiger Marsh WMA	Winona	11526216	49	\$4,564	Yes
Whitewater WMA	Winona	10810223	9	\$838	Yes
Whitewater WMA	Winona	10810223	58	\$5,402	Yes
Heublin WMA	Winona	10709210	20	\$1,863	Yes
Herber Prairie WMA	Winona	10709231	20	\$1,863	Yes
Whitewater WMA - Steffen Ridge	Winona	10810233	4	\$372	Yes
Whitewater WMA - Firetower	Winona	10710215	6	\$558	Yes
Whitewater WMA - Callahan	Winona	10710219	11	\$1,024	Yes
Whitewater WMA - Heubleins Prairie	Winona	10709231	26	\$2,421	Yes
Whitewater WMA - Herber Prairie	Winona	10709236	20	\$1,863	Yes
Whitewater WMA - Kramer Ridge South	Winona	10710201	33	\$3,074	Yes
Whitewater WMA - Kramer Ridge North	Winona	10710201	32	\$2,980	Yes
Whitewater WMA - Marnach Valley Tract	Winona	10810233	50	\$4,657	Yes
Whitewater WMA - Anna Schmidt Tract	Winona	10810228	400	\$37,261	Yes
Whitewater WMA - Heubleins Tract	Winona	10810225	20	\$1,863	Yes
Whitewater WMA - Fisher Hill Tract	Winona	10810222	45	\$4,191	Yes
Whitewater WMA - Jacobs Hill	Winona	10810215	2	\$186	Yes
Whitewater WMA - Beaver Bluff	Winona	10810216	5	\$465	Yes
Whitewater WMA - Melcher Ridge	Winona	10810202	39	\$3,632	Yes
Whitewater WMA - Callahan	Winona	10710219	190	\$17,699	Yes
Whitewater WMA - Appleby	Winona	10810203	85	\$7,918	Yes
Whitewater WMA	Winona	10810223	111	\$10,340	Yes
Whitewater WMA - Fisher Hill 2	Winona	10810216	1	\$93	Yes
Whitewater WMA - Jacobs Hill	Winona	10810222	2	\$186	Yes
Whitewater WMA - Beaver Bluff	Winona	10810215	5	\$465	Yes
Whitewater WMA - Fisher Hill	Winona	10810216	15	\$1,397	Yes
Whitewater WMA - Hwy 74	Winona	10710203	3	\$279	Yes
Whitewater WMA	Winona	10810223	140	\$13,041	Yes
Whitewater WMA	Winona	10810223	550	\$51,234	Yes
Pelican Lake WMA	Wright	12025201	1	\$93	Yes
Goose Lake WPA	Wright	12028210	68	\$6,334	Yes
Pelican Lake WPA	Wright	12023205	43	\$4,005	Yes
Pelican Lake WPA	Wright	12025202	57	\$5,309	Yes
Pelican Lake WMA	Wright	12025201	35	\$3,260	Yes
Pelican Lake WPA	Wright	12125236	147	\$13,693	Yes
Temperance WPA	Wright	11928209	5	\$465	Yes
Grass Lake WMA	Wright	11828213	42	\$3,912	Yes
Minnesota Veterans WMA	Wright	12227221	54	\$5,030	Yes
Pelican Lake WMA	Wright	12025201	51	\$4,750	Yes
St. Michael Meadows WMA	Wright	12024215	9	\$838	Yes
Swede Forest SNA	Yellow Medicine	11438212	13	\$1,210	Yes

Parcel Map



- Protect in Easement
- ▲ Protect in Fee with PILT
- ▲ Protect in Fee W/O PILT
- ★ Restore
- ✕ Enhance
- ✕ Other