



## Lessard-Sams Outdoor Heritage Council

Metro Big Rivers Habitat Phase 7  
Laws of Minnesota 2016 Final Report

---

### General Information

**Date:** 03/28/2023

**Project Title:** Metro Big Rivers Habitat Phase 7

**Funds Recommended:** \$4,000,000

**Legislative Citation:** ML 2016, Ch. 172, Art. 1, Sec. 2, Subd. 5(b)

**Appropriation Language:** \$4,000,000 the second year is to the commissioner of natural resources for agreements to acquire land in fee and permanent conservation easements and to restore and enhance natural systems associated with the Mississippi, Minnesota, and St. Croix Rivers within the metropolitan area as follows: \$500,000 to Minnesota Valley National Wildlife Refuge Trust, Inc.; \$430,000 to Friends of the Mississippi River; \$1,170,000 to Great River Greening; \$800,000 to The Trust for Public Land; and \$1,100,000 to Minnesota Land Trust, of which up to \$60,000 to Minnesota Land Trust is to establish a monitoring and enforcement fund as approved in the accomplishment plan and subject to Minnesota Statutes, section 97A.056, subdivision 17. A list of proposed land acquisitions and permanent conservation easements must be provided as part of the required accomplishment plan.

### Manager Information

**Manager's Name:** Deborah Loon

**Title:** Executive Director

**Organization:** Minnesota Valley National Wildlife Refuge Trust, Inc. (Metro Big Rivers)

**Address:** 3815 East American Boulevard

**City:** Bloomington, MN 55425

**Email:** dloon@mnvalleytrust.org

**Office Number:** 612-801-1935

**Mobile Number:** 612-801-1935

**Fax Number:**

**Website:** www.mnvalleytrust.org

### Location Information

**County Location(s):** Anoka, Washington, Ramsey, Dakota, Carver, Chisago, Hennepin, Sherburne and Isanti.

**Eco regions in which work will take place:**

- Metro / Urban

**Activity types:**

- Protect in Easement
- Protect in Fee
- Restore
- Enhance

**Priority resources addressed by activity:**

- Wetlands
- Prairie
- Forest
- Habitat

**Narrative**

**Summary of Accomplishments**

The Metro Big Rivers (MBR) partners successfully completed their work with the Phase 7 / ML2016 OHF appropriation. MBR exceeded original acreage goals by 14% and completed work on a total of 1,199 acres. Partners protected 145 acres through fee title acquisition and 194 acres through permanent conservation easement, restored 241 acres and enhanced 619 acres.

MBR 7 expended 99% of the OHF funds granted and leveraged the grant by 49% with almost \$2 million in other funds.

**Process & Methods**

Brief summaries of the work completed under this phase of Metro Big Rivers are provided below. More in-depth information of projects completed is provided in attachments to this final report.

Friends of the Mississippi River (FMR) completed its work under this grant as of June 30, 2022. FMR restored habitat at 197 acres at 2 sites, exceeding its original plan of 160 acres. FMR was able to expand its planned work area at the William H. Houlton Conservation Area and add the adjacent Bailey Point Nature Preserve to its work under this grant.

Great River Greening (GRG) concluded its restoration and enhancement work as of June 30, 2021. Through this grant, GRG restored 4 acres and enhanced 619 acres of habitat (623 acres total) at 7 sites in the metro region, slightly exceeding its original goal. The project sites were Izaak Walton League Minnesota Valley Gateway, Lebanon Hills Regional Park Phase 1, Lilydale Bluffs, Minnehaha Creek Greenway, Pond Dakota Mission, Rum River Regional Park & Cedar Creek Conservation Area, and Trout Brook Afton Phase 1 (5 are detailed in the attachment).

Minnesota Land Trust (MLT) concluded its land protection work associated with this grant in June 2019. MLT protected 3 sites under conservation easement and exceeded its projected goals for the grant, protecting 194 acres (relative to the 100 acres proposed) and 2.18 miles of shoreline. MLT leveraged \$1,055,000 in landowner donations of easement value through this grant. MLT easement projects completed in this phase are:

- Medvecky Woods (Baker) - An 80-acre property protecting high-quality oak-maple-basswood forest, tamarack swamp, and hardwood swamp. The property lies within the Medvecky Woods Site of Outstanding Biodiversity Significance and adjacent to Cedar Creek Natural History Area and conservation easements held by the Land Trust.
- Pickerel Lake (Imholte) - This 42-acre property is dominated by oak forest and lies along the shorelines of

Pickerel and Fish Lakes. The property lies adjacent to another conservation easement held by the Land Trust.

- Oak Lake (Phyllis Wheatly Community Center) - This 83-acre property (72 acres funded through this grant) contains a DNR-designated Big Woods Heritage Forest and nearly 1.5 miles of shoreline on Oak Lake. The conservation easement forever protects high quality habitat within Camp Katherine Parsons, one of the nation's earliest camps focused on serving the needs of African-American youth.

Minnesota Valley Trust (MVT) completed its work under this grant as of December 31, 2022. With about half of the grant, MVT protected through fee title acquisition 26 acres of a high-priority 77-acre parcel for the Rapids Lake Unit of the Minnesota Valley National Wildlife Refuge. The balance of the site was acquired with the MBR 6 / ML 2015 grant and \$794,462 in other, private funds.

MVT then used the balance of the MBR 7 grant to complete the initial habitat restoration of 40 acres of the acquired parcel, converting the building site and crop field to prairie and wetland. Simultaneously, MN Land Trust conducted initial restoration of 35 acres of degraded oak savanna on the site through MBR 6 / ML 2015. Follow-up treatments to maintain and enhance the restored 77 acres will be completed by MVT and USFWS under the MBR 9 / ML2019 grant.

The Trust for Public Land (TPL) concluded its land protection work associated with this grant in January 2018, when it acquired a 119-acre addition to the Janet Johnson WMA. TPL exceeded its target of protecting 80 acres.

### **How did the program address habitats of significant value for wildlife species of greatest conservation need, threatened or endangered species, and/or list targeted species?**

Metro Big Rivers projects improved habitat values for wildlife and SGCN, including birds using the Mississippi River migratory corridor, pollinators, wildlife, and an array of rare and endangered species.

FMR converted crop field to diverse prairie and restored forest at two sites on the Mississippi and Elk Rivers in Sherburne County. The restoration provides critical habitat for resident and migrant birds (including five SGCNs surveyed post-restoration), native pollinators, and mammals. The sites are partially located in the high potential zone for Rusty Patched bumblebee. Post-restoration surveys documented increases in pollinator abundance and diversity.

GRG worked on public conservation lands to improve habitat values for wildlife and SGCN, including birds using the Mississippi River migratory corridor and pollinators. Work restored and enhanced riverine, forest, oak savanna, prairie, and wetland habitat at seven conservation sites.

MLT prevented fragmentation around lakes experiencing development pressure (Pickerel and Fish Lakes), as well as areas of biological significance (Medvecky Woods). MLT conservation easements also protected two miles of shoreline and associated riparian habitat on Pickerel, Fish, and Oak Lakes. Over six bird species designated as SGCN have been identified on the Oak Lake conservation easement alone.

MVT acquired lands identified through the USFWS Comprehensive Conservation Plan, which prioritizes lands for high biodiversity, connectivity, and ability to preserve habitat for SGCN. MVT's acquisition protected oak savanna, remnant prairie, oak basswood forest and seasonal ephemeral wetlands. A bioblitz identified more than 200 species, including the endangered Henslow's sparrow, bloodroot, pasqueflower, kittentail (state threatened species), buffalo bean, bergamot, common milkweed, whorled milkweed, green milkweed and bur oak. Restoration created habitat for grassland and savanna-dependent birds, other wildlife and pollinators, including the endangered Rusty Patched bumble bee and monarch.

TPL acquired land prioritized in Minnesota's Wildlife Action Plan (WAP) due to its high biodiversity significance, connectivity to existing public lands, and ability to preserve habitat for SGCN. Acquisition for the Janet Johnson Memorial WMA protected two habitat types identified within the WAP's St. Croix River Watershed Conservation Focus Area and key wildlife habitat utilized by 67 listed SGCN within the Anoka Sand Plain ecological subsection.

### **How did the program use science-based targeting that leveraged or expanded corridors and complexes, reduced fragmentation, or protected areas in the MN County Biological Survey.**

Restoration and enhancement partners Friends of the Mississippi River and Great River Greening used science-based criteria to prioritize activities. This included consideration of the highest quality natural areas (as determined by MBS), as well as prioritization of work within important ecological corridors identified by a coalition of conservation partners and based on rare species and sensitive landscape features. This prioritization ensures that projects reduce fragmentation and link natural areas within already-established corridors. All of the restoration and enhancement sites are located along or near the three big rivers and important tributaries – some of the most important ecological corridors for migrating and sedentary plant and animal life.

Minnesota Land Trust used a set of ecological criteria, informed by project cost, to prioritize conservation easement projects with the highest available cost: benefit ratio. Scoring of ecological value closely aligned with and was informed by presence of document SGCN, T&E species, high-quality habitats, and location relative to priority areas identified within the State Wildlife Action Plan and other sources.

The Minnesota Valley Trust and Trust for Public Land prioritize work through science-based processes led by the public entities that will own interest in the properties (e.g., MN DNR, USFWS). Plans followed include MBS, RESA, Metropolitan Conservation Corridors, Minnesota State Wildlife Action Plan, and the Comprehensive Conservation Plan for the Minnesota Valley National Wildlife Refuge. Both fee title acquisitions completed under this phase expanded priority habitat complexes and conservation corridors.

### **Explain Partners, Supporters, & Opposition**

Metro Big Rivers projects are designed and completed thanks to an extensive network of partners and supporters. Projects funded through this phase faced no opposition.

Partners on FMR and GRG projects included local units of government, citizen "friends" groups and volunteers. FMR also partnered with USFWS and Elk River High School, and contracted Monarch Joint Venture and Wildlife Research and Consulting Services to survey the restoration's effects on wildlife.

MLT worked with the Phyllis Wheatly Community Center (PWCC), a North Minneapolis nonprofit that for decades provided outdoor experiences to low-income youth at Camp Katherine Parsons. Closure of the camp in the 1990s created an access gap. The easement protected natural lands surrounding the camp and revitalized services to youth.

MVT and TPL worked with public partners to identify and conclude protection projects. The two sites expanded have strong public support and are popular destinations for outdoor recreation, including hunting.

### **Exceptional challenges, expectations, failures, opportunities, or unique aspects of program**

All Metro Big Rivers projects were exceptional opportunities because of the habitat protected or improved in the metro area for wildlife, SGCN, and the 3 million area residents. We provide two examples here and refer to the attached project summaries for more:

- Covering over 106 acres with extensive shoreline on Oak Lake in Carver County, the easement over the Camp Katherine Parsons property was a tremendous opportunity. It prevented residential development that would have destroyed habitats for the trumpeter swans, pelicans, and songbirds that frequent Oak Lake. And it preserved the potential for the camp to be a community resource forever.
- Fee protection of 77 acres to complete the Rapids Lake Unit of the Refuge brought the entirety of Rapids Lake into Refuge management and created the opportunity to restore a degraded oak savanna and convert a former agricultural building site and field back to prairie and wetland.

**What other dedicated funds may collaborate with or contribute to this program?**

- N/A

**What is the plan to sustain and/or maintain this work after the Outdoor Heritage Funds are expended?**

All public partners committed to maintaining the restoration / enhancement habitat improvements.

FMR and GRG will support efforts to raise public and private sources to continue the work beyond this grant and will work cooperatively with partners to ensure the project benefits are maintained. FMR also continues to bring stewardship funding to these sites and to host yearly volunteer events. Concurrent with this grant, FMR also helped to establish the Friends of the WHHCA group, which now boasts a listserve of over 75 people that volunteer to maintain and enhance the current restoration.

Land protected by MLT through conservation easements is sustained through state-of-the art easement stewardship standards and practices. MLT is nationally accredited, with a successful easement stewardship program that includes annual property monitoring and legal defense as necessary.

Land acquired in fee title by MVT for the Minnesota Valley National Wildlife Refuge will be sustained and maintained over the long-term by the USFWS. Habitat restoration will be completed by MVT prior to transfer to the USFWS.

Land acquired in fee title by TPL was conveyed to the DNR for permanent stewardship as a WMA. Initial site development and restoration included tallgrass prairie reconstruction, woody invasive removal, and limited reforestation. WMAs are the backbone of DNR's wildlife management efforts in Minnesota; as such they are prioritized for management and sustained maintenance.

**Actions to Maintain Project Outcomes**

Year	Source of Funds	Step 1	Step 2	Step 3
Ongoing	FMR, GRG, Public Partners / Landowners	Monitor and assess the completed Restoration and Enhancement projects	Target actions to maintain habitat, engage partners and landowners	Take restorative action as needed to correct any damage
Ongoing	MLT Stewardship & Enforcement Fund	Annually monitor completed Easements	Conduct enforcement actions, as needed	-
Ongoing	MVT, TPL, Public Partners (DNR, USFWS)	Post property that has been protected through Fee Title Acquisition	Develop and implement habitat restoration and enhancement plans	Monitor and assess the property, identify and implement any needed actions to correct damage

## Budget

### Grand Totals Across All Partnerships

Item	Requested	AP Amount	Spent	Leverage	Received Leverage	Leverage Source	Original Total	Final Total
Personnel	\$309,500	\$353,000	\$343,400	\$206,500	\$197,500	City of Elk River, FMR, IWLA, SWWD, Dakota County, MCWD, Private funds	\$516,000	\$540,900
Contracts	\$1,091,500	\$1,416,200	\$1,391,900	\$115,600	\$220,400	City of Elk River, South Washington Watershed District	\$1,207,100	\$1,612,300
Fee Acquisition w/ PILT	\$311,400	\$585,000	\$585,000	\$50,000	-	-, Various state, local and private funds	\$361,400	\$585,000
Fee Acquisition w/o PILT	\$796,500	\$240,000	\$240,000	\$50,000	\$244,500	-, MVT - Private, Various state, local and private funds	\$846,500	\$484,500
Easement Acquisition	\$931,000	\$865,200	\$865,100	\$198,000	\$1,103,000	-, Vail Resorts, Landowner donated value	\$1,129,000	\$1,968,100
Easement Stewardship	\$60,000	\$60,000	\$60,000	-	-	-	\$60,000	\$60,000
Travel	\$10,000	\$10,500	\$8,800	\$300	-	-, MCWD, St. Louis Park	\$10,300	\$8,800
Professional Services	\$79,700	\$188,100	\$184,100	-	\$108,400	-, South Washington Watershed District	\$79,700	\$292,500
Direct Support Services	\$67,700	\$48,700	\$48,300	\$57,700	\$86,500	-, Greening, Private funds	\$125,400	\$134,800
DNR Land Acquisition Costs	\$23,500	\$20,000	\$20,000	-	-	-	\$23,500	\$20,000
Capital Equipment	-	-	-	-	-	-	-	-
Other Equipment/Tools	\$5,600	\$5,600	\$5,300	-	-	-	\$5,600	\$5,300
Supplies/Materials	\$223,600	\$194,700	\$196,900	-	-	-	\$223,600	\$196,900
DNR IDP	\$90,000	\$13,000	\$13,000	\$15,000	\$2,600	-, SWWD	\$105,000	\$15,600
<b>Grand Total</b>	<b>\$4,000,000</b>	<b>\$4,000,000</b>	<b>\$3,961,800</b>	<b>\$693,100</b>	<b>\$1,962,900</b>	-	<b>\$4,693,100</b>	<b>\$5,924,700</b>

**Partner: Great River Greening**

**Totals**

Item	Requested	AP Amount	Spent	Leverage	Received Leverage	Leverage Source	Original Total	Final Total
Personnel	\$121,100	\$123,600	\$124,200	\$146,700	\$124,200	IWLA, SWWD, Dakota County, MCWD	\$267,800	\$248,400
Contracts	\$781,500	\$868,800	\$868,800	\$100,000	\$220,400	South Washington Watershed District	\$881,500	\$1,089,200
Fee Acquisition w/ PILT	-	-	-	-	-	-	-	-
Fee Acquisition w/o PILT	-	-	-	-	-	-	-	-
Easement Acquisition	-	-	-	\$48,000	\$48,000	Vail Resorts	\$48,000	\$48,000
Easement Stewardship	-	-	-	-	-	-	-	-
Travel	\$5,000	\$5,200	\$4,700	\$300	-	MCWD, St. Louis Park	\$5,300	\$4,700
Professional Services	\$6,700	\$100,900	\$100,900	-	\$108,400	South Washington Watershed District	\$6,700	\$209,300
Direct Support Services	\$32,500	\$5,200	\$5,200	\$32,500	\$59,800	Greening	\$65,000	\$65,000
DNR Land Acquisition Costs	-	-	-	-	-	-	-	-
Capital Equipment	-	-	-	-	-	-	-	-
Other Equipment/Tools	\$5,600	\$5,600	\$5,300	-	-	-	\$5,600	\$5,300
Supplies/Materials	\$127,600	\$60,700	\$60,900	-	-	-	\$127,600	\$60,900
DNR IDP	\$90,000	-	-	\$15,000	\$2,600	SWWD	\$105,000	\$2,600
<b>Grand Total</b>	<b>\$1,170,000</b>	<b>\$1,170,000</b>	<b>\$1,170,000</b>	<b>\$342,500</b>	<b>\$563,400</b>	-	<b>\$1,512,500</b>	<b>\$1,733,400</b>

**Personnel**

Position	Annual FTE	Years Working	Funding Request	Leverage	Leverage Source	Total
GRG Personnel	-	3.0	\$124,200	\$124,200	IWLA, SWWD, Dakota County, MCWD	\$248,400

**Partner: Friends of the Mississippi River**

**Totals**

Item	Requested	AP Amount	Spent	Leverage	Received Leverage	Leverage Source	Original Total	Final Total
Personnel	\$22,000	\$22,000	\$21,300	\$1,000	\$16,000	City of Elk River, FMR	\$23,000	\$37,300
Contracts	\$310,000	\$310,000	\$288,300	\$15,600	-	City of Elk River	\$325,600	\$288,300
Fee Acquisition w/ PILT	-	-	-	-	-	-	-	-
Fee Acquisition w/o PILT	-	-	-	-	-	-	-	-
Easement Acquisition	-	-	-	-	-	-	-	-
Easement Stewardship	-	-	-	-	-	-	-	-
Travel	\$2,000	\$2,000	\$1,100	-	-	-	\$2,000	\$1,100
Professional Services	-	-	-	-	-	-	-	-
Direct Support Services	-	-	-	-	-	-	-	-
DNR Land Acquisition Costs	-	-	-	-	-	-	-	-
Capital Equipment	-	-	-	-	-	-	-	-
Other Equipment/Tools	-	-	-	-	-	-	-	-
Supplies/Materials	\$96,000	\$96,000	\$97,300	-	-	-	\$96,000	\$97,300
DNR IDP	-	-	-	-	-	-	-	-
<b>Grand Total</b>	<b>\$430,000</b>	<b>\$430,000</b>	<b>\$408,000</b>	<b>\$16,600</b>	<b>\$16,000</b>	-	<b>\$446,600</b>	<b>\$424,000</b>

**Personnel**

Position	Annual FTE	Years Working	Funding Request	Leverage	Leverage Source	Total
FMR Personnel	0.02	4.0	\$21,300	\$16,000	City of Elk River, FMR	\$37,300



**Partner: Minnesota Land Trust**

**Totals**

Item	Requested	AP Amount	Spent	Leverage	Received Leverage	Leverage Source	Original Total	Final Total
Personnel	\$44,000	\$85,000	\$78,600	-	-	-	\$44,000	\$78,600
Contracts	-	\$4,500	\$4,500	-	-	-	-	\$4,500
Fee Acquisition w/ PILT	-	-	-	-	-	-	-	-
Fee Acquisition w/o PILT	-	-	-	-	-	-	-	-
Easement Acquisition	\$931,000	\$865,200	\$865,100	\$150,000	\$1,055,000	Landowner donated value	\$1,081,000	\$1,920,100
Easement Stewardship	\$60,000	\$60,000	\$60,000	-	-	-	\$60,000	\$60,000
Travel	\$2,000	\$2,300	\$2,000	-	-	-	\$2,000	\$2,000
Professional Services	\$53,000	\$51,700	\$44,200	-	-	-	\$53,000	\$44,200
Direct Support Services	\$10,000	\$18,300	\$16,400	-	-	-	\$10,000	\$16,400
DNR Land Acquisition Costs	-	-	-	-	-	-	-	-
Capital Equipment	-	-	-	-	-	-	-	-
Other Equipment/Tools	-	-	-	-	-	-	-	-
Supplies/Materials	-	-	-	-	-	-	-	-
DNR IDP	-	\$13,000	\$13,000	-	-	-	-	\$13,000
<b>Grand Total</b>	<b>\$1,100,000</b>	<b>\$1,100,000</b>	<b>\$1,083,800</b>	<b>\$150,000</b>	<b>\$1,055,000</b>	-	<b>\$1,250,000</b>	<b>\$2,138,800</b>

**Personnel**

Position	Annual FTE	Years Working	Funding Request	Leverage	Leverage Source	Total
Conservation, legal and support staff	0.17	3.0	\$78,600	-	-	\$78,600

**Partner: Minnesota Valley National Wildlife Refuge Trust, Inc.**

**Totals**

Item	Requested	AP Amount	Spent	Leverage	Received Leverage	Leverage Source	Original Total	Final Total
Personnel	-	-	-	-	-	-	-	-
Contracts	-	\$222,000	\$221,300	-	-	-	-	\$221,300
Fee Acquisition w/ PILT	-	-	-	-	-	-	-	-
Fee Acquisition w/o PILT	\$496,500	\$240,000	\$240,000	-	\$244,500	MVT - Private	\$496,500	\$484,500
Easement Acquisition	-	-	-	-	-	-	-	-
Easement Stewardship	-	-	-	-	-	-	-	-
Travel	-	-	-	-	-	-	-	-
Professional Services	-	-	-	-	-	-	-	-
Direct Support Services	-	-	-	-	-	-	-	-
DNR Land Acquisition Costs	\$3,500	-	-	-	-	-	\$3,500	-
Capital Equipment	-	-	-	-	-	-	-	-
Other Equipment/Tools	-	-	-	-	-	-	-	-
Supplies/Materials	-	\$38,000	\$38,700	-	-	-	-	\$38,700
DNR IDP	-	-	-	-	-	-	-	-
<b>Grand Total</b>	<b>\$500,000</b>	<b>\$500,000</b>	<b>\$500,000</b>	<b>-</b>	<b>\$244,500</b>	<b>-</b>	<b>\$500,000</b>	<b>\$744,500</b>

## Partner: Trust for Public Land

### Totals

Item	Requested	AP Amount	Spent	Leverage	Received Leverage	Leverage Source	Original Total	Final Total
Personnel	\$122,400	\$122,400	\$119,300	\$58,800	\$57,300	Private funds	\$181,200	\$176,600
Contracts	-	\$10,900	\$9,000	-	-	-	-	\$9,000
Fee Acquisition w/ PILT	\$311,400	\$585,000	\$585,000	\$50,000	-	Various state, local and private funds	\$361,400	\$585,000
Fee Acquisition w/o PILT	\$300,000	-	-	\$50,000	-	Various state, local and private funds	\$350,000	-
Easement Acquisition	-	-	-	-	-	-	-	-
Easement Stewardship	-	-	-	-	-	-	-	-
Travel	\$1,000	\$1,000	\$1,000	-	-	-	\$1,000	\$1,000
Professional Services	\$20,000	\$35,500	\$39,000	-	-	-	\$20,000	\$39,000
Direct Support Services	\$25,200	\$25,200	\$26,700	\$25,200	\$26,700	Private funds	\$50,400	\$53,400
DNR Land Acquisition Costs	\$20,000	\$20,000	\$20,000	-	-	-	\$20,000	\$20,000
Capital Equipment	-	-	-	-	-	-	-	-
Other Equipment/Tools	-	-	-	-	-	-	-	-
Supplies/Materials	-	-	-	-	-	-	-	-
DNR IDP	-	-	-	-	-	-	-	-
<b>Grand Total</b>	<b>\$800,000</b>	<b>\$800,000</b>	<b>\$800,000</b>	<b>\$184,000</b>	<b>\$84,000</b>	-	<b>\$984,000</b>	<b>\$884,000</b>

### Personnel

Position	Annual FTE	Years Working	Funding Request	Leverage	Leverage Source	Total
Protection and legal staff	0.4	3.0	\$119,300	\$57,300	Private funds	\$176,600

### Direct Support Services

**How did you determine which portions of the Direct Support Services of your shared support services is direct to this program?**

GRG - Calculates support services as a percent of direct expenses and estimates that 8% of direct expenses were required for this grant.

MLT - Determines the direct costs of outreach, IT, printing, grant support and other allowable direct organizational costs associated with delivering completed conservation easements.

TPL - Based upon the approved federal rate for reimbursement of these costs.

### Explain any budget challenges or successes:

No budget challenges were encountered by any Metro Big Rivers partners in completing these projects. Metro Big Rivers partners were able to stretch the OHF grant funds to achieve greater outcomes than originally anticipated, as well as bring significantly more leverage to projects than anticipated.

**Total Revenue:** \$0

**Revenue Spent: \$0**

**Revenue Balance: \$0**

**Of the money disclosed above, what are the appropriate uses of the money:**

- E. This is not applicable as there was no revenue generated.

## Output Tables

### Acres by Resource Type (Table 1)

Type	Wetland (AP)	Wetland (Final)	Prairie (AP)	Prairie (Final)	Forest (AP)	Forest (Final)	Habitat (AP)	Habitat (Final)	Total Acres (AP)	Total Acres (Final)
Restore	0	4	160	233	0	0	4	4	164	241
Protect in Fee with State PILT Liability	8	35	8	35	14	49	10	0	40	119
Protect in Fee w/o State PILT Liability	48	1	33	15	49	10	10	0	140	26
Protect in Easement	0	0	0	0	100	194	0	0	100	194
Enhance	0	0	75	76	538	543	0	0	613	619
<b>Total</b>	<b>56</b>	<b>40</b>	<b>276</b>	<b>359</b>	<b>701</b>	<b>796</b>	<b>24</b>	<b>4</b>	<b>1,057</b>	<b>1,199</b>

### How many of these Prairie acres are Native Prairie? (Table 1b)

Type	Native Prairie (AP)	Native Prairie (Final)
Restore	0	0
Protect in Fee with State PILT Liability	0	0
Protect in Fee w/o State PILT Liability	0	0
Protect in Easement	0	0
Enhance	75	76
<b>Total</b>	<b>75</b>	<b>76</b>

### Total Requested Funding by Resource Type (Table 2)

Type	Wetland (AP)	Wetland (Final)	Prairie (AP)	Prairie (Final)	Forest (AP)	Forest (Final)	Habitat (AP)	Habitat (Final)	Total Funding (AP)	Total Funding (Final)
Restore	-	\$19,700	\$430,000	\$648,300	-	-	\$719,600	\$731,600	\$1,149,600	\$1,399,600
Protect in Fee with State PILT Liability	\$80,000	\$232,000	\$80,000	\$232,000	\$144,000	\$336,000	\$96,000	-	\$400,000	\$800,000
Protect in Fee w/o State PILT Liability	\$280,000	\$18,000	\$205,000	\$139,000	\$319,000	\$83,000	\$96,000	-	\$900,000	\$240,000
Protect in Easement	-	-	-	-	\$1,100,000	\$1,083,800	-	-	\$1,100,000	\$1,083,800
Enhance	-	-	\$219,900	\$210,400	\$230,500	\$228,000	-	-	\$450,400	\$438,400
<b>Total</b>	<b>\$360,000</b>	<b>\$269,700</b>	<b>\$934,900</b>	<b>\$1,229,700</b>	<b>\$1,793,500</b>	<b>\$1,730,800</b>	<b>\$911,600</b>	<b>\$731,600</b>	<b>\$4,000,000</b>	<b>\$3,961,800</b>

### Acres within each Ecological Section (Table 3)

Type	Metro / Urban (AP)	Metro / Urban (Final)	Forest / Prairie (AP)	Forest / Prairie (Final)	SE Forest (AP)	SE Forest (Final)	Prairie (AP)	Prairie (Final)	N. Forest (AP)	N. Forest (Final)	Total (AP)	Total (Final)
------	--------------------	-----------------------	-----------------------	--------------------------	----------------	-------------------	--------------	-----------------	----------------	-------------------	------------	---------------

Restore	164	241	0	0	0	0	0	0	0	0	164	241
Protect in Fee with State PILT Liability	40	119	0	0	0	0	0	0	0	0	40	119
Protect in Fee w/o State PILT Liability	140	26	0	0	0	0	0	0	0	0	140	26
Protect in Easement	100	194	0	0	0	0	0	0	0	0	100	194
Enhance	613	619	0	0	0	0	0	0	0	0	613	619
<b>Total</b>	<b>1,057</b>	<b>1,199</b>	<b>0</b>	<b>0</b>	<b>0</b>	<b>0</b>	<b>0</b>	<b>0</b>	<b>0</b>	<b>0</b>	<b>1,057</b>	<b>1,199</b>

## Total Requested Funding within each Ecological Section (Table 4)

Type	Metro/ Urban (AP)	Metro/ Urban (Final)	Forest / Prairie (AP)	Forest / Prairie (Final)	SE Fores t (AP)	SE Forest (Final )	Prairie e (AP)	Prairie e (Final)	N. Fores t (AP)	N. Forest (Final )	Total (AP)	Total (Final)
Restore	\$1,149,600	\$1,399,600	-	-	-	-	-	-	-	-	\$1,149,600	\$1,399,600
Protect in Fee with State PILT Liability	\$400,000	\$800,000	-	-	-	-	-	-	-	-	\$400,000	\$800,000
Protect in Fee w/o State PILT Liability	\$900,000	\$240,000	-	-	-	-	-	-	-	-	\$900,000	\$240,000
Protect in Easemen t	\$1,100,000	\$1,083,800	-	-	-	-	-	-	-	-	\$1,100,000	\$1,083,800
Enhance	\$450,400	\$438,400	-	-	-	-	-	-	-	-	\$450,400	\$438,400
<b>Total</b>	<b>\$4,000,000</b>	<b>\$3,961,800</b>	-	-	-	-	-	-	-	-	<b>\$4,000,000</b>	<b>\$3,961,800</b>

### Target Lake/Stream/River Feet or Miles

8

## Outcomes

### Programs in metropolitan urbanizing region:

- A network of natural land and riparian habitats will connect corridors for wildlife and species in greatest conservation need ~ *Two examples illustrate how this work is measured and evaluated:*
  - *FMR's conversion of ag lands to prairie expanded habitats along the Mississippi River and connected the Bailey Point Nature Preserve and Mississippi Islands SNA. FMR uses this site as an outdoor laboratory to evaluate restoration practices and impact on target species.*
  - *MVT acquired an in-holding to complete a Refuge unit and converted the crop field to prairie and wetland, while MLT restored the degraded oak savanna. An initial and future bioblitzes by FWS and Trust biology staff, apprentices, partners and volunteers will measure increases in SGCN and other species.*

## Parcels

### Sign-up Criteria?

[Yes - Sign up criteria is attached](#)

### Restore / Enhance Parcels

Name	County	TRDS	Acres	Est Cost	Existing Protection
GRG - Rum River Central Regional Park / Cedar Creek Conservation Area	Anoka	03224206	500	\$86,400	Yes
GRG - Lebanon Hills Regional Park, Phase 1	Dakota	02723235	75	\$210,400	Yes
GRG - Minnehaha Creek Greenway	Hennepin	11721220	28	\$59,000	Yes
GRG - Pond Dakota Mission City Park/MN Valley NWR	Hennepin	02724222	4	\$36,900	Yes
GRG - Izaak Walton League Minnesota Valley Gateway	Hennepin	11521205	10	\$28,300	Yes
GRG - Lilydale Bluffs	Ramsey	02823212	0	\$19,200	Yes
FMR - Houlton Farm	Sherburne	03226204	180	\$430,000	Yes
FMR - Bailey Point Nature Preserve	Sherburne	03326233	17	\$62,900	Yes
GRG - Trout Brook Restoration, Phase 1	Washington	02720203	4	\$728,800	Yes

### Protect Parcels

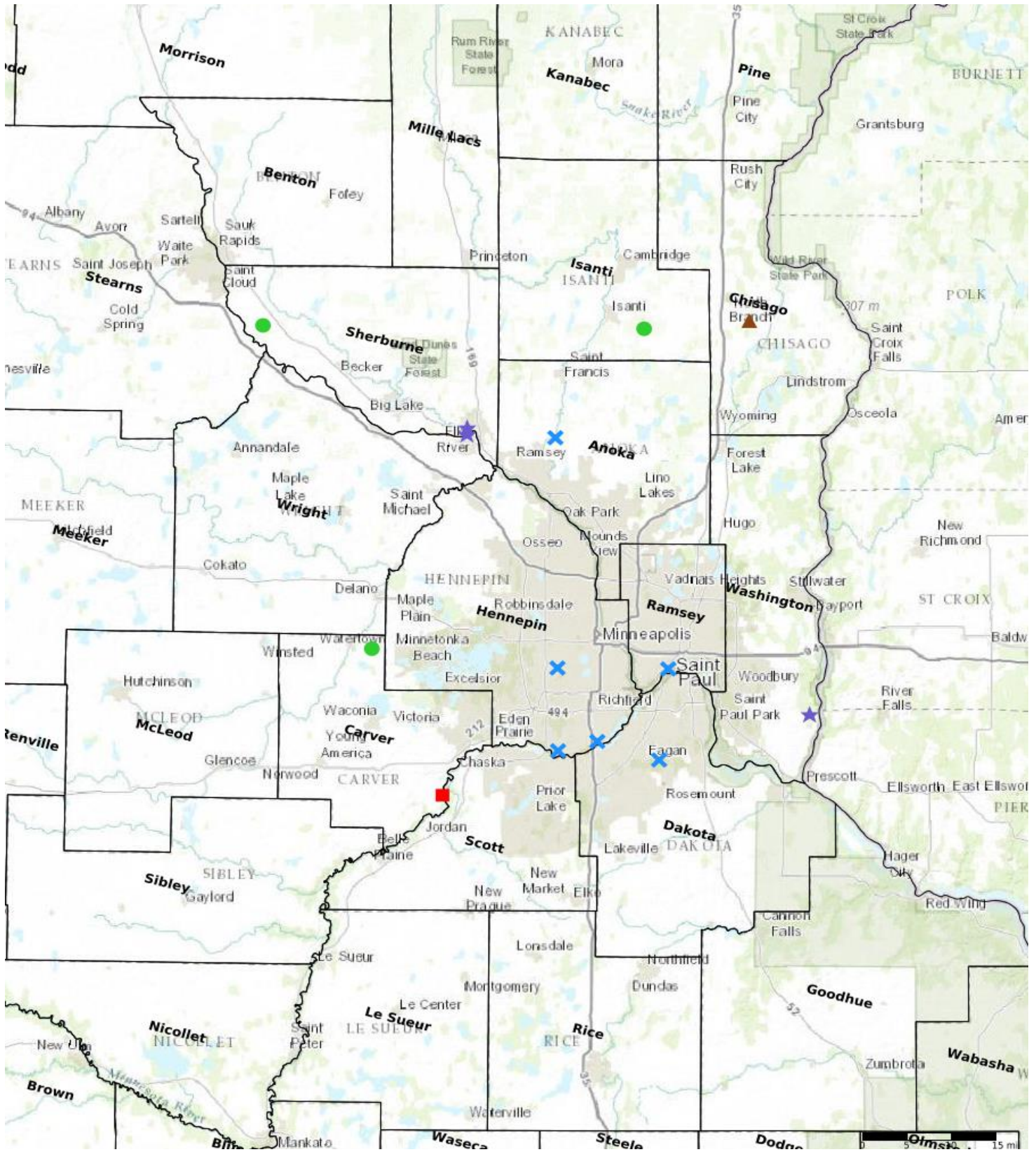
Name	County	TRDS	Acres	Est Cost	Existing Protection
MLT - Oak Lake (Phyllis Wheatley Community Center)	Carver	11725211	72	\$865,000	No
MLT - Medveckey Woods (Baker)	Isanti	03423202	80	\$0	No
MLT - Pickerel Lake (Imholte)	Sherburne	03430203	42	\$0	No

### Protect Parcels with Buildings

Name	County	TRDS	Acres	Est Cost	Existing Protection	Buildings	Value of Buildings
MVT - Rapids Lake Unit Addition, MN Valley National Wildlife Refuge	Carver	11523231	26	\$744,462	No	4	\$370,000
TPL - Janet Johnson Memorial WMA Addition	Chisago	03521235	119	\$570,000	No	1	\$0



# Parcel Map



- Protect in Easement
- ▲ Protect in Fee with PILT
- Protect in Fee W/O PILT
- ★ Restore
- ✕ Enhance
- ⊕ Other