



Lessard-Sams Outdoor Heritage Council

Metro Big Rivers - Phase VI
Laws of Minnesota 2015 Final Report

General Information

Date: 04/11/2023

Project Title: Metro Big Rivers - Phase VI

Funds Recommended: \$2,000,000

Legislative Citation: ML 2015, First Sp. Session, Ch. 2, Art. 1, Sec. 2, Subd. 5(b)

Appropriation Language: \$2,000,000 in the first year is to the commissioner of natural resources for agreements to acquire land in fee and in permanent conservation easements and to restore and enhance natural systems associated with the Mississippi, Minnesota, and St. Croix Rivers as follows: \$475,000 to Minnesota Valley National Wildlife Refuge Trust, Inc.; \$275,000 to Friends of the Mississippi River; \$400,000 to Great River Greening; \$375,000 to Minnesota Land Trust; and \$475,000 to The Trust for Public Land. Up to \$60,000 to Minnesota Land Trust is for establishing a monitoring and enforcement fund as approved in the accomplishment plan and subject to Minnesota Statutes, section 97A.056, subdivision 17. A list of proposed land acquisitions and permanent conservation easements must be provided as part of the required accomplishment plan.

Manager Information

Manager's Name: Deborah Loon

Title: Executive Director

Organization: MN Valley Trust (Metro Big Rivers)

Address: 3815 East American Boulevard

City: Bloomington, MN 55425

Email: dloon@mnvalleytrust.org

Office Number: 612-801-1935

Mobile Number: 612-801-1935

Fax Number:

Website: www.mnvalleytrust.org

Location Information

County Location(s): Dakota, Carver, Ramsey, Scott, Wright, Isanti and Sherburne.

Eco regions in which work will take place:

- Metro / Urban

Activity types:

- Protect in Easement

- Protect in Fee
- Restore
- Enhance

Priority resources addressed by activity:

- Wetlands
- Prairie
- Forest
- Habitat

Narrative

Summary of Accomplishments

The Metro Big Rivers (MBR) Partnership successfully completed its work under the Phase 6 / ML2015 OHF appropriation, protecting 485 acres across 5 projects (198% of proposed) and restoring and enhancing a total of 1,055 acres (185% of proposed). The Partnership expended 99% of the OHF funds granted awarded to it and leveraged the grant by 57% with nearly \$1,141,000 in other funds.

Process & Methods

Brief summaries of the work completed under this Metro Big Rivers Phase 6 grant are provided below. More in-depth information of projects completed is provided in project summary attachments to this final report.

Friends of the Mississippi River (FMR) completed its work under this grant, enhancing 365 acres within two DNR Scientific & Natural Area (SNA) units in the Twin Cities Metro area. Working with SNA staff, FMR enhanced 175 acres of forest and 40 acres of bluffland prairie at Pine Bend Bluffs SNA. At the Hastings Sand Coulee SNA, FMR enhanced 70 acres of forest and 80 acres of prairie. Forest acres were enhanced through invasive woody removal, including by both forestry mowing and cut-and-paint removal, with two years of follow-up treatments. Prairie acres – including 87 acres of native remnant prairie – were enhanced through a combination of activities including herbaceous and woody species removal, seeding, and prescribed burns. Volunteers participated in the enhancement through yearly invasive removal and seed collection events.

Great River Greening (GRG) completed its work under this grant, restoring and enhancing 95 acres of prairie and 110 acres of forest. Working with Scott County staff at Doyle-Kennefick Regional Park, GRG restored 88 acres of prairie from former agricultural land and enhanced 7 acres of oak savanna. At Victoria Park and Crosby Farm Regional Park, GRG worked with the City of St Paul to enhance 110 acres through prairie planting, tree planting, invasive species removal and shelter pocket clearing and planting.

Minnesota Land Trust (MLT) completed 3 conservation easements, protecting 318 acres of high quality habitat and 2.35 miles of shoreland. These included:

- 1) Hunter Lake (Jannusch) – protected 201 acres of hardwood forest, oak savanna, pothole wetlands, extensive lake shoreline, and a glacial esker in Sherburne County. The landowner generously donated the entire value of the conservation easement, which appraised at over \$380,000.
- 2) Medvecky Woods (DeCorsey) – protected 40 acres of hardwood forest and wetlands in a Minnesota Biological Survey-designated site of Outstanding Biodiversity Significance in Isanti County. The property is contiguous with another MLT easement and nearby the 5,700-acre Cedar Creek Ecosystem Science Reserve.
- 3) Tennyson Lake (Barrett 2) – protected 77 acres of habitat on Tennyson Lake in Isanti County, a favorite stopover of trumpeter swans and migratory bird species. The easement adds on to 80 acres of existing protected property directly to the north at the inflow of the lake.

Funds remaining after completing protection work allowed MLT to work with the Minnesota Valley Trust (MVT) and the U.S. Fish and Wildlife Service (USFWS) to complete an oak savanna restoration on the Rapids Lake Unit of the Minnesota Valley National Wildlife Refuge in Carver County. This spectacular project is part of a large complex of public lands with a rich multitude of habitats overlooking the Minnesota River Valley.

Minnesota Valley Trust (MVT) completed its work under this grant as of September 2018 when it protected through fee title acquisition 51 acres of a high-priority 77-acre parcel for the Rapids Lake Unit of the Minnesota Valley National Wildlife Refuge. The balance of the site was acquired with half of the MBR 7 / ML 2016 grant and \$794,462 in other, private funds.

After acquisition, MVT used the balance of its MBR 7 / ML 2016 grant to complete the initial habitat restoration over 40 acres, which included converting the building site and crop field to prairie and wetland. Simultaneously, the MN Land Trust conducted initial restoration of 23 acres of degraded oak savanna on the site with the balance of its MBR 6 / ML 2015. Follow-up treatments to maintain and enhance the restored 77 acres will be completed by MVT and USFWS under the MBR 9 / ML2019 grant.

The Trust for Public Land (TPL) acquired 116 acres of land which was added to the existing Grass Lake Wildlife Management Area in Wright County. The land contains wetlands, rolling hills and forested areas, and approximately 37 acres of agricultural land that were restored to tallgrass prairie through this grant. Acquisition was the first step in the restoration of a drained wetland, helping to improve water quality and provide aquatic habitat, while also protecting a portion of Grass Lake, an identified shallow lake. Additionally, the acquisition connected separate WMA parcels and increased the size of the existing WMA by 25 percent to over 450 acres. Within a 45-minute drive of over half the State's population, Grass Lake WMA provides numerous outdoor recreation and wildlife observation opportunities to the general public in the Metro Area.

How did the program address habitats of significant value for wildlife species of greatest conservation need, threatened or endangered species, and/or list targeted species?

Metro Big Rivers Partnership projects improved habitat values for wildlife and Species in Greatest Conservation Need (SGCN), including birds using the Mississippi River migratory corridor, pollinators, wildlife, and an array of rare and endangered species.

The restoration/enhancement partners (FMR and GRG) worked on already-protected conservation lands to significantly improve habitat values for wildlife and SGCN. Work restored restore prairie and enhance forest, oak savanna and prairie at four conservation sites.

The easement partner (MLT) permanently limited development and prevented fragmentation of wildlife habitats and undeveloped shoreline. Restricting shoreline development prevented negative impacts to terrestrial and aquatic habitats that support a number of fish and wildlife species, especially SGCN.

The fee title partners (MVT and TPL) acquired lands prioritized through federal, state, regional and local natural resource plans due to their high biodiversity, connectivity, and ability to preserve habitat for SGCN. The acquisitions and subsequent habitat restoration and enhancement work increased breeding and migratory habitat for waterfowl, shorebirds, neo-tropical migrants, and non-migratory resident species, protected the diversity of native ecosystems, and improved connectivity and resilience.

How did the program use science-based targeting that leveraged or expanded corridors and complexes, reduced fragmentation, or protected areas in the MN County Biological Survey.

Restoration and enhancement partners Friends of the Mississippi River and Great River Greening used science-based criteria to prioritize activities. This included consideration of the highest quality natural areas (as determined by MBS), as well as prioritization of work within important ecological corridors identified by a coalition of conservation partners and based on rare species and sensitive landscape features. This prioritization ensures that projects reduce fragmentation and link natural areas within already-established corridors. All of the restoration and enhancement sites are located along or near the three big rivers and important tributaries – some of the most important ecological corridors for migrating and sedentary plant and animal life.

Minnesota Land Trust used a set of ecological criteria, informed by project cost, to prioritize conservation easement projects with the highest available cost: benefit ratio. Scoring of ecological value closely aligned with and was informed by presence of document SGCN, T&E species, high-quality habitats, and location relative to priority areas identified within the State Wildlife Action Plan and other sources.

The Minnesota Valley Trust and Trust for Public Land prioritized work through science-based processes led by the public entities that will own interest in the properties (e.g., MN DNR, USFWS). Plans followed include Minnesota Biological Survey, RESA, Metropolitan Conservation Corridors, Minnesota State Wildlife Action Plan, and the Comprehensive Conservation Plan for the Minnesota Valley National Wildlife Refuge. Both fee title acquisitions completed under this phase expanded priority habitat complexes and conservation corridors.

Explain Partners, Supporters, & Opposition

Metro Big Rivers Partnership projects were designed and completed thanks to an extensive network of partners and supporters. Projects funded through this phase faced no opposition.

Partners on FMR and GRG projects included local units of government, citizen groups and volunteers. FMR also partnered with Hastings High School and University of Minnesota classes to conduct volunteer programming at Hastings Sand Coulee SNA.

MLT worked with private landowners to protect three important projects with perpetual conservation easements. Moreover, MLT will safeguard these resources through time in partnership with the landowners.

MLT and MVT worked with the U.S. Fish and Wildlife Service to complete restoration and enhancement on the recently-acquired parcel for the Minnesota Valley National Wildlife Refuge.

MVT and TPL worked with MN DNR and USFWS to identify and conclude protection projects. The two protected sites have strong public support and are popular destinations for outdoor recreation, including hunting.

Exceptional challenges, expectations, failures, opportunities, or unique aspects of program

Partners experienced no exceptional challenges.

FMR's work at two SNAs was guided by natural resource management plans. Unique to these projects was the ability to engage the public to interact with both FMR staff and DNR ecologists at yearly public volunteer events, raising the profile of the work DNR is doing through its SNA program and strengthening this long term partnership.

After MVT completed the acquisition, MVT and MLT teamed up on the restoration and enhancement of the 77-acre addition to the Rapids Lake Unit of the Minnesota Valley National Wildlife Refuge. The partners used funds from

both the Metro Big Rivers 6 and 7 grants (ML2015 and ML2016).

Tree plantings in the Mississippi River floodplain at Crosby orchestrated by GRG struggled to establish after 3 consecutive years of extended off-season flooding. This was offset with multiple tree plantings to combat the mortality associated these extended, off-season flooding events.

What other dedicated funds may collaborate with or contribute to this program?

- N/A

What is the plan to sustain and/or maintain this work after the Outdoor Heritage Funds are expended?

All public partners committed to maintaining the restoration / enhancement habitat improvements.

FMR and GRG will support efforts to raise public and private sources to continue the work beyond this grant and will work cooperatively with partners to ensure the project benefits are maintained. All public partners committed to maintaining the restoration / enhancement habitat improvements. FMR also continues to bring stewardship funding to these sites and to host yearly volunteer events.

Land protected by MLT through conservation easements will be sustained through state-of-the art easement stewardship standards and practices. The Land Trust is nationally accredited, with a successful easement stewardship program that includes annual property monitoring and legal defense as necessary. In addition, MLT completed habitat management plans for each of the three protected properties and will work to incentivize landowners to ecologically manage their properties over time in line with those plans.

Land acquired in fee by MVT for the Minnesota Valley National Wildlife Refuge will be sustained and maintained over the long term by the USFWS.

Land acquired in fee title by TPL was conveyed to the DNR for permanent stewardship as a WMA. Initial site development and restoration included tallgrass prairie restoration and woody invasive removal. WMAs are the backbone of DNR's wildlife management efforts in Minnesota; as such they are prioritized for management and sustained maintenance.

Actions to Maintain Project Outcomes

Year	Source of Funds	Step 1	Step 2	Step 3
Ongoing	FMR, GRG, Public Partners / Landowners	Monitor and assess the completed Restoration and Enhancement projects	Target actions to maintain habitat, engage partners and landowners	Take restorative action as needed to correct any damage
Ongoing	MLT Stewardship & Enforcement Fund	Annually monitor completed Easements	Conduct enforcement actions, as needed	-
Ongoing	MVT, TPL, Public Partners (DNR, USFWS)	Post property that has been protected through Fee Title Acquisition	Develop and implement habitat restoration and enhancement plans	Monitor and assess the property, identify and implement any needed actions to correct damage

Budget

Grand Totals Across All Partnerships

Item	Requested	AP Amount	Spent	Leverage	Received Leverage	Leverage Source	Original Total	Final Total
Personnel	\$178,100	\$195,800	\$188,600	\$97,900	\$198,800	Friends of Mississippi River, City of St. Paul, National Wild Turkey Federation, Great River Greening, Scott County	\$276,000	\$387,400
Contracts	\$475,700	\$510,600	\$505,800	-	-	-	\$475,700	\$505,800
Fee Acquisition w/ PILT	\$234,000	\$325,000	\$324,000	\$35,000	-	-, Private	\$269,000	\$324,000
Fee Acquisition w/o PILT	\$709,000	\$470,000	\$470,000	\$260,000	\$550,000	-, Minnesota Valley Trust, Private	\$969,000	\$1,020,000
Easement Acquisition	\$210,000	\$116,000	\$116,000	\$60,000	\$387,100	-, Landowner donation	\$270,000	\$503,100
Easement Stewardship	\$60,000	\$60,000	\$60,000	-	-	-	\$60,000	\$60,000
Travel	\$7,000	\$7,800	\$7,700	-	-	-	\$7,000	\$7,700
Professional Services	\$59,000	\$17,000	\$17,000	-	-	-	\$59,000	\$17,000
Direct Support Services	\$10,000	\$10,000	\$10,000	-	-	-	\$10,000	\$10,000
DNR Land Acquisition Costs	\$7,000	\$5,000	\$5,000	-	-	-	\$7,000	\$5,000
Capital Equipment	-	-	-	-	-	-	-	-
Other Equipment/Tools	\$3,000	\$3,000	\$3,000	-	-	-	\$3,000	\$3,000
Supplies/Materials	\$47,200	\$129,800	\$129,600	-	\$5,000	-, Private Foundation Grant	\$47,200	\$134,600
DNR IDP	-	\$150,000	\$150,000	-	-	-	-	\$150,000
Grand Total	\$2,000,000	\$2,000,000	\$1,986,700	\$452,900	\$1,140,900	-	\$2,452,900	\$3,127,600

Partner: Friends of Mississippi River

Totals

Item	Requested	AP Amount	Spent	Leverage	Received Leverage	Leverage Source	Original Total	Final Total
Personnel	\$38,100	\$38,100	\$35,800	\$22,900	\$27,200	Friends of Mississippi River	\$61,000	\$63,000
Contracts	\$235,700	\$235,700	\$234,900	-	-	-	\$235,700	\$234,900
Fee Acquisition w/ PILT	-	-	-	-	-	-	-	-
Fee Acquisition w/o PILT	-	-	-	-	-	-	-	-
Easement Acquisition	-	-	-	-	-	-	-	-
Easement Stewardship	-	-	-	-	-	-	-	-
Travel	\$1,000	\$1,000	\$1,100	-	-	-	\$1,000	\$1,100
Professional Services	-	-	-	-	-	-	-	-
Direct Support Services	-	-	-	-	-	-	-	-
DNR Land Acquisition Costs	-	-	-	-	-	-	-	-
Capital Equipment	-	-	-	-	-	-	-	-
Other Equipment/Tools	-	-	-	-	-	-	-	-
Supplies/Materials	\$200	\$200	-	-	-	-	\$200	-
DNR IDP	-	-	-	-	-	-	-	-
Grand Total	\$275,000	\$275,000	\$271,800	\$22,900	\$27,200	-	\$297,900	\$299,000

Personnel

Position	Annual FTE	Years Working	Funding Request	Leverage	Leverage Source	Total
FMR Personnel	0.57	3.0	\$35,800	\$27,200	Friends of Mississippi River	\$63,000

Partner: Minnesota Land Trust

Totals

Item	Requested	AP Amount	Spent	Leverage	Received Leverage	Leverage Source	Original Total	Final Total
Personnel	\$44,000	\$42,500	\$38,000	-	-	-	\$44,000	\$38,000
Contracts	-	\$138,200	\$134,500	-	-	-	-	\$134,500
Fee Acquisition w/ PILT	-	-	-	-	-	-	-	-
Fee Acquisition w/o PILT	-	-	-	-	-	-	-	-
Easement Acquisition	\$210,000	\$116,000	\$116,000	\$60,000	\$387,100	Landowner donation	\$270,000	\$503,100
Easement Stewardship	\$60,000	\$60,000	\$60,000	-	-	-	\$60,000	\$60,000
Travel	\$2,000	\$1,300	\$1,100	-	-	-	\$2,000	\$1,100
Professional Services	\$59,000	\$17,000	\$17,000	-	-	-	\$59,000	\$17,000
Direct Support Services	-	-	-	-	-	-	-	-
DNR Land Acquisition Costs	-	-	-	-	-	-	-	-
Capital Equipment	-	-	-	-	-	-	-	-
Other Equipment/Tools	-	-	-	-	-	-	-	-
Supplies/Materials	-	-	-	-	-	-	-	-
DNR IDP	-	-	-	-	-	-	-	-
Grand Total	\$375,000	\$375,000	\$366,600	\$60,000	\$387,100	-	\$435,000	\$753,700

Personnel

Position	Annual FTE	Years Working	Funding Request	Leverage	Leverage Source	Total
MLT Personnel	0.08	5.0	\$38,000	-	-	\$38,000

Partner: Great River Greening

Totals

Item	Requested	AP Amount	Spent	Leverage	Received Leverage	Leverage Source	Original Total	Final Total
Personnel	\$96,000	\$115,200	\$114,800	\$75,000	\$171,600	City of St. Paul, National Wild Turkey Federation, Great River Greening, Scott County	\$171,000	\$286,400
Contracts	\$240,000	\$136,700	\$136,400	-	-	-	\$240,000	\$136,400
Fee Acquisition w/ PILT	-	-	-	-	-	-	-	-
Fee Acquisition w/o PILT	-	-	-	-	-	-	-	-
Easement Acquisition	-	-	-	-	-	-	-	-
Easement Stewardship	-	-	-	-	-	-	-	-
Travel	\$4,000	\$5,500	\$5,500	-	-	-	\$4,000	\$5,500
Professional Services	-	-	-	-	-	-	-	-
Direct Support Services	\$10,000	\$10,000	\$10,000	-	-	-	\$10,000	\$10,000
DNR Land Acquisition Costs	-	-	-	-	-	-	-	-
Capital Equipment	-	-	-	-	-	-	-	-
Other Equipment/Tools	\$3,000	\$3,000	\$3,000	-	-	-	\$3,000	\$3,000
Supplies/Materials	\$47,000	\$129,600	\$129,600	-	\$5,000	Private Foundation Grant	\$47,000	\$134,600
DNR IDP	-	-	-	-	-	-	-	-
Grand Total	\$400,000	\$400,000	\$399,300	\$75,000	\$176,600	-	\$475,000	\$575,900

Personnel

Position	Annual FTE	Years Working	Funding Request	Leverage	Leverage Source	Total
GRG Personnel	0.73	3.0	\$114,800	\$171,600	City of St. Paul, National Wild Turkey Federation, Great River Greening, Scott County	\$286,400

Partner: Minnesota Valley Trust

Totals

Item	Requested	AP Amount	Spent	Leverage	Received Leverage	Leverage Source	Original Total	Final Total
Personnel	-	-	-	-	-	-	-	-
Contracts	-	-	-	-	-	-	-	-
Fee Acquisition w/ PILT	-	-	-	-	-	-	-	-
Fee Acquisition w/o PILT	\$475,000	\$470,000	\$470,000	\$225,000	\$550,000	Minnesota Valley Trust	\$700,000	\$1,020,000
Easement Acquisition	-	-	-	-	-	-	-	-
Easement Stewardship	-	-	-	-	-	-	-	-
Travel	-	-	-	-	-	-	-	-
Professional Services	-	-	-	-	-	-	-	-
Direct Support Services	-	-	-	-	-	-	-	-
DNR Land Acquisition Costs	-	\$5,000	\$5,000	-	-	-	-	\$5,000
Capital Equipment	-	-	-	-	-	-	-	-
Other Equipment/Tools	-	-	-	-	-	-	-	-
Supplies/Materials	-	-	-	-	-	-	-	-
DNR IDP	-	-	-	-	-	-	-	-
Grand Total	\$475,000	\$475,000	\$475,000	\$225,000	\$550,000	-	\$700,000	\$1,025,000

Partner: Trust for Public Land

Totals

Item	Requested	AP Amount	Spent	Leverage	Received Leverage	Leverage Source	Original Total	Final Total
Personnel	-	-	-	-	-	-	-	-
Contracts	-	-	-	-	-	-	-	-
Fee Acquisition w/ PILT	\$234,000	\$325,000	\$324,000	\$35,000	-	Private	\$269,000	\$324,000
Fee Acquisition w/o PILT	\$234,000	-	-	\$35,000	-	Private	\$269,000	-
Easement Acquisition	-	-	-	-	-	-	-	-
Easement Stewardship	-	-	-	-	-	-	-	-
Travel	-	-	-	-	-	-	-	-
Professional Services	-	-	-	-	-	-	-	-
Direct Support Services	-	-	-	-	-	-	-	-
DNR Land Acquisition Costs	\$7,000	-	-	-	-	-	\$7,000	-
Capital Equipment	-	-	-	-	-	-	-	-
Other Equipment/Tools	-	-	-	-	-	-	-	-
Supplies/Materials	-	-	-	-	-	-	-	-
DNR IDP	-	\$150,000	\$150,000	-	-	-	-	\$150,000
Grand Total	\$475,000	\$475,000	\$474,000	\$70,000	-	-	\$545,000	\$474,000

Direct Support Services

How did you determine which portions of the Direct Support Services of your shared support services is direct to this program?

GRG - Calculates support services as a percent of direct expenses and estimates that 8% of direct expenses were required for this grant.

Explain any budget challenges or successes:

No budget challenges were encountered by any Metro Big Rivers partners in completing these projects. Metro Big Rivers partners were able to stretch the OHF grant funds to achieve greater outcomes than originally anticipated, as well as bring significantly more leverage to projects than anticipated.

Total Revenue: \$0

Revenue Spent: \$0

Revenue Balance: \$0

Of the money disclosed above, what are the appropriate uses of the money:

- E. This is not applicable as there was no revenue generated.

Output Tables

Acres by Resource Type (Table 1)

Type	Wetland (AP)	Wetland (Final)	Prairie (AP)	Prairie (Final)	Forest (AP)	Forest (Final)	Habitat (AP)	Habitat (Final)	Total Acres (AP)	Total Acres (Final)
Restore	0	0	81	88	0	0	0	0	81	88
Protect in Fee with State PILT Liability	5	66	5	40	9	10	6	0	25	116
Protect in Fee w/o State PILT Liability	40	3	30	48	44	0	6	0	120	51
Protect in Easement	35	0	30	0	35	318	0	0	100	318
Enhance	0	0	134	150	355	355	0	0	489	505
Total	80	69	280	326	443	683	12	0	815	1,078

How many of these Prairie acres are Native Prairie? (Table 1b)

Type	Native Prairie (AP)	Native Prairie (Final)
Restore	0	0
Protect in Fee with State PILT Liability	0	0
Protect in Fee w/o State PILT Liability	0	1
Protect in Easement	0	0
Enhance	87	110
Total	87	111

Total Requested Funding by Resource Type (Table 2)

Type	Wetland (AP)	Wetland (Final)	Prairie (AP)	Prairie (Final)	Forest (AP)	Forest (Final)	Habitat (AP)	Habitat (Final)	Total Funding (AP)	Total Funding (Final)
Restore	-	-	\$123,000	\$115,400	-	-	-	-	\$123,000	\$115,400
Protect in Fee with State PILT Liability	\$37,500	\$269,700	\$50,000	\$163,500	\$90,000	\$40,800	\$60,000	-	\$237,500	\$474,000
Protect in Fee w/o State PILT Liability	\$212,500	\$27,900	\$175,000	\$447,100	\$265,000	-	\$60,000	-	\$712,500	\$475,000
Protect in Easement	\$131,300	-	\$112,500	-	\$131,200	\$235,200	-	-	\$375,000	\$235,200
Enhance	-	-	\$130,000	\$270,400	\$422,000	\$416,700	-	-	\$552,000	\$687,100
Total	\$381,300	\$297,600	\$590,500	\$996,400	\$908,200	\$692,700	\$120,000	-	\$2,000,000	\$1,986,700

Acres within each Ecological Section (Table 3)

Type	Metro / Urban (AP)	Metro / Urban (Final)	Forest / Prairie (AP)	Forest / Prairie (Final)	SE Forest (AP)	SE Forest (Final)	Prairie (AP)	Prairie (Final)	N. Forest (AP)	N. Forest (Final)	Total (AP)	Total (Final)
Restore	81	88	0	0	0	0	0	0	0	0	81	88
Protect in Fee with State PILT Liability	25	116	0	0	0	0	0	0	0	0	25	116
Protect in	120	51	0	0	0	0	0	0	0	0	120	51

Fee w/o State PILT Liability												
Protect in Easement	100	318	0	0	0	0	0	0	0	0	100	318
Enhance	489	505	0	0	0	0	0	0	0	0	489	505
Total	815	1,078	0	0	0	0	0	0	0	0	815	1,078

Total Requested Funding within each Ecological Section (Table 4)

Type	Metro/ Urban (AP)	Metro/ Urban (Final)	Forest / Prairie (AP)	Forest / Prairie (Final)	SE Fores t (AP)	SE Forest (Final)	Prairie (AP)	Prairie (Final)	N. Fores t (AP)	N. Forest (Final)	Total (AP)	Total (Final)
Restore	\$123,000	\$115,400	-	-	-	-	-	-	-	-	\$123,000	\$115,400
Protect in Fee with State PILT Liability	\$237,500	\$474,000	-	-	-	-	-	-	-	-	\$237,500	\$474,000
Protect in Fee w/o State PILT Liability	\$712,500	\$475,000	-	-	-	-	-	-	-	-	\$712,500	\$475,000
Protect in Easemen t	\$375,000	\$235,200	-	-	-	-	-	-	-	-	\$375,000	\$235,200
Enhance	\$552,000	\$687,100	-	-	-	-	-	-	-	-	\$552,000	\$687,100
Total	\$2,000,000	\$1,986,700	-	-	-	-	-	-	-	-	\$2,000,000	\$1,986,700

Target Lake/Stream/River Feet or Miles

2.78 miles

Outcomes

Programs in metropolitan urbanizing region:

- A network of natural land and riparian habitats will connect corridors for wildlife and species in greatest conservation need ~ *Two examples illustrate how this work is measured and evaluated:*

1. *TPL's acquisition of a 116-acre addition to Grass Lake WMA coupled with a 37-acre restoration of prairie and wetland habitat linked two disjunct pieces of the WMA, building a connected block of habitat for wildlife and SGCN.*

2. *MLT's purchase of a conservation easement over the Medvecky Woods (DeCoresey) property added 40 acres to a protected habitat complex connecting another MLT Medvecky Woods property protected through conservation easement to the approximately 5,400-acre Cedar Creek Ecosystem Science Reserve protected and managed by the University of Minnesota.*

Parcels

Sign-up Criteria?

No

Restore / Enhance Parcels

Name	County	TRDS	Acres	Est Cost	Existing Protection
FMR - Hastings Sand Coulee SNA	Dakota	02722227	223	\$100,000	Yes
FMR - Pine Bend Bluffs SNA	Dakota	11417202	225	\$171,800	Yes
GRG - Victoria Park / Crosby Farm Regional Park	Ramsey	02823214	110	\$247,000	Yes
GRG - Doyle Kennefik Regional Park	Scott	11322211	95	\$153,000	Yes

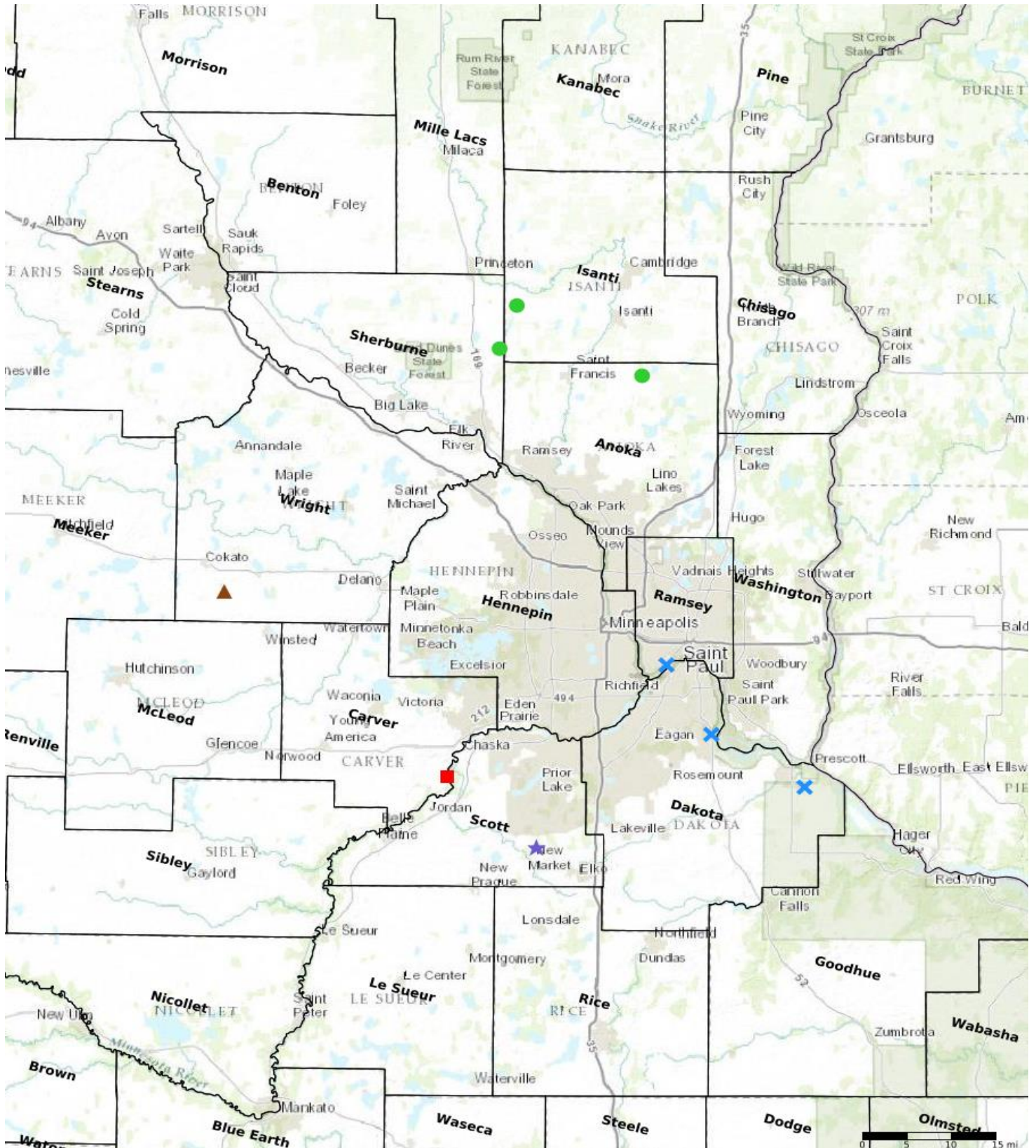
Protect Parcels

Name	County	TRDS	Acres	Est Cost	Existing Protection
MLT - Medveckey Woods (DeCorsey)	Isanti	03423234	40	\$20,000	No
MLT - Tennyson Lake (Barrett 2)	Isanti	03525220	77	\$96,000	No
MLT - Hunter Lake (Jannusch)	Sherburne	03426213	201	\$0	No
TPL - Grass Lake WMA Addition	Wright	11828213	116	\$324,000	No

Protect Parcels with Buildings

Name	County	TRDS	Acres	Est Cost	Existing Protection	Buildings	Value of Buildings
MVT - Rapids Lake Unit Addition, MN Valley National Wildlife Refuge	Carver	11523231	51	\$1,025,000	No	6	\$370,000

Parcel Map



- Protect in Easement
- ▲ Protect in Fee with PILT
- Protect in Fee W/O PILT
- ★ Restore
- ✕ Enhance
- ⊕ Other