

# **Lessard-Sams Outdoor Heritage Council (LSOHC)**

## **FY2011 Outdoor Heritage Fund Recommended Appropriations**

### **Quick Facts and Information**

*Outdoor Heritage Fund's constitutional mission is to "... restore, protect, and enhance Minnesota's wetlands, prairies, forests, and habitat for fish, game, and wildlife. . . "*

#### **Snapshot of Recommended Appropriations**

- 25 programs/projects recommended totaling \$58.939 million
- \$4.386 million recommended for statutorily mandated Conservation Partners Grant Program
- Approximately 5% set aside as a reserve to manage cash flow and forecast error

#### **Conservation Outcomes**

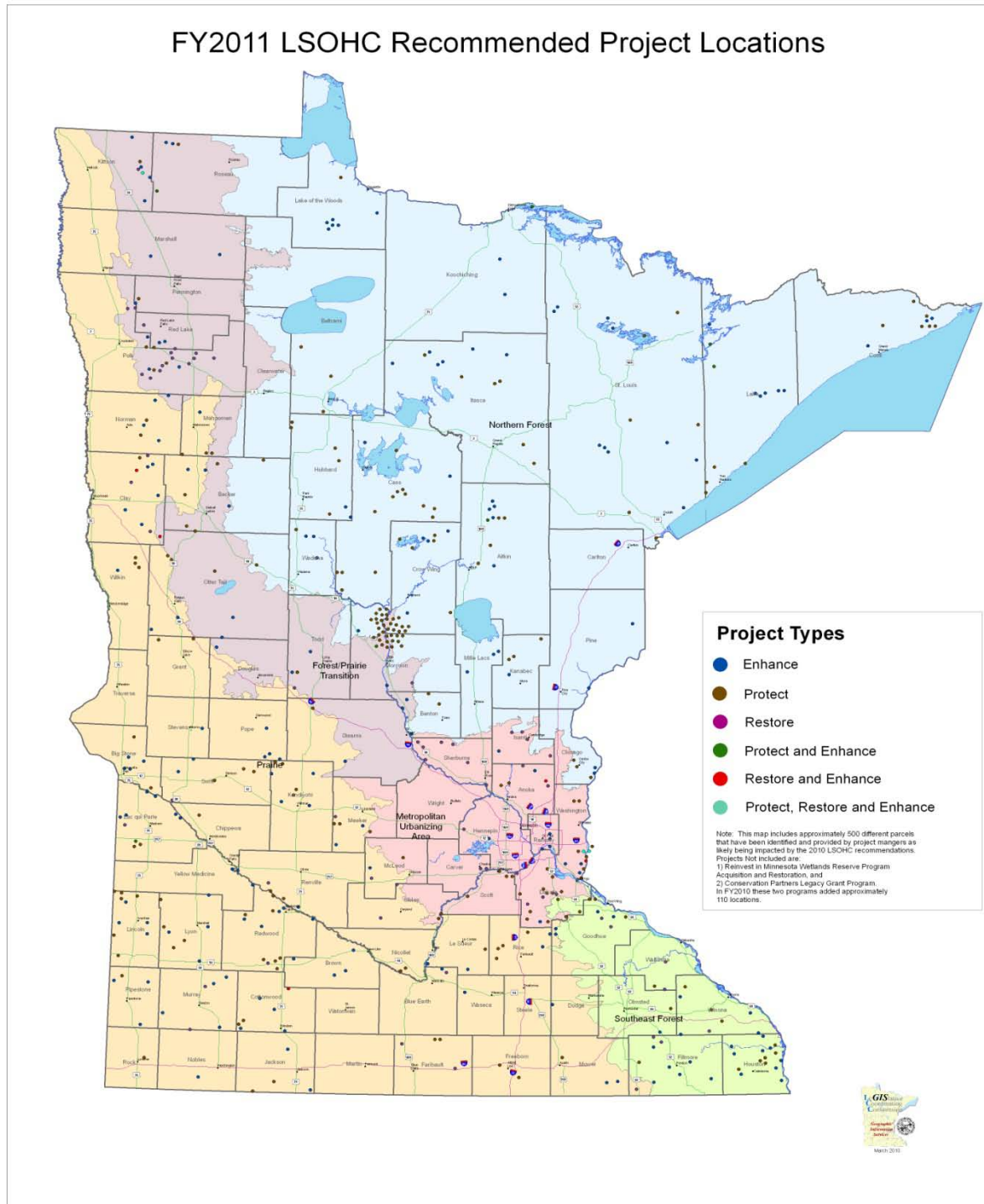
- 16,471 acres protected: 7,715 easement and 8,756 fee acquisition
- 42,635 acres enhanced
- 4,709 acres restored
- \$1 LSOHC dollars leveraged \$0.63 in matching funds
- Projects located in 82 of the 87 Minnesota counties
- Metro urban area represents 5% of undeveloped state land and will receive 20% of the recommended dollars

#### **The Council Process**

- Developed and widely distributed request for proposals that specified 16 minimum criteria; 6 priority criteria; focus on 5 ecological sections, build conservation capacity, and encouraged collaborative proposals.
- Investigated each section's priority policies, met with local conservation experts in each ecological area, held public meetings in each of the 5 areas and completed a field review of issues and related priority actions and investment needs
- Asked local conservationists to articulate the highest priority actions and total investment needs by forest, wetland, prairie, and habitat areas in the action areas of protect, enhance and restore
- Solicited public input through website and Council meetings
- LSOHC reviewed local conservationist information and developed one statewide set of priorities and five ecological section visions and sets of priorities
- Reviewed 42 proposals requesting more than \$185.5 million in OHF requests
- Each of the 26 of the highest scoring programs presented a 30 minute formal presentation with Q and A
- LSOHC members independently ranked project requests and collectively agreed on FY 2011 funding recommendations

# LSOHC Project Distribution Map

## Projects located in 82 of the 87 Counties



Note: Projects Not Included are: 1) Reinvest in Minnesota Wetlands Reserve Program Acquisition and Restoration, and 2) Conservation Partners Legacy Grant Program. This map includes approximately 500 different parcels that have been identified by project managers as likely being impacted by the 2010 LSOHC recommendations. On a map of this scale, some of the dots will be overlapping.

## FY2011 LSOHC Recommended Programs for Funding

Subd #	Project Title	Recipient	Original Request	Council Recommendation
2(a)	Accelerated Prairie Grassland Restoration and Enhancement Program on DNR lands	DNR	\$12,603,000	\$ 5,833,000
2(b)	The Green Corridor Legacy Program	Redwood Area Communities Foundation (RACF)	\$4,165,835	\$ 1,651,000
2(c)	Prairie Heritage Fund – Acquisition and Restoration	Pheasants Forever	\$4,000,000	\$ 3,015,000
2(d)	Northern Tallgrass Prairie NWR Protection	The Nature Conservancy	\$3,500,000	\$ 2,041,000
2(e)	Rum River-Cedar Creek Initiative	Anoka County	\$1,900,000	\$ 1,900,000
2(f)	Minnesota Prairie Recovery Project	The Nature Conservancy	\$6,286,298	\$ 3,653,000
3(a)	Critical Shoreline Habitat Protection Program	MN Land Trust	\$1,200,000	\$ 816,000
3(b)	Protect Key Industrial Forest Land Tracts in Central Minnesota	Cass County	\$1,000,000	\$ 594,000
3(c)	Little Nokasippi River Wildlife Management Area	DNR/BWSR	\$1,225,000	\$ 843,000
3(d)	Accelerated Forest Wildlife Habitat Program	DNR	\$17,523,000	\$ 1,791,000
3(e)	Northeastern Minnesota Sharp-tailed Grouse Habitat	Minnesota Sharp-tailed Grouse Society	\$3,759,400	\$ 1,559,000
4(a)	Accelerated Shallow Lakes and Wetlands Enhancement, Restoration, and Protection Program	DNR - Fisheries & Wildlife and Ducks Unlimited	\$7,841,000	\$ 6,505,000
4(b)	Accelerating the Waterfowl Production Area Program in Minnesota:	US Fish and Wildlife Service	\$6,865,000	\$ 3,505,000
4(c)	Reinvest in Minnesota Wetlands Reserve Program Acquisition and Restoration	BWSR	\$18,000,000	\$ 6,895,000
5(a)	Metro Big Rivers Habitat Program	Minnesota National Wildlife Refuge Trust, Inc.	\$4,490,733	\$ 2,397,000
5(b)	Accelerated Aquatic Management Area Acquisition	DNR	\$17,158,000	\$ 3,416,000

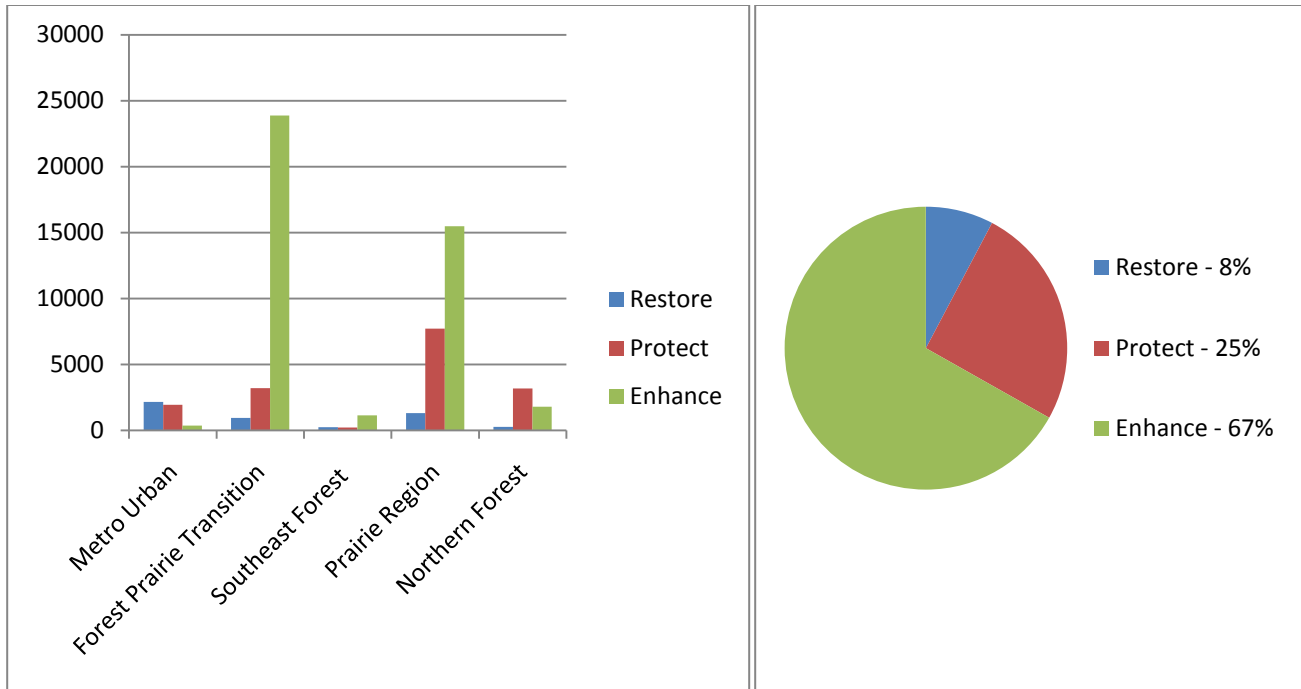
<b>Subd #</b>	<b>Project Title</b>	<b>Recipient</b>	<b>Original Request</b>	<b>Council Recommendation</b>
5(c)	Cold Water River and Stream Restoration, Protection and Enhancement	Minnesota Council of Trout Unlimited	\$1,397,000	\$ 1,269,000
5(d)	Dakota County Riparian and Lakeshore Protection and Restoration	Dakota County	\$6,500,000	\$ 2,097,000
5(e)	Valley Creek Protection Partnership	Minnesota Land Trust	\$2,530,000	\$ 1,218,000
5(f)	Anoka Sand Plain Restoration and Enhancement	Great River Greening	\$1,425,563	\$ 747,000
5(g)	Lower Mississippi River Habitat Restoration Acceleration	DNR	\$5,528,000	\$ 1,000,000
5(h)	Washington County St. Croix River Land Protection	Washington County	\$4,000,000	\$ 1,033,000
5(i)	Conservation Partners Legacy Grant Program	DNR	\$4,615,000	\$ 4,386,000
6(a)	Contract Management	DNR		\$ 175,000
6(b)	Legislative Coordinating Commission	LCC		\$ 600,000
<b>FY2011 Total OHF Appropriation Bill</b>				<b>\$ 58,939,000</b>

Second Year of Forest Legacy FY2010 Appropriation, 2009 Session Law	\$ 18,000,000
Reserve for cash flow and forecast error	\$ 4,186,000
MMB Estimate for OHF in FY2011	\$ 81,125,000

# Summary Information from Outdoor Heritage Fund Recommendations

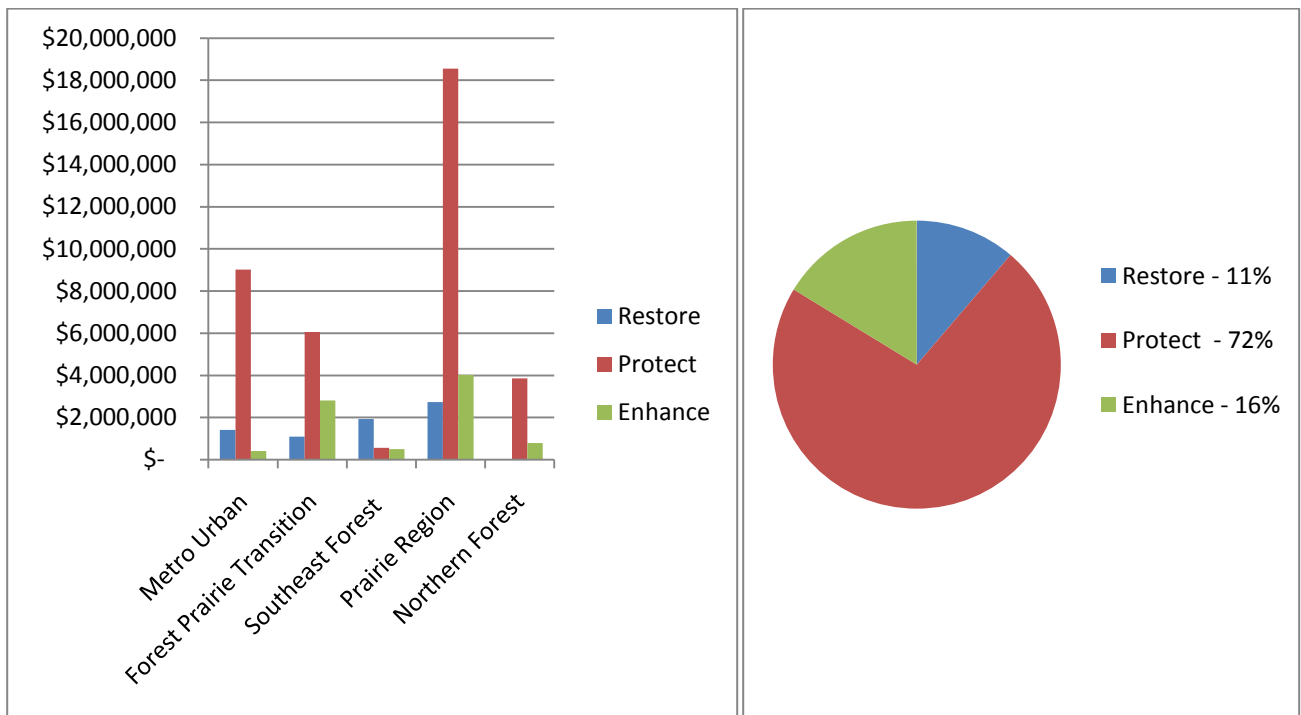
**Acres per Ecological Area**

**Acres affected as total of Recommendation**



**Funding per Ecological Area**

**Dollars as total of Recommendation**

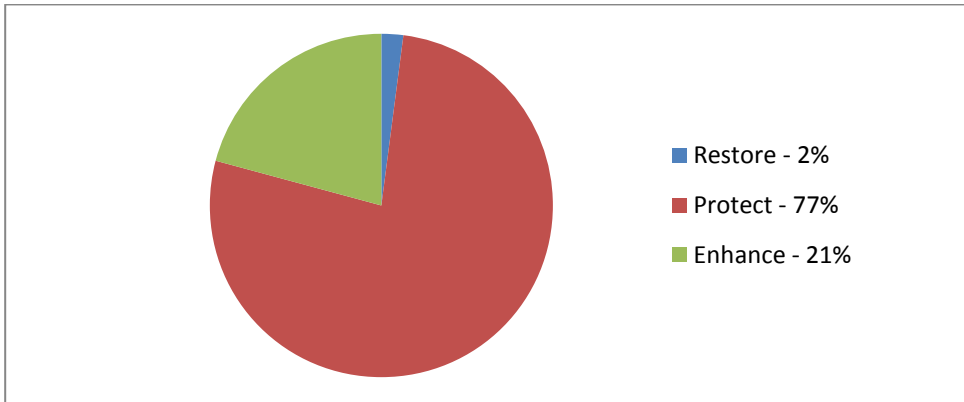


## Leverage

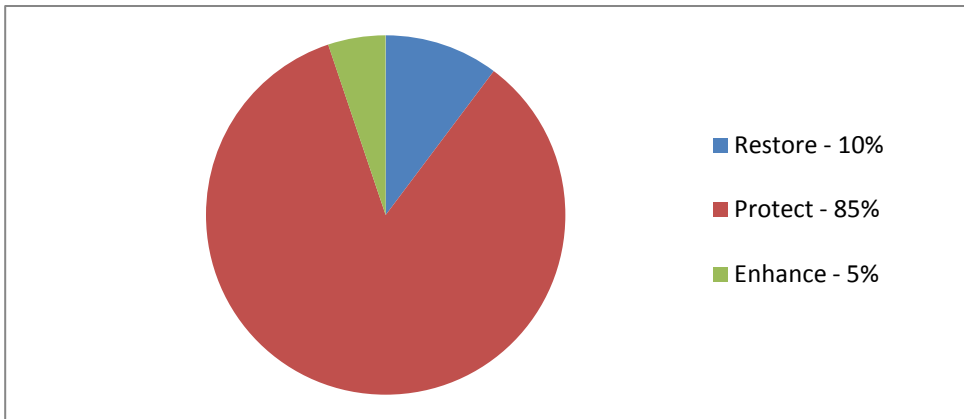
### *\$1 of OHF leverages more than \$0.63 of state & non-state funds*

The charts do not include the match that will be required for the FY11 awarded Conservation Partners Grants

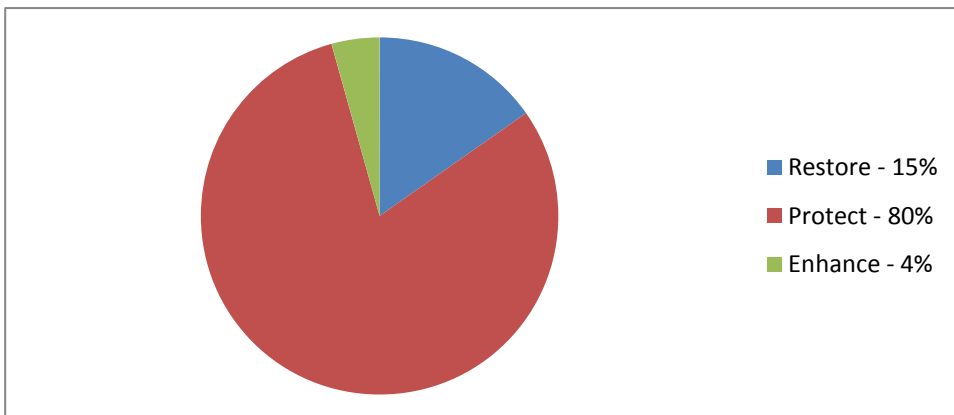
#### **\$ 2,895,413 Leveraged in State Funding Sources**



#### **\$ 32,720,074 Leveraged in Non-State Funding Sources (includes Federal)**

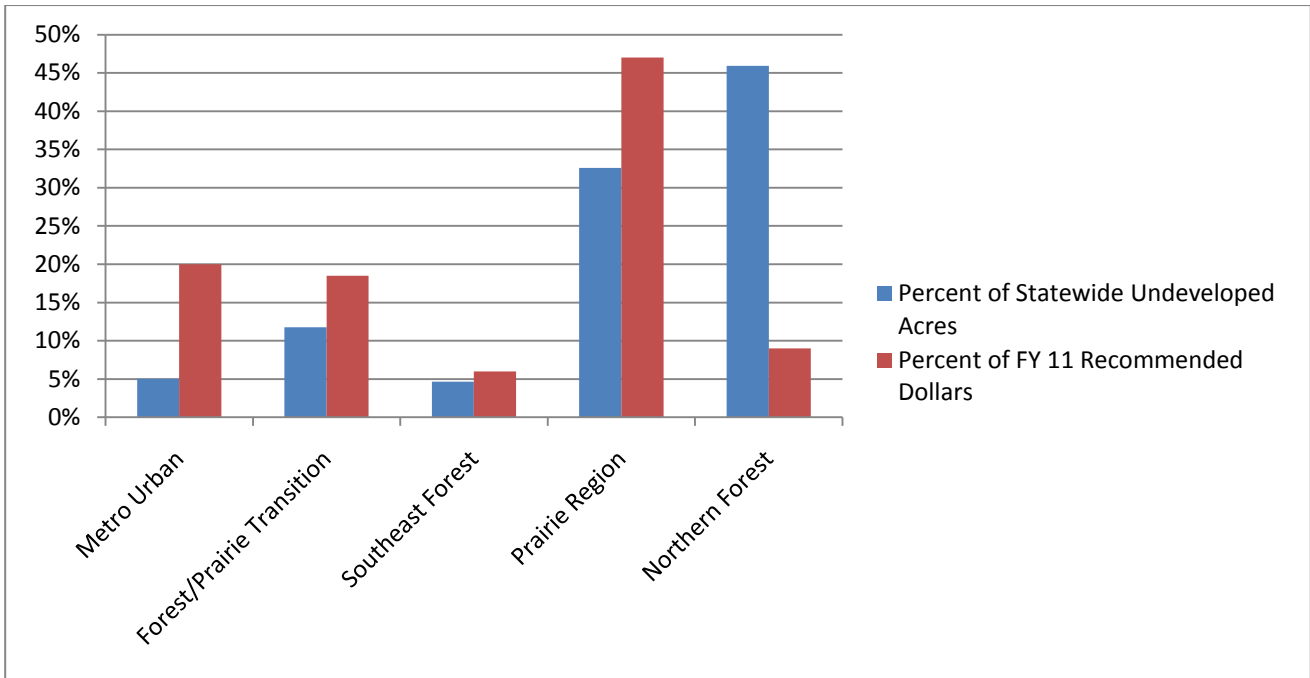


#### **\$ 29,070,380 Leveraged in Federal Funding Sources**

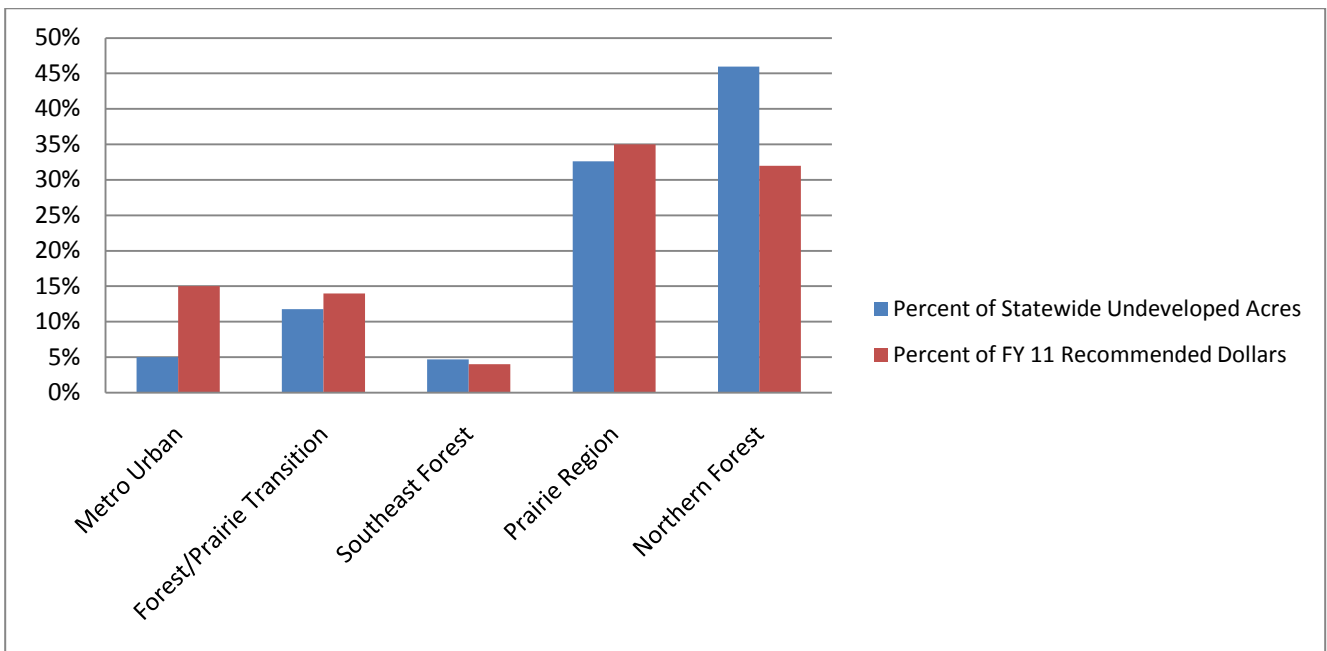


## Undeveloped Land by Region compared to FY11 Recommended Dollars

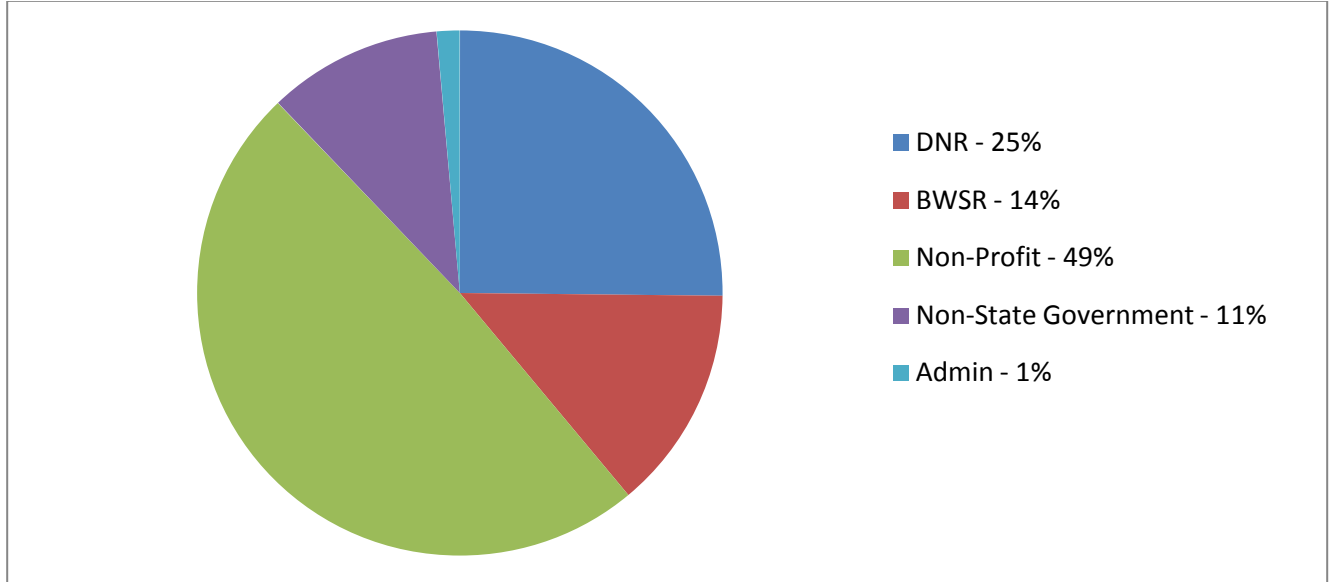
### Recommendations as presented in the FY2011 Appropriations Bill



Includes the second year, FY 2011 Forest Legacy appropriation (\$18 million) as appropriated in ML 2009, Chapter 172.



## Dollars Recommended by Organization Type



Note: This chart does not include the FY11 Conservation Partners Grants because it is undetermined as to division of those dollars. The FY10 Conservation Partners Grants were allocated as follows:

38% to Non-State Government (12 proposals totaling \$1,425,033)

62% to Non-Profit (23 proposal totaling \$2,314,967)

### For more information:

Lessard - Sams Outdoor Heritage Council  
100 Rev. Dr. Martin Luther King Jr. Blvd.  
State Office Building, Room 95  
St. Paul, MN 55155

Email: [Isohc@Isohc.leg.mn](mailto:Isohc@Isohc.leg.mn)

Phone: (651) 297-7141  
Fax: (651) 297-3697

### LSOHC Staff

**Bill Becker**, Executive Director  
[bill.becker@Isohc.leg.mn](mailto:bill.becker@Isohc.leg.mn)  
651-296-6397

**Heather Koop**, Project Analyst Manager  
[heather.koop@Isohc.leg.mn](mailto:heather.koop@Isohc.leg.mn)  
651-297-7142

**Sandy Smith**, Council Assistant  
[sandy.smith@Isohc.leg.mn](mailto:sandy.smith@Isohc.leg.mn)  
651-297-7141