

## Lessard-Sams Outdoor Heritage Council

**MEMO:**        **Agenda Item #7**

**DATE:**        April 28, 2017

**SUBJECT:**     Mississippi River Northwoods Trails and Potential Land Exchange

**PRESENTER:**   Mark Johnson, Executive Director  
                  Sarah Strommen, MNDNR

---

### **Suggested Motion:**

Motion by Councilmember X to:

Acknowledge receipt of the Crow Wing County (CWC) Board Resolution, dated February 14, 2017, establishing changes to the Mississippi River Northwoods (MRNW) trail designation and recreational uses and approve LSOHC staff to work with CWC and Minnesota Department of Natural Resources (MNDNR) on a potential land exchange between LSOHC and CWC specifically relating to approximately 134 acres currently part of the MRNW property along Highway 210 and other adjacent CWC owned lands. Final land exchange approval will be considered by the full LSOHC council and will follow all LSOHC statutory requirements.

### **Background:**

Recently CWC, MNDNR, ATVAM, and other local ATV groups worked together to develop a revised recreational trails plan for the MRNW project. In the spirit of working within the requirements of the Outdoor Heritage Fund and CWC needs, CWC formally adopted a revised plan at their February 14, 2017 county board meeting. That plan has been provided to LSOHC and is included in the agenda packet (attachment 7i). CWC would now like to renew discussions on and move forward with a potential land exchange.

### **Next Steps:**

LSOHC will consider a potential land swap with CWC as generically presented on attached maps (7j) and according to CWC final approved accomplishment plan (7k – page 3). LSOHC staff will work with CWC (and MNDNR as needed) to firm up the land swap details for presentation to and potential approval by the LSOHC at a future meeting.

### **Timeline and Supporting Documents:**

7a – March 16, 2016 – ***Proposed Trail Designation Application*** Summary – Draft CWC trail designation application for the MRNW property.

7b – April 8, 2016 – **Letter from LSOHC to CWC** – Provides written comment from LSOHC to CWC regarding proposed recreational trail designation on MRNW property during public review process related to proposed GIA application to MNDNR.

7c – June 9, 2016 – **Letter from DNR to CWC** – DNR expressed concerns on the possible trail designation on the MRNW projects and provided potential options to better align the MRNW property with the purposes of OHF.

7d – June 30, 2016 – **Letter from LSOHC to CWC** – Informs CWC of LSOHC to not move forward with land exchange proposal until proposed recreational trail plans and potential legal issues have been resolved.

7e – July 5, 2016 – **Letter from LSOHC to MNDNR** – Requests the DNR cease any further trail oriented grants or grant request activities related to MRNW property.

7f – November 1, 2016 – **Letter from LSOHC to MNDNR** – Requests MNDNR seek appropriate legal action against CWC on behalf of LSOHC.

7g – January 23, 2017 – **Letter from MNDNR to CWC** – Confirms understanding of potential CWC resolution pertaining to recreational trails compromise on the MRNW parcel following a December 15<sup>th</sup>, 2016 meeting with ATVAM, CWC, MNDNR, and local ATV groups.

7h – January 30, 2017 – **Letter from MNDNR to LSOHC** – MNDNR informs LSOHC that DNR’s General Counsel believes MNDNR does not have clear authority to initiate legal action on behalf of LSOHC.

7i – February 14, 2017 – **Signed CWC Resolution and CWC Board Packet** – Details the establishment of the MRNW property as “limited,” eliminates the “picnic area,” recognizes the “parking lot” in the GIA request is a logging landing area where parking can occur when not in use by forestry operations, and an attached trails map.

7j – Maps of MRNW potential land exchange

7k – March 6, 2015 – Approved Final Accomplishment Plan – Mississippi River Northwoods Habitat Complex Protection M.L. 2012, Ch. 264, Art. 1, Sec. 2, Subd. 3(b)

**Mississippi River Northwoods Trail  
PROPOSED TRAIL DESIGNATION APPLICATION SUMMARY**

**Township 46 Range 30 (Oak Lawn Township) sections 23, 24, 25, 26, 27, 34, & 35  
Township 45 Range 29 (Oak Lawn Township) section 3**

**Crow Wing County Land Services**

**March 16, 2016**

**Summary of Trail Proposal:**

On November 5<sup>th</sup>, 2014, the Cuyuna Iron Range Riders ATV Club submitted a "Recreation Trail Development and Improvement Request" to designate, as multiple use recreation trails, 11.5 miles of the existing 35 miles of forest trails within 2,000 acres of Crow Wing County managed public forestland commonly known as the Mississippi River Northwoods (MRNW) area. The proposed designation occurs on trails with existing motorized use and includes no plans to develop new trails, widen existing trails, or change existing uses. Historically, the MRNW area has been open to motorized use while providing recreational access for hunting and fishing as well many other uses for many years.

If approved by both Crow Wing County and the State of Minnesota, maintenance of this existing, but currently undesignated multiuse trail segment would be paid for through the MN DNR Off-Highway Vehicle (OHV) Grant-In-Aid (GIA) program and the Cuyuna Iron Range Riders ATV Club. One trail head parking area is proposed, located approximately 1/2 mile north of State Highway #210. The proposed designation would be open to motorized recreation use from May 1<sup>st</sup> thru October 31<sup>st</sup>. Consistent with state law, ATV use for purposes of big game hunting will be allowed, including off-trail riding for purposes of retrieving a deer or installing a portable deer stand.

**Scope of Project:**

The proposed trail designation encompasses 11.5 miles of more than 35 miles of existing motorized roads and trails within the county managed public forestland bordering the Mississippi River. Currently all existing trails are open for multiple uses. The proposal includes no plans to develop new trails, widen existing trails, or change existing uses. No parts of the proposed designated recreational trail run on a local, county, or state public road right-of-way.

**Summary of Trail Purpose and Intended Uses:**

This proposal would achieve the Crow Wing County Board's stated policy goals of achieving "diverse recreational opportunities that are accessible to people of all ages and abilities, while preserving the County's high quality natural areas and open space." And, it has been evaluated by professional County natural resource managers consistent with the process identified in the Crow Wing County Comprehensive Recreation Trails Plan that was approved by the County board on February 14, 2012. Designated uses on trail segments may include licensed highway vehicles, all-terrain vehicles (ATVs), off-highway motorcycles (OHMs), and all forms of non-motorized recreation uses. Off-Road Vehicles (ORVs) will not be allowed on any part of the proposed recreation trail system.

### **Proposed Trail Development Plan:**

The following steps will be taken prior to official recognition as a GIA funded recreation trail system:

- 1.) Cuyuna Iron Range Riders ATV Club secures local government unit sponsor (Crow Wing County).
- 2.) Cuyuna Iron Range Riders ATV Club obtains GIA funding through the State of Minnesota to develop and maintain a recreation trail on county administered lands.
- 3.) Crow Wing County issues the Cuyuna Iron Range Riders ATV Club the trail permit.
- 4.) Trail surfaces on existing forest trails within the trail system are rehabilitated (i.e., hardened, shaped, graded, etc.) to a sustainable and safe condition by the Cuyuna Iron Range Riders ATV Club.
- 5.) Cuyuna Iron Range Riders ATV Club installs appropriate safety and regulatory signage as per “Forest Access Signing and Placement Guidelines (2005)”. Also, the club will install amenities at picnic and parking areas (i.e., grills, picnic tables).
- 6.) Crow Wing County Land Services and the Minnesota DNR create brochures and other paper and electronic literature for trail use (i.e., safety, informational, advertising).
- 7.) Mississippi River Northwoods Trail officially recognized as a GIA recreation trail system and has statewide significance as such.

### **Trail Signage Plan:**

The County will utilize the MN DNR signage guidelines as identified in the “Forest Access Signing and Placement Guidelines (2005)”. Safety and regulatory signage will provide useful and necessary information to trail users. The information kiosk at the trail head will inform users about safe, responsible, and legal recreation trail use practices.

All trails will be identified for the intended uses to ensure users have a safe experience and the natural resources are protected.

All posts, hardware, and signs will be paid for by GIA funding and the Cuyuna Iron Range Riders ATV Club. Signs will be provided by the MN DNR. All signs will be installed by the Cuyuna Iron Range Riders ATV Club.

### **Enforcement:**

Currently, both the Crow Wing County Sherriff’s Office and DNR Conservation Officers respond to and enforce violations in the Mississippi River Northwoods area. The Sheriff’s Office receives funds to monitor County recreation ATV use from the Off-Highway Vehicle Safety Enforcement Grant provided by the State of Minnesota. If the proposed recreation trail is approved by Crow Wing County and receives GIA funding, it will be periodically patrolled by Conservation Officers and the Sherriff’s Office based on trail user counts and incidences reported. Also, the Minnesota DNR’s Trail Ambassador’s Program will be initiated. Ambassador volunteers are responsible for greeting fellow outdoor enthusiasts, educating trail users, giving minor aid in emergencies, and providing useful information about responsible OHV use on public lands. Additionally, Ambassadors provide valuable trail user data to the County and State. An information kiosk at the proposed trail head will inform trail users about safe, responsible, and legal recreation trail use practices. As part of the

Comprehensive Recreation Trails Plan's "Trail Monitoring and Enforcement Plan", the proposed recreation trail will be tracked on an annual basis by the Sheriff's Department for recreation related complaints and incidents. Also, on a weekly basis, Crow Wing County will review Conservation Officer reports from the Minnesota DNR. And, as per the Comprehensive Recreation Trails Plan, a number of other measurables will be tracked on the proposed trail including:

- Review of Trail Ambassador Reports
- Meetings with DNR and enforcement partners regarding trail management coordination
- Tracking of Public Feedback and Trail User Comments
- Specialized Seasonal Trail Enforcement
- Grant-in-Aid (GIA) Trail Maintenance Agreements and Management
- Specialized Seasonal Trail Monitoring

Based on the monitoring information generated from those reports and meetings, Crow Wing County will re-align, make use changes, or temporarily or permanently close portions of the trail at any time.

### **Proposed Trail Maintenance Plan:**

NOTE: All maintenance will be performed by the Cuyuna Iron Range Riders ATV Club.

April – October: Trails are monitored and cleared of deadfall and debris as needed.

July - September: Where necessary, trails are mowed to improve visibility and reduce fire hazards.

May – October: Signage is inspected and/or replaced for user safety and enjoyability.

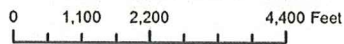
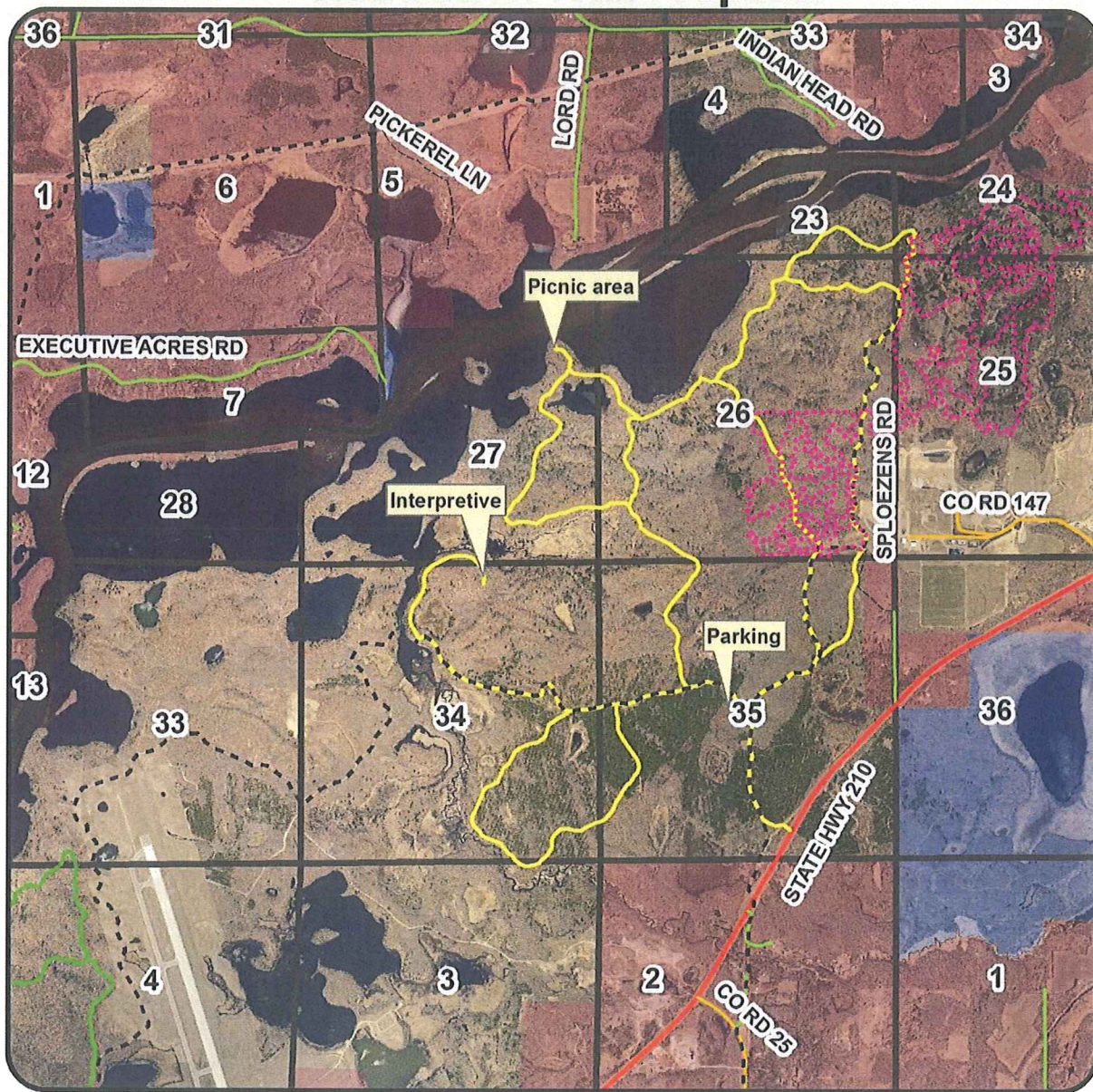
May – October: General maintenance and monitoring of the trail surface including blading, grading, dust control, and/or resurfacing as needed.

The proposed trail maintenance plan schedule is identified below:

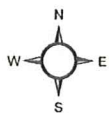
### **Trail Maintenance Plan Schedule** *(ie. mowing, dust control, clearing, signage, blading etc.)*

	Jan	Feb	Mar	Apr	May	Jun	Jul	Aug	Sep	Oct	Nov	Dec
Clearing				X	X	X	X	X	X	X		
Mowing							X		X			
Signage					X	X	X	X	X	X		
General Maintenance					X	X	X	X	X	X		

# Mississippi River Northwoods Trail Recreation Trail Proposal



1 inch equals 0.49 miles



**Legend**

- Northwoods Trail Proposal
- Existing Designated Recreation Trails**
- Type**
- - - Cross Country Skiing
- - - OHM
- - - Snowmobile
- Sections
- County
- Private
- State (DNR)

Crow Wing County  
Public Land Management  
322 Laurel Street, Suite #12  
For non-legal, reference use only

6/17/2015

Crow Wing County Coordinates (projection) ArcGIS 10.1

218-824-1115

**Mississippi River Northwoods  
PROPOSED TRAIL DESIGNATION  
March 16, 2016**

**Trail Suitability Analysis**

**Trail Suitability Criteria:** As set forth in the Crow Wing County Comprehensive Recreation Trails Plan, County natural resource managers use the following criteria to evaluate trail proposals and to improve trail planning, design and maintenance. The criteria are designed to inform an objective evaluation process with flexibility to address the diversity of situations that exist. The results of the evaluation provide information about the potential impacts of the trail and mitigations that may be needed.

The County's professional natural resource managers utilize the following scoring scale: 5= Most desirable condition, 1= Least desirable condition:

1. **Visual Quality and Landscape - *Scenic Features, Points of Interest:*** 4 of 5 – Located entirely within the Aitkin Moraine glacial landscape, the proposed designated trail consists of areas of varying rolling topography and scenic views between hills conducive for wildlife viewing, especially birds and mammals. Former Potlatch Corporation owned lands in the area are now mature pine forests adding to the diversity on the landscape. Most significantly the visual quality of the proposed designation is greatly enhanced by the inclusion of over 2.5 miles of trail bordering the scenic Mississippi River. A rest stop on “Northwoods Point” adjacent to the Mississippi River provides a scenic view of the river and surrounding landscape. Because periodic forest management activities have occurred regularly over the past half-century in the area, 40% of the forest is younger than 20 years old and 85% is younger than 40 years.
2. **Trail Linkages and Networks - *Linkages to existing trails:*** 2 of 5 – The applicant indicates a desire to connect this proposal to other local multiple-use trails and cities including the Southern Loop ATV Trail, the Miller Black Bear Area Trail, and the City of Brainerd. However, the lack of a bridge to cross over Sand Creek to the west, a local township ordinance prohibiting ATV use on township roads to the east, and private ownership patterns surrounding the County public land makes linkage to other trails currently not feasible. The proposed trail designation length of 11.5 miles on existing forest roads and trails is significantly shorter than what most off-highway vehicle enthusiasts seek as a specific riding destination<sup>1</sup>.
3. **Impacts on Adjacent Private Properties - *Need for easements, permits, or mitigations outside of County lands:*** 4 of 5 – The proposed trail lies entirely within Crow Wing County managed public forestland. There are 19 privately owned parcels within ½ mile of the proposed designation, and only three of the 19 private parcels pass within 600 feet of the proposed designation. Proposed mitigations include safety and regulatory signs consistent with the Minnesota DNR's “Forest Access Signing and Placement Guidelines”.
4. **Proximity to Services - *Gas, food, lodging, water, campgrounds, and rest stops:*** 3 of 5 –The cities of Crosby and Ironton are located approximately 6.5 miles to the east. The City of Brainerd is located approximately 4 miles to the west. State and private campgrounds, including the Cuyuna Country State Recreation Area, and Lum Park in Brainerd, are located in close proximity to the proposed designated trail. The plan does not call for the installation of any portable restrooms, shelters, or drinking water facilities.

---

<sup>1</sup> State of Minnesota, Department of Natural Resources, 2007. Trail Planning, Design, and Development Guidelines. “Average OHV Trail User Outing.” Trails and Waterways Division, 500 Lafayette Road, St. Paul, MN 55155-4052. p. 4.24.

5. **Public Support - Clubs and User Groups:** 3 of 5 – In addition to the support of the applicant Cuyuna Iron Range Riders ATV Club, the following 22 area business and community groups have also expressed support for the proposed trail designation:
- Central Lakes ATV Club
  - The Village Inn
  - Crosby Drug Store
  - Y-Club
  - Hassies
  - Crosby Bakery
  - Cuyuna Country Auto Center
  - Deerstand
  - Country Inn of Deerwood
  - Deerwood Motel
  - True Value of Deerwood
  - Wood Tick Inn
  - Bridge Tavern
  - Barstock Liquors
  - Spalding
  - Dairy Queen of Crosby
  - Jimmy's Pizza
  - C-I Pub
  - Town Tavern
  - Ya Betcha
  - Pine Center Sportsmen's Club
  - Camp Ripley/Veterans State Trail Committee
6. **Plan for Maintenance - Available funds and partnerships:** 5 of 5 – The Cuyuna Iron Range Riders ATV Club plans to secure Crow Wing County as the local government unit sponsor and seek funding through the MN DNR Off-Highway Vehicle (OHV) Grant-In-Aid (GIA) program. GIA funding would partially cover the cost of signage, maintenance, monitoring, amenities, and enforcement. The remaining funding would come from the club's private finances. Upon designation, the club plans to fully maintain the designation including the installation of information and regulatory signage.
7. **Public Safety Considerations - Access for emergency services or hazards:** 4 of 5 – The proposed trail head parking area is located north of the main entrance to the site and is directly accessible off State Highway #210. Emergency services are located within 7 miles, including both the Crosby Regional Medical Center and Brainerd's Essential Health / St. Joseph's Medical Center. Additionally, many existing forest roads and trails are wide enough to accommodate emergency vehicles, including Sploezen's Road and main access arteries historically used to haul forest products to local producers. The proposed trail itself contains gently rolling to level topography with no challenging steep segments or hill climbs.
8. **Availability of Parking Areas:** 5 of 5 – The proposed trail head parking area is located north of the main entrance to the site and is directly accessible off State Highway #210 on an old timber sale landing area. This un-paved area will accommodate up to 10 vehicles or 6 vehicles with trailers for parking.
9. **Opportunities for Interpretive Information and Public Education Interpretive Info:** 5 of 5 – The proposed designated trail navigates through a historical and culturally rich area, and is in proximity to the scenic Mississippi River. Native Americans utilized these woodlands as their hunting and living areas. Many species of birds and mammals are present on the land. The Mississippi River is a scenic back-drop to the north



of the proposed designated trail and offers a great opportunity for visitors to learn about wildlife and Native American culture along the Mississippi River. Forest management activities including tree planting and timber harvests offer the opportunity to educate the public on the benefits of sustainable ecologically based forest management

The majority of the proposed designation lies upon property known as the Mississippi River Northwoods. This property was purchased from private ownership with Outdoor Heritage Funds appropriated by the state legislature as recommended by the Lessard-Sams Outdoor Heritage Council. The project is an example of the important role counties have to play in effectively managing conservation lands. Specifically, county management of the Northwoods property will permanently protect 2,000 acres of wildlife habitat in forests and wetlands and 2.7 miles of river frontage from fragmentation, parcelization and development. The proposed designation will also enhance access to hunting, fishing and recreational opportunities available on the land. Signage greeting visitors was installed at the entrance in 2013 recognizing the role of Outdoor Heritage Funding in protecting habitat and the legacy of our outdoor traditions on this land.

- 10. Soil Conditions, Slope and Grade – Degree of impact and mitigations:** 4 of 5 – The proposed designation occurs within the Riverton Moraine, meaning glacial deposits consist mostly of loams and rocky material and to a lesser extent some sands. Much of the native surface consists of rocky material (gravel, cobbles, and stones) mixed in with the loam, creating structural stability that is important for multiple use trails. The rocky materials resist compaction, drain well, and add traction.<sup>2</sup> No segments have a slope greater than 20%, meaning the proposed designation will provide safe conditions for nearly all riders. Using GIA funding, the club will maintain all designated trail surfaces to a safe and sustainable condition, usable for multiple recreation types. In order to reduce compatible use conflicts and limit the amount of activity during hunting seasons, the proposed designation will be closed to recreational OHV use October 31 through April 30. Consistent with the county forest management plan, segments of the proposed designation may be closed periodically following significant weather events or during periods of vulnerable trail conditions which create unsafe and unsustainable trail conditions.
- 11. Rare, Threatened or Endangered Species or Habitats – Degree of risk and impact:** 4 of 5 – Because the trail proposal includes no new trail construction and will result in no changes to the current allowed uses, the proposed designation will not significantly affect wildlife. Crow Wing County utilizes the Natural Heritage Information System (NHIS), a collection of databases containing information about Minnesota’s rare natural features maintained by the Division of Ecological Resources within the Department of Natural Resources. The NHIS is continually updated and is the most complete source of data on Minnesota’s rare or otherwise significant species, native plant communities, and other natural features. The NHIS indicates that three species of conservation significance occurs on or within one mile of the proposed designation, including:
- Blanding’s turtles (*Emydoidea blandingii*), a state-listed threatened species, has been documented in the vicinity of the project areas and may be encountered by recreation trail users. The State of Minnesota has provided an environmental review fact sheet<sup>3</sup> which will be utilized to minimize impacts to this species.

<sup>2</sup> State of Minnesota, Department of Natural Resources, 2007. Trail Planning, Design, and Development Guidelines. “General Properties of Native Soils for Native Surface Trail Use.” Trails and Waterways Division, 500 Lafayette Road, St. Paul, MN 55155-4052. p. 6.8-6.10.

<sup>3</sup> State of Minnesota, Department of Natural Resources Division of Ecological and Water Resources, 2008. Environmental Review Fact Sheet Series: Blanding’s Turtle. Accessed on 6/18/2015 @ [http://files.dnr.state.mn.us/natural\\_resources/animals/reptiles\\_amphibians/turtles/blandings\\_turtle/factsheet.pdf](http://files.dnr.state.mn.us/natural_resources/animals/reptiles_amphibians/turtles/blandings_turtle/factsheet.pdf)

- The Bald Eagle (*Haliaeetus leucocephalus*), a state-listed species of special concern, has been documented in the vicinity of the project area and may be encountered by recreation trail users. The United States Fish and Wildlife Service has recommended measures to avoid disturbing bald eagles during recreational activities. The United States Fish and Wildlife Services' National Bald Eagle Management Guidelines indicate that Bald Eagles are "...unlikely to be disturbed by routine use of roads, homes, and other facilities where such use pre-dates the eagles' successful nesting activity in a given area." And therefore in most cases, "...ongoing existing uses may proceed with the same intensity with little risk of disturbing bald eagles."<sup>4</sup> As this designation proposal occurs on existing forest trails which have been open for many years and would continue to be open to continuous recreation use for 6 months (50%) of the year, it would constitute an "ongoing" use and would not need to be adjusted or relocated to minimize potential impacts on a nesting pair.
- Red Shouldered Hawk (*Buteo lineatus*), a state-listed species of special concern, has been documented to occur within one mile of the proposed designation on the opposite side of the Mississippi River. Conservation measures important to promoting occupancy by this species include retaining large amounts of mature deciduous forests, limiting non-forest areas, avoiding large clear-cut areas, and maintaining partial-to-closed canopy conditions.<sup>5</sup> Because the proposed designation occurs on existing trails and does not involve the cutting of canopy trees, the proposed trail will have no effect on Red Shouldered Hawks.

**12. Wetlands and Public Waters – Degree of impact, permitting and mitigations:** 5 of 5 – Since the trail designation contains no new trail construction and does not change the uses which are currently allowed, no Environmental Assessment Worksheet (EAW) or Pollutant Discharge Elimination System (NPDES) permit is required (see: MN §4410.4300 Subp. 37 and MN §7001.1 thru 7001.1350). All trail planning, design, and development will incorporate recommendations from the Trail Planning, Design and Development Guidelines manual. The manual includes detailed considerations for ecological and physical sustainability, (including trail-alignments, soils, slopes, drainage, etc.) wetland, and water issues among other important topics. Additionally, all forest management activities and as well as trail building and maintenance in the area incorporates concepts from the Voluntary Site-Level Forest Management Guidelines best management practices.

**13. Cultural Resources or Historic Sites – Degree of risk and impact:** 4 of 5 – According to the State Historic Preservation Office (SHPO) archeological database, several scattered artifacts and one structural ruin was discovered in the vicinity of the proposed designated trail, particularly near the Mississippi River. According to Minnesota State Archeologist Scott Anfinson, as long as the "...project does not involve any new significant excavation, it will not affect archeological sites." Since the proposal does not involve the creation of new trails, widening of existing trails, or changes in the types of uses, the archeological sites will not be affected.

**Trail Suitability Score for the Project: 52 out of 65.**

**Scoring Categories:**

39 – 65; Trail Proposal deemed suitable for further planning and development

20 – 39; Trail Proposal may be suitable and should be reviewed for opportunities to reduce limitations and/or necessary mitigations.

<sup>4</sup> United States Fish and Wildlife Service. May, 2007. National Bald Eagle Management Guidelines. "Recommendations for Avoiding Disturbance at Nest Sites." pp. 9-10. Accessed on 6/18/2015 @ <http://www.fws.gov/midwest/eagle/pdf/NationalBaldEagleManagementGuidelines.pdf>

<sup>5</sup> Minnesota Department of Natural Resources (online). 2015. Rare Species Guide. "Red Shouldered Hawk: Conservation / Management." Accessed on 6/18/2015 @ <http://www.dnr.state.mn.us/rsg/profile.html?action=elementDetail&selectedElement=ABNKC19030>

20 or less; Trail Proposal is unlikely to be suitable for investing further planning efforts as proposed.



Lessard-Sams Outdoor Heritage Council  
The State of Minnesota

State Office Building, Room G95    100 Dr. Rev. Martin Luther King Jr. Blvd.    Saint Paul, Minnesota 55155

April 8, 2016

Mark Liedl  
Land Services Director  
Crow Wing County  
322 Laurel Street, Suite 11  
Brainerd, MN 56401

Re: Mississippi River Northwoods Recreation Trail designation & Mississippi Northwoods Habitat Complex Protection – ML 2012, Ch. 264, Art. 1, Sec. 2, Subd. 3(b)

Dear Mr. Liedl:

Please accept this letter as “written comment” with respect to the Mississippi River Northwoods (MRNW) Recreation Trail designation with specific regard to the proposal to designate, as multi-use, 11.5 miles of existing trails within the MRNW.

While reviewing the related press release, proposed trail designation application summary and proposed trail designation document, several questions arise with the overall designation application and review.

1. **“11.5 miles of existing forest trails within 2,000 acres of Crow Wing County managed public forestland commonly known as the MRNW area”.** On March 13, 2015, you testified before the Lessard-Sams Outdoor Heritage Council (LSOHC) that there were approximately 21 miles of roads and trails upon the MRNW property and that approximately 10 miles were 10 feet wide or greater. A 3/9/2015 map provided at the council meeting from Crow Wing County listed the “existing forest trails = 19.6 mi.” while a 9/30/2015 letter from Land Services Supervisor Kirk Titus stated the MRNW property “contained over 25 miles of existing forest roads and trails.” In contrast, the Proposed Trail Designation Application Summary defines “35 miles of forest trails within the 2,000 acres.” Please provide clarification as to how many miles of trails are currently on the MRNW property. The four different trail numbers are difficult to follow and it would be most helpful if you could develop a table or diagram of the miles of trails for the LSOHC. Further, could the county share how many miles will be maintained under the county program and what designation the trails will hold in the county program. It would be most helpful if you could give an assurance to the council that no new trails will be constructed (per Kirk Titus 9/30/2015 letter) if that is what is intended.
  
2. **“The proposed designation occurs on trails with existing motorized use and includes no plans to develop new trails.”** Your 3/13/2015 testimony before the LSOHC indicated that under county forest status all trails are open to motorized use. You further stated it was the County’s objective to move toward a more managed system of trails. The trail designation at hand appears to lend toward that objective for the proposed 11.5 miles of trails, however it appears that possibly the remaining 23.5 miles of trails will remain without designation of any kind and thus could be open to unfettered motorized use under county forest guidelines. This could then

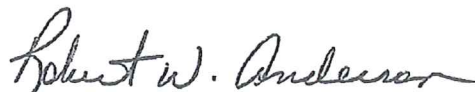
generate the question “are the entire 35 miles of trails currently open to motorized use?” If so, does the county plan restrictions on the remaining 23.5 miles?

3. **“The proposed designation will also enhance access to hunting, fishing and recreational opportunities available on the land”.** The words “enhance access” also need a little more explanation or clarification depending on what the number of miles are and their designation especially in light of the proposed designation that trails would be open to motorized recreation use from May 1 thru October 31 after which the trails would be closed to motorized recreation riding from November 1 through April 30 as per the County’s Forest Resources Plan. It appears that other than the “designation” of the trails, there is no change to current County Forest Resource Plan procedures. Please help bring an understanding as to what will increase access and protect the resource?
  
4. **“Trail Linkages and Networks – Linkages to existing trails.”** It is indicated that “the applicant desires to connect this proposal with other local multiple-use trails and cities including the Southern Loop ATV Trail, the Biller Black Bear Area Trail, and the City of Brainerd.” In the current case, and in potential reality, the negative impact upon the MRNW property from a wildlife habitat perspective could be definite. The question as to the degree of impact will depend upon the amount of increased traffic. What steps might be taken to “protect, restore and enhance” and to deter any detrimental impacts? Some thought needs to occur on how to measure improved habitat or detrimental impact to habitat. Such could put the county in a position of having to reimburse the OHF for compensation for the detrimental impacts to habitat (MS 97A.056, Subd. 15) should improvement not occur.

Access and public use of OHF purchased land is an expected and a desired outcome of fee-title acquisitions. However, constitutionally those acquisitions must function as habitat. It is in concern for that habitat that these questions are raised.

It is my understanding that the next step within the County’s Recreation Trail Proposal and Planning Process, after this 30-day public comment period, is presenting the Trail Project Brief to the Citizens Natural Resource Advisory Committee. When that step is taken, I would greatly appreciate being notified so I may have the opportunity to provide testimony to the committee on behalf of the LSOHC.

Respectfully,



Bob Anderson  
Chair, Lessard-Sams Outdoor Heritage Council

Enclosure

CC: Crow Wing County Board Members  
MN DNR Commissioner Tom Landwehr  
LSOHC Members

# Minnesota Department of Natural Resources

500 Lafayette Road · Saint Paul, Minnesota · 55155-4037

Office of the Commissioner

651-259-5555



June 9, 2016

Commissioner Doug Houge, Chair  
Crow Wing County Board of Commissioners  
326 Laurel Street, Suite 13  
Brainerd, Minnesota 56401

RE: Mississippi River Northwoods Proposed Trail Designation

Dear Chair Houge:

I am writing to follow up on a telephone conversation I had earlier this week with Commissioner Paul Thiede regarding the proposed trail designation on the Mississippi River Northwoods property. In that conversation, I expressed some concerns related to potential misalignment with the Outdoor Heritage Funds used to purchase that property and the possible effect a misalignment could have on Grant-In-Aid funding for this project. Because the DNR has no direct authority over the use of OHF, we have not provided comments on the proposal to date. However, because I value the relationship the DNR has with Crow Wing County, I do want to share the concerns as they relate to future DNR funding prior to the County Board's decision.

As you know, this property was purchased with Outdoor Heritage Fund (OHF) dollars, which are constitutionally dedicated for habitat purposes. Specifically, Minnesota's Constitutional Amendment – Article XI stipulates that *"...33 percent of the receipts shall be deposited in the outdoor heritage fund and may be spent only to restore, protect, and enhance wetlands, prairies, forests, and habitat for fish, game, and wildlife."*

The OHF is commonly used to protect habitat lands that provide multiple benefits and uses, including trails, as long as habitat is the primary purpose of the protected land. The Mississippi River Northwoods trail system, as proposed, with a large loop that connects to 23.5 miles of non-designated sections of motorized trail with potential trout stream impacts, parking lots, interpretive areas, and a picnic area, may be crossing a threshold beyond which fish and wildlife habitat benefits are subordinate to trail recreation and therefore inconsistent with the language in the Constitution. As noted above, this could potentially affect a Grant-In-Aid proposal since Grant-In-Aid funds cannot be granted when a recipient is in violation of federal or state laws (M.S. 84.930(b)).

I want to emphasize that DNR believes trails and habitat can be compatible, and in fact DNR has motorized and non-motorized trails on lands administered by DNR and purchased with OHF. These trails provide recreational benefit without impacting the primary purpose of fish and wildlife habitat protection, restoration, and enhancement. I further believe there are ways in which the trail proposal could be modified to better align with the purposes of the OHF. These options could include:

- Reducing total miles.
- Being more specific about how un-designated miles will be managed.



Commissioner Houge  
June 9, 2016  
Page Two

- Describing a purpose for each trail segment (i.e., provide access to the river, connect existing trails on adjacent lands, etc.).
- Reimbursement of OHF funds for trail, parking lot, and picnic area footprints.

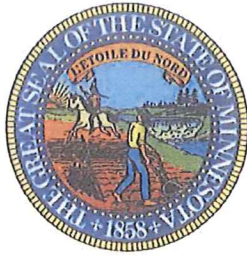
I would welcome the opportunity to meet with you to discuss the project and explore my concerns, your perspectives, and potential opportunities.

Sincerely,



Tom Landwehr  
Commissioner

c: Paul Thiede, Crow Wing County Commissioner



Lessard-Sams Outdoor Heritage Council  
The State of Minnesota

State Office Building, Room G95 100 Dr. Rev. Martin Luther King Jr. Blvd. Saint Paul, Minnesota 55155

June 30, 2016

Mark Liedl Land Services Director  
Crow Wing County  
322 Laurel Street, Suite 11  
Brainerd, MN 56401

Re: Mississippi River Northwoods Habitat Complex Protection (ML 2012, Ch. 264, Art. 1, Sec. 2, Subd. 3(b)) ATV trail plan and potential land transfer.

Dear Mr. Liedl:

At its June 29, 2016 meeting, the Lessard-Sams Outdoor Heritage Council (LSOHC) was given an update on the status of the recreational trail plan the County recently approved and was also made aware of, and discussed, Crow Wing County's request for bids for appraisals on parcels of the Mississippi River Northwoods (MRNW) property for the purpose of a land exchange with additional county tax forfeit lands.

It was quite evident by the discussion that a majority of the Council does not approve of the County's current trail plan for the MRNW site and believe the County may be out of statutory compliance. Staff has been directed to confer with the Attorney General's Office and the Legislative Auditor to investigate potential remedies the Council may have.

As you may be aware, MS 97A.056, subd. 15 dictates that any conveyance of interest in real property acquired with Outdoor Heritage Funds must first be reviewed and approved by the LSOHC. Per the Council's discussion at the June 29, 2016 meeting, please be aware that the Council, at this time, is not interested in entertaining any exchange of parcels with regards to the MRNW property. Additionally, by unanimous vote of the 11 council members present, the Council requests Crow Wing County to not proceed with any appraisal process regarding a MRNW land exchange until such time as the Council decides to entertain a land exchange proposal.

With respect to the Council's request of Crow Wing County to not proceed with any appraisal process, the Council members expressed their concern that the County receive this message as soon as possible so that the County does not unnecessarily waste county staff time nor accrue unnecessary expenses.



Mark Liedl, Land Services Director  
Crow Wing County  
June 30, 2016  
Page Two

If you would like to meet and discuss this and/or other issues, please let me know. I would be happy to host a meeting at my office in St. Paul or to come to your office in Brainerd.

Respectfully,



Mark Wm. Johnson  
Executive Director

cc: Lessard-Sams Outdoor Heritage Council members  
Mr. Tom Landwehr, Commissioner, Minnesota Department of Natural Resources



Lessard-Sams Outdoor Heritage Council  
The State of Minnesota

State Office Building, Room G95 100 Dr. Rev. Martin Luther King Jr. Blvd. Saint Paul, Minnesota 55155

July 5, 2016

Commissioner Tom Landwehr  
Department of Natural Resources  
500 Lafayette  
St. Paul, MN 55155

Regarding: Mississippi River Northwoods

Dear Commissioner Landwehr,

During its June 29, 2016 meeting, the Lessard-Sams Outdoor Heritage Council (LSOHC) discussed its concerns regarding the Mississippi River Northwoods (MRNW) property in Crow Wing County (ML 2012, Ch. 264, Art. 1, Sec. 2, Subd . 3(b)). Within that conversation, the Council discussed various potential actions at its disposal to help settle what the Council views as expansion of recreational trail activity that will likely be adversarial to wildlife and habitat (i.e. Crow Wing County's designation of 11.5 miles of existing trails within the MRNW property as "multiple use recreation trails"). Among other factors, such as high trail density, "open" use status of all remaining trails, and proposed construction of a parking area and picnic area, Council consensus appears to be that this designation of trails is leading to an almost certain intensification of all-terrain vehicle activity upon MRNW that could be antagonistic to wildlife habitat health and is incongruent with the original intent of the appropriation.

Per the Council's deliberation and a motion passed by voice vote, please consider this letter a request from the Lessard-Sams Outdoor Heritage Council for DNR to cease any further activity related to the MRNW property with respect to any trail-oriented grants or grant requests.

The Council appreciates your consideration of this matter and appreciates the efforts of you and your staff on behalf of conserving and protecting Minnesota's natural resources.

Respectfully,

A handwritten signature in blue ink, appearing to read "Mark W. Johnson".

Mark W. Johnson  
Executive Director

Cc: LSOHC Members  
Mark Liedl, Crow Wing County Land Services Director



**Lessard-Sams Outdoor Heritage Council  
The State of Minnesota**

State Office Building, Room G95 100 Dr. Rev. Martin Luther King Jr. Blvd. Saint Paul, Minnesota 55155

**November 1, 2016**

**Commissioner Tom Landwehr  
Department of Natural Resources  
500 Lafayette Road  
St. Paul, MN 55155**

**Re: Mississippi River Northwoods Recreation Trail Designation and MRNW Habitat Protection,  
ML 2012, Ch. 264, Art. 1, Sec. 2, Subd. 3(b)**

**Dear Commissioner Landwehr:**

Per a vote by the Lessard-Sams Outdoor Heritage Council (LSOHC) at its September 29, 2016 meeting, please consider this letter a request from the LSOHC for Minnesota Department of Natural Resources (DNR) to initiate appropriate legal action relative to Crow Wing County and the terms of their Outdoor Heritage Fund (OHF) accomplishment plan, "Mississippi Northwoods Habitat Complex Protection," ML 2012, Ch. 264, Art. 1, Sec. 2, Subd. 3(b). The council directs its concerns to the DNR as the holder of OHF grant agreements.

The LSOHC has multiple concerns regarding trail use on the Mississippi River Northwoods (MRNW) property in Crow Wing County acquired in 2012 using OHF. OHF monies are constitutionally dedicated for use only to "restore, protect, and enhance wetlands, prairies, forests, and habitat for fish, game, and wildlife." At issue for the LSOHC is the possible decline of quality of wildlife habitat on the 1,183 acre MRNW property resulting from Crow Wing County's designation of 11.5 miles of existing trails on the property for ATV use, the stated intent of "open" use status of all remaining trails, and the resultant intensification of recreational trail motorized activity upon the property. Increased motorized access and use is incongruent with the original purpose of the appropriation and, the council believes, is in violation of the OHF accomplishment plan. Additional factors, such as the proposed construction of a parking area and picnic area could threaten to further deteriorate wildlife habitat quality on the property.

In light of these multiple concerns, the LSOHC respectfully requests DNR to initiate appropriate legal action to bring Crow Wing County back into compliance with the terms of the OHF accomplishment plan, the grant contract, and the original purpose of the appropriation.

The council appreciates your consideration of this matter and the efforts of you and your staff on behalf of conserving and protecting the legacy of Minnesota's natural resources.

Respectfully,



Robert (Bob) Anderson  
Chairman, Lessard-Sams Outdoor Heritage Council

Enc. Accomplishment Plan and Final Report for the program (completed parcel lists not included)

Cc: LSOHC Members  
Mark Liedl, Crow Wing County Land Services Director

# Minnesota Department of Natural Resources

500 Lafayette Road · Saint Paul, Minnesota · 55155-4037

Office of the Commissioner

651-259-5555



January 23, 2017

Mr. Doug Houge, Chair  
Crow Wing County Board of Commissioners  
Historic Courthouse  
Brainerd, MN 56401

RE: Mississippi Northwoods

Dear Commissioner Houge:

This letter is to follow up on a December 15<sup>th</sup> meeting convened by the All-Terrain Vehicle Association of Minnesota (ATVAM) during which representatives from Crow Wing County, DNR, ATVAM, and local ATV clubs were able to discuss issues related to the proposed ATV trails at Mississippi Northwoods. I'm writing to confirm my understanding of, and agreement with, that resolution.

The elements of the resolution are the following:

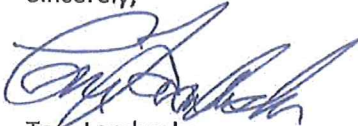
- Crow Wing County will need to consider and approve a "limited" designation for the Mississippi Northwoods property such that trails in the property are closed to OHV travel unless specifically posted as open for such use. Therefore, only those trails designated for motorized use, as set forth in the County's Grant-In-Aid (GIA) request and depicted on the attached exhibit will be posted as open to OHV travel, except that other trails will remain open for big-game hunting, as provided by state statute. This does not preclude the opportunity for OHVs to use a future multi-use trail corridor that creates a connection across the property (such as the corridor discussed during the Mississippi Northwoods acquisition).
- The ATV trail proposal will eliminate the "Picnic Area."
- The ATV trail proposal will recognize that the "Parking Lot" is currently a logging landing area, and that parking can occur when the area is not in use for forestry operations.
- Cuyuna Iron Range Riders ATV Club and Crow Wing County will revise the GIA application to reflect the changes bulleted above. DNR staff will review the revised GIA application per the usual process.
- The County wishes to proceed expeditiously with the land exchange that was integral to the County originally agreeing to accept ownership of the Mississippi Northwoods property. To achieve this goal, the Lessard-Sams Outdoor Heritage Council (LSOHC) will need to consider and approve the land exchange. DNR has reached out to LSOHC Executive Director Mark Johnson, and he has agreed to a meeting to establish a timetable for LSOHC action. DNR will facilitate scheduling of such a meeting and will assist in the review of potential lands to be exchanged.



Mr. Houge  
January 23, 2017  
Page Two

Together, I believe these points of agreement constitute a reasonable resolution to the concerns related to the appropriate use of lands purchased with Outdoor Heritage Funds. And, again, I greatly appreciate Crow Wing County working with DNR, as well as ATVAM and its local clubs, to find this resolution. I believe resolving this issue paves the way for continued state-county collaboration on future projects.

Sincerely,

A handwritten signature in blue ink, appearing to read "Tom Landwehr", written in a cursive style.

Tom Landwehr  
Commissioner

c: Timothy J. Houle, Crow Wing County  
Ray Bohn, ATVAM

# Minnesota Department of Natural Resources

500 Lafayette Road · Saint Paul, Minnesota · 55155-4037

Office of the Commissioner

651-259-5555



January 30, 2017

Mr. Robert (Bob) Anderson  
 Chairman, Lessard-Sams Outdoor Heritage Council  
 State Office Building, Room G95  
 100 Dr. Rev. Martin Luther King Jr. Blvd.  
 St. Paul, Minnesota 55155

Dear Chair Anderson:

Thank you for your letter dated November 1, 2016 notifying me of the Lessard-Sams Outdoor Heritage Council's (LSOHC) request that DNR "initiate appropriate legal action" relative to Crow Wing County and the Mississippi Northwoods project.

Following receipt of your letter, I asked DNR General Counsel to review DNR's authority with respect to this matter. The conclusion of our General Counsel is that DNR has no clear authority to initiate legal action on behalf of the LSOHC or to enforce the terms of the Outdoor Heritage Fund (OHF) Accomplishment Plan for the Mississippi Northwoods. Your letter correctly notes that DNR is the holder of OHF grant agreements, however, that particular grant agreement is now closed, meaning Crow Wing County has no further obligations to the DNR.

Alternatively, DNR met with Crow Wing County, the All-Terrain Vehicle Association of Minnesota (ATVAM), and local ATV clubs and reached a reasonable resolution to the concerns about appropriate use of lands purchased with OHF dollars. I have attached the letter I recently sent to Crow Wing County Board Chair Doug Houge confirming that resolution.

Going forward, I do believe this circumstance has raised an interesting question regarding the mechanism to enforce OHF accomplishment plan obligations long-term, and I would be happy to work with you and the Legislature on a clarification. In the meantime, please don't hesitate to contact me with any questions regarding DNR's role administering OHF funds or the resolution for Mississippi Northwoods.

Sincerely,



Tom Landwehr  
 Commissioner

c: Mark Johnson, Executive Director, Lessard-Sams Outdoor Heritage Council  
 Mark Liedl, Crow Wing County Land Services Director



**BOARD OF COUNTY COMMISSIONERS**  
**Crow Wing County, Minnesota**

**DATE: February 14, 2017**

**OFFERED BY COMMISSIONERS: Thiede and Franzen**

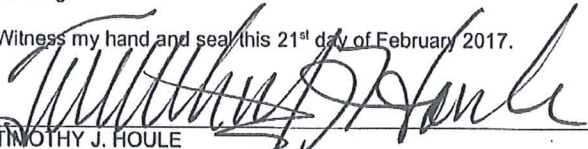
To revise the Mississippi River Northwoods trail designation and Grant-In-Aid application as follows:

- Establish "limited" designation for the Mississippi River Northwoods property such that trails on the property are closed to OHV travel unless specifically posted as open for such use. Therefore, only those trails designated for motorized use, as set forth in the County's Grant-In-Aid (GIA) request and depicted on the exhibit on file will be posted as open to OHV travel, except that other trails will remain open for big-game hunting, as provided by state statute. This does not preclude the opportunity for OHVs to use a future multi-use trail corridor that creates a connection across the property (such as the corridor discussed during the Mississippi Northwoods acquisition).
- Eliminate the "Picnic Area" in the previously approved trail designation proposal.
- Recognize that the "Parking Lot" in the GIA request is currently a logging landing area, and that parking can occur when this area is not in use for forestry operations.

STATE OF MINNESOTA )  
 COUNTY OF CROW WING) ss

I, Timothy J. Houle, County Administrator, Crow Wing County, Minnesota, hereby certify that I have compared the foregoing copy of the motion of the county board of said county with the original record thereof on file in the Administration Office, Crow Wing County, Minnesota, as stated in the minutes of the proceedings of said board at a meeting duly held on February 14, 2017, and that the same is a true and correct copy of said original record and of the whole thereof, and that said motion was duly passed by said board at said meeting.

Witness my hand and seal this 21<sup>st</sup> day of February, 2017.

  
 TIMOTHY J. HOULE  
 COUNTY ADMINISTRATOR

	<u>YES</u>	<u>NO</u>
DISTRICT #1 – KOERING	_____	_____
DISTRICT #2 – THIEDE	X	_____
DISTRICT #3 – NYSTROM	_____	_____
DISTRICT #4 – FRANZEN	X	_____
DISTRICT #5 – HOUGE	X	_____



# Minnesota Department of Natural Resources

500 Lafayette Road · Saint Paul, Minnesota · 55155-4037

Office of the Commissioner

651-259-5555



January 23, 2017

Mr. Doug Houge, Chair  
Crow Wing County Board of Commissioners  
Historic Courthouse  
Brainerd, MN 56401

RE: Mississippi Northwoods

Dear Commissioner Houge:

This letter is to follow up on a December 15<sup>th</sup> meeting convened by the All-Terrain Vehicle Association of Minnesota (ATVAM) during which representatives from Crow Wing County, DNR, ATVAM, and local ATV clubs were able to discuss issues related to the proposed ATV trails at Mississippi Northwoods. I'm writing to confirm my understanding of, and agreement with, that resolution.

The elements of the resolution are the following:

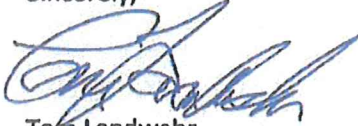
- Crow Wing County will need to consider and approve a "limited" designation for the Mississippi Northwoods property such that trails in the property are closed to OHV travel unless specifically posted as open for such use. Therefore, only those trails designated for motorized use, as set forth in the County's Grant-In-Aid (GIA) request and depicted on the attached exhibit will be posted as open to OHV travel, except that other trails will remain open for big-game hunting, as provided by state statute. This does not preclude the opportunity for OHVs to use a future multi-use trail corridor that creates a connection across the property (such as the corridor discussed during the Mississippi Northwoods acquisition).
- The ATV trail proposal will eliminate the "Picnic Area."
- The ATV trail proposal will recognize that the "Parking Lot" is currently a logging landing area, and that parking can occur when the area is not in use for forestry operations.
- Cuyuna Iron Range Riders ATV Club and Crow Wing County will revise the GIA application to reflect the changes bulleted above. DNR staff will review the revised GIA application per the usual process.
- The County wishes to proceed expeditiously with the land exchange that was integral to the County originally agreeing to accept ownership of the Mississippi Northwoods property. To achieve this goal, the Lessard-Sams Outdoor Heritage Council (LSOHC) will need to consider and approve the land exchange. DNR has reached out to LSOHC Executive Director Mark Johnson, and he has agreed to a meeting to establish a timetable for LSOHC action. DNR will facilitate scheduling of such a meeting and will assist in the review of potential lands to be exchanged.



Mr. Houge  
January 23, 2017  
Page Two

Together, I believe these points of agreement constitute a reasonable resolution to the concerns related to the appropriate use of lands purchased with Outdoor Heritage Funds. And, again, I greatly appreciate Crow Wing County working with DNR, as well as ATVAM and its local clubs, to find this resolution. I believe resolving this issue paves the way for continued state-county collaboration on future projects.

Sincerely,

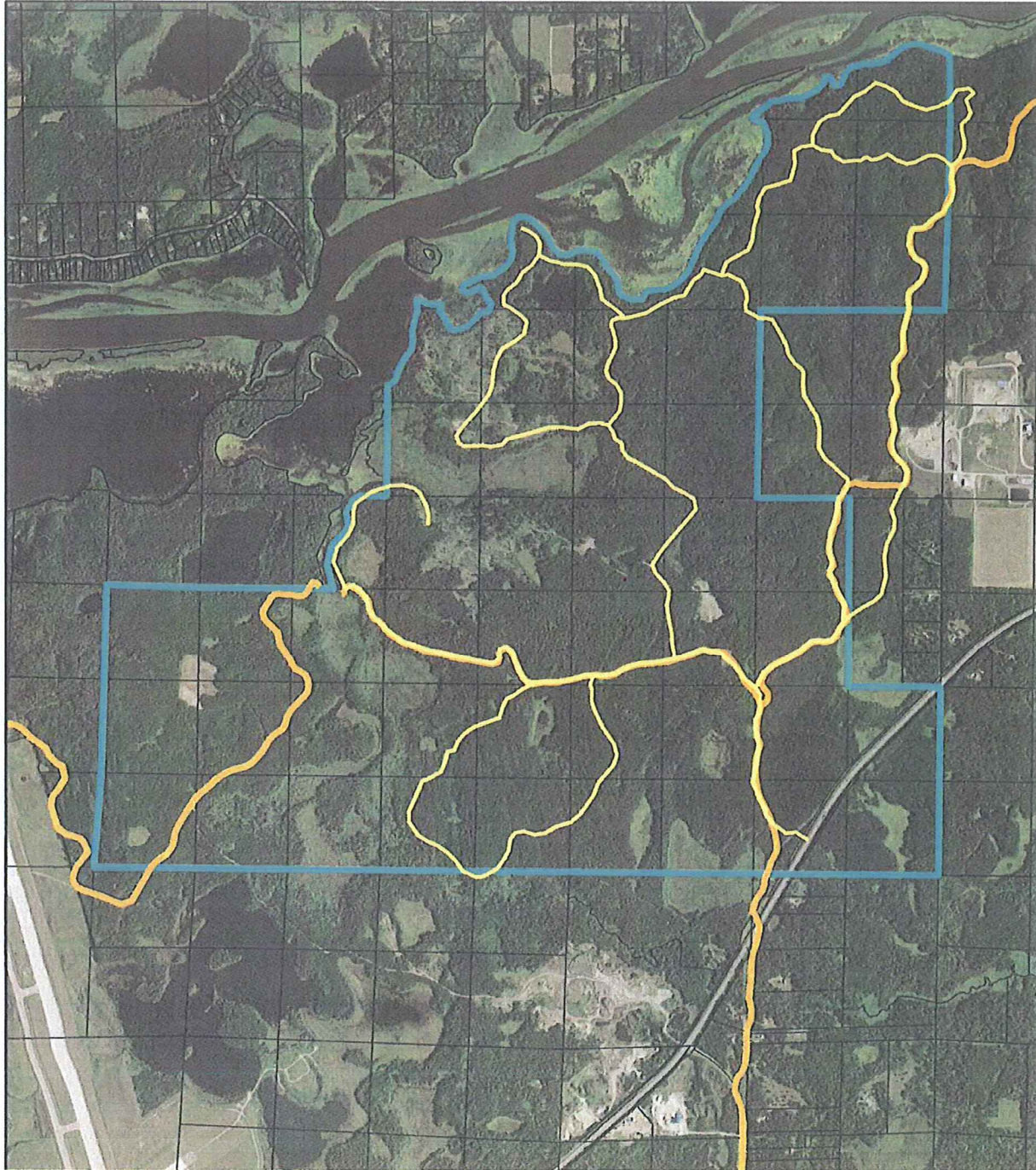


Tom Landwehr  
Commissioner


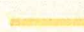

c: Timothy J. Houle, Crow Wing County  
Ray Bohn, ATVAM

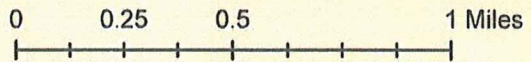
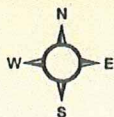
Attachment: DNR Letter 1.23.17 (2113 : Mississippi River Northwoods Trail Designation)

# MISSISSIPPI RIVER NORTH WOODS



## Legend

-  Proposed GIA Trails
-  Minnesota Snowmobile Trails
-  Mississippi River Northwoods



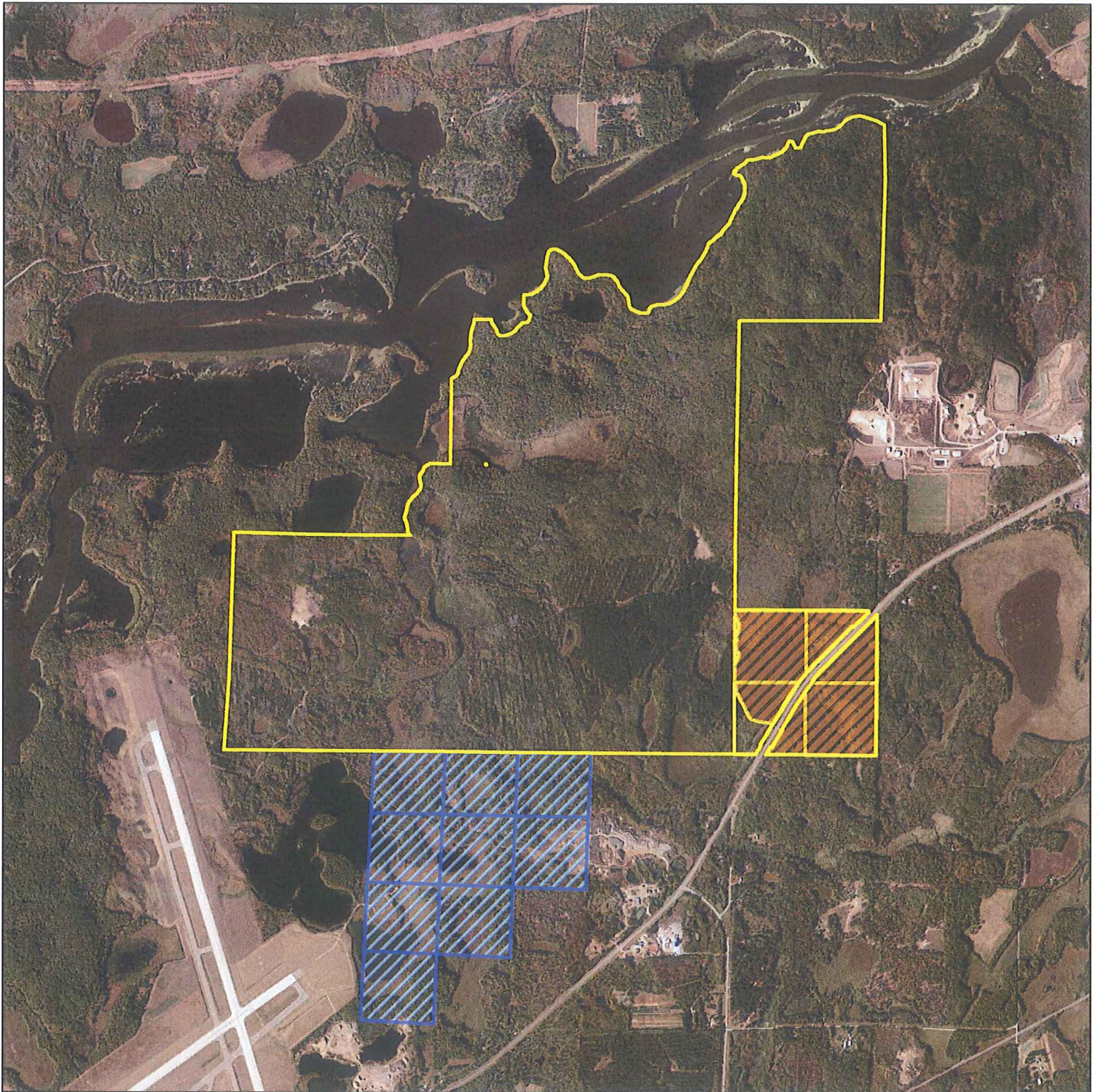
**mn** DEPARTMENT OF  
NATURAL RESOURCES

1/17/2017

Attachment: MRNW map 11717 DNR MAP (2113 : Mississippi River Northwoods Trail Designation)

# Crow Wing County Land Exchange<sup>71</sup> Mississippi Northwoods

Oak Lawn Township, Crow Wing County, MN



Mississippi Northwoods Boundary

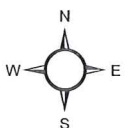


Potential Miss. Northwoods Exchange Lands (OHF) - Approx. 134 acres



Potential Crow Wing County Exchange Fee Lands

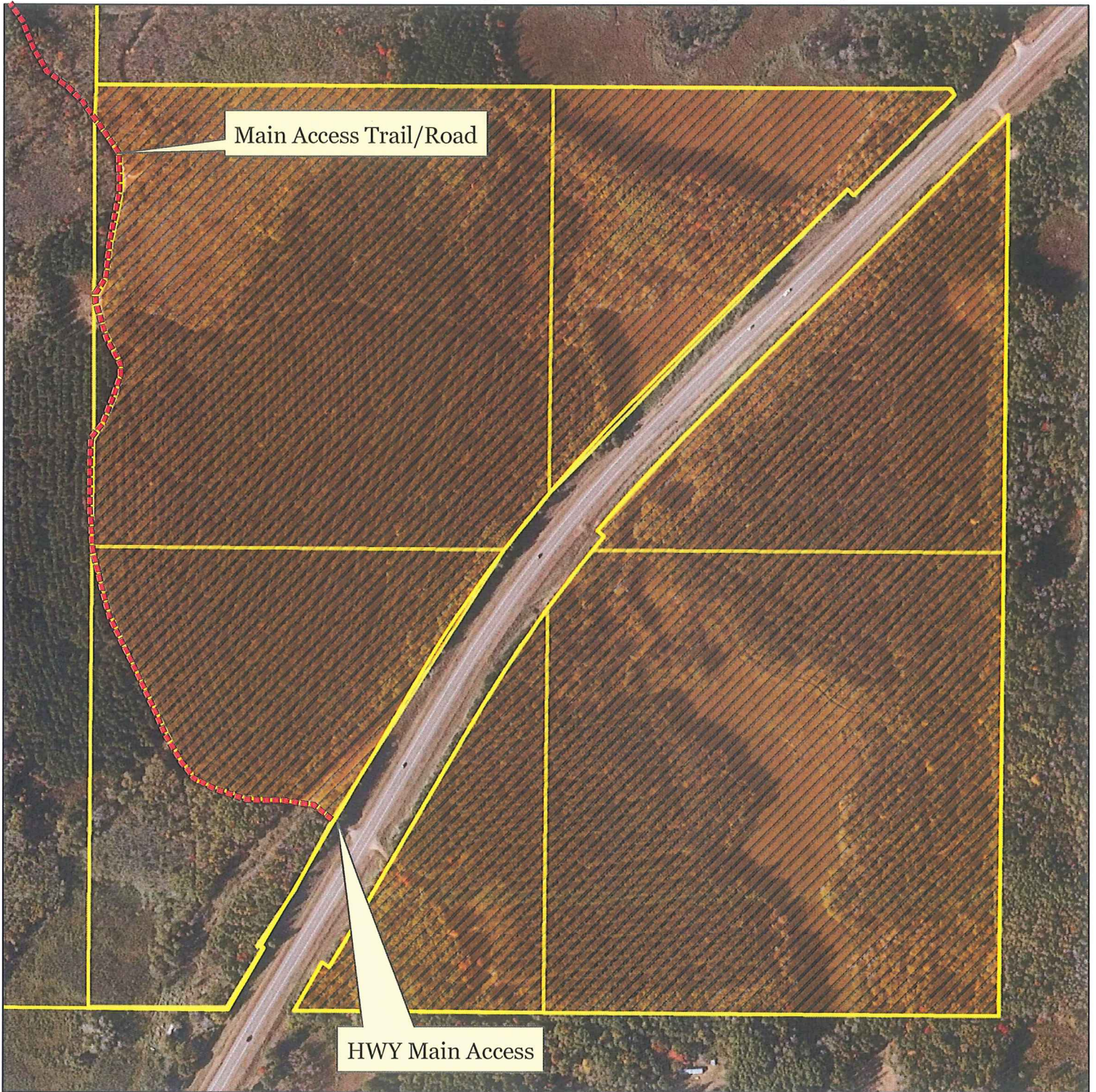
0 0.25 0.5 1 Miles



# Crow Wing County Land Exchange<sup>71</sup>

## Mississippi Northwoods

### Oak Lawn Township, Crow Wing County, MN



Main Access Trail/Road

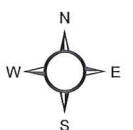
HWY Main Access

0 187.5 375 750 Feet



Miss. Northwoods Boundary Retain - Approx. 11 acres

Potential Miss. Northwoods Exchange Lands (OHF) - Approx. 134 acres



# Lessard-Sams Outdoor Heritage Council

## Laws of Minnesota 2012 Final Report



**Date:** March 06, 2015

**Program or Project Title:** Mississippi Northwoods Habitat Complex Protection

**Funds Recommended:** \$11,040,000

**Manager's Name:** Kirk Titus

**Organization:** Crow Wing County Land Supervisor

**Address:** 322 Laurel St. Suite 12

**City:** Brainerd, 56401

**Office Number:** 218-824-1138

**Email:** kirk.titus@crowwing.us

**Legislative Citation:** ML 2012, Ch. 264, Art. 1, Sec. 2, Subd. 3(b)

**Appropriation Language:** \$11,040,000 in the second year is to the commissioner of natural resources for an agreement with Crow Wing County to acquire land in fee along the Mississippi River in Crow Wing County to be added to the county forest system. The purchase price must not exceed the appraised fair market value of the property as reviewed and approved under established procedures in compliance with the Uniform Standards of Professional Appraisal Practice and the Department of Natural Resources Supplemental Appraisal and Appraisal Review Guidelines (effective July 15, 2009). A land description must be provided as part of the required accomplishment plan. Development of a paved trail on land acquired under this paragraph constitutes an alteration of the intended use of the interest in real property and must be handled according to Minnesota Statutes, section 97A.056, subdivision 15. Any plan, including trail alignment, for the development of a paved trail must be submitted to the Lessard-Sams Outdoor Heritage Council for approval. No paved trail development or paved trail use is allowed unless it is specified in the plan for trail use and alignment approved by the Lessard-Sams Outdoor Heritage Council. If additional money is needed to acquire the land under this paragraph, by December 15, 2012, the amount necessary to complete the acquisition shall be transferred from unspent appropriations under subdivision 5, paragraph (h), and added to this appropriation.

**County Locations:** Crow Wing

**Regions in which work will take place:**

- Northern Forest

**Activity types:**

- Protect in Fee

**Priority resources addressed by activity:**

- Wetlands
- Forest
- Habitat

### Abstract:

This acquisition protected 2.7 miles of Mississippi river shoreline and nearly 2,000 acres of wetland and forest/upland habitat through fee title acquisition just east of Brainerd, MN.

### Design and scope of work:

This effort protected from development 2.7 miles of frontage in the headwaters region of this globally significant river, along with approximately 1,857 acres of forest land uniquely situated in the rapidly growing Brainerd Lakes Region of Minnesota.

This parcel sits between two large tracts of forested public land along the Mississippi, creating a 9+ mile stretch of undeveloped

shoreline which become one of the largest contiguous blocks of protected lake/river shoreline in the Brainerd lakes area—in addition to being one of its most scenic. The lands are adjacent to the Crow Wing County Memorial Forest, the Loerch State Wildlife Management Area, the State of Minnesota's School Trust lands and Crow Wing County tax forfeited land (managed as forestland).

The lands contain several unique habitat features including the Mississippi River watershed, the Sand Creek trout stream, approximately 240 acres of wetland, and forestland comprising of aspen/birch, jack, red and white pine, oak, and lowland hardwoods. The Mississippi River is clearly one of the most important freshwater resources in the State of Minnesota and beyond. A significant portion of this property fronts the Mississippi's Stump Bay, a lake-like basin originally formed by the paper mill dam downstream in Brainerd. Stump Bay, and the larger basin around it, has characteristics of both river and lake habitats which provide a diversity of niches and support the area's best cosmopolitan fisheries, including a world- class bass fishery.

As a major migratory bird route, the Mississippi River basin is used by 60% of all birds found in North America, including waterfowl, shorebirds, raptors, and neotropical songbirds. The forest and riparian forest habitats of this project area are known to support osprey, Canada goose, great blue heron, killdeer, common snipe, American woodcock, and ruffed grouse. There are at least two bald eagle nests documented in the subject area. This section of the Mississippi River "flyway" is especially critical for waterfowl such as wood duck, mallard, blue-winged teal, green-winged teal, hooded merganser, and American coot. The open waters of the bay uniquely serve as an early spring stopover for waterfowl before the lakes thaw. The wild rice foliage found in the bay and along the shore of this area provides security cover and loafing sites for migrating ducks; the wild rice kernals provide critical food source. 240 acres of wetland found within this project area are also critical brooding and feeding area for waterfowl.

Mammals associated with the upland, wetland, lowland and riparian habitats of the acquired area include whitetail deer, gray wolf, coyote, red fox, river otter, beaver, muskrat, striped skunk, raccoon, opossum, weasel, mink, fisher, marten, porcupine, bobcat, black bear, red squirrel, shrews, pocket gopher, voles, bats, least chipmunk, gray squirrel, northern flying squirrel, cottontail rabbit and snowshoe hare. Reptiles and amphibians utilizing the wetland, riparian and upland habitats include the wood frog, spring peeper, western chorus frog, gray tree frog, northern leopard frog, green frog, American toad, blue-spotted salamander, tiger salamander, garter snake, redbelly snake, painted turtle, snapping turtle, and Blanding's turtle, a MN DNR Threatened Species.

A number of occurrences of the Blanding's turtle, a MN DNR Threatened Species, have been documented on the property and there have been at least two eagle nests documented in the subject area. The contiguous forest block that is provided by this property will benefit all of these species as well as other rare species that depend on forested wetland and riparian areas.

Conservation of this reach of the Mississippi River is extremely valuable in protection of water quality.

The acquired forest lands are now dual certified to the Sustainable Forestry Initiative and Forest Stewardship Council standards, ensuring a 9+ mile stretch of consistent forest management.

The land buffers and enhances two other tracts of public land, resulting in a 6,207 acre block of contiguous forest lands on the Mississippi River in the popular recreational Brainerd Lakes area of north-central Minnesota. The public has access to these waters and forest lands for fishing, hunting, snowmobiling, skiing, snow-shoeing, nature viewing, hiking, restricted camping, horseback riding and other recreational activities. The property continues to host a popular snowmobile trail, important because of its proximity just 5 miles from downtown Brainerd.

While conversion of forest lands into development properties in the Brainerd Lakes area has fragmented forests as well as these types of recreational trail systems, this acquisition will provide raw materials for the region's forest products economy which in turn provides base economy jobs for Minnesota citizens. The public has gained in a less tangible but no less important way from the protected landscape, noise buffering and air and water quality benefits provided by these forested lands.

This acquisition will provide a future opportunity to complete a critical linkage between the Cuyuna Lakes State Trail and the Paul Bunyan State Trail, both part of the Mississippi River Trail which is envisioned to be a 3,000 mile world class bicycling route, extending from the headwaters at Lake Itasca to the Gulf of Mexico.

The project had considerable support from a large and diverse collection of stakeholders including hunting and angling clubs, community foundations, natural resource organizations and trails organizations; such as Anglers for Habitat, Delta Waterfowl, Ducks Unlimited, Minnesota Deerhunters, MNDNR, Ruffed Grouse Society, The Nature Conservancy The Trust for Public Land; and more.

The Trust for Public Land provided the leadership and coordination role needed in this conservation effort. Working together with these other stakeholders, The Trust for Public Land had endeavored to protect this particular stretch of Mississippi River land now known as Mississippi River Northwoods for over a decade. No fewer than three efforts were made over the 10-year period to protect this unique property using various protection tools, funding sources, and possible stewardship scenarios. These previous efforts were not successful due to a variety of factors including insufficient funding, differences of opinion about who should be the long term steward and not reaching agreement with the landowner on the terms of a sale.

In approximately 2009, however, the long-time landowner, Potlatch Corporation, converted from a forest product company to a Real Estate Investment Trust and underwent a number of staffing changes. They increased their sale and development of land in Minnesota and in 2010 it was learned that they intended to develop the Mississippi River Northwoods parcel. After lengthy negotiations, The Trust for Public Land was able to reach an option agreement with the company for the purchase of this land for conservation in the spring of 2011. Shortly thereafter, The Trust for Public Land submitted an application for funding to LSOHC to protect this land. Originally it was thought that the DNR might be the permanent steward of this land given the importance of the land and the agency's long-time involvement with and interest in its protection. Ultimately, it was determined that Crow Wing County would be the permanent steward of this land due to a variety of factors including this land's proximity to other County-owned land. Accordingly, the County eventually became the grant applicant.

As the holder of the option agreement with Potlatch, The Trust for Public Land continued to play an active role in this protection effort. It coordinated and paid for all the due diligence on the land including environmental assessments, appraisals, and title review. The Trust for Public Land also coordinated and managed education and outreach related to this protection effort with the many and various stakeholders mentioned above. The Trust for Public Land further assisted the County in thinking about how the land would be managed with this proposed funding alongside other county-owned lands as well as the critical conversations that took place with LSOHC and the Legislature in 2011-2012 that led to ultimate appropriation of OHF dollars.

On November 29, 2012, The Trust for Public Land purchased the land from Potlatch for its appraised fair market value of \$11 million and sold the land on the same day to Crow Wing County for the same amount.

The Trust for Public Land continued to work alongside Crow Wing County, partners listed above and the LSOHC in 2012-2013 to re-introduce area residents and other stakeholders to the recently-protected and publicly-accessible Mississippi River Northwoods land through a series of written summaries, press pieces, celebrations and river outings.

The County is proposing a change in the use and interest in 142 acres of the Mississippi River Northwoods acquisition. The parcel, located along Highway 210, has economic viability and opportunity to increase the County's tax base. The County's proposal would include a land exchange and transfer of the deed restriction to another County managed property adjoining the Mississippi River and Northwoods property.

The County's proposal will meet the procedures and criteria identified by the Lessard Sams Outdoor Heritage Council for the change of use and replacement of interest. The identified properties will be equal in fair market value, in a reasonable equivalent location and have a reasonably equivalent useful conservation purpose. A copy of the fact sheet is attached to this report

The \$3M in leverage identified in Trust For Public Lands's original budget for this acquisition listed Parks and Trails Legacy and RIM as additional sources of funding. The leverage dollars were not needed or applied for because the second appraisal came in \$3M lower than the original appraisal.

### Which LSOHC state-wide priorities are addressed in this proposal:

- Produce multiple enduring conservation benefits
- Provide Minnesotans with greater public access to outdoor environments with hunting, fishing and other outdoor recreation opportunities

### Which LSOHC section priorities are addressed in this proposal:

#### Northern Forest:

- Protect shoreland and restore or enhance critical habitat on wild rice lakes, shallow lakes, cold water lakes, streams and rivers, and spawning areas
- Protect forestland through acquisition or easement to prevent parcelization and fragmentation and to provide the ability to access and manage landlocked public properties

### Relationship to other funds:

- Not Listed

### How will you sustain and/or maintain this work after the Outdoor Heritage Funds are expended:

Crow Wing County currently manages for multiple uses on approximately 105,000 acres of tax forfeited forest lands. These multiple uses include timber production, recreation, water quality and wildlife



The County manages its public forest lands to the highest environmental, social and economic standards, according to the world's two leading forest certification organizations. This recognition comes after a series of rigorous third-party audits resulting in the County receiving its dual certification for best-management forestry practices from both the Sustainable Forestry Initiative and the Forest Stewardship Council®. Sustainable forest management is about striking a balance between economic, social and environmental values in a manner that protects all of these values over time.

The County has a fiduciary responsibility to the tax forfeited trust to maximize revenues from said lands to the benefit of local taxing districts while providing multiple opportunities for diverse forest uses and protecting the long-term sustainability of the forest resource.

Crow Wing County has the available resources to effectively manage this property for many uses. The property is a natural fit since the County is managing similar lands to both the east and west. The property will be incorporated in the County's Sustainable Forestry Management System and become third party certified. By doing so, the county will ensure sustainable forestry practices are conducted for generations to come.

## Outcomes:

### Programs in the northern forest region:

- The long-term outcome, which leaves a legacy, is that not only will this serve as important habitat, but it also provides public access to our globally important Mississippi River and to forestland. Forestland provides multiple enduring conservation benefits in the face of climate change and other major stressors:
  - o healthy terrestrial and aquatic habitat for fish, game, and other wildlife species
  - o abundant access to forestlands for outdoor recreation
  - o healthy watersheds and clean water
  - o healthy, attractive, livable communities

### How will they be measured and evaluated?

They are measured and evaluated through a rigorous independent third party forest certification audit of Crow Wing County managed public lands. The audit covers over 300 different environmental principles and validates that these county forest lands are sustainably managed to provide important habitats, public access, healthy forests and clean water.

## Budget Spreadsheet

Total Amount: \$11,040,000

### Budget and Cash Leverage

BudgetName	Request	Spent	Cash Leverage (anticipated)	Cash Leverage (received)	Leverage Source	Total (original)	Total (final)
Personnel	\$0	\$0	\$0	\$0		\$0	\$0
Contracts	\$0	\$0	\$0	\$0		\$0	\$0
Fee Acquisition w/ PILT	\$11,000,000	\$0	\$3,000,000	\$0	P&T Legacy grant, RIM	\$14,000,000	\$0
Fee Acquisition w/o PILT	\$0	\$11,000,000	\$0	\$0		\$0	\$11,000,000
Easement Acquisition	\$0	\$0	\$0	\$0		\$0	\$0
Easement Stewardship	\$0	\$0	\$0	\$0		\$0	\$0
Travel	\$0	\$0	\$0	\$0		\$0	\$0
Professional Services	\$0	\$39,600	\$0	\$0		\$0	\$39,600
Direct Support Services	\$0	\$0	\$0	\$0		\$0	\$0
DNR Land Acquisition Costs	\$40,000	\$0	\$0	\$0		\$40,000	\$0
Capital Equipment	\$0	\$0	\$0	\$0		\$0	\$0
Other Equipment/Tools	\$0	\$0	\$0	\$0		\$0	\$0
Supplies/Materials	\$0	\$0	\$0	\$0		\$0	\$0
DNR IDP	\$0	\$0	\$0	\$0		\$0	\$0
Total	\$11,040,000	\$11,039,600	\$3,000,000	\$0		\$14,040,000	\$11,039,600

## Output Tables

**Table 1a. Acres by Resource Type**

Type	Wetlands (original)	Wetlands (final)	Prairies (original)	Prairies (final)	Forest (original)	Forest (final)	Habitats (original)	Habitats (final)	Total (original)	Total (final)
Restore	0	0	0	0	0	0	100	0	100	0
Protect in Fee with State PILT Liability	0	0	0	0	0	0	1,783	0	1,783	0
Protect in Fee W/O State PILT Liability	0	0	0	0	0	1,883	0	0	0	1,883
Protect in Easement	0	0	0	0	0	0	0	0	0	0
Enhance	0	0	0	0	0	0	0	0	0	0
Total	0	0	0	0	0	1,883	1,883	0	1,883	1,883

**Table 2. Total Requested Funding by Resource Type**

Type	Wetlands (original)	Wetlands (final)	Prairies (original)	Prairies (final)	Forest (original)	Forest (final)	Habitats (original)	Habitats (final)	Total (original)	Total (final)
Restore	\$0	\$0	\$0	\$0	\$0	\$0	\$500,000	\$0	\$500,000	\$0
Protect in Fee with State PILT Liability	\$0	\$0	\$0	\$0	\$0	\$0	\$13,540,000	\$0	\$13,540,000	\$0
Protect in Fee W/O State PILT Liability	\$0	\$0	\$0	\$0	\$0	\$11,039,600	\$0	\$0	\$0	\$11,039,600
Protect in Easement	\$0	\$0	\$0	\$0	\$0	\$0	\$0	\$0	\$0	\$0
Enhance	\$0	\$0	\$0	\$0	\$0	\$0	\$0	\$0	\$0	\$0
Total	\$0	\$0	\$0	\$0	\$0	\$11,039,600	\$14,040,000	\$0	\$14,040,000	\$11,039,600

**Table 3. Acres within each Ecological Section**

Type	Metro Urban (original)	Metro Urban (final)	ForestPrairie (original)	Forest Prairie (final)	SEForest (original)	SEForest (final)	Prairie (original)	Prairie (final)	N Forest (original)	N Forest (final)	Total (original)	Total (final)
Restore	0	0	0	0	0	0	0	0	100	0	100	0
Protect in Fee with State PILT Liability	0	0	0	0	0	0	0	0	1,783	0	1,783	0
Protect in Fee W/O State PILT Liability	0	0	0	0	0	0	0	0	0	1,883	0	1,883
Protect in Easement	0	0	0	0	0	0	0	0	0	0	0	0
Enhance	0	0	0	0	0	0	0	0	0	0	0	0
Total	0	0	0	0	0	0	0	0	1,883	1,883	1,883	1,883

**Table 4. Total Requested Funding within each Ecological Section**

Type	Metro Urban (original)	Metro Urban (final)	Forest Prairie (original)	Forest Prairie (final)	SEForest (original)	SE Forest (final)	Prairie (original)	Prairie (final)	N Forest (original)	N Forest (final)	Total (original)	Total (final)
Restore	\$0	\$0	\$0	\$0	\$0	\$0	\$0	\$0	\$500,000	\$0	\$500,000	\$0
Protect in Fee with State PILT Liability	\$0	\$0	\$0	\$0	\$0	\$0	\$0	\$0	\$13,540,000	\$0	\$13,540,000	\$0
Protect in Fee W/O State PILT Liability	\$0	\$0	\$0	\$0	\$0	\$0	\$0	\$0	\$0	\$11,039,600	\$0	\$11,039,600
Protect in Easement	\$0	\$0	\$0	\$0	\$0	\$0	\$0	\$0	\$0	\$0	\$0	\$0
Enhance	\$0	\$0	\$0	\$0	\$0	\$0	\$0	\$0	\$0	\$0	\$0	\$0
Total	\$0	\$0	\$0	\$0	\$0	\$0	\$0	\$0	\$14,040,000	\$11,039,600	\$14,040,000	\$11,039,600

**Target Lake/Stream/River Feet or Miles (original)**

0

**Target Lake/Stream/River Feet or Miles (final)**

2.7 miles Mississippi River

## Parcel List

### Section 1 - Restore / Enhance Parcel List

No parcels with an activity type restore or enhance.

### Section 2 - Protect Parcel List

Crow Wing

Name	TRDS	Acres	Est Cost	Existing Protection?	Hunting?	Fishing?
Mississippi River Northwoods	04630223	42	\$237,800	No	Full	Full
Mississippi River Northwoods	04630226	371	\$2,193,700	No	Full	Full
Mississippi River Northwoods	04630227	211	\$1,153,300	No	Full	Full
Mississippi River Northwoods	04630233	126	\$743,100	No	Full	Full
Mississippi River Northwoods	04630234	583	\$3,454,100	No	Full	Full
Mississippi River Northwoods	04630235	550	\$3,257,900	No	Full	Full

### Section 2a - Protect Parcel with Bldgs

No parcels with an activity type protect and has buildings.

### Section 3 - Other Parcel Activity

No parcels with an other activity type.

## Completed Parcel: Mississippi River Northwoods

# of Total Acres:	42
County:	CrowWing
Township:	046
Range:	30
Direction:	2
Section:	23
# of Acres: Wetlands/Upland:	0
# of Acres: Forest:	42
# of Acres: Prairie/Grassland:	0
Amount of Shoreline:	3395 (Linear Feet)
Name of Adjacent Body of Water (if applicable):	Mississippi River
Has there been signage erected at the site:	Yes
Annual Reporting Organization Name:	CrowWing County Land Supervisor
Annual Reporting Manager Name:	Kirk Titus
Annual Reporting Address:	322 Laurel St. Suite 12
Annual Reporting City:	Brainerd
Annual Reporting State:	MN
Annual Reporting Zip:	56401
Annual Reporting Email:	kirk.titus@crowwing.us
Annual Reporting Phone:	218-824-1138
Purchase Date:	November 29, 2012
Acquisition Title:	
Purchase Price:	\$237,800
Appraised Value:	\$237,800
Professional Service Costs:	\$6,600
Assessed Value:	\$220,900
Total Project Cost:	\$237,800
Fees Received:	\$0
Donations:	\$0
Related Parties:	
Property Managed By:	Local Unit of Government -
Name of the unit area or location government unit or land manager:	CrowWing County Land Services

## Completed Parcel: Mississippi River Northwoods

# of Total Acres:	371
County:	CrowWing
Township:	046
Range:	30
Direction:	2
Section:	26
# of Acres: Wetlands/Upland:	8
# of Acres: Forest:	363
# of Acres: Prairie/Grassland:	0
Amount of Shoreline:	5500 (Linear Feet)
Name of Adjacent Body of Water (if applicable):	Mississippi River
Has there been signage erected at the site:	Yes
Annual Reporting Organization Name:	CrowWing County Land Supervisor
Annual Reporting Manager Name:	Kirk Titus
Annual Reporting Address:	322 Laurel St. Suite 12
Annual Reporting City:	Brainerd
Annual Reporting State:	MN
Annual Reporting Zip:	56401
Annual Reporting Email:	kirk.titus@crowwing.us
Annual Reporting Phone:	218-824-1138
Purchase Date:	November 29, 2012
Acquisition Title:	
Purchase Price:	\$2,193,700
Appraised Value:	\$2,193,700
Professional Service Costs:	\$6,600
Assessed Value:	\$540,400
Total Project Cost:	\$2,193,700
Fees Received:	\$0
Donations:	\$0
Related Parties:	
Property Managed By:	Local Unit of Government -
Name of the unit area or location government unit or land manager:	CrowWing County Land Services

## Completed Parcel: Mississippi River Northwoods

# of Total Acres:	550
County:	Crow Wing
Township:	046
Range:	30
Direction:	2
Section:	35
# of Acres: Wetlands/Upland:	42
# of Acres: Forest:	508
# of Acres: Prairie/Grassland:	0
Amount of Shoreline:	0 (Linear Feet)
Name of Adjacent Body of Water (if applicable):	N/A
Has there been signage erected at the site:	Yes
Annual Reporting Organization Name:	Crow Wing County Land Supervisor
Annual Reporting Manager Name:	Kirk Titus
Annual Reporting Address:	322 Laurel St. Suite 12
Annual Reporting City:	Brainerd
Annual Reporting State:	MN
Annual Reporting Zip:	56401
Annual Reporting Email:	kirk.titus@crowwing.us
Annual Reporting Phone:	218-824-1138
Purchase Date:	November 29, 2012
Acquisition Title:	
Purchase Price:	\$3,257,899
Appraised Value:	\$3,257,899
Professional Service Costs:	\$6,600
Assessed Value:	\$727,000
Total Project Cost:	\$3,257,899
Fees Received:	\$0
Donations:	\$0
Related Parties:	
Property Managed By:	Local Unit of Government -
Name of the unit area or location government unit or land manager:	Crow Wing County Land Services



## Completed Parcel: Mississippi River Northwoods

# of Total Acres:	211
County:	CrowWing
Township:	046
Range:	30
Direction:	2
Section:	27
# of Acres: Wetlands/Upland:	48
# of Acres: Forest:	163
# of Acres: Prairie/Grassland:	0
Amount of Shoreline:	8049 (Linear Feet)
Name of Adjacent Body of Water (if applicable):	Mississippi River
Has there been signage erected at the site:	Yes
Annual Reporting Organization Name:	CrowWing County Land Supervisor
Annual Reporting Manager Name:	Kirk Titus
Annual Reporting Address:	322 Laurel St, Suite 12
Annual Reporting City:	Brainerd
Annual Reporting State:	MN
Annual Reporting Zip:	56401
Annual Reporting Email:	kirk.titus@crowwing.us
Annual Reporting Phone:	218-824-1138
Purchase Date:	November 28, 2012
Acquisition Title:	
Purchase Price:	\$1,153,300
Appraised Value:	\$1,153,300
Professional Service Costs:	\$6,600
Assessed Value:	\$377,800
Total Project Cost:	\$1,153,300
Fees Received:	\$0
Donations:	\$0
Related Parties:	
Property Managed By:	Local Unit of Government -
Name of the unit area or location government unit or land manager:	CrowWing County Land Services

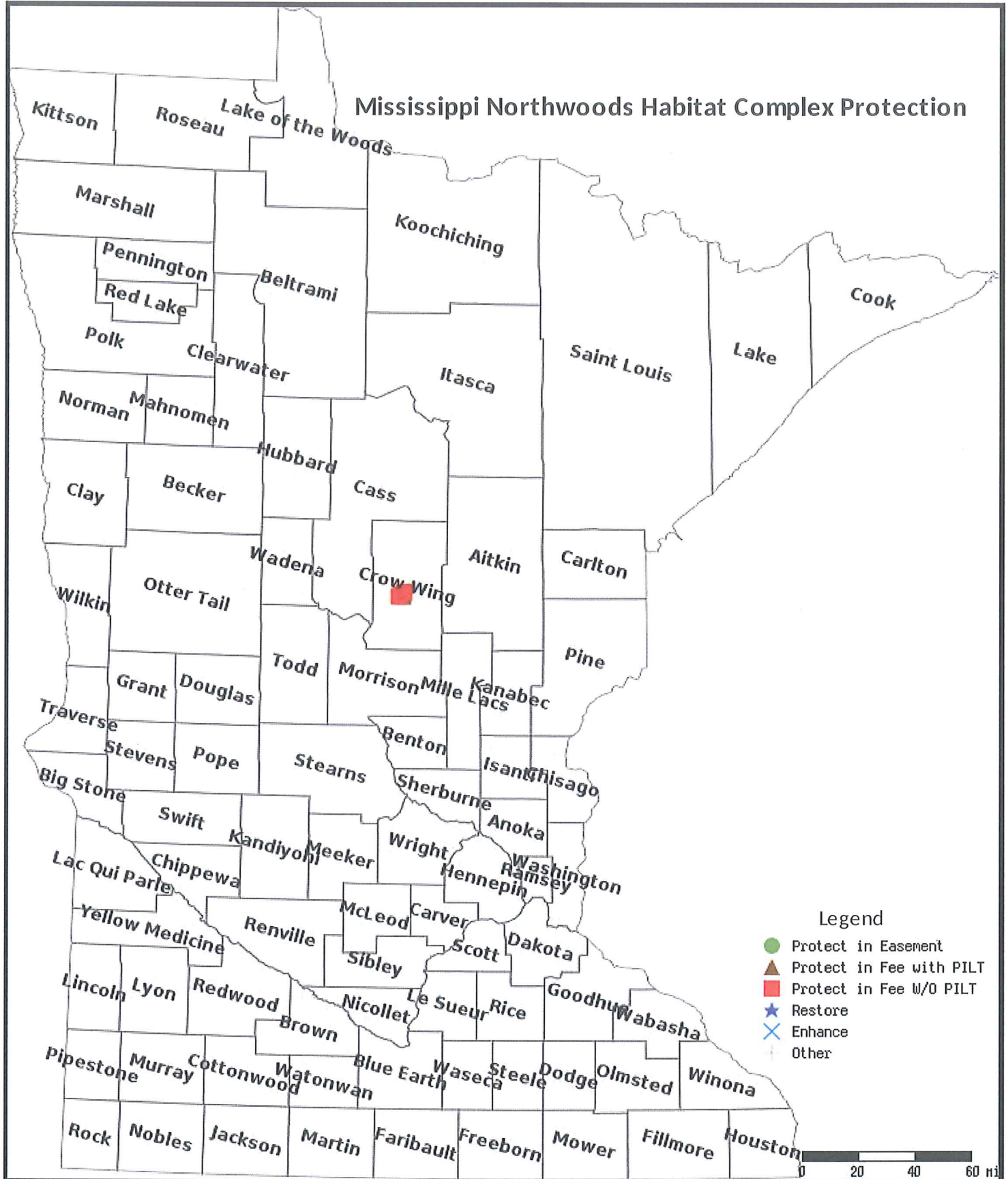
## Completed Parcel: Mississippi River Northwoods

# of Total Acres:	583
County:	Crow Wing
Township:	046
Range:	30
Direction:	2
Section:	34
# of Acres: Wetlands/Upland:	56
# of Acres: Forest:	527
# of Acres: Prairie/Grassland:	0
Amount of Shoreline:	1340 (Linear Feet)
Name of Adjacent Body of Water (if applicable):	Sand Creek
Has there been signage erected at the site:	Yes
Annual Reporting Organization Name:	Crow Wing County Land Supervisor
Annual Reporting Manager Name:	Kirk Titus
Annual Reporting Address:	322 Laurel St. Suite 12
Annual Reporting City:	Brainerd
Annual Reporting State:	MN
Annual Reporting Zip:	56401
Annual Reporting Email:	kirk.titus@crowwing.us
Annual Reporting Phone:	218-824-1138
Purchase Date:	November 29, 2012
Acquisition Title:	
Purchase Price:	\$3,454,100
Appraised Value:	\$3,454,100
Professional Service Costs:	\$6,600
Assessed Value:	\$758,000
Total Project Cost:	\$3,454,100
Fees Received:	\$0
Donations:	\$0
Related Parties:	
Property Managed By:	Local Unit of Government -
Name of the unit area or location government unit or land manager:	Crow Wing County Land Services

## Completed Parcel: Mississippi River Northwoods

# of Total Acres:	126
County:	CrowWing
Township:	046
Range:	30
Direction:	2
Section:	33
# of Acres: Wetlands/Upland:	3
# of Acres: Forest:	123
# of Acres: Prairie/Grassland:	0
Amount of Shoreline:	5021 (Linear Feet)
Name of Adjacent Body of Water (if applicable):	Unnamed Lake 18-146 P
Has there been signage erected at the site:	Yes
Annual Reporting Organization Name:	CrowWing County Land Supervisor
Annual Reporting Manager Name:	Kirk Titus
Annual Reporting Address:	322 Laurel St. Suite 12
Annual Reporting City:	Brainerd
Annual Reporting State:	MN
Annual Reporting Zip:	56401
Annual Reporting Email:	kirk.titus@crowwing.us
Annual Reporting Phone:	218-824-1138
Purchase Date:	November 29, 2012
Acquisition Title:	
Purchase Price:	\$743,100
Appraised Value:	\$743,100
Professional Service Costs:	\$6,600
Assessed Value:	\$178,400
Total Project Cost:	\$743,100
Fees Received:	\$0
Donations:	\$0
Related Parties:	
Property Managed By:	Local Unit of Government -
Name of the unit area or location government unit or land manager:	CrowWing County Land Services

# Parcel Map



Data Generated From Parcel List