



DNR State Lands Overview – Strategic Land Asset Management

Trina Zieman – Land Asset and School Trust Administrator, MN DNR

April 28, 2017

Department of Natural Resources Mission Statement

We work with citizens of Minnesota to:

- Conserve and manage the state's natural resources
- Provide outdoor recreation opportunities
- Provide for commercial uses of natural resources

In ways that create a sustainable quality of life.

Conservation Mission Supported by Public Land Base

Land Types and Acres

| | |
|---|----------------------|
| School Trust (includes School, Indemnity, Swamp, and Internal Improvement land) | 2.5 million |
| Tax Forfeited | 2.8 million |
| Consolidated Conservation (ConCon) | 1.55 million |
| Acquired | 1.58 million |
| Volstead | 33.2 thousand |
| University Trust | 25.8 thousand |

| | |
|--------------------------------|-------------------------|
| Total DNR managed lands | > 5.7 million |
| Total county managed | >2.8 million |

Land Classifications

- **School and Indemnity School Lands**

- Enabling Act of 1857: Sections 16 and 36 of every township dedicated for “use of schools.” If the land was not available, alternative (indemnity) lands were selected.

- **Swamp Lands (School Lands)**

- 1860: congressional grant of swamp and overflow waters. Minnesota identified lands by plat and field notes of government surveys.

- **Internal Improvement Lands (School Lands)**

- 1866: additional acres granted for internal improvements

- **University Lands**

- Enabling Act of 1857: Congress provided for 72 sections of land for “use and support of a state university.”

Land Classifications (*cont.*)

- **Consolidation Conservation Lands**

- Forfeited for non-payment of taxes related to ditch assessments in identified areas in seven counties (Aitkin, Beltrami, Koochiching, Lake of the Woods, Roseau, Mahnommen and Marshall counties).

- **Volstead Lands**

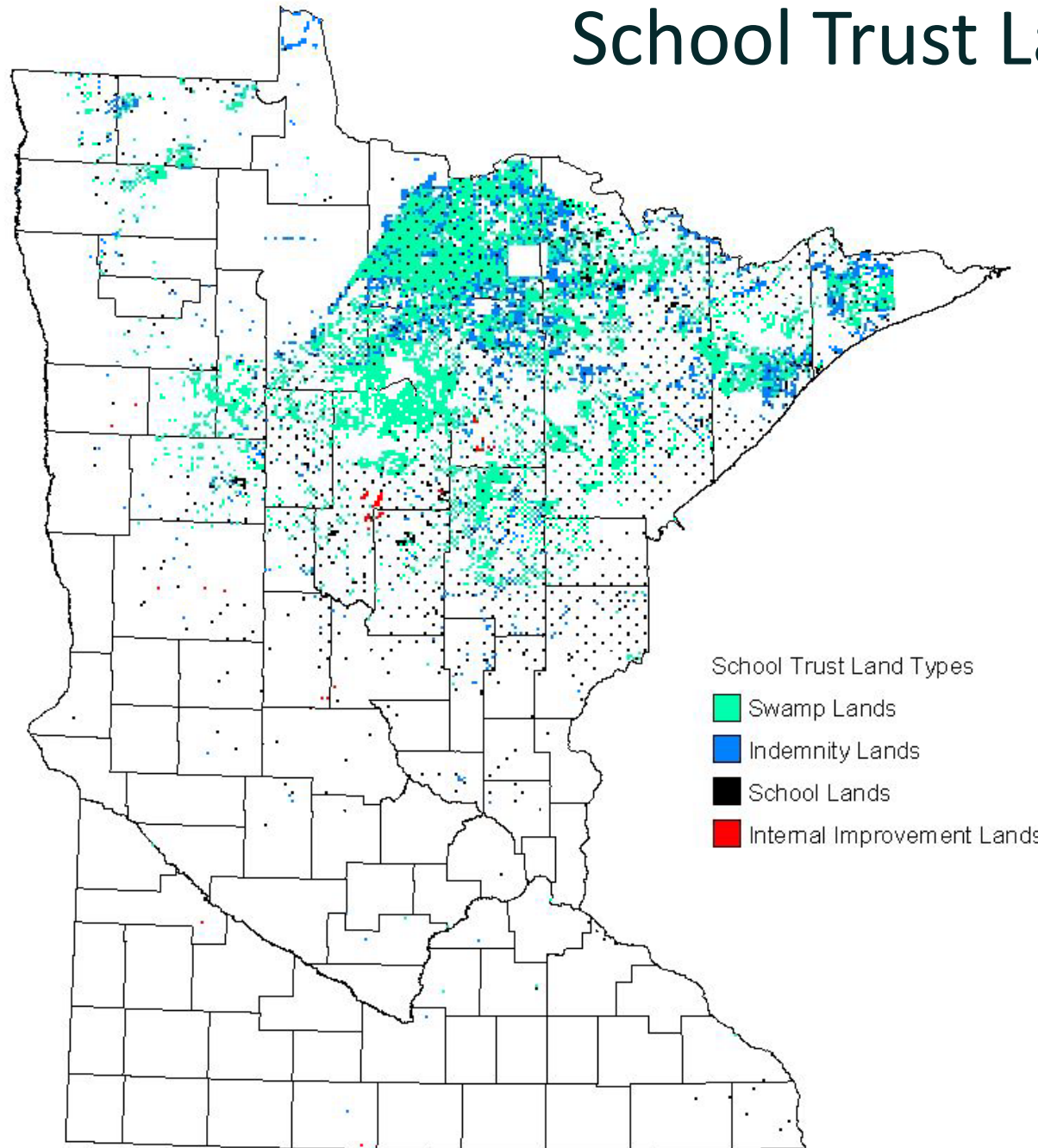
- The Federal government authorized the assessment of ditch costs for some unsold federal lands within drainage ditches.

- **Tax Forfeited Lands**

- Failure to pay general real property taxes results in forfeiture of ownership of property to state. Title held by State in trust for taxing districts; Counties manage surface and DNR manages mineral rights.

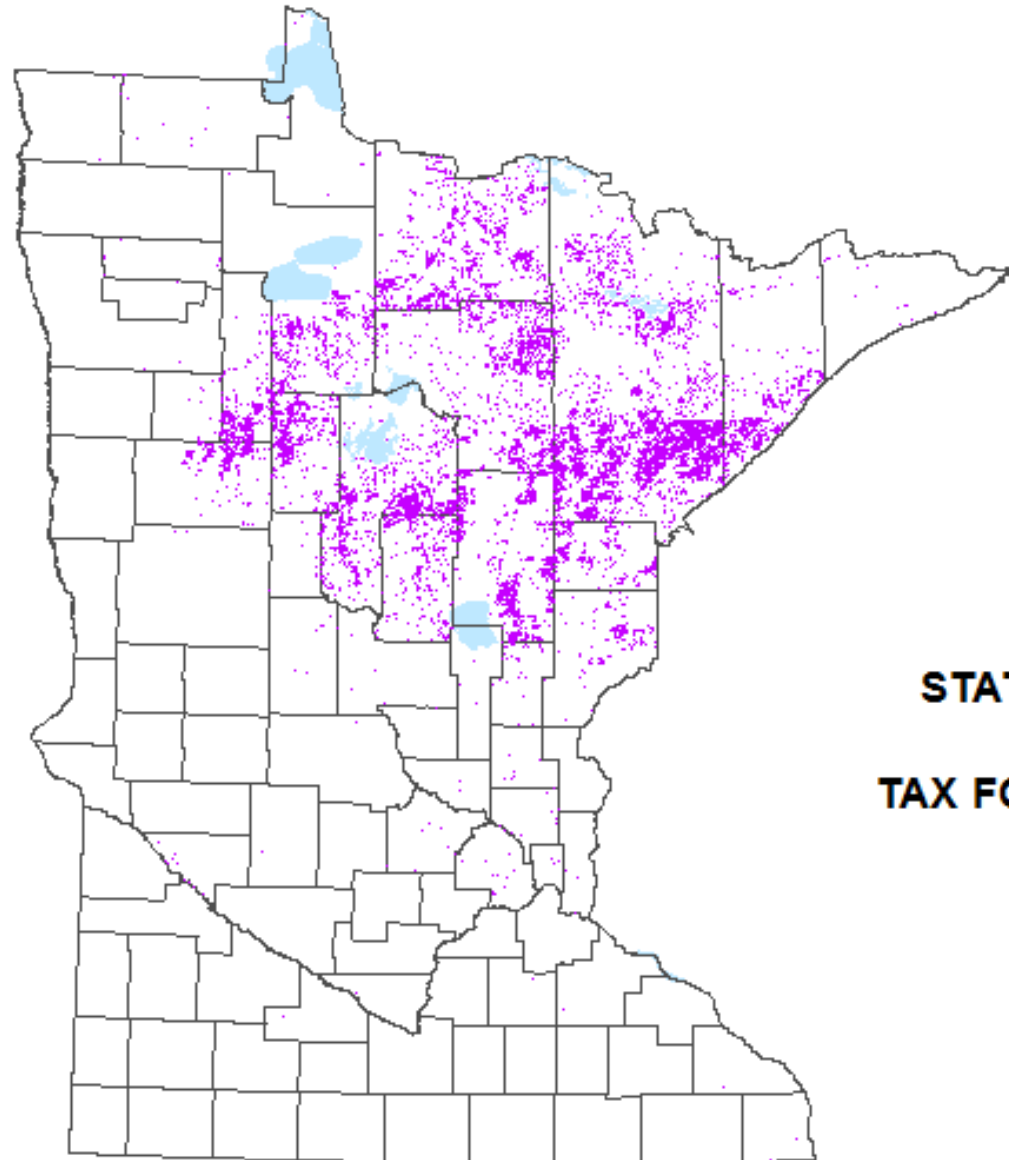
School Trust Lands

2.5 million acres



Tax Forfeited Lands

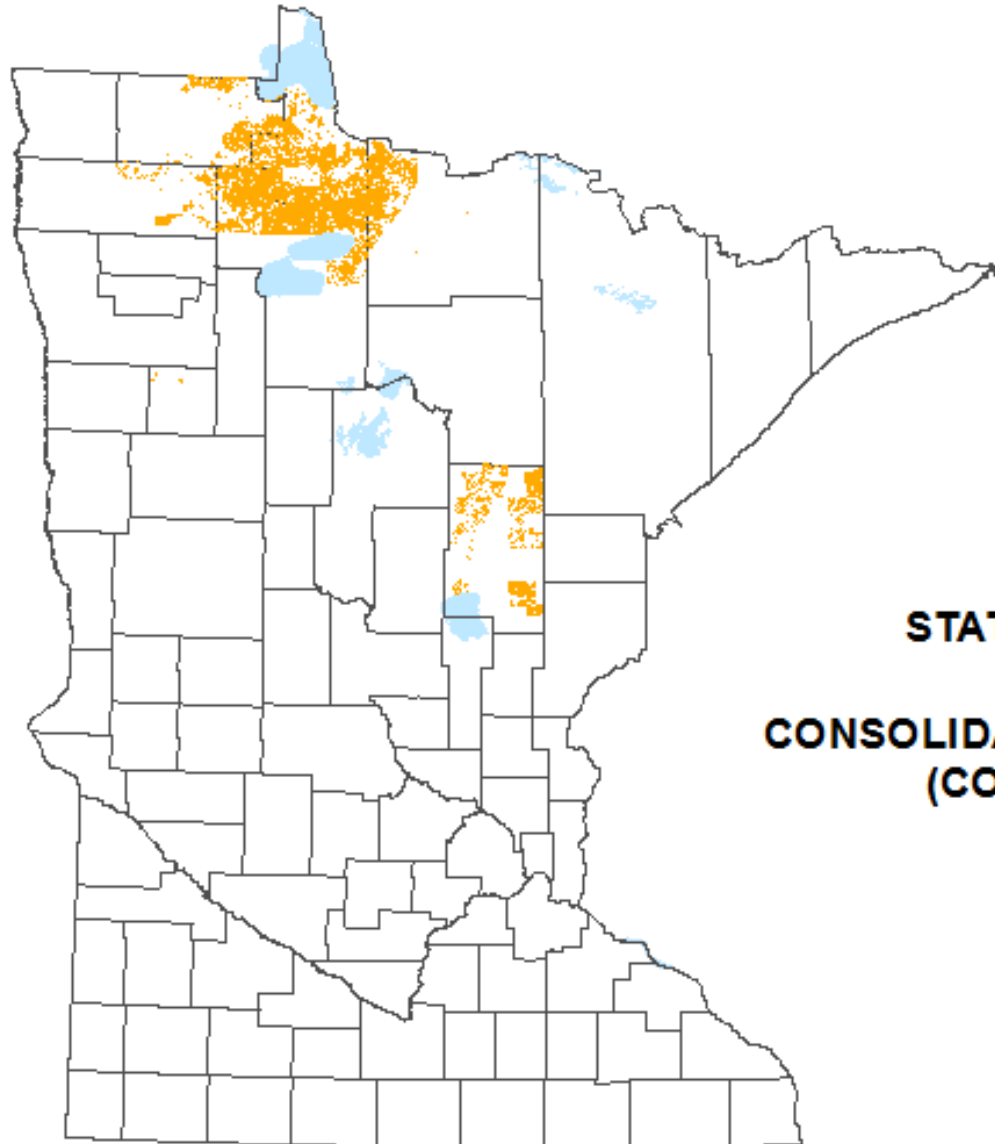
2.8 million acres



STATE OWNERSHIP
TAX FORFEITED LANDS

Consolidated Conservation Area Lands

1.55 million acres

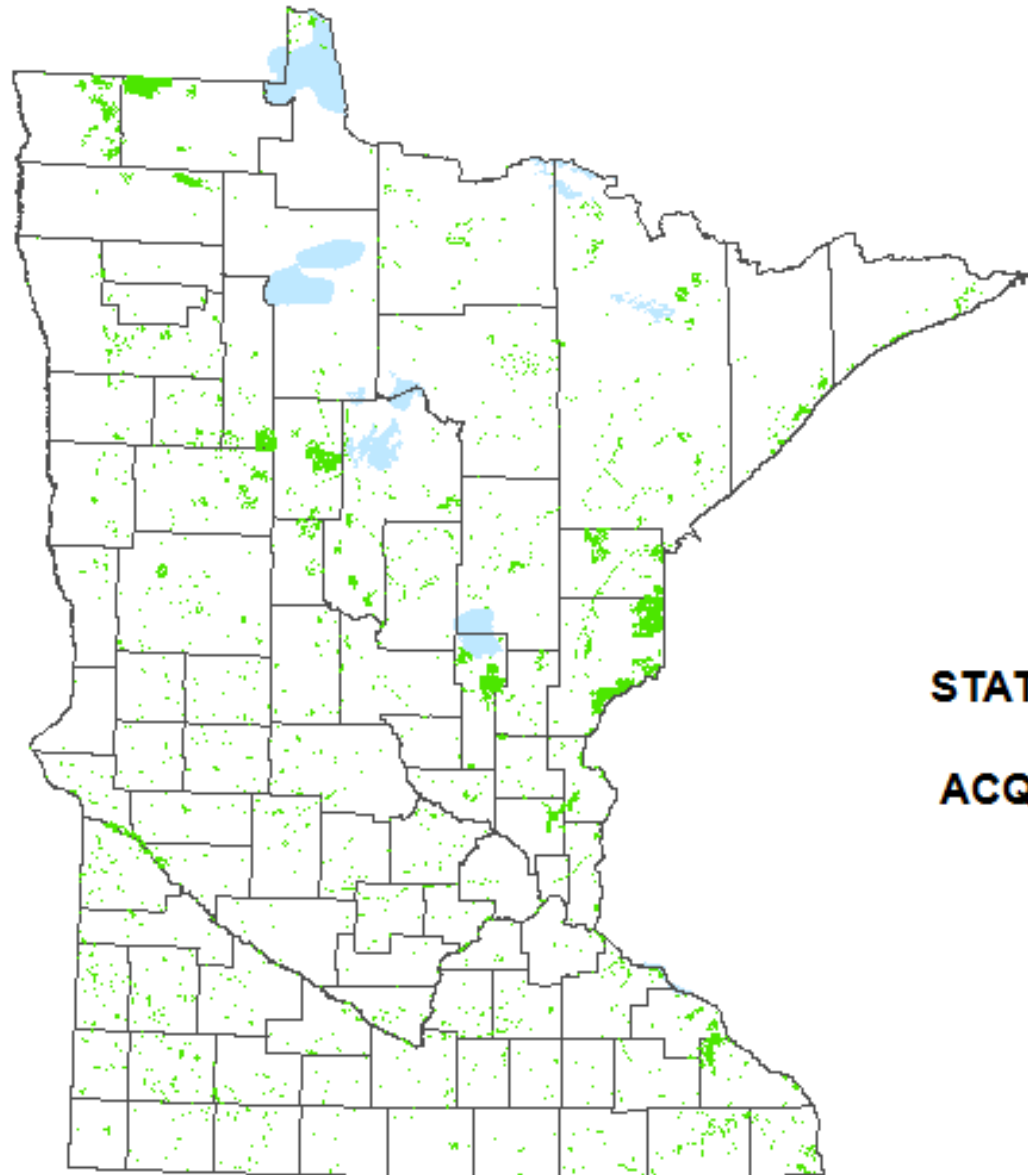


STATE OWNERSHIP

**CONSOLIDATED CONSERVATION
(CONCON) LANDS**

DNR Acquired Lands

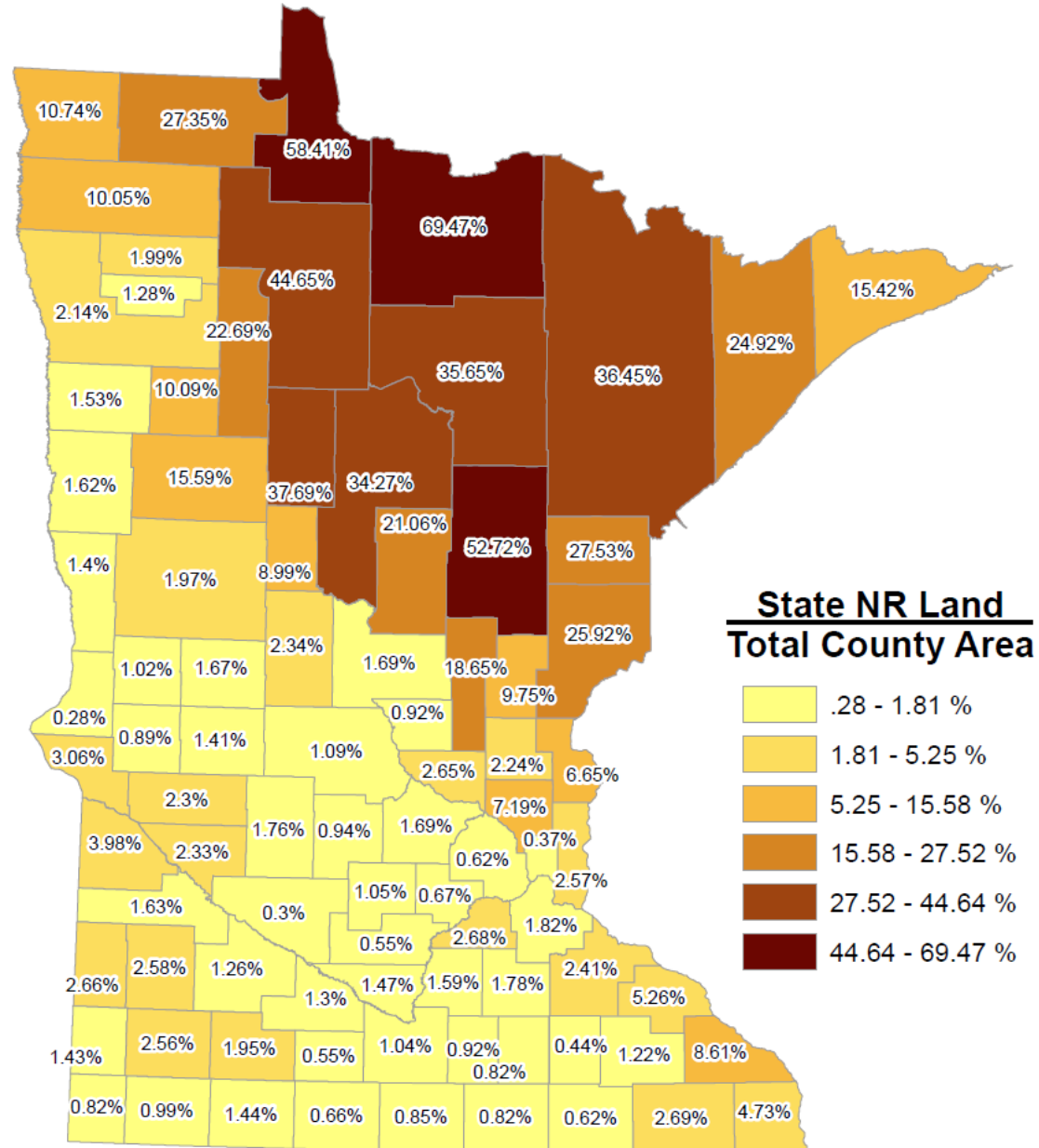
1.58 million acres



STATE OWNERSHIP

ACQUIRED LANDS

State Natural Resource (NR) Land vs. Total Land Area in County



Strategic Land Asset Management

What is Strategic Land Asset Management (SLAM)?

- An interdisciplinary program working to upgrade DNR's land asset portfolio through strategic acquisition, sales, reinvestment and exchange.
- An umbrella under which DNR's land asset portfolio is optimized for use within the context of all Minnesota's public lands.
- A standard decision making framework by which these land assets are managed.
- Focuses on collaboration: between DNR staff, between state and other public land managers, and with the public.

DNR's Objectives

Strategic Land Asset Management



Improve departmental decision making related to land asset management.

Establish decision-making frameworks that ensure consistency in decision-making and improve collaboration with others – at the county, watershed or regional level.

Improve land asset management policies and processes.

Develop and implement changes to policies and procedures that hinder the efficient management of the state's land assets.

Improve management and administration of land assets.

Recommend changes to land asset management that optimize conservation outcomes and provide for ease in administration of these assets.

DNR's Commitment Strategic Land Asset Management

The DNR is committed to continuously evaluating the public land portfolio to ensure our land base meets our mission and the needs of Minnesota citizens.

This work is accomplished through the SLAM framework, structured department processes, SLAM goals, and DNR land programs.

- Land Acquisition Program
 - [DNR Land Acquisition Web Page](#)
- Land Exchange Program
 - [DNR Land Exchange Web Page](#)
- Land Sales Program
 - [DNR Land Sale Web Page](#)

DNR's Priorities

Strategic Land Asset Management



In addition to DNR's priorities for strategic acquisition, we work with 3rd party partners throughout the state and balance their priorities with our area, regional, program, divisional, and statewide priorities for strategic land acquisition.

In addition to the requirement of a well vetted statewide prioritization process, additional criteria for approval of a project through SLAM is identified funding and a willing seller.

What are the goals of Strategic Land Asset Management (SLAM)?

- Protection of significant natural resources (such as rare resources, groundwater resources, habitats)
- Targeted conservation of MN's prairie-grasslands
- Consolidation of land ownership, creating larger, contiguous blocks of lands
- Improve access to state land
- More close to home outdoor recreational opportunities
- Meet our fiduciary responsibilities on school trust lands

Protection of Significant Natural Resources



MN DNR Protection Actions

- Improve ground water management
- Conserve prairies, grasslands and wetlands
- Prevent and curb the spread of invasive species
- Monitor natural lands, waters and species

*MN DNR's 10-Year Strategic Plan Goal 1:
Natural Resource Conservation*



Accelerate and Target Prairie Landscape Conservation



Protecting grassland and wetland habitat is one of the most critical environmental challenges facing Minnesota. The Minnesota Prairie Conservation Plan is a blueprint that focuses efforts for these resources and demonstrates unprecedented cooperation between federal agencies, state agencies and the state's most active conservation organizations.

Minnesota Prairie Conservation Plan:



Consolidation of Land Ownership



The DNR recognizes the increasing need to better prioritize land asset management actions with the department in order to achieve its mission to work with citizens to conserve and manage the state's natural resources in a way that creates a sustainable quality of life. The DNR offers a variety of assistance programs that help this effort.

Assistance Programs:



Improved Access to Existing Land Holdings



Minnesota DNR Administers

- 66 state parks
- 1,300,000 wildlife management area acres
- 185,000 scientific and natural area acres
- 45,000 aquatic management area acres
- 5,000,000 acres of DNR-administered land with forest certification

Destination Opportunities:



More Outdoor Recreational Opportunities



To meet the needs of new and existing outdoor recreation participants, the DNR set goals to adjust to the changing ways Minnesotans want to interact with natural resources, to develop and promote programs, to leverage outreach by engaging partners in outdoor recreation, and to maintain, enhance, or repurpose infrastructure.

*MN DNR's 10-Year Strategic Plan Goal 2:
Outdoor Recreation*



Fulfill Fiduciary Obligation to the Trust



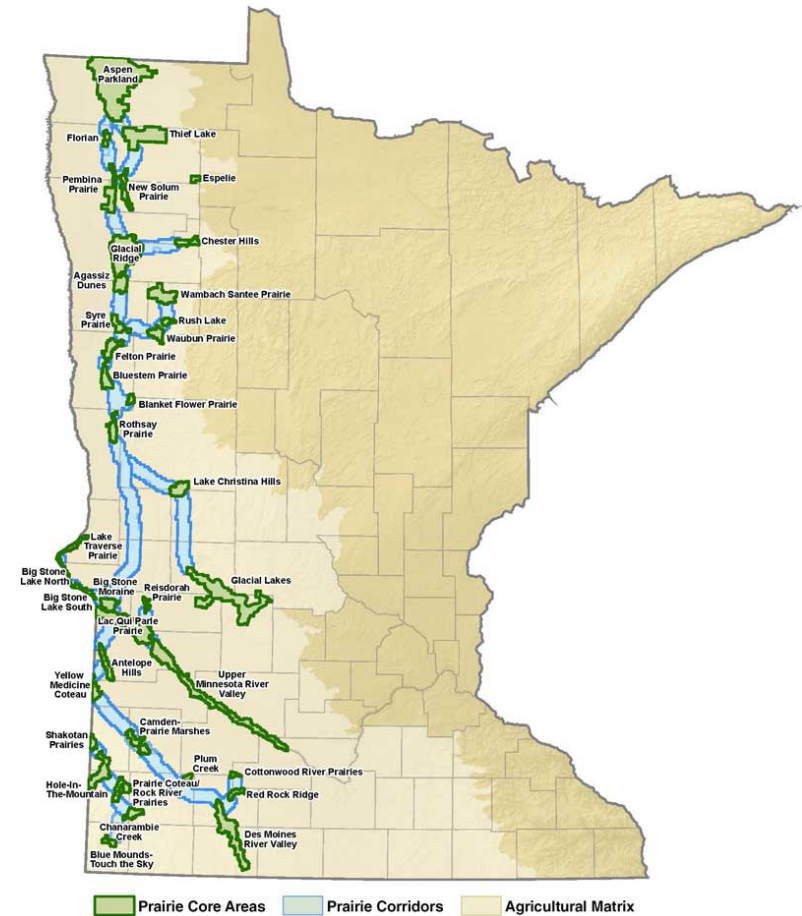
State law provides that it is the goal of the permanent school fund to secure the maximum long-term economic return from the school trust lands consistent with the fiduciary responsibilities imposed by the trust relationship established in the Minnesota Constitution (MN Statute, Sec 127A.31)

***MN DNR's 10-Year Strategic Plan Goal 3:
Natural Resources Economy***

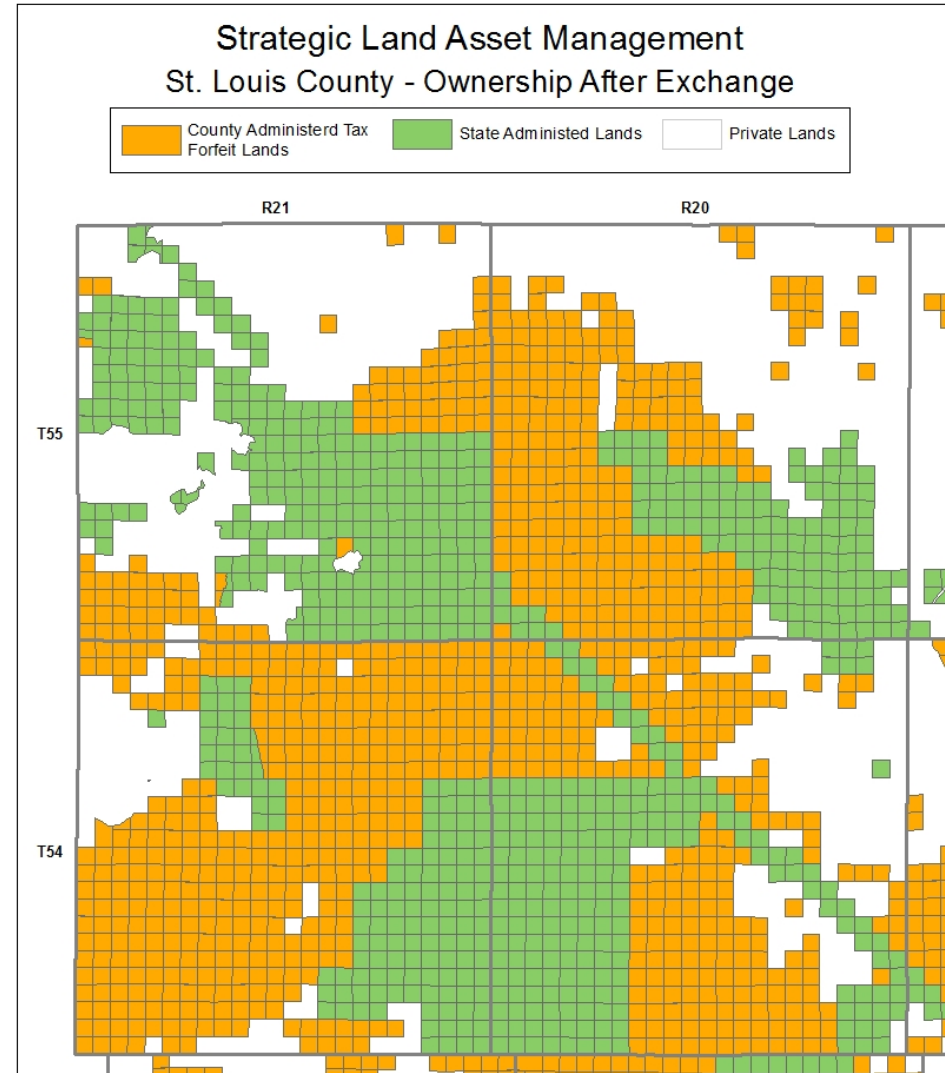
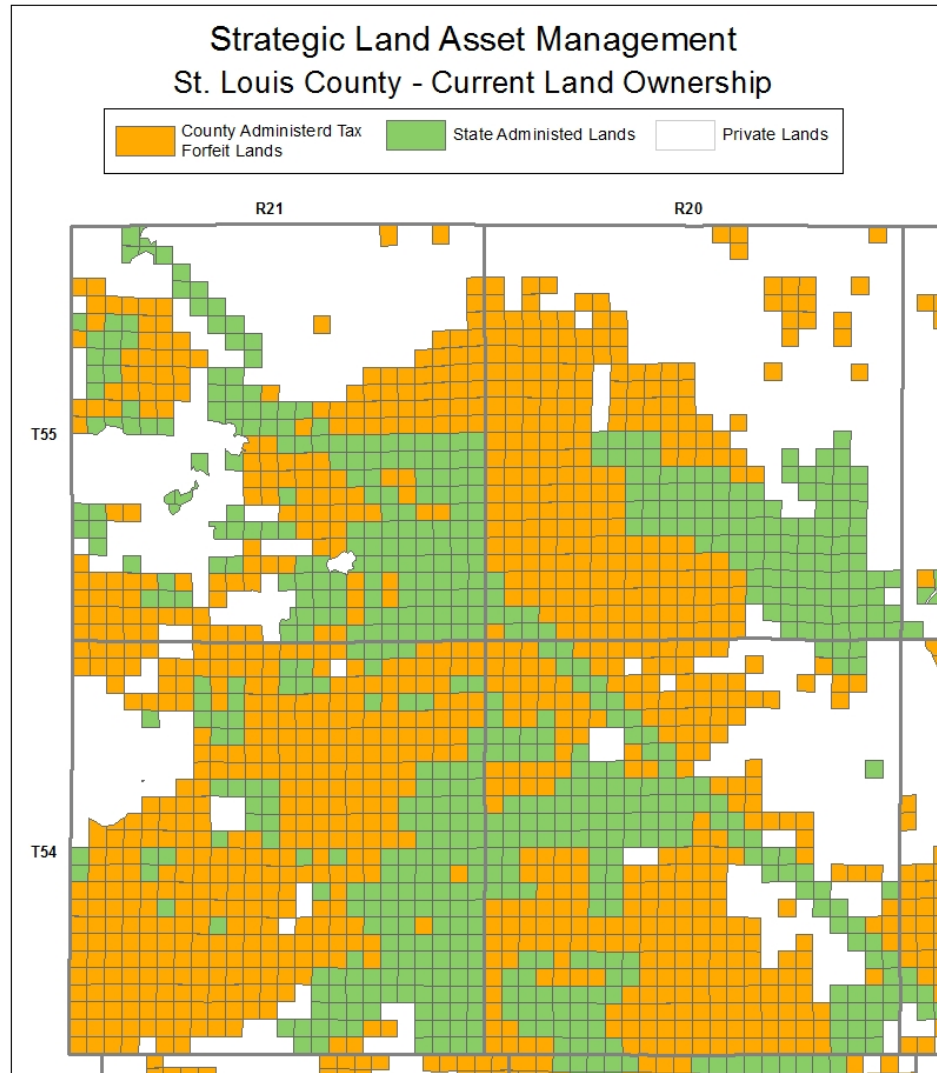


Strategic Acquisition Program

- Minnesota Prairie Conservation Plan
(www.dnr.state.mn.us/prairieplan/index.html)
- Pheasant Plan
(www.dnr.state.mn.us/pheasantaction/index.html)
- Fish Habitat Plan
(http://files.dnr.state.mn.us/fish_wildlife/fisheries/habitat/2013_fishhabitatplan.pdf)
- WMA and AMA Plans, other plans
(see www.dnr.state.mn.us/strategies/index.html)
- Willing Sellers
- County Board Communication & Outreach

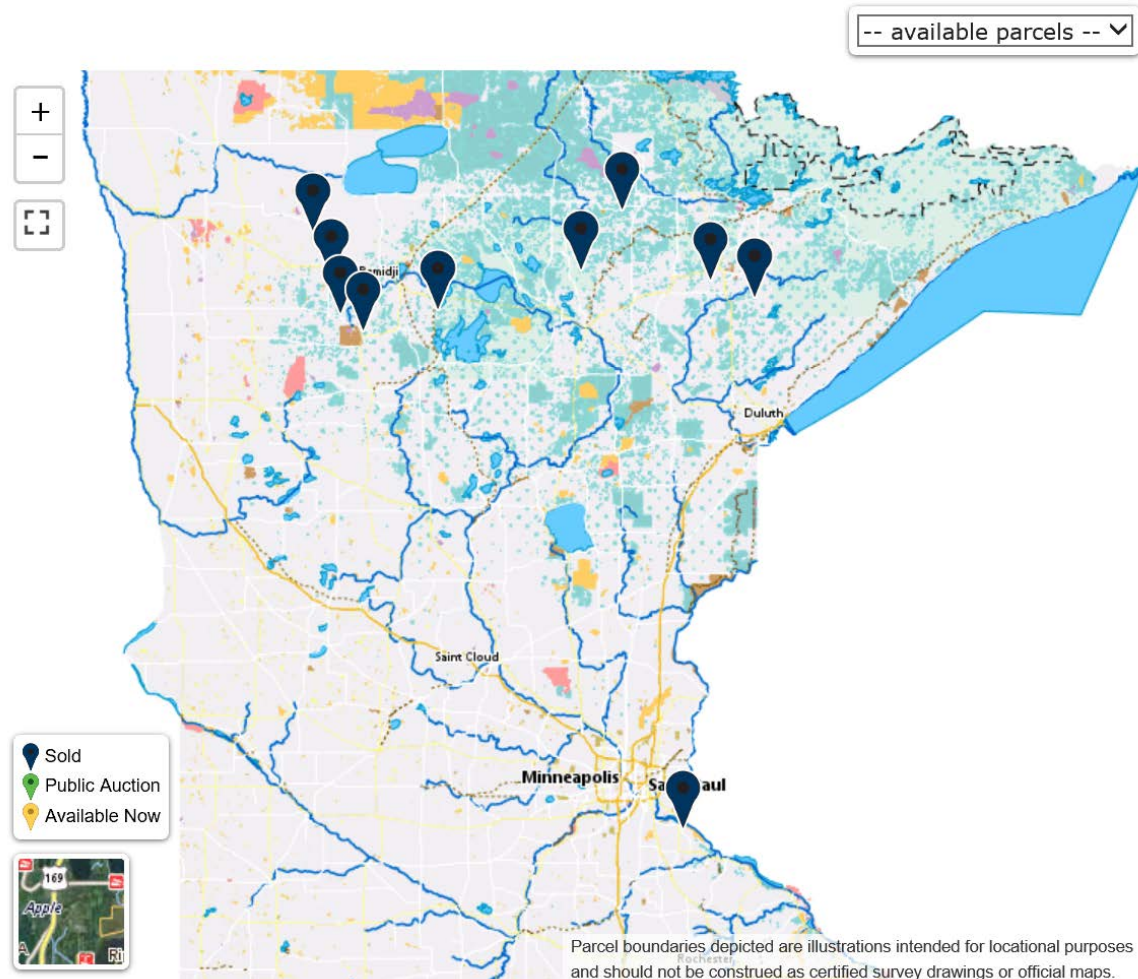


Land Exchange Program



Land Sale Program

Land Sale Map



- A fundamental principal of SLAM is to move toward more deliberate acquisitions of public lands.
- Another principal is to accelerate land sales to improve the public land portfolio.
- Strategic sales may also have the added benefit to potentially fund priority acquisitions and allow for acquisition in counties concerned with additional public land.

DNR & County SLAM Projects

- Northwest Region
 - ✓ Roseau County (PILOT)
 - ✓ Mahnomen County
- Central Region
 - ✓ Kanabec County
 - ✓ North Metro Trust Project
- Northeast Region
 - ✓ Lake County
 - ✓ South St. Louis County
- Southern Region
 - ✓ Renville and Redwood
 - ✓ Regional Trust Project

A Better Way to do Business

Strategic land asset management is a better way of doing business for DNR. It is complex, with many moving parts and we strive to continuously improve and to be the best.

DNR is open to working with anyone that has great ideas towards continuous improvement and innovation.

- Innovation is the key
 - Innovation means coming up with new ways of doing things
 - Everyone can innovate
 - Increases likelihood of success
- Steps toward innovation
 - Consult for ideas on continuous process improvement
 - Seek advice from available resources
 - Be open to new ideas and adaptive to change



Questions?

Trina Zieman – Land Asset and School Trust Administrator, MN DNR
651-259-5411 or trina.zieman@state.mn.us