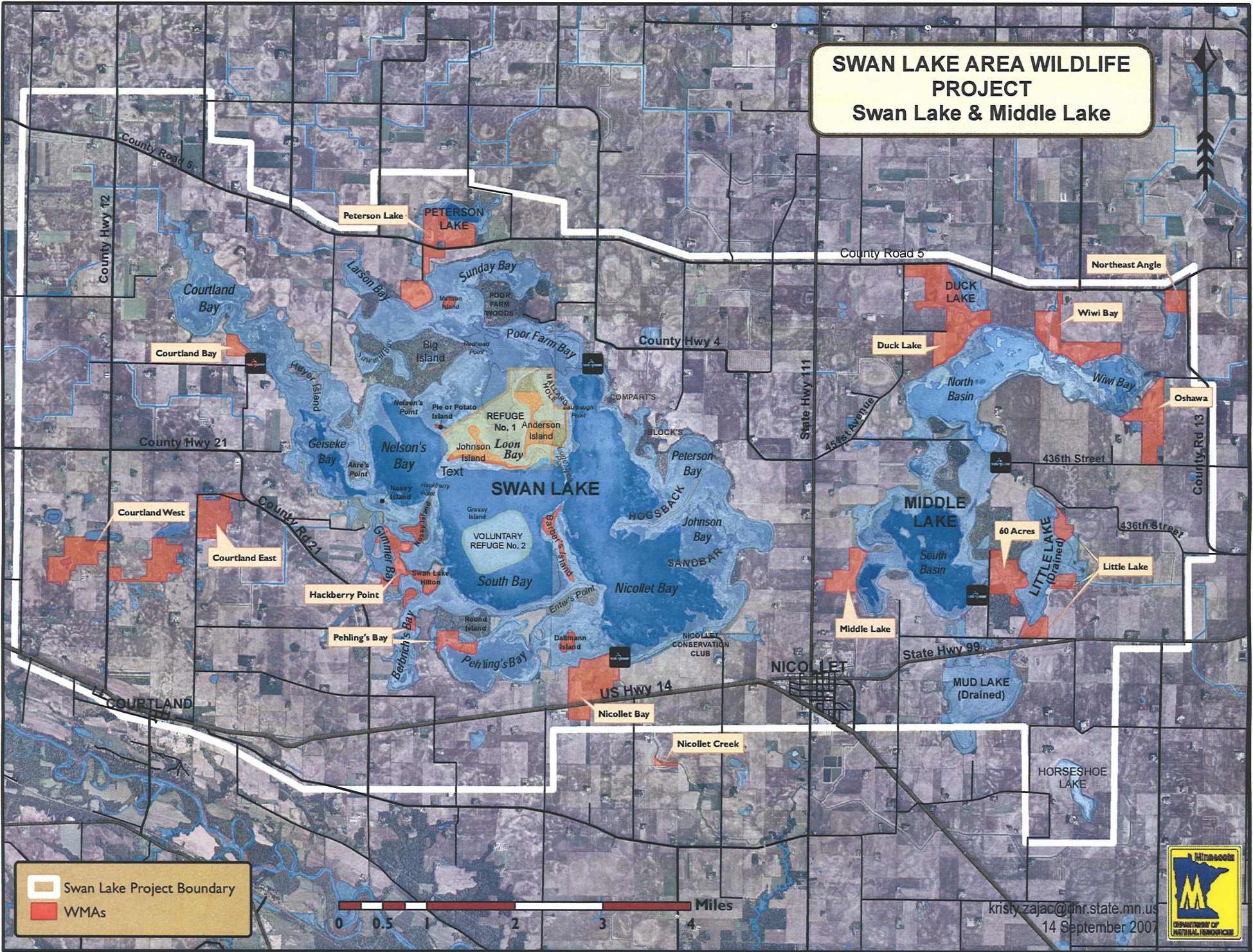


SWAN LAKE AREA WILDLIFE PROJECT

Swan Lake & Middle Lake



Swan Lake Project Boundary
 WMAs



kristy.zajac@dnr.state.mn.us
 14 September 2007



[Home](#) > [Destinations](#) > [Scientific & natural areas \(SNAs\)](#) >

Scientific & natural areas

- [Main page](#)
- [Visiting SNAs](#)
- [Natural history](#)
- [Volunteer on an SNA](#)
- [Scientific & Natural Areas program](#)
- [Bird Checklists](#)

Find a SNA

- [by a-z list](#)
- [in Coniferous forest](#)
- [in Deciduous woods](#)
- [in Prairie grasslands](#)

Joseph A. Tauer Prairie SNA



© for MN DNR by Cold Snap

80 Acres

Located from New Ulm, 8 miles S on Co Rd 13, then 2 miles W of the junction of Co Rds 13 and 22, SNA is on the N side of the road. Park on the township road on the west side.

Brown County Twp 109N Rng 31W Sec 35

Type: [Prairie Grasslands](#)

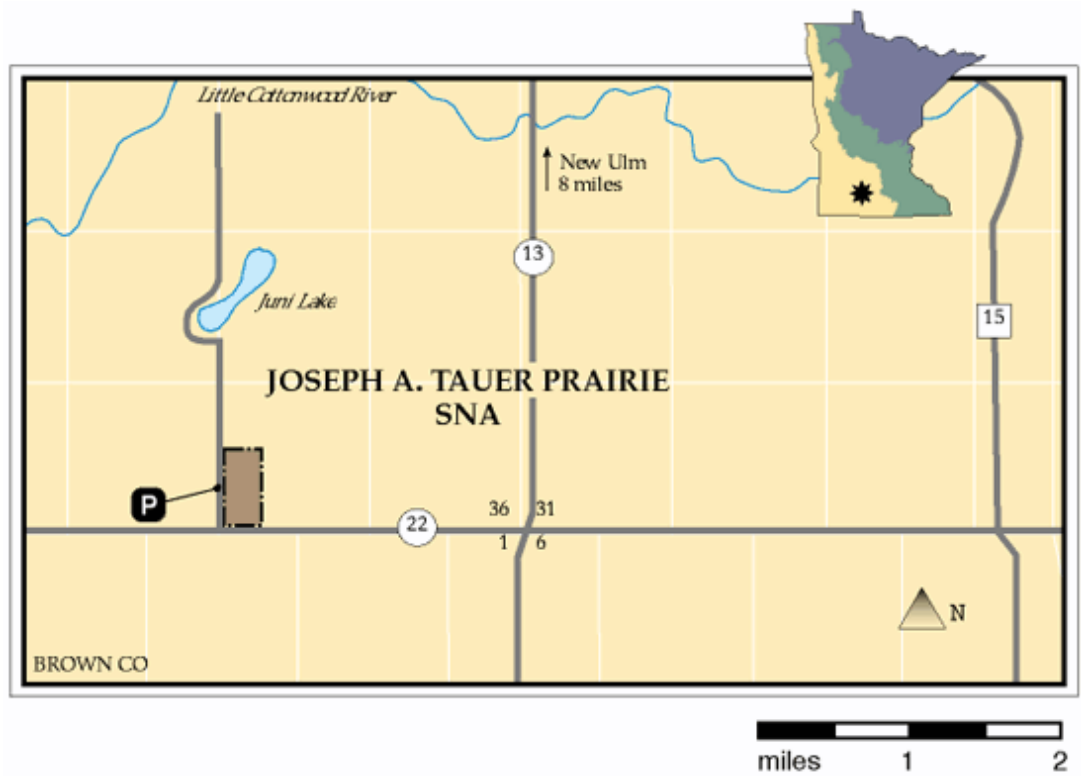
ECS Subsection: [Minnesota River Prairie](#)

Description:

This prairie was owned by Joseph A. Tauer, whose "eccentric" farming practices preserved the virgin prairie portions of this SNA. Tauer used only horses to farm until the 1980s, and he refused to drain the low portions of his land. He restricted his farming to the high, dry uplands of the several hundred acres of his holdings. When Tauer retired to a nursing home, he continued to protect his land through a Prairie Bank easement, thus funding his expenses. Just as Tauer protected his prairie land, the land in turn protected him. Upon his death, fee title for the remaining property was gifted to the state of Minnesota, leaving us the prairie we see today. The farmed, upland portions are now being restored. The undisturbed mesic to wet mesic prairie supports two rare species--tuberous Indian plantain and rattlesnake master--found here at the western limits of their ranges. Prairie clover, gray coneflower, star toadflax, tall blazing star, sneezeweed, wood betony, northern bedstraw, and other flowers bloom among the prairie grasses on this exceptionally rich, fertile soil.

[Bird List](#) [PDF](#)

[Plant List](#)

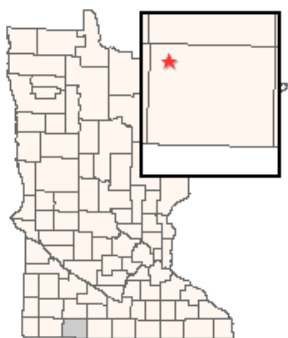


[Home](#) > [Destinations](#) > [Wildlife management areas \(WMAs\)](#) >

Wildlife Management Areas

- [Main page](#)
- [About WMAs](#)
- [Hunter walking trails](#)
- [Hunting information](#)
- [Hunting regulations](#)
- [Comment on WMA conditions](#)

WMA detail report



Additional Information:

- [interactive coverytype map](#)
- [recreation compass](#)

New! Make comments on this WMA's facilities or habitat conditions.

Valleau WMA

County: Jackson
Nearest Town: Heron Lake
Area: 309 ac

Directions: From Heron Lake, go 1 mile SW on SH 60.

Description: For more information on this WMA, contact the Area Wildlife office at 507-831-2900.

Recreation Opportunities:

Hunting options include: deer, small game, forest game birds, pheasant, and waterfowl.

Wildlife viewing options include: wetland wildlife, prairie wildlife, and forest wildlife.

Recreation Opportunities:





Hunting options include: deer, small game, forest game birds, pheasant, and waterfowl.

Wildlife viewing options include: wetland wildlife, prairie wildlife, and forest wildlife.

At this scale, these WMA boundaries are general, and do not accurately represent the actual legal boundaries. WMA users still need to verify public lands boundaries by observing boundary signs and contacting local DNR Wildlife offices.


Valleau WMA Tree Removal



-  Wildlife Managment Area Boundry
-  Woody Removal Project Area
-  No Cut Area
-  Farm Field

Section 25, La Crosse Twp
T104N, R38W
Jackson County

0 1000 2000 Feet





Heron Lake Watershed District

It is the mission of the HLWD to carry out the conservation of the natural resources within its jurisdiction using sound scientific principles to reduce property damage, improve water quality for the benefit of the public health, welfare, and recreation, and provide for the preservation and enhancement of wildlife habitat.

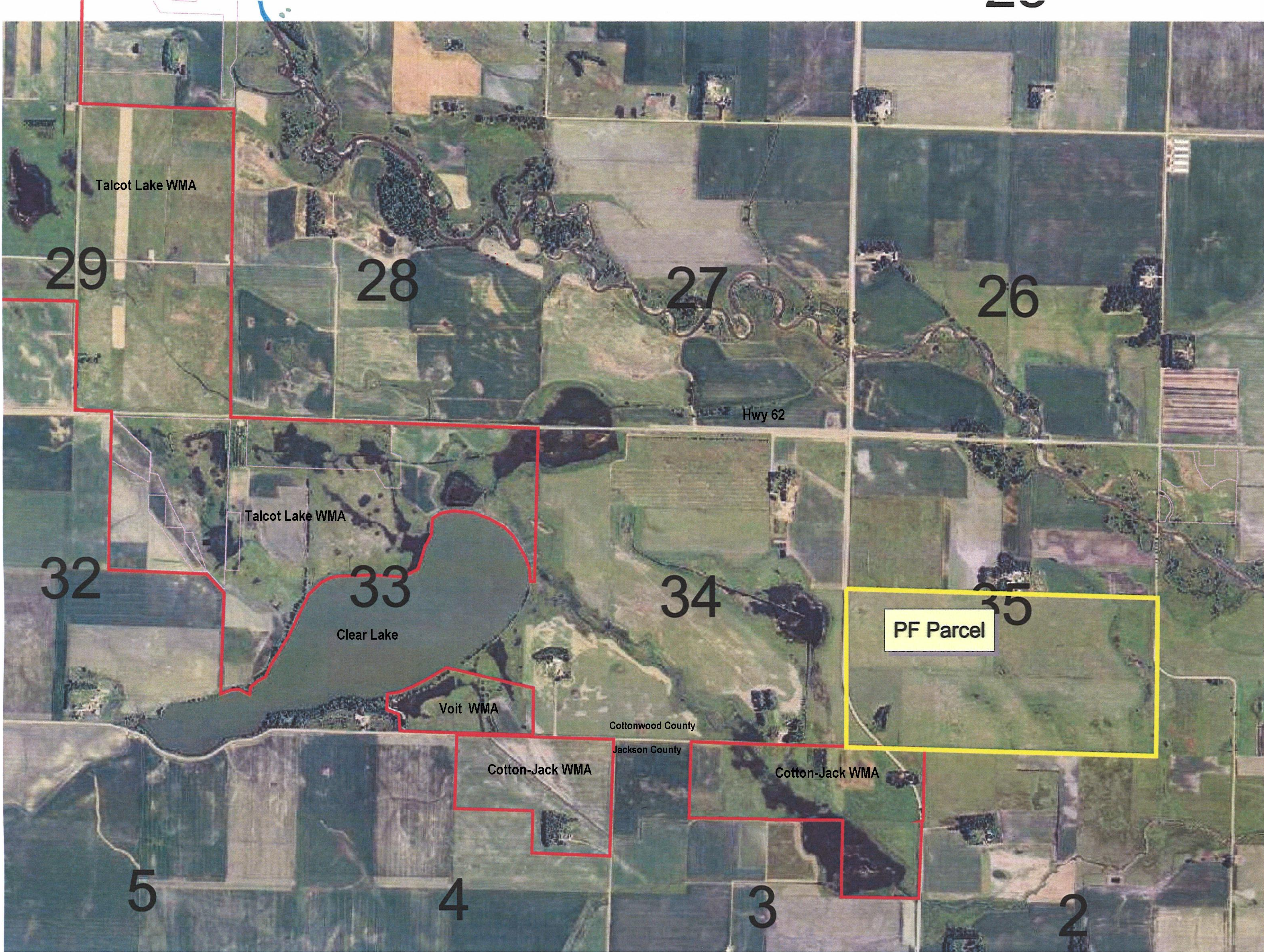
Accomplishments/Successes:

HLWD staff meets one-on-one with landowners and operators to provide information about BMP programs offered through local, state, and federal organizations. This has resulted in:

- 4,945.84 acres of filter strips,
- 336.38 acres of wetland restoration,
- 89.02 acres of farmstead and field windbreaks,
- nine rain gardens,
- 15 wildlife ponds,
- 38 terrace projects, and
- three shoreline restorations.

The HLWD strives to provide educational opportunities for watershed residents on a regular basis. This is done through monthly newsletters, newspaper articles, news releases, and education events. Since monitoring began in 1992, the water quality in Heron Lake has improved.

Detailed information regarding HLWD projects and programs can be found on the website at [.hlwdonline.org](http://hlwdonline.org).



Talcot Lake WMA

29

28

27

26

Hwy 62

Talcot Lake WMA

32

33

Clear Lake

34

35

PF Parcel

Voit WMA

Cottonwood County

Jackson County

Cotton-Jack WMA

Cotton-Jack WMA

5

4

3

2

- ▭ Duck Sanctuary - No Trespass During the Duck Season
- Goose Blinds
- Controlled Hunt Zone
- State Game Refuge - No Hunting Except From Blinds During the Canada Goose Season
- Waterfowl Refuge Boundary - No Waterfowl Hunting
- Talcot Lake Wildlife Area Boundary
- Sanctuary Boundary - No Trespass Anytime
- Parking Lots

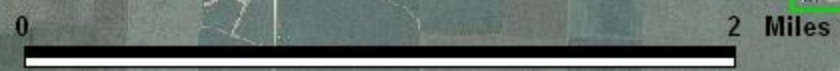


Talcot Lake WMA

Talcot Lake
WMA Headquarters

Hwy 62

Cottonjack WMA



August 2007

Recreation | Destinations | Nature | Education / safety | Licenses / permits / regs.

[Home](#) > [Destinations](#) > [Scientific & natural areas \(SNAs\)](#) >

Scientific & natural areas

- [Main page](#)
- [Visiting SNAs](#)
- [Natural history](#)
- [Volunteer on an SNA](#)
- [Scientific & Natural Areas program](#)
- [Bird Checklists](#)

Find a SNA

- [by a-z list](#)
- [in Coniferous forest](#)
- [in Deciduous woods](#)
- [in Prairie grasslands](#)

Rock Ridge Prairie SNA



© For MNDNR by Cold Snap

203 Acres

Located from Jeffers 7 miles E on MN Hwy 30, then 4 miles N on County Road 2. Park on W side of road.

Cottonwood County Twp 107 Rng 35 Sec 5

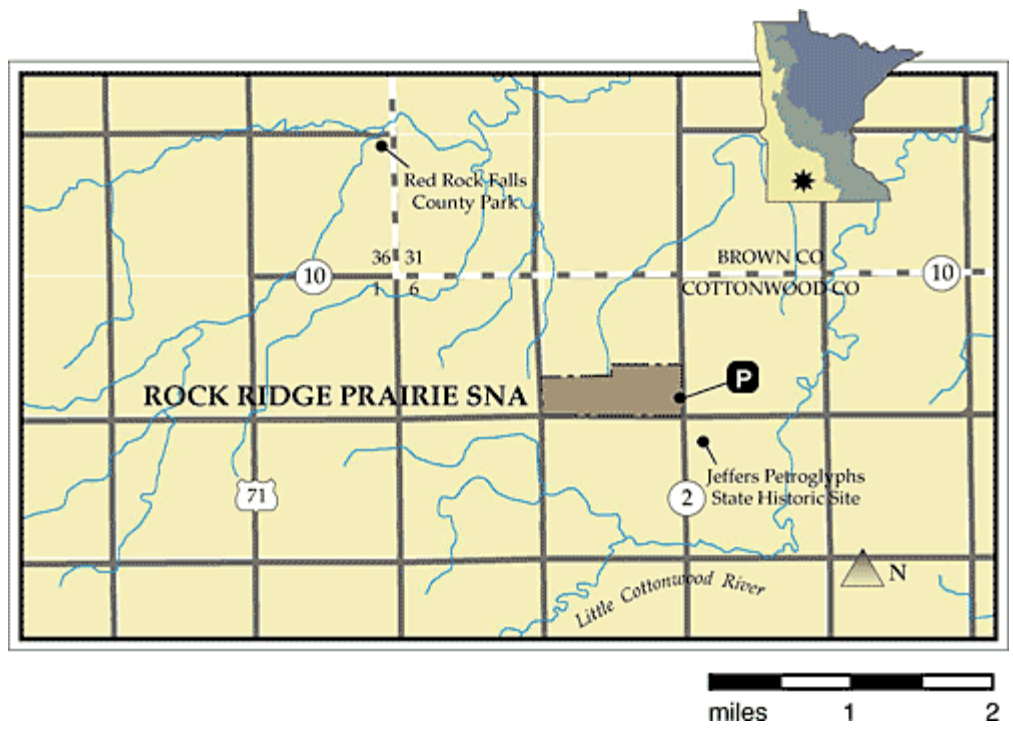
Type: [Prairie Grasslands](#)
ECS Subsection: [Minnesota River Prairie](#)

Description:

Come visit one of the highest quality black-soil prairies remaining in this area. It is part of the Red Rock Ridge prairie landscape; a series of prairie preserves lying along a ridge of Sioux quartzite outcrops that include Jeffers Petroglyphs State Historic Site and The Nature Conservancy's Red Rock Prairie Preserve. This site is host to prairie bush clover (*Lespedeza leptostachya*), a federally threatened species. Upland sandpipers, jackrabbits, leadplant, big bluestem, coreopsis, and alum root are some of the native species that are often seen on this prairie. The rock outcrops have features such as "mud cracks", "glacial scars", and ancient beach "ripples". Buffalo grass, commonly found further west, grows here in the hotter and dry environment of the rock outcrops.

[Bird List](#) [PDF](#)

[Plant List](#)



© 2010 MN Department of Natural Resources [copyright notice](#) | [accessibility](#) | [linking](#) | [privacy](#)



Questions?
1-888-MINNDNR
651-296-6157 in metro

info.dnr@state.mn.us

[Home](#) > [News](#) >

News

- [News releases](#)
- [RadioBite](#)
- [Public service announcements](#)
- [Cybernews Service](#)



News Releases

Whispering Ridge Aquatic Management Area called a "spectacular gift"

(Released October 5, 2009)

Brad Cobb calls it "a truly spectacular" piece of property.

Gene Jeseritz deems it "a wonderful opportunity for the citizens of Minnesota."

They are both referring to a new 182-acre aquatic management area (AMA) called Whispering Ridge along the Minnesota River near Delhi in Redwood County.

Cobb, program manager of the Minnesota River Valley Green Corridor project, and Jeseritz, Minnesota Department of Natural Resources (DNR) assistant area fisheries supervisor at Hutchinson, worked together to help the Green Corridor project secure a Legislative Citizen Commission on Minnesota Resources (LCCMR) grant to purchase the property. The LCCMR is funded with lottery proceeds through the Environment and Natural Resources Trust Fund.

Following its purchase, the Green Corridor project transferred ownership to the DNR to be developed as an AMA for activities such as hunting, fishing and canoe access. The National Wild Turkey Federation - Minnesota Super Fund in cooperation with its Redwood County chapter also provided funding assistance.

Jeseritz said Whispering Ridge has the potential to become one the more outstanding AMAs in the state system. "Besides its significant size, it also has approximately 4,880 feet of Minnesota River shoreline, substantial granite outcroppings, and excellent aquatic habitat and wildlife populations," Jeseritz said. "This is truly a wonderful opportunity for the citizens of Minnesota."

The canoe access is already operational and the AMA boundary signs should

Whispering Ridge AMA.



null

be up during the first part of October.

According to Cobb, the new AMA "fits in beautifully with what the Green Corridor project is trying to accomplish in terms of nature-based recreational opportunities, protecting and connecting fragmented habitats, and establishing this area of the Minnesota River Valley as a true tourism and outdoor recreation destination. This will be a very special and unique AMA and we want to thank the DNR for helping to make it a reality."

Additional information about the Green Corridor project can be found [online](#) at www.radc.org or by contacting Cobb at 320-493-4695.

Rock outcrops are ancient, unique

Along the upper Minnesota River Valley, from New Ulm to Ortonville, is a linear stretch of low, rounded gneiss and granite knobs called outcrops. Some of these rocks have been here for as long as 3.5 billion years, nearly a billion years longer than the bedrock visible in the Boundary Water Canoe Area Wilderness.

Fred Harris, a DNR plant ecologist, is intimately familiar with these rock outcrops and the unique plant and animal communities that inhabit them. And, he is concerned about their future.

"Federal highway construction standards now require crushed bedrock instead of gravel and it can be tempting for landowners to want to open up their rock outcrops to mining," Harris said. "While we need to have mining to supply highway rock, we also need to preserve these ancient outcrops when we can."

When the last glaciers retreated from this area some 12,000 years ago, the "massive erosional forces of Glacial River Warren exposed and abraded this ancient bedrock," Harris explained. "It's amazing that anything can grow or live on them but they are actually home to about 15 rare plant species."

Shallow soils that cover portions of rock outcrops retain little moisture for plant growth yet three species of drought-adapted cacti and the small flameflower manage to thrive. And in the spring, when shallow depressions in the rock accumulate water, these ephemeral (or vernal) pools support a surprising diversity of aquatic plants.

Rock outcrops are also home to the tiny fairy shrimp and clam shrimp, as well as the five-lined skink, a rare lizard that is active from May through August and then hibernates for eight months below the frost line in bedrock cracks or small animal burrows.

Harris said he has also been jolted on occasion while scanning outcrop surfaces for tiny plants by "the sudden flush of a common nighthawk disturbed from incubating its eggs on the bedrock. Both the bird and its eggs are mottled to blend in with the surrounding pitted and lichen-studded rock."

"Rock outcrops," Harris said, "are ecologically amazing places. And most Minnesotans don't even know they exist."

High-resolution image of Whispering Ridge AMA available [online](#).

© 2010 MN Department of Natural Resources [copyright notice](#) | [accessibility](#) | [linking](#) | [privacy](#)



Questions?
1-888-MINNDNR
651-296-6157 in metro

info.dnr@state.mn.us

Whispering Ridge AMA

Stop #4 (canoe campground)

Lower Parking Area

Stop #3 (prairie)

Field road to
river bottom

Stop #2 (rock outcroppings)

Stop #1 (upper parking area)

