

June 6 and 7, 2012

LSOHC Northeast Minnesota Tour

**This tour will be visiting Outdoor Heritage Funded program sites.

The public is welcome to join on any of the stops on this tour.

Questions: Contact Bill Becker, 612-590-5273

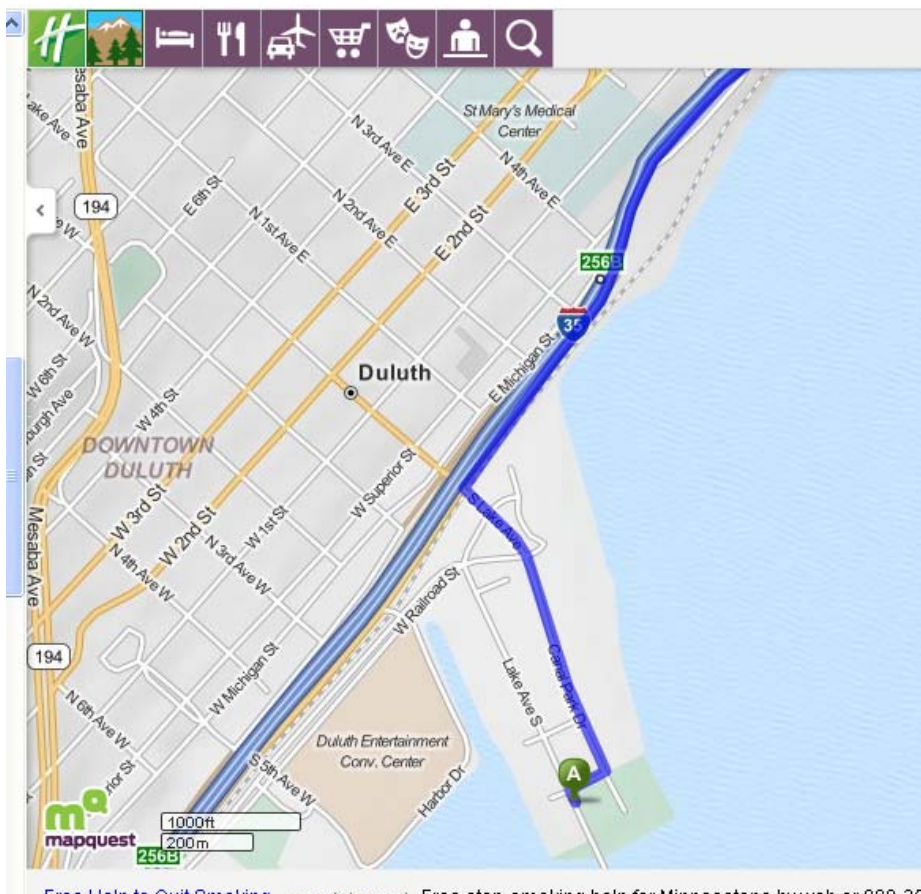
June 6, 2012

Time	Activity	Address
7:30 a.m.	Depart SOB Bus will pick members up on the SOUTH side of the State Office Bldg, DOT turnaround	State Office Bldg.
10:00 a.m.	Arrive at Spirit Mountain (coffee and treats) Welcome by Mayor Don Ness	9500 Spirit Mountain Place Duluth, MN 55810 (218) 628-2891
10:30 a.m.	<i>St. Louis River Restoration Initiative/AOC</i> <u>Kris Larson</u> (MLT) – 5 minutes – Introduction to place <u>Nelson French</u> (MPCA) – 12 minutes – Historical perspective of estuary; AOC designation and partnerships; brief description of sediment related issues and future remediation associated with R to R; transitioning into AOC habitat restoration. <u>John Lindgren</u> (MN DNR) – 20 minutes – Description of habitat restoration in the AOC <u>NGO Representative</u> (Muskie, BASS or TPWA) – 3 minutes – Fishing perspective of the estuary and thank you for support. <u>Questions</u> – 5 minutes	
11:15 a.m.	Presentation: Aquatic Habitat Restoration: A Statewide Look at Needs and Opportunities <u>Mike Duval</u> (MN DNR)	
12:00 p.m.	Depart Spirit Mountain to MPCA (lunch) .northernwaterssmokehaus.com	
12:10 p.m.	Arrive at MPCA (Canal Park) / Lunch for Council Members <i>Lunch being delivered by Northern Waters Smokehaus</i>	MPCA Duluth Office Palucci Bldg. Canal Park 218-723-4660 525 Lake Avenue South Suite 400 Duluth, MN 55802
1:00 p.m.	Public Meeting and Opportunity for Testimony Link to separate agenda: ://www.lsohc.leg.mn/agendas/2012/06_06_12_age.pdf	
2:45 p.m.	Meeting adjournment / Walk to Vista Fleet / Board Boat	
3:00 p.m.	Boat departs dock Welcome Chair David Hartwell and Vice-Chair Jim Cox	

	<p>Introduction by Dirk Petersosn, DNR Agency Representatives will give site specific information</p> <p>Tour of Lower St Louis River estuary, <i>by invitation only</i> ://www.glc.org/basin/pubs/projects/mn_EnhLowStLou_pub2.pdf</p> <p>Goes up to the top of Clough Island, stopping at 21st street, 40th street, Grassy Point, Knowlton Creek/Tallas and head of Clough for brief descriptions to accompany the tour packet of one page project descriptions and overview map.</p>	
5:00 p.m.	Boat returns to Canal Park	
5:30 – 7:00 p.m.	<p>Dinner in Canal Park – on your own ://visitduluth.com/home.php</p>	Canal Park restaurants
7:00 p.m.	Bus departs the MPCA parking lot	
7-8 p.m.	<p>Arrive at Hotel ://www.americinn.com/hotels/mn/twoharbors</p>	<p>AmericInn 1088 Highway 61 North Two Harbors, MN 55616 218-834-3000</p>

June 6th Directions:

- **SOB to Spirit Mountain:** Take I-35 North to Exit #249 (just 5 minutes south of downtown Duluth). Take a right at the top of the off-ramp and follow the frontage road around past McDonalds, the gas station, and the hotel. From there you'll see the signs to follow to our parking lots.
- **Spirit Mountain to PCA** (can the bus park in PCA lot through dinner?)
- **PCA to Two Harbors** (hotel) – 30 miles
 - Start out going northwest on S Lake Ave toward W Morse St.
 - Take the 1st right onto E Morse St.
 - Turn left onto Canal Park Dr.
 - Canal Park Dr becomes S Lake Ave.
 - Merge onto I-35 N.
 - Merge onto MN-61 N via EXIT 259 toward North Shore. (drive 23 miles)



•

June 7, 2012

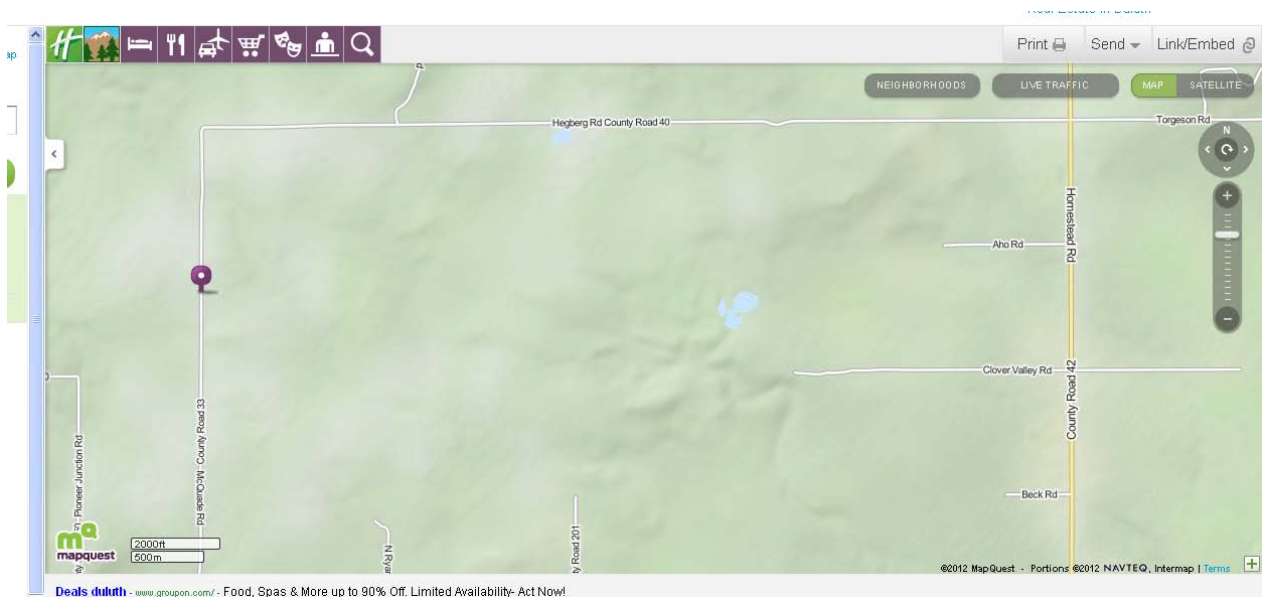
Opens at 6 a.m.	Hotel Continental Breakfast - on your own		
7:00 a.m.	Lunch delivery at hotel Vanilla Bean Cafe 812 7th Ave (Hwy 61) Two Harbors, MN 55616 Ph.218.834.3714		
7:30 a.m.	Check-out and depart Hotel		
8:00 a.m.	Sucker River (ML 2009) ://mntu.org/lessard-sams-project/sucker-river/ John Lenczewski, MN Trout Unlimited	Trout stream restoration.	
10 a.m.	Cloquet State Forest Burn/Enhancement Issues (ML 2010) ://www.dnr.state.mn.us/state_forests/sft00013/index.html Rick Klevorn, Rich Staffon, Dan Grindy, Jim Kelley, MN DNR	White pine regeneration, prescribed burn; impact on wildlife	
	Restroom break stop ?		
11:30 a.m.	Lunch on the bus while in travel		
	Restroom break stop ?		
2:30 p.m.	Sherburne National Wildlife Refuge (ML 2010) ://www.dnr.state.mn.us/snas/sna01039/index.html Tour Leaders/Participants will include: Greg Dehmer, FWS Ben Anderson, FWS Russ Langford, FWS Rick Horton, NWTF Wayne Ostlie, GRG Todd Rexine, GRG The tour will begin at the Mahnomen Trailhead, which is also the location of work under the current LSOHC grant. We'll do a short hike and discuss the project goals and deliverable at that time. We'll make a short drive to the second location, which will provide a good visual vantage point for comparing pre- and post-enhancement efforts. The site will also be the location where our upcoming funding will be targeted. From there, we'll take a drive through the center of the refuge, leaving the refuge on the south perimeter.	Oak savanna; species of concern; critically imperiled landscape type	
4:00 p.m.	Leave for St Paul		
5:00 p.m.	Arrive at SOB		

June 7th Directions:

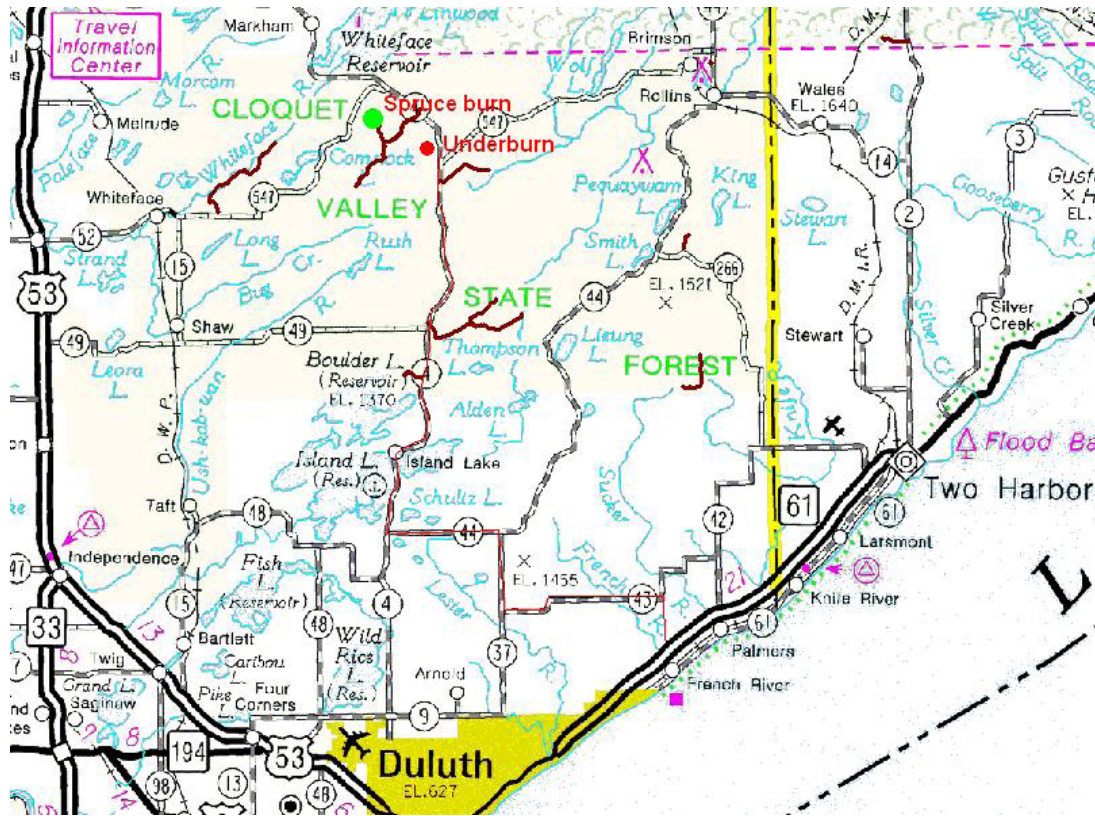
Directions to from Two Harbors, MN to MNTU's Sucker River habitat project at the McQuade Rd:

John Lenczewski, Trout Unlimited - 612-670-1629

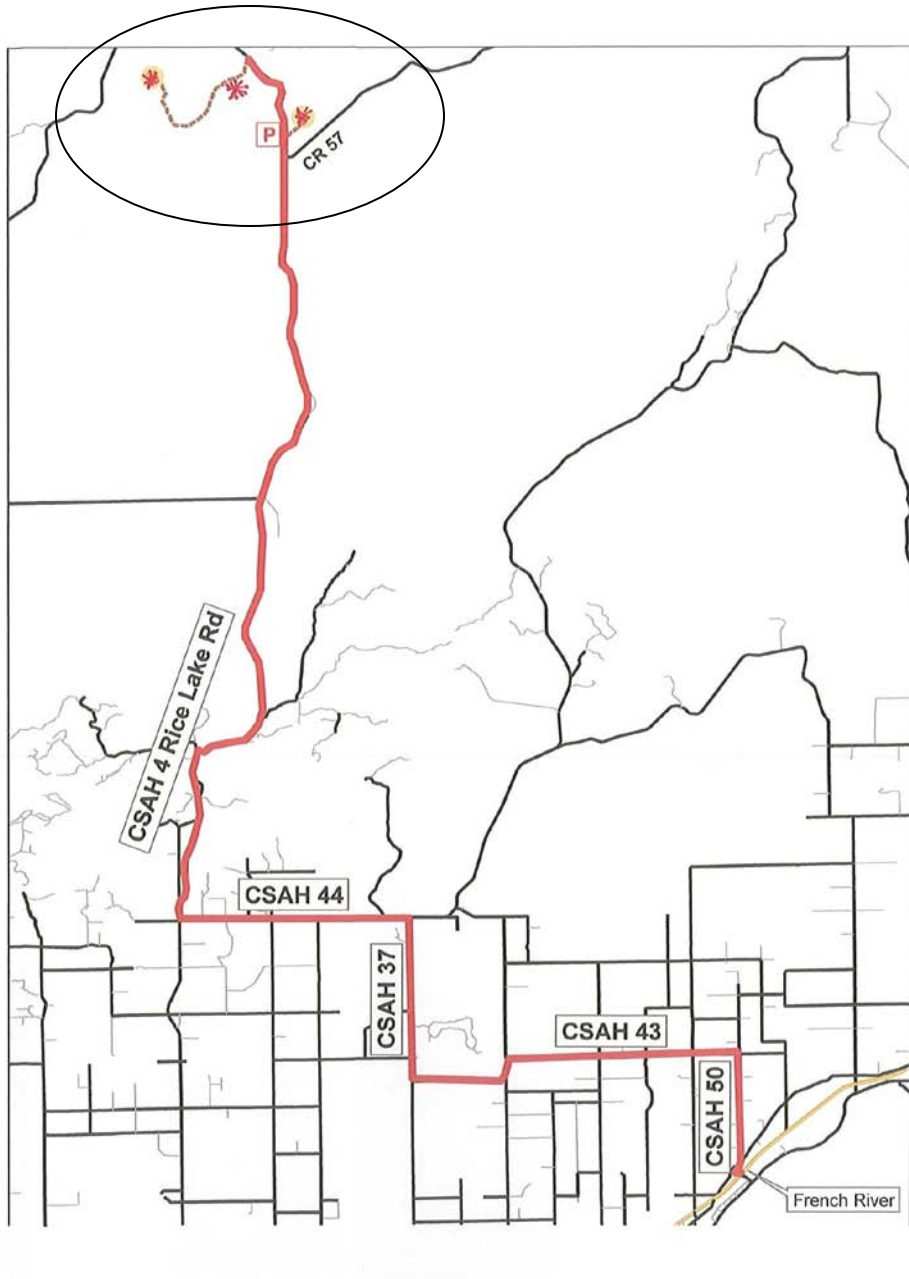
- From Two Harbor, take Hwy 61 south beyond the point at which it becomes a divided highway and passes under a railroad bridge. Proceed an additional one-half mile or so to Lake Co. Rd 9.
- Turn right (west) onto Lake Co Rd 9.
- Proceed west on Co Rd 9 approximately 4 miles to the St. Louis Co border and the intersection with Co Rd. 42.
- Proceed straight ahead on Co Rd. 42/Homestead Rd an additional 2 1/2 miles, at which point Homestead Rd. turns sharply (90%) south.
- Proceed south on Homestead Rd/Co Rd. 42 one mile to Hegberg Rd.
- Turn right (west) onto Hegberg Rd, and proceed 3 ½ miles west on this gravel road.
- Hegberg will turn 90% south and become McQuade Rd. Proceed south one-half mile on McQuade Rd to the bridge over the Sucker River. Immediately after crossing the bridge turn left (east) into the first driveway. Drive forward to the informational sign and parking area maintained by the property owner.



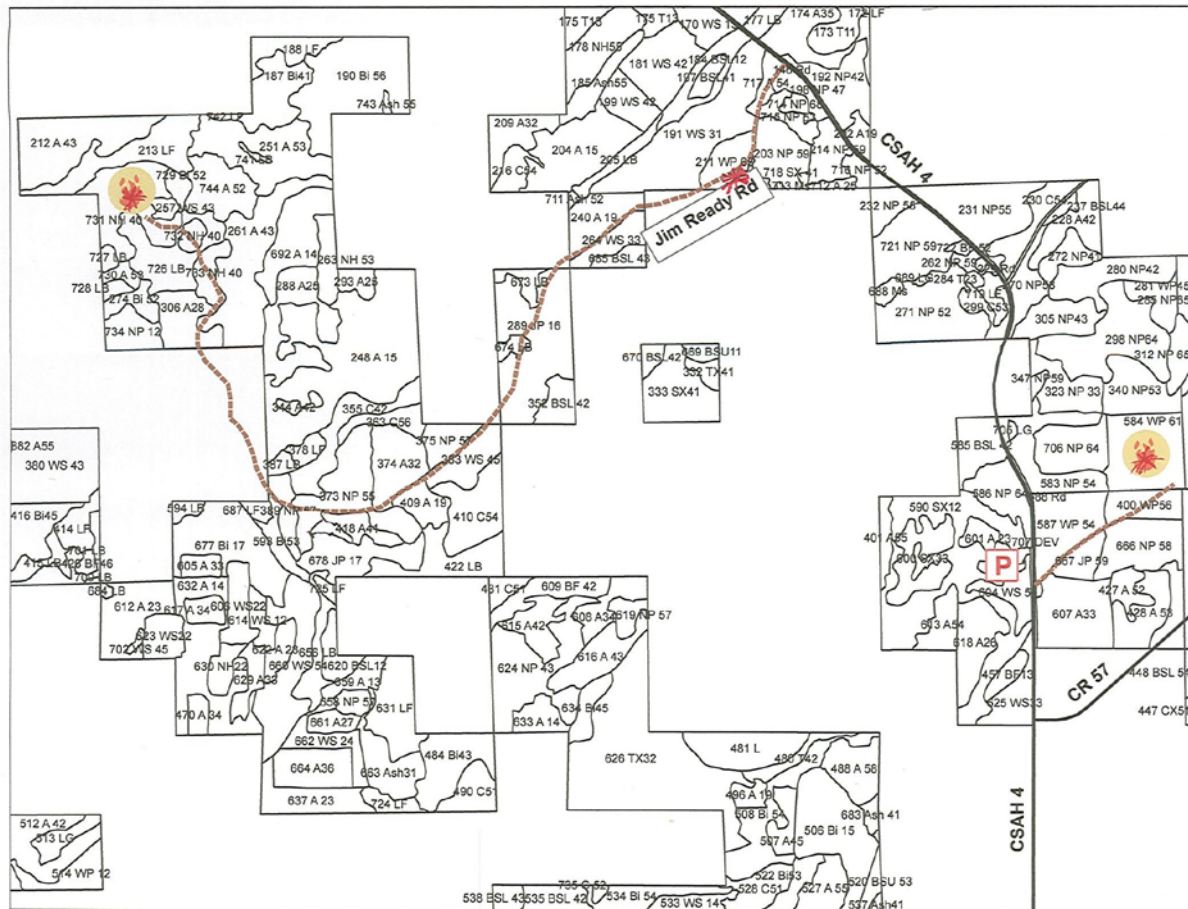
General Map of Cloquet Forestry Site Visit



Directions from Sucker River to Cloquet Forestry Site (2 maps provided)



Detail Enlargement of Cloquet Foresty Site



Directions from Princeton, MN to Sherburne National Wildlife Refuge

Follow Hwy. 169 south from Princeton 5 miles to Co. Rd. 9. Follow Co. Rd. 9 west 4 miles to the entrance to the Refuge. Continue on Co. Rd. 9 west 0.5 miles to reach the Mahnomon Trailhead (left side of the highway). The tour will commence from that location.

Sherburne National Wildlife Refuge to SOB – 169 South, bus to determine best route back to State Office Bldg.