

Lessard-Sams Outdoor Heritage Council

Fiscal Year 2021 / ML 2020 Request for Funding



Date: May 24, 2019

Program or Project Title: Wetland Habitat and Protection Program - Phase 5

Funds Requested: \$5,566,400

Manager's Name: Wayne Ostlie
Title: Director of Land Protection
Organization: Minnesota Land Trust
Address: 2356 University Avenue W
Address 2: Suite 240
City: St. Paul, MN 55114
Office Number: 651-917-6292
Mobile Number: 651-894-3870
Email: wostlie@mnland.org
Website: www.mnland.org

County Locations: Grant, Otter Tail, Pope, Swift, and Wilkin.

Eco regions in which work will take place:

- Forest / Prairie Transition
- Prairie

Activity types:

- Protect in Easement
- Restore
- Enhance

Priority resources addressed by activity:

- Wetlands
- Forest
- Prairie
- Habitat

Abstract:

Phase 5 of the Wetland Habitat Protection and Restoration Program will result in the protection of 2,600 acres of high priority wetland habitat complexes in Minnesota's Prairie and Forest-Prairie Transition areas by securing permanent conservation easements within scientifically prioritized habitat complexes. The Minnesota Land Trust will use its innovative market-based landowner bid model to maximize conservation benefit and financial leverage in protection project selection. In addition, a partnership between the US Fish and Wildlife Service and Land Trust will restore/enhance 1,518 acres of wetlands and associated prairies to benefit important waterfowl and SGCN populations.

Design and scope of work:

Wetlands and shallow lakes provide the essential backbone for the survival of waterfowl and other important wildlife species. In fact, more than 50% of Minnesota's Species in Greatest Conservation Need (SGCN) use wetlands during their life cycle. Most of the plans developed to protect Minnesota's wildlife—including Minnesota's Comprehensive Wildlife Conservation Strategy, the Statewide Conservation and Preservation Plan, and the Long Range Duck Recovery Plan—cite the protection and restoration of the state's remaining wetlands as one of the top priorities to achieve the State's conservation goals. Moreover, these plans cite the use of conservation easements on private lands as one of the primary strategies to protect important wetland and shallow lake habitat.

Minnesota Land Trust's Wetlands Habitat Protection Program area extends from Meeker County northwest to Becker County, located along a vast glacial moraine system in western Minnesota. This prairie pothole country is the core of Minnesota's "duck factory" and is central to one of North America's most important flyways for migratory waterfowl. Through Phase 3 of this program, the Land Trust has

procured 20 conservation easements protecting nearly 2,796 acres of habitat and 133,387 feet of shoreline (>25 miles).

Phase 5 will build on these accomplishments by broadening the Program's focus to include – along with wetland protection – habitat restoration and enhancement. In a partnership between the Land Trust and U.S. Fish and Wildlife Service's (USFWS) Partners for Fish and Wildlife Program, this proposal will restore/enhance 1,518 acres of important prairie and wetland habitat on private lands already protected within the Program area. In addition, the Land Trust will protect 2,600 acres of new priority wetland and associated upland habitat through conservation easements. The Program will be closely coordinated with other public agencies, non-profit organizations and other stakeholders to ensure this Program meets multi-agency conservation goals.

The Land Trust will continue to implement a criteria-based ranking system and market approach for purchasing conservation easements. The Program will continue to target projects that help complete gaps in existing public ownership, are of the highest ecological value, and provide the greatest leverage to the state. The Land Trust will seek donated easements in these areas whenever possible but also may purchase the full or partial value of an easement to complete key complexes as necessary.

To focus our easement protection work, we used the Prairie Plan and other data sets and plans to shape our Wetlands Program plan and identify important wetland complexes in this landscape based on the nexus of high-quality habitat, existing protected areas and restorable agricultural lands. These complexes include a mosaic of wetland, prairie/grassland, and forest habitats, as well as agricultural land. Outcomes from this project include: 1) healthy wetland habitat complexes and associated populations of waterfowl, upland birds, and SGCN; 2) improved water quality; 3) increased participation of private landowners in habitat conservation projects; and 4) enhancement of prior public investments in wetland and upland habitat projects.

Which sections of the Minnesota Statewide Conservation and Preservation Plan are applicable to this project:

- H1 Protect priority land habitats
- H5 Restore land, wetlands and wetland-associated watersheds

Which other plans are addressed in this proposal:

- Long Range Duck Recovery Plan
- Minnesota's Wildlife Action Plan 2015-2025

Describe how your program will advance the indicators identified in the plans selected:

Once secured, conservation easements will protect in perpetuity the important shoreland and associated upland habitats adjacent to some of Minnesota's premier wetland and prairie resources. Habitat management plans will be developed and provided to the landowners for use in enhancing and maintaining each parcel's important habitat. Restoration and enhancement of prairie and wetland habitats on USFWS easements will provide for enhanced habitat quality that will benefit a slate of SGCN along with waterfowl, pheasants, and other wildlife. Protection of these critical habitats advances a primary goal identified by Minnesota's Wildlife Action Plan through stabilization of SGCN, the state's waterfowl population through the Duck Plan, and the full slate of prairie species through the Prairie Plan.

Which LSOHC section priorities are addressed in this proposal:

Prairie:

- Protect, enhance, or restore existing wetland/upland complexes, or convert agricultural lands to new wetland/upland habitat complexes

Forest / Prairie Transition:

- Protect, enhance, and restore wild rice wetlands, shallow lakes, wetland/grassland complexes, aspen parklands, and shoreland that provide critical habitat for game and nongame wildlife

Describe how your program will produce and demonstrate a significant and permanent conservation legacy and/or outcomes for fish, game, and wildlife as indicated in the LSOHC priorities:

The Minnesota Land Trust and USFWS will focus their protection, restoration and enhancement work on key wetland, prairie and other habitats within Minnesota's Prairie Pothole area, guided by the Minnesota Prairie Plan, Duck Plan and State Wildlife Action plan. High quality lands are protected through acquisition of perpetual conservation easements; native habitats are restored and enhanced on existing eased lands. We work in partnership with local, state and federal agency and non-profit conservation partners to ensure our activities are complementary to those undertaken by others working in the program area. By doing this, we are building complexes of high quality protected habitat, reducing fragmentation concerns and providing for connectivity between core habitat areas that will

enable species to move freely.

In obtaining conservation easements (whether by donation or through purchase), we work with willing, conservation-minded landowners. Our landowner bid process will be targeted toward specific areas within our Wetlands program area identified through the plans listed above. Opportunities within the program area are identified and prioritized based on the potential to contribute to build a permanent conservation legacy that includes positive outcomes for wildlife and the public. Prairie and wetland habitats on lands protected through conservation easement by the Land Trust and USFWS are targeted for restoration and enhancement to elevate their inherent value for wildlife. Both the Land Trust and USFWS are deeply committed to maintaining these investments over time.

Describe how the proposal uses science-based targeting that leverages or expands corridors and complexes, reduces fragmentation or protects areas identified in the MN County Biological Survey:

This program is focused on procuring easements and restoring prairie and wetland habitats on easement lands within priority complexes of wetlands and associated upland habitats, as guided by the State Wildlife Action Plan, Duck Plan and Prairie Plan. Specific parcels available for easement acquisition are evaluated relative to each other to identify priorities among the pool of applicants. This relative ranking is based on three primary ecological factors (1. amount of habitat on the parcel (size) and abundance of SGCN; 2. the quality or condition of habitat; and 3. the parcel's context relative to other natural habitats and protected areas) and cost. The program serves to build upon past conservation investments in the program area, expand the footprint of existing protected areas (WMAs, WPAs, etc.), facilitate the protection of habitat corridors and reduce the potential for fragmentation of existing habitats. In addition, our partnership with USFWS will enable the Land Trust to further reduce effects of fragmentation through restoration of prairie, wetlands and other habitats. Minnesota Biological Survey data is a cornerstone to our assessment of potential conservation easement acquisitions; we also conduct field visits to further identify and assess condition of habitats prior to easement acquisition, because many private lands were not formally assessed through MBS.

How does the proposal address habitats that have significant value for wildlife species of greatest conservation need, and/or threatened or endangered species, and list targeted species:

This program addresses LSOHC priorities by protecting shallow lakes, wetland/grassland complexes, and shoreland that provide critical habitat for Minnesota's wildlife, especially its migratory waterfowl and associated species.

Minnesota's wetlands are essential to our wildlife health and diversity. This project directly benefits SGCN and other important game and non-game wildlife species by minimizing the potential threats to their habitat caused by detrimental agricultural practices, residential or commercial development or imprudent land management. The wetland habitat complexes that will be targeted through the ranking system will include a mosaic of wetlands, grasslands and woodlands. Priority projects will include high or outstanding habitat as identified in Minnesota Biological Survey data. Projects will also be located near other protected lands to help build larger habitat complexes comprised of both public and private lands. The vast majority of this landscape is in private ownership. For that reason, working with private owners on land protection strategies is key to successful conservation in this region. Finally, we will work closely with partners in the region to identify those habitat complexes where private land protection can make a significant contribution to existing conservation investments.

Identify indicator species and associated quantities this habitat will typically support:

DNR staff, in consultation with a variety of experts in NGOs and other agencies, have compiled a list of indicator species and associated quantities to be used to answer the question above. The metrics are derived from existing data sources and/or scientific literature, but are necessarily gross averages; they are not accurate at a site-specific scale. Therefore, they are not intended to be used to score or rank requests, but represent the best information we have for immediate support of the Council's objective.

1. Prairies and Grasslands

Bobolink and Grasshopper Sparrow: The breeding territory size of bobolinks and grasshopper sparrows is 1.7 and 2.1 acres respectively in high quality habitat in Wisconsin. 100 acres of habitat could potentially hold approximately 60 and 48 pairs of bobolinks and grasshopper sparrows, respectively.

Ring-necked Pheasant: By looking at the ratios of CRP acres in Minnesota to pheasant harvest, we can estimate that every three acres of grassland habitat has the potential to produce one harvested pheasant rooster.

2. Wetlands and Shallow Lakes

Mallard: The biological model used in the UMRG LRJV uses a simple but accepted rate of 1 mallard pair per hectare (1 mallard pair per 2.47 acres) of wetland habitat (noting that upland nesting habitat is also needed).

Trumpeter swan: Though reported territories can range in size from 1.5 - >100 hectares, a reasonable expectation is that 1 trumpeter swan pair would be supported by each 150 acres of wetland protected, restored or enhanced.

Outcomes:

Programs in forest-prairie transition region:

- Protected, restored, and enhanced nesting and migratory habitat for waterfowl, upland birds, and species of greatest conservation need *This program will permanently protect 1,300 acres of wetland and upland habitat complexes and restore/enhance 658 acres of wetlands and prairies in the forest-prairie transition region. Measure: Acres protected; acres restored; acres enhanced.*

Programs in prairie region:

- Remnant native prairies and wetlands are perpetually protected and adequately buffered *This program will permanently protect 1,300 acres of wetland and upland habitat complexes and restore/enhance 860 acres of wetlands and prairies in the prairie region. Measure: Acres protected; acres restored; acres enhanced.*

How will you sustain and/or maintain this work after the Outdoor Heritage Funds are expended:

The land protected through conservation easements will be sustained through state-of-the-art standards and practices for conservation easement stewardship. The Minnesota Land Trust is a nationally-accredited land trust with a very successful stewardship program that includes annual property monitoring, effective records management, addressing inquiries and interpretations, tracking changes in ownership, investigating potential violations and defending the easement in cases of a true violation. Funding for these easement stewardship activities is included in the project budget.

In addition, MLT will assist landowners in the development of comprehensive habitat management plans to help ensure that the land will be managed for its wildlife and water quality benefits. USFWS and MLT (as easement holders on respective properties) will work with landowners on an ongoing basis to provide habitat restoration plans, resources and technical expertise to undertake restoration, enhancement and ongoing management of these properties.

Explain the things you will do in the future to maintain project outcomes:

| Year | Source of Funds | Step 1 | Step 2 | Step 3 |
|------------------------|--|---|--------------------------|--------|
| 2024 and in perpetuity | MLT Long-Term Stewardship and Enforcement Fund | Annual monitoring of easements in perpetuity | Enforcement as necessary | |
| Every 4-6 years | USFWS, Landowners, MLT | Prescribed fire, tree control, invasive species control | | |

What is the degree of timing/opportunistic urgency and why it is necessary to spend public money for this work as soon as possible:

Although the Land Trust and USFWS have been active in this landscape for more than 15 years, we now have a unique window of time to deepen our commitment and conservation impact to protect important wetland complexes. With an aging landowner population and organizational momentum, the time to implement a robust wetland protection and restoration program for this region is ripe. To focus our work, we have completed an initial analysis to identify important wetland complexes in this landscape based on the nexus of high-quality habitat, existing protected areas and restorable agricultural lands. These complexes include a mosaic of wetland, prairie/grassland, and forest habitats, as well as agricultural land.

Does this program include leverage in funds:

Yes

Through its market-based RFP process, the Land Trust expects private landowners to donate at least \$900,000 in easement value toward the program, which is shown as leverage. In addition, the USFWS will contribute \$28,400 in cash and in-kind contributions toward restoration and enhancement projects on protected lands.

Relationship to other funds:

- Environmental and Natural Resource Trust Fund

Describe the relationship of the funds:

The Minnesota Land Trust was a partner in the Habitat Conservation Partnership (HCP), which received grants from the Minnesota Environment and Natural Resources Trust Fund, as recommended by the Legislative-Citizen Commission on Minnesota Resources

(LCCMR), from 2001 to 2011. This proposed OHF grant accelerates the Land Trust's work in protecting critical wetland and associated upland habitat within the program area and does not supplant any existing funding sources.

Per MS 97A.056, Subd. 24, Any state agency or organization requesting a direct appropriation from the OHF must inform the LSOHC at the time of the request for funding is made, whether the request is supplanting or is a substitution for any previous funding that was not from a legacy fund and was used for the same purpose:

Funding procured by MLT through the Outdoor Heritage Fund through this proposal will not supplant or substitute any previous funding from a non-Legacy fund used for the same purpose.

Describe the source and amount of non-OHF money spent for this work in the past:

Not Listed

Activity Details

Requirements:

If funded, this proposal will meet all applicable criteria set forth in MS 97A.056 - **Yes**

Is the land you plan to acquire (easement) free of any other permanent protection - **Yes**

Will restoration and enhancement work follow best management practices including MS 84.973 Pollinator Habitat Program - **Yes**

Is the restoration and enhancement activity on permanently protected land per 97A.056, subd 13(f), tribal lands, and/or public waters per MS 103G.005, Subd. 15 - **Yes (Permanently Protected Conservation Easements)**

Do you anticipate federal funds as a match for this program - **Yes**

Are the funds confirmed - **Yes**

Documentation

What are the types of funds?

Cash Match - \$8400

In-Kind Match - \$20000

Land Use:

Will there be planting of corn or any crop on OHF land purchased or restored in this program - **Yes**

Explain

Easement Acquisition:

The purpose of the Minnesota Land Trust's conservation easements is to protect existing high quality natural habitat and to preserve opportunities for future restoration. We restrict agricultural lands and use on the properties. In cases where there are agricultural lands associated with the larger property, we will either exclude the agricultural area from the conservation easement, or in some limited cases, we may include a small percentage of agricultural lands if it is not feasible to exclude those areas. In such cases, however, we will not use OHF funds to pay the landowners for that portion of the conservation easement.

Restoration/Enhancement:

Short-term use of agricultural crops is an accepted best practice for preparing a site for prairie restoration. For example, short-term use of soybeans could be used for restorations in order to control weed seedbeds prior to prairie planting. In some cases this necessitates the use of GMO treated products to facilitate herbicide use in order to control weeds present in the seedbank.

Will the eased land be open for public use - **No**

Are there currently trails or roads on any of the acquisitions on the parcel list - **Yes**

Describe the types of trails or roads and the allowable uses:

Most conservation easements are established on private lands, many of which have driveways, field roads and trails located on them.

Often, the conservation easement permits the continued usage of established trails and roads so long as their use does not significantly impact the conservation values of the property. Creation of new roads/trails or expansion of existing ones is typically not allowed.

Will the trails or roads remain and uses continue to be allowed after OHF acquisition - **Yes**

How will maintenance and monitoring be accomplished:

Existing trails and roads are identified in the project baseline report and will be monitored annually as part of the Land Trust's stewardship and enforcement protocols. Maintenance of permitted roads/trails in accordance with the terms of the easement will be the responsibility of the landowner.

Will new trails or roads be developed or improved as a result of the OHF acquisition - **No**

Accomplishment Timeline

| Activity | Approximate Date Completed |
|---|----------------------------|
| Conservation easements completed or options secured | June 30, 2023 |
| Restoration and enhancement projects completed | June 30, 2025 |

Budget Spreadsheet

Total Amount of Request: \$5,566,400

Budget and Cash Leverage

| Budget Name | LSOHC Request | Anticipated Leverage | Leverage Source | Total |
|----------------------------|--------------------|----------------------|--|--------------------|
| Personnel | \$486,000 | \$20,000 | USFWS | \$506,000 |
| Contracts | \$912,200 | \$8,400 | USFWS | \$920,600 |
| Fee Acquisition w/ PILT | \$0 | \$0 | | \$0 |
| Fee Acquisition w/o PILT | \$0 | \$0 | | \$0 |
| Easement Acquisition | \$3,000,000 | \$900,000 | Private Landowner Donation of Easement Value | \$3,900,000 |
| Easement Stewardship | \$504,000 | \$0 | | \$504,000 |
| Travel | \$38,000 | \$0 | | \$38,000 |
| Professional Services | \$380,000 | \$0 | | \$380,000 |
| Direct Support Services | \$131,200 | \$0 | | \$131,200 |
| DNR Land Acquisition Costs | \$0 | \$0 | | \$0 |
| Capital Equipment | \$0 | \$0 | | \$0 |
| Other Equipment/Tools | \$15,000 | \$0 | | \$15,000 |
| Supplies/Materials | \$100,000 | \$0 | | \$100,000 |
| DNR IDP | \$0 | \$0 | | \$0 |
| Total | \$5,566,400 | \$928,400 | | \$6,494,800 |

Personnel

| Position | FTE | Over # of years | LSOHC Request | Anticipated Leverage | Leverage Source | Total |
|-----------------------|-------------|-----------------|------------------|----------------------|-----------------|------------------|
| MLT Protection Staff | 0.80 | 3.00 | \$216,000 | \$0 | | \$216,000 |
| MLT Restoration Staff | 1.00 | 3.00 | \$270,000 | \$20,000 | USFWS | \$290,000 |
| Total | 1.80 | 6.00 | \$486,000 | \$20,000 | | \$506,000 |

Amount of Request: \$5,566,400
 Amount of Leverage: \$928,400
 Leverage as a percent of the Request: 16.68%
 DSS + Personnel: \$617,200
 As a % of the total request: 11.09%
 Easement Stewardship: \$504,000
 As a % of the Easement Acquisition: 16.80%

How did you determine which portions of the Direct Support Services of your shared support services is direct to this program:

In a process that was approved by the DNR on March 17, 2017, Minnesota Land Trust determined our direct support services rate to include all of the allowable direct and necessary expenditures that are not captured in other line items in the budget, which is similar to the Land Trust's proposed federal indirect rate. We will apply this DNR-approved rate only to personnel expenses to determine the total amount of direct support services.

What is included in the contracts line?

Restoration and enhancement accounts for \$712,000 of the contract line amount. Additional funds in the contract line are for the writing of habitat management plans via qualified vendors and engaging respective County Soil and Water Conservation Districts for landowner outreach purposes to facilitate communication of the protection program.

Does the amount in the travel line include equipment/vehicle rental? - Yes

Explain the amount in the travel line outside of traditional travel costs of mileage, food, and lodging:

Land Trust staff regularly rent vehicles for grant-related purposes, which is a significant cost savings over use of personal vehicles.

Describe and explain leverage source and confirmation of funds:

The Land Trust encourages landowners to fully or partially donate the value of conservation easements to the program. The leverage amount is a conservative estimate of value we expect to see donated by landowners. USFWS has committed cash and in-kind staff time toward restoration/enhancement projects.

Does this proposal have the ability to be scalable? - Yes

Tell us how this project would be scaled and how administrative costs are affected, describe the “economy of scale” and how outputs would change with reduced funding, if applicable:

Because this program endeavors to protect and restore/enhance multiple parcels, it is scalable. Less funding will result in fewer protected acres and lost opportunities in an area where landowner interest and opportunity is high. Some costs are fixed; economy of scale diminishes with reduction in appropriation amount.

What is the cost per easement for stewardship and explain how that amount is calculated?

The average cost per easement to fund the Minnesota Land Trust's perpetual monitoring and enforcement obligations is \$24,000. This figure is derived from MLT's detailed stewardship funding “cost analysis” which is consistent with Land Trust Accreditation standards. MLT shares periodic updates to this cost analysis with LSOHC staff.

Output Tables

Table 1a. Acres by Resource Type

| Type | Wetlands | Prairies | Forest | Habitats | Total |
|--|----------|----------|--------|----------|-------|
| Restore | 25 | 198 | 0 | 0 | 223 |
| Protect in Fee with State PILT Liability | 0 | 0 | 0 | 0 | 0 |
| Protect in Fee W/O State PILT Liability | 0 | 0 | 0 | 0 | 0 |
| Protect in Easement | 0 | 0 | 0 | 2,600 | 2,600 |
| Enhance | 119 | 1,176 | 0 | 0 | 1,295 |
| Total | 144 | 1,374 | 0 | 2,600 | 4,118 |

Table 1b. How many of these Prairie acres are Native Prairie?

| Type | Native Prairie |
|--|----------------|
| Restore | 0 |
| Protect in Fee with State PILT Liability | 0 |
| Protect in Fee W/O State PILT Liability | 0 |
| Protect in Easement | 0 |
| Enhance | 134 |
| Total | 134 |

Table 2. Total Requested Funding by Resource Type

| Type | Wetlands | Prairies | Forest | Habitats | Total |
|--|-----------|-------------|--------|-------------|-------------|
| Restore | \$15,900 | \$148,400 | \$0 | \$0 | \$164,300 |
| Protect in Fee with State PILT Liability | \$0 | \$0 | \$0 | \$0 | \$0 |
| Protect in Fee W/O State PILT Liability | \$0 | \$0 | \$0 | \$0 | \$0 |
| Protect in Easement | \$0 | \$0 | \$0 | \$4,398,300 | \$4,398,300 |
| Enhance | \$109,900 | \$893,900 | \$0 | \$0 | \$1,003,800 |
| Total | \$125,800 | \$1,042,300 | \$0 | \$4,398,300 | \$5,566,400 |

Table 3. Acres within each Ecological Section

| Type | Metro/Urban | Forest/Prairie | SE Forest | Prairie | Northern Forest | Total |
|--|-------------|----------------|-----------|---------|-----------------|-------|
| Restore | 0 | 61 | 0 | 162 | 0 | 223 |
| Protect in Fee with State PILT Liability | 0 | 0 | 0 | 0 | 0 | 0 |
| Protect in Fee W/O State PILT Liability | 0 | 0 | 0 | 0 | 0 | 0 |
| Protect in Easement | 0 | 1,300 | 0 | 1,300 | 0 | 2,600 |
| Enhance | 0 | 597 | 0 | 698 | 0 | 1,295 |
| Total | 0 | 1,958 | 0 | 2,160 | 0 | 4,118 |

Table 4. Total Requested Funding within each Ecological Section

| Type | Metro/Urban | Forest/Prairie | SE Forest | Prairie | Northern Forest | Total |
|--|-------------|----------------|-----------|-------------|-----------------|-------------|
| Restore | \$0 | \$91,200 | \$0 | \$73,100 | \$0 | \$164,300 |
| Protect in Fee with State PILT Liability | \$0 | \$0 | \$0 | \$0 | \$0 | \$0 |
| Protect in Fee W/O State PILT Liability | \$0 | \$0 | \$0 | \$0 | \$0 | \$0 |
| Protect in Easement | \$0 | \$2,199,100 | \$0 | \$2,199,200 | \$0 | \$4,398,300 |
| Enhance | \$0 | \$491,200 | \$0 | \$512,600 | \$0 | \$1,003,800 |
| Total | \$0 | \$2,781,500 | \$0 | \$2,784,900 | \$0 | \$5,566,400 |

Table 5. Average Cost per Acre by Resource Type

| Type | Wetlands | Prairies | Forest | Habitats |
|--|----------|----------|--------|----------|
| Restore | \$636 | \$749 | \$0 | \$0 |
| Protect in Fee with State PILT Liability | \$0 | \$0 | \$0 | \$0 |
| Protect in Fee W/O State PILT Liability | \$0 | \$0 | \$0 | \$0 |
| Protect in Easement | \$0 | \$0 | \$0 | \$1,692 |
| Enhance | \$924 | \$760 | \$0 | \$0 |

Table 6. Average Cost per Acre by Ecological Section

| Type | Metro/Urban | Forest/Prairie | SE Forest | Prairie | Northern Forest |
|--|-------------|----------------|-----------|---------|-----------------|
| Restore | \$0 | \$1,495 | \$0 | \$451 | \$0 |
| Protect in Fee with State PILT Liability | \$0 | \$0 | \$0 | \$0 | \$0 |
| Protect in Fee W/O State PILT Liability | \$0 | \$0 | \$0 | \$0 | \$0 |
| Protect in Easement | \$0 | \$1,692 | \$0 | \$1,692 | \$0 |
| Enhance | \$0 | \$823 | \$0 | \$734 | \$0 |

Automatic system calculation / not entered by managers

Target Lake/Stream/River Feet or Miles

0

I have read and understand Section 15 of the Constitution of the State of Minnesota, Minnesota Statute 97A.056, and the Call for Funding Request. I certify I am authorized to submit this proposal and to the best of my knowledge the information provided is true and accurate.

Parcel List

Explain the process used to select, rank and prioritize the parcels:

The Land Trust uses a competitive, market-based approach through an RFP process to identify interested landowners and prioritize parcels for conservation easement acquisition. All proposals submitted by landowners are evaluated and ranked relative to their ecological significance based on three primary factors: 1) size of habitat on the parcel; 2) condition of habitat on the parcel; and 3) the context (both in terms of amount/quality of remaining habitat and protected areas) within which the parcel lies. We also ask the landowner to consider contributing all or a portion of fair market value to enable our funds to make a larger conservation impact (see attached sign-up criteria). We contract with local SWCD offices to provide outreach services as a way to connect effectively with local landowners.

Restoration and enhancement work will take place on private lands over which MLT and USFWS have secured permanent conservation easements to protect wetlands and associated upland habitat. The projects included in the parcel list were identified as priorities for restoration/enhancement by USFWS staff in their Morris and Fergus Falls offices and MLT staff.

Section 1 - Restore / Enhance Parcel List

Grant

| Name | TRDS | Acres | Est Cost | Existing Protection? |
|------|----------|-------|----------|----------------------|
| DVel | 12743203 | 4 | \$10,000 | Yes |

Otter Tail

| Name | TRDS | Acres | Est Cost | Existing Protection? |
|----------|----------|-------|-----------|----------------------|
| CHanMSIa | 13138207 | 188 | \$167,700 | Yes |
| DRen | 13743205 | 198 | \$27,400 | Yes |
| FFFGCDem | 13142227 | 211 | \$165,500 | Yes |
| FFFGCSau | 13443236 | 102 | \$100,375 | Yes |
| JCMar | 13242223 | 71 | \$46,000 | Yes |
| KEva | 13140213 | 54 | \$63,428 | Yes |
| LWRog | 13243222 | 76 | \$60,000 | Yes |
| RScoDBra | 13244202 | 25 | \$10,000 | Yes |

Pope

| Name | TRDS | Acres | Est Cost | Existing Protection? |
|------|----------|-------|----------|----------------------|
| Ande | 12438232 | 32 | \$12,000 | Yes |
| NEst | 12438223 | 137 | \$38,600 | Yes |

Swift

| Name | TRDS | Acres | Est Cost | Existing Protection? |
|------|----------|-------|----------|----------------------|
| Flad | 12238223 | 182 | \$22,000 | Yes |
| Lehn | 12243220 | 39 | \$12,000 | Yes |

Wilkin

| Name | TRDS | Acres | Est Cost | Existing Protection? |
|------|----------|-------|----------|----------------------|
| TMal | 13645228 | 154 | \$77,145 | Yes |

Section 2 - Protect Parcel List

No parcels with an activity type protect.

Section 2a - Protect Parcel with Bldgs

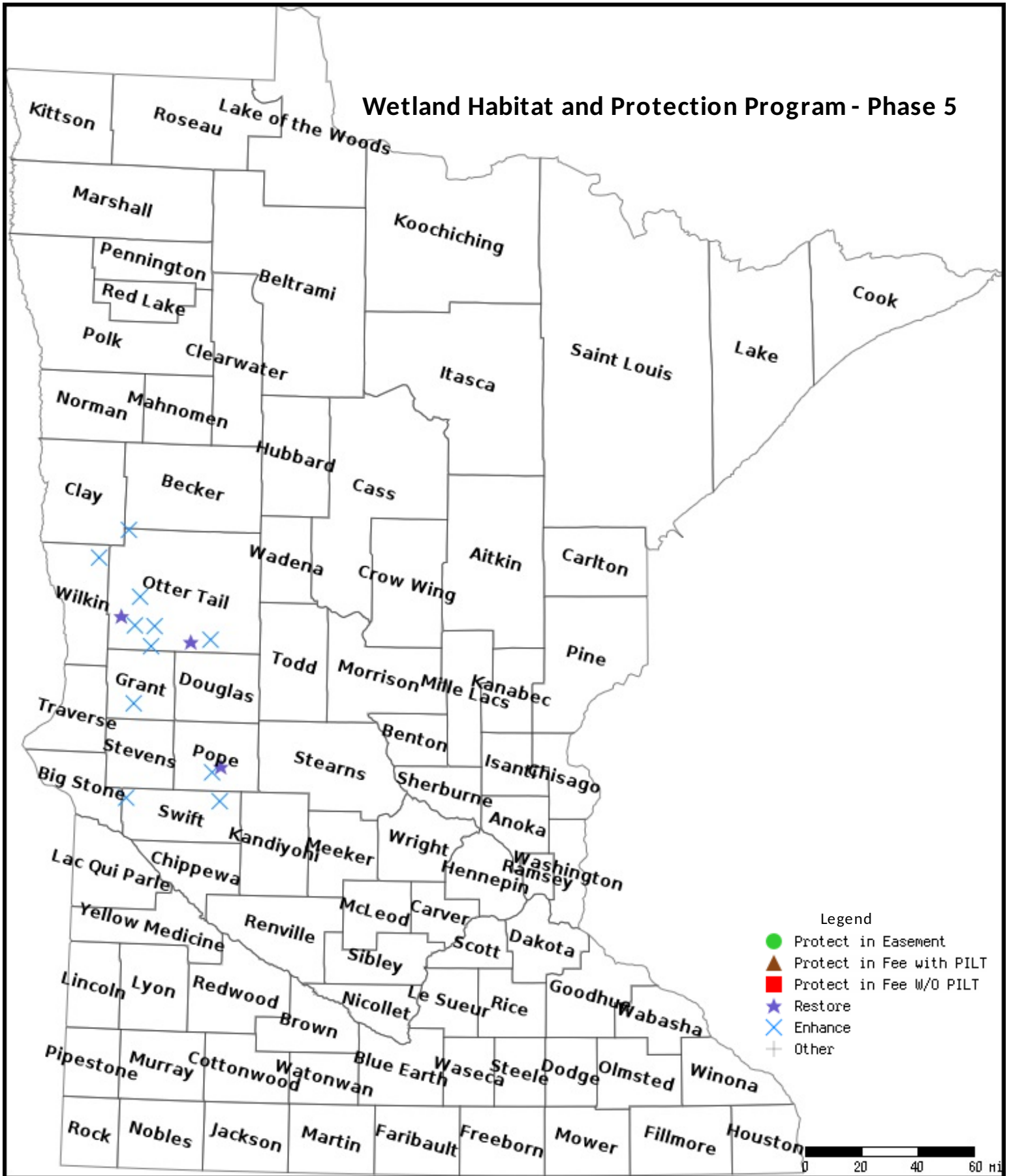
No parcels with an activity type protect and has buildings.

Section 3 - Other Parcel Activity

No parcels with an other activity type.

Parcel Map

Wetland Habitat and Protection Program - Phase 5



Data Generated From Parcel List



Wetland Habitat Protection and Restoration Program

Phase 5

The Minnesota Land Trust is requesting \$5,566,400 for the third phase of the Wetland Habitat Protection and Restoration Program.

The Land Trust will secure 2,600 acres of permanent conservation easements that target high priority wetland habitat complexes within Minnesota's Prairie and Forest/Prairie Transition sections. Using our innovative landowner bid model, the program will maximize conservation benefit and leverage \$900,000 in private easement value.

In partnership with the U.S. Fish and Wildlife Service's Partners for Fish and Wildlife Program, the Land Trust will also restore/enhance 1,518 acres of important wetland and prairie habitat on private lands protected through conservation easement.

How Does the Program Support State Goals?

This program will target high-priority wetlands and associated upland habitat. This advances a primary goal identified by the Statewide Wildlife Action Plan through stabilization of Species in Greatest Conservation Need. Protection and restoration of wetlands and grasslands are primary strategies identified in Minnesota's Prairie Conservation Plan, the Long Range Duck Recovery Plan, and the Long Range Plan for the Ring-Necked Pheasant in Minnesota.



Rebecca Field

Outdoor Heritage Fund Request:

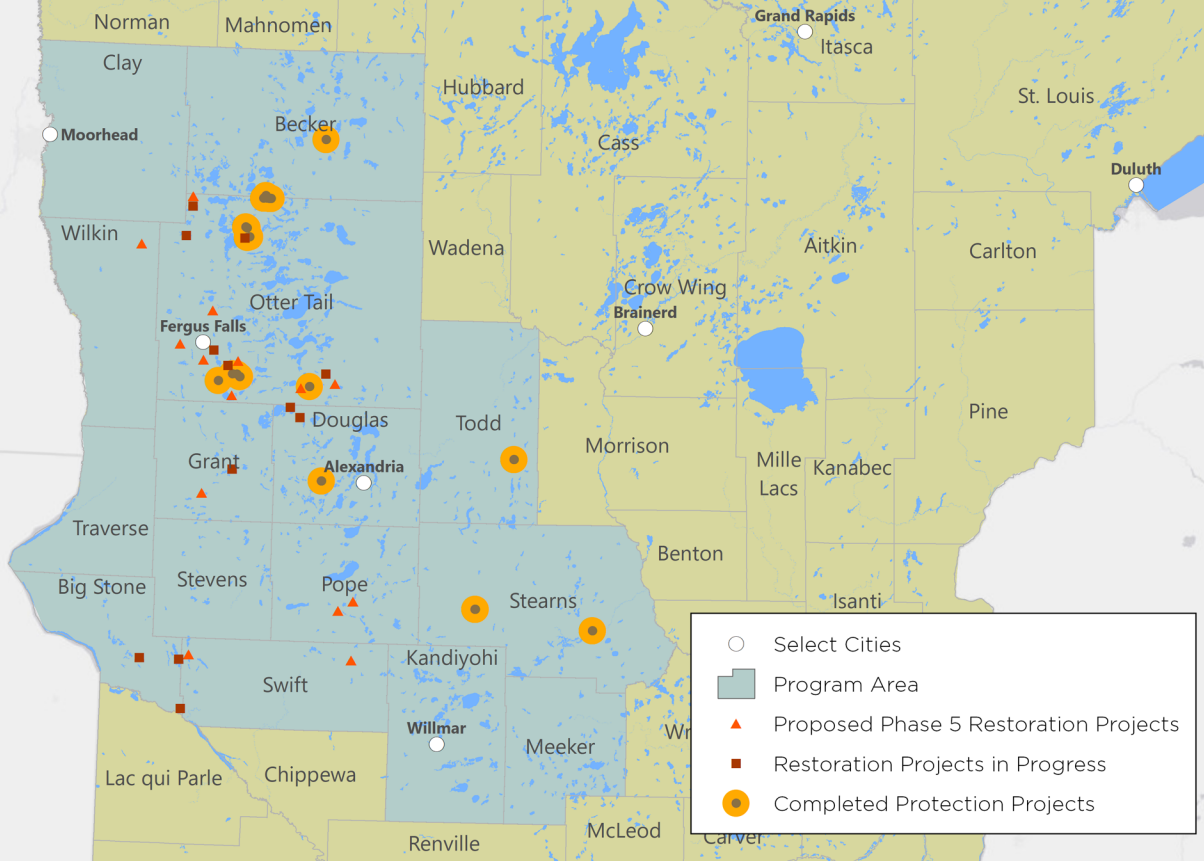
\$5,566,400 to protect 2,600 acres and restore/enhance 1,518 acres.

The Minnesota Land Trust is a nationally-accredited conservation organization with a twenty-seven year history of protecting Minnesota's most unique wildlife habitats around the state.

For more information about this proposal, please contact Wayne Ostlie, Director of Land Protection, at 651-917-6292 or wostlie@mnland.org.

What Are the Outcomes of the Program?

- Healthy wetland habitat complexes and associated populations of waterfowl, upland birds, and species in greatest conservation need.
- Improved water quality.
- Increased participation of private landowners in habitat projects.
- Enhancement of prior public investment in wetland protection and restoration.



What has Been Accomplished to Date in the Program?

Complete (Phase I):

Completed **14** conservation easements, protecting **1,962 acres** of habitat and **75,106 feet of shoreline** (~14.2 miles).

In Progress (Phases II and III):

Six conservation easements have been completed protecting **834 acres** of habitat and **58,281 feet of shoreline** (11 miles). The second and third phases of this program are already fully subscribed.

Planned (Phase IV):

Starting in July, we will begin the fourth phase of the program to protect 800 acres and restore/enhance an additional 978 acres of habitat.

The Wetland Habitat Protection Program has generated considerable interest among landowners in protecting these places. **Collectively these landowners have contributed over \$1.5 million in easement value as leverage to the \$3 million investment from the Outdoor Heritage Fund.**

Mission

The Minnesota Land Trust protects and restores Minnesota's most vital natural lands in order to provide wildlife habitat, clean water, outdoor experiences, and scenic beauty for generations to come.

Contact Us

Minnesota Land Trust

2356 University Ave. W.
Suite 240
St. Paul, MN 55114

(651) 647-9590

mnland@mnland.org

Visit us on the web at
www.mnland.org





MINNESOTA LAND TRUST

A Decision Support Tool for Prioritizing Conservation Easement Opportunities

The Minnesota Land Trust often employs within its conservation program areas an RFP (Request for Proposals) model to both identify high-quality projects and introduce a level of competition into the easement acquisition process. Below, we briefly discuss how the system works and the framework put in place to sort the varied opportunities that come before us.

How the Ranking System Works

The parcel ranking framework employed through the Minnesota Land Trust's RFP process is intended as a **decision support tool** to aid in identifying, among the slate of landowners submitting bids for conservation easements, the most ecologically significant opportunities for the price. Using this framework, the Land Trust and its partners use an array of weighted data sets tailored to the specific circumstances inherent in a program area to identify those worthy of consideration.

It is important to note that this parcel ranking framework enables the Land Trust to rank projects *relative* to one another. That's important to do, but it's also important to understand how a project (or suite of projects) relates to the ideal situation (i.e., a project that is of exceptional size, condition and superb landscape context). If, for example, an RFP generated 20 proposals in a program area, the framework would effectively sift among them and identify the relatively good from those relatively bad. However, this information alone would not determine whether any of those parcels were of sufficient quality to pursue for protection (all may be of insufficient quality to warrant expenditure of funds). To solve this problem and make sure ranked projects are high priorities for conservation, we step back and evaluate them relative to the ideal - i.e., is each project among the best opportunities for conservation we can expect to find in the program area?

As part of its proposals to LSOHC, the Land Trust included easement sign-up criteria that laid out at a general level the framework utilized by the organization. Below is a more detailed description of the process the Land Trust utilizes in ranking potential parcels relative to one another, and identifying those with which a conservation easement will be pursued. We also include a ranking form illustrating the representative weighting applied to each criteria. These weightings will be refined as we move forward in applying this approach in each program area.

The Framework

We evaluate potential projects based on two primary factors: ecological significance and cost. Both are assessed independent of one another.

Factor 1: Ecological Significance

The Ecological Significance score is determined by looking at 3 subfactors, each weighted equally (as a default). Each of these constitutes 1/3 of the total ecological significance score.

Subfactors:

- **Size or Quantity** – the area of the parcel to be protected (how big is it?), length of shoreline, etc. The bigger the better.
- **Condition or Quality** – the condition of the natural communities and/or target species found on a parcel. The higher quality the better.
- **Landscape Context** – what’s around the parcel, both ecologically and from a protected status standpoint. The more ecologically intact the surrounding landscape the better; the extent to which a parcel builds off of other protected lands to form complexes or corridors, the better.

Note that we have the ability to emphasize one subfactor over another if the specific circumstances warrant it, but we begin with a default standard at the onset. At present, all of our geographies are using the default standard.

Indicators:

A suite of weighted indicators is used to score each parcel relative to each of the above subfactors. Indicators are selected based on their ability to effectively inform the scoring of parcels relative to each of the respective subfactors. Weightings for each criterion are assessed and vetted to ensure that a set of indicators for each subfactor produces meaningful results, then applied across each of the proposed parcels. Finally, we vet and make improvements to the scoring matrix when we identify issues or circumstances where results seem erroneous.

Data sets used for this purpose must offer wall-to-wall coverage across the program area to ensure that bias for or against parcels does not creep into the equation. Where gaps in such coverages exist, we attempt to fill them in to the extent feasible (via field inventory, etc.). Finally, we vet and make improvements to the scoring matrix when we identify issues or circumstances where results seem erroneous.

Factor 2: Cost

Cost is a second major factor used in our consideration of parcels. Although ecological significance is *the* primary factor in determining the merits of a project, our RFP programs also strive to make the greatest conservation impact with the most efficient use of State funds. As such, we look at the overall cost of each project relative to its ecological significance; we also ask landowners to consider donating all or some of their easement value to the cause and to better position their proposals. Many landowners participate in that fashion.

Cost, as a primary factor, is assessed independently of the ecological factors. Given equal ecological significance, a project of lower cost will be elevated over those of higher cost in the ranking. That said, exceptionally high quality projects are likely to be pursued even if no or modest landowner donation is put forward. Alternatively, there are projects offered as full donations that are not moved forward because their ecological significance is not acceptable. The degree to which cost factors into the ranking of parcels relative to one another is made on a case-by-case basis.

| MINNESOTA LAND TRUST WETLANDS PROTECTION PROGRAM Conservation Easement Selection Worksheet | | SITE 1 | SITE 2 | SITE 3 | SITE 4 | SITE 5 | SITE 6 | SITE 7 | SITE 8 | SITE 9 | SITE 10 | SITE 11 | SITE 12 | Notes |
|--|---|-------------|-------------|-------------|-------------|-------------|-------------|-------------|-------------|-------------|-------------|-------------|-------------|-------------|
| COUNTY | | | | | | | | | | | | | | |
| 100 Pts | ECOLOGICAL SIGNIFICANCE | | | | | | | | | | | | | |
| Weighting Factor | Size/Abundance of Habitat (33 points) | | | | | | | | | | | | | |
| | a) Size (33 pts): Acres of Habitat to be Protected by an Easement | | | | | | | | | | | | | |
| | SUBTOTAL: | 0 | 0 | 0 | 0 | 0 | 0 | 0 | 0 | 0 | 0 | 0 | 0 | 0 |
| Weighting Factor | Quality of Natural Resources to be Protected by the Easement (33 points) | | | | | | | | | | | | | |
| | a) Habitat Quality (28 pts): Quality of Existing Ecological Systems (Terrestrial & Aquatic) | | | | | | | | | | | | | |
| | b) Imperiled Species (5 pts): Occurrence of Documented Rare Species on Parcel | | | | | | | | | | | | | |
| | SUBTOTAL: | 0 | 0 | 0 | 0 | 0 | 0 | 0 | 0 | 0 | 0 | 0 | 0 | 0 |
| Weighting Factor | Landscape Context (34 points) | | | | | | | | | | | | | |
| | Current Status (30 points) | | | | | | | | | | | | | |
| | a) Protection Context (15 points) | | | | | | | | | | | | | |
| | i. Size of Contiguous Protected Lands (8 pts) | | | | | | | | | | | | | |
| | ii. Amount of Protected Lands within 3 miles of Property | | | | | | | | | | | | | |
| | : Protected Land within 0.5 miles of Property (4 pts) | | | | | | | | | | | | | |
| | : Protected Land 0.5-3 miles from Property (3 pts) | | | | | | | | | | | | | |
| | b) Ecological Context (15 points) | | | | | | | | | | | | | |
| | i. Size of Contiguous Ecological Habitat (8 pts) | | | | | | | | | | | | | |
| | ii. Amount of Ecological Habitat within 3 miles of Property | | | | | | | | | | | | | |
| | : Ecological Habitat within 0.5 miles of Property (4 pts) | | | | | | | | | | | | | |
| | : Ecological Habitat 0.5-3 miles from Property (3 pts) | | | | | | | | | | | | | |
| | Future Potential (4 points) | | | | | | | | | | | | | |
| | a) Conservation Plan Context (2 pts) | | | | | | | | | | | | | |
| | b) Amount of Existing Activity (2 pts) | | | | | | | | | | | | | |
| | SUBTOTAL: | 0 | 0 | 0 | 0 | 0 | 0 | 0 | 0 | 0 | 0 | 0 | 0 | 0 |
| | TOTAL ECOLOGICAL VALUE POINTS | 0 | 0 | 0 | 0 | 0 | 0 | 0 | 0 | 0 | 0 | 0 | 0 | 0 |
| COST | | | | | | | | | | | | | | |
| | i. Bid amount (\$)/acre | \$ - | \$ - | \$ - | \$ - | \$ - | \$ - | \$ - | \$ - | \$ - | \$ - | \$ - | \$ - | \$ - |
| | ii. Estimated donative value (\$)/acre | \$ - | \$ - | \$ - | \$ - | \$ - | \$ - | \$ - | \$ - | \$ - | \$ - | \$ - | \$ - | \$ - |
| | TOTAL ACQUISITION COST (\$) | \$ - | \$ - | \$ - | \$ - | \$ - | \$ - | \$ - | \$ - | \$ - | \$ - | \$ - | \$ - | \$ - |

| KEY | |
|-----|----------|
| | Priority |
| | Possible |
| | Out |

WETLAND HABITAT PROTECTION PROGRAM

Conservation Easement Selection Worksheet – Scoring and Criteria

Three primary factors when taken together provide a good estimate of long-term viability for biodiversity: 1) **Size** of the occurrence (species population or example of natural community), 2) **Condition** of the occurrence, and 3) its **Landscape Context**. This framework is used widely across the world by a large number of conservation organizations and agencies and here in Minnesota by the Minnesota DNR, The Nature Conservancy and others. The Minnesota Land Trust has adopted this practice as well.

In this summary document, we provide an overview of the framework used by the Land Trust in assessing and prioritizing land protection opportunities before the organization.

- 1. Habitat Size (33 points):** Parcels are scored based on acres of habitat to be protected through the easement relative to the largest parcels available for protection in the program area. Although size can pertain to species populations, the size of such populations is often constrained by available habitat. In addition, very little information pertaining to the size of species populations on a given property typically exists, making any determination suspect. Habitat size is a valid indicator in these circumstances.

Scoring: Parcels are scored by how they fall relative to twelve size classes of habitat:

| Points | Acres of Habitat on Parcel |
|--------|----------------------------|
| 0 | 1-39 |
| 3 | 40-49 |
| 6 | 50-69 |
| 9 | 70-99 |
| 12 | 100-139 |
| 16 | 140-189 |
| 20 | 190-249 |
| 25 | 250-319 |
| 33 | 320 or greater |

- 2. Condition of Natural Resources (33 points):** Parcels are scored based on the condition of occurrences of ecological communities (habitat) and imperiled species if known. As with Habitat Size above, population data for imperiled species is often minimal on private lands. As such, the condition of score is heavily influenced by the condition of natural communities on a property. However, we do allocate a modest level of points to the presence of imperiled species if they have been documented on a property.

Scoring: Parcels are scored based on the condition of focal ecological community targets – both terrestrial and freshwater – and presence of imperiled species on the property, as such:

a) Habitat Quality (30 points) – The Minnesota Biological Survey (“MBS”) native plant community (“NPC”) element occurrence ranking framework and the Minnesota Scientific and Natural Areas site evaluation guide are used to score habitat quality on parcels, as such:

| Points | Description |
|--------|---|
| 0 | <ul style="list-style-type: none"> • Only NPC present has a D element occurrence ranking • Site ranked “below threshold” for biodiversity significance by MBS |
| 8 | <ul style="list-style-type: none"> • Less than 50% of parcel is C-ranked, remainder is ranked lower than C |
| 15 | <ul style="list-style-type: none"> • Half of parcel is C-ranked, the rest is D-ranked or lower • Part of parcel has moderate biodiversity significance, remainder is lower than moderate |
| 25 | <ul style="list-style-type: none"> • Half of parcel is C-ranked, remainder is D-ranked or lower • All of parcel has moderate biodiversity significance or higher |
| 28 | <ul style="list-style-type: none"> • Half of parcel is C-ranked, remainder is ranked higher than C • Part of parcel has outstanding biodiversity significance • Parcel or part of parcel has high biodiversity significance • Parcel includes one or more MBS-identified “lakes of biodiversity significance” |
| 30 | <ul style="list-style-type: none"> • More than half of parcel has an A, B, AB, or BC ranking • All of parcel identified has outstanding biodiversity significance |

b) Imperiled Species (5 points) – Scoring of the parcel is based on species abundance as measured by occurrences documented on the property by the Natural Heritage Information System, as follows:

| Points | Occurrences |
|--------|-------------|
| 1 | 1 |
| 2 | 2 |
| 3 | 3 or more |

3. Landscape Context (33 points): Parcels are scored based current ecological context of the property and protected lands surrounding it; in addition, points are also allocated based on the likelihood that lands around a parcel will be protected going forward based on the identification of these adjacent lands in respective conservation lands.

Scoring: Parcels are scored based as follows:

a) Protection Context (15 points) – Is calculated based on two subfactors, including size of contiguous protected land (if any) and amount of protected land within 3 miles of the property. Here, we look at two subfactors:

- i) Amount of protected land (acres) contiguous with the parcel. Scoring of the parcel is based on the amount of protected land contiguous to the parcel (8 points), as follows:

| Points | Acres Contiguous Protected Land |
|--------|---------------------------------|
| 0 | <1 |
| 1 | 1-39 |
| 3 | 40-79 |
| 5 | 80-119 |
| 7 | 120-199 |
| 8 | 200 or greater |

- ii) Amount of protected lands within a five-mile radius of the parcel, whether contiguous or not (7 points). Blocks of habitat nearby but not contiguous can also play a very significant role in the maintenance of biodiversity over the long term. In this assessment, we weight protected lands within one-half mile of the parcel higher than those farther removed and score them separately.

Amount (acres) of protected land within one-half mile of property (4 points), scored as follows:

| Points | Acres Protected Land within 1/2 mile |
|--------|--------------------------------------|
| 0 | <1 |
| 1 | 1-79 |
| 2 | 80-199 |
| 3 | 200-299 |
| 4 | 300 or greater |

Amount (acres) of protected land within between one-half mile and five miles of the protected property (3 points), scored as follows:

| Points | Acres Protected Land 1/2 mile to 5 miles |
|--------|--|
| 0 | <40 |
| 1 | 40-999 |
| 2 | 1,000-9,999 |
| 3 | 10,000 or greater |

- b) Ecological Context** (15 points) – As with Protection context, ecological context is calculated based on two subfactors, including size of contiguous ecological habitat (if any) and amount of ecological habitat within five miles of the property.

- i) Amount of ecological habitat (acres) contiguous with the parcel, providing species with direct access to larger blocks of permanent habitat (8 points). Scoring of the parcel is based on the amount of natural ecological habitat contiguous to the parcel, as follows:

| Points | Acres Contiguous Ecological Habitat |
|--------|-------------------------------------|
| 1 | <80 |
| 2 | 80-249 |
| 3 | 250-499 |
| 4 | 500-749 |
| 5 | 750-999 |
| 6 | 1,000-2,999 |
| 7 | 3,000-4,999 |
| 8 | 5,000 or greater |

- ii) Amount of ecological habitat within a five-mile radius of the parcel, whether contiguous or not (7 points). Blocks of habitat nearby, whether contiguous or not play a very significant role in the maintenance of biodiversity over the long term. In this assessment, we weight ecological habitat within ½ mile of the parcel higher than that farther removed, and score them separately.

Percentage of land within one-half mile of protected property that has natural land cover (4 points), scored as follows:

| Points | Percent of ½-mile Radius with Ecological Habitat |
|--------|--|
| 1 | 1-23 |
| 2 | 24-48 |
| 3 | 49-73 |
| 4 | 74-100 |

Percentage of land one-half to five miles of the property (3 points) that has natural land cover (3 points), scored as follows:

| Points | Percent of ½-mile to 5-mile radius with Ecological Habitat |
|--------|--|
| 1 | 1-32 |
| 2 | 33-65 |
| 3 | 66-100 |

- c) **Future Potential** (4 points) – The degree to which the area within which a parcel lies has been identified as a priority for conservation action and the degree to which action is being implemented in that area is a direct indicator of the long-term potential for maintenance of biodiversity associated with a parcel. Lands affiliated with priority areas are more likely to be complemented with additional levels of nearby protected lands than those outside of priority

areas. In areas experiencing high levels of development, this factor may carry a significant amount of weight in setting protection priorities.

Scoring: Parcels are scored based on their position relative to priority areas identified in statewide or local planning efforts.

| Points | Description |
|---------------|---|
| 0 | Parcel not within priority area |
| 1 | Parcel within priority area of one plan |
| 2 | Parcel within priority areas of two plans |
| 3 | Parcel within priority areas of three plans or more |