



# Lessard-Sams Outdoor Heritage Council

## Fiscal Year 2021 / ML 2020 Request for Funding

Date: May 29, 2019

Program or Project Title: Lower Wild Rice River Corridor Habitat Restoration - Request III

Funds Requested: \$5,118,300

Manager's Name: Kevin Ruud

Title: District Administrator

Organization: Wild Rice Watershed District

Address: 11 East 5th Avenue

City: Ada, MN 56510

Office Number: 218-784-5501

Email: kevin@wildricewatershed.org

Website: www.wildricewatershed.org/

County Locations: Norman

Eco regions in which work will take place:

- Prairie

Activity types:

- Protect in Easement

Priority resources addressed by activity:

- Wetlands
- Forest
- Prairie
- Habitat

### Abstract:

Channelization of the Lower Wild Rice River in the early 1900s converted 50 miles of sinuous river channel to 23 miles of straight channel and resulted in the loss of several thousand acres of wetland and grassland habitat within the river's corridor. Through a partnership between the Wild Rice Watershed District and the Minnesota Board of Water and Soil Resources, this proposal will permanently protect 1,200 acres of private lands in easements. This phase represents a model approach to river corridor acquisition and is critical to advancing the largest river restoration project ever proposed in Minnesota.

### Design and scope of work:

Rivers and streams in the Red River Basin were straightened, ditched, cleared, and snagged with a goal of improving drainage. These activities destroyed hundreds of miles of aquatic habitat and eliminated thousands of acres of riparian forest, wetland and grassland. These habitat losses continue and have directly resulted in reduced fish and wildlife populations within the channelized reaches of rivers.

The Red River Drainage Commission channelized the Lower Wild Rice River in the late 1800's with further channel "improvement" completed by the U.S. Army Corps of Engineers in the 1950's. The channelized reach of the Wild Rice River currently provides little functional aquatic or riparian corridor habitat and reduces connectivity between the lower 49 miles of the river to the upstream 130 miles. The vision for the project includes establishment of a ½-mile wide protected corridor along the river channel, setting back existing spoil banks, reconnecting oxbows, construction of a natural meandering river channel, and restoration of riparian wetland and prairie plant communities.

The Wild Rice Watershed District (WRWD) and the MN Board of Water and Soil Resources (BWSR) have approved a Memorandum of Understanding which details responsibilities for easement acquisition. The partnership between the WRWD and BWSR will use the Reinvest In Minnesota (RIM) Program to secure, maintain, and monitor easements within the corridor.

Since this is a large project the river has been divided into Reaches A to F (attached illustration). This funding request will target acquisition to Reach C, D and E of the corridor. These reaches were selected due to expressed landowner interest and the high percentage of cultivated land. While land acquisition will be targeted to Reach C, D and E, other opportunities to protect lands within or adjacent to the main corridor (A-F) will also be considered. A total of 1,200 acres of land is targeted for acquisition with this proposal. The previous proposals (M.L. 2015/2019) targeted acquisition to the lands within Reach C.

Once acquisition is complete, future channel rehabilitation phases of the project will be completed with the assistance of MN DNR and U.S. Army Corps of Engineers (USACE). The WRWD will be the local sponsor responsible for final design, engineering, and construction of the project.

With the funding allocation from 2015, WRWD has coordinated with BWSR to develop and sign a Memorandum of Understanding for the use of the RIM Outside Easement Program. WRWD has received applications and is processing RIM easements for approximately 450 acres out of the 480 acres that received funding from the 2015 accomplishment plan. WRWD has developed marketing materials to utilize in soliciting additional applications when the 2019 funds becomes available in July. Additionally, WRWD has requested Section 1135 assistance from the USACE to begin a feasibility evaluation of the channel restoration and setback levees alignment proposed in Phase 2 and Phase 3 of the project.

### **Which sections of the Minnesota Statewide Conservation and Preservation Plan are applicable to this project:**

- H2 Protect critical shoreland of streams and lakes
- H6 Protect and restore critical in-water habitat of lakes and streams

### **Which other plans are addressed in this proposal:**

- Minnesota Prairie Conservation Plan
- Red River of the North Fisheries Management Plan

### **Describe how your program will advance the indicators identified in the plans selected:**

Objective 1 of the Red River of the North Fisheries Management Plan is to "Establish and maintain stable stream channels." Additional information within this objective state that "These habitat losses continue today and have directly resulted in reduced fish and wildlife populations within channelized reaches of river corridors. Restoration and enhancement of channelized river segments is a top priority in the Red River basin."

From the Minnesota Prairie Plan: "Restoring the natural functioning of these channelized stream segments while allowing legal agricultural drainage will be a major challenge for the future. Another widespread concern about the streams and ditches in the Prairie Region is the cultivation of lands immediately adjacent to waterways." This project will restore the natural function of the Wild Rice River while protecting and restoring upland habitat along the corridor.

### **Which LSOHC section priorities are addressed in this proposal:**

#### **Prairie:**

- Protect, enhance, or restore existing wetland/upland complexes, or convert agricultural lands to new wetland/upland habitat complexes

### **Describe how your program will produce and demonstrate a significant and permanent conservation legacy and/or outcomes for fish, game, and wildlife as indicated in the LSOHC priorities:**

This project will permanently protect and restore lands along the Wild Rice River corridor. Currently, none of the lands targeted in this proposal are protected. Within the primary reaches targeted in this proposal, 73% of the acres are classified as cultivated crops. The other primary land classifications within these reaches are woody wetland (16% of acres) and open water (5% of acres).

### **Describe how the proposal uses science-based targeting that leverages or expands corridors and complexes, reduces fragmentation or protects areas identified in the MN County Biological Survey:**

Restoration of the Lower Wild Rice River Corridor is listed as a high priority project on the MN DNR state river restoration priority list. The Minnesota Prairie Plan also lists restoration of channelized prairie river segments of cultivated lands immediately adjacent to streams and ditches as critical challenges. One Minnesota County Biological Survey site of moderate biodiversity significance is located within the Lower Wild Rice River Corridor.

Reference stream reaches established by the MN DNR will be used to set the geometry of the restored stream channels.

## How does the proposal address habitats that have significant value for wildlife species of greatest conservation need, and/or threatened or endangered species, and list targeted species:

This project is the land acquisition phase of a long term project that will restore 50 miles of river and over 6,500 acres of habitat for associated fish and wildlife communities. In addition to the direct habitat benefits within the project area, fish and wildlife populations downstream of the project will benefit through water quality improvements. The Wild Rice River and associated prairie and forest lowland habitats were identified as key habitats for species of greatest conservation need in the Red River Prairie ecoregion. Key among aquatic species is the Lake Sturgeon, a species of special concern. The Wild Rice River provides critical sturgeon habitat and is a primary reintroduction waterbody where Lake Sturgeon have been stocked. Restoration of Wild Rice River habitat will help ensure successful reestablishment of Lake Sturgeon populations in the Red River basin.

This project will also likely benefit mussel and insect populations in the Wild Rice River. Two species of caddisfly and two species of mussels, black sandshell and fluted-shell are listed as species of special concern and known to be present in the upstream reaches of the Wild Rice River. Acquisition and restoration of the stream and associated riparian wetlands will also improve habitat for gamefish and more than 50 other fish species present in other reaches of the Wild Rice River watershed.

## Identify indicator species and associated quantities this habitat will typically support:

Warmwater fisheries surveys conducted by MN DNR generate standardized catch rates (fish captured per unit of effort). The following species can be used as indicators: Sauger 2lbs/acre, Channel Catfish 116/acre, Mussel species 8,000/acre.

According to the research literature and personal observations in Minnesota, prairie chickens require a minimum of 320 acres of high quality grasslands with no areas hostile to grassland wildlife (woodlots, farmsteads, etc) near these grasslands. For every 320 acre patch of high quality grassland in the prairie chicken range in the northwest part of the state, we can expect there to be a lek, or booming ground. The average size of booming grounds in Minnesota is roughly 11 males.

The breeding territory size of bobolinks and grasshopper sparrows is 1.7 and 2.1 acres respectively in high quality habitat in Wisconsin. If all of the habitat was occupied, a 100 acres of habitat could potentially hold approximately 60 and 48 pairs of bobolinks and grasshopper sparrows respectively.

Research from the University of Minnesota has shown that it takes approximately 30 milkweed plants to result in one monarch butterfly contributing to the overwintering Mexican population. Grasslands can have between 100-250 milkweed plants per acre. An acre of restored or enhanced grassland could potentially contribute 3 to 8 monarchs to the population.

By looking at the ratios of CRP acres in Minnesota to pheasant harvest, we can estimate that every three acres of grassland habitat has the potential to produce one harvestable pheasant rooster.

## Outcomes:

### Programs in prairie region:

- Key core parcels are protected for fish, game and other wildlife *The outcomes of the Lower Wild Rice River corridor project will be a stable stream with permanently protected and restored riparian corridor. This will significantly improve upland and aquatic habitat for fish and wildlife within the immediate corridor. Also, this project will improve water quality and provide substantial benefits extending to the entire watershed.*

## How will you sustain and/or maintain this work after the Outdoor Heritage Funds are expended:

Once a RIM easement is acquired, BWSR is responsible for monitoring and enforcement into perpetuity. The BWSR partners with local SWCDs to carry-out oversight, monitoring and inspection of its conservation easements. Easements are inspected for the first five consecutive years beginning in the year after the easement is recorded. Thereafter, on-site inspections are performed every three years and compliance checks are performed in the other two years. SWCDs report to BWSR on each site inspection conducted and partners' staff document findings. A non-compliance procedure is implemented when potential violations or problems are identified.

Perpetual monitoring and enforcement costs have been calculated at \$6,500 per easement. This value is based on using local SWCD staff for monitoring and landowner relations and existing enforcement authorities. The amount listed for Easement Stewardship cover costs of the SWCD regular monitoring, BWSR oversight, and any enforcement necessary.

## Explain the things you will do in the future to maintain project outcomes:

Year	Source of Funds	Step 1	Step 2	Step 3
2020 - Ongoing	Stewardship Account	Inspection first 5 years; then every 3rd year	Corrective actions on any violations	Enforcement action taken by MN Attorney General Office
2020 - Ongoing	Landowner Responsibility	Maintain compliance with easement terms		

## What is the degree of timing/opportunistic urgency and why it is necessary to spend public money for this work as soon as possible:

Land acquisition is the critical first step in the restoration of over 6,500 acres of riparian habitat and converting 23 miles of ditch to over 50 miles of river channel. Once land acquisition is complete, Army Corps of Engineers will be approached to contribute much of the channel restoration implementation under the Section 1135 program. Currently, landowners along the corridor are very interested in implementing the proposed project. If funding for this corridor rehabilitation is not secured, the opportunity to rehabilitate this reach of the Wild Rice River Corridor will be lost due to the uncertainty of future land and crop prices and continued landowner interest.

## Does this program include leverage in funds:

Yes

The WRWD has agreed to contribute an amount equal to 20% of the offered RIM payments to match the LSOHC funding. This amounts to an approximately 15% match to the LSOHC funds.

## Relationship to other funds:

- Not Listed

## Describe the relationship of the funds:

Not Listed

## Per MS 97A.056, Subd. 24, Any state agency or organization requesting a direct appropriation from the OHF must inform the LSOHC at the time of the request for funding is made, whether the request is supplanting or is a substitution for any previous funding that was not from a legacy fund and was used for the same purpose:

This funding request is not supplanting existing funding or a substitution for any previous funding.

## Describe the source and amount of non-OHF money spent for this work in the past:

Not Listed

## Activity Details

### Requirements:

If funded, this proposal will meet all applicable criteria set forth in MS 97A.056 - **Yes**

Is the land you plan to acquire (easement) free of any other permanent protection - **Yes**

Do you anticipate federal funds as a match for this program - **No**

### Land Use:

Will there be planting of corn or any crop on OHF land purchased or restored in this program - **Yes**

Explain

In certain circumstances food plots for wildlife are an allowable use on RIM easements and must be part of an approved Conservation Plan. Food plots on narrow buffers, steep slopes and wet areas are not allowed. RIM policy limits food plots to 10% of

the total easement area or 5 acres whichever is smaller. There is no cost share for establishment of food plots and upon termination the landowners must reestablish the vegetation as prescribed in the Conservation Plan at their own expense. Food plots are a rarely selected option by landowners, to date only 2.2% of RIM easements have food plots.

Will the eased land be open for public use - **No**

Are there currently trails or roads on any of the acquisitions on the parcel list - **Yes**

Describe the types of trails or roads and the allowable uses:

This appropriation is funding a program that will have a parcel list identified at a later time. Roads or trails are typically excluded from the easement area if they serve no beneficial purpose to easement maintenance, monitoring, or enforcement. Existing trails and roads are identified during the easement acquisition process. Some roads and trails, such as agricultural field accesses, are allowed to remain.

Will the trails or roads remain and uses continue to be allowed after OHF acquisition - **Yes**

How will maintenance and monitoring be accomplished:

The easements secured under this project will be managed as part of the MN Board of Water and Soil Resources (BWSR) RIM Reserve Program that has over 6,500 easements currently in place. Easements are monitored annually for each of the first 5 years and then every 3rd year after that. BWSR, in cooperation with Soil and Water Conservation Districts (SWCD), implement a stewardship process to track, monitor quality and assure compliance with easement terms.

Under the terms of the Reinvest In Minnesota (RIM) Easement Program, landowners are required to maintain compliance with the easement. A conservation plan is developed with the landowner and maintained as part of each easement. Basic easement compliance costs are borne by the landowner, periodic enhancements may be cost shared from a variety of sources.

Will new trails or roads be developed or improved as a result of the OHF acquisition - **Yes**

Describe the types of trails or roads and the allowable uses:

This appropriation is funding a program that will have a parcel list identified at a later time. Roads or trails are typically excluded from the easement area if they serve no beneficial purpose to easement maintenance, monitoring, or enforcement. Existing trails and roads are identified during the easement acquisition process. Some roads and trails, such as agricultural field accesses, are allowed to remain.

How will maintenance and monitoring be accomplished:

The easements secured under this project will be managed as part of the MN Board of Water and Soil Resources (BWSR) RIM Reserve Program that has over 6,500 easements currently in place. Easements are monitored annually for each of the first 5 years and then every 3rd year after that. BWSR, in cooperation with Soil and Water Conservation Districts (SWCD), implement a stewardship process to track, monitor quality and assure compliance with easement terms.

Under the terms of the Reinvest In Minnesota (RIM) Easement Program, landowners are required to maintain compliance with the easement. A conservation plan is developed with the landowner and maintained as part of each easement. Basic easement compliance costs are borne by the landowner, periodic enhancements may be cost shared from a variety of sources.

## Accomplishment Timeline

Activity	Approximate Date Completed
Obtain applications from eligible landowners	June 30, 2021
Allocation to specific parcels	July 30, 2021
Easements recorded	June 30, 2024
Restorations completed and final report submitted	June 30, 2029

# Budget Spreadsheet

**Total Amount of Request: \$5,118,300**

## Budget and Cash Leverage

BudgetName	LSOHC Request	Anticipated Leverage	Leverage Source	Total
Personnel	\$246,100	\$0		\$246,100
Contracts	\$71,400	\$0		\$71,400
Fee Acquisition w/ PILT	\$0	\$0		\$0
Fee Acquisition w/o PILT	\$0	\$0		\$0
Easement Acquisition	\$4,254,300	\$744,000	Wild Rice Watershed District	\$4,998,300
Easement Stewardship	\$221,000	\$0		\$221,000
Travel	\$8,300	\$0		\$8,300
Professional Services	\$267,700	\$0		\$267,700
Direct Support Services	\$34,000	\$0		\$34,000
DNR Land Acquisition Costs	\$0	\$0		\$0
Capital Equipment	\$0	\$0		\$0
Other Equipment/Tools	\$11,900	\$0		\$11,900
Supplies/Materials	\$3,600	\$0		\$3,600
DNR IDP	\$0	\$0		\$0
<b>Total</b>	<b>\$5,118,300</b>	<b>\$744,000</b>		<b>\$5,862,300</b>

## Personnel

Position	FTE	Over # of years	LSOHC Request	Anticipated Leverage	Leverage Source	Total
0.2 FTE	0.20	5.00	\$100,600	\$0		\$100,600
Program Management	0.05	5.00	\$30,000	\$0		\$30,000
Easement Processing	0.44	3.00	\$91,500	\$0		\$91,500
Engineering/Eco Services	0.08	3.00	\$24,000	\$0		\$24,000
<b>Total</b>	<b>0.77</b>	<b>16.00</b>	<b>\$246,100</b>	<b>\$0</b>		<b>\$246,100</b>

## Budget and Cash Leverage by Partnership

BudgetName	Partnership	LSOHC Request	Anticipated Leverage	Leverage Source	Total
Personnel	WRWD	\$100,600	\$0		\$100,600
Contracts	WRWD	\$0	\$0		\$0
Fee Acquisition w/ PILT	WRWD	\$0	\$0		\$0
Fee Acquisition w/o PILT	WRWD	\$0	\$0		\$0
Easement Acquisition	WRWD	\$0	\$744,000	Wild Rice Watershed District	\$744,000
Easement Stewardship	WRWD	\$0	\$0		\$0
Travel	WRWD	\$0	\$0		\$0
Professional Services	WRWD	\$267,700	\$0		\$267,700
Direct Support Services	WRWD	\$0	\$0		\$0
DNR Land Acquisition Costs	WRWD	\$0	\$0		\$0
Capital Equipment	WRWD	\$0	\$0		\$0
Other Equipment/Tools	WRWD	\$0	\$0		\$0
Supplies/Materials	WRWD	\$0	\$0		\$0
DNR IDP	WRWD	\$0	\$0		\$0
<b>Total</b>	<b>-</b>	<b>\$368,300</b>	<b>\$744,000</b>		<b>\$1,112,300</b>

## Personnel - WRWD

Position	FTE	Over # of years	LSOHC Request	Anticipated Leverage	Leverage Source	Total
0.2 FTE	0.20	5.00	\$100,600	\$0		\$100,600
<b>Total</b>	<b>0.20</b>	<b>5.00</b>	<b>\$100,600</b>	<b>\$0</b>		<b>\$100,600</b>

Budget Name	Partnership	LSOHC Request	Anticipated Leverage	Leverage Source	Total
Personnel	BWSR	\$145,500	\$0		\$145,500
Contracts	BWSR	\$71,400	\$0		\$71,400
Fee Acquisition w/ PILT	BWSR	\$0	\$0		\$0

Fee Acquisition w/o PILT	BWSR	\$0	\$0	\$0
Easement Acquisition	BWSR	\$4,254,300	\$0	\$4,254,300
Easement Stewardship	BWSR	\$221,000	\$0	\$221,000
Travel	BWSR	\$8,300	\$0	\$8,300
Professional Services	BWSR	\$0	\$0	\$0
Direct Support Services	BWSR	\$34,000	\$0	\$34,000
DNR Land Acquisition Costs	BWSR	\$0	\$0	\$0
Capital Equipment	BWSR	\$0	\$0	\$0
Other Equipment/Tools	BWSR	\$11,900	\$0	\$11,900
Supplies/Materials	BWSR	\$3,600	\$0	\$3,600
DNR IDP	BWSR	\$0	\$0	\$0
Total		\$4,750,000	\$0	\$4,750,000

**Personnel - BWSR**

Position	FTE	Over # of years	LSOHC Request	Anticipated Leverage	Leverage Source	Total
Program Management	0.05	5.00	\$30,000	\$0		\$30,000
Easement Processing	0.44	3.00	\$91,500	\$0		\$91,500
Engineering/Eco Services	0.08	3.00	\$24,000	\$0		\$24,000
Total	0.57	11.00	\$145,500	\$0		\$145,500

Amount of Request: \$5,118,300  
Amount of Leverage: \$744,000  
Leverage as a percent of the Request: 14.54%  
DSS + Personnel: \$280,100  
As a % of the total request: 5.47%  
Easement Stewardship: \$221,000  
As a % of the Easement Acquisition: 5.19%

**How did you determine which portions of the Direct Support Services of your shared support services is direct to this program:**

BWSR calculates and periodically reviews and updates direct support services costs that are directly related to and necessary for each request based on the type of work being done.

**What is included in the contracts line?**

The \$71,400 that is listed on the contracts line represents the allocation to the Norman Soil and Water Conservation District (SWCD) to provide assistance to the landowners for this project.

**Does the amount in the travel line include equipment/vehicle rental? - No**

**Explain the amount in the travel line outside of traditional travel costs of mileage, food, and lodging:**

The travel line will only be used for traditional travel costs.

**Describe and explain leverage source and confirmation of funds:**

The WRWD has agreed to contribute an amount equal to 20% of the offered RIM payments to match the LSOHC funding. This amounts to an approximately 15% match to the LSOHC funds.

**Does this proposal have the ability to be scalable? - Yes**

**Tell us how this project would be scaled and how administrative costs are affected, describe the “economy of scale” and how outputs would change with reduced funding, if applicable:**

A reduction in funding would reduce outputs proportionally for the most part. Program management costs would be the exception, due to program development and oversight remaining somewhat consistent regardless of appropriation amount.

**What is the cost per easement for stewardship and explain how that amount is calculated?**

Perpetual monitoring and enforcement costs have been calculated at \$6,500 per easement. This value is based on using local SWCD staff for monitoring and landowner relations and existing enforcement authorities. The amount listed for Easement Stewardship cover costs of the SWCD regular monitoring, BWSR oversight, and any enforcement necessary.



## Output Tables

**Table 1a. Acres by Resource Type**

Type	Wetlands	Prairies	Forest	Habitats	Total
Restore	0	0	0	0	0
Protect in Fee with State PILT Liability	0	0	0	0	0
Protect in Fee W/O State PILT Liability	0	0	0	0	0
Protect in Easement	0	1,200	0	0	1,200
Enhance	0	0	0	0	0
Total	0	1,200	0	0	1,200

**Table 1b. How many of these Prairie acres are Native Prairie?**

Type	Native Prairie
Restore	0
Protect in Fee with State PILT Liability	0
Protect in Fee W/O State PILT Liability	0
Protect in Easement	0
Enhance	0
Total	0

**Table 2. Total Requested Funding by Resource Type**

Type	Wetlands	Prairies	Forest	Habitats	Total
Restore	\$0	\$0	\$0	\$0	\$0
Protect in Fee with State PILT Liability	\$0	\$0	\$0	\$0	\$0
Protect in Fee W/O State PILT Liability	\$0	\$0	\$0	\$0	\$0
Protect in Easement	\$0	\$5,118,300	\$0	\$0	\$5,118,300
Enhance	\$0	\$0	\$0	\$0	\$0
Total	\$0	\$5,118,300	\$0	\$0	\$5,118,300

**Table 3. Acres within each Ecological Section**

Type	Metro/Urban	Forest/Prairie	SE Forest	Prairie	Northern Forest	Total
Restore	0	0	0	0	0	0
Protect in Fee with State PILT Liability	0	0	0	0	0	0
Protect in Fee W/O State PILT Liability	0	0	0	0	0	0
Protect in Easement	0	0	0	1,200	0	1,200
Enhance	0	0	0	0	0	0
Total	0	0	0	1,200	0	1,200

**Table 4. Total Requested Funding within each Ecological Section**

Type	Metro/Urban	Forest/Prairie	SE Forest	Prairie	Northern Forest	Total
Restore	\$0	\$0	\$0	\$0	\$0	\$0
Protect in Fee with State PILT Liability	\$0	\$0	\$0	\$0	\$0	\$0
Protect in Fee W/O State PILT Liability	\$0	\$0	\$0	\$0	\$0	\$0
Protect in Easement	\$0	\$0	\$0	\$5,118,300	\$0	\$5,118,300
Enhance	\$0	\$0	\$0	\$0	\$0	\$0
Total	\$0	\$0	\$0	\$5,118,300	\$0	\$5,118,300

**Table 5. Average Cost per Acre by Resource Type**

Type	Wetlands	Prairies	Forest	Habitats
Restore	\$0	\$0	\$0	\$0
Protect in Fee with State PILT Liability	\$0	\$0	\$0	\$0
Protect in Fee W/O State PILT Liability	\$0	\$0	\$0	\$0
Protect in Easement	\$0	\$4,265	\$0	\$0
Enhance	\$0	\$0	\$0	\$0

**Table 6. Average Cost per Acre by Ecological Section**

Type	Metro/Urban	Forest/Prairie	SE Forest	Prairie	Northern Forest
Restore	\$0	\$0	\$0	\$0	\$0
Protect in Fee with State PILT Liability	\$0	\$0	\$0	\$0	\$0
Protect in Fee W/O State PILT Liability	\$0	\$0	\$0	\$0	\$0
Protect in Easement	\$0	\$0	\$0	\$4,265	\$0
Enhance	\$0	\$0	\$0	\$0	\$0

*Automatic system calculation / not entered by managers*

**Target Lake/Stream/River Feet or Miles**

23

I have read and understand Section 15 of the Constitution of the State of Minnesota, Minnesota Statute 97A.056, and the Call for Funding Request. I certify I am authorized to submit this proposal and to the best of my knowledge the information provided is true and accurate.

# Parcel List

## Explain the process used to select, rank and prioritize the parcels:

The parcels listed include all parcels needed to complete the primary channel corridor of Reach C, D and E. Priority will be given to landowners voluntarily applying within the area of Reach C, D and E. Landowners within the other reaches would be considered as secondary priority on a first come basis if funding remains after all landowners in Reach C, D and E have been offered to enroll in the program.

## Section 1 - Restore / Enhance Parcel List

No parcels with an activity type restore or enhance.

## Section 2 - Protect Parcel List

Norman

Name	TRDS	Acres	Est Cost	Existing Protection?	Hunting?	Fishing?
ADA ELEVATOR CO	14347203	46	\$146,281	No	No	Limited
ADA ELEVATOR CO	14447234	73	\$216,749	No	No	Limited
ADA ELEVATOR CO	14447235	113	\$334,769	No	No	Limited
AG GREGATE INDUSTRIES - MWR INC	14446228	0	\$5	No	No	Limited
AG GREGATE INDUSTRIES - MWR INC	14446228	0	\$603	No	No	Limited
BAKER/BENJAMIN L	14446229	6	\$12,913	No	No	Limited
BAKER/R & C/FAMILY LLLP	14446213	13	\$35,321	No	No	Limited
BORGEN/CHARLES A /LIVING TRUST	14447226	7	\$19,375	No	No	Limited
BRANDT/ROBERT W	14446213	2	\$4,561	No	No	Limited
CARLSTROM/MARK B	14446222	3	\$5,806	No	No	Limited
CARLSTROM/MARK B	14446229	5	\$11,511	No	No	Limited
GILBERTSON/GEOERGE B &DOLORES	14446213	8	\$29,217	No	No	Limited
GILBERTSON/GEOERGE B &DOLORES	14446223	21	\$50,714	No	No	Limited
GILBERTSON/THOR A	14446214	25	\$67,189	No	No	Limited
GILBERTSON/THOR A	14446214	41	\$124,886	No	No	Limited
GILBERTSON/THOR A	14446222	2	\$6,318	No	No	Limited
GILBERTSON/THOR A	14446222	11	\$27,379	No	No	Limited
GILBERTSON/THOR & MARA	14446223	9	\$20,710	No	No	Limited
GILBERTSON/THOR & MARA	14446223	16	\$36,168	No	No	Limited
GILBERTSON/THOR & MARA	14446226	4	\$9,605	No	No	Limited
GRIVNO/GERRY	14446213	8	\$18,180	No	No	Limited
GRIVNO/VERNA L	14446213	0	\$133	No	No	Limited
HANSON/CLIFFORD/INC.	14347203	6	\$20,439	No	No	Limited
HANSON/CLIFFORD/INC.	14347203	49	\$174,586	No	No	Limited
HEITMAN/DEAN/REVO CABLE TRUST	14446213	27	\$75,044	No	No	Limited
HEITMAN/DENNIS J	14447236	0	\$648	No	No	Limited
HEITMAN/DWIGHT A & MARY L	14446230	0	\$680	No	No	Limited
HEITMAN/DWIGHT A & MARY L	14446230	24	\$58,039	No	No	Limited
HEITMAN/DWIGHT A & MARY L	14447225	3	\$11,027	No	No	Limited
HEITMAN/DWIGHT A & MARY L	14447225	5	\$11,378	No	No	Limited
HEITMAN/DWIGHT A & MARY L	14447225	7	\$19,212	No	No	Limited
HEITMAN/DWIGHT A & MARY L	14447225	12	\$36,031	No	No	Limited
HEITMAN/DWIGHT A & MARY L	14447225	32	\$100,008	No	No	Limited
HEITMAN/DWIGHT A & MARY L	14447225	56	\$160,002	No	No	Limited
HEITMAN/DWIGHT A & MARY L	14447236	62	\$201,589	No	No	Limited
HELLERUD/LARRY	14347209	0	\$300	No	No	Limited
JACOBSON/COREY A	14446214	0	\$6	No	No	Limited
JACOBSON/CURTIS & KATHERINE F	14446214	70	\$164,470	No	No	Limited
KAPPES/EUGENE & BETTY	14446229	2	\$5,970	No	No	Limited
KITCHELL/WAYNE	14446229	50	\$124,448	No	No	Limited
LARSON/DON A & RUTH O	14446229	1	\$1,398	No	No	Limited
LARSON/DUWAYNE O.	14446227	42	\$116,224	No	No	Limited
LARSON/GRAYDON	14446228	0	\$563	No	No	Limited
LARSON/PAUL R	14446221	0	\$6	No	No	Limited
LARSON/PAUL R	14446222	24	\$75,595	No	No	Limited
LARSON/PAUL R	14446227	67	\$189,873	No	No	Limited
LARSON/PAUL R	14446228	17	\$40,812	No	No	Limited
LARSON/SAM A & PAMELA J	14446228	1	\$3,046	No	No	Limited
LARSON TRUSTEE/GRAYDON	14446228	137	\$377,510	No	No	Limited
LEE/MARGARET A/TRUST	14347204	95	\$325,593	No	No	Limited
LEE/MARGARET A/TRUST	14347210	0	\$296	No	No	Limited
LEE/WARREN & SHARON	14347203	0	\$287	No	No	Limited
LEE/WARREN & SHARON	14447225	33	\$106,646	No	No	Limited
LEE/WARREN & SHARON	14447236	7	\$16,645	No	No	Limited

LEE/WAYNE & LYNN	14347203	62	\$187,797	No	No	Limited
LEE/WAYNE & LYNN	14347203	64	\$180,487	No	No	Limited
LEE/WILLIAM R/TRUST	14347203	32	\$93,569	No	No	Limited
LEE/WILLIAM R/TRUST	14347209	0	\$248	No	No	Limited
LOFGREN/C J/CO	14446229	40	\$111,335	No	No	Limited
LOFGREN/C J/CO	14446230	43	\$117,336	No	No	Limited
MCNAMAR / JAY	14446214	40	\$93,798	No	No	Limited
MELNIK/HENRY A/ET AL	14446229	8	\$18,766	No	No	Limited
MERKENS/RICHARD A	14446223	8	\$22,541	No	No	Limited
MERKENS/RICHARD A	14446223	22	\$63,820	No	No	Limited
NELSON/BARBARA & DAVID/TRS	14446230	0	\$1,210	No	No	Limited
NELSON/BARBARA & DAVID/TRS	14446230	38	\$94,387	No	No	Limited
NELSON/BARBARA & DAVID/TRS	14446231	0	\$915	No	No	Limited
NELSON/BARBARA & DAVID/TRS	14446231	46	\$132,505	No	No	Limited
NELSON/BARBARA & DAVID/TRS	14447225	30	\$91,102	No	No	Limited
NELSON/BARBARA & DAVID/TRS	14447236	24	\$82,456	No	No	Limited
OLSON/MICHAEL J.	14446229	6	\$13,847	No	No	Limited
OLSON/MICHAEL J.	14446229	10	\$23,102	No	No	Limited
OLSON/MICHAEL J.	14446229	10	\$23,255	No	No	Limited
PAVIA/JANE	14446222	6	\$14,770	No	No	Limited
PAVIA/JANE	14446223	24	\$57,553	No	No	Limited
PAXTON/ARLO D	14447235	52	\$174,873	No	No	Limited
PEPPEL/CAROL L	14446229	10	\$23,362	No	No	Limited
PLATT/ROBERT E	14447225	3	\$7,177	No	No	Limited
PLATT/ROBERT E	14447225	10	\$28,305	No	No	Limited
PLATT/ROBERT E	14447225	41	\$96,148	No	No	Limited
RAMSTAD BROTHERS	14446227	32	\$89,678	No	No	Limited
RAMSTAD/GORDON R & ELLEN J	14446227	2	\$4,779	No	No	Limited
ROCKSTAD/ERIK JON & GRETCHEN	14446214	3	\$6,966	No	No	Limited
ROESCH/MICHAEL	14446229	1	\$2,255	No	No	Limited
ROESCH/MICHAEL	14446229	19	\$44,192	No	No	Limited
ROESCH/MICHAEL	14446229	63	\$158,278	No	No	Limited
ROESCH/MICHAEL J & JULIE A	14446229	10	\$23,880	No	No	Limited
ROESCH/MICHAEL & JULIE A	14446222	69	\$177,197	No	No	Limited
ROQUET/WAYNE & CHERYL D	14446229	2	\$5,574	No	No	Limited
ROQUET/WAYNE & CHERYL D	14446229	5	\$10,589	No	No	Limited
RUEBKE/DEBRA A	14446213	20	\$46,164	No	No	Limited
RUEBKE/DEBRA A	14446213	27	\$76,023	No	No	Limited
RUEBKE/DEBRA A	14446213	80	\$243,278	No	No	Limited
SANDE/SUSAN L/TRUSTEE	14446230	93	\$240,299	No	No	Limited
SANDE/SUSAN L/TRUSTEE	14446231	11	\$37,521	No	No	Limited
SANFORD/EDWARD & MARY	14446223	17	\$39,910	No	No	Limited
STRAND/KIRK T & VICKI J	14446213	39	\$91,163	No	No	Limited
THIEL/WALTER A/JR ET AL	14347203	11	\$32,323	No	No	Limited
TOMMERDAHL/MARLENE/QTIP TRUST	14447235	31	\$90,033	No	No	Limited
TOMMERDAHL/MARLENE/QTIP TRUST	14447235	31	\$92,007	No	No	Limited
TUFTE/BRUCE, BLAIR & BRENT	14347202	34	\$95,273	No	No	Limited
TUFTE/BRUCE, BLAIR & BRENT	14347203	56	\$156,054	No	No	Limited
VIK/EUGENE G	14447235	130	\$382,461	No	No	Limited
VIK/EUGENE G	14447236	82	\$245,230	No	No	Limited
VISSER/CLAY D	14446222	16	\$44,638	No	No	Limited
VISSER/CLAY D	14446227	28	\$69,398	No	No	Limited
VISSER/JARED D & ROXANNE M	14446228	0	\$112	No	No	Limited
VISSER/JARED D & ROXANNE M	14446228	62	\$163,417	No	No	Limited

VISSER/KENNETH D	14446227	50	\$116,272	No	No	Limited
VISSER/KENNETH D	14446228	6	\$14,460	No	No	Limited
VISSER/KENNETH D	14446228	17	\$38,986	No	No	Limited
WAGNER/CATHERINE	14446229	10	\$22,974	No	No	Limited
WAGNER/CATHERINE	14446229	15	\$34,790	No	No	Limited
WAGNER/CATHERINE	14446229	20	\$47,189	No	No	Limited
WAGNER/CATHERINE	14446230	59	\$142,527	No	No	Limited
WAGNER/ROBERT J	14446214	5	\$11,717	No	No	Limited
WAGNER/ROBERT J	14446229	25	\$57,893	No	No	Limited
WILDRICE WATERSHED DISTRICT	14347203	13	\$33,379	No	No	Limited
WILDRICE WATERSHED DISTRICT	14446227	7	\$15,442	No	No	Limited

### Section 2a - Protect Parcel with Bldgs

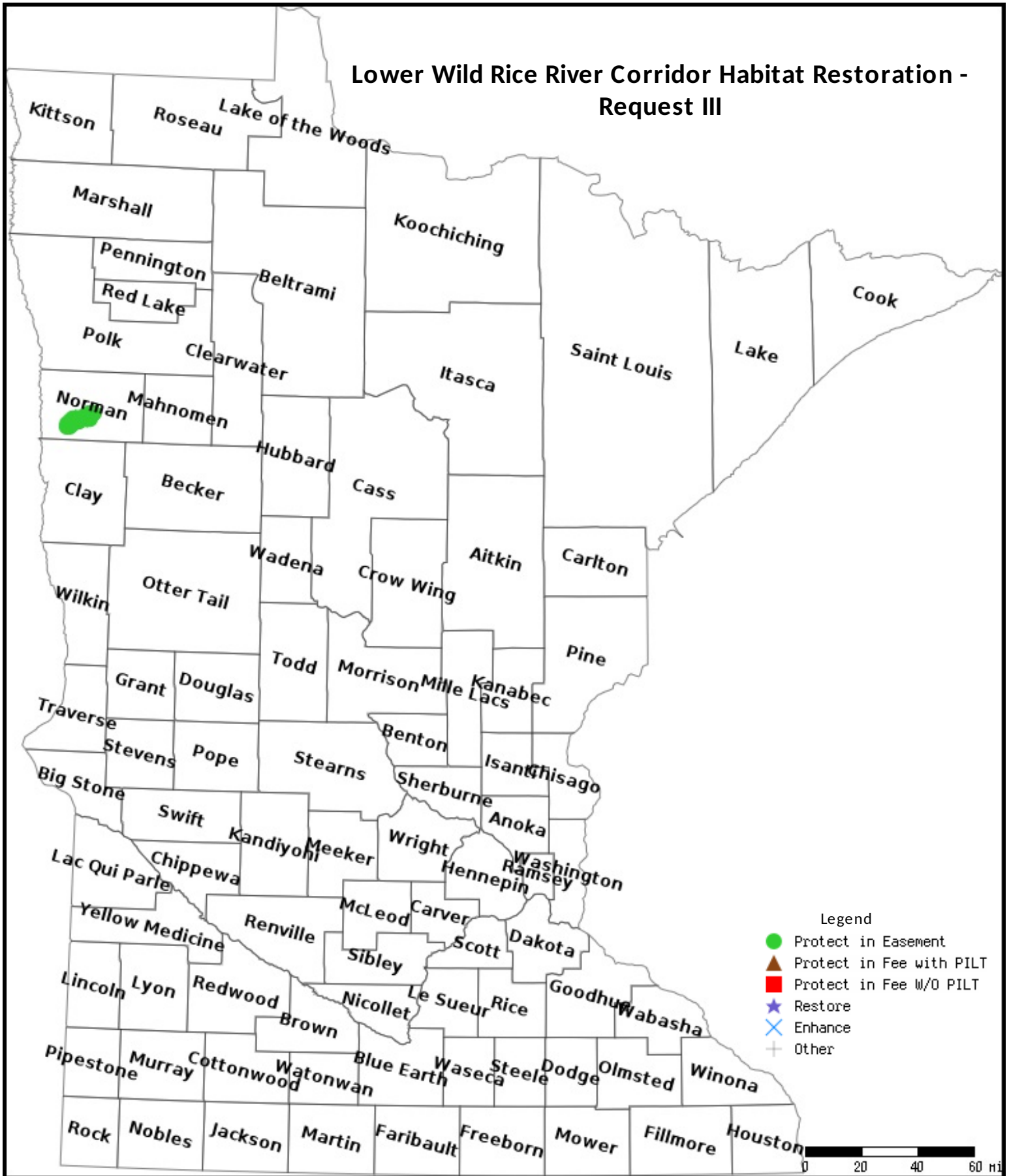
No parcels with an activity type protect and has buildings.

### Section 3 - Other Parcel Activity

No parcels with an other activity type.

# Parcel Map

## Lower Wild Rice River Corridor Habitat Restoration - Request III



Data Generated From Parcel List

# Lower Wild Rice Corridor Habitat Restoration Program

## What is the Program

The Lower Wild Rice Corridor Habitat Restoration Program (LWRRCHRP) is a voluntary effort with the long-term goal to restore a natural corridor area along the Lower Reach of the Wild Rice River. This project will improve fish and wildlife habitat, enhance water quality, and reduce the risks of flood damages to agricultural land. This is a cooperative project between the Wild Rice Watershed District, BWSR, MnDNR, and other local LGUs as illustrated in the Implementation Process diagram on the following page.

The program provides an opportunity for landowners to receive financial incentives through enrolling land along the corridor in the program. Landowners enrolling land in the program will be required to follow the conservation requirements of the *Reinvest in Minnesota (RIM) Reserve - Outside Request Program* and a *Supplemental WRWD Easement* to allow for Phase 2-4 modifications described below.

## Phased Implementation

Due to the overall size of the initiative, it is planned that the project will be conducted in multiple phases over the next decades. The phases were established to allow both for orderly implementation of the project and to ensure that wildlife and habitat benefits would be gained from the onset of implementation. The following describes the anticipated phases and major work items anticipated under each phase.



- **Phase 1 – Land Acquisition/Restoration** – This phase will involve acquisition of a Conservation Easements. Two companion easements would be executed, RIM and a Supplemental WRWD Easement.



As part of this phase, the production of agricultural crops within the parcel would cease and the area would be restored to a permanent vegetative cover by the landowner as set forth in the Conservation Easement conservation plan under the requirements of the RIM program. Since the lands would still be in private ownership, management/maintenance activities identified within the easement area will be the responsibility of the landowner. In addition, the

landowner will grant the Watershed District rights to install and maintain future phases of implementation. Future easement monitoring and stewardship will be provided by and through the Board of Water and Soil Resources and Norman County SWCD as part of the RIM Easement.

- **Phase 2 – Detailed Design and Setback Levee Construction** – Once a significant reach of property has been enrolled as part of Phase 1 and detailed design for the corridor restoration has been completed, the existing river-side levees would be decommissioned and replaced with new levees setback further from the river. The alignment of these levees would be established to allow for future implementation of Channel Rehabilitation under Phase 3.



Work under this phase would be completed by the Wild Rice Watershed District. Future maintenance of the setback levees and directly adjacent features would also be completed by the Wild Rice Watershed District. All other areas would continue to be maintained by the underlying property owner under the terms of the Conservation Easement conservation plan established in Phase 1.

- **Phase 3 – Channel Rehabilitation** – Phase 3 will involve restoration of the channel along an approximately 23-mile segment of river. This restoration will reconnect many segments of the natural river that were cut off by the channelized, leveed river channel. Reconnecting the floodplain will also benefit adjacent prairie and wetlands. The timing of this channel restoration will depend on available funding and completion of Phase 2. Modifications under this phase as well as future maintenance of the channel areas would be completed by the Wild Rice Watershed District. Other areas would continue to be maintained by the underlying property owner under the terms of the Conservation Easement conservation plan established in Phase 1, except for the setback levee corridors defined in Phase 2.

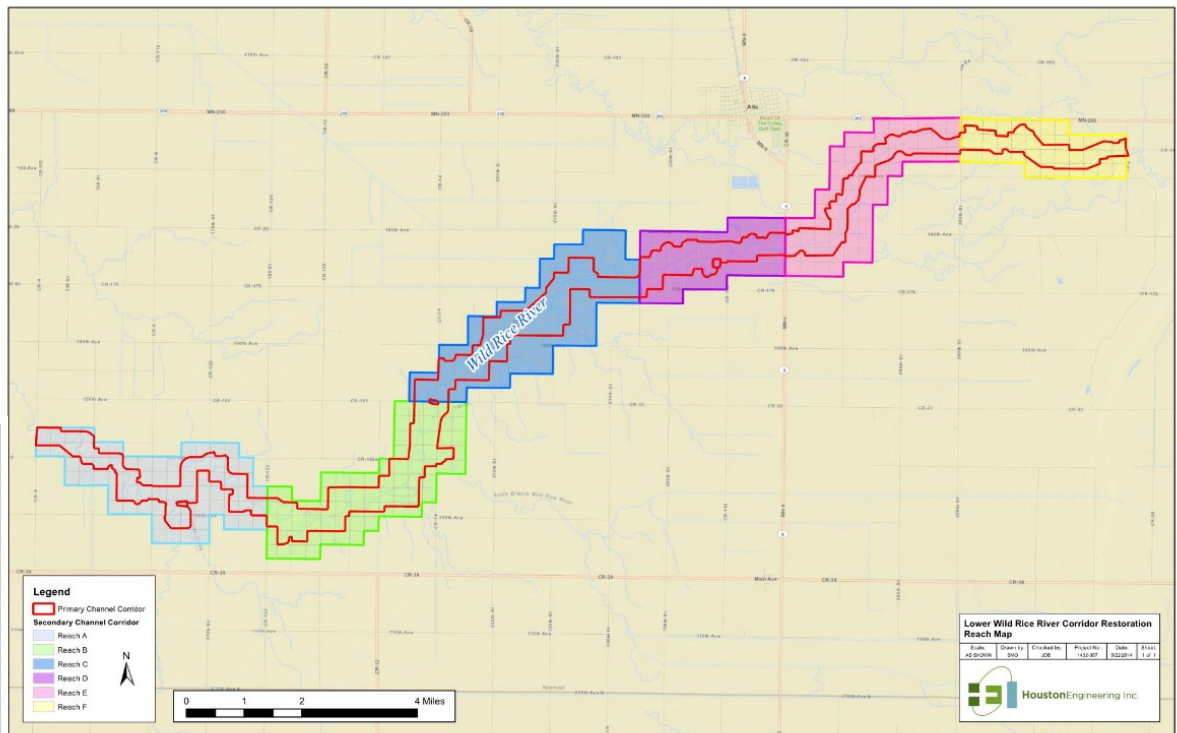
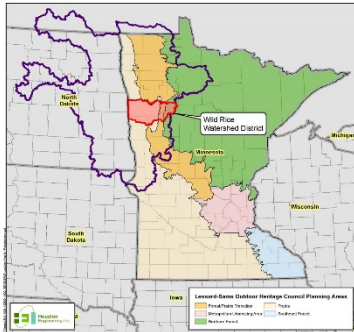


**Phase 4 – Operation and Maintenance** – Once Phases 1-3 are completed, the operation and maintenance of the setback levee and channel corridors (including adjacent drainage features) would be completed by the Wild Rice Watershed District. Other areas would continue to be maintained by the underlying property owner under the terms of the Conservation Easement.

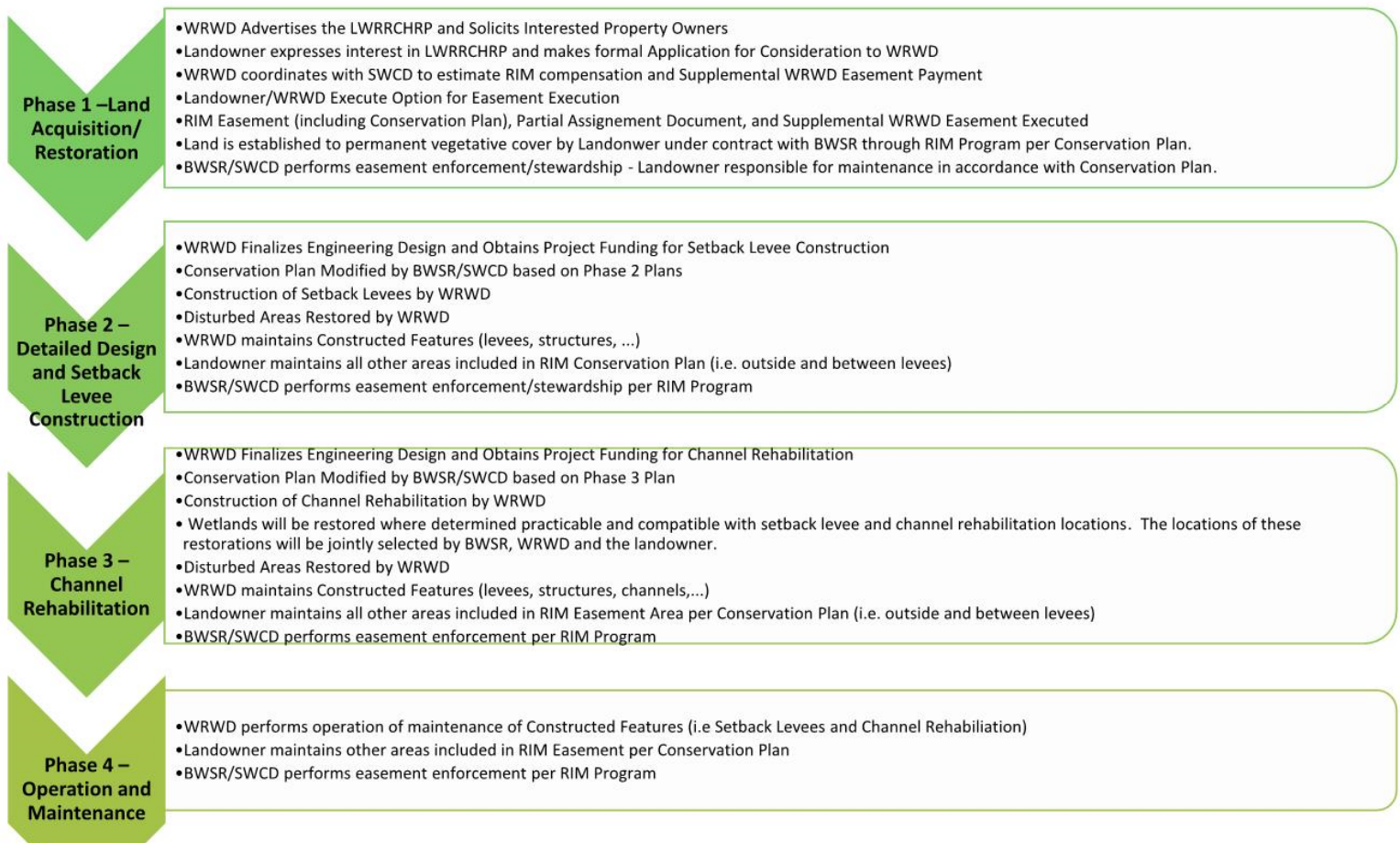


# Eligible Project Area

Priority is currently being placed on the area within Reach C, D and E in the map on this page. However, applications would be accepted/funded from landowners within any reach if funding is available.



## Lower Wild Rice River Corridor Habitat Restoration Project (LWRRCHRP) Implementation Process



*With approval of this requested amount, and previously approved LSOHC funding, it is expected that 2380 acres will be acquired through the implementation of approximately 65 easements.*



2011 Freshwater Fishing Hall of Fame Inductee

May 14, 2019

Board of Managers  
Wild Rice Watershed District  
11 5<sup>th</sup> Avenue East  
Ada, MN 56510

Dear Board of Managers;

Please accept this letter of support for the Lessard-Sams Outdoor Heritage Council "Lower Wild Rice River Stream Restoration Project" as proposed by Kevin Ruud, Administrator – Wild Rice Watershed District

As an organization with the mission "to promote sportsmanship, conservation & education with respect to walleye fishing", FM Walleyes Unlimited, Inc. sees the benefit of habitat restoration in supporting healthy populations of all fish species. We therefore, wish to offer our support for this proposal and the work outlined within to restore sections of the Wild Rice River in Western Minnesota to natural habitat, benefiting the entire Red River Basin.

Sincerely,

Kyle Agre, President  
Representing, FM Walleyes Unlimited, Inc.  
P.O. Box 1077  
Moorhead, MN 56560

*"To Promote Sportsmanship, Conservation & Education  
With Respect To Walleye Fishing"*



## Red River Watershed Management Board

June 04, 2014

Board of Managers  
Wild Rice Watershed District  
11 5th Ave. E  
Ada, MN 56510

RE: Support for Lessard-Sams Outdoor Heritage Council "Lower Wild Rice River Project Stream Restoration Project"

Dear Board of Managers:

Please accept this letter acknowledging the Red River Watershed Management Board's (RRWMB's) support for the Lessard-Sams Outdoor Heritage Council "Lower Wild Rice River Project Stream Restoration Project" as proposed by Kevin Ruud, Administrator - Wild Rice Watershed District.

We anticipate that this project will help our board in its mission to institute, coordinate and finance projects and programs to alleviate flooding and assure the beneficial use of water in the watershed of the Red River and its tributaries. As a member of the Red River Basin Flood Damage Reduction Work Group, the RRWMB has significant interest in supporting projects that seek to achieve the flood damage reduction and natural resource enhancement goals included in the 1998 Mediation Agreement. The stream restoration component of this project is consistent with the objective of the Work Group to incorporate natural resource enhancements within flood damage reduction projects.

The RRWMB offers our support for this proposal in order to advance our efforts to utilize comprehensive approaches for flood damage reduction and natural resource enhancements in the Red River Basin.

Sincerely,

A handwritten signature in black ink that reads "Naomi Erickson".

Naomi L. Erickson  
Administrator



# RED RIVER RETENTION AUTHORITY

1120 28<sup>th</sup> Ave N - Suite B - West, Fargo, ND 58102 - Phone: 701-356-6644

June 4, 2014

Board of Managers  
Wild Rice Watershed District  
11 5<sup>th</sup> Ave. E  
Ada, MN 56510

RE: Lower Wild Rice River Project – Stream Restoration – Support

Dear Watershed Board,

The Red River Retention Authority and its members, we would like to offer our support for this stream restoration project to enhance wildlife habitat and improve water quality. This project as planned will be win for all; – people – plants – animals and all other creatures.

It is wonderful when we can marry significant environmental improvements with returning a stream to its more natural state and its natural floodplain. Funding for such projects is difficult to obtain. It is even more difficult from the local financing level to add these type of habitat and wildlife improvements as well. The Outdoor Heritage Council funding will be essential to restore the meandering stream features and habitat corridor in the plan.

We certainly hope the Outdoor Heritage Council Board can see the merits and fund your project request. We fully support your application for Lessard-Sams Outdoor Heritage Council funding. We believe the citizens of Minnesota, when they voted for this funding mechanism would concur this project would be a worthy investment of these funds and the project is of the type they envisioned for the use of these funds.

If we can offer additional assistance or support, please let us know.

Sincerely,

A handwritten signature in black ink, appearing to read "Pat Downs", is written over a faint, larger version of the signature.

Pat Downs, Executive Director  
Red River Retention Authority