

# Lessard-Sams Outdoor Heritage Council

## Fiscal Year 2021 / ML 2020 Request for Funding



**Date:** May 31, 2019

**Program or Project Title:** Mississippi Headwaters Habitat Corridor Project-Phase 4

**Funds Requested:** \$9,105,300

**Manager's Name:** Tim Terrill

**Organization:** Mississippi Headwaters Board

**Address:** 322 Laurel St., Suite 11

**City:** Brainerd, MN 56401

**Office Number:** 218-824-1189

**Email:** timt@mississippiheadwaters.org

**County Locations:** Aitkin, Beltrami, Cass, Crow Wing, and Hubbard.

### Eco regions in which work will take place:

- Northern Forest
- Forest / Prairie Transition

### Activity types:

- Protect in Easement
- Protect in Fee

### Priority resources addressed by activity:

- Forest
- Prairie
- Habitat

## Abstract:

The Mississippi Headwaters Board in partnership with The Trust for Public Land and the Minnesota Board of Water and Soil Resources, assisted by 8 County Soil and Water Conservation Districts, will continue to permanently protect critical shorelands and wildlife habitats along the first 400 miles of the Mississippi River. Fee title acquisitions and conservation easements on priority lands will create and expand contiguous habitat corridors/complexes and reduce forest fragmentation from development to benefit fish, game and non-game wildlife, and migratory waterfowl. In addition, recreational opportunities for public fishing, hunting, and passive recreation will be increased.

## Design and scope of work:

This proposal is designed to meet current and anticipated land protection opportunities along the first 400 miles of the Mississippi River, its major tributaries, and headwaters' lakes/reservoirs (Lake Bemidji, Winnibigoshish, Wolf, Cass, others). It will protect and benefit fish, game and non-game wildlife, and migratory waterfowl. The Headwaters encompass 8 counties: Clearwater, Beltrami, Itasca, Aitkin, Crow Wing, Hubbard, Cass and Morrison.

There is urgency to fund Phase 4 since Phase 1 (ML 16) is already spent and most of Phases 2 (ML 17) & 3 (ML 18) are spent or committed to specific fee-title acquisition or conservation easement projects. There is a waiting list of 25 committed landowners and others have interest. To date, this program has permanently protected 1,966 acres and 14 miles of Mississippi Headwaters shoreline, and projects equal to protection of 1,800 acres and 14+ miles of shoreline are in process. There have been additions to two state forests and a county forest, creation of a new WMA, and 11 conservation easements placed strategically near other public lands to create and expand habitat protection corridors/complexes. Other benefits include reduction of forest fragmentation from development; food and safe resting places for migratory waterfowl; protection of water quality for fish habitat; enhanced public fishing, hunting, and other recreational opportunities, and safe drinking water for millions of Minnesotans downstream.

The Mississippi River is the largest river in North America and one of Minnesota's greatest assets. Its headwaters provide excellent habitat for a variety of fish and over 350 species of animals and birds as well as quality recreational opportunities. It supports migratory

waterfowl along the Mississippi flyway and impacts living creatures far beyond Minnesota's boundaries. Because most of the quality privately owned lakeshore is already developed in the headwaters, there is increasing development pressure along the Mississippi River corridor as people seek to live and recreate near water. Public lands adjacent to private property are in danger of losing habitat connectivity as these undeveloped lands are increasingly sold for development resulting in destruction of wild rice beds, disruption of habitat and fragmentation of the forestlands, grasslands, and wetlands that dominate the headwaters.

The Mississippi Headwaters Board administers and coordinates this project; The Trust for Public Land conducts fee-title acquisition and the MN Board of Water and Soil Resources is responsible for conservation easements. The headwaters' Soil and Water Conservation Districts provide on-the-ground resources to solicit, select, process and monitor easements. With written resolutions, support is provided by the member county boards. Additional stakeholder support is provided by the Minnesota DNR and The Nature Conservancy.

As land conservation projects are proposed, a Technical Committee comprised of project stakeholders review and approve each project against established criteria. Strong local government support is unique to this project. County boards are notified early and approval to proceed obtained. When an acquisition project is near completion, the County Board is asked for formal approval to complete the project. Building trust with Counties has greatly contributed to the program's success.

### **Which sections of the Minnesota Statewide Conservation and Preservation Plan are applicable to this project:**

- H1 Protect priority land habitats
- H3 Improve connectivity and access to recreation

### **Which other plans are addressed in this proposal:**

- Mississippi River Headwaters Comprehensive Plan
- Outdoor Heritage Fund: A 25 Year Framework

### **Describe how your program will advance the indicators identified in the plans selected:**

The Mississippi Headwaters Comprehensive Plan has two goals to be advanced: 1) Identification of, management and possible acquisition of critical shorelands of the river and headwaters lakes in public or private ownership; and 2) the recreational use of the river and adjacent public lands. A key indicator in the plan is: "the river's natural values are protected or enhanced by providing information and data to promote the protection of habitat areas, use of forestry goals, and the preservation of existing natural values."

Primary indicators within the Outdoor Heritage Fund Plan to be addressed are "enhancing the overall protection of the long-term health of the land and its ecosystems and biological diversity." Specific indicators met include: increasing the amount of acres of permanently protected terrestrial habitat, both public and private, through fee-title acquisition and conservation easements; preventing further losses of managed forests; and the protection of physical aquatic habitats.

### **Which LSOHC section priorities are addressed in this proposal:**

#### **Forest / Prairie Transition:**

- Protect, enhance, and restore wild rice wetlands, shallow lakes, wetland/grassland complexes, aspen parklands, and shoreland that provide critical habitat for game and nongame wildlife

#### **Northern Forest:**

- Protect shoreland and restore or enhance critical habitat on wild rice lakes, shallow lakes, cold water lakes, streams and rivers, and spawning areas

### **Describe how your program will produce and demonstrate a significant and permanent conservation legacy and/or outcomes for fish, game, and wildlife as indicated in the LSOHC priorities:**

The Mississippi Headwaters Habitat Corridor Project (Phases 1, 2, & 3) has already produced a significant conservation legacy of permanently protected fish, game, and wildlife habitat and prevented the loss of forest integrity through the completed protection of approximately 2,000 acres and 14 miles of shoreline. By June of 2021, another 1,800+ acres and 14+ miles of shoreline will be permanently protected when projects currently in process are completed. When funded, this Phase 4 proposal will add another 3,000 acres of protected habitat to Minnesota's conservation legacy.

This project helps build resilience into the Mississippi River headwaters system to protect against fragmentation of forests and shorelines and ensure quality habitat (aquatic and terrestrial) and population sustainability for fish, game and non-game wildlife, and

migratory waterfowl along with enhanced recreational opportunities for all Minnesotans.

## **Describe how the proposal uses science-based targeting that leverages or expands corridors and complexes, reduces fragmentation or protects areas identified in the MN County Biological Survey:**

The minor watershed of the Mississippi Headwaters (from Itasca State Park to the southern border of Morrison County) includes 6,842 privately owned parcels greater than 20 acres, which is the minimum project parcel size. Large complexes and corridors of public land and/or privately protected land adjacent to public land provide the essential elements of good habitat as defined by the National Wildlife Federation: food, water, a place to raise young, and different types of cover as wildlife move around in various life stages. This project seeks to find parcels that provide the highest opportunity for fish and wildlife habitat protection and maintenance of forest integrity with an emphasis on creating large, contiguous habitat complexes. To build these complexes, fee-title acquisition is used to increase public land (either state or county ownership) and conservation easements are used to prevent future development on private land adjacent to or near public land. A science-based ranking system of private lands was used to sort out the highest priority prospects for program outreach. Priority was given to private lands that are adjacent to the river and/or other public land.

The parcel ranking and sorting was accomplished with GIS utilizing The Nature Conservancy's multi-benefits, science-based analysis of the Upper Mississippi River Basin; a variety of state natural resource databases including the Minnesota County Biological Survey, Minnesota Wildlife Action Network, and databases of priority shallow, wild rice, and trout lakes; and current county parcel data regarding adjacency to public land. The identified private parcels were ranked according to their riparian nature, adjacency to public land, and habitat quality. Parcels with high habitat value and adjacent to public land ranked the highest. The GIS analysis culled the prospect parcels down to 1,191 priority parcels collectively owned by 315 landowners in the 8 headwaters counties. The SWCDs are conducting outreach to these priority parcels to ensure the highest quality habitat is protected and habitat complexes will exist for the future sustainability of critical fish and wildlife populations.

## **How does the proposal address habitats that have significant value for wildlife species of greatest conservation need, and/or threatened or endangered species, and list targeted species:**

The science-based targeting described above utilized the Minnesota Wildlife Action Network's GIS data to identify priority areas within the minor watershed of the first 400 miles of the Mississippi River that have significant value for wildlife species of greatest conservation need and/or are threatened and endangered; specific areas of species richness and/or biodiversity importance; or areas where aquatic and terrestrial habitats have been compromised. These identified areas are a primary focus in selecting parcels for land protection. The Wildlife Action Network was developed to help implement the 2015-2025 MN Wildlife Action Plan. Species of greatest conservation need are defined as native animals, fish, non-game and game species whose population is rare, declining, or vulnerable to decline along with species for which Minnesota has stewardship responsibility. The decline or endangerment of these species are sentinels of habitat decline, loss, and fragmentation that will ultimately affect the sustainability of populations of more common species of fish, game, and non-game wildlife in the Mississippi headwaters and food for migratory waterfowl.

In the State Wildlife Action Plan: 2015-2023 some of the most critical and/or important species (common name used) related to the purpose of this project and its geographic focus include, but are not limited to: Blandings Turtle, Gray wolf, Red Shouldered Hawk, Golden-winged warbler, Common Loon, Northern Long Eared Bat, white-tailed jackrabbit, Canada lynx, American badger, multiple-species of shrew and mouse, northern goshawk, boreal owl, northern pintail, evening grosbeak, trumpeter swan, spruce grouse, American kestrel, red-headed woodpecker, spotted salamander, pickerel frog, sand darter fish, longnose sucker, shortjaw cisco, and more.

## **Identify indicator species and associated quantities this habitat will typically support:**

Much of this forested corridor provides habitat for white-tailed deer, Golden-winged Warblers, and Ovenbirds populations. Whitetailed deer (*Odocoileus virginianus*) use a wide variety of forested habitats, are found throughout Minnesota, and are an important game species in the state. In the 33 forested deer permit areas for which deer densities are estimated, covering most of the LSOHC Northern Forest section, the six-year average (2010-2015) for pre-fawn deer densities across all deer permit areas is 13 deer per square mile of land (excluding water) . This translates to 0.02 deer(pre-fawning) per acre of forest land habitat or roughly 1 deer (pre-fawning) for every 50 acres of land. Golden-winged Warblers are often associated with shrub land habitat and regenerating forests. More current research indicates a variety of forest habitats are required by Golden-winged Warblers (a matrix of shrubby wetlands and uplands, regenerating forests, and mature forests). While territories vary in size, an average of 4 pairs for every 10 hectares , may be translated to roughly 6 pairs for every 40 acres. Ovenbirds (*Seiurus aurocapilla*) are found in upland forests statewide; typically found in a relatively mature forest but can also be found in younger forests. While territories vary in size and may overlap, an average of 10 pairs for every 10 hectares may be translated to roughly 16 pairs for every 40 acres.

## **Outcomes:**

### **Programs in the northern forest region:**

- Forestlands are protected from development and fragmentation *The amount of forested acres protected either by fee-title acquisition or*

conservation easement is measurable at project completion.

**Programs in forest-prairie transition region:**

- Rivers and streams provide corridors of habitat including intact areas of forest cover in the east and large wetland/upland complexes in the west *Upon project completion, the number of acres of protected land, either intact forest cover or wetland/upland complexes can be measured along with the feet of river and stream shoreline protected.*

**How will you sustain and/or maintain this work after the Outdoor Heritage Funds are expended:**

For conservation easements recorded through this project, the Minnesota Board of Water and Soil Resources is responsible for maintenance, inspection and monitoring into perpetuity. They partner with the Soil and Water Conservation District in the county where the easement is recorded to carry-out the oversight and monitoring of the conservation easements. Easements are inspected annually for the first five years beginning in the year after the easement is recorded. Thereafter, on-site inspections and compliance checks are performed and reported to BWSR every three years. If a violation is noted, a non-compliance procedure is initiated. Stewardship money is appropriated to cover ongoing BWSR oversight, SWCD monitoring, and enforcement actions, if needed.

Trust for Public Land is responsible for the fee-title acquisitions in this project. They acquire the land with Outdoor Heritage Funds and then transfer ownership to the applicable public entity—either the MN DNR or a Headwaters County—for permanent ownership and stewardship. The lands are then managed consistent with the public entity’s land management policies.

**Explain the things you will do in the future to maintain project outcomes:**

Year	Source of Funds	Step 1	Step 2	Step 3
2020-2023	OHF	Work with project partners and landowners to determine interest and develop long term fish and game habitat protection priorities	Work with BWSR and County SWCDs to acquire conservation easements	BWSR and SWCDs perform ongoing on-site inspections and monitoring and enforce conditions of the recorded easement into perpetuity
2020-2023	OHF	Work with project partners and landowners to determine interest and develop long term habitat protection priorities	Work with The Trust for Public Land to acquire parcels for fee-title acquisition and transfer to a public entity.	Public entity owners of acquired lands (MN DNR or a County) will follow their monitoring guidelines and the land management policies of their organization.
2020-2023	OHF	Work with project partners and landowners to determine interest and develop long term fish and game habitat protection priorities	MHB provides project coordination among project partners, including responsibility for status reports, providing outreach assistance to SWCDs, convening and facilitating semi-annual meetings of the Project Technical Committee, and promotion of ongoing relationships with 8 County Boards.	Ongoing coordination with the 8 county boards represented on MHBs joint powers board that oversees protection of natural resources in the Mississippi Headwaters

**What is the degree of timing/opportunistic urgency and why it is necessary to spend public money for this work as soon as possible:**

There are landowners waiting to enroll in this program when additional funding is available, but their priorities can change over time. Investing public dollars now will insure a strong Minnesota Outdoor Legacy for future generations. The Mississippi Headwaters Habitat Corridor Project is an important opportunity to protect some of Minnesota’s most treasured fish and wildlife species and insure continued, high quality recreational opportunities for fishing, hunting, trapping and passive recreation, such as bird watching, canoeing and hiking. As lakes have become fully developed, development pressure has increased along the Mississippi River, its tributaries, and land in close proximity to the river as people seek to live and recreate on or near water. This results in fragmentation of forests, brushlands within forests, and shoreland vegetation along with a decline in wetlands, grasslands, and managed forests. Ultimately the sustainability of associated fish and wildlife populations is impacted.

**Does this program include leverage in funds:**

Yes

TPL is providing a private match of half of their DSS costs and all travel costs. RIM acquisition credits will be used if applicable to a specific project.

## Relationship to other funds:

- Clean Water Fund

### Describe the relationship of the funds:

The Mississippi Headwaters Board, a 8-county joint powers board formed in 1980 to preserve the wild and scenic values of the Mississippi River, has been successful in obtaining Clean Water Legacy Funds to address water quality issues in the 8-county headwaters region. While these funds have not been used directly for the Headwaters Habitat Corridor Project, the benefits of water quality programs compliment this project because where there are water quality benefits there are also concurrent benefits for fish and wildlife habitat.

## Per MS 97A.056, Subd. 24, Any state agency or organization requesting a direct appropriation from the OHF must inform the LSOHC at the time of the request for funding is made, whether the request is supplanting or is a substitution for any previous funding that was not from a legacy fund and was used for the same purpose:

This request is not supplanting or a substitution for any previous Legacy funding used for the same purpose.

## Describe the source and amount of non-OHF money spent for this work in the past:

Not Listed

## Activity Details

### Requirements:

If funded, this proposal will meet all applicable criteria set forth in MS 97A.056 - **Yes**

Will county board or other local government approval be formally sought prior to acquisition, per 97A.056 subd 13(j) - **Yes**

Is the land you plan to acquire (fee title) free of any other permanent protection - **Yes**

Is the land you plan to acquire (easement) free of any other permanent protection - **Yes**

Do you anticipate federal funds as a match for this program - **No**

### Land Use:

Will there be planting of corn or any crop on OHF land purchased or restored in this program - **No**

Is this land currently open for hunting and fishing - **No**

Will the land be open for hunting and fishing after completion - **Yes**

Land acquired by The Trust for Public Land and conveyed to the MN DNR or counties will fall under management plans that allow for public hunting and fishing opportunities.

Will the eased land be open for public use - **No**

Are there currently trails or roads on any of the acquisitions on the parcel list - **No**

Will new trails or roads be developed or improved as a result of the OHF acquisition - **Yes**

Describe the types of trails or roads and the allowable uses:

For conservation easements, there could be a potential for new trails to be developed (though uncommon) if they contribute to easement maintenance or benefit the easement site (i.e. firebreaks, berm maintenance, etc.). TPL is not aware of any trails or roads on any of the acquisitions on the parcel list nor are any new trails planned.

How will maintenance and monitoring be accomplished:

Land that is in easement will be maintained by the landowner and will be enrolled in a scheduled monitoring program by the County Soil & Water Conservation District. Land that is acquired by fee title will follow the land maintenance and monitoring plans of the public entity that has final ownership--either the MN DNR or a Headwaters' County.

## Accomplishment Timeline

Activity	Approximate Date Completed
TPL negotiate with landowners, notify and get approval of county board, conduct due diligence on properties to be acquired, acquire and convey to the MN DNR or specific county	2023
SWCDs do easement outreach to prospect landowners, complete easement applications, assist in processing easements, record the easement.	2023
BWSR process and acquire RIM easements approved by the Project Technical Committee;	2023
MHB - Project coordination, administration, and reporting `	2023
SWCDs do on-going monitoring of conservation easements	On-going

# Budget Spreadsheet

**Total Amount of Request: \$9,105,300**

## Budget and Cash Leverage

BudgetName	LSOHC Request	Anticipated Leverage	Leverage Source	Total
Personnel	\$479,600	\$0		\$479,600
Contracts	\$220,000	\$0		\$220,000
Fee Acquisition w/ PILT	\$4,185,000	\$100,000	RIM	\$4,285,000
Fee Acquisition w/o PILT	\$700,000	\$0		\$700,000
Easement Acquisition	\$2,715,500	\$0		\$2,715,500
Easement Stewardship	\$325,000	\$0		\$325,000
Travel	\$6,100	\$5,000	Private	\$11,100
Professional Services	\$145,000	\$0		\$145,000
Direct Support Services	\$87,700	\$53,300	Private	\$141,000
DNR Land Acquisition Costs	\$80,000	\$0		\$80,000
Capital Equipment	\$0	\$0		\$0
Other Equipment/Tools	\$8,800	\$0		\$8,800
Supplies/Materials	\$2,600	\$0		\$2,600
DNR IDP	\$150,000	\$0		\$150,000
Total	\$9,105,300	\$158,300	-	\$9,263,600

## Personnel

Position	FTE	Over # of years	LSOHC Request	Anticipated Leverage	Leverage Source	Total
Project Administrator	0.30	3.00	\$25,000	\$0		\$25,000
Protection & Legal Staff	0.30	3.00	\$152,000	\$0		\$152,000
Program Management	0.35	4.00	\$168,000	\$0		\$168,000
Easement Processing	0.64	3.00	\$134,600	\$0		\$134,600
Total	1.59	13.00	\$479,600	\$0		\$479,600

## Budget and Cash Leverage by Partnership

BudgetName	Partnership	LSOHC Request	Anticipated Leverage	Leverage Source	Total
Personnel	MHB	\$25,000	\$0		\$25,000
Contracts	MHB	\$65,000	\$0		\$65,000
Fee Acquisition w/ PILT	MHB	\$0	\$0		\$0
Fee Acquisition w/o PILT	MHB	\$0	\$0		\$0
Easement Acquisition	MHB	\$0	\$0		\$0
Easement Stewardship	MHB	\$0	\$0		\$0
Travel	MHB	\$0	\$0		\$0
Professional Services	MHB	\$0	\$0		\$0
Direct Support Services	MHB	\$0	\$0		\$0
DNR Land Acquisition Costs	MHB	\$0	\$0		\$0
Capital Equipment	MHB	\$0	\$0		\$0
Other Equipment/Tools	MHB	\$0	\$0		\$0
Supplies/Materials	MHB	\$0	\$0		\$0
DNR IDP	MHB	\$0	\$0		\$0
Total	-	\$90,000	\$0		\$90,000

## Personnel - MHB

Position	FTE	Over # of years	LSOHC Request	Anticipated Leverage	Leverage Source	Total
Project Administrator	0.30	3.00	\$25,000	\$0		\$25,000
Total	0.30	3.00	\$25,000	\$0		\$25,000

BudgetName	Partnership	LSOHC Request	Anticipated Leverage	Leverage Source	Total
Personnel	TPL	\$152,000	\$0		\$152,000
Contracts	TPL	\$50,000	\$0		\$50,000
Fee Acquisition w/ PILT	TPL	\$4,185,000	\$100,000	RIM	\$4,285,000

Fee Acquisition w/o PILT	TPL	\$700,000	\$0		\$700,000
Easement Acquisition	TPL	\$0	\$0		\$0
Easement Stewardship	TPL	\$0	\$0		\$0
Travel	TPL	\$0	\$5,000	Private	\$5,000
Professional Services	TPL	\$145,000	\$0		\$145,000
Direct Support Services	TPL	\$53,300	\$53,300	Private	\$106,600
DNR Land Acquisition Costs	TPL	\$80,000	\$0		\$80,000
Capital Equipment	TPL	\$0	\$0		\$0
Other Equipment/Tools	TPL	\$0	\$0		\$0
Supplies/Materials	TPL	\$0	\$0		\$0
DNR IDP	TPL	\$150,000	\$0		\$150,000
Total		\$5,515,300	\$158,300		\$5,673,600

### Personnel - TPL

Position	FTE	Over # of years	LSOHC Request	Anticipated Leverage	Leverage Source	Total
Protection & Legal Staff	0.30	3.00	\$152,000	\$0		\$152,000
Total	0.30	3.00	\$152,000	\$0		\$152,000

Budget Name	Partnership	LSOHC Request	Anticipated Leverage	Leverage Source	Total
Personnel	BWSR	\$302,600	\$0		\$302,600
Contracts	BWSR	\$105,000	\$0		\$105,000
Fee Acquisition w/ PILT	BWSR	\$0	\$0		\$0
Fee Acquisition w/o PILT	BWSR	\$0	\$0		\$0
Easement Acquisition	BWSR	\$2,715,500	\$0		\$2,715,500
Easement Stewardship	BWSR	\$325,000	\$0		\$325,000
Travel	BWSR	\$6,100	\$0		\$6,100
Professional Services	BWSR	\$0	\$0		\$0
Direct Support Services	BWSR	\$34,400	\$0		\$34,400
DNR Land Acquisition Costs	BWSR	\$0	\$0		\$0
Capital Equipment	BWSR	\$0	\$0		\$0
Other Equipment/Tools	BWSR	\$8,800	\$0		\$8,800
Supplies/Materials	BWSR	\$2,600	\$0		\$2,600
DNR IDP	BWSR	\$0	\$0		\$0
Total		\$3,500,000	\$0		\$3,500,000

### Personnel - BWSR

Position	FTE	Over # of years	LSOHC Request	Anticipated Leverage	Leverage Source	Total
Program Management	0.35	4.00	\$168,000	\$0		\$168,000
Easement Processing	0.64	3.00	\$134,600	\$0		\$134,600
Total	0.99	7.00	\$302,600	\$0		\$302,600

Amount of Request: \$9,105,300  
Amount of Leverage: \$158,300  
Leverage as a percent of the Request: 1.74%  
DSS + Personnel: \$567,300  
As a % of the total request: 6.23%  
Easement Stewardship: \$325,000  
As a % of the Easement Acquisition: 11.97%

### How did you determine which portions of the Direct Support Services of your shared support services is direct to this program:

BWSR calculates direct support services costs that are directly related to and necessary for each request based on the type of work being done. DSS requested by The Trust for Public Land is based upon their federal rate, which has been approved by the DNR. 50% of TPL's DSS costs are requested from the OHF grant, 50% is contributed as leverage.



**What is included in the contracts line?**

Funding for contracts with a Project Coordinator (MHB), Landowner Outreach (MHB), easement processing by SWCDs (BWSR), and potential site clean-up and initial restoration activities (TPL).

**Does the amount in the travel line include equipment/vehicle rental? - No**

**Explain the amount in the travel line outside of traditional travel costs of mileage, food, and lodging:**

Not Listed

**Describe and explain leverage source and confirmation of funds:**

TPL: One-half of Direct Support Services cost and all in-state travel costs are provided as privately funded leverage. Additionally, TPL will attempt to leverage fee-acquisition with partial donations of the appraised value of parcel(s).

**Does this proposal have the ability to be scalable? - Yes**

**Tell us how this project would be scaled and how administrative costs are affected, describe the “economy of scale” and how outputs would change with reduced funding, if applicable:**

A reduction in funding would reduce outputs proportionally. However, 25 landowners are committed to doing a conservation easement when funding is available; easements on those parcels would collectively cost \$2,000,000 for easement acquisition. Program administration and coordination would remain relatively the same regardless of the appropriation.

**What is the cost per easement for stewardship and explain how that amount is calculated?**

Perpetual monitoring and enforcement costs have been calculated at \$6,500 per easement. This value is based on using local SWCD staff for monitoring and landowner relations and existing enforcement authorities. The amount listed for Easement Stewardship covers costs of the SWCD regular monitoring, BWSR oversight, and any enforcement necessary.

## Output Tables

**Table 1a. Acres by Resource Type**

Type	Wetlands	Prairies	Forest	Habitats	Total
Restore	0	0	0	0	0
Protect in Fee with State PILT Liability	0	0	1,070	0	1,070
Protect in Fee W/O State PILT Liability	0	0	180	0	180
Protect in Easement	0	0	2,000	0	2,000
Enhance	0	0	0	0	0
Total	0	0	3,250	0	3,250

**Table 2. Total Requested Funding by Resource Type**

Type	Wetlands	Prairies	Forest	Habitats	Total
Restore	\$0	\$0	\$0	\$0	\$0
Protect in Fee with State PILT Liability	\$0	\$0	\$4,770,300	\$0	\$4,770,300
Protect in Fee W/O State PILT Liability	\$0	\$0	\$790,000	\$0	\$790,000
Protect in Easement	\$0	\$0	\$3,545,000	\$0	\$3,545,000
Enhance	\$0	\$0	\$0	\$0	\$0
Total	\$0	\$0	\$9,105,300	\$0	\$9,105,300

**Table 3. Acres within each Ecological Section**

Type	Metro/Urban	Forest/Prairie	SE Forest	Prairie	Northern Forest	Total
Restore	0	0	0	0	0	0
Protect in Fee with State PILT Liability	0	0	0	0	1,070	1,070
Protect in Fee W/O State PILT Liability	0	0	0	0	180	180
Protect in Easement	0	100	0	0	1,900	2,000
Enhance	0	0	0	0	0	0
Total	0	100	0	0	3,150	3,250

**Table 4. Total Requested Funding within each Ecological Section**

Type	Metro/Urban	Forest/Prairie	SE Forest	Prairie	Northern Forest	Total
Restore	\$0	\$0	\$0	\$0	\$0	\$0
Protect in Fee with State PILT Liability	\$0	\$0	\$0	\$0	\$4,770,300	\$4,770,300
Protect in Fee W/O State PILT Liability	\$0	\$0	\$0	\$0	\$790,000	\$790,000
Protect in Easement	\$0	\$177,300	\$0	\$0	\$3,367,700	\$3,545,000
Enhance	\$0	\$0	\$0	\$0	\$0	\$0
Total	\$0	\$177,300	\$0	\$0	\$8,928,000	\$9,105,300

**Table 5. Average Cost per Acre by Resource Type**

Type	Wetlands	Prairies	Forest	Habitats
Restore	\$0	\$0	\$0	\$0
Protect in Fee with State PILT Liability	\$0	\$0	\$4,458	\$0
Protect in Fee W/O State PILT Liability	\$0	\$0	\$4,389	\$0
Protect in Easement	\$0	\$0	\$1,773	\$0
Enhance	\$0	\$0	\$0	\$0

**Table 6. Average Cost per Acre by Ecological Section**

Type	Metro/Urban	Forest/Prairie	SE Forest	Prairie	Northern Forest
Restore	\$0	\$0	\$0	\$0	\$0
Protect in Fee with State PILT Liability	\$0	\$0	\$0	\$0	\$4,458
Protect in Fee W/O State PILT Liability	\$0	\$0	\$0	\$0	\$4,389
Protect in Easement	\$0	\$1,773	\$0	\$0	\$1,772
Enhance	\$0	\$0	\$0	\$0	\$0

*Automatic system calculation / not entered by managers*

**Target Lake/Stream/River Feet or Miles**

8 miles of Mississippi river, headwaters lakes, and major river tributaries.

I have read and understand Section 15 of the Constitution of the State of Minnesota, Minnesota Statute 97A.056, and the Call for Funding Request. I certify I am authorized to submit this proposal and to the best of my knowledge the information provided is true and accurate.

## Parcel List

Explain the process used to select, rank and prioritize the parcels:

Parcels were selected based on one or a combination of the following sources: the GIS-science based screening for priority parcels, county land department requests, DNR interest in WMA additions or acquisitions, and landowner interest.

### Section 1 - Restore / Enhance Parcel List

No parcels with an activity type restore or enhance.

### Section 2 - Protect Parcel List

#### Aitkin

Name	TRDS	Acres	Est Cost	Existing Protection?	Hunting?	Fishing?
Aitkin Lake	05023217	151	\$850,000	No	Full	Full
Big Sandy	05023229	283	\$900,000	No	Full	Full
McGregor	05023209	442	\$660,000	No	Full	Full
World WMA Addition	04924203	391	\$860,000	No	Full	Full

#### Beltrami

Name	TRDS	Acres	Est Cost	Existing Protection?	Hunting?	Fishing?
Island Point	14632214	166	\$430,000	No	Full	Full
Wolf Lake II	14632236	181	\$720,000	No	Full	Full

#### Cass

Name	TRDS	Acres	Est Cost	Existing Protection?	Hunting?	Fishing?
Leech River	14426213	105	\$160,000	No	Full	Full

#### Crow Wing

Name	TRDS	Acres	Est Cost	Existing Protection?	Hunting?	Fishing?
Brainerd Forest	13427204	28	\$130,000	No	Full	Full
Crow Wing County Forest Addition	04729219	22	\$75,000	No	Full	Full
Indian Jack WMA Addition	13626234	35	\$120,000	No	Full	Full
Mississippi River-Buffalo	04431203	170	\$680,000	No	Full	Full

#### Hubbard

Name	TRDS	Acres	Est Cost	Existing Protection?	Hunting?	Fishing?
LaSalle Creek SNA	14435235	350	\$800,000	No	Full	Full

### Section 2a - Protect Parcel with Bldgs

No parcels with an activity type protect and has buildings.

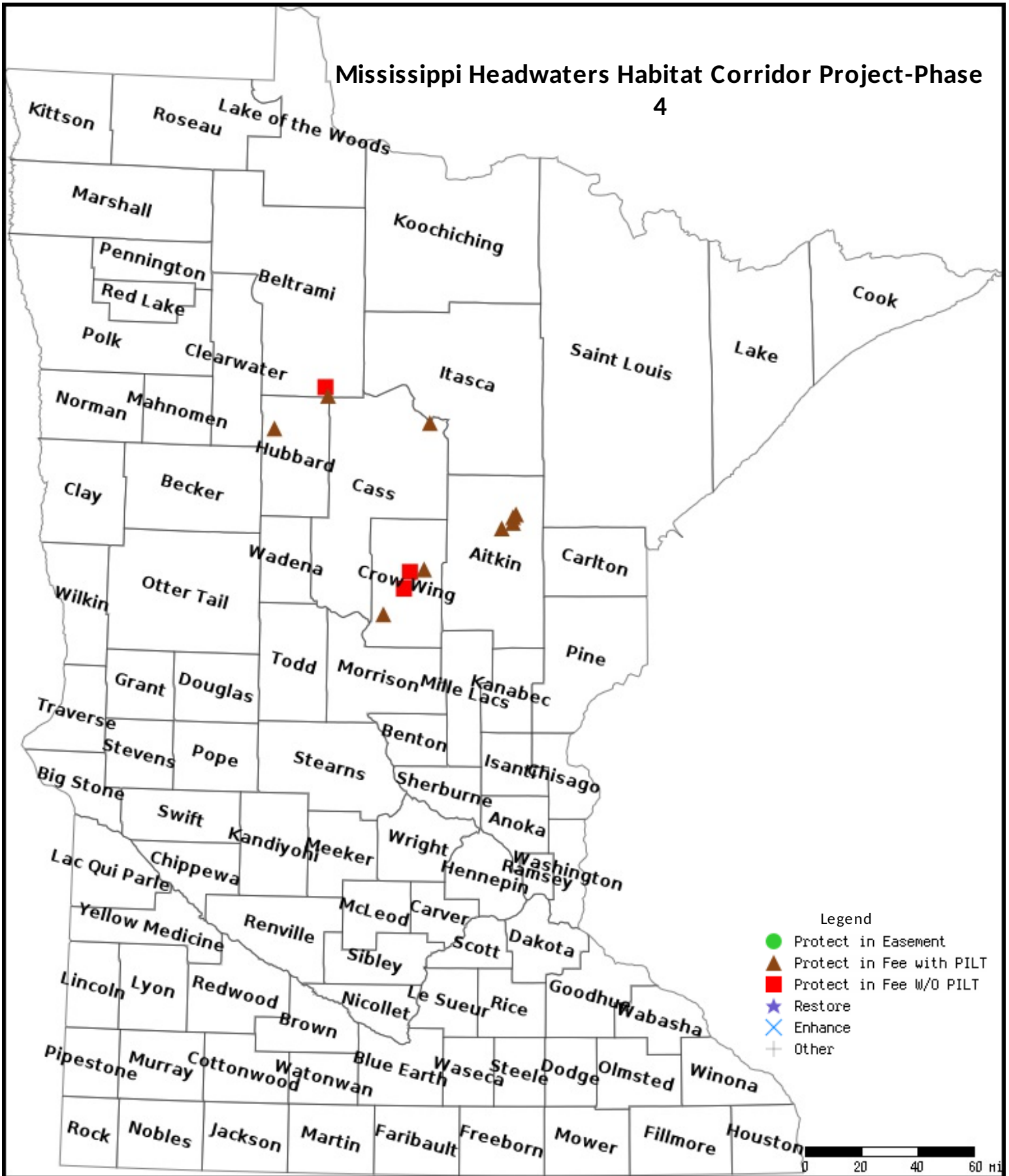
### Section 3 - Other Parcel Activity

No parcels with an other activity type.

# Parcel Map

## Mississippi Headwaters Habitat Corridor Project-Phase

4



Data Generated From Parcel List



# Mississippi Headwaters Habitat Corridor Project– Phase 4 Request: \$9,105,300

## Program Goals/Focus:

- Permanently protect more than 8 miles of critical shorelands and 3,250 acres of high quality forested wildlife habitats along the first 400 miles of the Mississippi River, its major tributaries and headwaters lakes/reservoirs for the benefit of fish, game and non-game wildlife, and migratory waterfowl.
- Achieve permanent land conservation via fee title acquisition and RIM conservation easements to create and expand contiguous habitat protection corridors and complexes and reduce forest fragmentation.
- Enhance public recreational opportunities along the project corridor.
- Focus on priority parcels identified using a GIS science-based methodology.

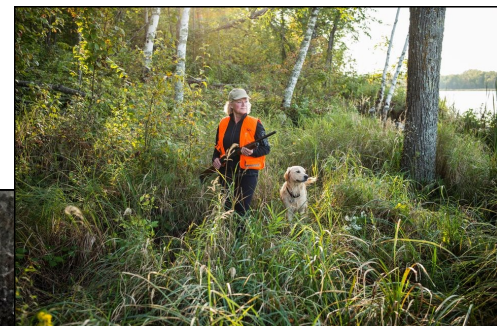
## Partners

- Mississippi Headwaters Board
- The Trust for Public Land
- BWSR and 8 Headwaters County SWCDs
- With stakeholder support from:  
The MN DNR  
The Nature Conservancy



## Accomplishments To Date Phases 1-3:

- ⇒ Permanent protection of 1,966 acres and 14 miles of river shoreline.
- ⇒ Two additions to a state forest, one addition to a county forest, creation of a new WMA, and 11 conservation easements.
- ⇒ Projects are in process that will protect an additional 1,800 acres and 14+ miles of shoreline.

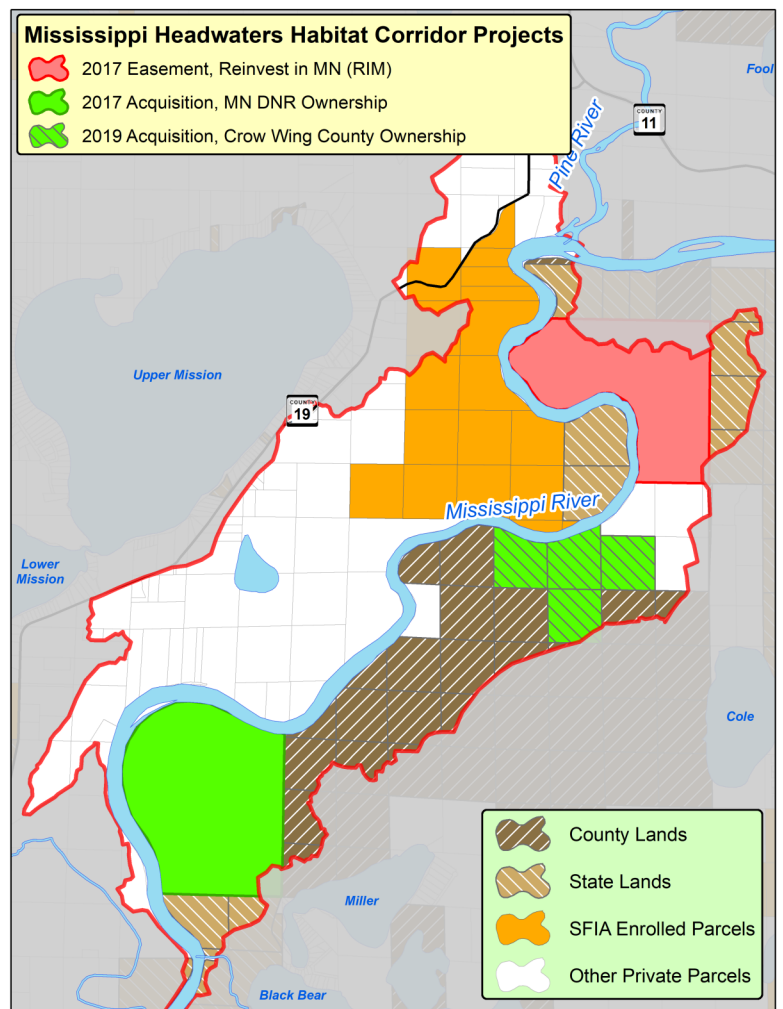


## Why permanently protect critical shorelands and create contiguous habitat complexes?

- Game and non-game wildlife have four basic habitat needs that are provided through habitat complexes: cover against predators, water, places to raise their young, and adequate areas to move around in during varied life stages.
- Migratory waterfowl and wildlife need food and cover along the Mississippi Flyway.
- As lakes have become increasingly developed, there is more development pressure on or near the river, its tributaries, and headwaters lakes/reservoirs, which can cause fragmentation of critical habitats such as forests, shorelands, grasslands, and wetlands.
- Shoreland and land conservation reduce habitat fragmentation and ensures critical aquatic and upland habitat for healthy fish and wildlife populations.

This map is an example of how fee title acquisitions(2) and conservation easements (2) secured in this project worked together to create a large permanently protected habitat complex in Crow Wing County. The SFIA and state land across the river provides additional habitat protection.

This habitat complex now provides 1,672 acres of contiguous and protected upland habitat and 9 miles of protected river shoreland.



Mississippi Headwaters Habitat Corridor Project		
Appropriations to Date		Amount Remaining
ML 16	\$3,150,000	Spent, closing out June 30, 2019
ML 17	\$2,396,000	85% spent or obligated to projects
ML 18	\$2,998,000	



**Mississippi Headwaters Habitat Corridor Project- Phase 4 Fee-Title Acquisition Parcel List**

Parcel Name	County	TRDS	Budgeting			Existing Protection?	Open to hunting per State of Minnesota Regulations?	Open to fishing per State of Minnesota Regulations?	Status	# of Buildings / Improvements	Buildings / Improvements Description	Value of Buildings / Improvements	Disposition of Improvements
			# of Acres	Estimated Cost	Activity								
Wold WMA Addition	Aitkin	4924203	391	\$860,000	Protect in Fee w PILT	No	Full	Full	Proposed	NA	NA	NA	NA
McGregor	Aitkin	502329	442	\$660,000	Protect in Fee w PILT	No	Full	Full	Proposed	NA	NA	NA	NA
Aitkin Lake	Aitkin	5023217	151	\$850,000	Protect in Fee w PILT	No	Full	Full	Proposed	NA	NA	NA	NA
Big Sandy	Aitkin	5023229	283	\$900,000	Protect in Fee w PILT	No	Full	Full	Proposed	NA	NA	NA	NA
Island Point	Beltrami	14632214	166	\$430,000	Protect in Fee w/o PILT	No	Full	Full	Proposed	NA	NA	NA	NA
Wolf Lake II	Beltrami	14632236	181	\$720,000	Protect in Fee w PILT	No	Full	Full	Proposed	NA	NA	NA	NA
Leech River	Cass	14426213	105	\$160,000	Protect in Fee w PILT	No	Full	Full	Proposed	NA	NA	NA	NA
Brainerd Forest	Crow Wing	13427204	28	\$130,000	Protect in Fee w/o PILT	No	Full	Full	Proposed	NA	NA	NA	NA
Crow Wing County Forest Addition	Crow Wing	4729219	22	\$75,000	Protect in Fee w/o PILT	No	Full	Full	Proposed	NA	NA	NA	NA
Mississippi River-Buffalo	Crow Wing	443103	170	\$680,000	Protect in Fee w PILT	No	Full	Full	Proposed	NA	NA	NA	NA
Indian Jack Lake WMA Addition	Crow Wing	13626234	35	\$120,000	Protect in Fee w PILT	No	Full	Full	Proposed	NA	NA	NA	NA
LaSalle Creek SNA	Hubbard	14435235	350	\$800,000	Protect in Fee w PILT	No	Full	Full	Proposed	NA	NA	NA	NA