



Lessard-Sams Outdoor Heritage Council

Fiscal Year 2021 / ML 2020 Request for Funding

Date: May 30, 2019

Program or Project Title: Northern Forest Habitat Conservation

Funds Requested: \$10,302,000

Manager's Name: Kris Larson

Title: Executive Director

Organization: Minnesota Land Trust

Address: 2356 University Avenue W

Address 2: Suite 240

City: St. Paul, MN 55114

Office Number: 651-917-6292

Mobile Number: 651-894-3870

Email: kl Larson@mnland.org

County Locations: St. Louis

Eco regions in which work will take place:

- Northern Forest

Activity types:

- Protect in Fee

Priority resources addressed by activity:

- Forest

Abstract:

The Minnesota Land Trust, The Conservation Fund and St. Louis County seek to strategically acquire up to 10,200 acres of former industrial forest land to permanently maintain large, unfragmented blocks of northeast forest habitats vital to regional wildlife populations and sustainable forestry.

Design and scope of work:

St. Louis County lies at the center of Minnesota's iconic northern forest landscape. Northern forests provide high quality wildlife habitat, clean water, sustainable forestry products and recreational opportunities because of the large, contiguous, publicly accessible lands. The restructuring of the global timber industry has put Minnesota's forest lands at risk as industrial owners divest land assets. The Minnesota Forest Resources Council identified parcelization of these lands as the primary threat to the ecological and economic health of Minnesota's forests. To ensure healthy game and non-game wildlife populations and to maintain historic public access points for hunting and fishing for future generations the integrity of large forest tracts must be preserved. The time is now to secure these lands to preserve the quality of northern forest habitats and provide enduring public benefits.

Goals and Scope of Work

The goal of this project is to ensure long term sustainability of game species such as, white tail deer and ruffed grouse as well as Species of Greatest Conservation Need (SGCN) including moose, spruce grouse, northern long-eared bat and Canada lynx in St. Louis County. Our objective is to acquire fee title to up to 10,200 acres of strategically located for-sale industrial forest land to fill the gaps between existing public forest lands managed by St. Louis County Lands & Minerals Department (SLCMD). Sustainable, long-term management of large unfragmented forest tracts are essential to guarantee robust wildlife populations for future generations to enjoy and appreciate. The acquired lands help secure the future of the forested landscape in northern Minnesota by enhancing sustainable management of St. Louis County's forest resources and ensuring permanent public access to these large contiguous forest tracts.

All of the lands to be purchased through this appropriation are at-risk former industrial forest lands. PotlatchDeltic Corporation (Potlatch) is actively divesting more than 10,200 acres in St. Louis County, which puts public access for hunting and fishing at imminent

risk. The Minnesota Land Trust (MLT) and project partners, St. Louis County Lands & Minerals Department (SLCLMD) and The Conservation Fund (TCF), will prioritize and acquire parcels that best preserve forest integrity and public access.

The Minnesota Land Trust (MLT) with the assistance of The Conservation Fund (TCF) will use appropriated funds for the fee-title purchase of strategic forest parcels. The lands will then be transferred to SLCLMD for permanent conservation and management. All lands will be open to public hunting and fishing. The St. Louis County Board unanimously approved this project (Attachment A).

Additionally, the Project Partners will leverage this OHF appropriation to protect a supplemental 3,500 acres of forest habitat for public access. SLC will transfer title of select tax forfeit parcels that complete Duluth's planned natural areas network to the City contingent on this forestland acquisition. This leverage will expand the public benefit of this project to more than 13,700 acres. Please refer to Criteria #9, Leverage Funds or other Sources, below for a description of this unique opportunity.

Which sections of the Minnesota Statewide Conservation and Preservation Plan are applicable to this project:

- H3 Improve connectivity and access to recreation
- LU8 Protect large blocks of forest land

Which other plans are addressed in this proposal:

- Minnesota Forest Resource Council Landscape Plans
- St. Louis County Land Use Plan 2018

Describe how your program will advance the indicators identified in the plans selected:

The plans selected focus on the need to protect forest land from fragmentation and conversion to non-forest uses to preserve habitat quality and public access. Our priority is to select parcels that best link existing public landownership, facilitate sustainable forest management and include sensitive habitats. Our parcel prioritization process uses the collective expertise of the project partners in forest biology and sustainable forestry as well as existing data sources such as MN Wildlife Action Plan.

St. Louis County's recently completed Land Use Plan's overall intent is to support county goals and objectives for growth, development and conservation. This project supports the goals and objectives of the Land Use Plan related to the natural environment, economic development, recreation and tourism, public safety and land use elements.

Which LSOHC section priorities are addressed in this proposal:

Northern Forest:

- Provide access to manage habitat on landlocked public properties or protect forest land from parcelization and fragmentation through fee acquisition, conservation or access easement

Describe how your program will produce and demonstrate a significant and permanent conservation legacy and/or outcomes for fish, game, and wildlife as indicated in the LSOHC priorities:

The LSOHC Northern Forest Section priorities list the need to protect larger blocks of habitat that directly border existing public forestland. This project concentrates on fee-title acquisition of strategically-important land to connect, or add, large blocks of forest managed by SLCLMD. These properties will be transferred to and designated as permanent conservation and included in SLCLMD sustainable forestry portfolio. This project also preserves and enhances public access for outdoors-related recreation.

In addition, the selection criteria we are using for parcels includes maintaining intact forest landscapes through an analysis of ownership pattern as well as considering conservation priorities included in the State Wildlife Action Plan, MBS Sites of Biodiversity Significance and TNC Climate Change resiliency. This ensures long-term benefit to game species such as white-tailed deer, Ruffed Grouse, and woodcock, the project area provides habitat for numerous songbirds and species listed as endangered, threatened, or of special concern including northern long-eared bat (federally endangered), moose, gray wolf, Canadian lynx, Bald Eagle, Boreal Owl, Golden-winged Warbler, big brown bat and others.

Describe how the proposal uses science-based targeting that leverages or expands corridors and complexes, reduces fragmentation or protects areas identified in the MN County Biological Survey:

St. Louis County developed a GIS project to assist with selecting and prioritizing parcels. The initial parcel selection will use spatial analysis, remote sensing and land metrics such as adjacency to SLCLMD managed forest, land form, forest cover, landscape position and hydrology to select suitable forest parcels to include in the acquisition. Project partners then use existing, publicly available

conservation data in GIS to prioritize selected parcels to best protect known existing fish and wildlife habitat and reduce fragmentation of Minnesota's northern forests. Conservation data layers include Minnesota Biological Survey Sites of Biodiversity Significance, MN Wildlife Action Plan, The Nature Conservancy's Climate Resilience and other pertinent sources to identify important habitat areas.

This methodology will assist in developing large, contiguous blocks of high-quality forest habitat that can be managed sustainably. Parcels that do not meet forest conservation criteria will be small, isolated, or poor quality habitat and more suitable recreational, or residential development.

How does the proposal address habitats that have significant value for wildlife species of greatest conservation need, and/or threatened or endangered species, and list targeted species:

Most SGCN native to the northern forests are considered interior forest species. These species require large tracts of unfragmented forest for foraging, breeding and raising young. This proposal directly addresses the greatest threat to existing large block forests in St. Louis County. Subdividing large interior forest parcels into smaller retail lots that will either see residential, or other human development disturbance. SLCLMD uses the most current information on the distribution and ecology of native plants and animals, native plant communities and the most intact landscapes when evaluating which parcels will be selected for inclusion in the project.

Identify indicator species and associated quantities this habitat will typically support:

Ovenbird

Birds are good indicators for assessing the health of forests because they are relatively easy to monitor and their survival integrates complicated variables like climate, disturbance, habitat fragmentation and forest condition. Factors that also affect the populations of more reclusive SGCN species such as moose and Canada lynx. Ovenbirds are common in upland deciduous, mixed coniferous-deciduous, and coniferous forests statewide. Ovenbirds nest on the ground in leaf litter, typically in young to relatively mature forests. The LSOHC Northern Forest planning section recommends this species as an indicator for intact, healthy upland forest. An average territory is roughly 1 pair for every 2.5 acres. This project could result in 4800 pairs.

Ruffed Grouse.

The Ruffed Grouse is the quintessential upland game bird of Minnesota. The Minnesota Breeding Bird atlas landcover suitability map for the Ruffed Grouse illustrates that the most suitable habitat in Minnesota for the species are northeastern forests. Hen home ranges vary from 5-35 acres, depending on natural population cycles. This project provides habitat for up to 2400 birds. Each of which lays an average of 7 eggs/year.

Whitetail deer

Whitetail deer are one of the most popular sport hunting targets in Minnesota. The northeast forest averages approximately 15 deer/square mile. Since this project will preserve larger habitat complexes it will ensure hunter access to habitat for a minimum of 270 deer each year.

Outcomes:

Programs in the northern forest region:

- Forestlands are protected from development and fragmentation *Northern Forestlands are protected to promote healthy and diverse forests, keep water clean and help maintain healthy wildlife populations This project will permanently protect the plants, animals, natural communities and wildlife habitats found in the forests, wetlands, and shorelines of approximately 10,200 acres of at-risk land with fee title acquisition. The project will permanently restrict incompatible land uses such as development, subdivision, land conversion or other activities that would damage those features. The project will prevent habitat loss, habitat fragmentation and associated wildlife population declines associated with development and fragmentation.*

How will you sustain and/or maintain this work after the Outdoor Heritage Funds are expended:

Forest lands acquired will become part of St. Louis County's Forest system. St. Louis County Lands & Minerals Department will manage the acquired lands as permanent forest lands. SLCLMD practices are certified by the Sustainable Forestry Initiative (SFI). SLCLMD mission is to manage its forests for the variety of benefits they provide including healthy forests, wildlife habitat and fisheries as well as providing accessible recreational opportunities and forest products which all contribute to local community viability.

Explain the things you will do in the future to maintain project outcomes:

Year	Source of Funds	Step 1	Step 2	Step 3
2021 & ongoing	St. Louis County	Monitor and manage lands consistent with forest certification and management plans		

What is the degree of timing/opportunistic urgency and why it is necessary to spend public money for this work as soon as possible:

The northern forests are still facing unprecedented change as the forest product industry continues to divest vast amounts of land. Historically, these industrial lands were managed forests open to the public for hunting and fishing. Now, as these lands are being sold many properties are being converted to non-forest development. This fragments the forest degrading overall habitat quality, eliminates public access and creates an increased burden on Counties to provide new roads, powerlines and services. Potlatch has sold 70% of its statewide holdings in less than 20 years. In St. Louis County, Potlatch ownership has diminished from approximately 110,000 acres to 15,000 acres. Fortunately, some of these properties have been protected through collaborative projects such as this one, and now we have our last chance to acquire those lands that add public benefits of robust fish and wildlife populations, access for outdoor recreation.

Does this program include leverage in funds:

No

Relationship to other funds:

- Not Listed

Describe the relationship of the funds:

Not Listed

Per MS 97A.056, Subd. 24, Any state agency or organization requesting a direct appropriation from the OHF must inform the LSOHC at the time of the request for funding is made, whether the request is supplanting or is a substitution for any previous funding that was not from a legacy fund and was used for the same purpose:

This request is not supplanting or substituting for any other funding. This is new work that will not happen without the support of OHF.

Describe the source and amount of non-OHF money spent for this work in the past:

Appropriation Year	Source	Amount
2016	Private Corporations (multiple)	15000000
2016	Private Individual	380000
2017	Federal Land & Water Conservation Fund (LWCF)	13500500
2017	Federal (USFWS)	2000000

Activity Details

Requirements:

If funded, this proposal will meet all applicable criteria set forth in MS 97A.056 - **Yes**

Will county board or other local government approval be formally sought prior to acquisition, per 97A.056 subd 13(j) - **Yes**

Is the land you plan to acquire (fee title) free of any other permanent protection - **Yes**

Do you anticipate federal funds as a match for this program - **No**

Land Use:

Will there be planting of corn or any crop on OHF land purchased or restored in this program - **No**

Is this land currently open for hunting and fishing - **No**

Will the land be open for hunting and fishing after completion - **Yes**

All lands acquired will be fully open for public hunting, fishing and other wildland recreation according to State of Minnesota regulations.

Are there currently trails or roads on any of the acquisitions on the parcel list - **Yes**

Describe the types of trails or roads and the allowable uses:

There are existing minimally maintained roads and trails on the properties developed for timber harvest and management purposes.

Will the trails or roads remain and uses continue to be allowed after OHF acquisition - **Yes**

How will maintenance and monitoring be accomplished:

SLCLMD Foresters regularly access properties and monitor these trails and roads under its forest certification standards and Minnesota's Forest Management Guidelines. Road and trail maintenance may be completed as part of regular forestry operations.

Will new trails or roads be developed or improved as a result of the OHF acquisition - **Yes**

Describe the types of trails or roads and the allowable uses:

SLCLMD will evaluate the existing road and trail system for alignment with SLCLMD forestry and recreational priorities. Some roads will be maintained for forest management purposes, some roads may be retired. Additional roads and trails may be added as necessary for access in order to accomplish sustainable forestry activities. Roads may be designated for other allowable uses including hunting access and OHV trails where appropriate.

How will maintenance and monitoring be accomplished:

SLCLMD Foresters regularly access properties and monitor these trails and roads under its forest certification standards and Minnesota's Forest Management Guidelines. Road and trail maintenance may be completed as part of regular forestry operations.

Accomplishment Timeline

Activity	Approximate Date Completed
Negotiate with landowner and enter into purchase agreement	August 2021
Conduct due diligence for acquisition of properties (appraisals, title work, etc)	March 2022
Acquire fee title to selected properties	August 2022
Transfer properties to St. Louis County	December 2022

Budget Spreadsheet

Total Amount of Request: \$10,302,000

Budget and Cash Leverage

BudgetName	LSOHC Request	Anticipated Leverage	Leverage Source	Total
Personnel	\$108,000	\$0		\$108,000
Contracts	\$120,000	\$0		\$120,000
Fee Acquisition w/ PILT	\$0	\$0		\$0
Fee Acquisition w/o PILT	\$10,000,000	\$0		\$10,000,000
Easement Acquisition	\$0	\$0		\$0
Easement Stewardship	\$0	\$0		\$0
Travel	\$5,000	\$0		\$5,000
Professional Services	\$30,000	\$0		\$30,000
Direct Support Services	\$29,000	\$0		\$29,000
DNR Land Acquisition Costs	\$0	\$0		\$0
Capital Equipment	\$0	\$0		\$0
Other Equipment/Tools	\$0	\$0		\$0
Supplies/Materials	\$0	\$0		\$0
DNR IDP	\$10,000	\$0		\$10,000
Total	\$10,302,000	\$0	-	\$10,302,000

Personnel

Position	FTE	Over # of years	LSOHC Request	Anticipated Leverage	Leverage Source	Total
Land Protection staff	0.30	3.00	\$108,000	\$0		\$108,000
Total	0.30	3.00	\$108,000	\$0	-	\$108,000

Amount of Request: \$10,302,000

Amount of Leverage: \$0

Leverage as a percent of the Request: 0.00%

DSS + Personnel: \$137,000

As a % of the total request: 1.33%

Easement Stewardship: \$0

As a % of the Easement Acquisition: -%

How did you determine which portions of the Direct Support Services of your shared support services is direct to this program:

The Minnesota Land Trust determined our direct support services rate in a process that was approved by the DNR on March 17, 2017. The rate only includes allowable direct and necessary expenditures that are not captured in other line items in the budget. This DNR-approved rate is only applied to personnel expenses to determine the total amount of direct support services.

What is included in the contracts line?

Sub-contracts to assist completing real estate transactions including due diligence, appraisal, title work, negotiation, environmental survey or review, etc.

Does the amount in the travel line include equipment/vehicle rental? - No

Explain the amount in the travel line outside of traditional travel costs of mileage, food, and lodging:

none

Describe and explain leverage source and confirmation of funds:

none

Does this proposal have the ability to be scalable? - Yes

Tell us how this project would be scaled and how administrative costs are affected, describe the “economy of scale” and how outputs would change with reduced funding, if applicable:

The total fee acquisition could be scaled and would result in direct reduction in the output acres of habitat protected and result in additional proposals submitted in subsequent years. Administrative costs would not scale because they are based on the required due diligence for real estate transactions which are largely independent of size of property. This appropriation will be complete in one transaction. Subsequent proposals would duplicate administrative costs because each appropriation would be an independent transaction. The highest economy of scale is full funding for this project.

Output Tables

Table 1a. Acres by Resource Type

Type	Wetlands	Prairies	Forest	Habitats	Total
Restore	0	0	0	0	0
Protect in Fee with State PILT Liability	0	0	0	0	0
Protect in Fee W/O State PILT Liability	0	0	10,200	0	10,200
Protect in Easement	0	0	0	0	0
Enhance	0	0	0	0	0
Total	0	0	10,200	0	10,200

Table 2. Total Requested Funding by Resource Type

Type	Wetlands	Prairies	Forest	Habitats	Total
Restore	\$0	\$0	\$0	\$0	\$0
Protect in Fee with State PILT Liability	\$0	\$0	\$0	\$0	\$0
Protect in Fee W/O State PILT Liability	\$0	\$0	\$10,302,000	\$0	\$10,302,000
Protect in Easement	\$0	\$0	\$0	\$0	\$0
Enhance	\$0	\$0	\$0	\$0	\$0
Total	\$0	\$0	\$10,302,000	\$0	\$10,302,000

Table 3. Acres within each Ecological Section

Type	Metro/Urban	Forest/Prairie	SE Forest	Prairie	Northern Forest	Total
Restore	0	0	0	0	0	0
Protect in Fee with State PILT Liability	0	0	0	0	0	0
Protect in Fee W/O State PILT Liability	0	0	0	0	10,200	10,200
Protect in Easement	0	0	0	0	0	0
Enhance	0	0	0	0	0	0
Total	0	0	0	0	10,200	10,200

Table 4. Total Requested Funding within each Ecological Section

Type	Metro/Urban	Forest/Prairie	SE Forest	Prairie	Northern Forest	Total
Restore	\$0	\$0	\$0	\$0	\$0	\$0
Protect in Fee with State PILT Liability	\$0	\$0	\$0	\$0	\$0	\$0
Protect in Fee W/O State PILT Liability	\$0	\$0	\$0	\$0	\$10,302,000	\$10,302,000
Protect in Easement	\$0	\$0	\$0	\$0	\$0	\$0
Enhance	\$0	\$0	\$0	\$0	\$0	\$0
Total	\$0	\$0	\$0	\$0	\$10,302,000	\$10,302,000

Table 5. Average Cost per Acre by Resource Type

Type	Wetlands	Prairies	Forest	Habitats
Restore	\$0	\$0	\$0	\$0
Protect in Fee with State PILT Liability	\$0	\$0	\$0	\$0
Protect in Fee W/O State PILT Liability	\$0	\$0	\$1,010	\$0
Protect in Easement	\$0	\$0	\$0	\$0
Enhance	\$0	\$0	\$0	\$0

Table 6. Average Cost per Acre by Ecological Section

Type	Metro/Urban	Forest/Prairie	SEForest	Prairie	Northern Forest
Restore	\$0	\$0	\$0	\$0	\$0
Protect in Fee with State PILT Liability	\$0	\$0	\$0	\$0	\$0
Protect in Fee W/O State PILT Liability	\$0	\$0	\$0	\$0	\$1,010
Protect in Easement	\$0	\$0	\$0	\$0	\$0
Enhance	\$0	\$0	\$0	\$0	\$0

Automatic system calculation / not entered by managers

Target Lake/Stream/River Feet or Miles

0

I have read and understand Section 15 of the Constitution of the State of Minnesota, Minnesota Statute 97A.056, and the Call for Funding Request. I certify I am authorized to submit this proposal and to the best of my knowledge the information provided is true and accurate.

Parcel List

Explain the process used to select, rank and prioritize the parcels:

The methods for choosing which parcels to protect with this project that will reduce fragmentation of Minnesota's northern forests will be done in a GIS following these steps:

1. St. Louis County will initially select parcels that meet their criteria to include in their sustainable forest system including adjacency to SLCLMD managed forest, land form, forest cover, landscape position and hydrology.
2. Project partners will then prioritize selected parcels using existing, publicly available conservation data in GIS to prioritize selected parcels to best protect known existing fish and wildlife habitat and reduce fragmentation of Minnesota's northern forests. Conservation data layers include Minnesota Biological Survey Sites of Biodiversity Significance, MN Wildlife Action Plan, The Nature Conservancy's Climate Resilience and other pertinent sources to identify important habitat areas.

Section 1 - Restore / Enhance Parcel List

No parcels with an activity type restore or enhance.

Section 2 - Protect Parcel List

St. Louis

Name	TRDS	Acres	Est Cost	Existing Protection?	Hunting?	Fishing?
Industrial forest owner-scattered parcels	05815219	10,200	\$10,000,000	No		

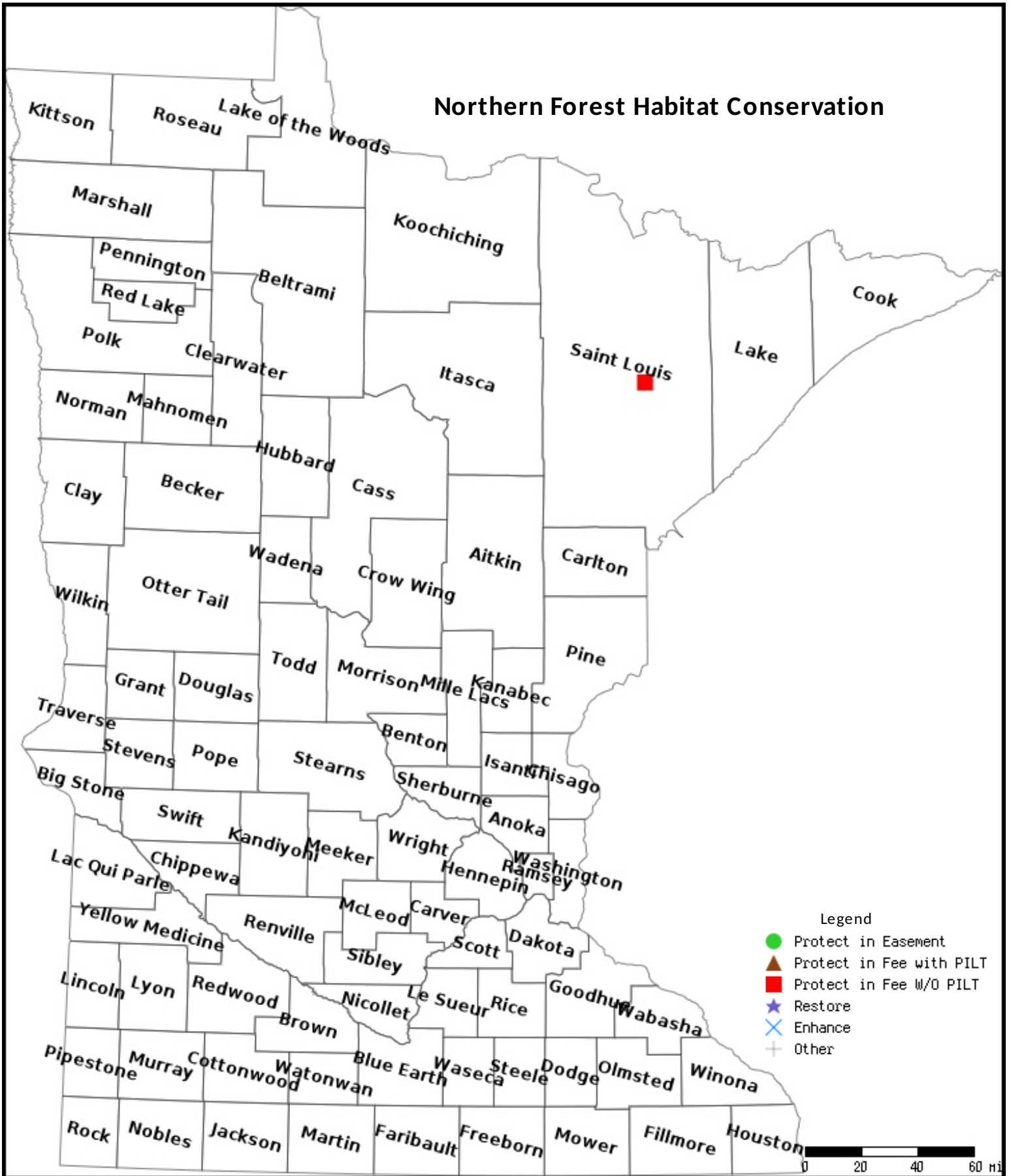
Section 2a - Protect Parcel with Bldgs

No parcels with an activity type protect and has buildings.

Section 3 - Other Parcel Activity

No parcels with an other activity type.

Parcel Map



Data Generated From Parcel List



Northern Forest Habitat Conservation

The Minnesota Land Trust is requesting \$10,302,000 to protect 10,200 acres of northeast forest.

The Minnesota Land Trust (MLT) is requesting \$10,302,000 to purchase fee-title to 10,200 acres of at-risk northern forest lands. All lands will be transferred to St. Louis County Land Department for permanent conservation and management. All lands will be open to the public for hunting and fishing and outdoor recreation. The St. Louis County Board unanimously approves this project.

How Does the Program Support State Goals?

The St. Louis County Forest Conservation project helps fulfill the goals of *Minnesota Statewide Conservation and Preservation Plan*, *Minnesota Forest Resource Council Northeast Landscape Plan*, *State Wildlife Action Plan*, and the *2018 St. Louis County Land Use Plan*.

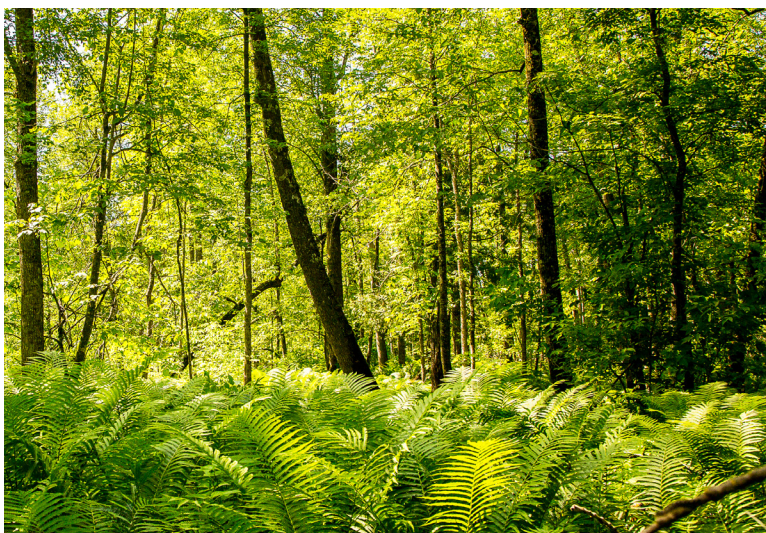
Outdoor Heritage Fund Request:

\$10,302,000 for:

- 10,200 acres of at-risk northern forest habitat

The Minnesota Land Trust is a nationally-accredited conservation organization with a twenty-seven year history of protecting Minnesota's most unique wildlife habitats around the state.

For more information about this proposal, please contact Kris Larson, Executive Director, at 218 722-4641 or klarson@mnland.org.

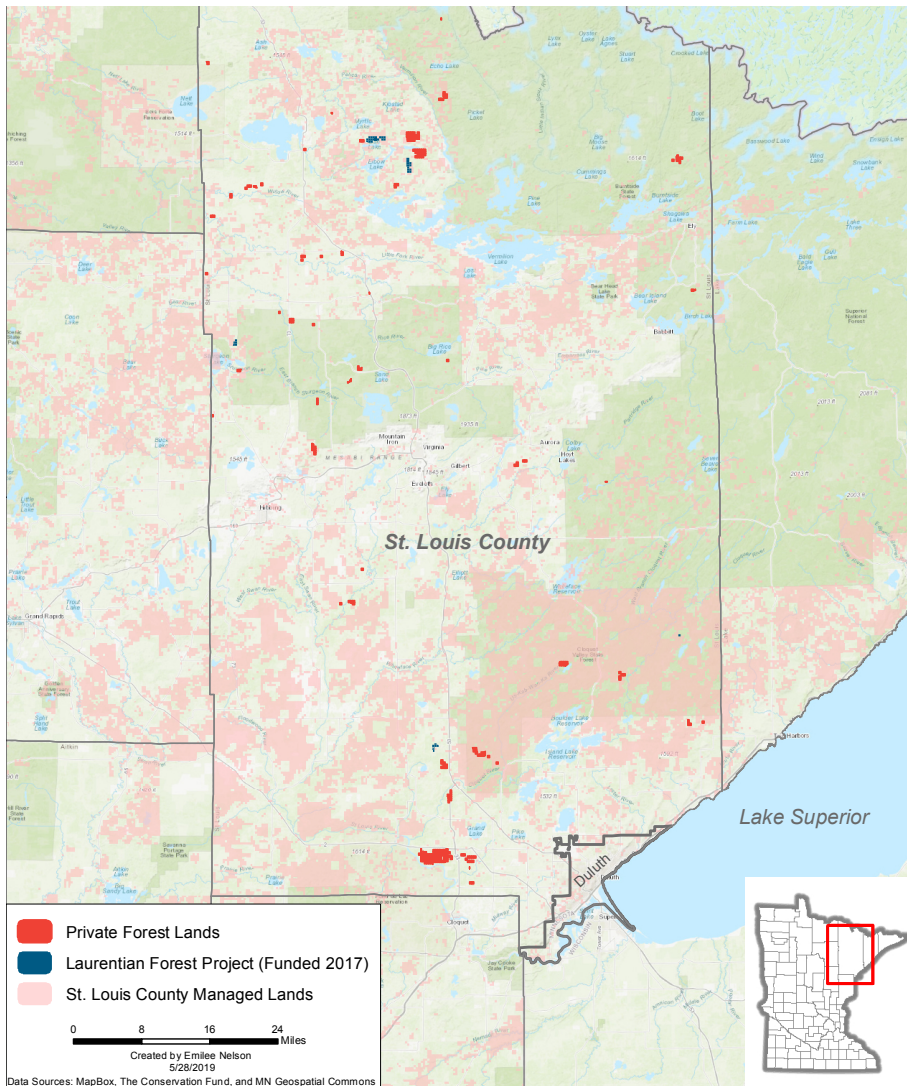


Hansi Johnson

What Are the Outcomes?

- Support habitat for game species including deer, ruffed grouse and woodcock.
- Protect SGCN populations including moose, golden winged warbler and Canada lynx.
- Preserve historic public access for hunting, fishing and outdoor recreation.
- Enhance local government investments in forest conservation and management.

The Land Trust, St. Louis County Land Department and The Conservation Fund will strategically target lands to build large forest complexes with existing public lands to maximize the public benefits.



Mission

The Minnesota Land Trust protects and restores Minnesota's most vital natural lands in order to provide wildlife habitat, clean water, outdoor experiences, and scenic beauty for generations to come.

What has Been Accomplished to Date?

This project is aligned with other OHF investments in the northeast region including Minnesota Forests for the Future and Minnesota Moose Habitat Collaborative.

The goals and objectives of this proposal are closely aligned with and compliment the 2017 appropriation Laurentian Forest - St. Louis County Habitat Project to protect 2,500 acres northern forest in St. Louis County.

Extending Outdoor Heritage Fund Conservation Impact

A unique component of this project provides outstanding leverage to OHF appropriations and extends the overall conservation impact to more than 13,700 acres of northeast forest habitats. As a condition of this proposal the City of Duluth will gain ownership of 3,500 acres of tax forfeit land within Duluth from St. Louis County to permanently preserve the public benefits of these forest lands. No OHF grant funds will be expended on the City of Duluth component of this project.

Contact Us

Minnesota Land Trust

2356 University Ave. W.
Suite 240
St. Paul, MN 55114

(651) 647-9590

mnland@mnland.org

Visit us on the web at
www.mnland.org



Resolution
of the
Board of County Commissioners
St. Louis County, Minnesota
Adopted on: May 28, 2019 Resolution No. 19-329
Offered by Commissioner: Jewell

Endorsement of Strategic Land Realignment Project and Support of Funding

WHEREAS, St. Louis County has an opportunity to acquire private forest lands in St. Louis County for the purpose of consolidating public land ownership, maintaining forest habitat, protecting water resources, and conserving traditional land uses such as forestry and recreation; and

WHEREAS, The City of Duluth wishes to acquire state tax forfeited lands within city limits which are highly valued for their recreational and environmental benefits and are critical to the City's recreational and storm water infrastructure; and

WHEREAS, The Minnesota Land Trust will submit an application to the Lessard-Sams Outdoor Heritage Council seeking Outdoor Heritage Funds to acquire private forest lands in St. Louis County; and

WHEREAS, The Conservation Fund will work directly with the private landowner on behalf of St. Louis County and the Minnesota Land Trust to negotiate the acquisition of private forest lands; and

WHEREAS, If the Minnesota Land Trust and The Conservation Fund are successful in obtaining funding and acquiring private forest land, they are proposing to convey the land to St. Louis County in exchange for an equal value of tax forfeited land to be conveyed to the City of Duluth; and

WHEREAS, A project agreement which addresses land conveyance provisions, land selection criteria, land classification, land valuation, land use conditions, land assessment relief, roles and responsibilities and other related matters shall be approved by the County Board prior to the county receiving or conveying any land;

THEREFORE, BE IT RESOLVED, That the St. Louis County Board endorses the strategic land realignment project, and supports full funding of the Minnesota Land Trust's application to the Lessard-Sams Outdoor Heritage Council to acquire private forest lands in St. Louis County;

RESOLVED FURTHER, That the St. Louis County Board shall authorize the appropriate county officials to execute an agreement which addresses land conveyance provisions, land selection criteria, land classification, land valuation, land use conditions, land assessment relief, roles and responsibilities and other related matters prior to the county receiving or conveying any land.

Commissioner Jewell moved the adoption of the Resolution and it was declared adopted upon the following vote:

Yeas – Commissioners Jewell, Olson, McDonald, Jugovich, Nelson and Chair Boyle - 6

Nays – None

STATE OF MINNESOTA
Office of County Auditor, ss.
County of St. Louis

I, **NANCY NILSEN**, Auditor of the County of St. Louis, do hereby certify that I have compared the foregoing with the original resolution filed in my office on the 28th day of May, A.D. 2019, and that this is a true and correct copy.

WITNESS MY HAND AND SEAL OF OFFICE at Duluth, Minnesota, this 28th day of May, A.D., 2019.

NANCY NILSEN, COUNTY AUDITOR

By

Clerk of the County Board/Deputy Auditor