

Lessard-Sams Outdoor Heritage Council

Fiscal Year 2020 / ML 2019 Request for Funding



Date: May 31, 2018

Program or Project Title: Martin County DNR WMA Acquisition Phase 3

Funds Requested: \$8,641,800

Manager's Name: Doug Hartke

Title: Grant Coordinator/Board Member

Organization: Fox Lake Conservation League, Inc.

Address: PO Box 212

City: Sherburn, MN 56171

Mobile Number: 507-236-1700

Email: dhartke@frontiernet.net

County Locations: Martin

Regions in which work will take place:

- Prairie

Activity types:

- Restore
- Protect in Fee

Priority resources addressed by activity:

- Wetlands
- Prairie

Abstract:

This program continues a partnership to restore diverse prairie and wetland habitat in areas adjacent to existing DNR Wildlife Management Areas. Parcels are identified by working with the representatives of local government, Windom Area DNR, Ducks Unlimited (DU), The Conservation Fund (TCF), and the Fox Lake Conservation League. Wetland restoration and additional grasslands are needed to make our WMA's sustainable. We will use the real estate expertise of TCF, wetland and grassland restoration expertise of DU, and the local efforts of the Fox Lake Conservation League to ensure success of this conservation effort.

Design and scope of work:

Selective project sites were targeted by the habitat need and land availability in areas adjacent to existing WMA's, existing habitat and lands already protected from development or other land use change. Work is designed to provide the most habitat value. The landscape will be restored as close as possible to conditions that existed prior to its conversion to agricultural production. Wetlands will be restored without the disruption of the natural drainage system. Native vegetation will be restored with a diverse range of species suitable to the landscape.

Which sections of the Minnesota Statewide Conservation and Preservation Plan are applicable to this project:

- H5 Restore land, wetlands and wetland-associated watersheds
- H7 Keep water on the landscape

Which other plans are addressed in this proposal:

- Long Range Duck Recovery Plan
- Minnesota's Wildlife Management Area Acquisition - The Next 50 Years

Describe how your program will advance the indicators identified in the plans selected:

Measurable reductions in quantity of water leaving targeted waterbodies and the improvement of water quality will advance the indicators in the referenced plans. Increasing wildlife numbers, species diversity and recreational opportunities also advance the objectives of both plans.

Which LSOHC section priorities are addressed in this proposal:

Prairie:

- Protect, enhance, or restore existing wetland/upland complexes, or convert agricultural lands to new wetland/upland habitat complexes

Describe how your program will produce and demonstrate a significant and permanent conservation legacy and/or outcomes for fish, game, and wildlife as indicated in the LSOHC priorities:

This project will protect high quality prairie and wetland habitat and restore additional prairie and wetland basins, expanding an area that is already recognized locally as a significant, permanent conservation legacy. The many partners involved in the conservation work in Martin County (MN DNR, USFWS, Pheasants Forever, Ducks Unlimited, Fox Lake Conservation League and The Conservation Fund) have made a substantial commitment to the protection, restoration and enhancement of its wetlands and grasslands. This has created a network of nearly 10,000 acres of protected lands in Martin County can be made sustainable for the production of wildlife species and the enjoyment of Minnesotans. This project will help to ensure that the investments made thus far will succeed.

Describe how the proposal uses science-based targeting that leverages or expands corridors and complexes, reduces fragmentation or protects areas identified in the MN County Biological Survey:

Our Martin County Conservation Planning Group includes wildlife group representatives, local government, and state agencies. There is a wide range of knowledge and interest within the group. Historic Information, the MN County Biological Survey, and local knowledge help identify areas where habitat restoration will likely be most beneficial for multiple reasons. Expanding habitat adjacent to existing high quality native habitat and habitat already protected by public ownership or perpetual conservation easements are often targeted. Sites with threatened, endangered and species in decline are good targets to build upon, especially when expansions can link sites to help expand corridors, and along water courses and lake chains.

How does the proposal address habitats that have significant value for wildlife species of greatest conservation need, and/or threatened or endangered species, and list targeted species:

This project will protect threatened habitats in Martin County. Native prairie and high quality wetland will be protected and expanded upon. Restoration sites will provide the opportunity to expand populations of at-risk and threatened plant species that the Martin SWCD has been propagating for introduction to permanently protected sites. Threatened species include, Eared gerardia (*Agalinis auriculata*); Sullivant's milkweed (*Asclepias sullivantii*); and Tuberous Indian plantain (*Cacalia tuberosa*). Other locally rare or Special Concern species include: Small white lady's slipper (*Cypripedium candidum*) and Rattlesnake master (*Eryngium yuccifolium*). Plans to include local ecotype native plant materials in the establishment of a highly diverse prairie landscape will provide habitat to support native pollinators, including several species of milkweed to support the Monarch butterfly.

Identify indicator species and associated quantities this habitat will typically support:

With the restoration of highly diverse prairie habitat on these parcels, we expect to produce 200+ harvestable rooster pheasants per year. By incorporating at least 5 species of native milkweeds we expect to produce 2,000 to 6,000 Monarchs per year. Approximately 400 pairs of Grasshopper sparrows and 300 pairs of Bobolinks could potentially be found on this protected and restored prairie. With Trumpeter Swans beginning to pair up in the project area, we would expect to find up to 4 pair of swans on restored wetlands. Approximately 280 new pairs of Mallard ducks should find a home on the restored highly diverse wetland/prairie complex.

Outcomes:

Programs in prairie region:

- Key core parcels are protected for fish, game and other wildlife *Expanding the existing WMA's in Martin County is important. We need larger grassland/wetland complexes so we are targeting properties next to our current WMA's.*

How will you sustain and/or maintain this work after the Outdoor Heritage Funds are expended:

Maintaining and improving upon this work will be the responsibility of the MN DNR with support from project partners when appropriate. Local partners will continue to install additional local source native plant species to enhance habitat to support more

species, including pollinators. Local partner monitoring will assist with identifying invasive species threats and provide assistance with eradication or control if necessary.

Explain the things you will do in the future to maintain project outcomes:

| Year | Source of Funds | Step 1 | Step 2 | Step 3 |
|-----------|---------------------|------------------------|------------------------------|---------------------------|
| Volunteer | Local | Monitor to add species | Monitor for invasive species | Treat and plant as needed |
| MN DNR | Game and Fish Funds | Monitoring | Maintenance | Management |

What is the degree of timing/opportunistic urgency and why it is necessary to spend public money for this work as soon as possible:

Willing sellers hold these high priority marginal lands and are at a time where they need to sell. If we don't act when they are available, these areas of high quality habitat and restorable marginal land will be sold and possibly never be available for addition to some of the best habitat in southern Minnesota.

How does this proposal include leverage in funds or other effort to supplement any OHF appropriation:

Fox Lake Conservation League is putting in \$25,000 to help purchase the Bobcat Toolcat and attachments to help aid our local seed and weed management on upland habitats. The addition of these assets will continue to add value to our local seed harvesting and growing program to improve our local seed source. The seed harvested with this program will only enhance our future grassland restorations on LSOHC parcels.

Relationship to other funds:

- Environmental and Natural Resource Trust Fund
- Local Match

Describe the relationship of the funds:

The Fox Lake Conservation League, Inc. was successful in a 2014 LCCMR grant application of \$400,000 for the Vanderweert Parcel that now is a part of the county park system. We will continue to work with the local DNR staff to determine where we need to best use our local match dollars.

Per MS 97A.056, Subd. 24, Any state agency or organization requesting a direct appropriation from the OHF must inform the LSOHC at the time of the request for funding is made, whether the request is supplanting or is a substitution for any previous funding that was not from a legacy fund and was used for the same purpose:

This proposal does not supplant or substitute previous funding for the same purpose.

Describe the source and amount of non-OHF money spent for this work in the past:

| Appropriation Year | Source | Amount |
|--------------------|--------|--------------|
| 2014 | LCCMR | \$400,000.00 |

Activity Details

Requirements:

If funded, this proposal will meet all applicable criteria set forth in MS 97A.056 - **Yes**

Will county board or other local government approval be formally sought prior to acquisition? - **No**

The Fox Lake Conservation League and other local wildlife organizations in coordination with the Minnesota DNR and other partners, will formally keep local units of government informed on the progress of all land acquisition projects.

Is the land you plan to acquire (fee title) free of any other permanent protection - **Yes**

Will restoration and enhancement work follow best management practices including MS 84.973 Pollinator Habitat Program - **Yes**

Is the restoration and enhancement activity on permanently protected land per 97A.056, subd 13(f), tribal lands, and/or public waters per MS 103G.005, Subd. 15 - **Yes (WMA)**

Do you anticipate federal funds as a match for this program - **No**

Land Use:

Will there be planting of corn or any crop on OHF land purchased or restored in this program - **Yes**

Explain

A food plot is planned by the DNR on some of the parcels in this proposal. These food plots are viewed by DNR as important wildlife management elements in this part of the state.

Some limited duration crop planting may be required as site preparation for prairie restoration on parcels where herbicides with long (18+ month) residual carryover have been used. Conversion of old fields infested with invasive plants such as smooth brome and reed canary grass require a year of cropping with herbicides. Plantings may be needed for temporary cover or for other restoration purposes.

Are any of the crop types planted GMO treated - **Yes**

Is this land currently open for hunting and fishing - **No**

Will the land be open for hunting and fishing after completion - **Yes**

There is no variation from MN DNR hunting regulations.

Are there currently trails or roads on any of the acquisitions on the parcel list - **No**

Will new trails or roads be developed or improved as a result of the OHF acquisition - **No**

Accomplishment Timeline

| Activity | Approximate Date Completed |
|-----------------------------------|----------------------------|
| Acquire Properties | March 2020 |
| Transfer Properties to MN DNR | Spring 2020 |
| Begin Restoration | Winter 2020 |
| Complete restoration | 2022 |
| Followup/Maintenance/Weed Control | 2023 |

Budget Spreadsheet

Total Amount of Request: \$8,641,800

Budget and Cash Leverage

| Budget Name | LSOHC Request | Anticipated Leverage | Leverage Source | Total |
|----------------------------|---------------|----------------------|-----------------|-------------|
| Personnel | \$213,400 | \$0 | | \$213,400 |
| Contracts | \$601,500 | \$0 | | \$601,500 |
| Fee Acquisition w/ PILT | \$6,830,000 | \$0 | | \$6,830,000 |
| Fee Acquisition w/o PILT | \$0 | \$0 | | \$0 |
| Easement Acquisition | \$0 | \$0 | | \$0 |
| Easement Stewardship | \$0 | \$0 | | \$0 |
| Travel | \$27,000 | \$0 | | \$27,000 |
| Professional Services | \$140,000 | \$0 | | \$140,000 |
| Direct Support Services | \$19,400 | \$0 | | \$19,400 |
| DNR Land Acquisition Costs | \$120,000 | \$0 | | \$120,000 |
| Capital Equipment | \$74,500 | \$25,000 | FLCL | \$99,500 |
| Other Equipment/Tools | \$6,000 | \$0 | | \$6,000 |
| Supplies/Materials | \$0 | \$0 | | \$0 |
| DNR IDP | \$610,000 | \$0 | | \$610,000 |
| Total | \$8,641,800 | \$25,000 | - | \$8,666,800 |

Personnel

| Position | FTE | Over # of years | LSOHC Request | Anticipated Leverage | Leverage Source | Total |
|---|------|-----------------|---------------|----------------------|-----------------|-----------|
| DU Restoration Biologists and Engineers | 0.33 | 3.00 | \$113,400 | \$0 | | \$113,400 |
| Grant Administration | 0.25 | 4.00 | \$50,000 | \$0 | | \$50,000 |
| MN Representative | 0.20 | 2.00 | \$50,000 | \$0 | | \$50,000 |
| Total | 0.78 | 9.00 | \$213,400 | \$0 | - | \$213,400 |

Capital Equipment

| Item Name | LSOHC Request | Anticipated Leverage | Leverage Source | Total |
|-------------------------|---------------|----------------------|-----------------|----------|
| Bobcat Toolcat w/Bucket | \$38,500 | \$25,000 | FLCL | \$63,500 |
| Mower/Brushcat | \$6,600 | \$0 | | \$6,600 |
| Soil Conditioner | \$9,200 | \$0 | | \$9,200 |
| Seeder | \$6,900 | \$0 | | \$6,900 |
| Utility Trailer | \$8,000 | \$0 | | \$8,000 |
| Rotary Tiller | \$5,300 | \$0 | | \$5,300 |
| Total | \$74,500 | \$25,000 | - | \$99,500 |

Budget and Cash Leverage by Partnership

| Budget Name | Partnership | LSOHC Request | Anticipated Leverage | Leverage Source | Total |
|----------------------------|-----------------|---------------|----------------------|-----------------|-------------|
| Personnel | Ducks Unlimited | \$113,400 | \$0 | | \$113,400 |
| Contracts | Ducks Unlimited | \$571,500 | \$0 | | \$571,500 |
| Fee Acquisition w/ PILT | Ducks Unlimited | \$0 | \$0 | | \$0 |
| Fee Acquisition w/o PILT | Ducks Unlimited | \$0 | \$0 | | \$0 |
| Easement Acquisition | Ducks Unlimited | \$0 | \$0 | | \$0 |
| Easement Stewardship | Ducks Unlimited | \$0 | \$0 | | \$0 |
| Travel | Ducks Unlimited | \$20,000 | \$0 | | \$20,000 |
| Professional Services | Ducks Unlimited | \$0 | \$0 | | \$0 |
| Direct Support Services | Ducks Unlimited | \$11,400 | \$0 | | \$11,400 |
| DNR Land Acquisition Costs | Ducks Unlimited | \$0 | \$0 | | \$0 |
| Capital Equipment | Ducks Unlimited | \$0 | \$0 | | \$0 |
| Other Equipment/Tools | Ducks Unlimited | \$6,000 | \$0 | | \$6,000 |
| Supplies/Materials | Ducks Unlimited | \$0 | \$0 | | \$0 |
| DNR IDP | Ducks Unlimited | \$610,000 | \$0 | | \$610,000 |
| Total | - | \$1,332,300 | \$0 | - | \$1,332,300 |

Personnel - Ducks Unlimited

| Position | FTE | Over # of years | LSOHC Request | Anticipated Leverage | Leverage Source | Total |
|---|-------------|-----------------|------------------|----------------------|-----------------|------------------|
| DU Restoration Biologists and Engineers | 0.33 | 3.00 | \$113,400 | \$0 | | \$113,400 |
| Total | 0.33 | 3.00 | \$113,400 | \$0 | | \$113,400 |

| Budget Name | Partnership | LSOHC Request | Anticipated Leverage | Leverage Source | Total |
|----------------------------|-------------|--------------------|----------------------|-----------------|--------------------|
| Personnel | FLCL | \$50,000 | \$0 | | \$50,000 |
| Contracts | FLCL | \$30,000 | \$0 | | \$30,000 |
| Fee Acquisition w/ PILT | FLCL | \$6,830,000 | \$0 | | \$6,830,000 |
| Fee Acquisition w/o PILT | FLCL | \$0 | \$0 | | \$0 |
| Easement Acquisition | FLCL | \$0 | \$0 | | \$0 |
| Easement Stewardship | FLCL | \$0 | \$0 | | \$0 |
| Travel | FLCL | \$4,000 | \$0 | | \$4,000 |
| Professional Services | FLCL | \$0 | \$0 | | \$0 |
| Direct Support Services | FLCL | \$0 | \$0 | | \$0 |
| DNR Land Acquisition Costs | FLCL | \$120,000 | \$0 | | \$120,000 |
| Capital Equipment | FLCL | \$74,500 | \$25,000 | FLCL | \$99,500 |
| Other Equipment/Tools | FLCL | \$0 | \$0 | | \$0 |
| Supplies/Materials | FLCL | \$0 | \$0 | | \$0 |
| DNR IDP | FLCL | \$0 | \$0 | | \$0 |
| Total | - | \$7,108,500 | \$25,000 | - | \$7,133,500 |

Personnel - FLCL

| Position | FTE | Over # of years | LSOHC Request | Anticipated Leverage | Leverage Source | Total |
|----------------------|-------------|-----------------|-----------------|----------------------|-----------------|-----------------|
| Grant Administration | 0.25 | 4.00 | \$50,000 | \$0 | | \$50,000 |
| Total | 0.25 | 4.00 | \$50,000 | \$0 | | \$50,000 |

Capital Equipment - FLCL

| Item Name | LSOHC Request | Anticipated Leverage | Leverage Source | Total |
|-------------------------|-----------------|----------------------|-----------------|-----------------|
| Bobcat Toolcat w/Bucket | \$38,500 | \$25,000 | FLCL | \$63,500 |
| Mower/Brushcat | \$6,600 | \$0 | | \$6,600 |
| Soil Conditioner | \$9,200 | \$0 | | \$9,200 |
| Seeder | \$6,900 | \$0 | | \$6,900 |
| Utility Trailer | \$8,000 | \$0 | | \$8,000 |
| Rotary Tiller | \$5,300 | \$0 | | \$5,300 |
| Total | \$74,500 | \$25,000 | - | \$99,500 |

| Budget Name | Partnership | LSOHC Request | Anticipated Leverage | Leverage Source | Total |
|----------------------------|-------------|------------------|----------------------|-----------------|------------------|
| Personnel | TCF | \$50,000 | \$0 | | \$50,000 |
| Contracts | TCF | \$0 | \$0 | | \$0 |
| Fee Acquisition w/ PILT | TCF | \$0 | \$0 | | \$0 |
| Fee Acquisition w/o PILT | TCF | \$0 | \$0 | | \$0 |
| Easement Acquisition | TCF | \$0 | \$0 | | \$0 |
| Easement Stewardship | TCF | \$0 | \$0 | | \$0 |
| Travel | TCF | \$3,000 | \$0 | | \$3,000 |
| Professional Services | TCF | \$140,000 | \$0 | | \$140,000 |
| Direct Support Services | TCF | \$8,000 | \$0 | | \$8,000 |
| DNR Land Acquisition Costs | TCF | \$0 | \$0 | | \$0 |
| Capital Equipment | TCF | \$0 | \$0 | | \$0 |
| Other Equipment/Tools | TCF | \$0 | \$0 | | \$0 |
| Supplies/Materials | TCF | \$0 | \$0 | | \$0 |
| DNR IDP | TCF | \$0 | \$0 | | \$0 |
| Total | - | \$201,000 | \$0 | - | \$201,000 |

Personnel - TCF

| Position | FTE | Over # of years | LSOHC Request | Anticipated Leverage | Leverage Source | Total |
|-------------------|------|-----------------|---------------|----------------------|-----------------|----------|
| MN Representative | 0.20 | 2.00 | \$50,000 | \$0 | | \$50,000 |
| Total | 0.20 | 2.00 | \$50,000 | \$0 | - | \$50,000 |

Amount of Request: \$8,641,800
 Amount of Leverage: \$25,000
 Leverage as a percent of the Request: 0.29%
 DSS + Personnel: \$232,800
 As a % of the total request: 2.69%
 Easement Stewardship: \$0
 As a % of the Easement Acquisition: -%

How did you determine which portions of the Direct Support Services of your shared support services is direct to this program:

TCF -Our real estate support staff keeps hourly time sheets to track direct time spent on projects by grant source. We have used those past metrics to estimate the costs for this grant.
 DU - Minnesota DNR grants staff previously reviewed and approved DU accounting methodology for Direct Support Services, which are calculated and included in DU staff costs. DU Direct Support Services constitute approximately 10% of DU overall staff costs on average among DU conservation staff billing categories. DU breaks out and invoices for Direct Support Service expenses approved by DNR for reimbursement separately from Personnel expenses. In accordance with 2 CFR 200, DU uses the direct allocation method of allocating costs to programs and final cost objectives. This process of allocating costs is accomplished through the use of hourly rates. The direct cost of activities, including direct support expenses, is included in these hourly rates. The rates are comprised of costs for salaries, benefits, office space, general insurance, support staff, office supplies, and other various direct expenses incurred at the regional offices and conservation department at the home office. All costs are assigned to conservation projects (net of applicable personnel and other costs that are non-conservation related.) Hourly charges represent the amount that DU charges conservation projects per hour for each staff member working on the project. These costs represent expenses that directly support the labor cost necessary for the development of a specific water/wetlands conservation project.

Does the amount in the contract line include R/E work?

Yes, \$601,500 is budgeted for contracts as apart of the \$1,362,740 total budget for restoration work.

Does the amount in the travel line include equipment/vehicle rental? - Yes

Explain the amount in the travel line outside of traditional travel costs of mileage, food, and lodging:

None.

Describe and explain leverage source and confirmation of funds:

Fox Lake Conservation League will provide \$25,000 cash match to help purchase the Bobcat Toolcat, Trailer and Attachments. The addition of these assets will continue to add value to our local seed harvesting and growing program to improve our local seed source.

Does this proposal have the ability to be scalable? - Yes

Tell us how this project would be scaled and how administrative costs are affected, describe the “economy of scale” and how outputs would change with reduced funding, if applicable:

There are 8 parcels in our proposal and all are scalable to the amount of funding on a per parcel basis.

Output Tables

Table 1a. Acres by Resource Type

| Type | Wetlands | Prairies | Forest | Habitats | Total |
|--|----------|----------|--------|----------|-------|
| Restore | 0 | 0 | 0 | 0 | 0 |
| Protect in Fee with State PILT Liability | 98 | 987 | 0 | 0 | 1,085 |
| Protect in Fee W/O State PILT Liability | 0 | 0 | 0 | 0 | 0 |
| Protect in Easement | 0 | 0 | 0 | 0 | 0 |
| Enhance | 0 | 0 | 0 | 0 | 0 |
| Total | 98 | 987 | 0 | 0 | 1,085 |

Table 1b. How many of these Prairie acres are Native Prairie?

| Type | Native Prairie |
|--|----------------|
| Restore | 0 |
| Protect in Fee with State PILT Liability | 45 |
| Protect in Fee W/O State PILT Liability | 0 |
| Protect in Easement | 0 |
| Enhance | 0 |
| Total | 45 |

Table 2. Total Requested Funding by Resource Type

| Type | Wetlands | Prairies | Forest | Habitats | Total |
|--|-------------|-------------|--------|----------|-------------|
| Restore | \$0 | \$0 | \$0 | \$0 | \$0 |
| Protect in Fee with State PILT Liability | \$1,261,000 | \$7,380,800 | \$0 | \$0 | \$8,641,800 |
| Protect in Fee W/O State PILT Liability | \$0 | \$0 | \$0 | \$0 | \$0 |
| Protect in Easement | \$0 | \$0 | \$0 | \$0 | \$0 |
| Enhance | \$0 | \$0 | \$0 | \$0 | \$0 |
| Total | \$1,261,000 | \$7,380,800 | \$0 | \$0 | \$8,641,800 |

Table 3. Acres within each Ecological Section

| Type | Metro/Urban | Forest/Prairie | SE Forest | Prairie | Northern Forest | Total |
|--|-------------|----------------|-----------|---------|-----------------|-------|
| Restore | 0 | 0 | 0 | 0 | 0 | 0 |
| Protect in Fee with State PILT Liability | 0 | 0 | 0 | 1,085 | 0 | 1,085 |
| Protect in Fee W/O State PILT Liability | 0 | 0 | 0 | 0 | 0 | 0 |
| Protect in Easement | 0 | 0 | 0 | 0 | 0 | 0 |
| Enhance | 0 | 0 | 0 | 0 | 0 | 0 |
| Total | 0 | 0 | 0 | 1,085 | 0 | 1,085 |

Table 4. Total Requested Funding within each Ecological Section

| Type | Metro/Urban | Forest/Prairie | SE Forest | Prairie | Northern Forest | Total |
|--|-------------|----------------|-----------|-------------|-----------------|-------------|
| Restore | \$0 | \$0 | \$0 | \$0 | \$0 | \$0 |
| Protect in Fee with State PILT Liability | \$0 | \$0 | \$0 | \$8,641,800 | \$0 | \$8,641,800 |
| Protect in Fee W/O State PILT Liability | \$0 | \$0 | \$0 | \$0 | \$0 | \$0 |
| Protect in Easement | \$0 | \$0 | \$0 | \$0 | \$0 | \$0 |
| Enhance | \$0 | \$0 | \$0 | \$0 | \$0 | \$0 |
| Total | \$0 | \$0 | \$0 | \$8,641,800 | \$0 | \$8,641,800 |

Table 5. Average Cost per Acre by Resource Type

| Type | Wetlands | Prairies | Forest | Habitats |
|--|----------|----------|--------|----------|
| Restore | \$0 | \$0 | \$0 | \$0 |
| Protect in Fee with State PILT Liability | \$12,867 | \$7,478 | \$0 | \$0 |
| Protect in Fee W/O State PILT Liability | \$0 | \$0 | \$0 | \$0 |
| Protect in Easement | \$0 | \$0 | \$0 | \$0 |
| Enhance | \$0 | \$0 | \$0 | \$0 |

Table 6. Average Cost per Acre by Ecological Section

| Type | Metro/Urban | Forest/Prairie | SE Forest | Prairie | Northern Forest |
|--|-------------|----------------|-----------|---------|-----------------|
| Restore | \$0 | \$0 | \$0 | \$0 | \$0 |
| Protect in Fee with State PILT Liability | \$0 | \$0 | \$0 | \$7,965 | \$0 |
| Protect in Fee W/O State PILT Liability | \$0 | \$0 | \$0 | \$0 | \$0 |
| Protect in Easement | \$0 | \$0 | \$0 | \$0 | \$0 |
| Enhance | \$0 | \$0 | \$0 | \$0 | \$0 |

Target Lake/Stream/River Feet or Miles

0

I have read and understand Section 15 of the Constitution of the State of Minnesota, Minnesota Statute 97A.056, and the Call for Funding Request. I certify I am authorized to submit this proposal and to the best of my knowledge the information provided is true and accurate.

Parcel List

Explain the process used to select, rank and prioritize the parcels:

The partnership has worked with the MN DNR staff to be highly selective in choosing these parcels. Targeted parcels were chosen for habitat management needs that are only possible through acquisition.

Section 1 - Restore / Enhance Parcel List

No parcels with an activity type restore or enhance.

Section 2 - Protect Parcel List

Martin

| Name | TRDS | Acres | Est Cost | Existing Protection? | Hunting? | Fishing? |
|------------------------------|----------|-------|-------------|----------------------|----------|----------------|
| Caron WMA Parcel #13A | 10333225 | 135 | \$1,050,000 | No | Full | Not Applicable |
| Caron WMA Parcel #13B | 10333226 | 209 | \$1,600,000 | No | Full | Not Applicable |
| Caron WMA Parcel #14 | 10333224 | 80 | \$580,000 | No | Full | Not Applicable |
| Caron WMA Parcel #15 | 10333225 | 50 | \$335,000 | No | Full | Not Applicable |
| Caron WMA Parcel #21A & #21B | 10333223 | 110 | \$775,000 | No | Full | Not Applicable |
| Caron WMA Parcel #22 | 10333222 | 80 | \$590,000 | No | Full | Not Applicable |
| Gruven WMA Parcel #6 | 10330236 | 181 | \$750,000 | No | Full | Not Applicable |

Section 2a - Protect Parcel with Bldgs

Martin

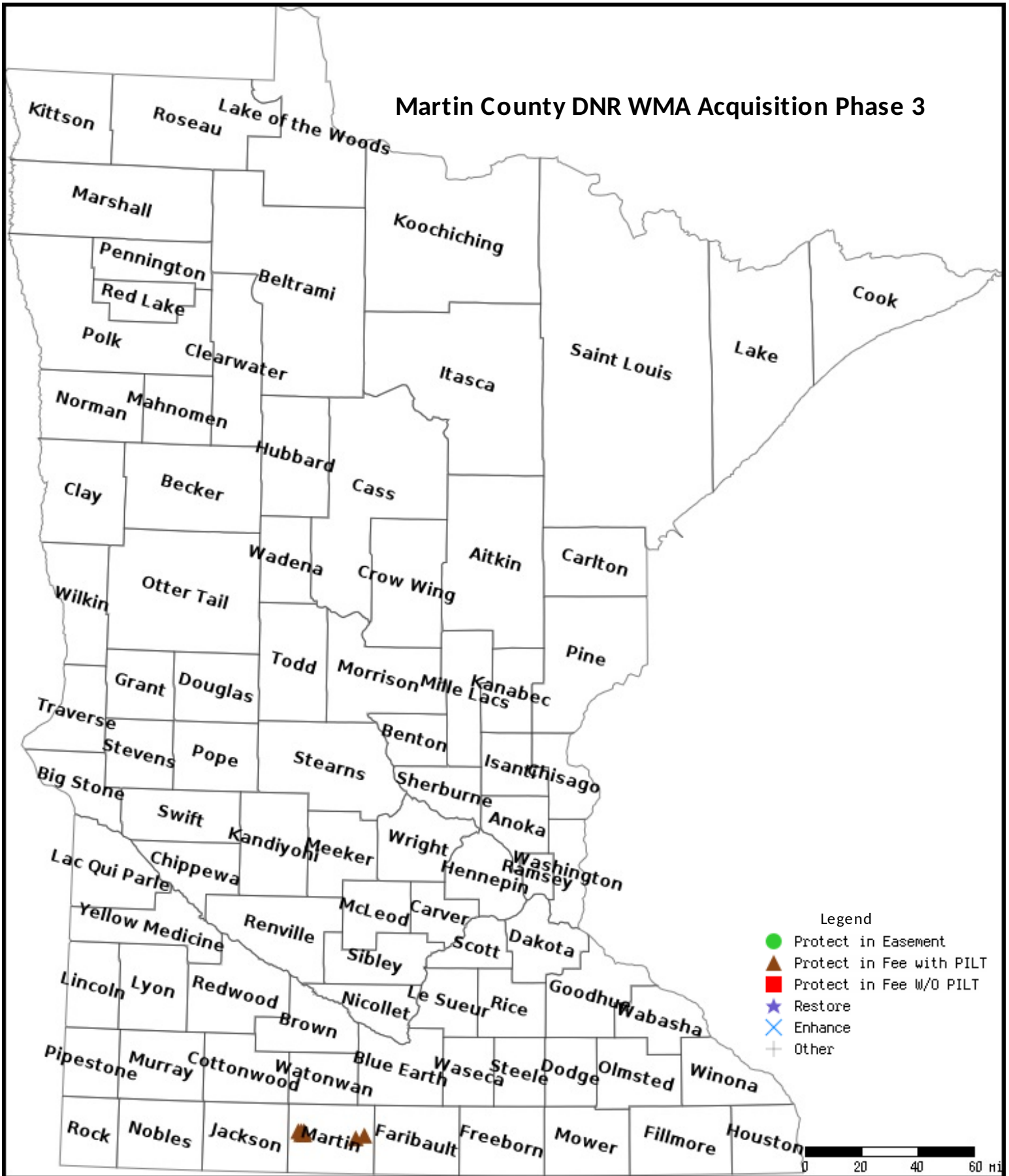
| Name | TRDS | Acres | Est Cost | # Bldgs? | Bldg Improve Desc | Value of Bldg | Disposition of Improvements |
|-----------------------------|----------|-------|-------------|----------|-------------------------|---------------|-----------------------------|
| Center Creek WMA Parcel #15 | 10329228 | 240 | \$1,150,000 | 6 | Sheds and grain storage | \$1,300 | Demolish |

Section 3 - Other Parcel Activity

No parcels with an other activity type.

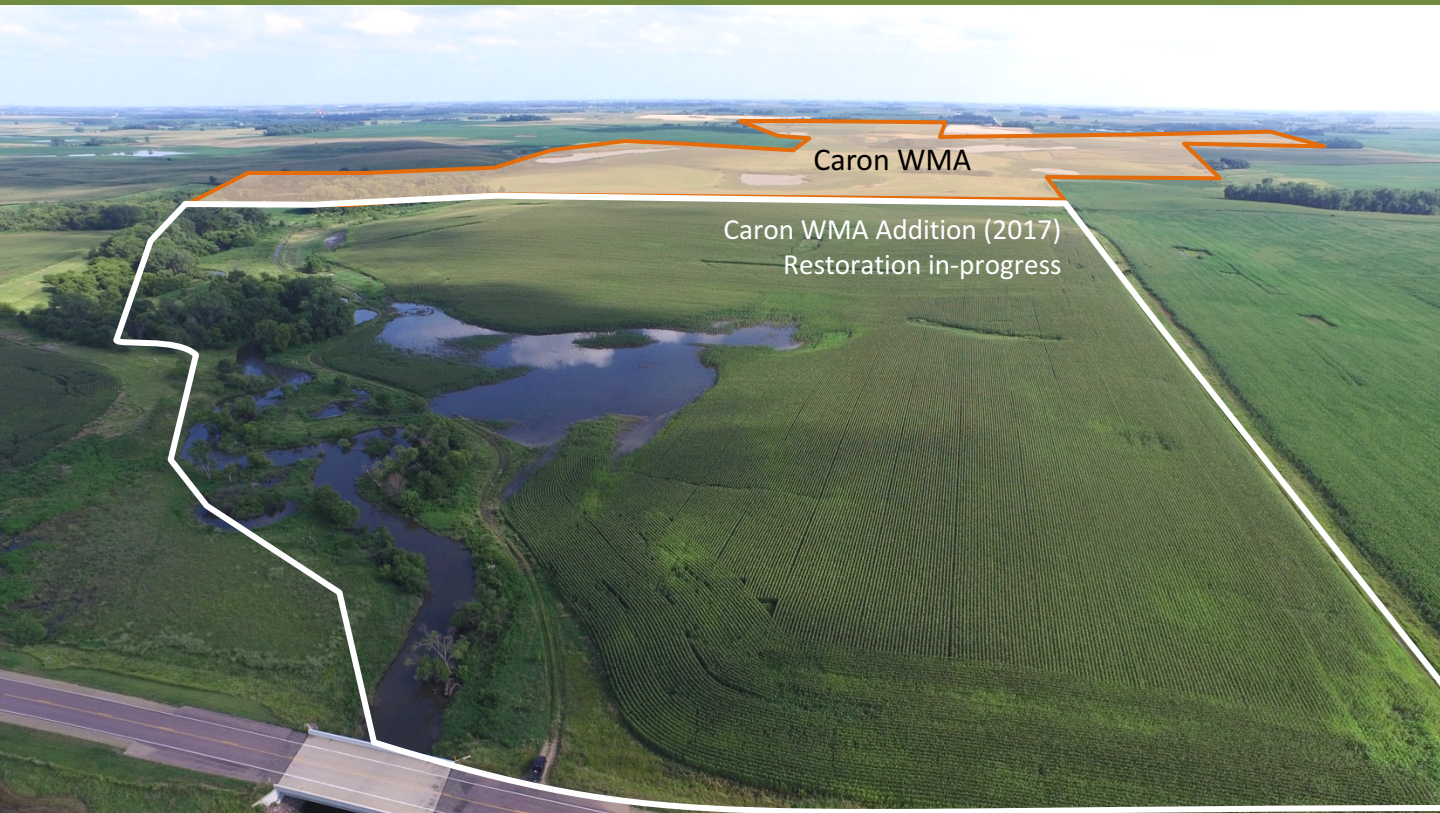
Parcel Map

Martin County DNR WMA Acquisition Phase 3



Data Generated From Parcel List

Martin County Wildlife Areas Phase III



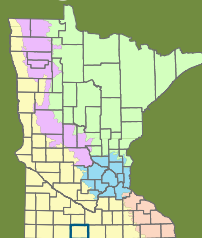
This program continues the successful partnership among local and statewide organizations to protect and restore strategic prairie and wetland habitat in areas adjacent to existing DNR Wildlife Management Areas in Martin County. Building on previous investments by local conservation clubs and state agencies, the partners will protect and restore habitat in the places that matter most for wildlife in Martin County.

Acquisition is the most resource-intensive way to protect habitat, so partners are strategic to only acquire areas that will result in the most habitat and public access benefits. Conservation complexes were selected in Martin County by conservation partners and local community members for their existing and potential conservation value.

To continue the strong local support for conservation projects in Martin County, partners will communicate with local elected officials to ensure that permanent protection aligns with the conservation goals of the community.

This partnership will use the real estate expertise of The Conservation Fund, wetland and grassland restoration expertise of Ducks Unlimited, and the local efforts of the Fox Lake Conservation League to ensure success of this conservation effort.

Program Area



Partners

Fox Lake Conservation League
Ducks Unlimited
The Conservation Fund

FY19 Funding Requested

\$8.64 million

Previous OHF Funding

Phase I – acquisition completed
Phase II – available 2018

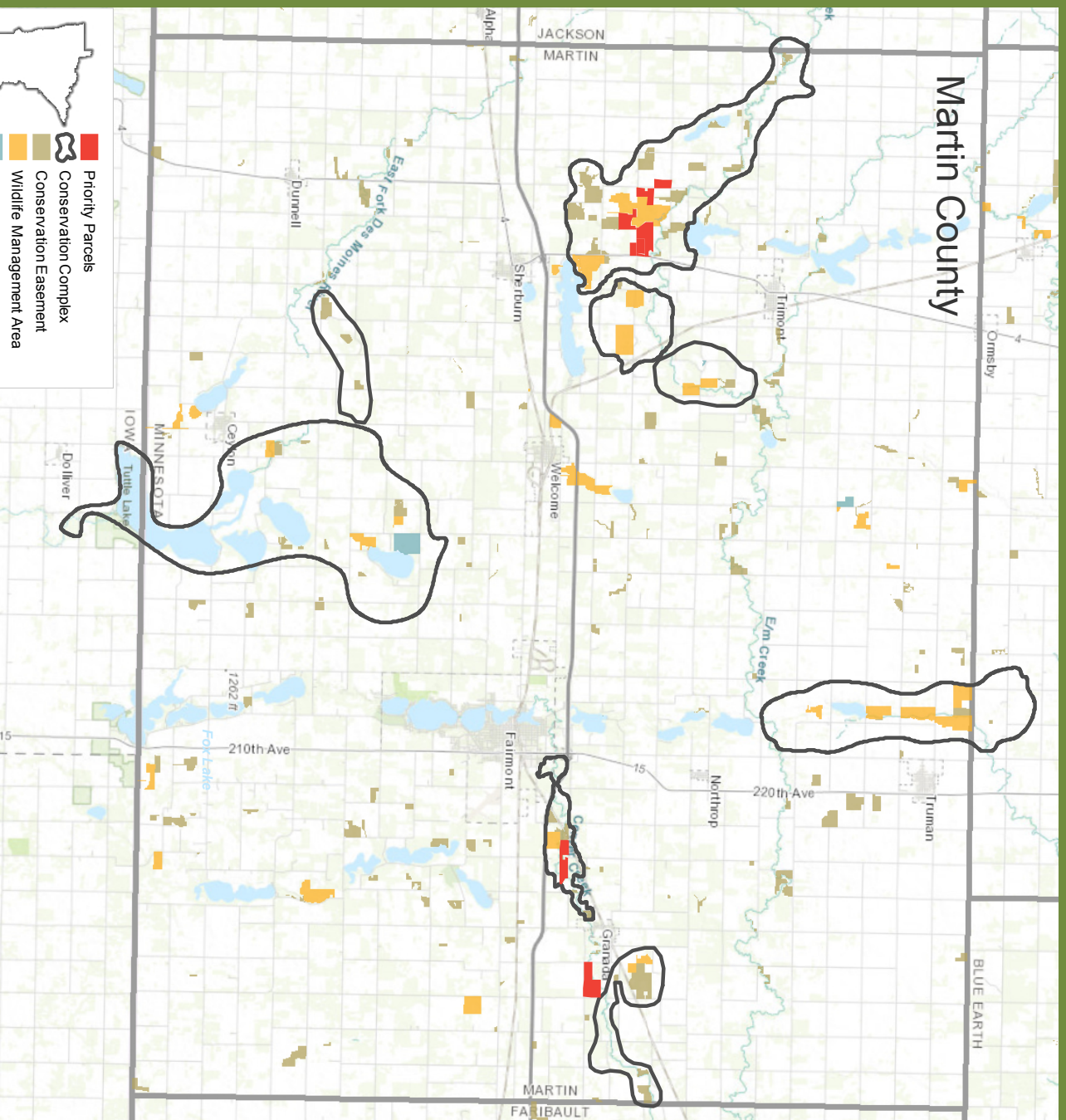
Program Type

Fee Title Acquisition with PILT
Restoration

Program Outcomes

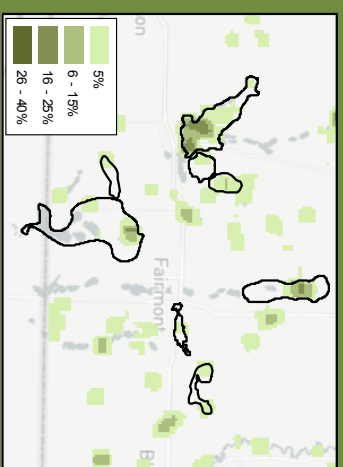
- Increased connectivity of existing WMAs and conservation easements
- Restoration of 100+ wetland acres
- Builds on previous habitat investments

Martin County

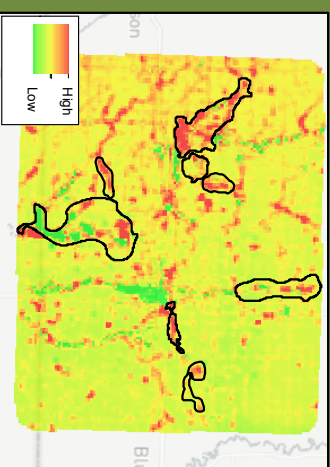


Created by Emilie Nelson, The Conservation Fund
 Date: 5/29/2018
 Data collected from ESRI, MN Geo WMS service

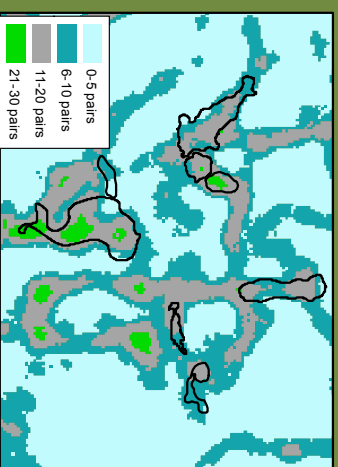
Percent Landscape in Grassland



Bobolink Nesting Suitability per 40 acres



Waterfowl Pairs per Sq. Mile





MARTIN COUNTY CONSERVATION CLUB INC
1234 South State St
Fairmont MN 56031

May 30, 2018

To: The Fox Lake Conservation League and Partners

RE: LSOHC Proposal to add acres to DNR WMAs in Martin County

The Martin County Conservation Club is happy to support your project for the protection of additional wildlife habitat and the restoration of wetland and prairie habitat adjacent to and near existing WMAs. We need more projects like this one that sets land aside to provide multiple benefits.

The work proposed on these parcels will add to the existing nesting habitat along the restoration of a significant amount of wetland and open water habitat. This land is important in the management of waterfowl, species of small game, and many non-game wildlife species, including pollinators. It will allow the addition of native food plants in critical areas for the deer, pheasants and the many other species that use the existing wildlife habitat.

The Martin County Conservation Club will assist with the Fox Lake Conservation League efforts and other partners to provide support as needed in restoration of these additional acres of the much needed wildlife habitat. This area will add to the quality of hunting and other recreational activities that it will support for the future.

We look forward to working with you on this important project to protect and restore high quality habitat while getting the bonus of providing water quality and quantity benefits and helping to reduce flooding downstream within the watershed.

Sincerely,

Bruce Moore, President
Martin County Conservation Club, Inc.



MINNESOTA
SOIL and WATER CONSERVATION DISTRICTS

May 10, 2018

To: Fox Lake Conservation League and Partners

RE: Lessard Sams Outdoor Heritage Council grant application

The Martin Soil and Water Conservation District supports your efforts to protect and restore native prairie, and restore wildlife habitat and restore wetlands. We need more projects that provide multiple uses within our watersheds.

The Martin County Water Plan indicates the need for providing more habitat and outdoor recreational opportunities for the public. Your project will also benefit water quality and make improvements to water quantity management within the watershed. This project will add to nesting habitat as well as adding breeding habitat for waterfowl. Besides waterfowl, small game, and deer, many non-game wildlife species, including pollinators will benefit from this project.

Martin SWCD and volunteers will assist the many partners to provide support with the incorporation of additional local source native prairie plant species to project areas. Planting forbs that provide continuous bloom throughout the growing season will benefit all pollinators.

We look forward to assisting you with your project to not only restore habitat and protect native prairie and wetland habitat, but to protect the watershed by providing water quality improvement and water quantity management.

Sincerely,

A handwritten signature in blue ink that reads "Judy Beckman".

Judy Beckman, Chair

Martin Soil and Water Conservation District