

# Lessard-Sams Outdoor Heritage Council

## Fiscal Year 2020 / ML 2019 Request for Funding



**Date:** June 01, 2018

**Program or Project Title:** Protecting Aquatic Habitats Through Watercraft Cleaning Technology and Community Outreach

**Funds Requested:** \$7,969,100

**Manager's Name:** Dane Huinker  
**Title:** Conservation Program Manager  
**Organization:** Wildlife Forever  
**Address:** 5350 HWY 61 Suite 7  
**City:** White Bear Lake, MN 55110  
**Office Number:** 763-253-0222  
**Mobile Number:** 563-379-8367  
**Fax Number:** 763-560-9961  
**Email:** dhuinker@wildlife-forever.org  
**Website:** wildlife-forever.org

**County Locations:** Not Listed

**Regions in which work will take place:**

- Metro / Urban

**Activity types:**

- Protect

**Priority resources addressed by activity:**

- Wetlands
- Habitat

### Abstract:

Wildlife Forever's project goal is to protect aquatic habitat for fish, game, and wildlife by reducing the spread of aquatic invasive species (AIS). The project will be the first comprehensive regional approach using tools, technology, and education to empower best management practices of clean, drain, dry, and dispose of bait by boaters. By preventing the spread of AIS this project directly protects over 300,000 acres of lakes and rivers in the Metro Area and destination lakes throughout the State.

### Design and scope of work:

To do so, Wildlife Forever (WF) proposes three main actions:

1. Install 125 waterless cleaning stations for day-boater use that incorporate hand tools for physical AIS removal. Stations use internet connected technologies for maintenance, activity and functionality. WF and county Partners will prioritize installation at launches on AIS infested waters and other priority waters in the Metro.
2. We will incorporate dynamic mapping technologies to direct boaters at high risk for transporting zebra mussels and other AIS to nearby decontamination stations.
3. Through an enhanced educational strategy in the Metro Area, we will implement a rigorous community engagement and outreach program to promote consistent clean, drain, dry, and dispose messaging and station use. The Internet based technology (IoT) enabled, waterless cleaning stations, bridge the gap of economics, providing education, and on-site tools with best-in-class AIS prevention techniques and technologies. With annual operations, maintenance, and ownership of approximately \$5,000/year, the stations provide a low-cost alternative as compared to staffed decontamination stations (over \$20,000/year) or full-time paid inspectors. These stations combine self-service cleaning resources for boaters to clean, drain, and dry their boats during the day or at night:

- Clean: marine brush, vacuum, reach tool
- Drain: plug wrench (to remove boat plug)
- Dry: blower
- Low light conditions: marine LED lights

Additionally, WF will employ educational tools to direct boaters at high risk for transporting zebra mussels to local decontamination resources by implementing a live, automatic mapping tool. Finally, WF will use a community based social marketing educational approach to promote station use and support community outreach priorities. This model will provide a centralized clearing house for educational and outreach resources. Additionally significant efforts will be placed on expanding awareness of “Clean, Drain, and Dry” messages and connecting this local and state supported campaign to the use of the cleaning infrastructure using local businesses and partners.

Each behavior taken will be a direct indication of actions taken to protect aquatic habitat in the Metro and statewide. We will evaluate the success by collecting and correlating two key variables: education of boaters and data collected through the use of IOT technology incorporated with each station. Thereby, we can evaluate the impacts of our educational efforts by correlating the adoption of BMPs to education/outreach over the lifecycle of the project. To evaluate success of our dynamic mapping tool, we will track changes in use rates of decontamination stations over time.

### Which sections of the Minnesota Statewide Conservation and Preservation Plan are applicable to this project:

- H5 Restore land, wetlands and wetland-associated watersheds
- H6 Protect and restore critical in-water habitat of lakes and streams

### Which other plans are addressed in this proposal:

- Minnesota DNR Strategic Conservation Agenda
- State Comprehensive Outdoor Recreation Plan

### Describe how your program will advance the indicators identified in the plans selected:

Goal 1 in “Minnesota DNR’s Strategic Conservation Agenda” is to ensure “Minnesota’s waters, natural lands, and diverse fish and wildlife habitats are conserved and enhanced.” A key action to do so is identified to, “prevent and curb the spread of invasive species,” which our proposal directly addresses through infrastructure and education to empower AIS prevention best management practices.

In “Minnesota’s State Comprehensive Outdoor Recreation Plan” one goal is to “Take Care of What We Have” by “Maintain(ing) the quality of natural resources.” The Plan identifies one strategy as “preserve existing high-quality natural areas and water resources.” We seek to protect water resources by, as suggested in the plan, “prevent(ing) the introduction and spread of invasive species” by “design(ing) and manage to help visitors prevent the unintended spread of invasive species.” Again our proposal addresses this indicator through education and infrastructure.

### Which LSOHC section priorities are addressed in this proposal:

#### Metro / Urban:

- Protect from long-term or permanent endangerment from invasive species

### Describe how your program will produce and demonstrate a significant and permanent conservation legacy and/or outcomes for fish, game, and wildlife as indicated in the LSOHC priorities:

A key Priority Action for Metropolitan Urbanizing Area is to protect from long-term or permanent endangerment from invasive species. As demonstrated by anti-littering campaigns, recycling rates, etc., when combining the right tools with the right messaging, cultural change can be achieved. To permanently protect Minnesota’s water resources, we need to fundamentally change the behavior of recreational boaters and increase adoption of AIS spread prevention best management practices. To date, AIS prevention efforts have been piecemeal and not taken a regional approach. By fundamentally changing boater behavior, we will change boating culture and instill a conservation legacy which protects fish, game, and wildlife.

### Describe how the proposal uses science-based targeting that leverages or expands corridors and complexes, reduces fragmentation or protects areas identified in the MN County Biological Survey:

Our project will allow for a prioritization of installation on boat access sites based on safeguarding lakes and rivers with key habitats. As the cleaning stations can be used by boaters to clean in and clean out, the technology safeguards the transportation of AIS into and out of a lake. Thus, we will use MN County Biological Surveys to use science-based targeting for protecting areas of greatest

conservation need.

## How does the proposal address habitats that have significant value for wildlife species of greatest conservation need, and/or threatened or endangered species, and list targeted species:

Invasive species are one of the key factors in the listing of threatened and endangered species. With over 300,000 acres of lakes and rivers in the Metro Area in need of protection from AIS, we will work with local partners to identify and prioritize sites for cleaning station installation. These sites will be selected based upon the presence/absence of AIS, the risk posed by the AIS present, whether the waterbody is impaired for biological indices, the presence/absence of species of greatest conservation need and/or threatened or endangered species, and if it is an identified site of importance by the Minnesota County Biological Survey. This allows for local natural resource managers to integrate our project with their conservation projects and align state and local AIS and conservation priorities.

## Identify indicator species and associated quantities this habitat will typically support:

The proposed project aims to protect over 300,000 acres of lakes and rivers in the Metro Area. Protecting these waters has a multiplying effect by reducing the risk of spreading AIS to destination lakes in outer Minnesota and beyond. The Minnesota DNR reports that, "A northern Minnesota lake such as Vermillion in St. Louis County produces about 8 pounds of game fish per acre, while a southern Minnesota lake such as Tetonka in Le Sueur County produces about 40 pounds of game fish per acre." AIS have a profound impact on reducing the prevalence of indicator species, such as walleye. As evident in Mille Lacs, walleye biomass has been reduced by zebra mussels growth. Currently the ratio of biomass of walleye to zebra mussels is 1:1,000. This change in the ecological makeup of a lake infested with AIS will directly reduce the game fish productivity per acre as the majority of the base of the food chain supports these introduced invasive species.

## Outcomes:

### Programs in metropolitan urbanizing region:

- Improved aquatic habitat indicators *We will evaluate the success by collecting and correlating two key variables: education of boaters and data collected through the use of IOT technology incorporated with each station. Thereby, we can evaluate the impacts of our educational efforts by correlating the adoption of BMPs to education/outreach over the lifecycle of the project. To evaluate success of our dynamic mapping tool, we will track changes in use rates of decontamination stations over time.*

## How will you sustain and/or maintain this work after the Outdoor Heritage Funds are expended:

We will build long standing infrastructure which empowers boaters to reduce the spread of AIS. To ensure the long-term success of the project, the sites selected will need local sponsors (city, counties, etc.) which will agree to maintain the infrastructure upon completion of the project. Our project will allow for a prioritization of sites with key stakeholder input based upon biological need and an ability for the partners to support the project long-term. The project will cover the cost of installation and maintenance for up to four years after which time stations will be given to supporting partner. During the first four years the funds will cover insurance, replacement of tools, and the software interface platform for monitoring station and tool use.

## Explain the things you will do in the future to maintain project outcomes:

Not Listed

## What is the degree of timing/opportunistic urgency and why it is necessary to spend public money for this work as soon as possible:

As indicated by research from Minnesota Sea Grant, providing the tools to boaters is key in changing boater behavior and decreasing the spread of AIS. Minnesota is the third highest state for boat ownership with 850,000 registered watercrafts. The Metro Area is a population epicenter of nearly 3 million people. The close proximity of a large boating population and urban/suburban lakes and rivers resources increases the value of Metro Area waters. However, with high usage comes an increase in risk of importing and exporting AIS, as indicated by the 290 AIS infested waters in the Metro. Furthermore 2,500 waterbodies in the Metro and Urbanizing Area have been identified by the Minnesota Pollution Control Agency as having impairments affecting aquatic life or aquatic recreation. An introduction of additional AIS to these waterbodies, such as Starry Stonewort, would further impair these already fragile ecosystems.

## How does this proposal include leverage in funds or other effort to supplement any OHF appropriation:

The project is an expansion upon the successes of Wildlife Forever's Lessard-Sams Outdoor Heritage Council and the Initiative Foundation supported pilot. We are seeking funds for outer Minnesota to implement similar strategies in the Northeastern Region of the State through LCCMR and the Great Lakes Protection Fund. In addition, we seek to leverage funding from local partners with an invested interest in boat landing infrastructure.

## Relationship to other funds:

- Not Listed

## Describe the relationship of the funds:

Not Listed

Per MS 97A.056, Subd. 24, Any state agency or organization requesting a direct appropriation from the OHF must inform the LSOHC at the time of the request for funding is made, whether the request is supplanting or is a substitution for any previous funding that was not from a legacy fund and was used for the same purpose:

This project has not received any previous funding.

## Describe the source and amount of non-OHF money spent for this work in the past:

Appropriation Year	Source	Amount
N/A	N/A	N/A

## Activity Details

### Requirements:

If funded, this proposal will meet all applicable criteria set forth in MS 97A.056 - **Yes**

Do you anticipate federal funds as a match for this program - **No**

### Land Use:

Will there be planting of corn or any crop on OHF land purchased or restored in this program - **No**

## Accomplishment Timeline

Activity	Approximate Date Completed
Site Identification	July 19 - June 20
Installation of Cleaning Stations	July 20 - Sept. 21
Collecting use data via IoT platform	June 20 - May 22
Implement Community Outreach and Education	July 19 - Oct. 22
Identified local partners with decontamination units	Sept. 19 - May 20
Creation of online mapping/education platform	July 19 - Aug. 19
Installation of GPS technology on decontamination units	April 20 - Oct. 22
Evaluation and Reporting	June 22

# Budget Spreadsheet

**Total Amount of Request: \$7,969,100**

## Budget and Cash Leverage

Budget Name	LSOHC Request	Anticipated Leverage	Leverage Source	Total
Personnel	\$240,000	\$0		\$240,000
Contracts	\$0	\$0		\$0
Fee Acquisition w/ PILT	\$0	\$0		\$0
Fee Acquisition w/o PILT	\$0	\$0		\$0
Easement Acquisition	\$0	\$0		\$0
Easement Stewardship	\$0	\$0		\$0
Travel	\$0	\$0		\$0
Professional Services	\$0	\$0		\$0
Direct Support Services	\$590,300	\$655,200	WF Approved Rate 16.88%	\$1,245,500
DNR Land Acquisition Costs	\$0	\$0		\$0
Capital Equipment	\$7,138,800	\$865,100	In-kind, In-kind, In-kind, In-kind, In-kind, In-kind, In-kind	\$8,003,900
Other Equipment/Tools	\$0	\$0		\$0
Supplies/Materials	\$0	\$0		\$0
DNR IDP	\$0	\$0		\$0
<b>Total</b>	<b>\$7,969,100</b>	<b>\$1,520,300</b>		<b>\$9,489,400</b>

## Personnel

Position	FTE	Over # of years	LSOHC Request	Anticipated Leverage	Leverage Source	Total
Dane Huinker Program Manager	100.00	3.00	\$150,000	\$0		\$150,000
Chris Johnson Program Support - Accountant	30.00	3.00	\$90,000	\$0		\$90,000
<b>Total</b>	<b>130.00</b>	<b>6.00</b>	<b>\$240,000</b>	<b>\$0</b>		<b>\$240,000</b>

## Capital Equipment

Item Name	LSOHC Request	Anticipated Leverage	Leverage Source	Total
Waterless Boat Cleaning Stations (125 locations @ \$22,500 each)	\$2,812,500	\$0		\$2,812,500
Station Delivery (\$750/station)	\$93,800	\$0		\$93,800
Equipment Installation (\$750/station)	\$93,800	\$0		\$93,800
Electrical hookup/concrete pad and/or solarization (\$7,500/station)	\$937,500	\$0		\$937,500
Insurance (\$300/station/year)	\$112,500	\$0		\$112,500
Software Platform Setup & Settings (\$1,000/station)	\$125,000	\$0		\$125,000
Software Platform & Data Service (\$750/station)	\$93,800	\$0		\$93,800
Graphic Design Materials (\$650/station)	\$81,300	\$0		\$81,300
Winter Cover - Grey Vinyl (\$975/station)	\$121,900	\$0		\$121,900
Base Mounting Frame and Electric Box Kit (\$200/station)	\$25,000	\$0		\$25,000
Monitoring/tracking technology for roving decontamination stations (12 in total)	\$12,000	\$0		\$12,000
5 year lease decontamination mapping online tracking tool	\$12,500	\$0		\$12,500
Highway Awareness Signs (60 locations per year x \$5,000/each x 3 yrs)	\$900,000	\$135,000	In-kind	\$1,035,000
Television Public Service Announcements (Production, Distribution (5 video PSAs 5 @ \$20,000)	\$100,000	\$15,000	In-kind	\$115,000
Airtime on community networks and Broadcast Stations (9@ \$24,000/yr = \$216,000 @ 3 yr = \$648,000)	\$648,000	\$97,200	In-kind	\$745,200
Regional Social Media/Community Awareness (\$50k @ 3yr)	\$150,000	\$22,500	In-kind	\$172,500
Community Outreach Materials & Prompts & handouts (posters, coasters, fliers, decals...more)	\$350,000	\$525,000	In-kind	\$875,000
Messaging in Local printed publications/newspaper (300 placements @ \$500 each)	\$150,000	\$22,500	In-kind	\$172,500
Local Radio Broadcast Public Service Announcements (\$15,200 @ 7 stations x 3 yr)	\$319,200	\$47,900	In-kind	\$367,100
<b>Total</b>	<b>\$7,138,800</b>	<b>\$865,100</b>		<b>\$8,003,900</b>

Amount of Request: \$7,969,100

Amount of Leverage: \$1,520,300

Leverage as a percent of the Request: 19.08%

DSS + Personnel: \$830,300

As a % of the total request: 10.42%  
Easement Stewardship: \$0  
As a % of the Easement Acquisition: -%

**How did you determine which portions of the Direct Support Services of your shared support services is direct to this program:**

Wildlife Forever's indirect cost rate has been established as 16.88% by the USDA Forest Service.

**Describe and explain leverage source and confirmation of funds:**

Leveraged resources will be in-kind contributions from media and partner organizations.

**Does this proposal have the ability to be scalable? - Yes**

**Tell us how this project would be scaled and how administrative costs are affected, describe the "economy of scale" and how outputs would change with reduced funding, if applicable:**

This project can be scaled to meet other financial considerations.

## Output Tables

**Table 1a. Acres by Resource Type**

Type	Wetlands	Prairies	Forest	Habitats	Total
Restore	0	0	0	0	0
Protect in Fee with State PILT Liability	0	0	0	0	0
Protect in Fee W/O State PILT Liability	0	0	0	0	0
Protect in Easement	0	0	0	0	0
Enhance	0	0	0	0	0
Total	0	0	0	0	0

**Table 2. Total Requested Funding by Resource Type**

Type	Wetlands	Prairies	Forest	Habitats	Total
Restore	\$0	\$0	\$0	\$0	\$0
Protect in Fee with State PILT Liability	\$0	\$0	\$0	\$0	\$0
Protect in Fee W/O State PILT Liability	\$0	\$0	\$0	\$0	\$0
Protect in Easement	\$0	\$0	\$0	\$0	\$0
Enhance	\$0	\$0	\$0	\$0	\$0
Total	\$0	\$0	\$0	\$0	\$0

**Table 3. Acres within each Ecological Section**

Type	Metro/Urban	Forest/Prairie	SE Forest	Prairie	Northern Forest	Total
Restore	0	0	0	0	0	0
Protect in Fee with State PILT Liability	0	0	0	0	0	0
Protect in Fee W/O State PILT Liability	0	0	0	0	0	0
Protect in Easement	0	0	0	0	0	0
Enhance	0	0	0	0	0	0
Total	0	0	0	0	0	0

**Table 4. Total Requested Funding within each Ecological Section**

Type	Metro/Urban	Forest/Prairie	SE Forest	Prairie	Northern Forest	Total
Restore	\$0	\$0	\$0	\$0	\$0	\$0
Protect in Fee with State PILT Liability	\$0	\$0	\$0	\$0	\$0	\$0
Protect in Fee W/O State PILT Liability	\$0	\$0	\$0	\$0	\$0	\$0
Protect in Easement	\$0	\$0	\$0	\$0	\$0	\$0
Enhance	\$0	\$0	\$0	\$0	\$0	\$0
Total	\$0	\$0	\$0	\$0	\$0	\$0

**Table 5. Average Cost per Acre by Resource Type**

Type	Wetlands	Prairies	Forest	Habitats
Restore	\$0	\$0	\$0	\$0
Protect in Fee with State PILT Liability	\$0	\$0	\$0	\$0
Protect in Fee W/O State PILT Liability	\$0	\$0	\$0	\$0
Protect in Easement	\$0	\$0	\$0	\$0
Enhance	\$0	\$0	\$0	\$0

**Table 6. Average Cost per Acre by Ecological Section**

Type	Metro/Urban	Forest/Prairie	SE Forest	Prairie	Northern Forest
Restore	\$0	\$0	\$0	\$0	\$0
Protect in Fee with State PILT Liability	\$0	\$0	\$0	\$0	\$0
Protect in Fee W/O State PILT Liability	\$0	\$0	\$0	\$0	\$0
Protect in Easement	\$0	\$0	\$0	\$0	\$0
Enhance	\$0	\$0	\$0	\$0	\$0

**Target Lake/Stream/River Feet or Miles**

0

I have read and understand Section 15 of the Constitution of the State of Minnesota, Minnesota Statute 97A.056, and the Call for Funding Request. I certify I am authorized to submit this proposal and to the best of my knowledge the information provided is true and accurate.



# Parcel List

## Explain the process used to select, rank and prioritize the parcels:

With over 300,000 acres of lakes and rivers in the Metro Area in need of protection from AIS, we will work with local partners to identify and prioritize sites for cleaning station installation. These sites will be selected based upon the presence/absence of AIS, the risk posed by the AIS present, whether the waterbody is impaired for biological indices, the presence/absence of species of greatest conservation need and/or threatened or endangered species, and if it is an identified site of importance by the Minnesota County Biological Survey. This allows for local natural resource managers to integrate our project with their conservation projects and align state and local AIS and conservation priorities.

## Section 1 - Restore / Enhance Parcel List

No parcels with an activity type restore or enhance.

## Section 2 - Protect Parcel List

No parcels with an activity type protect.

## Section 2a - Protect Parcel with Bldgs

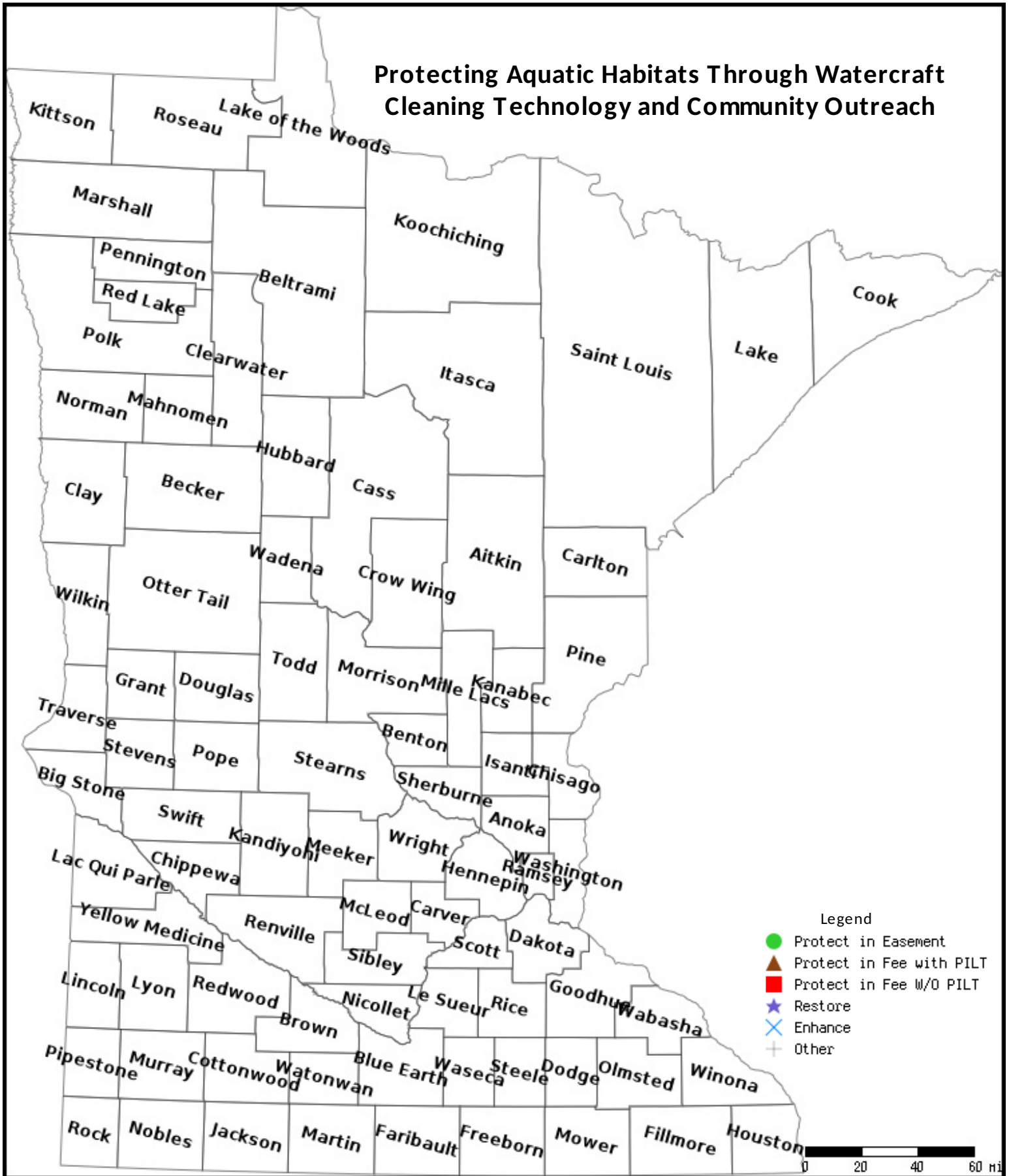
No parcels with an activity type protect and has buildings.

## Section 3 - Other Parcel Activity

No parcels with an other activity type.

# Parcel Map

## Protecting Aquatic Habitats Through Watercraft Cleaning Technology and Community Outreach



Data Generated From Parcel List

# Protecting Aquatic Habitats Through Watercraft Cleaning Technology and Community Outreach



## Who:

Wildlife Forever in partnership with Metro Counties and local government units, aim to protect aquatic habitat for fish, game, and wildlife by reducing the spread and impacts of aquatic invasive species (AIS).

## What:

The project will be the first comprehensive regional approach using tools, technology, and education to empower the best management practices of clean, drain, dry, and disposing of bait by boaters and anglers.

- Install 125 waterless cleaning stations for day-boater use that incorporate hand tools for self-service, physical AIS removal.
- We will incorporate dynamic mapping technologies to direct boaters at high risk for transporting zebra mussels and other AIS to nearby decontamination stations.
- Through an enhanced education and outreach strategy, we will implement a rigorous, metro wide community based outreach program to promote consistent clean, drain, dry, and dispose actions and station use.

## Where:

Sites will be selected based upon the presence/absence of AIS, habitat threats posed by AIS present, the presence/absence of species of

greatest conservation need and/or threatened or endangered species, and if it is an identified site of importance by the Minnesota County Biological Survey. This allows for local natural resource managers to integrate the project with current conservation projects aligning state and local AIS priorities.

## Why:

Invasive species are one of the key factors in the listing of threatened and endangered species. AIS have a profound impact on reducing the prevalence of indicator species, such as walleye. As evident in Mille Lacs, walleye biomass has been reduced by zebra mussels growth. Currently the ratio of biomass of walleye to zebra mussels is 1:1,000. This change in the ecological makeup of a lake infested with AIS will directly reduce the game fish productivity per acre as the majority of the base of the food chain supports introduced invasive species such as zebra mussels and spiny water flea.

Boats and trailers are a major vector for AIS transport. The Metro Area is a population epicenter of nearly 3 million people. The proximity of a large boating population to 300,000 acres of metro lakes and rivers, increases the risk of spread. Furthermore 2,500 locations in the Metro and Urbanized Area have been identified by the Minnesota Pollution

Control Agency as having biological impairments affecting aquatic life, habitat and aquatic recreation.

Within an hour drive from the Metro (see map below), there are an additional 580,000 acres of waterbodies at risk of spreading AIS. With nearly 3,000 public boat launches in Minnesota, current prevention practices cannot scale. Thus, we need to differentiate “day boaters” and facilitate their action of cleaning, draining, drying, and disposing of bait while pushing high boats at high risk of transporting zebra mussels to decontamination stations. Protecting Metro Area lakes and waters throughout the State is our ultimate goal.

**How:**

Wildlife Forever and project partners will build permanent, boat ramp infrastructure to empower boaters with tools and technology to prevent the spread of AIS. To ensure the long-term success of the project, county partners will identify locations and adopt station ownership for ongoing maintenance and operation. This project will allow for prioritization of sites with key stakeholder input based upon biological needs and priorities. The project will cover the cost of installation and maintenance for up to four years after which time stations will be given to supporting partners. During

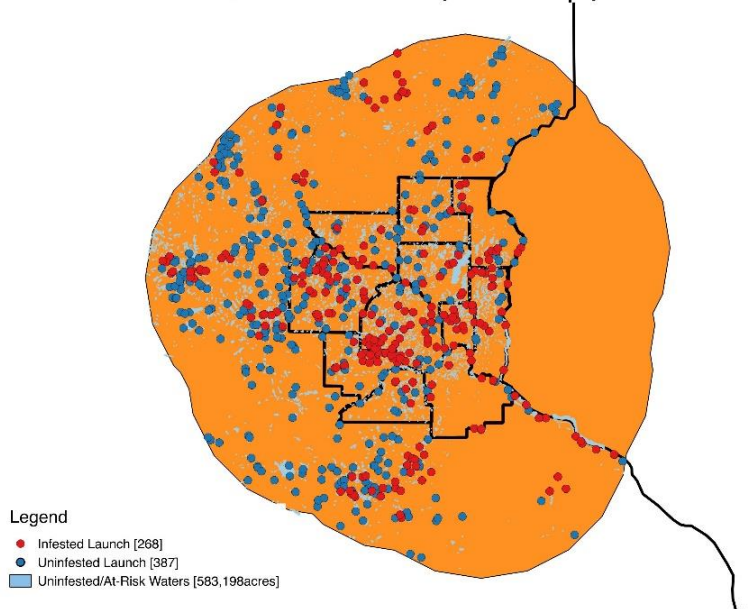
platform for monitoring station and tool use. During this time, an enhanced education and outreach campaign will support public awareness of Clean Drain Dry prevention steps and empower boaters to use the self-service cleaning stations.

**When:**

Outcome	Completion Date
1. Site Identification	July '19 - May '20
2. Installation of cleaning stations	June '20- Aug. '21
3. Collect data via IoT platform	June '20 - Dec. '22
4. Implement outreach and education	June 19'- Oct '22
5. Identify local partners with decontamination units	Sept '19 - May '20
6. Creation of online mapping/education platform	July '19 – Aug. '19
7. Installation of GPS technology on decon units	April '20 – Oct. '22
8. Evaluation and Reporting	June '22



**Metro Area Risk (50mi Buffer)**





## Wright Soil & Water Conservation District

---

*Wright SWCD  
311 Brighton Avenue S., Suite C  
Buffalo, MN, 55313*

*Tel. (763) 682-1933 Ext. 3  
(763) 682-1970  
Fax. (763) 682-0262  
[www.wrightswcd.org](http://www.wrightswcd.org)*

May 17, 2018

RE: Wildlife Forever - Metro AIS Prevention Program for LSOHC

Dear LSOHC,

The Wright Soil and Water Conservation District is pleased to provide this letter in support of Wildlife Forever pursuing LSOHC funding for the proposal - "Protecting Aquatic Habitats Through Watercraft Cleaning Technology and Community Outreach."

We are in support of preventing AIS spreading to other lakes in the county and are interested in participating.

Sincerely,

A handwritten signature in blue ink that reads "ALOZ".

Alicia O'Hare  
Water Resource Specialist





May 21, 2018

RE: Wildlife Forever - Metro AIS Prevention Program for LSOHC

Dear LSOHC,

Sibley Soil and Water Conservation District is pleased to provide this letter in support of Wildlife Forever pursuing LSOHC funding for the proposal "Protecting Aquatic Habitats Through Watercraft Cleaning Technology and Community Outreach."

We are in support of preventing AIS spreading to other lakes in the county and are interested in participating.

Sincerely,

A handwritten signature in blue ink that reads "Joel Wurscher".

Joel Wurscher  
District Manager





# HENNEPIN COUNTY

## MINNESOTA

May 23, 2018

RE: Wildlife Forever Proposal

"Protecting Aquatic Habitats Through Watercraft Cleaning Technology and Community Outreach."

Dear LSOHC:

The Hennepin County Environment and Energy Department – Aquatic Invasive Species Program is pleased to provide this letter in support of Wildlife Forever pursuing LSOHC funding for the proposal – "Protecting Aquatic Habitats Through Watercraft Cleaning Technology and Community Outreach."

The County has developed an AIS Prevention Plan. According to our plan and guidelines, this project addresses one of our top priorities/guidelines.

We are definitely interested in participating in this project.

Sincerely,



Tony Brough  
Senior Environmentalist  
Environment & Energy Department







Department of  
**Environmental Services/Zoning**

313 North Main Street Room 243  
Center City, MN 55012-9663  
651-213-8370

Kurt Schneider  
Director

Tara Guy  
Zoning Director Assistant

Patty Perreault  
Office Manager

Jim Schneider  
Building Official

Justin Colberg  
Code Enforcement Official

Kellie Strobel  
Sanitarian

Jeff Fertig  
Wetland Specialist

Steve Putman  
Code Enforcement Officer

Ken Roberts  
Planner

Jerry Spetzman  
Water Resources Manager

Lisa Austin-Thibodeau  
Solid Waste Administrator

Paul Dennison  
Household Hazardous  
Waste Coordinator

Monica Kinny  
Environmental Technician

Laird Mork  
Parks Director

DATE: May 25, 2018

RE: Wildlife Forever - Metro AIS Prevention Program for  
LSOHC

Dear LSOHC,

Chisago County pleased to provide this letter in support of  
Wildlife Forever pursuing LSOHC funding for the proposal  
- "Protecting Aquatic Habitats Through Watercraft Cleaning  
Technology and Community Outreach."

We are in support of preventing AIS spreading to other lakes  
in the county and are interested in participating.

Sincerely,

Susanna Wilson Witkowski  
Water Resource Manager  
Chisago County  
313 N. Main St.  
Center City, MN 55012  
651-213-8380  
[susanna.wilson@chisagocounty.us](mailto:susanna.wilson@chisagocounty.us)





**Anoka County**  
PARKS DEPARTMENT

Parks and  
Recreation Office  
763-324-3300

Park  
Maintenance  
763-324-3326

Park Services  
763-324-3425

Natural Resources  
763-324-3413

Bunker Beach  
Water Park  
763-324-3310

Chomonix  
Golf Course  
763-324-3434

Wargo  
Nature Center  
763-324-3350

May 22, 2018

**Wildlife Forever - Metro AIS Prevention Program**

Lessard-Sams Outdoor Heritage Council,

Anoka County Parks is pleased to provide this letter in support of Wildlife Forever pursuing Lessard-Sams Outdoor Heritage Council funding for the proposal, "Protecting Aquatic Habitats Through Watercraft Cleaning Technology and Community Outreach."

We are in support of efforts to reduce the spread of aquatic invasive species throughout Anoka County and are a willing partner in achieving this directive.

Sincerely,

Andy Soltvedt  
Marketing & Visitor Services Manager





**Public Services Division**  
Carver County Government Center  
600 East 4th Street  
Chaska, MN 55318-2102

**CARVER  
COUNTY**

DATE: May 17, 2018

RE: Wildlife Forever - Metro AIS Prevention Program for LSOHC

Dear LSOHC,

The Carver County Water Management Organization (CCWMO) is pleased to provide this letter in support of Wildlife Forever pursuing LSOHC funding for the proposal - "Protecting Aquatic Habitats Through Watercraft Cleaning Technology and Community Outreach."

We are in support of preventing AIS spreading to other lakes in the county and are interested in participating.

Sincerely,

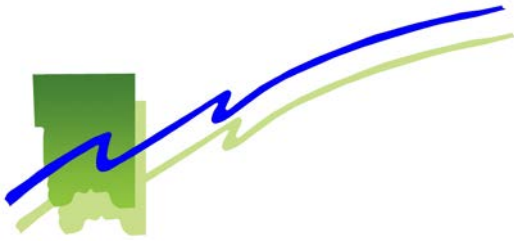
Andrew Dickhart  
Aquatic Invasive Species Coordinator







**Ramsey Conservation District**



1425 Paul Kirkwold Drive  
Highway 96 & Hamline Avenue  
Arden Hills, MN 55112  
Telephone 651-266-7270  
Fax 651-266-7276

DATE: May 17, 2018

RE: Wildlife Forever - Metro AIS Prevention Program for LSOHC

Dear LSOHC,

The Ramsey Conservation District is pleased to provide this letter in support of Wildlife Forever pursuing LSOHC funding for the proposal - "Protecting Aquatic Habitats Through Watercraft Cleaning Technology and Community Outreach."

We are in support of preventing AIS spreading to other lakes in the county and are interested in participating.

Sincerely,

Justin Townsend

A handwritten signature in black ink, appearing to read "Justin Townsend". The signature is fluid and cursive, with a long horizontal stroke at the end.

Conservation Technician  
Ramsey Conservation District





**SHERBURNE SOIL AND  
WATER  
CONSERVATION DISTRICT**

14855 Hwy. 10  
Elk River, MN 55330  
Ph. (763) 241-1170 ext.4  
Fax (763) 635-0037  
[www.sherburneswcd.org](http://www.sherburneswcd.org)

DATE: May 21, 2018

RE: Wildlife Forever - Metro AIS Prevention Program for LSOHC

Dear LSOHC,

The Sherburne Soil & Water Conservation District is pleased to provide this letter in support of Wildlife Forever pursuing LSOHC funding for the proposal - "Protecting Aquatic Habitats Through Watercraft Cleaning Technology and Community Outreach."

We are in support of preventing AIS spreading to other lakes in the county and are interested in participating.

Sincerely,

A handwritten signature in blue ink that reads "Francine Larson". The signature is written in a cursive, flowing style.

Francine Larson  
District Manager  
Sherburne SWCD