

Lessard-Sams Outdoor Heritage Council

Fiscal Year 2020 / ML 2019 Request for Funding



Date: May 31, 2018

Program or Project Title: Pig's Eye Lake Islands Habitat Restoration and Enhancement

Funds Requested: \$4,337,200

Manager's Name: Scott Yonke

Organization: Ramsey County Parks and Recreation

Address: 2015 Van Dyke St

City: Maplewood, MN 55109

Office Number: 651-363-3786

Email: scott.yonke@co.ramsey.mn.us

Website: <https://www.ramseycounty.us/residents/parks-recreation>

County Locations: Ramsey

Regions in which work will take place:

- Metro / Urban

Activity types:

- Restore
- Enhance

Priority resources addressed by activity:

- Wetlands
- Forest
- Prairie
- Habitat

Abstract:

Ramsey County and the U.S. Army Corps of Engineers propose to enhance and restore habitat in Pigs Eye Lake by building islands and marsh to benefit migratory birds, waterfowl, and fish. Island construction would restore wetland habitat and functions that have been lost in the 640-acre backwater due to erosion and degradation and enhance the surrounding area by reducing turbidity, preventing further erosion, and increasing habitat diversity. The project would protect areas of biodiversity significance and improve the Mississippi River wildlife corridor in the heart of the St. Paul metropolitan area.

Design and scope of work:

Problem: Pigs Eye Lake is a large backwater of the Mississippi River, located in the southeast corner of St. Paul. The lake is shallow, open water, with a maximum depth of about 4 feet. The shallow depth and mucky lake bottom mean that the wind-generated waves cause a significant adverse effect on water quality and substrate stability. The waves also continuously erode the valuable vegetation on the edges of the lake, which has led to an estimated loss of 111 acres of wetland shoreline habitat since 1951. The conditions have created a negative feedback loop with no foreseeable improvements without intervention. Another 37.5 acres of biologically significant marsh and bottomland forest is at risk over the next 50 years, and new vegetation is unable to establish under the current conditions.

Resource Significance: Despite the present poor conditions of Pigs Eye Lake, the area is a rare resource in this stretch of the Mississippi River where the floodplain is narrow and urban development is heavy. The shorelines and floodplain protected by this project have been identified by the Minnesota Biological Survey as areas of either outstanding or moderate biodiversity significance. The adjacent heron rookery is one of the largest in the state. Pigs Eye Lake is part of a network of aquatic corridors with connections to the Mississippi River, the Minnesota River, and Battle Creek. This project would restore, protect, and enhance these resources.

Proposed Plan: The proposed plan is to construct a complex of 7 islands in Pigs Eye Lake. The features were designed to provide a variety of floodplain habitat types, blend in with the natural environment, and create barriers for wind, waves, and visual disturbances to visiting wildlife. Twenty acres of islands would be constructed and planted with a mix of native floodplain species. Shallow sandbar

habitat is incorporated into the island perimeters. Three of the islands were specially-designed to establish 18 acres of wetland by creating enclosed, protected spaces in their interiors that would be planted with native wetland plants. The islands were strategically placed to serve as barriers to wind and protect the existing valuable shoreline habitat from further erosion.

Outcomes for wildlife: The project would result in numerous habitat improvements, including: protected stopover areas for migrating ducks and waterfowl; preservation of the existing valuable shoreline; cover, spawning, and structural habitat for native fish; sandy areas for turtle nesting; shallow and more stable substrate to encourage macroinvertebrate colonization; water quality improvement due to reduced sediment re-suspension; and incorporation of depth and habitat diversity within the lake.

Collaboration: The project has been extensively coordinated with natural resource agencies and other stakeholders, and has received widespread support. Stakeholder meetings were held throughout the planning process, and representatives from the Minnesota DNR, National Park Service, U.S. Fish and Wildlife Service, and Ramsey County participated in discussions to provide recommendations specific to habitat needs. Federal and State environmental review processes have been completed. Permitting agencies have not indicated obstacles with the issuance of permits for project construction.

Which sections of the Minnesota Statewide Conservation and Preservation Plan are applicable to this project:

- H2 Protect critical shoreland of streams and lakes
- H6 Protect and restore critical in-water habitat of lakes and streams

Which other plans are addressed in this proposal:

- Managing Minnesota's Shallow Lakes for Waterfowl and Wildlife
- Minnesota DNR Strategic Conservation Agenda

Describe how your program will advance the indicators identified in the plans selected:

As identified in "Managing Minnesota's Shallow Lakes for Waterfowl and Wildlife," shallow lake habitats are important areas for food and rest during waterfowl migration, but their quality in Minnesota has declined markedly. The proposed project would improve Pigs Eye Lake in the heart of the Mississippi Flyway by (1) protecting existing aquatic vegetation and habitat, (2) creating additional floodplain and marsh habitat, (3) reducing turbidity and increasing water quality in the lake, and (4) creating depth and substrate diversity. The project would improve habitat for Minnesota's Species of Greatest Conservation Need including water birds such as grebes and terns, shorebirds, frogs, toads, and turtles. These project outcomes would also meet the Minnesota DNR's Strategic Conservation Agenda's goals of conserving and enhancing Minnesota's waters, natural lands, and diverse fish and wildlife habitats and improving outdoor recreation opportunities in an urban area with a high concentration of users.

Which LSOHC section priorities are addressed in this proposal:

Metro / Urban:

- Protect habitat corridors, with emphasis on the Minnesota, Mississippi, and St. Croix rivers (bluff to floodplain)

Describe how your program will produce and demonstrate a significant and permanent conservation legacy and/or outcomes for fish, game, and wildlife as indicated in the LSOHC priorities:

The proposed project would protect and enhance the habitat in a shallow backwater lake of over 640 acres that is directly connected to the main channel of the Mississippi River. The floodplain in this stretch of the river is narrow and highly urbanized, and this area would provide a much needed sanctuary for wildlife moving through this corridor.

Describe how the proposal uses science-based targeting that leverages or expands corridors and complexes, reduces fragmentation or protects areas identified in the MN County Biological Survey:

Pigs Eye Lake is located within several nationally- and locally-recognized important habitat corridors. The area is central to the Mississippi Flyway, the migratory corridor used by forty percent of North America's waterfowl and shorebirds. Pigs Eye Lake lies within the "Mississippi River Twin Cities Important Bird Area" designated by the Audubon Society, where over 200 bird species have been observed. The lake is directly adjacent to an area designated as a site of outstanding biodiversity significance by the Minnesota Biological Survey – the Pigs Eye Island Scientific and Natural Area – which supports a mixed-species heron rookery totaling over 1,600 nesting pairs, and is one of four locations within Minnesota where the yellow-crowned night herons are known to nest. Pigs Eye Lake has a direct connection to 32 miles of the Mississippi River and almost 250 miles of the Minnesota River. At least 72 species have been recently documented in Mississippi River Pool 2.

At a local level, Pigs Eye Lake is one of few large, off-channel areas within the floodplain near St. Paul that has been mostly preserved from development, but which continues to be degraded by unaddressed stressors such as wind-induced waves. The shoreline habitat being degraded includes 327 acres of that is recognized by the Minnesota Biological Survey as a site of moderate biodiversity significance. Significant gains in habitat can be made by protecting and preserving the existing quality habitat around the lake from further erosion and by enhancing the shallow open-water interior. Both of these goals can be met by strategically constructing habitat within the center of the lake which also would then serve as a wind barrier to protect the existing shoreline.

How does the proposal address habitats that have significant value for wildlife species of greatest conservation need, and/or threatened or endangered species, and list targeted species:

The proposed project's habitat-based approach would benefit numerous species in conservation need. Minnesota's Wildlife Action Plan for 2015-2025 identified that habitat loss, degradation, and fragmentation are the primary stressors affecting Species of Greatest Conservation Need in Minnesota. Restoring and enhancing Pigs Eye Lake would add value to hundreds of acres of floodplain habitat within a major aquatic corridor and avian migratory route. The improved habitat would benefit many species, throughout different critical times of the year, and would increase habitat diversity and resilience to climate change and other future stressors.

Many bird species of conservation need have been documented nearby that rely upon aquatic and wetland habitats would benefit from the project's enhancements, including: northern pintail, American black duck, Sprague's pipit (endangered), common nighthawk, northern harrier, belted kingfisher, black-crowned night heron, and American white pelican (special concern). Because of the proximity to the Pigs Eye Island Heron Rookery SNA, the project would be expected to increase the number of birds supported at the rookery or improve their nesting success. Sandy areas incorporated into the islands would serve as valuable nesting areas for threatened turtle species, including the Blanding's turtle and wood turtle.

Identify indicator species and associated quantities this habitat will typically support:

Fall waterbird counts from the last three years at Pig's Eye Lake estimated approximately 20,000 Duck Use Days over the course of 45 days during the fall migratory period. Following project construction, the area is expected to support over 65,000 duck use days, based on the increase in habitat types and suitability, the improvement of habitat present, and the added increased perimeter to area ratio.

The proposed project would protect enough high-quality wetland to provide breeding habitat for an estimated 50 marsh wren pairs and create new habitat for an estimated additional 80 pairs, based on average territory sizes.

The U.S. Fish and Wildlife Service's Habitat Evaluation Procedures (HEP) were used to assess the value of the project for wildlife. Two indicator species were selected for evaluation to reflect the project objectives: migratory habitat for dabbling ducks and habitat for the wetland-dwelling marsh wren. Project alternatives were evaluated for a period of 50 years, and the results were compared to the existing and projected future conditions. Data used in project planning and modeling included aerial imagery, LIDAR, bathymetric surveys, vegetation surveys, wind fetch modeling, migratory bird counts, and more. The habitat benefits of each project were combined with cost estimates to compare the value that each alternative would provide.

Outcomes:

Programs in metropolitan urbanizing region:

- A network of natural land and riparian habitats will connect corridors for wildlife and species in greatest conservation need *There is limited availability of habitat in the St. Paul metro area due to heavy development and the naturally narrow floodplain. Pigs Eye Lake is one of the few large backwaters in the area but is currently degraded, windswept, and devoid of vegetation or habitat diversity. The proposed project would enhance and restore the area to provide important and locally rare stopover habitat for migrating waterfowl and other birds along the Mississippi Flyway. The project would result in increased vegetation and improved substrate for spawning, shelter, and food resources for fish, reptiles, and other species of conservation need.*

How will you sustain and/or maintain this work after the Outdoor Heritage Funds are expended:

Ramsey County and the Corps will maintain the project to ensure sustainability of the islands. A post-construction monitoring and adaptive management plan has been prepared that will guide monitoring and maintenance actions for 10 years following construction. Ramsey County will then assume responsibility for long-term maintenance and will integrate it into the master plan update for the Pigs Eye Lake section of Battle Creek Regional Park. Shared short-term and long-term management actions will be funded with County budget through Regional Park and Trail Operation and Trail Maintenance funds.

Initial short-term management will be conducted by the Corps and costs would be shared between the Corps and Ramsey County. Performance indicators include waterbird counts, vegetation establishment, island elevation surveys, water quality monitoring, and shoreline erosion analyses. These actions are detailed in the project outcomes table. The long-term maintenance would focus on vegetation maintenance, erosion control, and wildlife management to include removal of invasive species and replanting as required.

Maintenance needs are anticipated to be low because the island design has incorporated lessons learned from island building projects on the Mississippi over the past 30 years. The islands are designed to be geotechnically stable and to withstand flooding, waves, and ice.

Explain the things you will do in the future to maintain project outcomes:

Year	Source of Funds	Step 1	Step 2	Step 3
2021	USACE/Ramsey County	Upland Seedling Survival and Growth Monitoring	Supplemental planting or targeted herbivory control, as necessary	
2026	USACE/Ramsey County	Marsh and Wet Prairie Establishment Monitoring	Supplemental planting, chemical control, etc., as necessary	
2030	USACE/Ramsey County	Upland Long-term Seedling Survival and Growth Monitoring	Supplemental Planting, fencing, herbicide application, or mowing, as necessary	
2030	USACE/Ramsey County	Marsh and Wet Prairie Establishment Monitoring	Supplemental planting, chemical control, etc., as necessary	
2030 and beyond	Ramsey County	Monitor vegetation, stability, and wildlife use	Removal of invasive species and replanting as necessary to maintain ecological success.	
2021	USACE/Ramsey County	Marsh and Wet Prairie Establishment Monitoring	Supplemental planting, chemical control, etc., as necessary	
2021	USACE/Ramsey County	Water Quality (Turbidity or TSS) Monitoring	Adaptive Management as necessary	
2021-2025	USACE/Ramsey County	Fall Migratory Waterbird Use Survey	Adaptive Management as necessary	
2022 & 2025	USACE/Ramsey County	Island Settlement and Geotechnical Monitoring	Adaptive Management as necessary	
2023	USACE/Ramsey County	Upland Long-term Seedling Survival and Growth Monitoring	Supplemental Planting, fencing, herbicide application, or mowing, as necessary	
2023	USACE/Ramsey County	Marsh and Wet Prairie Establishment Monitoring	Supplemental planting, chemical control, etc., as necessary	
2025 & 2030	USACE/Ramsey County	Shoreline Erosion Monitoring	Adaptive Management as necessary	
2026	USACE/Ramsey County	Upland Long-term Seedling Survival and Growth Monitoring	Supplemental Planting, fencing, herbicide application, or mowing, as necessary	

What is the degree of timing/opportunistic urgency and why it is necessary to spend public money for this work as soon as possible:

Pigs Eye Lake has long been recognized as an important habitat improvement target in the metro Mississippi River. Correspondence from the U.S Fish and Wildlife Service dating as far back as the early 1970s called for the preservation of the lake’s resources, but efforts to improve the area have not found traction until now. Over two years of planning, engineering, interagency coordination, and public review have led to a shovel-ready project with overwhelming public support. Extraordinary funding leverage exists from several U.S. Army Corps of Engineers funding sources and in-kind resources of sand are available for use in construction of the proposed islands. The existing valuable shoreline marsh habitat is eroding at an alarming rate of approximately 0.75 acres per year and action is necessary to prevent further habitat loss from occurring.

How does this proposal include leverage in funds or other effort to supplement any OHF appropriation:

The main portion of the leverage funds will come from the USACE Continuing Authorities Program, Beneficial Use of Dredged Material, Section 204 of the Water Resources Development Act of 1992, as amended. With additional funds coming from the USACE Channel Management Budget. These funds are confirmed.

USACE Continuing Authorities Program, Beneficial Use of Dredged Material, Section 204 of the Water Resources Development Act of 1992, as amended. USACE Channel Management Budget.

Relationship to other funds:

- Parks and Trails Fund
- USACE Continuing Authorities Program, Beneficial Use of Dredged Material, Section 204 of the Water Resources Development Act of 1992, as amended. USACE Channel Management Budget.

Describe the relationship of the funds:

Parks and Trails Fund: A key component for providing sustainability to the project is environmental education. Ramsey County is in the process of preparing a master plan update for Battle Creek Regional Park including the Pigs Eye Lake section with multiple agencies and stakeholders to ensure protection of sensitive cultural resources within the Mississippi River corridor by Pigs Eye Lake. As part of master planning activities, a conceptual plan will be developed for vehicular and pedestrian access, additional park and recreational features such as a parking area, trails, observation platform/viewing areas, interpretive signage, and environmental programming. These features will allow increased access and environmental education for the project area. Funding for master planning activities and potential recreational development will be provide through the Legacy Amendment Parks and Trails fund.

Per MS 97A.056, Subd. 24, Any state agency or organization requesting a direct appropriation from the OHF must inform the LSOHC at the time of the request for funding is made, whether the request is supplanting or is a substitution for any previous funding that was not from a legacy fund and was used for the same purpose:

Lessard-Sams funding request for the Pig's Eye Lake Islands Habitat Restoration and Enhancement Project is not supplanting existing funds from a previous project.

Describe the source and amount of non-OHF money spent for this work in the past:

Appropriation Year	Source	Amount
FY15-FY17	Section 204 of the WRDA of 1992, as amended	\$650,000

Activity Details

Requirements:

If funded, this proposal will meet all applicable criteria set forth in MS 97A.056 - **Yes**

Will restoration and enhancement work follow best management practices including MS 84.973 Pollinator Habitat Program - **Yes**

Is the restoration and enhancement activity on permanently protected land per 97A.056, subd 13(f), tribal lands, and/or public waters per MS 103G.005, Subd. 15 - **Yes (County/Municipal, Public Waters, Mississippi National River and Recreational Area)**

Do you anticipate federal funds as a match for this program - **Yes**

Are the funds confirmed - **Yes**

[Documentation](#)

What are the types of funds?
In-Kind Match - \$11232800

Land Use:

Will there be planting of corn or any crop on OHF land purchased or restored in this program - **No**

Accomplishment Timeline

Activity	Approximate Date Completed
Execute Project Partnership Agreement with USACE	September 2018
Begin Plans and Specifications	December 2018
Complete Plans and Specifications	May 2019
Advertise Project for Bids	October 2019
Award Contract	November 2019
Complete island construction	July 2020
Complete topsoil placement and planting of islands	June 2021

Budget Spreadsheet

Total Amount of Request: \$4,337,200

Budget and Cash Leverage

Budget Name	LSOHC Request	Anticipated Leverage	Leverage Source	Total
Personnel	\$0	\$0		\$0
Contracts	\$4,337,200	\$11,232,800	Federal - Army Corps of Engineers	\$15,570,000
Fee Acquisition w/ PILT	\$0	\$0		\$0
Fee Acquisition w/o PILT	\$0	\$0		\$0
Easement Acquisition	\$0	\$0		\$0
Easement Stewardship	\$0	\$0		\$0
Travel	\$0	\$0		\$0
Professional Services	\$0	\$0		\$0
Direct Support Services	\$0	\$0		\$0
DNR Land Acquisition Costs	\$0	\$0		\$0
Capital Equipment	\$0	\$0		\$0
Other Equipment/Tools	\$0	\$0		\$0
Supplies/Materials	\$0	\$0		\$0
DNR IDP	\$0	\$0		\$0
Total	\$4,337,200	\$11,232,800	-	\$15,570,000

Amount of Request: \$4,337,200
 Amount of Leverage: \$11,232,800
 Leverage as a percent of the Request: 258.99%
 DSS + Personnel: \$0
 As a % of the total request: 0.00%
 Easement Stewardship: \$0
 As a % of the Easement Acquisition: -%

Does the amount in the contract line include R/E work?

All of the funds in the contracting line will be for restoration and enhancement work.

Describe and explain leverage source and confirmation of funds:

The main portion of the leverage funds will come from the USACE Continuing Authorities Program, Beneficial Use of Dredged Material, Section 204 of the Water Resources Development Act of 1992, as amended. With additional funds coming from the USACE Channel Management Budget. These funds are confirmed.

Does this proposal have the ability to be scalable? - No

Output Tables

Table 1a. Acres by Resource Type

Type	Wetlands	Prairies	Forest	Habitats	Total
Restore	18	0	16	0	34
Protect in Fee with State PILT Liability	0	0	0	0	0
Protect in Fee W/O State PILT Liability	0	0	0	0	0
Protect in Easement	0	0	0	0	0
Enhance	0	0	0	552	552
Total	18	0	16	552	586

Table 2. Total Requested Funding by Resource Type

Type	Wetlands	Prairies	Forest	Habitats	Total
Restore	\$1,084,300	\$0	\$1,084,200	\$0	\$2,168,500
Protect in Fee with State PILT Liability	\$0	\$0	\$0	\$0	\$0
Protect in Fee W/O State PILT Liability	\$0	\$0	\$0	\$0	\$0
Protect in Easement	\$0	\$0	\$0	\$0	\$0
Enhance	\$0	\$0	\$0	\$2,168,700	\$2,168,700
Total	\$1,084,300	\$0	\$1,084,200	\$2,168,700	\$4,337,200

Table 3. Acres within each Ecological Section

Type	Metro/Urban	Forest/Prairie	SE Forest	Prairie	Northern Forest	Total
Restore	34	0	0	0	0	34
Protect in Fee with State PILT Liability	0	0	0	0	0	0
Protect in Fee W/O State PILT Liability	0	0	0	0	0	0
Protect in Easement	0	0	0	0	0	0
Enhance	552	0	0	0	0	552
Total	586	0	0	0	0	586

Table 4. Total Requested Funding within each Ecological Section

Type	Metro/Urban	Forest/Prairie	SE Forest	Prairie	Northern Forest	Total
Restore	\$2,168,500	\$0	\$0	\$0	\$0	\$2,168,500
Protect in Fee with State PILT Liability	\$0	\$0	\$0	\$0	\$0	\$0
Protect in Fee W/O State PILT Liability	\$0	\$0	\$0	\$0	\$0	\$0
Protect in Easement	\$0	\$0	\$0	\$0	\$0	\$0
Enhance	\$2,168,700	\$0	\$0	\$0	\$0	\$2,168,700
Total	\$4,337,200	\$0	\$0	\$0	\$0	\$4,337,200

Table 5. Average Cost per Acre by Resource Type

Type	Wetlands	Prairies	Forest	Habitats
Restore	\$60,239	\$0	\$67,763	\$0
Protect in Fee with State PILT Liability	\$0	\$0	\$0	\$0
Protect in Fee W/O State PILT Liability	\$0	\$0	\$0	\$0
Protect in Easement	\$0	\$0	\$0	\$0
Enhance	\$0	\$0	\$0	\$3,929

Table 6. Average Cost per Acre by Ecological Section

Type	Metro/Urban	Forest/Prairie	SE Forest	Prairie	Northern Forest
Restore	\$63,779	\$0	\$0	\$0	\$0
Protect in Fee with State PILT Liability	\$0	\$0	\$0	\$0	\$0
Protect in Fee W/O State PILT Liability	\$0	\$0	\$0	\$0	\$0
Protect in Easement	\$0	\$0	\$0	\$0	\$0
Enhance	\$3,929	\$0	\$0	\$0	\$0

Target Lake/Stream/River Feet or Miles

Pigs Eye Lake

I have read and understand Section 15 of the Constitution of the State of Minnesota, Minnesota Statute 97A.056, and the Call for Funding Request. I certify I am authorized to submit this proposal and to the best of my knowledge the information provided is true and accurate.

Parcel List

Explain the process used to select, rank and prioritize the parcels:

All of Pigs Eye Lake and surrounding adjacent uplands were selected as the project area, which spans four Sections in Ramsey County. All Sections include both Restoration and Enhancement activities because the project was designed for the lake as a whole. Restoration activities would restore the types and functions of habitats once in Pigs Eye Lake while the project would Enhance the much of the surrounding area. The "Activity" category in the Parcel List was selected based on acreage to approximately represent the acres of restoration and enhancement proposed within the lake overall.

Section 1 - Restore / Enhance Parcel List

Ramsey

Name	TRDS	Acres	Est Cost	Existing Protection?
Pigs Eye Lake NE	02822211	76	\$0	Yes
Pigs Eye Lake NW	02822210	138	\$0	Yes
Pigs Eye Lake SE	02822214	134	\$0	Yes
Pigs Eye Lake SW	02822215	394	\$0	Yes

Section 2 - Protect Parcel List

No parcels with an activity type protect.

Section 2a - Protect Parcel with Bldgs

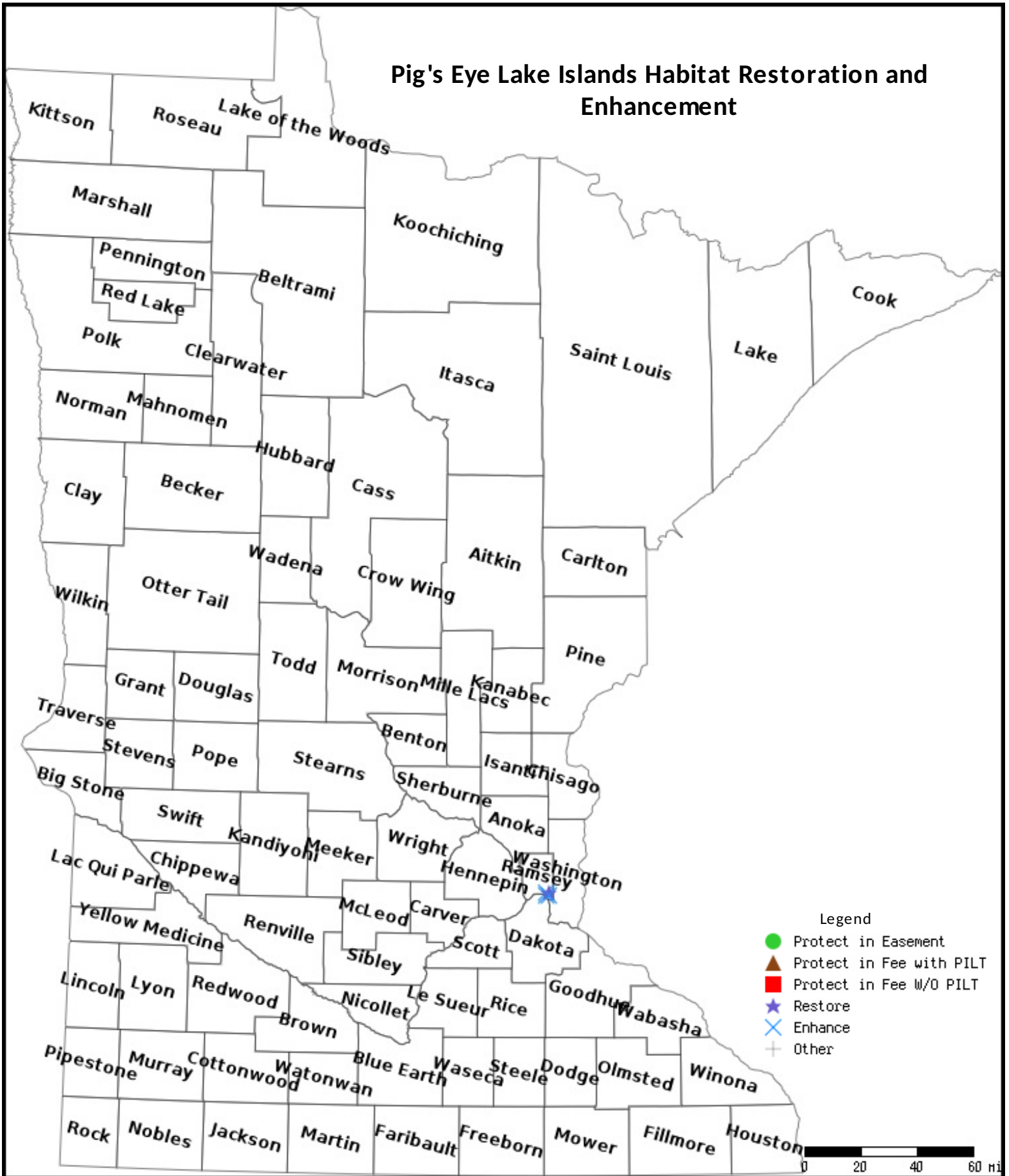
No parcels with an activity type protect and has buildings.

Section 3 - Other Parcel Activity

No parcels with an other activity type.

Parcel Map

Pig's Eye Lake Islands Habitat Restoration and Enhancement



Data Generated From Parcel List

The Problem

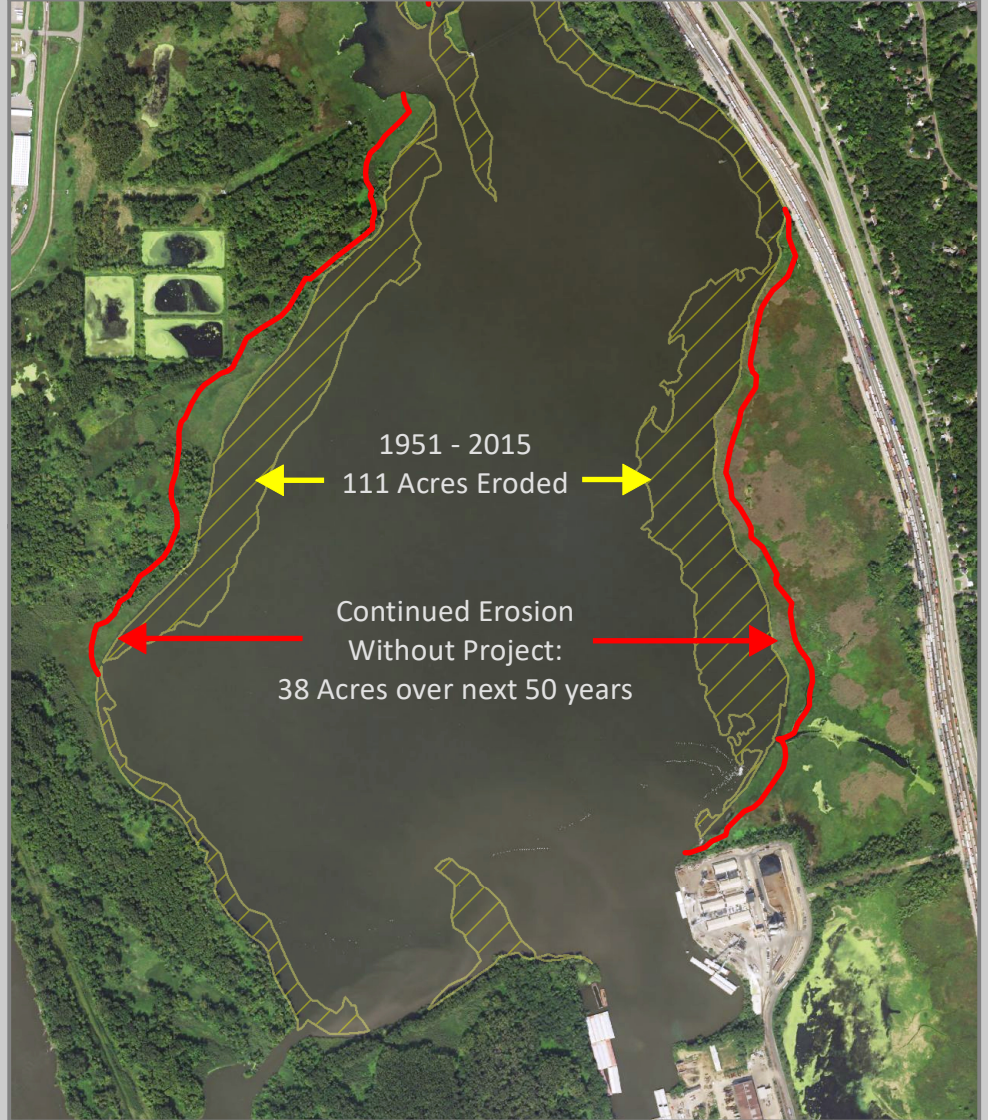
Shoreline Erosion, Past and Future

Large, open water + Wind-generated waves + Loose mucky sediments
= Turbid water, no vegetation, and more erosion!

1951



Present-day Pigs Eye Lake



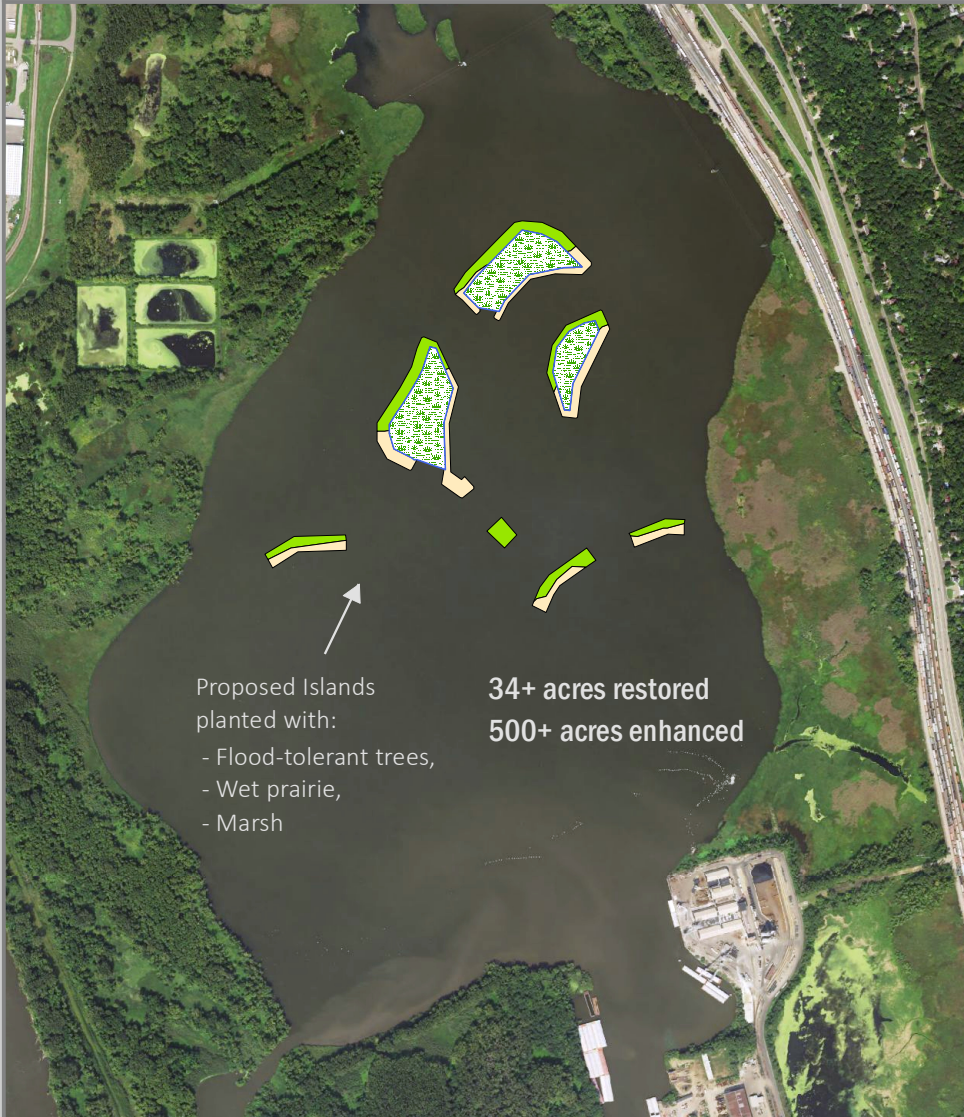
The Solution

Strategic Habitat Construction

Carefully Designed Islands and Marsh

= Restored Habitat + Reduced Wind/Waves + Stable Shorelines + Reduced Turbidity

Proposed Islands



Present Day Pigs Eye Lake Photo



Example Islands Constructed in Pool 8





United States Department of the Interior

NATIONAL PARK SERVICE
Mississippi National River and Recreation Area
111 E. Kellogg Blvd., Suite 105
St. Paul, Minnesota 55101-1256

IN REPLY REFER TO:

May 24, 2018

Mr. Scott Yonke
Director of Planning and Development
Ramsey County Parks and Recreation
2015 Van Dyke Street
Maplewood, Minnesota 55109

Dear Mr. Yonke,

This letter is in regard to the Pigs Eye Lake Islands Habitat Restoration and Enhancement project, and the Ramsey County Parks and Recreation Department pursuing the FY20 Lessard-Sams Outdoor Heritage Council funding application. As you know, the U.S. National Park Service, Mississippi National River and Recreation Area has been involved in the project coordination over the course of the last two years. We believe, that when successfully implemented, the project will produce a restored and enhanced habitat within Pigs Eye Lake. We will continue to support the effort and reiterate the importance of a restored and enhanced habitat on Pigs Eye Lake.

If you have any questions, John_Anfinson@nps.gov; 651-293-8432

Sincerely,

John O. Anfinson
Superintendent



DEPARTMENT OF THE ARMY
ST. PAUL DISTRICT, CORPS OF ENGINEERS
180 FIFTH STREET EAST, SUITE 700
ST. PAUL, MN 55101-1678

MAY 22 2018

Project Management Branch

Mr. Scott Yonke
Director of Planning and Development
Ramsey County Parks and Recreation
2015 Van Dyke Street
Maplewood, Minnesota 55109

Dear Mr. Yonke,

This letter is in regard to the Pigs Eye Lake Islands Habitat Restoration and Enhancement project. I am writing to document our support for the Ramsey County Parks and Recreation Department's FY20 Lessard-Sams Outdoor Heritage Council funding application. As you know, the United States Army Corps of Engineers, St. Paul District (USACE) has been partnering with Ramsey County Parks and Recreation Department on the development of a feasibility study through the Section 204 Continuing Authorities Program Beneficial Use of Dredged Material program. Through this \$650,000 feasibility study we have developed a plan, that when implemented will produce a restored and enhanced habitat within Pigs Eye Lake. Under this project the USACE will provide \$11,232,800 to design and implement the project.

We are excited to implement this project which will restore and enhance such a vast habitat, especially in such close proximity to a major metropolitan area. For questions regarding this letter of support please contact Nathan Campbell at 651-290-5544.

Sincerely,

A handwritten signature in black ink, appearing to read "Samuel L. Calkins".

Samuel L. Calkins
Colonel, Corps of Engineers
District Commander



United States Department of the Interior
FISH AND WILDLIFE SERVICE
Ecological Services
Minnesota-Wisconsin Field Office
4101 American Boulevard East
Bloomington, Minnesota 55425-1665



May 29, 2018

Mr. Scott Yonke
Director of Planning and Development
Ramsey County Parks and Recreation
2015 Van Dyke Street
Maplewood, Minnesota 55109

Dear Mr. Yonke,

This letter is in regard to the Pigs Eye Lake Islands Habitat Restoration and Enhancement project. As you know, the U.S. Fish and Wildlife Service has been involved in the project coordination over the course of the last two years. We believe, that when successfully implemented, the project will enhance habitat for waterfowl and other migratory birds through creation of island habitat within the lake. In addition, native fishes should benefit from the addition of aquatic vegetation plantings and more suitable spawning substrate.

Sincerely,

Peter Fasbender
Field Supervisor

May 23, 2018

Mr. Scott Yonke
Director of Planning and Development
Ramsey County Parks and Recreation
2015 Van Dyke Street
Maplewood, MN 55109

Dear Mr. Yonke,

This letter is in regards to the Pig's Eye Lake Islands Habitat Restoration and Enhancement project. I am writing to document our support for the Ramsey County Parks and Recreation Department's FY20 Lessard-Sams Outdoor Heritage Council funding application. As you know, the Minnesota Pollution Control Agency has been involved in the project coordination over the course of the last two years. We believe, that when successfully implemented, the project will produce a restored and enhanced habitat within Pig's Eye Lake. We will continue to support the effort and reiterate the importance of a restored and enhanced habitat on Pigs Eye Lake.

Sincerely,



Hans Neve
Supervisor
St. Paul Office
Remediation DivisionHans Neve

HN/PF:bhj

cc: Michele Mabry, MPAC