

# Lessard-Sams Outdoor Heritage Council

## Fiscal Year 2020 / ML 2019 Request for Funding



**Date:** May 31, 2018

**Program or Project Title:** Protecting Strategic Forestlands Near Camp Ripley

**Funds Requested:** \$5,933,000

**Manager's Name:** Emilee Nelson

**Title:** Minnesota Representative

**Organization:** The Conservation Fund

**Address:** 7101 York Avenue South

**Address 2:** Suite 340

**City:** Edina, MN 55435

**Office Number:** 952-595-5768

**Email:** enelson@conservationfund.org

**Website:** www.conservationfund.org

**County Locations:** Not Listed

### Regions in which work will take place:

- Northern Forest
- Forest / Prairie Transition

### Activity types:

- Protect in Fee

### Priority resources addressed by activity:

- Forest

### Abstract:

Building on multiple years of conservation success, the Camp Ripley Partnership will protect via fee title acquisition high quality wildlife habitat in Cass, Crow Wing, and Morrison Counties to prevent conversion of forestland habitat to farmland or fragmented, unprotected private ownership. This will benefit wildlife and outdoor recreation that is vital to communities in the Brainerd Lakes area. The Conservation Fund will acquire lands in fee to be owned and managed for wildlife habitat purposes by public entities and open for public recreation. Other ecologically important habitat outside of the Camp Ripley Sentinel Landscape will also be targeted for protection.

### Design and scope of work:

The program area lies on the divide between northern forests and the forest/prairie transition. The natural beauty and pristine waters are a reasonable drive from the Twin Cities and are famous for outdoor recreationists to enjoy a multitude of activities. The rich natural resources continue to draw thousands to the area, and this pressure has resulted in splitting larger parcels of private forested areas into smaller, subdivided parcels for potential development. The fragmentation of the landscape has had damaging effects on both wildlife populations in the short term, and management needs of the northern forests and associated habitats in the long term.

At the center lies Camp Ripley, which in 2016 was designated as a federal Sentinel Landscape; one of only six in the nation. This designation by both State and Federal entities has shown success in coordinating strategies among federal, state, and local partners to direct funding to protect key habitats near military bases. With input from local government, stakeholders, and federal agency partners, the Camp Ripley Partnership identified the desired outcomes of protecting the landscape's wildlife management areas, watersheds, and agricultural resources. Because of the national recognition that Camp Ripley and partners have received for habitat protection through the help of state sources, including the Outdoor Heritage Fund, this proposal seizes on the opportunity to leverage even more federal funding to protect wildlife habitat in Minnesota.

Parcels to be acquired will be identified by Camp Ripley partners using existing science-based models and will have quality habitat, add to wildlife corridors and large habitat complexes, and lessen the threat of future fragmentation in this ecologically rich area of the

state. Evaluation criteria include ecological and habitat factors for resident and migratory wildlife species. The selection criteria will ensure that projects will provide landscape-scale benefits that complement previous and future investments in conservation, and will allow for protection of large forested parcels that are under imminent threat of conversion.

Lands will be protected and managed for forest habitat by the appropriate state agency or county land management department. The protected parcels will be managed under standards of third-party certification of sustainable forestry management. Certification ensures that forestry activities are conducted in a manner that maintains the forest's biodiversity, productivity, and ecological processes, and that forest practices meet high standards of ecological, social, and economic sustainability.

The Conservation Fund, with assistance from the Camp Ripley Partnership which is coordinated by The Nature Conservancy staff, will discuss these protection priorities with local officials to ensure that permanent protection and eventual ownership aligns with the conservation goals of the community. The best ownership will be determined depending on what makes the most sense for habitat management needs and to ensure the sustainability of the ecological integrity of the site long-term. Fee acquisition and related activities to protect the identified parcels will be completed by The Conservation Fund.

## **Which sections of the Minnesota Statewide Conservation and Preservation Plan are applicable to this project:**

- H1 Protect priority land habitats
- H3 Improve connectivity and access to recreation

## **Which other plans are addressed in this proposal:**

- Minnesota Forest Resource Council Landscape Plans
- Outdoor Heritage Fund: A 25 Year Framework

## **Describe how your program will advance the indicators identified in the plans selected:**

Minnesota Forest Resource Council (MFRC) Landscape Plans recommend a strategy of large blocks of contiguous forest land that have minimal inclusion of conflicting land uses will be created and/or retained for natural resource and ecological benefits and to minimize land use conflicts. The prioritization of projects will limit fragmentation and ensure contiguous forestland protection.

The 25-Year Framework expects an outcome that forestlands are protected from development and fragmentation. This Program will secure high quality habitat to restrict future development, sustain habitat connectivity, and maintain large forested habitat blocks within the program area.

## **Which LSOHC section priorities are addressed in this proposal:**

### **Forest / Prairie Transition:**

- Protect, enhance, and restore wild rice wetlands, shallow lakes, wetland/grassland complexes, aspen parklands, and shoreland that provide critical habitat for game and nongame wildlife

### **Northern Forest:**

- Provide access to manage habitat on landlocked public properties or protect forest land from parcelization and fragmentation through fee acquisition, conservation or access easement

## **Describe how your program will produce and demonstrate a significant and permanent conservation legacy and/or outcomes for fish, game, and wildlife as indicated in the LSOHC priorities:**

According to the US Census Bureau, the population in Morrison, Cass and Crow Wing Counties have increased by 3% , 5% , and 13% respectively between the years 2000 through 2015. Development pressure and parcelization of existing habitat is the prevailing threat to the wildlife corridors in the proposal area. In the Northern Forest section, forest-based wildlife habitat has experienced substantial decline in recent decades. Securing fee acquisitions in targeted areas will protect forest habitat from fragmentation. The program will aim to improve management and access of existing forestland by public entities and will also open up currently inaccessible areas for hunting, fishing, and recreation opportunities in one of Minnesota's most popular areas.

## **Describe how the proposal uses science-based targeting that leverages or expands corridors and complexes, reduces fragmentation or protects areas identified in the MN County Biological Survey:**

Targeted parcels for protection will be identified using existing Geographic Information Systems (GIS) modeling, including the North Central Conservation Roundtable (NCCR) GIS model created by The Nature Conservancy that identifies biodiversity significance, high

conservation value forests, and critical ecological patches and connections, as well as water quality and existing wetlands and floodplains in the areas identified in this proposal. The science-based models are intended as a tool to help conservation partners evaluate potential conservation projects and develop coordinated support for proposals.

These models are excellent at determining relative ecological importance, but they don't evaluate the initial and long-term costs associated with acquisition. Partners will use these ecological models to weigh the need for permanent protection against the estimated original acquisition costs as well as the long-term restoration and management costs, so that public funds are spent most efficiently. Parcels will also be evaluated for size and adjacency to existing protected lands to build more robust habitat complexes. Our approach will focus on the return on investment, considering ecological and economic factors, that this grant will provide to Minnesotans.

## How does the proposal address habitats that have significant value for wildlife species of greatest conservation need, and/or threatened or endangered species, and list targeted species:

Over 700 rare features or species occurrences have been documented by the MN Biological Survey in the Sentinel Landscape area. These lands provide habitat for several Species of Greatest Conservation Need (SGCN), which include the Northern Long-Eared Bat (threatened), Bald Eagle, and Gray Wolf. There are 65 SGCN found on Camp Ripley. Camp Ripley is home to one of the southern-most wolf populations in Minnesota and the state's highest population of Red-shouldered Hawks which inhabit the large expanse of mature forests found on Camp Ripley, some of the best Red-Shouldered Hawk habitat in the state.

MN DNR 2009 and 2010 fish surveys on the Crow Wing River (Staples to confluence of Mississippi) and Mississippi River (Brainerd to Little Falls) indicate high quality fish communities of Walleye, Muskellunge, and Small-mouth Bass.

The majority of the project area falls within the Anoka Sand Plain and the Hardwood Hills Ecological Subsections. Currently much of the Hardwood Hills subsection is farmed. Important areas of forest and prairie exist, but they are continuously threatened with conversion and fragmentation. Urban development and agriculture occur in one third of the Anoka Sand Plain. This program seeks to protect remaining lands from the threat of development or agricultural pressure, as well as sustain the current connectivity of these habitats.

## Identify indicator species and associated quantities this habitat will typically support:

Ovenbirds (*Seiurus aurocapilla*) are found in upland forests statewide; typically in relatively mature forest but can also be found in younger forests. This species has been identified as a priority species to monitor, as an indication of the health of mature forest uplands, within the area represented by the LSOHC Northern Forest planning section. While territories vary in size and may overlap, an average of 10 pairs for every 10 hectares may be translated to roughly 16 pairs for every 40 acres.

White-tailed deer (*Odocoileus virginianus*) use a wide variety of forested habitats, are found throughout Minnesota, and are an important game species in the state. Deer have also been suggested as potential ecological indicators for forest systems. In the 33 forested deer permit areas for which deer densities are estimated, covering most of the LSOHC Northern Forest section, the six-year average (2010-2015) for pre-fawn deer densities across all deer permit areas is 13 deer per square mile of land (excluding water). This translates to 0.02 deer (pre-fawning) per acre of forest land habitat or roughly 1 deer (pre-fawning) for every 50 acres of land.

Red-shouldered Hawk - In 2006 a study was conducted at Camp Ripley and found 38 nests of this species of special concern. Protection of deciduous forests in this proposal could add 1 nest per square km (McLeod and Andersen, 1998).

## Outcomes:

### Programs in the northern forest region:

- Healthy populations of endangered, threatened, and special concern species as well as more common species *Improved connectivity to create larger, more robust and durable habitat for healthy wildlife populations can be measured over time with multiple models (NCCR, DNR Watershed Health Assessment Framework, MN DNR Wildlife Action Network).*

### Programs in forest-prairie transition region:

- Protected, restored, and enhanced nesting and migratory habitat for waterfowl, upland birds, and species of greatest conservation need *Protection of key forest-prairie transition habitats will enhance habitat for key migratory waterfowl and species of greatest conservation need. Grassland and forest plant species diversity will be a measure of success, as well as temporal species surveys conducted by DNR.*

## How will you sustain and/or maintain this work after the Outdoor Heritage Funds are expended:

Public entities, including DNR and counties, that will own and manage lands included in this proposal will be responsible for habitat management. DNR Forestry uses the Forest Management Investment Account to restore and maintain forested parcels if restoration or

maintenance is required. Counties that will own protected lands use certified forest management and adhere to MN Forest Resource Council management standards that require ecological plans prior to managed harvests. Bud-capping and seedling plantings are practices that these entities currently utilize to maintain forest health.

**Explain the things you will do in the future to maintain project outcomes:**

Year	Source of Funds	Step 1	Step 2	Step 3
2020 and ongoing	DNR Forest Management Investment Account	Manage and monitor lands consistent with forest certification and management plans		
2020 and ongoing	Cass and Crow Wing Counties	Manage and monitor lands consistent with forest certification and management plans		

**What is the degree of timing/opportunistic urgency and why it is necessary to spend public money for this work as soon as possible:**

Morrison, Crow Wing and Cass counties are transition areas where agriculture gives way to forests. Increasing demand for cropland and development is leading to rapid loss of forested lands. The Upper Mississippi Watershed has lost 275 square miles of forests and other natural land that has been converted to agriculture, primarily potato production. This region of the state has the fastest conversion rate from forest to row crop production of any county within the state. Drinking water in the area is also in jeopardy with the increase in irrigation, so protecting the forested lands has become a critical issue. The opportunity to protect significant parcels of forestlands in this area is rapidly diminishing as private lands continue to be sold.

**How does this proposal include leverage in funds or other effort to supplement any OHF appropriation:**

The Camp Ripley partnership has been successful in protection of key parcels surrounding Minnesota’s largest Game Refuge and has brought over \$26 million in federal funds to habitat protection. Federal FY18 REPI program recommendations for Camp Ripley are \$3 million. These federal dollars require matching funds, and funding from this proposal will be used as needed match to tap into these federal dollars.

**Relationship to other funds:**

- Department of Defense

**Describe the relationship of the funds:**

The Conservation Fund is the partner of the national Army National Guard under an agreement to utilize federal REPI acquisition funds, which this proposal will leverage, to acquire environmentally-sensitive lands near Camp Ripley. \$3 million has been approved by federal REPI program in the FY18 budget that has been signed by the President as part of the \$90 million REPI budget.

**Per MS 97A.056, Subd. 24, Any state agency or organization requesting a direct appropriation from the OHF must inform the LSOHC at the time of the request for funding is made, whether the request is supplanting or is a substitution for any previous funding that was not from a legacy fund and was used for the same purpose:**

This request is not supplanting nor a substitution of any previous funding.

**Describe the source and amount of non-OHF money spent for this work in the past:**

Appropriation Year	Source	Amount
2007-present	Department of Defense/Army National Guard Bureau	26,000,000
2010-present	LCCMR	860,000

**Activity Details**

## Requirements:

If funded, this proposal will meet all applicable criteria set forth in MS 97A.056 - **Yes**

Will county board or other local government approval be formally sought prior to acquisition? - **No**

We will speak with local governments to make sure they are aware of activities and pursue projects that make sense with local goals. Since the Camp Ripley Partnership began, biennial public meetings, multiple field trip events and celebrations have occurred that invited public and local official participation.

Is the land you plan to acquire (fee title) free of any other permanent protection - **Yes**

Do you anticipate federal funds as a match for this program - **Yes**

Are the funds confirmed - **Yes**

### Documentation

What are the types of funds?

**Cash Match** - \$3000000

## Land Use:

Will there be planting of corn or any crop on OHF land purchased or restored in this program - **No**

Is this land currently open for hunting and fishing - **No**

Will the land be open for hunting and fishing after completion - **Yes**

Lands acquired through this proposal will be open for public access.

Are there currently trails or roads on any of the acquisitions on the parcel list - **Yes**

Describe the types of trails or roads and the allowable uses:

There are existing routes on potential project parcels that were developed for timber harvest and management purposes. In addition to forestry related activities, these routes have been used by hunters and others for recreation, and some of that use has included ATV travel (previously approved accomplishment plan language for FY17 FA 02 and FY18 FA 02).

Will the trails or roads remain and uses continue to be allowed after OHF acquisition - **Yes**

How will maintenance and monitoring be accomplished:

County land departments and the state agencies will maintain and monitor these trails and roads under the respective forest certification standards. Temporary tote roads may be developed pursuant to county forest management plans (previously approved language for FY17 FA 02 and FY18 FA02).

Will new trails or roads be developed or improved as a result of the OHF acquisition - **No**

## Accomplishment Timeline

Activity	Approximate Date Completed
Identify ecological sites relative to costs with Camp Ripley partners	Summer 2019
Discuss sites with local officials and communities	Ongoing
Negotiate acquisitions with willing landowners on identified priority acquisitions	Fall 2019 to 2022
Protect properties	2020 to 2022
Convey protected properties to public entities for long-term management	2020 to 2023

# Budget Spreadsheet

**Total Amount of Request: \$5,933,000**

## Budget and Cash Leverage

BudgetName	LSOHC Request	Anticipated Leverage	Leverage Source	Total
Personnel	\$200,000	\$0		\$200,000
Contracts	\$300,000	\$0		\$300,000
Fee Acquisition w/ PILT	\$5,000,000	\$3,000,000	Department of Defense	\$8,000,000
Fee Acquisition w/o PILT	\$0	\$0		\$0
Easement Acquisition	\$0	\$0		\$0
Easement Stewardship	\$0	\$0		\$0
Travel	\$10,000	\$0		\$10,000
Professional Services	\$120,000	\$0		\$120,000
Direct Support Services	\$28,000	\$0		\$28,000
DNR Land Acquisition Costs	\$25,000	\$0		\$25,000
Capital Equipment	\$0	\$0		\$0
Other Equipment/Tools	\$0	\$0		\$0
Supplies/Materials	\$0	\$0		\$0
DNR IDP	\$250,000	\$0		\$250,000
Total	\$5,933,000	\$3,000,000	-	\$8,933,000

## Personnel

Position	FTE	Over # of years	LSOHC Request	Anticipated Leverage	Leverage Source	Total
MN Representative	0.50	4.00	\$200,000	\$0		\$200,000
Total	0.50	4.00	\$200,000	\$0	-	\$200,000

Amount of Request: \$5,933,000

Amount of Leverage: \$3,000,000

Leverage as a percent of the Request: 50.56%

DSS + Personnel: \$228,000

As a % of the total request: 3.84%

Easement Stewardship: \$0

As a % of the Easement Acquisition: -%

### How did you determine which portions of the Direct Support Services of your shared support services is direct to this program:

The Conservation Fund staff that will be directly involved with this program keep records to track direct time spent on projects by grant source. We have used those past metrics to estimate the costs for this grant request.

### Does the amount in the contract line include R/E work?

Yes, \$300,000 is for R/E work. Restoration will be completed if needed on protected sites, such as bud capping and planting tree seedlings. Entities that will eventually own and manage properties are willing to restore sites if necessary.

### Does the amount in the travel line include equipment/vehicle rental? - Yes

### Explain the amount in the travel line outside of traditional travel costs of mileage, food, and lodging:

No amount in the travel line includes items outside of traditional travel costs of mileage, food and lodging.

### Describe and explain leverage source and confirmation of funds:

The Conservation Fund is the partner of the national Army National Guard under an agreement to utilize federal REPI acquisition funds, which this proposal will leverage, to acquire environmentally-sensitive lands near Camp Ripley. Current approved federal funding for Camp Ripley is \$3 million of the \$90 million REPI budget.

### Does this proposal have the ability to be scalable? - Yes

**Tell us how this project would be scaled and how administrative costs are affected, describe the “economy of scale” and how outputs would change with reduced funding, if applicable:**

Although scalable, this proposal has the potential to leverage more federal funds if more state match funds are secured. Administrative costs would remain similar, but would be reduced slightly if the recommendation is less than requested.

## Output Tables

**Table 1a. Acres by Resource Type**

Type	Wetlands	Prairies	Forest	Habitats	Total
Restore	0	0	0	0	0
Protect in Fee with State PILT Liability	0	0	5,200	0	5,200
Protect in Fee W/O State PILT Liability	0	0	0	0	0
Protect in Easement	0	0	0	0	0
Enhance	0	0	0	0	0
Total	0	0	5,200	0	5,200

**Table 2. Total Requested Funding by Resource Type**

Type	Wetlands	Prairies	Forest	Habitats	Total
Restore	\$0	\$0	\$0	\$0	\$0
Protect in Fee with State PILT Liability	\$0	\$0	\$5,933,000	\$0	\$5,933,000
Protect in Fee W/O State PILT Liability	\$0	\$0	\$0	\$0	\$0
Protect in Easement	\$0	\$0	\$0	\$0	\$0
Enhance	\$0	\$0	\$0	\$0	\$0
Total	\$0	\$0	\$5,933,000	\$0	\$5,933,000

**Table 3. Acres within each Ecological Section**

Type	Metro/Urban	Forest/Prairie	SE Forest	Prairie	Northern Forest	Total
Restore	0	0	0	0	0	0
Protect in Fee with State PILT Liability	0	1,200	0	0	4,000	5,200
Protect in Fee W/O State PILT Liability	0	0	0	0	0	0
Protect in Easement	0	0	0	0	0	0
Enhance	0	0	0	0	0	0
Total	0	1,200	0	0	4,000	5,200

**Table 4. Total Requested Funding within each Ecological Section**

Type	Metro/Urban	Forest/Prairie	SE Forest	Prairie	Northern Forest	Total
Restore	\$0	\$0	\$0	\$0	\$0	\$0
Protect in Fee with State PILT Liability	\$0	\$1,510,000	\$0	\$0	\$4,423,000	\$5,933,000
Protect in Fee W/O State PILT Liability	\$0	\$0	\$0	\$0	\$0	\$0
Protect in Easement	\$0	\$0	\$0	\$0	\$0	\$0
Enhance	\$0	\$0	\$0	\$0	\$0	\$0
Total	\$0	\$1,510,000	\$0	\$0	\$4,423,000	\$5,933,000

**Table 5. Average Cost per Acre by Resource Type**

Type	Wetlands	Prairies	Forest	Habitats
Restore	\$0	\$0	\$0	\$0
Protect in Fee with State PILT Liability	\$0	\$0	\$1,141	\$0
Protect in Fee W/O State PILT Liability	\$0	\$0	\$0	\$0
Protect in Easement	\$0	\$0	\$0	\$0
Enhance	\$0	\$0	\$0	\$0



**Table 6. Average Cost per Acre by Ecological Section**

Type	Metro/Urban	Forest/Prairie	SE Forest	Prairie	Northern Forest
Restore	\$0	\$0	\$0	\$0	\$0
Protect in Fee with State PILT Liability	\$0	\$1,258	\$0	\$0	\$1,106
Protect in Fee W/O State PILT Liability	\$0	\$0	\$0	\$0	\$0
Protect in Easement	\$0	\$0	\$0	\$0	\$0
Enhance	\$0	\$0	\$0	\$0	\$0

**Target Lake/Stream/River Feet or Miles**

0

I have read and understand Section 15 of the Constitution of the State of Minnesota, Minnesota Statute 97A.056, and the Call for Funding Request. I certify I am authorized to submit this proposal and to the best of my knowledge the information provided is true and accurate.

# Parcel List

## **Explain the process used to select, rank and prioritize the parcels:**

Parcels will be prioritized by ecological integrity (with factors that include habitat quality, ecological function, and connection/adjacency with past and planned conservation investments). Once ecological integrity is determined, estimated costs for protection and management (with factors including acquisition costs, restoration costs, and management needs over next ten years) will be ranked. Parcels with high ecological integrity and relatively less cost will be prioritized for protection.

## **Section 1 - Restore / Enhance Parcel List**

No parcels with an activity type restore or enhance.

## **Section 2 - Protect Parcel List**

No parcels with an activity type protect.

## **Section 2a - Protect Parcel with Bldgs**

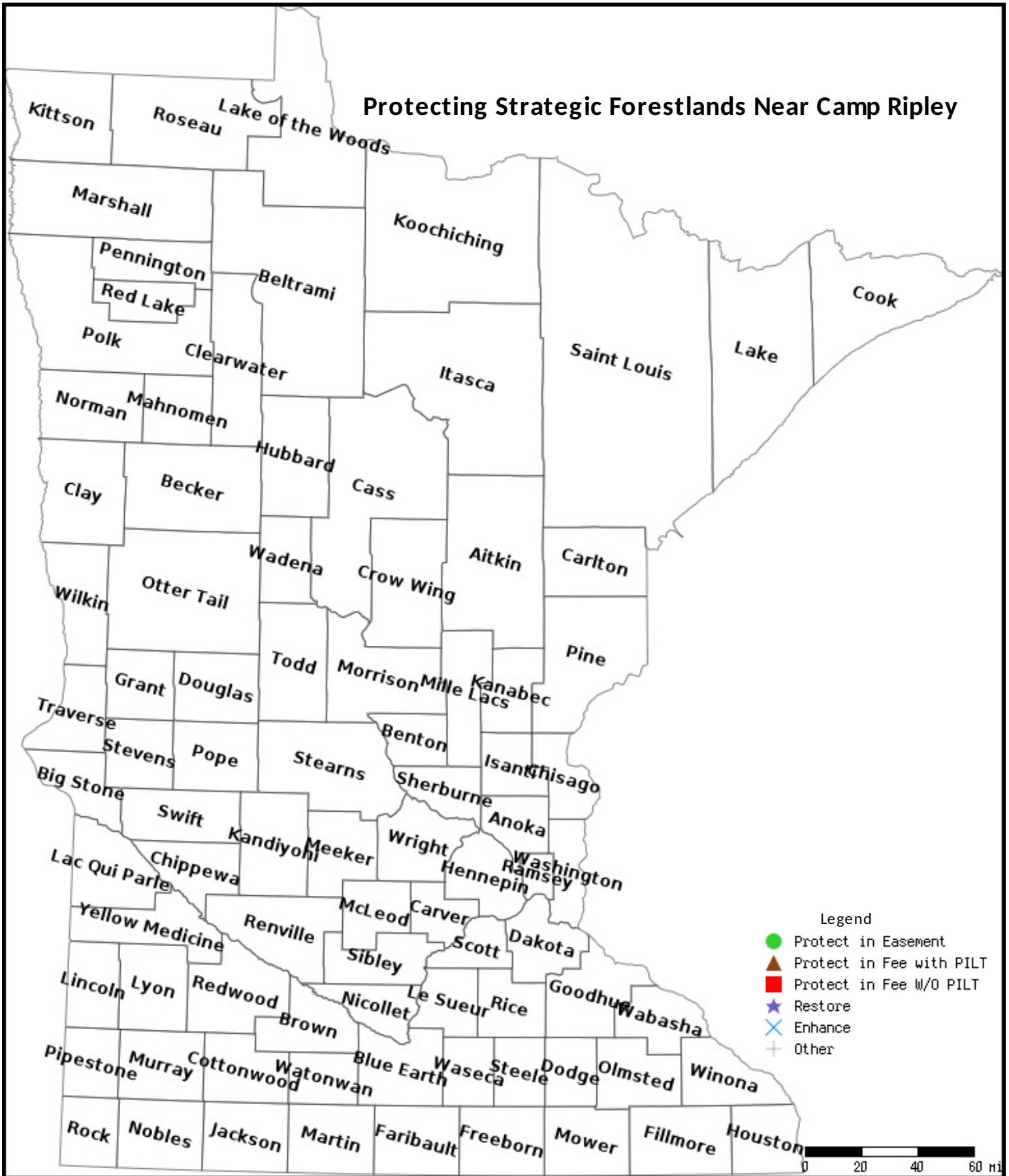
No parcels with an activity type protect and has buildings.

## **Section 3 - Other Parcel Activity**

No parcels with an other activity type.

# Parcel Map

## Protecting Strategic Forestlands Near Camp Ripley



Data Generated From Parcel List





Program Area

The rich natural resources surrounding Camp Ripley draw thousands to the area each year to enjoy the outdoors. The increased development pressure has resulted in splitting larger private forested areas into smaller, subdivided parcels. This fragmentation of the landscape will have damaging effects on both wildlife populations and management needs of the northern forests by public land managers.

This program will protect high quality forested properties in Cass, Crow Wing, and Morrison Counties to prevent conversion of forest habitat to farmland or fragmented, unprotected private ownership near Camp Ripley, Minnesota's largest game refuge at 53,000-acres in size.

The Conservation Fund, with assistance from fellow members of the Camp Ripley Partnership, will identify protection priorities. Projects will weigh the need for permanent protection of quality habitat against the short-term and long-term costs to purchase and manage the site. As land acquisition is the most expensive form of conservation, the goal of this program is to only purchase those parcels that must be purchased to achieve the habitat conservation and recreation goals of the Camp Ripley Partnership.

Projects will be discussed with local officials to ensure that permanent protection and eventual ownership aligns with the conservation goals of the community. The best ownership, whether it is county, state, or local ownership, will be determined depending on what makes the most sense for habitat management needs and to ensure long-term ecological integrity.

The Conservation Fund is the partner of the national Army National Guard under an agreement to utilize federal REPI acquisition funds, which this proposal will leverage, to acquire environmentally-sensitive lands near Camp Ripley. The Conservation Fund will proactively contact and negotiate land protection with willing landowners in coordination with DNR, local conservation groups, and local communities to maximize wildlife populations of statewide and local importance.

### Partners

The Conservation Fund  
The Nature Conservancy  
Camp Ripley Sentinel Landscape

### OHF Funding Requested

\$5.9 million

### REPI Program Federal Match

\$3 million

### Protection Type

Fee Title Acquisition

### Program Outcomes

- Improved connectivity of remaining forestlands
- Builds on previous state and federal habitat investments
- More than 5,000-acres of publicly-accessible wildlife habitat

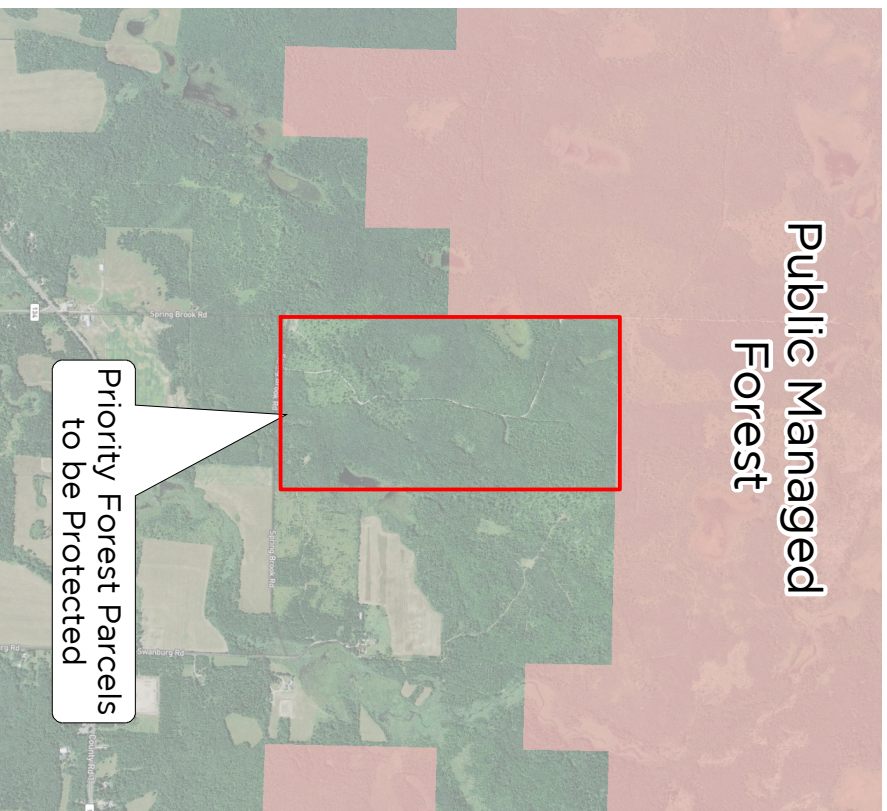
### About The Conservation Fund

*We make conservation work for America. By creating solutions that make environmental and economic sense, we are re-defining conservation to demonstrate its essential role in our future prosperity. Top-ranked for efficiency and effectiveness, we have worked in all 50 states since 1985 to protect more than 7.9 million acres of land.*

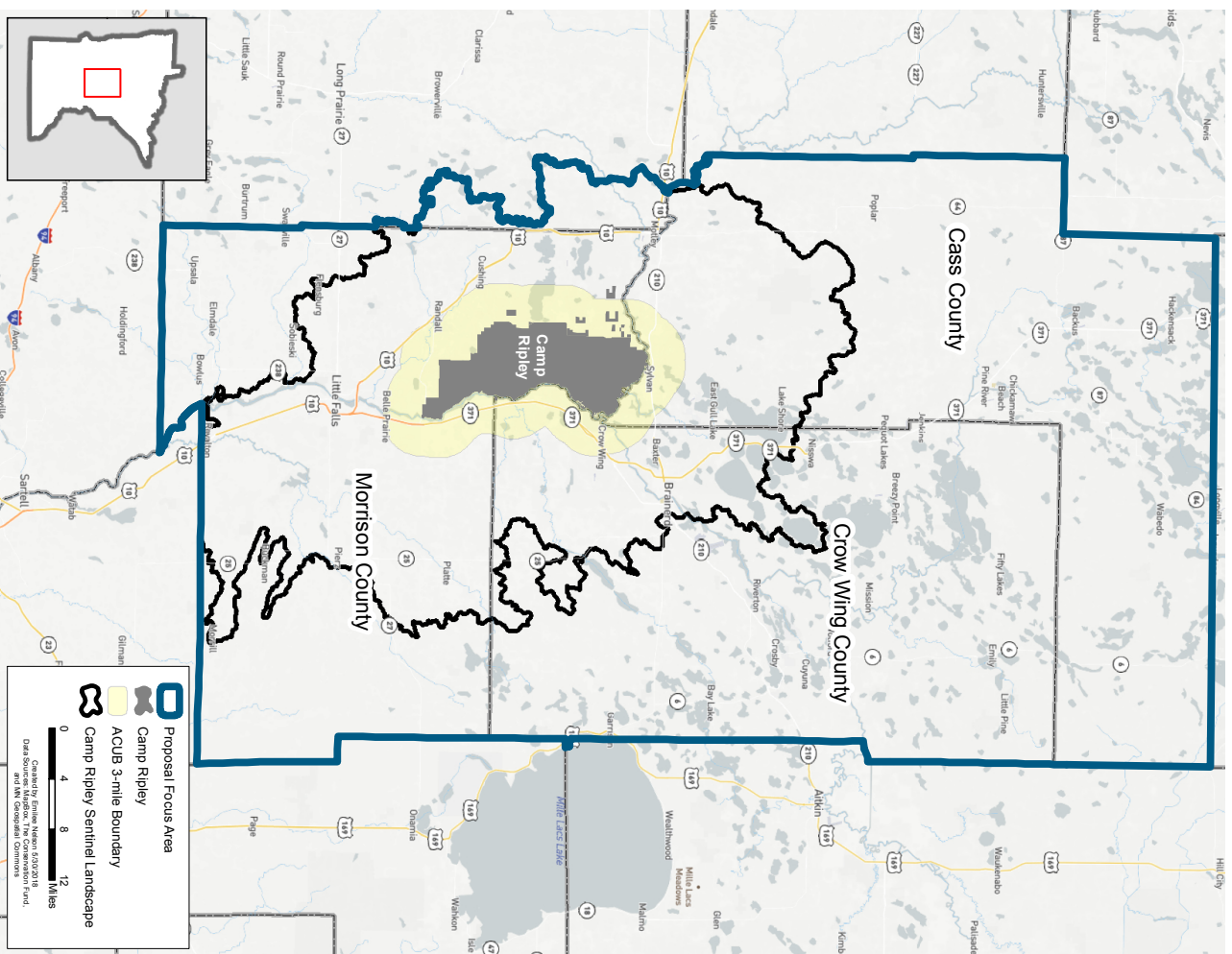
Parcels, like this example below, will create large, intact blocks of wildlife habitat and allow for more effective public forest management.

## Example Project

# Public Managed Forest



## Proposal Area



## **Process for identification of key parcels**

- 1. Partners will identify conservation sites that are important habitat for forest species.**  
(*ex. Golden-winged warbler, white-tailed deer, ruffed grouse, northern long-eared bat, old-growth forests*)
  - a. Science-based Models and Data Sources
    - Species in Greatest Conservation Need – MN Biological Survey database
    - Biodiversity Significance
    - Strategic Wildlife Action Network
    - National Wetlands Inventory
    - North Central Conservation Roundtable Model
    - Stacked Conservation Benefits Model
    - Migratory Species HAPET Models
  
- 2. Then determine the need for public ownership within the conservation site.**
  - a. Decision considerations
    - i. Are there management needs that can only be accomplished via public ownership?
    - ii. Can the recreational goals be accomplished without public ownership?
    - iii. Does public ownership complement local land use goals and plans?
    - iv. Does public ownership of the parcel(s) in question enhance the management goals of adjacent publicly owned parcels?
  
- 3. For each parcel identified for public ownership within the conservation site, estimate total costs of each (*acquisition, restoration, stewardship*). See sample cost analysis sheet.**
  
- 4. A conservation partner is willing to accept the parcel and meets partner objectives.**

**Result: Parcels with more ecological value for the least projected cost will be ranked higher priority for acquisition.**

Conservation Cost Analysis		Example Parcel 1	
----------------------------	--	------------------	--

		Acres	Estimated \$ (10 yrs)
Permanent Protection	Fee title (productive cropland) / acre		\$ -
	Fee title (marginal cropland) / acre		\$ -
	Fee title (forestland) / acre		\$ -
	Easement / acre (productive cropland)		\$ -
	Easement / acre (marginal cropland)		\$ -

**Totals** - \$ -

Temporary Protection	CRP per acre / year		\$ -
	Private Lands Agreements / acre		\$ -

**Totals** - \$ -

Restoration	Wetland / acre		\$ -
	Forest / acre		\$ -
	Upland tile / acre		\$ -
	Grassland / acre		\$ -
	Stream / mile		\$ -

**Totals** - \$ -

Enhancement	Prescribed fire / acre * 2 (every 5 yrs)		\$ -
	Conservation grazing / mile		\$ -
	Haying / acre * 2 (every 5 yrs)		\$ -
	Woody removal (grove) / acre		\$ -
	Woody removal (volunteer) / acre * 2 (every 5 yrs)		\$ -
	Herbicide / acre (intensely infested site)		\$ -
	Herbicide / acre (lightly infested site)		\$ -

**Totals** - \$ -

Stewardship	Personel hours / year		\$ -
	Travel / mile (IRS rate) / year		\$ -
	Build structures/parking areas		\$ -
	PILT/acre/yr	-	\$ -

**Totals** - \$ -

**TOTAL 10-YEAR CONSERVATION COST** \$ -

**COST PER ACRE** \$ -





Sylvan Township

12956 24<sup>th</sup> Avenue SW, Pillager, MN 56473

phone: (218) 746-3652 / fax: (218) 746-3612 / e-mail: [sylvan@brainerd.net](mailto:sylvan@brainerd.net)

May 25, 2018

Todd Holman  
Sentinel Landscapes  
322 Laurel Street  
Brainerd, MN 56401

SUBJECT: Sylvan Township's Letter of Intent

Dear Mr. Holman,

The Town Board of Supervisors would like to thank you for attending their Regular Board Meeting on May 3, 2018 and inviting Kurt Anderson from Minnesota Power, Josh Pennington, Environmental Supervisor from Camp Ripley, and Emilee Nelson, the Non-profit Real-Estate Transaction Agent to attend as well.

After listening to your presentation, drawing Sylvan's attention to some undeveloped parcels in the Township to see if the Town Board would be interested in being an end-use owner with Sentinel Landscapes helping to obtain funding and Camp Ripley's interest in limiting residential encroachment where the Camp has the loudest noises the Town Board moved to support the concept of acquiring these parcels in the future and to send a letter of intent to the agencies involved.

One of the Township's goals listed in Sylvan's Comprehensive Plan is to preserve "Green Space" and this project would definitely agree with the Comprehensive Plan.

We ask that you consider this the Township's letter of intent regarding acquiring the two parcels; 1) Parcel by Kramer Lake (55.06 Acres) and 2) Parcel (80 acres to the North and West on the map. (As shown on the attached map). The Town Board also agreed to have the Sylvan Planning Commission oversee and work with those involved in the acquisition of these parcels, attending meetings and getting updates on the progress of this project, etc.

Our Planning Commission Chair is Dave Johnson, whom you know and his phone number is (cell) 218-251-5468.

Thank you for your interest in Sylvan Township.

Sincerely,



Faith Broberg, Clerk Treasurer  
Sylvan Town Board of Supervisors

CC: Kurt Anderson, Minnesota Power, 30 W. Superior Street, Duluth MN 55802-2191  
Josh Pennington, Environmental Supervisor Camp Ripley 15000 Highway 115, Little  
Falls, MN 56345

✓ Emilee Nelson, The Conservation Fund, 7101 York Avenue S, Suite 340, Edina, MN  
55435

Dave Johnson, Sylvan Planning Commission Chair

Enclosure: Map of (2) two parcels

# Camp Ripley Sentinel Landscape - Sylvan Township



Approx. 80 acres

Approx. 55.06 acres

Camp Ripley

	MN Power Parcels		ACUB Easements
	Tax Forfeit		Camp Ripley
	School Trust Fund		



0 0.09 0.18 0.27 Miles

Created by Emilee Nelson 5/1/2018  
Data Sources: MapBox, The Conservation Fund, and MN Geospatial Commons





DEPARTMENT OF THE ARMY  
OFFICE OF THE SENIOR COMMANDER  
15000 HIGHWAY 115, CAMP RIPLEY  
LITTLE FALLS, MINNESOTA 56345-4173

May 25, 2018

Mr. Bob Anderson  
Chair, Lessard-Sams Outdoor Heritage Council  
State Office Building, Room 95  
100 Dr. Rev. Martin Luther King Jr. Blvd.  
Saint Paul MN 55155

RE: Protecting Strategic Forestlands Near Camp Ripley

Dear Mr. Anderson:

On behalf of Camp Ripley Training Center, I am writing in support of The Conservation Fund's grant proposal that will protect priority forest parcels in Cass, Crow Wing, and Morrison counties within the Camp Ripley Sentinel Landscape. Funding of this proposal will protect the testing and training mission of Camp Ripley by conserving forest parcels and limiting development surrounding Camp Ripley, as well as preventing the conversion of healthy forests that provide wildlife and water quality benefits to local residents and visitors.

We have reviewed the proposal in conjunction with The Conservation Fund and support this approach for protecting key forestlands with the Camp Ripley Sentinel Landscape.

Camp Ripley Training Center is in full support of The Conservation Fund's application and are confident their staff are very capable and will meet the goals of this project. Thank you for your consideration of this proposal.

Sincerely,

A handwritten signature in cursive script that reads "Lowell E. Kruse".

Lowell E. Kruse  
Brigadier General, MN Army National Guard  
Camp Ripley Senior Commander



May 30, 2018

Mr. Bob Anderson  
Chair, Lessard-Sams Outdoor Heritage Council  
State Office Building, Room 95  
100 Dr. Rev. Martin Luther King Jr. Blvd.  
Saint Paul MN 55155



RE: Protecting Strategic Forestlands Near Camp Ripley

Dear Mr. Anderson:

I am writing in support of The Conservation Fund's grant proposal that will protect priority forest parcels in Cass, Crow Wing, and Morrison counties near Camp Ripley and within the Camp Ripley Sentinel Landscape program area. Funding of this proposal will protect strategic forest parcels with the dual benefit of limiting development surrounding Camp Ripley, as well as preventing the conversion of healthy forests that provide wildlife and water quality benefits to residents and visitors.

We have reviewed the proposal in conjunction with The Conservation Fund and support this approach for protecting key forestlands in our county.

We support The Conservation Fund's application and are confident their staff are very capable and will meet the goals of this project. Thank you for considering this request from The Conservation Fund, and please don't hesitate to contact me at [tholman@tnc.org](mailto:tholman@tnc.org) or 612-867-3140 if we may provide additional information.

Thank you for your consideration of this proposal.

Sincerely,



Todd Holman Mississippi Headwaters Program Director

The Nature Conservancy







May 30, 2018

Mr. Bob Anderson  
Chair, Lessard-Sams Outdoor Heritage Council  
State Office Building, Room 95  
100 Dr. Rev. Martin Luther King Jr. Blvd.  
Saint Paul MN 55155

RE: Protecting Strategic Forestlands near Camp Ripley

---

Dear Mr. Anderson:

On behalf of Great River Greening, we are writing in support of The Conservation Fund's grant proposal that will protect priority forest parcels in Cass, Crow Wing, and Morrison counties near Camp Ripley. Funding of this proposal will protect strategic forest parcels with the dual benefit of limiting development surrounding Camp Ripley, as well as preventing the conversion of healthy forests that provide wildlife and water quality benefits to local residents and visitors.

Since 2016, Great River Greening has been working with the Camp Ripley partners to protect, restore and enhance lands together with enthusiastic landowners involved in this successful and locally-led conservation effort. This proposal will ramp up our efforts as a partnership to acquire lands that will create connection corridors between previous easement and fee acquisitions, improve the public's access for hunting and recreation, and leverage federal Readiness and Environmental Protection Integration (REPI) funding. These dollars are nationally competitive and we have the opportunity to bring those funds to central Minnesota if this proposal is funded.

We support The Conservation Fund's application and are confident their staff are very capable and will meet the goals of this project. Thank you for considering this request from The Conservation Fund, and please don't hesitate to contact me at [shuckett@greatrivergreening.org](mailto:shuckett@greatrivergreening.org) or 651.272.3994 if I may provide additional information.

Thank you for your consideration of this proposal.

Sincerely,

Steven Huckett, PhD  
Director of Conservation Programs





# United States Department of the Interior



## U.S. FISH AND WILDLIFE SERVICE

Crane Meadows National Wildlife Refuge  
19502 Iris Road  
Little Falls, MN 55345

May 31<sup>st</sup>, 2018

Mr. Bob Anderson  
Chair, Lessard-Sams Outdoor Heritage Council  
State Office Building, Room 95  
100 Dr. Rev. Martin Luther King Jr. Blvd.  
Saint Paul MN 55155

RE: Protecting Strategic Forestlands Near Camp Ripley

Dear Mr. Anderson:

On behalf of Crane Meadows National Wildlife Refuge, we are writing in support of The Conservation Fund's grant proposal that will protect priority forest parcels in Cass, Crow Wing, and Morrison counties near Camp Ripley. Funding of this proposal will protect strategic forest parcels with the dual benefit of limiting development surrounding Camp Ripley, as well as preventing the conversion of healthy forests that provide wildlife and water quality benefits to local residents and visitors.

Since 2013, Crane Meadows National Wildlife Refuge and the U.S. Fish and Wildlife Service has been working with the Camp Ripley partners to protect, restore and enhance lands together with enthusiastic landowners involved in this successful and locally-led conservation effort. This proposal will ramp up our efforts as a partnership to acquire lands that will create connection corridors between previous easement and fee acquisitions, improve the public's access for hunting and recreation, and leverage federal Readiness and Environmental Protection Integration (REPI) funding. These dollars are nationally competitive and we have the opportunity to bring those funds to central Minnesota if this proposal is funded.

We support The Conservation Fund's application and are confident their staff are very capable and will meet the goals of this project. Thank you for considering this request from The Conservation Fund, and please don't hesitate to contact me at [steve\\_karel@fws.gov](mailto:steve_karel@fws.gov) or 763-389-3323 if we may provide additional information.

Thank you for your consideration of this proposal.

Sincerely,

Steve Karel  
Project Leader  
Crane Meadows National Wildlife Refuge