



Lessard-Sams Outdoor Heritage Council

Laws of Minnesota 2018 Accomplishment Plan

Date: October 25, 2017

Program or Project Title: Camp Ripley Sentinel Landscape ACUB Protection Program - Phase VII

Funds Recommended: \$ 1,229,000

Manager's Name: Helen McLennan

Title: Director

Organization: Morrison SWCD

Address: 16776 Heron Rd

City: Little Falls, MN 56345

Office Number: 320-616-2479

Email: helen.mclennan@mn.nacdnet.net

Website: morrisonswcd.org

Legislative Citation: ML 2018, Ch. X, Art. 1, Sec. 2, subd XX

Appropriation Language:

County Locations: Crow Wing

Regions in which work will take place:

- Forest / Prairie Transition
- Northern Forest

Activity types:

- Protect in Easement
- Protect in Fee

Priority resources addressed by activity:

- Forest
- Wetlands

Abstract:

This Phase 7 continuation of the RIM Camp Ripley Sentinel Landscap ACUB Partnership will utilize permanent conservation easements to acquire 440 acres of high quality habitat along the Crow Wing, Gull, Nokasippi, and Mississippi River corridors. Approximately 7 easements will be secured within the project area. BWSR will utilize the RIM Easement process in partnership with the Morrison SWCD to secure easements on sites within Crow Wing, Cass, and Morrison Counties during the appropriation term. In addition The Conservation Fund will acquire 117-ac. in fee from Tiller Corp. then transfer to DNR Little Nokasippi River WMA

Design and scope of work:

The purpose of this initiative is to protect approximately 440 acres of fish, game, migratory bird, and forest habitat along the Crow Wing, Gull, Nokasippi, and Mississippi River corridors within an approximately five mile radius of Camp Ripley. Phase 7 of this successful project plans to secure approximately 7 permanent conservation easements, utilizing partnerships with Camp Ripley, a State Game Refuge, BWSR, and the Morrison SWCD. Easement acquisition will occur in those portions of Morrison, Crow Wing, and Cass County that lie within this five mile radius.

Easement acquisition in this area will protect these river corridors, which are critical to the general public for fishing, hunting, and recreational opportunities.

Fee acquisition is focused upon the approximately 125-acre Tiller Tract that would be a critical addition to the Little Nokasippi River WMA. This parcel, part of which was a gravel pit, is an inholding that limits the ability to sustainably manage the WMA as long as it is in private ownership. No OHF funds are requested at this time. The City of Fort Ripley has applied for assistance to move Over the Hill Road southward. The ~2.5 acre gravel pit will need restoration and it is anticipated that other funding sources may be used once the property is under state ownership, or that some of the gravel pit be developed into WMA parking area. The remainder of the property is forested.

Parcels are targeted that have quality existing habitat, protect corridors and large habitat complexes and reduce future fragmentation. Evaluation criteria include ecological and habitat factors for resident and migratory wildlife species. The target area has been limited to ensure a concentration of easement acquisitions that provide landscape scale benefits and will allow for protection of some very large forested parcels that are in imminent threat of conversion.

The forested region of these three counties is where agriculture transitions to state forested lands. Thousands of acres just outside of this work area are being converted from forest to annual cropping, primarily for potato production. Forests not only provide critical wildlife habitat for furbearing animals and turkeys, the forests lessen the impact of water quality contamination from agricultural practices. This region of the state, most specifically Morrison County, is the fastest growing county in the state for the loss of grazing land to annual cropping. The loss of forests would exaggerate that problem even more. Drinking water standards in the area are also in jeopardy with the increase in irrigation and large scale livestock operations, so protecting the forested lands has become a critical issue.

In 2016, Camp Ripley was designated as a federal Sentinel Landscape, one of six in the nation. This designation by both State and Federal entities coordinates strategies to protect this landscape. Many agencies will be identifying their scope of priorities within the Sentinel Landscape ten-mile boundary. As one of the strategies of this Sentinel Landscape effort, this proposal seizes the opportunity to expand the Camp Ripley ACUB borders to a five miles for easements.

How does the request address MN habitats that have: historical value to fish and wildlife, wildlife species of greatest conservation need, MN County Biological Survey data, and/or rare, threatened and endangered species inventories:

These lands provide habitat for several Species of Greatest Conservation Need (SGCN), which include the Northern Long-Eared Bat (threatened), Bald Eagle, and Gray Wolf. There are a total of 65 SGCN found on Camp Ripley. Camp Ripley is home to one of the southern-most wolf populations in Minnesota and the state's highest population of Red-shouldered Hawks. In a 2006 study at Camp Ripley, it was found that the amount of mature deciduous forest was positively associated with Red-shouldered Hawk nest sites.

MN DNR 2009 and 2010 fish surveys on the Crow Wing River (Staples to confluence of Mississippi) and Mississippi River (Brainerd to Little Falls) indicate high quality fish communities of Walleye, Muskellunge, and Small-mouth Bass.

The majority of the project area falls within the Anoka Sand Plain and the Hardwood Hills Ecological Subsections. Currently much of the Hardwood Hills subsection is farmed. Important areas of forest and prairie exist, but they are small and fragmented. Urban development and agriculture occur in 1/3 of the Anoka Sand Plain. This project seeks to protect remaining lands from the threat of development or agricultural pressure, as well as sustain the current connectivity of these habitats.

Describe the science based planning and evaluation model used:

Parcels are targeted that have quality existing habitat, protect corridors and large habitat complexes and will reduce future fragmentation. Evaluation criteria include ecological and habitat factors for resident and migratory wildlife species. The target area has been limited to ensure a concentration of easement acquisitions that provide landscape scale benefits. The target work area also contains high value existing habitat and public access via existing WMAs that are being buffered with easements.

The MN County Biological survey has identified several native plant communities within this project area that are vulnerable to extirpation, as well as sites with existing high biodiversity. Most of these identified areas lie within the northern extent of this 5 mile boundary, which also happens to face high development pressure due to its proximity to the cities of Baxter & Brainerd. Protecting these parcels is a high priority for the ACUB Program.

Which sections of the Minnesota Statewide Conservation and Preservation Plan are applicable to this program:

- H1 Protect priority land habitats
- H2 Protect critical shoreland of streams and lakes

Which other plans are addressed in this program:

- Minnesota Forest Resource Council Landscape Plans
- Outdoor Heritage Fund: A 25 Year Framework

Which LSOHC section priorities are addressed in this program:

Forest / Prairie Transition:

- Protect, enhance, and restore wild rice wetlands, shallow lakes, wetland/grassland complexes, aspen parklands, and shoreland that provide critical habitat for game and nongame wildlife

Northern Forest:

- Provide access to manage habitat on landlocked public properties or protect forest land from parcelization and fragmentation through fee acquisition, conservation or access easement

Relationship to other funds:

- Environmental and Natural Resource Trust Fund
- Clean Water Fund
- DOD and NGB

Describe the relationship of the funds:

Due to the success of the Camp Ripley Partnership, the MN Legislature passed the Sentinel Landscape Designation in 2015. This law will formalize a process that we have used for years to enhance the effect of the ACUB Program and it will complement a national direction of the Department of Defense. Establishing Sentinel Landscapes in state law enabled the federal Sentinel Landscape designation in 2016 allowing the program to better compete for federal funding from agencies beyond just the Department of Defense. It will also better align federal and state programs that could support private landowners in a Sentinel Landscape. This Sentinel Landscapes can be defined as preserving the working and rural character of our private lands, which is important for both national defense and conservation priorities. This is the first such designation of a National Guard facility and only the 6th designated Sentinel Landscape in the country. This Camp Ripley Sentinel Landscape partnership has secured \$2.8M federal funding through the Regional Conservation Partnership Program of NRCS for EQIP, CSP and Healthy Forest Reserve Program starting 2017.

The SWCD offices in Crow Wing and Morrison Counties have applied for Clean Water Funds and LCCMR funds to assist landowners with forest stewardship planning, nutrient management planning, and most importantly drainage management. The counties utilize all resources available to enhance the easement properties. Our additional partners and efforts include USDA Natural Resources Conservation Service (NRCS), MN Forest Resource Council, local water planning, county planning and zoning offices, and US Fish and Wildlife Service.

The Farm Bill Assistance Partnership (FBAP) with BWSR, DNR, PF, NRCS, MASWCD, and SWCDs as primary partners, provides funding to SWCDs to utilize technicians to promote the conservation provisions of the Federal Farm Bill and other conservation program opportunities to private landowners. The Environment and Natural Resources Trust Fund (ENRTF) via LCCMR recommendations provided \$1.0M in FY10-11, \$625,000 in FY12-13, \$3.0M in FY 14-15 and \$1.0M in FY 16-17.

How does this program include leverage in funds or other effort to supplement any OHF appropriation:

This proposal seeks to build on the previous successes that OHF Phases 1-6 were able to provide, building upon the connectivity and habitat protection efforts of past appropriations. Furthermore, from 2010 through 2015, Camp Ripley partnership had huge success with the LSOHC Little Nokasippi WMA project. The partnership enrolled 3,074.7 acres into conservation easements, increased public access to the WMA by 262 acres, and buffered the WMA from future development. This project will utilize lessons learned from the 2010, 2011, 2012, 2013, 2014 and 2015 LSOHC grants and will complement the MN DNR Gull River WMA.

Since 2004, the Department of Defense (DOD) and National Guard Bureau (NGB) have been working with willing landowners to limit incompatible land uses within the ACUB area. The federal easement program is designed to preserve the working and rural character of these private lands, while considering habitat benefits or protection. The state Sentinel Landscape designation in 2015 and federal Sentinel Landscape designation in 2016 will coordinate and leverage protection and practices within the Camp Ripley Sentinel Landscape project area. CRSL federal funding also supported \$150,000 for a coordinator position.

Per MS 97A.056, Subd. 24, Any state agency or organization requesting a direct appropriation from the OHF must inform the LSOHC at the time of the request for funding is made, whether the request is supplanting or is a substitution for any previous funding that was not from a legacy fund and was used for the same purpose:

This request does not supplant or substitute any previous funding that was not from a legacy fund and was used for the same purpose.

Describe the source and amount of non-OHF money spent for this work in the past:

Appropriation Year	Source	Amount
2007 - Present	Department of Defense (DOD)/National Guard Bureau (NGB) to BWSR/Morrison SWCD	\$31,560,176
2010 - Present	LCCMR	\$160,000
2018	Department of Defense (DOD)/National Guard Bureau (NGB) to TCF	\$2,200,000

How will you sustain and/or maintain this work after the Outdoor Heritage Funds are expended:

Once a RIM easement is acquired, BWSR is responsible for monitoring and enforcement into perpetuity. The BWSR partners with local SWCDs to carry-out oversight, monitoring and enforcement of its conservation easements. Easements are monitored for the first five consecutive years beginning in the year after the easement is recorded. Thereafter, on-site monitoring is performed every three years and compliance checks are performed in the other two years. SWCDs report to BWSR on each site inspection conducted and partners' staff document findings. A non-compliance procedure is implemented when potential violations or problems are identified.

Perpetual monitoring and stewardship costs have been calculated at \$6,500 per easement. This value is based on using local SWCD staff for monitoring and landowner relations and existing enforcement authorities. The amount listed for Easement Stewardship covers costs of the SWCD regular monitoring, BWSR oversight, and enforcement.

The Tiller Tract will be included in the management of the Little Nokasippi River WMA. The city/county road on the parcel is a source of erosion into the river. Camp Ripely will coordinate with the city of Fort Ripley to move the road back from the river as additional project leverage, not an OHF cost.

Explain the things you will do in the future to maintain project outcomes:

Year	Source of Funds	Step 1	Step 2	Step 3
2018-Ongoing	Stewardship Account	Compliance Checks first 5 years then every 3rd year.	Corrective actions of any violations.	Enforcement Action taken by MN Attorney Generals office.
2018-Ongoing	Landowner Responsibility	Maintain compliance with easement terms.		
2018-Ongoing	Camp Ripley	Road relocation & initial restoration		

Activity Details:

If funded, this program will meet all applicable criteria set forth in MS 97A.056 - **Yes**

Will there be planting of corn or any crop on OHF land purchased or restored in this program - **No**

Will local government approval be sought prior to acquisition - **No**

All counties within the Camp Ripley Sentinel Landscape have been briefed directly and have of record resolutions of support for the ACUB RIM easement program. The fee acquisition site was approved by Crow Wing County resolution as a boundary approval when the Little Nokasippi WMA was first developed/started in 2006. Since both programs (ACUB-RIM easement and DNR WMA) began, biennial public meetings, multiple field trip events and celebrations have occurred that invited public and local official participation. The Camp Ripley Sentinel Landscape program is well embraced by local government and by state and federal partners as well.

Is the land you plan to acquire (fee title) free of any other permanent protection - **Yes**

Is this land currently open for hunting and fishing - **No**

Will the land be open for hunting and fishing after completion - **Yes**

The fee acquisition of the Tiller site will be added to the DNR Little Nokasippi WMA and will be managed open to the public per WMA Management Plan.

Who will eventually own the fee title land?

The Minnesota DNR will eventually own the fee title land.

Will the eased land be open for public use - **No**

Is the land you plan to acquire (easement) free of any other permanent protection - **Yes**

Who will manage the easement?

BWSR will be the responsible party for monitoring and enforcing easements.

Who will be the easement holder?

BWSR will be the easement holder.

Are there currently trails or roads on any of the acquisitions on the parcel list - **Yes**

Describe the types of trails or roads and the allowable uses:

This appropriation is funding a program that will have a parcel list identified at a later time. Roads or trails are typically excluded from the easement area if they serve no beneficial purpose to easement maintenance, monitoring, or enforcement. Though uncommon, there could be a potential for new trails to be developed, if they contribute to easement maintenance or benefit the easement site (e.g. firebreaks, berm maintenance, etc). Unauthorized trails identified during the monitoring process are in violation of the easement.

The Tiller site has road access to the city of Fort Ripley cemetery, used by the city. The plan is to work with Tiller to donate that southerly 6-acres to the city of Fort Ripley and not include that in the WMA tract. The rest of the Tiller property has been privately owned and posted for no trespassing to date. No trails or trail corridors are planned for the site.

Will the trails or roads remain and uses continue to be allowed after OHF acquisition - **Yes**

How will maintenance and monitoring be accomplished:

The easements secured under this project will be managed as part of the MN Board of Water and Soil Resources (BWSR) RIM Reserve Program that has over 6,500 easements currently in place. Easements are monitored annually for each of the first 5 years and then every 3rd year after that. BWSR, in cooperation with Soil and Water Conservation Districts (SWCD), implement a stewardship process to track, monitor quality and assure compliance with easement terms.

Under the terms of the Reinvest In Minnesota (RIM) Easement Program, landowners are required to maintain compliance with the easement. A conservation plan is developed with the landowner and maintained as part of each easement. Basic easement compliance costs are borne by the landowner, periodic enhancements may be cost shared from a variety of sources.

The Tiller site acquisition will be maintained and actively managed by DNR WMA staff, Brainerd area office.

Will new trails or roads be developed or improved as a result of the OHF acquisition - **Yes**

Describe the types of trails or roads and the allowable uses:

Though uncommon, there could be a potential for new trails to be developed, if they contribute to easement maintenance or benefit the easement site (e.g. firebreaks, berm maintenance, etc). Though uncommon, there could be a potential for new trails to be developed, if they contribute to easement maintenance or benefit the easement site (e.g. firebreaks, berm maintenance, etc). Unauthorized trails identified during the monitoring process are in violation of the easement.

The same answer would apply to the Tiller site acquisition. Only as a function of WMA management would fire breaks be developed or similar management needs.

How will maintenance and monitoring be accomplished:

The easements secured under this project will be managed as part of the MN Board of Water and Soil Resources (BWSR) RIM Reserve Program that has over 6,500 easements currently in place. Easements are monitored annually for each of the first 5 years and then every 3rd year after that. BWSR, in cooperation with Soil and Water Conservation Districts (SWCD), implement a stewardship process to track, monitor quality and assure compliance with easement terms.

Under the terms of the Reinvest In Minnesota (RIM) Easement Program, landowners are required to maintain compliance with the easement. A conservation plan is developed with the landowner and maintained as part of each easement. Basic easement compliance costs are borne by the landowner, periodic enhancements may be cost shared from a variety of sources.

The Tiller site acquisition would be managed and monitored by DNR WMA staff, Brainerd office

Accomplishment Timeline:

Activity	Approximate Date Completed
Obtain applications from eligible landowners	June 30, 2018
Allocations to specific parcels	July 30, 2018
Easements recorded	June 30, 2021
Final report submitted	November 1, 2021
Purchase of Tiller Tract and transfer into DNR ownership	August 2018

Date of Final Report Submission: 11/1/2021

Federal Funding:

Do you anticipate federal funds as a match for this program - **Yes**

Are the funds confirmed - **Yes**

What are the types of funds?

Cash Match - \$412500

In-Kind Match - \$

Other -

Outcomes:

Programs in the northern forest region:

- Forestlands are protected from development and fragmentation A summary of the total of wetland acres and associated forest land secured under easement through this appropriation will be reported. On-site inspections are performed every three years and compliance checks are performed in the other two years to ensure maintained outcomes. Sustained habitat availability within a certain region is expected to maintain the carrying capacity of associated wildlife within that region. This would affect both game and nongame species. We expect sustained populations of endangered, threatened, special concern and game species as these easements are secured.

Programs in forest-prairie transition region:

- Rivers and streams provide corridors of habitat including intact areas of forest cover in the east and large wetland/upland complexes in the west A summary of the total of wetland acres and associated forest land secured under easement through this appropriation will be reported. On-site inspections are performed every three years and compliance checks are performed in the other two years to ensure maintained outcomes. Sustained habitat availability within a certain region is expected to maintain the carrying capacity of associated wildlife within that region. This would affect both game and nongame species. We expect sustained populations of endangered, threatened, special concern and game species as these easements are secured.

Budget Spreadsheet

Budget reallocations up to 10% do not require an amendment to the Accomplishment Plan

How will this program accommodate the reduced appropriation recommendation from the original proposed requested amount

Acquisition of the Tiller tract is still feasible through the reduced recommendation amount. Approximately 1/3 of the originally proposed easements and acres will be protected with this appropriation, prorating from 22 easements on 1,320 acres to approximately 7 easements on 440 acres.

Total Amount of Request: \$ 1229000

Budget and Cash Leverage

BudgetName	LSOHC Request	Anticipated Leverage	Leverage Source	Total
Personnel	\$98,900	\$0		\$98,900
Contracts	\$0	\$0		\$0
Fee Acquisition w/ PILT	\$137,500	\$412,500	Department of Defense	\$550,000
Fee Acquisition w/o PILT	\$0	\$0		\$0
Easement Acquisition	\$852,200	\$0		\$852,200
Easement Stewardship	\$45,500	\$0		\$45,500
Travel	\$1,800	\$0		\$1,800
Professional Services	\$54,000	\$0		\$54,000
Direct Support Services	\$30,700	\$0		\$30,700
DNR Land Acquisition Costs	\$5,000	\$0		\$5,000
Capital Equipment	\$0	\$0		\$0
Other Equipment/Tools	\$2,600	\$0		\$2,600
Supplies/Materials	\$800	\$0		\$800
DNR IDP	\$0	\$0		\$0
Total	\$1,229,000	\$412,500		\$1,641,500

Personnel

Position	FTE	Over # of years	LSOHC Request	Anticipated Leverage	Leverage Source	Total
State Director	0.15	1.00	\$30,000	\$0		\$30,000
Program Management	0.13	3.50	\$50,100	\$0		\$50,100
Easement Processing	0.09	3.00	\$18,800	\$0		\$18,800
Total	0.37	7.50	\$98,900	\$0		\$98,900

Budget and Cash Leverage by Partnership

BudgetName	Partnership	LSOHC Request	Anticipated Leverage	Leverage Source	Total
Personnel	Morrison SWCD	\$0	\$0		\$0
Contracts	Morrison SWCD	\$0	\$0		\$0
Fee Acquisition w/ PILT	Morrison SWCD	\$0	\$0		\$0
Fee Acquisition w/o PILT	Morrison SWCD	\$0	\$0		\$0
Easement Acquisition	Morrison SWCD	\$0	\$0		\$0
Easement Stewardship	Morrison SWCD	\$0	\$0		\$0
Travel	Morrison SWCD	\$0	\$0		\$0
Professional Services	Morrison SWCD	\$39,000	\$0		\$39,000
Direct Support Services	Morrison SWCD	\$0	\$0		\$0
DNR Land Acquisition Costs	Morrison SWCD	\$0	\$0		\$0
Capital Equipment	Morrison SWCD	\$0	\$0		\$0
Other Equipment/Tools	Morrison SWCD	\$0	\$0		\$0
Supplies/Materials	Morrison SWCD	\$0	\$0		\$0
DNR IDP	Morrison SWCD	\$0	\$0		\$0
Total		\$39,000	\$0		\$39,000

BudgetName	Partnership	LSOHC Request	Anticipated Leverage	Leverage Source	Total
Personnel	The Conservation Fund	\$30,000	\$0		\$30,000
Contracts	The Conservation Fund	\$0	\$0		\$0
Fee Acquisition w/ PILT	The Conservation Fund	\$137,500	\$412,500	Department of Defense	\$550,000
Fee Acquisition w/o PILT	The Conservation Fund	\$0	\$0		\$0
Easement Acquisition	The Conservation Fund	\$0	\$0		\$0
Easement Stewardship	The Conservation Fund	\$0	\$0		\$0
Travel	The Conservation Fund	\$0	\$0		\$0
Professional Services	The Conservation Fund	\$15,000	\$0		\$15,000
Direct Support Services	The Conservation Fund	\$19,500	\$0		\$19,500
DNR Land Acquisition Costs	The Conservation Fund	\$5,000	\$0		\$5,000
Capital Equipment	The Conservation Fund	\$0	\$0		\$0
Other Equipment/Tools	The Conservation Fund	\$0	\$0		\$0
Supplies/Materials	The Conservation Fund	\$0	\$0		\$0
DNR IDP	The Conservation Fund	\$0	\$0		\$0
Total		\$207,000	\$412,500		\$619,500

Personnel - The Conservation Fund

Position	FTE	Over # of years	LSOHC Request	Anticipated Leverage	Leverage Source	Total
State Director	0.15	1.00	\$30,000	\$0		\$30,000
Total	0.15	1.00	\$30,000	\$0		\$30,000

BudgetName	Partnership	LSOHC Request	Anticipated Leverage	Leverage Source	Total
Personnel	BWSR	\$68,900	\$0		\$68,900
Contracts	BWSR	\$0	\$0		\$0
Fee Acquisition w/ PILT	BWSR	\$0	\$0		\$0
Fee Acquisition w/o PILT	BWSR	\$0	\$0		\$0
Easement Acquisition	BWSR	\$852,200	\$0		\$852,200
Easement Stewardship	BWSR	\$45,500	\$0		\$45,500
Travel	BWSR	\$1,800	\$0		\$1,800
Professional Services	BWSR	\$0	\$0		\$0
Direct Support Services	BWSR	\$11,200	\$0		\$11,200
DNR Land Acquisition Costs	BWSR	\$0	\$0		\$0
Capital Equipment	BWSR	\$0	\$0		\$0
Other Equipment/Tools	BWSR	\$2,600	\$0		\$2,600
Supplies/Materials	BWSR	\$800	\$0		\$800
DNR IDP	BWSR	\$0	\$0		\$0
Total		\$983,000	\$0		\$983,000

Personnel - BWSR

Position	FTE	Over # of years	LSOHC Request	Anticipated Leverage	Leverage Source	Total
Program Management	0.13	3.50	\$50,100	\$0		\$50,100
Easement Processing	0.09	3.00	\$18,800	\$0		\$18,800
Total	0.22	6.50	\$68,900	\$0		\$68,900

Amount of Request: \$1,229,000

Amount of Leverage: \$412,500

Leverage as a percent of the Request: 33.56%

DSS + Personnel: \$129,600

As a % of the total request: 10.55%

How did you determine which portions of the Direct Support Services of your shared support services is direct to this program:

BWSR calculates direct support services costs that are directly related to and necessary for each request based on the type of work

being done. The Conservation Fund budgets the total of DSS and professional services as 9% of purchase price, but will only bill for actual hours spent on the project.

Describe and explain leverage source and confirmation of funds:

There is no direct leverage for this project. This project would contribute to the goals of the Sentinel Landscape initiative. However, to date the Federal Government has contributed over \$33,000,000 to other protection projects within the Sentinel Landscape project area.

Output Tables

Table 1a. Acres by Resource Type

Type	Wetlands	Prairies	Forest	Habitats	Total
Restore	0	0	0	0	0
Protect in Fee with State PILT Liability	0	0	125	0	125
Protect in Fee W/O State PILT Liability	0	0	0	0	0
Protect in Easement	44	0	396	0	440
Enhance	0	0	0	0	0
Total	44	0	521	0	565

Table 2. Total Funding by Resource Type

Type	Wetlands	Prairies	Forest	Habitats	Total
Restore	\$0	\$0	\$0	\$0	\$0
Protect in Fee with State PILT Liability	\$0	\$0	\$207,000	\$0	\$207,000
Protect in Fee W/O State PILT Liability	\$0	\$0	\$0	\$0	\$0
Protect in Easement	\$102,200	\$0	\$919,800	\$0	\$1,022,000
Enhance	\$0	\$0	\$0	\$0	\$0
Total	\$102,200	\$0	\$1,126,800	\$0	\$1,229,000

Table 3. Acres within each Ecological Section

Type	Metro Urban	ForestPrairie	SEForest	Prairie	N Forest	Total
Restore	0	0	0	0	0	0
Protect in Fee with State PILT Liability	0	125	0	0	0	125
Protect in Fee W/O State PILT Liability	0	0	0	0	0	0
Protect in Easement	0	220	0	0	220	440
Enhance	0	0	0	0	0	0
Total	0	345	0	0	220	565

Table 4. Total Funding within each Ecological Section

Type	Metro Urban	ForestPrairie	SEForest	Prairie	N Forest	Total
Restore	\$0	\$0	\$0	\$0	\$0	\$0
Protect in Fee with State PILT Liability	\$0	\$207,000	\$0	\$0	\$0	\$207,000
Protect in Fee W/O State PILT Liability	\$0	\$0	\$0	\$0	\$0	\$0
Protect in Easement	\$0	\$511,000	\$0	\$0	\$511,000	\$1,022,000
Enhance	\$0	\$0	\$0	\$0	\$0	\$0
Total	\$0	\$718,000	\$0	\$0	\$511,000	\$1,229,000

Table 5. Average Cost per Acre by Resource Type

Type	Wetlands	Prairies	Forest	Habitats
Restore	\$0	\$0	\$0	\$0
Protect in Fee with State PILT Liability	\$0	\$0	\$1656	\$0
Protect in Fee W/O State PILT Liability	\$0	\$0	\$0	\$0
Protect in Easement	\$2323	\$0	\$2323	\$0
Enhance	\$0	\$0	\$0	\$0

Table 6. Average Cost per Acre by Ecological Section

Type	Metro/Urban	Forest/Prairie	SE Forest	Prairie	Northern Forest
Restore	\$0	\$0	\$0	\$0	\$0
Protect in Fee with State PILT Liability	\$0	\$1656	\$0	\$0	\$0
Protect in Fee W/O State PILT Liability	\$0	\$0	\$0	\$0	\$0
Protect in Easement	\$0	\$2323	\$0	\$0	\$2323
Enhance	\$0	\$0	\$0	\$0	\$0

Target Lake/Stream/River Feet or Miles

2.7 miles

Parcel List

For restoration and enhancement programs ONLY: Managers may add, delete, and substitute projects on this parcel list based upon need, readiness, cost, opportunity, and/or urgency so long as the substitute parcel/project forwards the constitutional objectives of this program in the Project Scope table of this accomplishment plan. The final accomplishment plan report will include the final parcel list.

Section 1 - Restore / Enhance Parcel List

No parcels with an activity type restore or enhance.

Section 2 - Protect Parcel List

Crow Wing

Name	TRDS	Acres	Est Cost	Existing Protection?	Hunting?	Fishing?
Tiller	04332226	59	\$100,000	No	Full	Full
Tiller	04332227	65	\$107,000	No	Full	Full

Section 2a - Protect Parcel with Bldgs

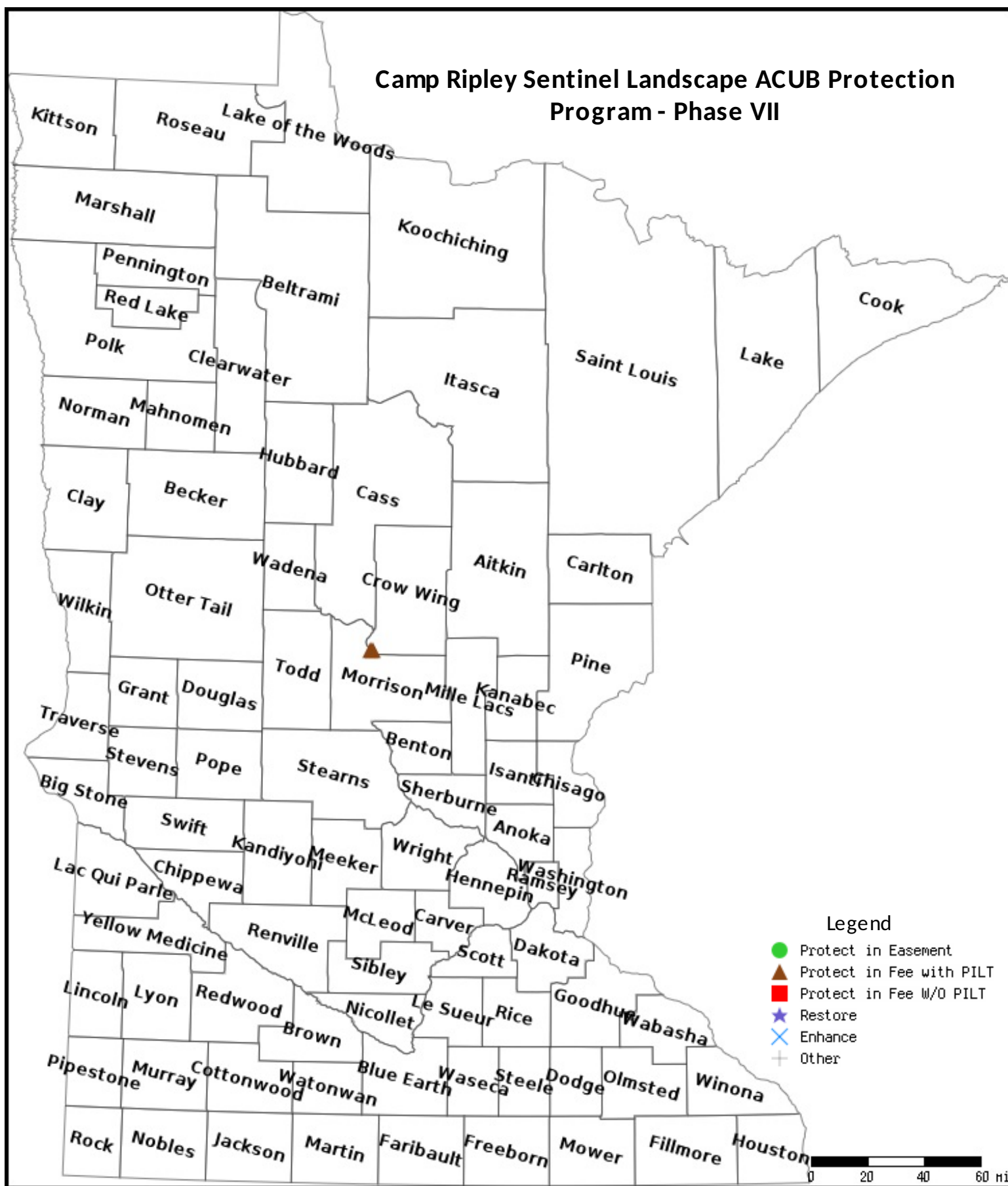
No parcels with an activity type protect and has buildings.

Section 3 - Other Parcel Activity

No parcels with an other activity type.

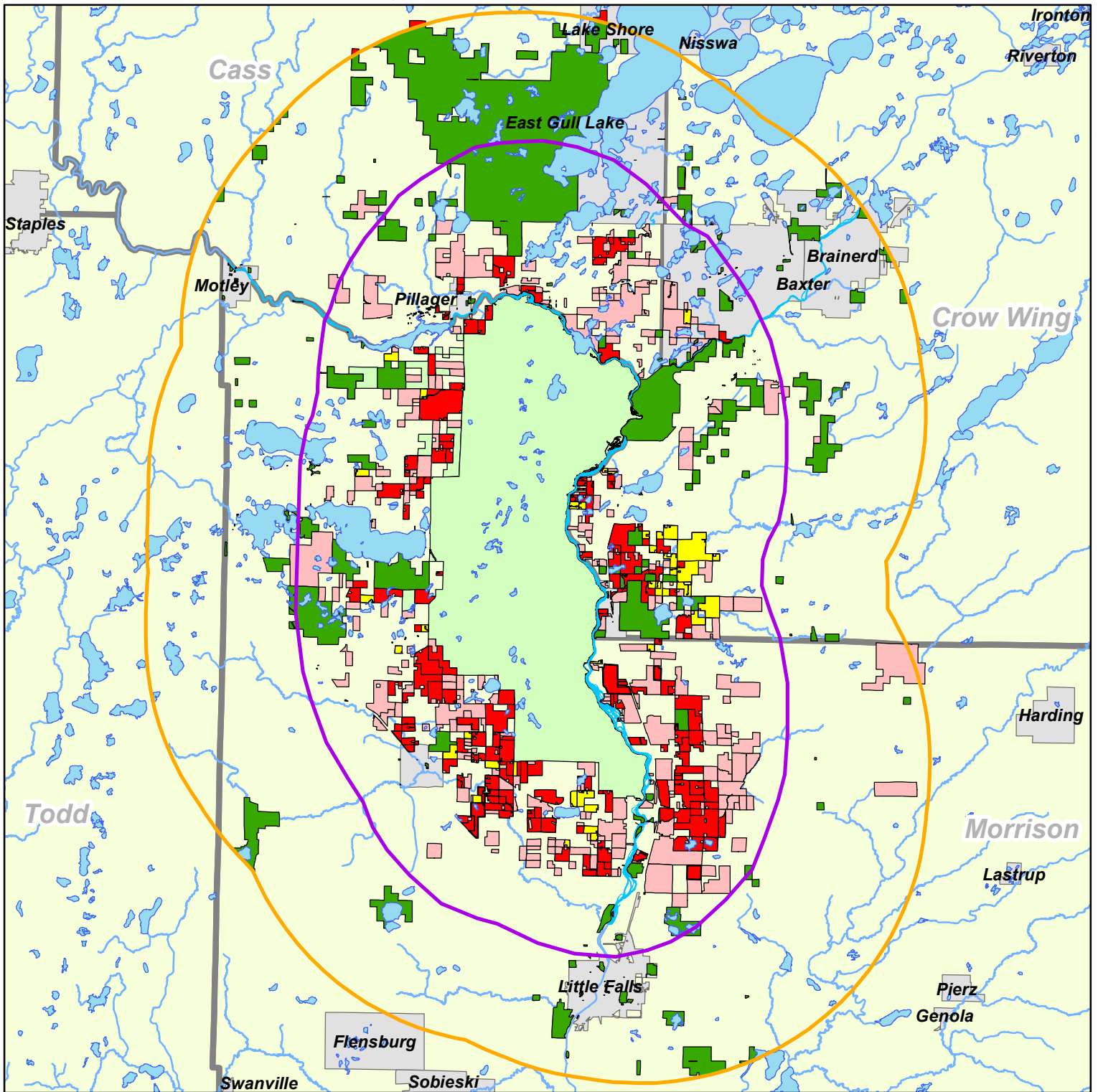
Parcel Map


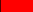





Camp Ripley Sentinel Landscape ACUB Protection Program - Phase VII

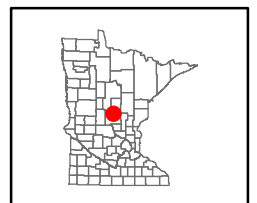


Data Generated From Parcel List

Camp Ripley Army Compatible Use Buffer (ACUB)



-  Protected Lands DOD Funded ACUB
-  Protected Lands LSOHC Funded ACUB
-  Protected Compatible Lands (State/County/TNC)
-  Camp Ripley Lands (State Game Refuge)
-  Interested Landowner Parcels
-  10-Mile Sentinel Landscape Priority Area
-  5-Mile LSOHC Camp Ripley ACUB Priority Area
-  Municipality



Maps are for graphical purposes only. They do not represent a legal survey.

Lessard-Sams Outdoor Heritage Council

Comparison Report

Program Title: 2018 - Camp Ripley Sentinel Landscape ACUB Protection Program - Phase VII

Organization: Morrison SWCD

Manager: Helen McLennan

Budget

Requested Amount: \$3,207,000

Appropriated Amount: \$1,229,000

Percentage: 38.32%

Budget Item	Total Requested		Total Appropriated		Percentage of Request	
	LSOHC Request	Anticipated Leverage	Appropriated Amount	Anticipated Leverage	Percentage of Request	Percentage of Leverage
Personnel	\$185,500	\$0	\$98,900	\$0	53.32%	-
Contracts	\$46,200	\$0	\$0	\$0	0.00%	-
Fee Acquisition w/ PILT	\$137,500	\$412,500	\$137,500	\$412,500	100.00%	100.00%
Fee Acquisition w/o PILT	\$0	\$0	\$0	\$0	-	-
Easement Acquisition	\$2,494,700	\$0	\$852,200	\$0	34.16%	-
Easement Stewardship	\$143,000	\$0	\$45,500	\$0	31.82%	-
Travel	\$5,300	\$0	\$1,800	\$0	33.96%	-
Professional Services	\$127,500	\$0	\$54,000	\$0	42.35%	-
Direct Support Services	\$52,500	\$0	\$30,700	\$0	58.48%	-
DNR Land Acquisition Costs	\$5,000	\$0	\$5,000	\$0	100.00%	-
Capital Equipment	\$0	\$0	\$0	\$0	-	-
Other Equipment/Tools	\$7,500	\$0	\$2,600	\$0	34.67%	-
Supplies/Materials	\$2,300	\$0	\$800	\$0	34.78%	-
DNR IDP	\$0	\$0	\$0	\$0	-	-
Total	\$3,207,000	\$412,500	\$1,229,000	\$412,500	38.32%	100.00%

How will this program accommodate the reduced appropriation recommendation from the original proposed requested amount?

Acquisition of the Tiller tract is still feasible through the reduced recommendation amount. Approximately 1/3 of the originally proposed easements and acres will be protected with this appropriation, prorating from 22 easements on 1,320 acres to approximately 7 easements on 440 acres.

Output

Table 1a. Acres by Resource Type

Type	Total Proposed	Total in AP	Percentage of Proposed
Restore	0	0	-
Protect in Fee with State PILT Liability	125	125	100.00%
Protect in Fee W/O State PILT Liability	0	0	-
Protect in Easement	1,320	440	33.33%
Enhance	0	0	-

Table 2. Total Funding by Resource Type

Type	Total Proposed	Total in AP	Percentage of Proposed
Restore	0	0	-
Protect in Fee with State PILT Liability	207,000	207,000	100.00%
Protect in Fee W/O State PILT Liability	0	0	-
Protect in Easement	3,000,000	1,022,000	34.07%
Enhance	0	0	-

Table 3. Acres within each Ecological Section

Type	Total Proposed	Total in AP	Percentage of Proposed
Restore	0	0	-
Protect in Fee with State PILT Liability	125	125	100.00%
Protect in Fee W/O State PILT Liability	0	0	-
Protect in Easement	1,320	440	33.33%
Enhance	0	0	-

Table 4. Total Funding within each Ecological Section

Type	Total Proposed	Total in AP	Percentage of Proposed
Restore	0	0	-
Protect in Fee with State PILT Liability	207,000	207,000	100.00%
Protect in Fee W/O State PILT Liability	0	0	-
Protect in Easement	3,000,000	1,022,000	34.07%
Enhance	0	0	-