

Lessard-Sams Outdoor Heritage Council

Fiscal Year 2018 / ML 2017 Request for Funding



Date: May 26, 2016

Program or Project Title: Accelerating the Wildlife Management Area Program - Phase IX (PA02)

Funds Requested: \$18,814,000

Manager's Name: Eran Sandquist
Title: State Coordinator - MN
Organization: Pheasants Forever, Inc.
Address: 410 Lincoln Ave South
Address 2: PO Box 91
City: South Haven, MN 55382
Office Number: 320-236-7755
Mobile Number: 763-242-1273
Email: esandquist@pheasantsforever.org
Website: www.pheasantsforever.org

County Locations: Chippewa, Cottonwood, Fillmore, Jackson, Lac Qui Parle, Lyon, Martin, Murray, Redwood, Stearns, Swift, Watonwan, Wright, and Yellow Medicine.

Regions in which work will take place:

- Forest / Prairie Transition
- Prairie
- Metro / Urban

Activity types:

- Protect in Fee

Priority resources addressed by activity:

- Wetlands
- Prairie

Abstract:

This proposal accelerates the protection of 3,400 acres of strategic prairie grassland, wetland, and other wildlife habitat as State Wildlife Management Areas open to public hunting.

Design and scope of work:

The pressures from development, industry, and agriculture continue to mount on wildlife habitat within the farmland regions of Minnesota. In fact, despite our collective investments in conservation, it is believed that many of the agricultural counties in Minnesota are continuing to experience a net loss of wildlife habitat. This unfortunate reality is currently being exacerbated by conversion of lands expiring out of CRP. Over 500,000 acres of CRP in Minnesota are set to expire in the next four years, with lower authority to re-enroll throughout the life of the Farm Bill. Now, more than ever, is the time to accelerate our investments in permanently protected high quality public habitat complexes that will protect, maintain, and increase Minnesota's wildlife populations. Providing public areas for Minnesotans to hunt, trap, fish and otherwise recreate in the outdoors are urgent needs and is fundamental to ensure Minnesota's outdoor heritage is passed on to future generations. In addition, these public areas help bolster the economy as hunters in Minnesota support over 12,400 jobs and spend \$733 million annually.

To help slow and reverse the loss of habitat and declining wildlife populations, Pheasants Forever (PF) and our partners will protect (fee acquisition from willing sellers) 3,400 acres of high priority grassland (native prairie if available), wetland, and wildlife habitat as state Wildlife Management Areas (WMA) throughout the pheasant range of Minnesota. PF is striving to build landscape level habitat

complexes that will protect and sustain wildlife populations. Many of the potential projects are additions to existing WMAs which were originally acquired in partnership with MNDNR, local PF chapters, and conservation partners.

Projects were developed and selected in conjunction with local and regional DNR staff. All projects will meet standards and requirements for inclusion into the WMA system and DNR Commissioner approval will be received for any project funded under this proposal. In addition to meeting the minimum WMA standards, additional criteria were used to develop the potential project list including: 1) Does the parcel contain habitat restoration potential that will result in an increase in wildlife populations? 2) Does the parcel build upon existing investments in public and private land habitat (landscape scale significance)? 3) Does the parcel contain significant natural communities or will it protect or buffer significant natural communities? 4) Does the parcel have the potential and focus for habitat protection and restoration in the future? 5) Does the parcel provide multiple benefits (recreation, access, water control, water quality, lake shore, local community support, etc.)?

Providing high quality habitat and keeping future management concerns in mind, all acquisitions will be restored and/or enhanced to as high quality as practicable, with the belief that quality and comprehensive restorations utilizing native species result in lower management costs. Acquired croplands will be permanently retired and restored to diverse grasslands and wetlands habitat. Restorations will also consider the needs of the monarch butterfly and native pollinators.

Which sections of the Minnesota Statewide Conservation and Preservation Plan are applicable to this project:

- H1 Protect priority land habitats
- H5 Restore land, wetlands and wetland-associated watersheds

Which other plans are addressed in this proposal:

- Minnesota Prairie Conservation Plan
- Minnesota's Wildlife Management Area Acquisition - The Next 50 Years

Describe how your program will advance the indicators identified in the plans selected:

This program directly contributes to the primary goal of each identified plan which is restoration and protection of additional wetland/grassland habitat complexes. The MN Prairie Conservation Plan's 25 year goal is to permanently protect through fee title acquisition 222,100 acres in core areas, 82,000 acres in corridors, and 547,300 acres elsewhere in the agricultural matrix. The MN WMA Acquisition 50 year plan is to identify and permanently protect 702,200 acres. This program will contribute 3,400 acres to these goals.

Which LSOHC section priorities are addressed in this proposal:

Prairie:

- Protect, enhance, or restore existing wetland/upland complexes, or convert agricultural lands to new wetland/upland habitat complexes

Forest / Prairie Transition:

- Protect, enhance, and restore wild rice wetlands, shallow lakes, wetland/grassland complexes, aspen parklands, and shoreland that provide critical habitat for game and nongame wildlife

Metro / Urban:

- Protect, enhance, and restore remnant native prairie, Big Woods forests, and oak savanna with an emphasis on areas with high biological diversity

Describe how your program will produce and demonstrate a significant and permanent conservation legacy and/or outcomes for fish, game, and wildlife as indicated in the LSOHC priorities:

The Accelerating Wildlife Management Area Program has already achieved landscape level impacts in its short eight years. By permanently protecting and restoring almost 10,000 acres to date as Wildlife Management Areas, this strategic and focused partnership is delivering meaningful results that protect wildlife habitat in perpetuity and also opens them for public access. Further this partnership has leveraged over \$4,505,000 in matching funds since inception further stretching the Outdoor Heritage Fund commitment. This Phase IX proposal directly contributes an additional 3,400 acres of protected and restored habitat.

Describe how the proposal uses science-based targeting that leverages or expands corridors and complexes, reduces fragmentation or protects areas identified in the MN County Biological Survey:

This proposal utilizes the best science and modeling available to build or expand corridors and complexes. To scale this large programmatic grant to local landscape level priorities Pheasants Forever works in close collaboration with the local area managers of the MN DNR, USFWS, and other Minnesota partners in addition to utilizing SWAAT scores to build on existing grassland and wetland conservation efforts in a science based approach. This proposal will continue to leverage spatial data and the power of GIS to identify acquisitions based on landscape level priority areas. Preference is given to project sites that help deliver the goals of other recognized conservation initiatives and plans. Data layers (i.e. MN Biological Survey, Natural Heritage Database, MN Prairie Plan, Wellhead Protection Areas, HAPET Scores, Pheasant Action Plan, existing protected land, etc.) will be used to help justify projects and focus areas as well as to inform decisions when allocating scarce dollars for habitat protection, restoration and enhancement. If there are species of concern located on or adjacent to project tracts as identified in the MBS layer we take an extra consideration when developing proposals and this ultimately may change the way we look at and prioritize project tracts. In addition, if there are rare or sensitive species on site we will be able to identify those, communicate with the appropriate long-term land managers, and ensure we're having a positive impact on these species.

How does the proposal address habitats that have significant value for wildlife species of greatest conservation need, and/or threatened or endangered species, and list targeted species:

Grant funding will primarily focus on prairie wetland and grassland habitats previously converted for row crop agriculture. Priority will also be given to protecting parcels with remnant native prairie. The well documented and number one threat to all of Minnesota's wildlife species is habitat loss and fragmentation. This program focuses on the protection of priority grasslands and wetlands that build upon existing investments in habitat. The aim is to increase functionality and productivity of grassland landscapes (e.g. Grassland Bird Conservation Area Concept) to maximize quality habitat for game production, for the benefit of important wildlife species, and for Minnesotans to recreate on.

This strategic acquisition and restoration of lands adjacent to existing prairie wetland complexes will increase the overall size of the habitat complex, reducing edge and tremendously benefiting those species that rely on larger blocks of habitat including the marbled godwit, bobolink, and grasshopper sparrow. Post restoration the wetland and high diversity grassland complexes will provide habitat for a myriad of species including waterfowl, black terns, bobolinks, meadowlarks, ring-necked pheasants, pollinators and monarchs. Other species of concern benefiting from this project include the prairie chicken, short-eared owl, marsh hawk, and yellow rails.

Identify indicator species and associated quantities this habitat will typically support:

Pheasant

By looking at the ratios of CRP acres in Minnesota to pheasant harvest, we can estimate that every three acres of grassland habitat has the potential to produce one harvested pheasant rooster.

Prairie Chickens

According to the research literature and personal observations in Minnesota, prairie chickens require a minimum of 320 acres of high quality grasslands with no areas hostile to grassland wildlife (woodlots, farmsteads, etc) near these grasslands. For every 320 acre patch of high quality grassland in the prairie chicken range in the northwest part of the state, we can expect there to be a lek, or booming ground. The average size of booming grounds in Minnesota is roughly 11 males.

Bobolink and Grasshopper Sparrow

The breeding territory size of bobolinks and grasshopper sparrows is 1.7 and 2.1 acres respectively in high quality habitat in Wisconsin. If all of the habitat was occupied, a 100 acres of habitat could potentially hold approximately 60 and 48 pairs of bobolinks and grasshopper sparrows respectively.

Monarch Butterfly

Research from the University of Minnesota has shown that it takes approximately 30 milkweed plants to result in one monarch butterfly contributing to the overwintering Mexican population. Grasslands can have between 100-250 milkweed stems per acre. An acre of restored or enhanced grassland could potentially contribute 3 to 8 monarchs to the population.

Outcomes:

Programs in forest-prairie transition region:

- Protected, restored, and enhanced nesting and migratory habitat for waterfowl, upland birds, and species of greatest conservation need *Number of acres of wetlands and uplands protected and restored.*

Programs in metropolitan urbanizing region:

- Protected habitats will hold wetlands and shallow lakes open to public recreation and hunting *Number and acres of wetlands protected and restored. Number of acquisitions that provide additional access to existing public lands.*

Programs in prairie region:

- Key core parcels are protected for fish, game and other wildlife *Number of new parcels protected. Number of parcels added to existing habitat complexes and resulting percent increase in permanently protected acres of habitat complex.*

How will you sustain and/or maintain this work after the Outdoor Heritage Funds are expended:

All lands will be enrolled into the state Wildlife Management Area system and will be managed in perpetuity by the Minnesota DNR. All acquired lands will meet the minimum initial development standards for WMAs. All acquisitions will be restored and/or enhanced to as high quality as practicable, with the knowledge that quality and comprehensive restorations utilizing native species result in lower management costs. In addition, our local Pheasants Forever chapter members and volunteers maintain a high interest in seeing the habitat and productivity of acquired parcels are at high-quality levels. PF and partners including the DNR and USFWS will develop an ecological restoration and management plan for each parcel. Grant and partner dollars will also be used for the initial site development and restoration/enhancement work.

Explain the things you will do in the future to maintain project outcomes:

Year	Source of Funds	Step 1	Step 2	Step 3
Post Transfer to MNDNR	MN DNR - Game and Fish Funds	Monitoring	Maintenance	Management

What is the degree of timing/opportunistic urgency and why it is necessary to spend public money for this work as soon as possible:

The incremental exodus of Conservation Reserve Program acres in Minnesota's farmland region in recent years has resulted in a loss of 700,000 acres of habitat. Meanwhile, economic and policy pressures on grasslands and wetlands continue. Fee-title acquisition is one essential strategy that protects foundational grassland habitat.

How does this proposal include leverage in funds or other effort to supplement any OHF appropriation:

Land acquisition and restoration have not kept pace with habitat restoration needs or the backlog of willing sellers within the pheasant range. Opportunity is not the limiting factor in implementing the pheasant plan. Available funding is the limiting factor. With the mass amounts of CRP acres expiring in the near future, our conservation efforts must be accelerated. Before the passage of the OHF, PF would help acquire approximately 1,000 acres of land yearly that had been donated to a public agency. This grant significantly accelerates our ability to acquire priority parcels and more than triples our historic yearly accomplishments even when considering the increased cost of land values. If funded, this proposal will accelerate the protection and restoration of Minnesota's valuable wetland and grassland habitats and provide additional public hunting and fishing areas.

Relationship to other funds:

- Not Listed

Describe the relationship of the funds:

Not Listed

Describe the source and amount of non-OHF money spent for this work in the past:

Appropriation Year	Source	Amount
Annual	PF	150,000

Activity Details

Requirements:

If funded, this proposal will meet all applicable criteria set forth in MS 97A.056 - **Yes**

Will local government approval be sought prior to acquisition - **No**

At minimum we will notify local government in writing of the intent to acquire and donate lands to the state and follow up with questions prior to acquisition. In cases where there is interest, we will also indicate our willingness to attend or ask to attend county or township meetings to communicate our interest in the projects and seek support.

Is the land you plan to acquire free of any other permanent protection - **No**

A limited number of the parcels may have a federal or state easement on a portion of the tract which provides permanent protection for wetlands or grasslands. If a parcel has one of these encumbrances, and is still deemed a high priority by the partners, we will follow guidance established by the Outdoor Heritage Fund to proceed, or use non-state funding to acquire the residual value of the protected portion of the property.

Do you anticipate federal funds as a match for this program - **Yes**

Are the funds confirmed - **No**

What is the approximate date you anticipate receiving confirmation of the federal funds - **07/01/2017**

Land Use:

Will there be planting of corn or any crop on OHF land purchased or restored in this program - **Yes**

Explain

The primary purposes of WMAs are to develop and manage for the production of wildlife and for compatible outdoor recreation. To fulfill those goals, the DNR may use limited farming specifically to enhance or benefit the management of state lands for wildlife. This proposal may include initial development plans or restoration plans to utilize farming to prepare previously farmed sites for native plant seeding. This is a standard practice across the Midwest to prepare the seedbed for native seed planting. In these restorations, PF's policy is to use non neonicotinoid treated seed and no herbicides other than glyphosate. On a small percentage of WMAs (less than 2.5%), DNR uses farming to provide a winter food source for a variety of wildlife species in agriculture-dominated landscapes largely devoid of winter food sources. There are no immediate plans to use farming for winter food on any of the parcels in this proposal.

Are any of the crop types planted GMO treated - **Yes**

Is this land currently open for hunting and fishing - **No**

Will the land be open for hunting and fishing after completion - **Yes**

No Variation from State of Minnesota regulations.

Are there currently trails or roads on any of the acquisitions on the parcel list - **No**

Will new trails or roads be developed as a result of the OHF acquisition - **No**

Accomplishment Timeline

Activity	Approximate Date Completed
Identify priority acquisitions	07/01/2017
Contract appraisals ordered	09/01/2017
Purchase agreements	02/01/2018
Re-evaluate tract priority	02/14/2018
Contract appraisals ordered	04/01/2018
Purchase agreements	09/01/2018
Close on tracts	01/01/2020
Restorations completed	06/30/2022

Budget Spreadsheet

Total Amount of Request: \$18,814,000

Budget and Cash Leverage

BudgetName	LSOHC Request	Anticipated Leverage	Leverage Source	Total
Personnel	\$80,000	\$0		\$80,000
Contracts	\$1,360,000	\$75,000	Federal, Private, PF	\$1,435,000
Fee Acquisition w/ PILT	\$17,000,000	\$925,000	Federal, Private, PF	\$17,925,000
Fee Acquisition w/o PILT	\$0	\$0		\$0
Easement Acquisition	\$0	\$0		\$0
Easement Stewardship	\$0	\$0		\$0
Travel	\$3,000	\$0		\$3,000
Professional Services	\$226,000	\$0		\$226,000
Direct Support Services	\$25,000	\$0		\$25,000
DNR Land Acquisition Costs	\$120,000	\$0		\$120,000
Capital Equipment	\$0	\$0		\$0
Other Equipment/Tools	\$0	\$0		\$0
Supplies/Materials	\$0	\$0		\$0
DNR IDP	\$0	\$0		\$0
Total	\$18,814,000	\$1,000,000	-	\$19,814,000

Personnel

Position	FTE	Over # of years	LSOHC Request	Anticipated Leverage	Leverage Source	Total
PF State Coordinator - MN	0.09	3.00	\$25,000	\$0		\$25,000
PF Field Staff	0.16	3.00	\$25,000	\$0		\$25,000
PF Grants Staff	0.15	3.00	\$30,000	\$0		\$30,000
Total	0.40	9.00	\$80,000	\$0		\$80,000

Amount of Request: \$18,814,000

Amount of Leverage: \$1,000,000

Leverage as a percent of the Request: 5.32%

DSS + Personnel: \$105,000

As a % of the total request: 0.56%

Easement Stewardship: \$0

As a % of the Easement Acquisition: -%

How did you determine which portions of the Direct Support Services of your shared support services is direct to this program:

1.5% rate on \$1,669,000 (Personnel, Contracts, Travel, Professional Services)

Does the amount in the contract line include R/E work?

We anticipate that all of the contract funding will be used for restoration, enhancement and initial development of the protected acres. This could include but is not limited to wetland/grassland restoration, tree removal, prescribed fire, building removal, parking lots, signage, and other development activities.

Does the amount in the travel line include equipment/vehicle rental? - No

Explain the amount in the travel line outside of traditional travel costs of mileage, food, and lodging:

n/a

Describe and explain leverage source and confirmation of funds:

Leverage is expected from multiple sources including but not limited to federal sources, land value donations, contractor donations and PF. Not every source is 100% confirmed at this point. However, PF has an exemplary track record of delivery and over-achievement

of match commitments that further stretch OHF funding.

Does this proposal have the ability to be scalable? - Yes

Tell us how this project would be scaled and how administrative costs are affected, describe the “economy of scale” and how outputs would change with reduced funding, if applicable:

This proposal if scaled back would be reduced proportionately across all categories of the budget and output tables.

Output Tables

Table 1a. Acres by Resource Type

Type	Wetlands	Prairies	Forest	Habitats	Total
Restore	0	0	0	0	0
Protect in Fee with State PILT Liability	600	2,800	0	0	3,400
Protect in Fee W/O State PILT Liability	0	0	0	0	0
Protect in Easement	0	0	0	0	0
Enhance	0	0	0	0	0
Total	600	2,800	0	0	3,400

Table 1b. How many of these Prairie acres are Native Prairie?

Type	Native Prairie
Restore	0
Protect in Fee with State PILT Liability	40
Protect in Fee W/O State PILT Liability	0
Protect in Easement	0
Enhance	0
Total	40

Table 2. Total Requested Funding by Resource Type

Type	Wetlands	Prairies	Forest	Habitats	Total
Restore	\$0	\$0	\$0	\$0	\$0
Protect in Fee with State PILT Liability	\$3,320,100	\$15,493,900	\$0	\$0	\$18,814,000
Protect in Fee W/O State PILT Liability	\$0	\$0	\$0	\$0	\$0
Protect in Easement	\$0	\$0	\$0	\$0	\$0
Enhance	\$0	\$0	\$0	\$0	\$0
Total	\$3,320,100	\$15,493,900	\$0	\$0	\$18,814,000

Table 3. Acres within each Ecological Section

Type	Metro/Urban	Forest/Prairie	SE Forest	Prairie	Northern Forest	Total
Restore	0	0	0	0	0	0
Protect in Fee with State PILT Liability	150	400	0	2,850	0	3,400
Protect in Fee W/O State PILT Liability	0	0	0	0	0	0
Protect in Easement	0	0	0	0	0	0
Enhance	0	0	0	0	0	0
Total	150	400	0	2,850	0	3,400

Table 4. Total Requested Funding within each Ecological Section

Type	Metro/Urban	Forest/Prairie	SE Forest	Prairie	Northern Forest	Total
Restore	\$0	\$0	\$0	\$0	\$0	\$0
Protect in Fee with State PILT Liability	\$830,000	\$2,213,400	\$0	\$15,770,600	\$0	\$18,814,000
Protect in Fee W/O State PILT Liability	\$0	\$0	\$0	\$0	\$0	\$0
Protect in Easement	\$0	\$0	\$0	\$0	\$0	\$0
Enhance	\$0	\$0	\$0	\$0	\$0	\$0
Total	\$830,000	\$2,213,400	\$0	\$15,770,600	\$0	\$18,814,000

Table 5. Average Cost per Acre by Resource Type

Type	Wetlands	Prairies	Forest	Habitats
Restore	\$0	\$0	\$0	\$0
Protect in Fee with State PILT Liability	\$5,534	\$5,534	\$0	\$0
Protect in Fee W/O State PILT Liability	\$0	\$0	\$0	\$0
Protect in Easement	\$0	\$0	\$0	\$0
Enhance	\$0	\$0	\$0	\$0

Table 6. Average Cost per Acre by Ecological Section

Type	Metro/Urban	Forest/Prairie	SE Forest	Prairie	Northern Forest
Restore	\$0	\$0	\$0	\$0	\$0
Protect in Fee with State PILT Liability	\$5,533	\$5,534	\$0	\$5,534	\$0
Protect in Fee W/O State PILT Liability	\$0	\$0	\$0	\$0	\$0
Protect in Easement	\$0	\$0	\$0	\$0	\$0
Enhance	\$0	\$0	\$0	\$0	\$0

Target Lake/Stream/River Feet or Miles

0

I have read and understand Section 15 of the Constitution of the State of Minnesota, Minnesota Statute 97A.056, and the Call for Funding Request. I certify I am authorized to submit this proposal and to the best of my knowledge the information provided is true and accurate.

Parcel List

Explain the process used to select, rank and prioritize the parcels:

Parcels are identified and strategically prioritized using the best science and decision support tools (e.g. HAPET Thunderstorm Maps) available. Preference is given to project sites that help deliver the goals of other recognized conservation initiatives and plans. Data layers (i.e. MN Biological Survey, Natural Heritage Database, MN Prairie Plan, Wellhead Protection Areas, Pheasant Action Plan, existing protected land, etc.) are used to help justify projects and focus areas as well as to inform decisions on top priorities for protection and restoration efforts.

Section 1 - Restore / Enhance Parcel List

No parcels with an activity type restore or enhance.

Section 2 - Protect Parcel List

Chippewa

Name	TRDS	Acres	Est Cost	Existing Protection?	Hunting?	Fishing?
Spartan WMA Addition	11639218	66	\$360,000	No	Full	Not Applicable

Cottonwood

Name	TRDS	Acres	Est Cost	Existing Protection?	Hunting?	Fishing?
Farhagen WMA Addition Tr. 2	10536214	120	\$900,000	No	Full	Not Applicable
Rock Ridge WMA Addition	10735214	59	\$125,000	Yes	Full	Not Applicable

Fillmore

Name	TRDS	Acres	Est Cost	Existing Protection?	Hunting?	Fishing?
Beaver Creek WMA Addition	10113228	320	\$2,200,000	No	Full	Not Applicable

Jackson

Name	TRDS	Acres	Est Cost	Existing Protection?	Hunting?	Fishing?
Caraway WMA Addition	10436225	99	\$800,000	No	Full	Not Applicable
Petersburg WMA Addition	10134226	116	\$650,000	Yes	Full	Not Applicable
Sioux Valley WMA Addition	10137228	246	\$2,000,000	No	Full	Not Applicable

Lac Qui Parle

Name	TRDS	Acres	Est Cost	Existing Protection?	Hunting?	Fishing?
Caerulean WMA Addition	11945219	152	\$650,000	No	Full	Not Applicable

Lyon

Name	TRDS	Acres	Est Cost	Existing Protection?	Hunting?	Fishing?
Green Valley WMA Addition	11240219	80	\$480,000	No	Full	Not Applicable
Ringneck Ravine WMA Addition	11042222	28	\$196,000	No	Full	Not Applicable

Martin

Name	TRDS	Acres	Est Cost	Existing Protection?	Hunting?	Fishing?
Gruven WMA Addition Tr. 2	10330235	195	\$1,250,000	No	Full	Not Applicable

Murray

Name	TRDS	Acres	Est Cost	Existing Protection?	Hunting?	Fishing?
Haberman WMA Addition	10539218	80	\$450,000	No	Full	Not Applicable
Iron Lake WMA Addition	10842210	14	\$50,000	No	Full	Not Applicable
Skandia WMA Addition	10841219	463	\$2,300,000	No	Full	Not Applicable
Talcot Lake WMA Addition	10539225	40	\$150,000	No	Full	Not Applicable

Redwood

Name	TRDS	Acres	Est Cost	Existing Protection?	Hunting?	Fishing?
Lamberton WMA Addition	10936217	160	\$800,000	No	Full	Not Applicable

Stearns

Name	TRDS	Acres	Est Cost	Existing Protection?	Hunting?	Fishing?
Mel Roehrl WMA Addition Tr. 3	12435204	160	\$600,000	No	Full	Not Applicable
Mel Roehrl WMA Addition Tr. 4	12435205	120	\$500,000	No	Full	Not Applicable

Swift

Name	TRDS	Acres	Est Cost	Existing Protection?	Hunting?	Fishing?
Bench WMA Addition	12238231	80	\$300,000	No	Full	Not Applicable

Watsonwan

Name	TRDS	Acres	Est Cost	Existing Protection?	Hunting?	Fishing?
Younger Brothers WMA Addition	10731222	40	\$200,000	No	Full	Not Applicable
Younger Brothers WMA Addition	10731223	69	\$330,000	No	Full	Not Applicable
Younger Brothers WMA Addition	10731226	70	\$325,000	No	Full	Not Applicable

Wright

Name	TRDS	Acres	Est Cost	Existing Protection?	Hunting?	Fishing?
Pelican Lake WMA Addition	12024218	130	\$884,000	No	Full	Not Applicable

Yellow Medicine

Name	TRDS	Acres	Est Cost	Existing Protection?	Hunting?	Fishing?
Upper Antelope Valley WMA Addition	11444209	34	\$51,000	No	Full	Not Applicable

Section 2a - Protect Parcel with Bldgs

Murray

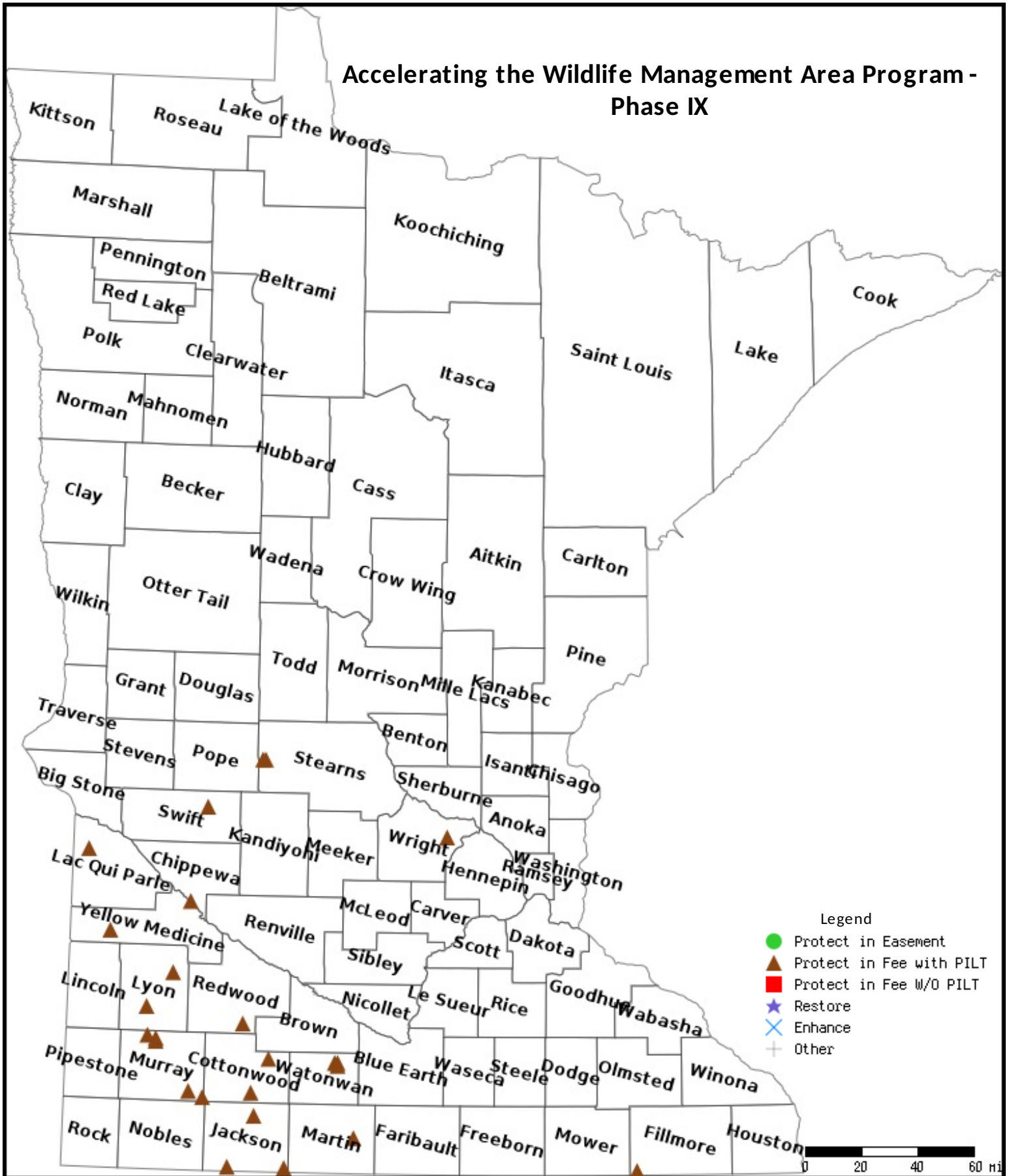
Name	TRDS	Acres	Est Cost	# Bldgs?	Bldg Improve Desc	Value of Bldg	Disposition of Improvements
Lake Maria WMA Addition	10841218	160	\$1,120,000	3	Old homesite	\$0	Demolish

Section 3 - Other Parcel Activity

No parcels with an other activity type.

Parcel Map

Accelerating the Wildlife Management Area Program - Phase IX



Data Generated From Parcel List

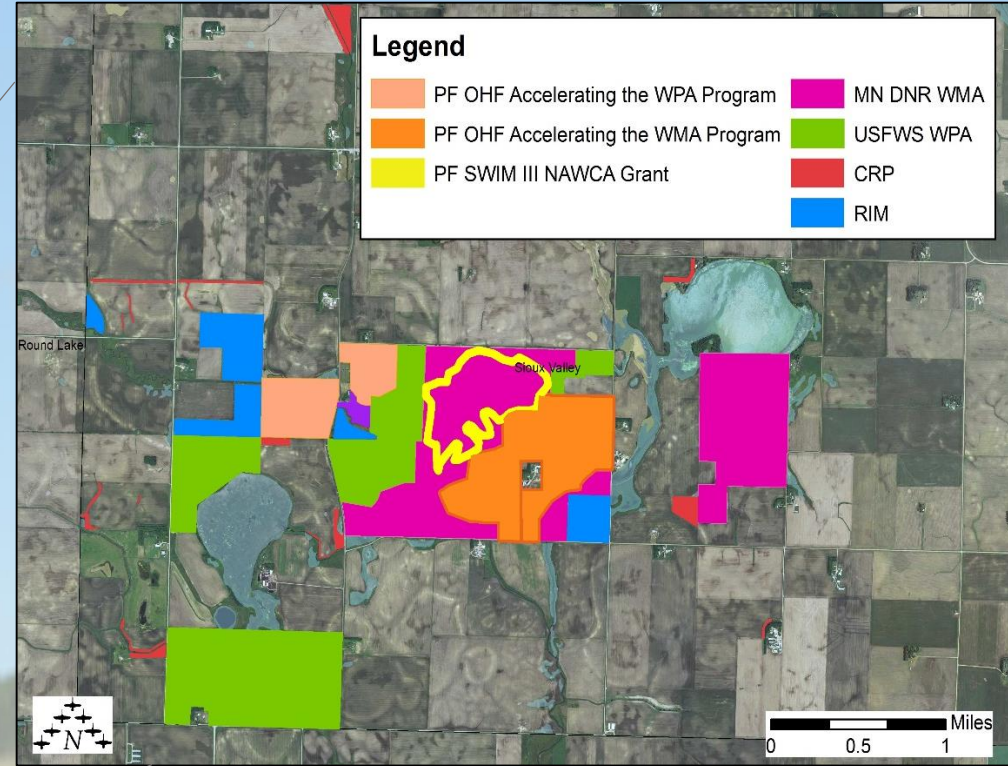
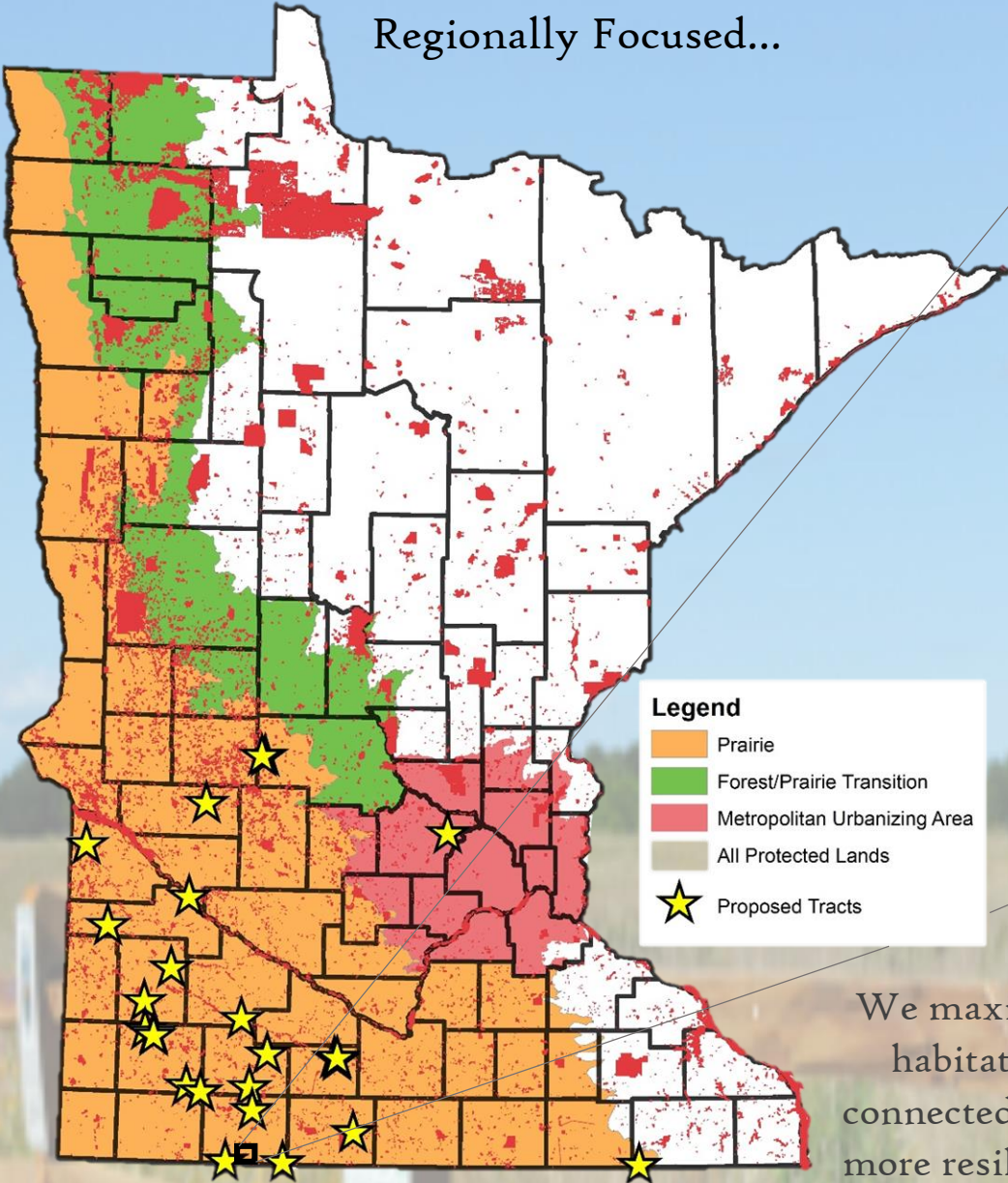
Accelerating the Wildlife Management Area Program Phase IX



Protect and Restore Critical Habitat
 Build Upon Existing Protected Lands
 Permanent Protection for ALL

Regionally Focused...

Strategically Building on Existing Complexes...



We maximize past investments in habitat protection and create a connected system of productive and more resilient habitat for waterfowl and other grassland/wetland species.



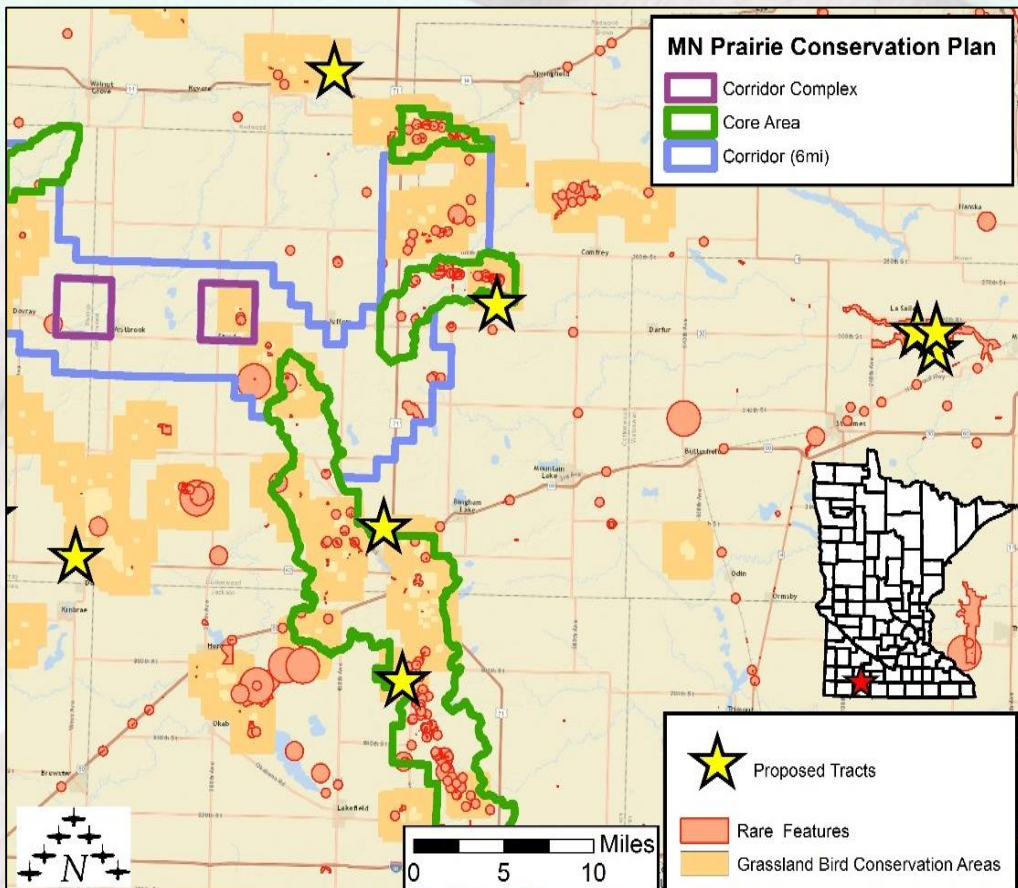
Before Restoration



After Restoration



- All land acquired in fee-title are enrolled into Minnesota's Wildlife Management Area System and are managed by the MN DNR. All lands are fully restored and open to the public for outdoor enjoyment including activities such as: bird watching, hunting, hiking, school field trips or fishing.
- Pheasants Forever's 76 chapters and 25,000 members across Minnesota are bringing partners together to match this request with \$1 million dollars of match.



- Rare features and/or species of greatest concern are located within 3 miles of the majority of acquisitions.
- Majority of acquisitions are located within Grassland Bird Conservation Areas.
- All projects build upon past investments in habitat conservation and connect existing protected lands and/or create corridors through habitat stepping stones.
- This proposal restores and permanently protects strategically identified critical habitat for birds, fish, plants, and wildlife.