

Lessard-Sams Outdoor Heritage Council

Fiscal Year 2018 / ML 2017 Request for Funding



Date: June 21, 2016

Program or Project Title: Laurentian Forest - St. Louis County Habitat Project (FA02)

Funds Requested: \$8,309,600

Manager's Name: Craig Engwall
Title: Executive Director
Organization: MN Deer Hunters Association
Address: 460 Peterson Road
City: Grand Rapids, MN 55744
Office Number: 218-327-1103
Fax Number: 218-327-1349
Email: craig.engwall@mndeerhunters.com
Website: www.mndeerhunters.com

County Locations: St. Louis

Regions in which work will take place:

- Northern Forest

Activity types:

- Protect in Fee

Priority resources addressed by activity:

- Forest
- Habitat

Abstract:

Project partners Minnesota Deer Hunters Association (MDHA), Ruffed Grouse Society (RGS) and The Conservation Fund (TCF) will work cooperatively with St. Louis County to protect in fee approximately 7,000 – 8,000 acres of forest habitat at risk of being converted to uses that would degrade critical habitat for wildlife in Minnesota's northeast forest landscape. Targeted parcels will be those that are vital to maintaining large, unfragmented blocks of forest that deliver the greatest habitat benefits. Adjacency to county, state and federal lands will be a key focus in leveraging the habitat benefits provided by project parcels.

Design and scope of work:

Problem to be addressed

Northern Minnesota's forest-dominated landscape provides important wildlife habitat, clean water, public recreational opportunities and economic value from its timber. It includes many large, privately owned parcels that are interspersed with millions of acres of county, state, federal and tribal forest lands. These privately owned parcels total more than one million acres of which most are held by large corporations.

The past two decades have seen significant restructuring in the timber industry that has changed the northern forest and put habitat and public access at risk. More than 500,000 acres of industrial forest lands have changed ownership. Much of this land has been sold and converted into smaller parcels. The Minnesota Forest Resources Council has identified parcelization as the major policy problem confronting the ecological and economic health of Minnesota's forests. Forest conversion and fragmentation are two major physical alterations to the forest that can result from parcelization.

In and near the focus area of this project, this parcelization trend continues. For example, the Potlatch Corporation (Potlatch) once

owned 345,000 acres in the northern forest and now holds only 160,000 acres. In St. Louis County, Potlatch ownership has dropped from 110,000 acres to 70,000 acres. Potlatch has entirely divested its 40,000 acres in Lake County, and it retains only 1,000 acres of the nearly 21,000 acres it held in Pine and Carlton Counties. This divestiture continues as Potlatch has sold, or is in the process of selling, over 175 parcels in St. Louis County since 2013.

Goals and Scope of Work

To mitigate forest conversion and fragmentation and the associated loss of habitat within St. Louis County, this project will protect by acquisition in fee approximately 7,000 – 8,000 acres of high priority habitat.

All of the lands to be protected are currently owned by Potlatch. The project partners and St. Louis County are working with Potlatch to review all of the company's holdings within the county to determine which parcels best fulfill project goals. See project map (Attachment A). St. Louis County has put its full support behind this project. See County Resolution (Attachment B). Please note that all mapped acres are included within the project parcel list so as to make the best habitat parcels available for inclusion in the negotiated purchase list, which should constitute approximately 10% of Potlatch's current holdings in the county. The remaining Potlatch parcels that do not receive funding under this application are well-suited to being the focus of a future Request for Funding.

Project partners, in coordination with St. Louis County, will use the following criteria to prioritize parcels:

- 1) Habitat quality;
- 2) Adjacency to other large forest blocks, with an emphasis on lands managed by St. Louis County;
- 3) Immediacy of threat of conversion; and
- 4) Potential to acquire parcels where mineral rights have not been severed.

As will be discussed in greater detail below, St. Louis County will hold and manage all project lands.

Which sections of the Minnesota Statewide Conservation and Preservation Plan are applicable to this project:

- H1 Protect priority land habitats
- LU8 Protect large blocks of forest land

Which other plans are addressed in this proposal:

- Minnesota Forest Resource Council Landscape Plans
- Outdoor Heritage Fund: A 25 Year Framework

Describe how your program will advance the indicators identified in the plans selected:

The predominant theme among the plans selected is the need to protect forest land from parcelization and fragmentation in order to provide the greatest habitat benefits. Additionally, the need to provide access to manage habitat on landlocked public properties is recognized. The goal is not to "round out" public ownership just for the sake of having blocks of public ownership or access. The goal is to focus on those parcels that best leverage our current investment with existing investments in public land ownership to increase the habitat benefit. The collective experience and expertise of the project partners in habitat acquisition and forest biology, together with the St. Louis County Lands and Minerals Department's (SLC Lands) land management skills, will enable the program to advance the goals of the plans.

Which LSOHC section priorities are addressed in this proposal:

Northern Forest:

- Provide access to manage habitat on landlocked public properties or protect forest land from parcelization and fragmentation through fee acquisition, conservation or access easement

Describe how your program will produce and demonstrate a significant and permanent conservation legacy and/or outcomes for fish, game, and wildlife as indicated in the LSOHC priorities:

Project partners, and most particularly RGS biologists, will work with SLC Lands, local wildlife managers, non-game experts from DNR, local Soil and Water Conservation District personnel as well as other local government officials to ensure that these sites will provide lasting conservation outcomes. Additionally, both MDHA and RGS have robust chapters within St. Louis County that will actively promote the project and its conservation benefits as well as its public access for hunting and other recreational activities. Project partners will continue to evaluate the potential benefits of pursuing additional phases to this project.

Describe how the proposal uses science-based targeting that leverages or expands corridors and complexes, reduces fragmentation or protects areas identified in the MN County Biological Survey:

Minnesota County Biological Survey (MCBS) work in St. Louis County is only partially completed and is continuing. MCBS hopes to have at least 90% of the survey work completed by June 2019. Project partners and SLC Lands will work with DNR ecologists and MCBS staff to obtain the best possible and most current information on the distribution and ecology of native plants and animals, native plant communities and the most intact landscapes when evaluating which parcels will be selected for inclusion in the project.

GIS modeling analysis will be completed by project partners and SLC Lands that incorporates multiple criteria to identify the highest priority Potlatch parcels to include in the project.

How does the proposal address habitats that have significant value for wildlife species of greatest conservation need, and/or threatened or endangered species, and list targeted species:

While MDHA and RGS are organizations that contain single species in their names, their work has always focused on habitat benefits for multiple species, game and non-game. An example of this is the work completed in Minnesota Moose Habitat Collaborative - ML 2012, Ch. 264, Art. 1, Sec. 2, Subd. 3(e), and the ongoing work in Minnesota Moose Habitat Collaborative Phase II - ML 2013, Ch. 137, Art. 1, Sec. 2, Subd. 3(f).

In addition to game species such as white-tailed deer, ruffed grouse, woodcock and black bear, the project area contains numerous songbirds and species that are endangered, threatened, or of special concern including moose, gray wolf, Canadian lynx, bald eagle, boreal owl, northern goshawk, northern long-eared bat, big brown bat, tricolored bat, red-shouldered hawk, and peregrine falcon. The parcels selected for this project will help to retain intact forest landscapes that will benefit all of these species.

Identify indicator species and associated quantities this habitat will typically support:

The forest habitat that will be protected by this project includes the following indicator species:

Ovenbird

Ovenbirds are found in upland forests statewide; typically in relatively mature forest but can also be found in younger forests. While territories vary in size and may overlap, an average of 10 pairs for every 10 hectares may be translated to roughly 16 pairs for every 40 acres. Consequently, this project would support approximately 3,200 pairs of Ovenbirds.

Golden-winged Warblers

Often associated with shrubland habitat and regenerating forests, more current research indicates a variety of forest habitats are required by Golden-winged Warblers (a matrix of shrubby wetlands and uplands, regenerating forests, and mature forests). While territories vary in size, an average of 4 pairs for every 10 hectares may be translated to roughly 6 pairs for every 40 acres. Thus, the project would support approximately 1,200 pairs of Golden-winged Warblers.

White-tailed deer

White-tailed deer use a wide variety of forested habitats, are found throughout Minnesota, and are an important game species in the state. In the 33 forested deer permit areas for which deer densities are estimated, covering most of the LSOHC Northern Forest section, the six-year average (2010-2015) for pre-fawn deer densities across all deer permit areas is 13 deer per square mile of land (excluding water). This translates to 0.02 deer (pre-fawning) per acre of forest land habitat or roughly 1 deer (pre-fawning) for every 50 acres of land. For this project, this would equate to 160 deer.

Outcomes:

Programs in the northern forest region:

- Forestlands are protected from development and fragmentation *GIS mapping will show how project parcels align with existing protected forest habitat to maximize project benefits.*

How will you sustain and/or maintain this work after the Outdoor Heritage Funds are expended:

As indicated above, SLC Lands will manage the acquired lands. SLC Lands has a wealth of forest management experience as it manages nearly 900,000 acres of County Administered land, its management system is certified to the ISO 14001 standard, and its practices are certified to the Sustainable Forestry Initiative (SFI) standard. The purpose of SLC Lands is to protect the variety of benefits provided by County Administered lands. These benefits include: healthy forests, wildlife habitat and fisheries, accessible recreational opportunities, forest diversity, forest products, and financial returns which all contribute to local community viability.

Project partners will continue to work with SLC Lands to ensure the best habitat outcomes and evaluate the possibility of developing future CPL projects to enhance the habitat benefits from the project.

Explain the things you will do in the future to maintain project outcomes:

Year	Source of Funds	Step 1	Step 2	Step 3
2019 and ongoing	St. Louis County	Manage and monitor lands consistent with forest certification and management plans.		

What is the degree of timing/opportunistic urgency and why it is necessary to spend public money for this work as soon as possible:

Potlatch has been rapidly divesting its forest holding for a number of years. Statewide, its ownership has dropped to 160,000 acres from 345,000 acres in less than 20 years. In St. Louis County alone, Potlatch ownership has diminished from approximately 110,000 acres to 70,000 acres. In the past three years, Potlatch has sold or is in the process of selling more than 175 separate parcels within St. Louis County. When isolated forest parcels are sold for development, the forest is not only being fragmented, but there is also a demand for new services (roads, power, etc.) that has a detrimental effect on habitat. It can easily be argued that the land owned by Potlatch, more than the prairies where land use conversion has already largely occurred, is the most threatened in the state.

How does this proposal include leverage in funds or other effort to supplement any OHF appropriation:

This project will complement habitat work in St. Louis County that includes two existing habitat projects as well as a proposal that is being submitted to the Council for its FY 2018 Call for Funding Request. Project partners and St. Louis County have been active participants in the two phases of the Minnesota Moose Habitat Collaborative as well as the Sax-Zim Bog wetland restoration project. Additionally, TCF is submitting a proposal that would protect over 2,250 acres of habitat on Bushmen Lake.

This project will enable the partners and St. Louis County to select Potlatch parcels that will not only make this an excellent stand-alone project, but will also leverage the Moose Collaborative, Sax-Zim and Bushmen Lake projects.

Relationship to other funds:

- Not Listed

Describe the relationship of the funds:

Not Listed

Describe the source and amount of non-OHF money spent for this work in the past:

Not Listed

Activity Details

Requirements:

If funded, this proposal will meet all applicable criteria set forth in MS 97A.056 - **Yes**

Will local government approval be sought prior to acquisition - **Yes**

Is the land you plan to acquire free of any other permanent protection - **Yes**

Do you anticipate federal funds as a match for this program - **No**

Land Use:

Will there be planting of corn or any crop on OHF land purchased or restored in this program - **No**

Is this land currently open for hunting and fishing - **No**

Will the land be open for hunting and fishing after completion - **Yes**

State regulations will apply to this land.

Are there currently trails or roads on any of the acquisitions on the parcel list - **Yes**

Describe the types of trails or roads and the allowable uses:

There are existing routes on potential project parcels that were developed for timber harvest and management purposes. In addition to forestry related activities, these routes have been used by hunters and others for recreation, and some of that use has included ATV travel.

Will the trails or roads remain and uses continue to be allowed after OHF acquisition - **Yes**

How will maintenance and monitoring be accomplished:

SLC Lands will maintain and monitor these trails and roads under its forest certification standards.

Will new trails or roads be developed as a result of the OHF acquisition - **Yes**

Describe the types of trails or roads and the allowable uses:

SLC Lands may need to develop routes for forest management. Allowable uses will be only those that are consistent with SLC Lands' forest management and its certification standards.

How will maintenance and monitoring be accomplished:

SLC Lands will maintain and monitor these trails and roads under its forest certification standards.

Accomplishment Timeline

Activity	Approximate Date Completed
Negotiate with landowner and enter into a purchase agreement.	August 2017
Conduct due diligence for acquisition of the properties (appraisals, title work etc.).	November 2017
Acquire fee title to the properties.	June 2018
Transfer lands to St. Louis County.	December 2018

Budget Spreadsheet

Total Amount of Request: \$8,309,600

Budget and Cash Leverage

Budget Name	LSOHC Request	Anticipated Leverage	Leverage Source	Total
Personnel	\$89,300	\$0		\$89,300
Contracts	\$195,200	\$0		\$195,200
Fee Acquisition w/ PILT	\$0	\$0		\$0
Fee Acquisition w/o PILT	\$8,000,000	\$0		\$8,000,000
Easement Acquisition	\$0	\$0		\$0
Easement Stewardship	\$0	\$0		\$0
Travel	\$0	\$0		\$0
Professional Services	\$0	\$0		\$0
Direct Support Services	\$0	\$0		\$0
DNR Land Acquisition Costs	\$0	\$0		\$0
Capital Equipment	\$0	\$0		\$0
Other Equipment/Tools	\$0	\$0		\$0
Supplies/Materials	\$25,100	\$0		\$25,100
DNR IDP	\$0	\$0		\$0
Total	\$8,309,600	\$0		\$8,309,600

Personnel

Position	FTE	Over # of years	LSOHC Request	Anticipated Leverage	Leverage Source	Total
Grant Manager	0.17	3.00	\$62,300	\$0		\$62,300
Fiscal Agent	0.07	3.00	\$14,600	\$0		\$14,600
Project Manager	0.07	3.00	\$12,400	\$0		\$12,400
Total	0.31	9.00	\$89,300	\$0		\$89,300

Amount of Request: \$8,309,600

Amount of Leverage: \$0

Leverage as a percent of the Request: 0.00%

DSS + Personnel: \$89,300

As a % of the total request: 1.07%

Easement Stewardship: \$0

As a % of the Easement Acquisition: -%

Does the amount in the contract line include R/E work?

There is no amount included for R/E work. This is a contract with Conservation Fund.

Describe and explain leverage source and confirmation of funds:

Does this proposal have the ability to be scalable? - Yes

Tell us how this project would be scaled and how administrative costs are affected, describe the "economy of scale" and how outputs would change with reduced funding, if applicable:

The total fee acquisition w/out PILT could be scaled and acres reduced. Our administrative costs could not be scaled as they are baseline costs for procurement of the land.

Output Tables

Table 1a. Acres by Resource Type

Type	Wetlands	Prairies	Forest	Habitats	Total
Restore	0	0	0	0	0
Protect in Fee with State PILT Liability	0	0	0	0	0
Protect in Fee W/O State PILT Liability	0	0	8,000	0	8,000
Protect in Easement	0	0	0	0	0
Enhance	0	0	0	0	0
Total	0	0	8,000	0	8,000

Table 2. Total Requested Funding by Resource Type

Type	Wetlands	Prairies	Forest	Habitats	Total
Restore	\$0	\$0	\$0	\$0	\$0
Protect in Fee with State PILT Liability	\$0	\$0	\$0	\$0	\$0
Protect in Fee W/O State PILT Liability	\$0	\$0	\$8,309,600	\$0	\$8,309,600
Protect in Easement	\$0	\$0	\$0	\$0	\$0
Enhance	\$0	\$0	\$0	\$0	\$0
Total	\$0	\$0	\$8,309,600	\$0	\$8,309,600

Table 3. Acres within each Ecological Section

Type	Metro/Urban	Forest/Prairie	SE Forest	Prairie	Northern Forest	Total
Restore	0	0	0	0	0	0
Protect in Fee with State PILT Liability	0	0	0	0	0	0
Protect in Fee W/O State PILT Liability	0	0	0	0	8,000	8,000
Protect in Easement	0	0	0	0	0	0
Enhance	0	0	0	0	0	0
Total	0	0	0	0	8,000	8,000

Table 4. Total Requested Funding within each Ecological Section

Type	Metro/Urban	Forest/Prairie	SE Forest	Prairie	Northern Forest	Total
Restore	\$0	\$0	\$0	\$0	\$0	\$0
Protect in Fee with State PILT Liability	\$0	\$0	\$0	\$0	\$0	\$0
Protect in Fee W/O State PILT Liability	\$0	\$0	\$0	\$0	\$8,309,600	\$8,309,600
Protect in Easement	\$0	\$0	\$0	\$0	\$0	\$0
Enhance	\$0	\$0	\$0	\$0	\$0	\$0
Total	\$0	\$0	\$0	\$0	\$8,309,600	\$8,309,600

Table 5. Average Cost per Acre by Resource Type

Type	Wetlands	Prairies	Forest	Habitats
Restore	\$0	\$0	\$0	\$0
Protect in Fee with State PILT Liability	\$0	\$0	\$0	\$0
Protect in Fee W/O State PILT Liability	\$0	\$0	\$1,039	\$0
Protect in Easement	\$0	\$0	\$0	\$0
Enhance	\$0	\$0	\$0	\$0

Table 6. Average Cost per Acre by Ecological Section

Type	Metro/Urban	Forest/Prairie	SE Forest	Prairie	Northern Forest
Restore	\$0	\$0	\$0	\$0	\$0
Protect in Fee with State PILT Liability	\$0	\$0	\$0	\$0	\$0
Protect in Fee W/O State PILT Liability	\$0	\$0	\$0	\$0	\$1,039
Protect in Easement	\$0	\$0	\$0	\$0	\$0
Enhance	\$0	\$0	\$0	\$0	\$0

Target Lake/Stream/River Feet or Miles

0

I have read and understand Section 15 of the Constitution of the State of Minnesota, Minnesota Statute 97A.056, and the Call for Funding Request. I certify I am authorized to submit this proposal and to the best of my knowledge the information provided is true and accurate.

Parcel List

Explain the process used to select, rank and prioritize the parcels:

The parcel list currently contains nearly all of Potlatch's parcels in St. Louis County so as not to exclude parcels that may have significant habitat value. Project partners and SLC Lands will work to significantly refine this list as they move forward on this project.

Section 1 - Restore / Enhance Parcel List

No parcels with an activity type restore or enhance.

Section 2 - Protect Parcel List

St. Louis

Name	TRDS	Acres	Est Cost	Existing Protection?	Hunting?	Fishing?
St. Louis County 1	05512217	40	\$40,000	No	No	No
St. Louis County 10	06412203	40	\$40,000	No	No	No
St. Louis County 100	06412221	40	\$40,000	No	No	No
St. Louis County 1000	06318202	31	\$30,950	No	No	No
St. Louis County 1001	06318202	40	\$39,710	No	No	No
St. Louis County 1002	06318202	40	\$40,000	No	No	No
St. Louis County 1003	06318202	40	\$40,000	No	No	No
St. Louis County 1004	06318218	54	\$53,890	No	No	No
St. Louis County 1005	06318227	31	\$30,910	No	No	No
St. Louis County 1006	06318227	40	\$40,000	No	No	No
St. Louis County 1007	06318228	40	\$40,000	No	No	No
St. Louis County 1008	06318228	40	\$40,000	No	No	No
St. Louis County 1009	06318228	40	\$40,000	No	No	No
St. Louis County 101	06412221	40	\$40,000	No	No	No
St. Louis County 1010	06318233	40	\$40,000	No	No	No
St. Louis County 1011	06318233	40	\$40,000	No	No	No
St. Louis County 1012	06318233	40	\$40,000	No	No	No
St. Louis County 1013	06318233	38	\$38,000	No	No	No
St. Louis County 1014	06318234	40	\$40,000	No	No	No
St. Louis County 1015	06418230	63	\$63,050	No	No	No
St. Louis County 1016	06418230	63	\$63,050	No	No	No
St. Louis County 1017	06418230	63	\$63,080	No	No	No
St. Louis County 1018	06418230	40	\$40,000	No	No	No
St. Louis County 1019	06418230	40	\$40,000	No	No	No
St. Louis County 102	06412221	40	\$40,000	No	No	No
St. Louis County 1020	06418230	40	\$40,000	No	No	No
St. Louis County 1021	06418231	40	\$40,000	No	No	No
St. Louis County 1022	06418231	40	\$40,000	No	No	No
St. Louis County 1023	06418231	62	\$62,390	No	No	No
St. Louis County 1024	06418231	40	\$40,000	No	No	No
St. Louis County 1025	06418231	40	\$40,000	No	No	No
St. Louis County 1026	06418231	40	\$40,000	No	No	No
St. Louis County 1027	06418232	40	\$40,000	No	No	No
St. Louis County 1028	06418234	40	\$40,000	No	No	No
St. Louis County 1029	06418235	40	\$40,000	No	No	No
St. Louis County 103	06412221	40	\$40,000	No	No	No
St. Louis County 1030	06418235	40	\$40,000	No	No	No
St. Louis County 1031	06418235	40	\$40,000	No	No	No
St. Louis County 1032	06418235	40	\$40,000	No	No	No
St. Louis County 1033	06418235	40	\$40,000	No	No	No
St. Louis County 1034	06418235	40	\$40,000	No	No	No
St. Louis County 1035	06418235	40	\$40,000	No	No	No
St. Louis County 1036	06418231	40	\$40,000	No	No	No
St. Louis County 1037	06418201	40	\$40,000	No	No	No
St. Louis County 1038	06418201	40	\$40,000	No	No	No
St. Louis County 1039	06418201	40	\$40,000	No	No	No
St. Louis County 104	06412221	40	\$40,000	No	No	No
St. Louis County 1040	06418201	40	\$40,000	No	No	No
St. Louis County 1041	06418201	40	\$40,000	No	No	No
St. Louis County 1042	06418201	40	\$40,000	No	No	No
St. Louis County 1043	06418202	49	\$48,800	No	No	No
St. Louis County 1044	06418202	40	\$40,000	No	No	No
St. Louis County 1045	06418205	40	\$40,000	No	No	No
St. Louis County 1046	06418207	40	\$40,000	No	No	No
St. Louis County 1047	06418207	40	\$40,000	No	No	No
St. Louis County 1048	06418207	61	\$61,210	No	No	No
St. Louis County 1049	06418207	61	\$61,290	No	No	No
St. Louis County 105	06412221	40	\$40,000	No	No	No
St. Louis County 1050	06418208	40	\$40,000	No	No	No

St. Louis County 1051	06418208	40	\$40,000	No	No	No
St. Louis County 1052	06418208	40	\$40,000	No	No	No
St. Louis County 1053	06418210	40	\$40,000	No	No	No
St. Louis County 1054	06418210	40	\$40,000	No	No	No
St. Louis County 1055	06418210	40	\$40,000	No	No	No
St. Louis County 1056	06418211	40	\$40,000	No	No	No
St. Louis County 1057	06418211	40	\$40,000	No	No	No
St. Louis County 1058	06418211	40	\$40,000	No	No	No
St. Louis County 1059	06418211	40	\$40,000	No	No	No
St. Louis County 106	05513223	40	\$40,000	No	No	No
St. Louis County 1060	06418211	40	\$40,000	No	No	No
St. Louis County 1061	06418212	40	\$40,000	No	No	No
St. Louis County 1062	06418212	40	\$39,750	No	No	No
St. Louis County 1063	06418212	20	\$20,000	No	No	No
St. Louis County 1064	06418213	40	\$40,000	No	No	No
St. Louis County 1065	06418213	40	\$40,000	No	No	No
St. Louis County 1066	06418213	40	\$40,000	No	No	No
St. Louis County 1067	06418214	40	\$40,000	No	No	No
St. Louis County 1068	06418215	40	\$40,000	No	No	No
St. Louis County 1069	06418215	40	\$40,000	No	No	No
St. Louis County 107	05413219	46	\$46,030	No	No	No
St. Louis County 1070	06418215	40	\$40,000	No	No	No
St. Louis County 1071	06418215	40	\$40,000	No	No	No
St. Louis County 1072	06418216	40	\$40,000	No	No	No
St. Louis County 1073	06418216	40	\$40,000	No	No	No
St. Louis County 1074	06418216	40	\$40,000	No	No	No
St. Louis County 1075	06418216	40	\$40,000	No	No	No
St. Louis County 1076	06418216	40	\$40,000	No	No	No
St. Louis County 1077	06418217	40	\$40,000	No	No	No
St. Louis County 1078	06418217	40	\$40,000	No	No	No
St. Louis County 1079	06418217	40	\$40,000	No	No	No
St. Louis County 108	05413230	40	\$40,000	No	No	No
St. Louis County 1080	06418217	40	\$40,000	No	No	No
St. Louis County 1081	06418222	40	\$40,000	No	No	No
St. Louis County 1082	06418222	40	\$40,000	No	No	No
St. Louis County 1083	06418223	40	\$40,000	No	No	No
St. Louis County 1084	06418223	40	\$40,000	No	No	No
St. Louis County 1085	06418223	40	\$40,000	No	No	No
St. Louis County 1086	06418223	40	\$40,000	No	No	No
St. Louis County 1087	06418223	40	\$40,000	No	No	No
St. Louis County 1088	06418224	40	\$40,000	No	No	No
St. Louis County 1089	06418224	40	\$40,000	No	No	No
St. Louis County 109	05413230	40	\$40,000	No	No	No
St. Louis County 1090	06418224	40	\$40,000	No	No	No
St. Louis County 1091	06418224	40	\$40,000	No	No	No
St. Louis County 1092	06418224	40	\$40,000	No	No	No
St. Louis County 1093	06418224	40	\$40,000	No	No	No
St. Louis County 1094	06418225	40	\$40,000	No	No	No
St. Louis County 1095	06418225	40	\$40,000	No	No	No
St. Louis County 1096	06418225	40	\$40,000	No	No	No
St. Louis County 1097	06418225	40	\$40,000	No	No	No
St. Louis County 1098	06418225	40	\$40,000	No	No	No
St. Louis County 1099	06418225	40	\$40,000	No	No	No
St. Louis County 11	06412203	40	\$40,000	No	No	No
St. Louis County 110	05413230	46	\$45,850	No	No	No
St. Louis County 1100	06418225	40	\$40,000	No	No	No
St. Louis County 1101	06418226	40	\$40,000	No	No	No
St. Louis County 1102	06418226	40	\$40,000	No	No	No
St. Louis County 1103	06418226	40	\$40,000	No	No	No
St. Louis County 1104	06418226	40	\$40,000	No	No	No
St. Louis County 1105	06418226	40	\$40,000	No	No	No
St. Louis County 1106	06518225	40	\$40,000	No	No	No

St. Louis County 1107	06518225	40	\$40,000	No	No	No
St. Louis County 1108	06518226	40	\$40,000	No	No	No
St. Louis County 1109	06518226	40	\$40,000	No	No	No
St. Louis County 111	05413230	46	\$45,740	No	No	No
St. Louis County 1110	06518226	40	\$40,000	No	No	No
St. Louis County 1111	06518226	40	\$40,000	No	No	No
St. Louis County 1112	06518234	40	\$40,000	No	No	No
St. Louis County 1113	06518234	40	\$40,000	No	No	No
St. Louis County 1114	06518234	40	\$40,000	No	No	No
St. Louis County 1115	06518234	40	\$40,000	No	No	No
St. Louis County 1116	06618201	40	\$40,000	No	No	No
St. Louis County 1117	06618201	40	\$40,000	No	No	No
St. Louis County 1118	05519201	40	\$40,210	No	No	No
St. Louis County 1119	05619202	40	\$40,000	No	No	No
St. Louis County 112	05613213	40	\$40,000	No	No	No
St. Louis County 1120	05619224	39	\$39,000	No	No	No
St. Louis County 1121	05619235	40	\$40,000	No	No	No
St. Louis County 1122	05619235	40	\$40,000	No	No	No
St. Louis County 1123	05619235	40	\$40,000	No	No	No
St. Louis County 1124	06119213	40	\$40,000	No	No	No
St. Louis County 1125	06119213	40	\$40,000	No	No	No
St. Louis County 1126	06119213	40	\$40,000	No	No	No
St. Louis County 1127	06119213	40	\$40,000	No	No	No
St. Louis County 1128	06119224	40	\$40,000	No	No	No
St. Louis County 1129	06119224	40	\$40,000	No	No	No
St. Louis County 113	05613213	40	\$40,000	No	No	No
St. Louis County 1130	06119224	40	\$40,000	No	No	No
St. Louis County 1131	06119224	40	\$40,000	No	No	No
St. Louis County 1132	06419218	38	\$37,600	No	No	No
St. Louis County 1133	06419234	40	\$40,000	No	No	No
St. Louis County 1134	06419234	40	\$40,000	No	No	No
St. Louis County 1135	05219216	40	\$40,000	No	No	No
St. Louis County 1136	05219217	20	\$19,550	No	No	No
St. Louis County 1137	05219217	38	\$38,350	No	No	No
St. Louis County 1138	05219217	40	\$40,000	No	No	No
St. Louis County 1139	05219217	40	\$40,000	No	No	No
St. Louis County 114	05813206	40	\$40,000	No	No	No
St. Louis County 1140	05219217	40	\$40,000	No	No	No
St. Louis County 1141	05219217	54	\$53,850	No	No	No
St. Louis County 1142	05219217	47	\$46,550	No	No	No
St. Louis County 1143	05219217	40	\$40,000	No	No	No
St. Louis County 1144	05219217	40	\$40,000	No	No	No
St. Louis County 1145	05219217	40	\$40,000	No	No	No
St. Louis County 1146	05219217	40	\$40,000	No	No	No
St. Louis County 1147	05219218	16	\$15,950	No	No	No
St. Louis County 1148	05219218	35	\$35,450	No	No	No
St. Louis County 1149	05219218	40	\$40,000	No	No	No
St. Louis County 115	05813206	40	\$40,000	No	No	No
St. Louis County 1150	05219218	40	\$40,000	No	No	No
St. Louis County 1151	05219219	40	\$40,000	No	No	No
St. Louis County 1152	05219219	40	\$40,000	No	No	No
St. Louis County 1153	05219219	40	\$40,000	No	No	No
St. Louis County 1154	05219219	40	\$40,000	No	No	No
St. Louis County 1155	05419205	40	\$40,000	No	No	No
St. Louis County 1156	05419228	40	\$40,000	No	No	No
St. Louis County 1157	05419233	40	\$40,000	No	No	No
St. Louis County 1158	05419233	40	\$40,000	No	No	No
St. Louis County 1159	05419233	40	\$40,000	No	No	No
St. Louis County 116	05813206	29	\$29,440	No	No	No
St. Louis County 1160	05419233	40	\$40,000	No	No	No
St. Louis County 1161	05519201	40	\$40,000	No	No	No
St. Louis County 1162	05519201	40	\$40,000	No	No	No

St. Louis County 1163	05519202	30	\$30,250	No	No	No
St. Louis County 1164	05519202	51	\$51,230	No	No	No
St. Louis County 1165	05519202	38	\$38,100	No	No	No
St. Louis County 1166	05519202	40	\$39,940	No	No	No
St. Louis County 1167	05519206	31	\$31,050	No	No	No
St. Louis County 1168	05519206	32	\$31,810	No	No	No
St. Louis County 1169	05519207	40	\$40,000	No	No	No
St. Louis County 117	05813207	29	\$28,750	No	No	No
St. Louis County 1170	05519208	40	\$40,000	No	No	No
St. Louis County 1171	05519208	40	\$40,000	No	No	No
St. Louis County 1172	05519208	40	\$40,000	No	No	No
St. Louis County 1173	05519208	40	\$40,000	No	No	No
St. Louis County 1174	05519208	40	\$40,000	No	No	No
St. Louis County 1175	05519208	40	\$40,000	No	No	No
St. Louis County 1176	05519208	40	\$40,000	No	No	No
St. Louis County 1177	05519208	40	\$40,000	No	No	No
St. Louis County 1178	05519208	40	\$40,000	No	No	No
St. Louis County 1179	05519208	40	\$40,000	No	No	No
St. Louis County 118	05813220	40	\$40,000	No	No	No
St. Louis County 1180	05519208	40	\$40,000	No	No	No
St. Louis County 1181	05519208	40	\$40,000	No	No	No
St. Louis County 1182	05519210	40	\$40,000	No	No	No
St. Louis County 1183	05519211	40	\$40,000	No	No	No
St. Louis County 1184	05519211	40	\$40,000	No	No	No
St. Louis County 1185	05519211	34	\$34,100	No	No	No
St. Louis County 1186	05519211	32	\$31,530	No	No	No
St. Louis County 1187	05519211	39	\$39,100	No	No	No
St. Louis County 1188	05519214	40	\$40,000	No	No	No
St. Louis County 1189	05519214	40	\$40,000	No	No	No
St. Louis County 119	06013210	40	\$40,000	No	No	No
St. Louis County 1190	05519214	40	\$40,000	No	No	No
St. Louis County 1191	05519214	40	\$40,000	No	No	No
St. Louis County 1192	05519214	40	\$40,000	No	No	No
St. Louis County 1193	05519214	40	\$40,000	No	No	No
St. Louis County 1194	05519214	40	\$40,000	No	No	No
St. Louis County 1195	05519214	40	\$40,000	No	No	No
St. Louis County 1196	05519214	40	\$40,000	No	No	No
St. Louis County 1197	05519214	40	\$40,000	No	No	No
St. Louis County 1198	05519214	40	\$40,000	No	No	No
St. Louis County 1199	05519214	40	\$40,000	No	No	No
St. Louis County 12	06412203	40	\$40,000	No	No	No
St. Louis County 120	06013210	40	\$40,000	No	No	No
St. Louis County 1200	05519216	40	\$40,000	No	No	No
St. Louis County 1201	05519216	40	\$40,000	No	No	No
St. Louis County 1202	05519217	40	\$40,000	No	No	No
St. Louis County 1203	05519219	40	\$40,000	No	No	No
St. Louis County 1204	05519219	40	\$40,000	No	No	No
St. Louis County 1205	05519219	40	\$40,000	No	No	No
St. Louis County 1206	05519220	40	\$40,000	No	No	No
St. Louis County 1207	05519220	40	\$40,000	No	No	No
St. Louis County 1208	05519220	40	\$40,000	No	No	No
St. Louis County 1209	05519220	40	\$40,000	No	No	No
St. Louis County 121	06013210	40	\$40,000	No	No	No
St. Louis County 1210	05519220	40	\$40,000	No	No	No
St. Louis County 1211	05519220	40	\$40,000	No	No	No
St. Louis County 1212	05519220	40	\$40,000	No	No	No
St. Louis County 1213	05519221	33	\$33,000	No	No	No
St. Louis County 1214	05519221	40	\$40,000	No	No	No
St. Louis County 1215	05519221	40	\$40,000	No	No	No
St. Louis County 1216	05519221	27	\$26,850	No	No	No
St. Louis County 1217	05519221	45	\$45,250	No	No	No
St. Louis County 1218	05519221	40	\$40,000	No	No	No

St. Louis County 1219	05519221	40	\$40,000	No	No	No
St. Louis County 122	06013211	40	\$40,000	No	No	No
St. Louis County 1220	05519221	40	\$40,000	No	No	No
St. Louis County 1221	05519221	26	\$25,750	No	No	No
St. Louis County 1222	05519221	55	\$54,600	No	No	No
St. Louis County 1223	05519221	28	\$27,750	No	No	No
St. Louis County 1224	05519221	40	\$40,000	No	No	No
St. Louis County 1225	05519221	40	\$40,000	No	No	No
St. Louis County 1226	05519226	40	\$40,000	No	No	No
St. Louis County 1227	05519226	40	\$40,000	No	No	No
St. Louis County 1228	05519228	40	\$40,000	No	No	No
St. Louis County 1229	05519228	40	\$40,000	No	No	No
St. Louis County 123	06013211	40	\$40,000	No	No	No
St. Louis County 1230	05519228	40	\$40,000	No	No	No
St. Louis County 1231	05519228	40	\$40,000	No	No	No
St. Louis County 1232	05519228	40	\$40,000	No	No	No
St. Louis County 1233	05519228	40	\$40,000	No	No	No
St. Louis County 1234	05519228	40	\$40,000	No	No	No
St. Louis County 1235	05519229	38	\$37,750	No	No	No
St. Louis County 1236	05519229	40	\$40,000	No	No	No
St. Louis County 1237	05519230	40	\$40,000	No	No	No
St. Louis County 1238	05519230	40	\$40,000	No	No	No
St. Louis County 1239	05519230	40	\$40,000	No	No	No
St. Louis County 124	06013211	40	\$40,000	No	No	No
St. Louis County 1240	05519230	40	\$40,000	No	No	No
St. Louis County 1241	05519230	40	\$40,000	No	No	No
St. Louis County 1242	05519233	40	\$40,000	No	No	No
St. Louis County 1243	05519233	40	\$40,000	No	No	No
St. Louis County 1244	05519233	40	\$40,000	No	No	No
St. Louis County 1245	05519233	40	\$40,000	No	No	No
St. Louis County 1246	05519233	40	\$40,000	No	No	No
St. Louis County 1247	05519233	40	\$40,000	No	No	No
St. Louis County 1248	05519233	40	\$40,000	No	No	No
St. Louis County 1249	05519233	40	\$40,000	No	No	No
St. Louis County 125	06013211	40	\$40,000	No	No	No
St. Louis County 1250	05519233	40	\$40,000	No	No	No
St. Louis County 1251	05519233	40	\$40,000	No	No	No
St. Louis County 1252	05519233	40	\$40,000	No	No	No
St. Louis County 1253	05519233	40	\$40,000	No	No	No
St. Louis County 1254	05519233	40	\$40,000	No	No	No
St. Louis County 1255	05519234	40	\$40,000	No	No	No
St. Louis County 1256	05519234	40	\$40,000	No	No	No
St. Louis County 1257	05519234	40	\$40,000	No	No	No
St. Louis County 1258	05519234	40	\$40,000	No	No	No
St. Louis County 1259	05519234	40	\$40,000	No	No	No
St. Louis County 126	06013211	40	\$40,000	No	No	No
St. Louis County 1260	05519234	40	\$40,000	No	No	No
St. Louis County 1261	05519234	40	\$40,000	No	No	No
St. Louis County 1262	05519220	20	\$19,500	No	No	No
St. Louis County 1263	05519220	15	\$15,250	No	No	No
St. Louis County 1264	05819226	40	\$40,000	No	No	No
St. Louis County 1265	05819226	40	\$40,000	No	No	No
St. Louis County 1266	05919203	40	\$40,000	No	No	No
St. Louis County 1267	05919203	40	\$40,000	No	No	No
St. Louis County 1268	05919203	40	\$40,000	No	No	No
St. Louis County 1269	05919203	40	\$40,000	No	No	No
St. Louis County 127	06013211	40	\$40,000	No	No	No
St. Louis County 1270	05919204	40	\$40,000	No	No	No
St. Louis County 1271	05919204	40	\$40,000	No	No	No
St. Louis County 1272	05919204	40	\$40,000	No	No	No
St. Louis County 1273	05919207	43	\$42,930	No	No	No
St. Louis County 1274	05919207	44	\$43,500	No	No	No

St. Louis County 1275	05919207	44	\$44,070	No	No	No
St. Louis County 1276	05919209	40	\$40,000	No	No	No
St. Louis County 1277	05919210	40	\$40,000	No	No	No
St. Louis County 1278	05919217	40	\$40,000	No	No	No
St. Louis County 1279	05919217	40	\$40,000	No	No	No
St. Louis County 128	06013211	40	\$40,000	No	No	No
St. Louis County 1280	06019201	40	\$40,000	No	No	No
St. Louis County 1281	06019201	40	\$40,000	No	No	No
St. Louis County 1282	06019209	40	\$40,000	No	No	No
St. Louis County 1283	06019209	40	\$40,000	No	No	No
St. Louis County 1284	06019209	40	\$40,000	No	No	No
St. Louis County 1285	06019209	40	\$40,000	No	No	No
St. Louis County 1286	06019209	40	\$40,000	No	No	No
St. Louis County 1287	06019211	40	\$40,000	No	No	No
St. Louis County 1288	06019211	40	\$40,000	No	No	No
St. Louis County 1289	06019211	40	\$40,000	No	No	No
St. Louis County 129	06013211	40	\$40,000	No	No	No
St. Louis County 1290	06019211	40	\$40,000	No	No	No
St. Louis County 1291	06019212	40	\$40,000	No	No	No
St. Louis County 1292	06019212	40	\$40,000	No	No	No
St. Louis County 1293	06019212	40	\$40,000	No	No	No
St. Louis County 1294	06019212	40	\$40,000	No	No	No
St. Louis County 1295	06019223	40	\$40,000	No	No	No
St. Louis County 1296	06019223	40	\$40,000	No	No	No
St. Louis County 1297	06019224	20	\$20,000	No	No	No
St. Louis County 1298	06019224	40	\$40,000	No	No	No
St. Louis County 1299	06019225	40	\$40,000	No	No	No
St. Louis County 13	06412203	40	\$40,000	No	No	No
St. Louis County 130	06013211	40	\$40,000	No	No	No
St. Louis County 1300	06019226	40	\$40,000	No	No	No
St. Louis County 1301	06019226	40	\$40,000	No	No	No
St. Louis County 1302	06019226	40	\$40,000	No	No	No
St. Louis County 1303	06019226	40	\$40,000	No	No	No
St. Louis County 1304	06019226	40	\$40,000	No	No	No
St. Louis County 1305	06019235	40	\$40,000	No	No	No
St. Louis County 1306	06019235	40	\$40,000	No	No	No
St. Louis County 1307	06019236	40	\$40,000	No	No	No
St. Louis County 1308	06019201	43	\$42,520	No	No	No
St. Louis County 1309	06019201	40	\$40,000	No	No	No
St. Louis County 131	06013211	40	\$40,000	No	No	No
St. Louis County 1310	06019201	40	\$40,000	No	No	No
St. Louis County 1311	06019235	40	\$40,000	No	No	No
St. Louis County 1312	06019235	40	\$40,000	No	No	No
St. Louis County 1313	06119229	40	\$40,000	No	No	No
St. Louis County 1314	06119229	40	\$40,000	No	No	No
St. Louis County 1315	06119230	40	\$40,000	No	No	No
St. Louis County 1316	06119230	40	\$40,000	No	No	No
St. Louis County 1317	06219208	38	\$38,000	No	No	No
St. Louis County 1318	06219208	40	\$40,000	No	No	No
St. Louis County 1319	06219208	40	\$40,000	No	No	No
St. Louis County 132	06013214	40	\$40,000	No	No	No
St. Louis County 1320	06219214	21	\$20,750	No	No	No
St. Louis County 1321	06219214	40	\$40,000	No	No	No
St. Louis County 1322	06219217	40	\$40,000	No	No	No
St. Louis County 1323	06219217	40	\$40,000	No	No	No
St. Louis County 1324	06219220	40	\$40,000	No	No	No
St. Louis County 1325	06219220	40	\$40,000	No	No	No
St. Louis County 1326	06219224	40	\$40,000	No	No	No
St. Louis County 1327	06219224	40	\$40,000	No	No	No
St. Louis County 1328	06219224	40	\$40,000	No	No	No
St. Louis County 1329	06319231	40	\$40,000	No	No	No
St. Louis County 133	06013214	40	\$40,000	No	No	No

St. Louis County 1330	06319232	40	\$40,000	No	No	No
St. Louis County 1331	06319203	40	\$40,000	No	No	No
St. Louis County 1332	06319203	40	\$40,000	No	No	No
St. Louis County 1333	06319205	40	\$40,000	No	No	No
St. Louis County 1334	06319205	40	\$40,000	No	No	No
St. Louis County 1335	06319205	40	\$40,000	No	No	No
St. Louis County 1336	06319204	40	\$40,000	No	No	No
St. Louis County 1337	06319205	20	\$20,000	No	No	No
St. Louis County 1338	06319208	40	\$40,000	No	No	No
St. Louis County 1339	06319208	40	\$40,000	No	No	No
St. Louis County 134	06013214	40	\$40,000	No	No	No
St. Louis County 1340	06519222	15	\$15,200	No	No	No
St. Louis County 1341	06420213	30	\$30,300	No	No	No
St. Louis County 1342	06420213	40	\$40,000	No	No	No
St. Louis County 1343	06420213	40	\$40,000	No	No	No
St. Louis County 1344	06420214	40	\$40,000	No	No	No
St. Louis County 1345	05020210	40	\$40,000	No	No	No
St. Louis County 1346	05020210	40	\$40,000	No	No	No
St. Louis County 1347	05020210	40	\$40,000	No	No	No
St. Louis County 1348	05020210	40	\$40,000	No	No	No
St. Louis County 1349	05020210	40	\$40,000	No	No	No
St. Louis County 135	06013214	40	\$40,000	No	No	No
St. Louis County 1350	05020210	40	\$40,000	No	No	No
St. Louis County 1351	05020210	40	\$40,000	No	No	No
St. Louis County 1352	05020217	40	\$40,000	No	No	No
St. Louis County 1353	05020217	40	\$40,000	No	No	No
St. Louis County 1354	05020217	40	\$40,000	No	No	No
St. Louis County 1355	05020217	38	\$37,500	No	No	No
St. Louis County 1356	05320213	40	\$40,000	No	No	No
St. Louis County 1357	05320213	40	\$40,000	No	No	No
St. Louis County 1358	05520201	39	\$39,120	No	No	No
St. Louis County 1359	05520201	40	\$40,000	No	No	No
St. Louis County 136	06013214	40	\$40,000	No	No	No
St. Louis County 1360	05520201	40	\$40,000	No	No	No
St. Louis County 1361	05520201	40	\$40,000	No	No	No
St. Louis County 1362	05520201	40	\$40,000	No	No	No
St. Louis County 1363	05520202	40	\$40,000	No	No	No
St. Louis County 1364	05520211	40	\$40,000	No	No	No
St. Louis County 1365	05520211	40	\$40,000	No	No	No
St. Louis County 1366	05520212	40	\$40,000	No	No	No
St. Louis County 1367	05520212	40	\$40,000	No	No	No
St. Louis County 1368	05520212	40	\$40,000	No	No	No
St. Louis County 1369	05620227	40	\$40,000	No	No	No
St. Louis County 137	06013215	40	\$40,000	No	No	No
St. Louis County 1370	05620227	40	\$40,000	No	No	No
St. Louis County 1371	05620227	40	\$40,000	No	No	No
St. Louis County 1372	05820201	40	\$40,000	No	No	No
St. Louis County 1373	05820201	40	\$40,000	No	No	No
St. Louis County 1374	05820201	40	\$40,000	No	No	No
St. Louis County 1375	05820212	40	\$40,000	No	No	No
St. Louis County 1376	05820212	40	\$40,000	No	No	No
St. Louis County 1377	05820212	40	\$40,000	No	No	No
St. Louis County 1378	05820212	40	\$40,000	No	No	No
St. Louis County 1379	05920208	40	\$40,000	No	No	No
St. Louis County 138	06013215	40	\$40,000	No	No	No
St. Louis County 1380	05920207	40	\$40,000	No	No	No
St. Louis County 1381	05920222	40	\$40,000	No	No	No
St. Louis County 1382	05920223	40	\$40,000	No	No	No
St. Louis County 1383	05920223	40	\$40,000	No	No	No
St. Louis County 1384	05920227	40	\$40,000	No	No	No
St. Louis County 1385	05920227	40	\$40,000	No	No	No
St. Louis County 1386	05920234	40	\$40,000	No	No	No

St. Louis County 1387	05920205	40	\$39,860	No	No	No
St. Louis County 1388	05920205	40	\$39,900	No	No	No
St. Louis County 1389	05920205	40	\$39,940	No	No	No
St. Louis County 139	06013215	40	\$40,000	No	No	No
St. Louis County 1390	05920205	40	\$39,980	No	No	No
St. Louis County 1391	05920205	40	\$40,000	No	No	No
St. Louis County 1392	05920205	40	\$40,000	No	No	No
St. Louis County 1393	05920205	40	\$40,000	No	No	No
St. Louis County 1394	05920205	40	\$40,000	No	No	No
St. Louis County 1395	05920205	40	\$40,000	No	No	No
St. Louis County 1396	05920205	40	\$40,000	No	No	No
St. Louis County 1397	05920205	40	\$40,000	No	No	No
St. Louis County 1398	05920205	40	\$40,000	No	No	No
St. Louis County 1399	06020203	41	\$40,680	No	No	No
St. Louis County 14	06412203	40	\$40,000	No	No	No
St. Louis County 140	06013215	40	\$40,000	No	No	No
St. Louis County 1400	06020204	40	\$40,000	No	No	No
St. Louis County 1401	06020206	44	\$43,930	No	No	No
St. Louis County 1402	06020206	44	\$44,230	No	No	No
St. Louis County 1403	06020206	45	\$44,530	No	No	No
St. Louis County 1404	06020206	50	\$49,720	No	No	No
St. Louis County 1405	06020206	43	\$42,900	No	No	No
St. Louis County 1406	06020206	40	\$40,000	No	No	No
St. Louis County 1407	06020206	40	\$40,000	No	No	No
St. Louis County 1408	06020206	40	\$40,000	No	No	No
St. Louis County 1409	06020206	40	\$40,000	No	No	No
St. Louis County 141	06013215	40	\$40,000	No	No	No
St. Louis County 1410	06020206	40	\$40,000	No	No	No
St. Louis County 1411	06020206	40	\$40,000	No	No	No
St. Louis County 1412	06020206	40	\$40,000	No	No	No
St. Louis County 1413	06020207	40	\$40,000	No	No	No
St. Louis County 1414	06020207	40	\$40,000	No	No	No
St. Louis County 1415	06020207	40	\$40,000	No	No	No
St. Louis County 1416	06020207	40	\$40,000	No	No	No
St. Louis County 1417	06020207	40	\$40,000	No	No	No
St. Louis County 1418	06020207	40	\$40,000	No	No	No
St. Louis County 1419	06020207	40	\$40,000	No	No	No
St. Louis County 142	06013215	40	\$40,000	No	No	No
St. Louis County 1420	06020205	40	\$40,000	No	No	No
St. Louis County 1421	06020208	40	\$40,000	No	No	No
St. Louis County 1422	06020212	40	\$40,000	No	No	No
St. Louis County 1423	06020212	40	\$40,000	No	No	No
St. Louis County 1424	06020212	40	\$40,000	No	No	No
St. Louis County 1425	06020213	40	\$40,000	No	No	No
St. Louis County 1426	06020213	40	\$40,000	No	No	No
St. Louis County 1427	06020214	35	\$35,000	No	No	No
St. Louis County 1428	06020215	40	\$40,000	No	No	No
St. Louis County 1429	06020215	40	\$40,000	No	No	No
St. Louis County 143	06013215	40	\$40,000	No	No	No
St. Louis County 1430	06020218	40	\$40,000	No	No	No
St. Louis County 1431	06020218	40	\$40,000	No	No	No
St. Louis County 1432	06020218	40	\$40,000	No	No	No
St. Louis County 1433	06020218	39	\$38,600	No	No	No
St. Louis County 1434	06020218	40	\$40,000	No	No	No
St. Louis County 1435	06020218	40	\$40,000	No	No	No
St. Louis County 1436	06020218	40	\$40,000	No	No	No
St. Louis County 1437	06020218	40	\$40,000	No	No	No
St. Louis County 1438	06020218	40	\$40,000	No	No	No
St. Louis County 1439	06020218	40	\$40,000	No	No	No
St. Louis County 144	06013215	40	\$40,000	No	No	No
St. Louis County 1440	06020218	39	\$39,270	No	No	No
St. Louis County 1441	06020218	40	\$40,000	No	No	No

St. Louis County 1442	06020219	40	\$40,000	No	No	No
St. Louis County 1443	06020220	40	\$40,000	No	No	No
St. Louis County 1444	06020220	40	\$40,000	No	No	No
St. Louis County 1445	06020220	40	\$40,000	No	No	No
St. Louis County 1446	06020224	40	\$40,000	No	No	No
St. Louis County 1447	06020224	40	\$40,000	No	No	No
St. Louis County 1448	06020225	24	\$24,340	No	No	No
St. Louis County 1449	06020225	31	\$30,870	No	No	No
St. Louis County 145	06013217	40	\$40,000	No	No	No
St. Louis County 1450	06020225	40	\$40,000	No	No	No
St. Louis County 1451	06020225	40	\$40,000	No	No	No
St. Louis County 1452	06020225	40	\$40,000	No	No	No
St. Louis County 1453	06020229	40	\$40,000	No	No	No
St. Louis County 1454	06020229	40	\$40,000	No	No	No
St. Louis County 1455	06020229	40	\$40,000	No	No	No
St. Louis County 1456	06020229	40	\$40,000	No	No	No
St. Louis County 1457	06020229	40	\$40,000	No	No	No
St. Louis County 1458	06020229	40	\$40,000	No	No	No
St. Louis County 1459	06020229	40	\$40,000	No	No	No
St. Louis County 146	06013217	40	\$40,000	No	No	No
St. Louis County 1460	06020230	39	\$38,670	No	No	No
St. Louis County 1461	06020230	40	\$40,000	No	No	No
St. Louis County 1462	06020230	40	\$40,000	No	No	No
St. Louis County 1463	06020231	40	\$40,000	No	No	No
St. Louis County 1464	06020231	40	\$40,000	No	No	No
St. Louis County 1465	06020231	40	\$40,000	No	No	No
St. Louis County 1466	06020231	40	\$40,000	No	No	No
St. Louis County 1467	06020232	40	\$40,000	No	No	No
St. Louis County 1468	06020232	40	\$40,000	No	No	No
St. Louis County 1469	06020232	40	\$40,000	No	No	No
St. Louis County 147	06013217	40	\$40,000	No	No	No
St. Louis County 1470	06020232	40	\$40,000	No	No	No
St. Louis County 1471	06020232	40	\$40,000	No	No	No
St. Louis County 1472	06020232	40	\$40,000	No	No	No
St. Louis County 1473	06020232	40	\$40,000	No	No	No
St. Louis County 1474	06020232	40	\$40,000	No	No	No
St. Louis County 1475	06020232	40	\$40,000	No	No	No
St. Louis County 1476	06020232	40	\$40,000	No	No	No
St. Louis County 1477	06020232	40	\$40,000	No	No	No
St. Louis County 1478	06020232	40	\$40,000	No	No	No
St. Louis County 1479	06020232	40	\$40,000	No	No	No
St. Louis County 148	06013219	20	\$20,000	No	No	No
St. Louis County 1480	06020232	40	\$40,000	No	No	No
St. Louis County 1481	06020232	40	\$40,000	No	No	No
St. Louis County 1482	06020233	40	\$40,000	No	No	No
St. Louis County 1483	06020233	40	\$40,000	No	No	No
St. Louis County 1484	06020233	40	\$40,000	No	No	No
St. Louis County 1485	06020233	40	\$40,000	No	No	No
St. Louis County 1486	06020234	40	\$40,000	No	No	No
St. Louis County 1487	06020234	40	\$40,000	No	No	No
St. Louis County 1488	06020234	40	\$40,000	No	No	No
St. Louis County 1489	06120217	36	\$35,500	No	No	No
St. Louis County 149	06013219	40	\$40,000	No	No	No
St. Louis County 1490	06120221	38	\$37,500	No	No	No
St. Louis County 1491	06120221	40	\$40,000	No	No	No
St. Louis County 1492	06120221	40	\$40,000	No	No	No
St. Louis County 1493	06120225	40	\$40,000	No	No	No
St. Louis County 1494	06120225	40	\$40,000	No	No	No
St. Louis County 1495	06120226	40	\$40,000	No	No	No
St. Louis County 1496	06120226	40	\$40,000	No	No	No
St. Louis County 1497	06120226	40	\$40,000	No	No	No
St. Louis County 1498	06120226	40	\$40,000	No	No	No

St. Louis County 1499	06120227	20	\$20,000	No	No	No
St. Louis County 15	06412203	40	\$40,000	No	No	No
St. Louis County 150	06013219	40	\$40,000	No	No	No
St. Louis County 1500	06120234	40	\$40,000	No	No	No
St. Louis County 1501	06120235	40	\$40,000	No	No	No
St. Louis County 1502	06220201	44	\$44,050	No	No	No
St. Louis County 1503	06220201	45	\$45,250	No	No	No
St. Louis County 1504	06220201	40	\$40,000	No	No	No
St. Louis County 1505	06220201	40	\$40,000	No	No	No
St. Louis County 1506	06220202	40	\$40,000	No	No	No
St. Louis County 1507	06220206	40	\$40,000	No	No	No
St. Louis County 1508	06220206	40	\$40,000	No	No	No
St. Louis County 1509	06220206	40	\$40,000	No	No	No
St. Louis County 151	06013219	40	\$40,000	No	No	No
St. Louis County 1510	06220206	34	\$33,850	No	No	No
St. Louis County 1511	06220206	34	\$33,800	No	No	No
St. Louis County 1512	06220206	40	\$40,000	No	No	No
St. Louis County 1513	06220207	40	\$40,000	No	No	No
St. Louis County 1514	06220208	40	\$40,000	No	No	No
St. Louis County 1515	06220208	40	\$40,000	No	No	No
St. Louis County 1516	06220208	13	\$13,030	No	No	No
St. Louis County 1517	06220213	44	\$44,090	No	No	No
St. Louis County 1518	06220213	40	\$40,000	No	No	No
St. Louis County 1519	06220224	40	\$40,000	No	No	No
St. Louis County 152	06013220	40	\$40,000	No	No	No
St. Louis County 1520	06220230	40	\$40,000	No	No	No
St. Louis County 1521	06220230	33	\$33,470	No	No	No
St. Louis County 1522	06220230	34	\$33,540	No	No	No
St. Louis County 1523	06220230	40	\$40,000	No	No	No
St. Louis County 1524	06220236	39	\$39,320	No	No	No
St. Louis County 1525	06220236	40	\$40,000	No	No	No
St. Louis County 1526	06220236	44	\$44,290	No	No	No
St. Louis County 1527	06320203	25	\$25,050	No	No	No
St. Louis County 1528	06320203	40	\$40,000	No	No	No
St. Louis County 1529	06320203	30	\$30,000	No	No	No
St. Louis County 153	06013220	40	\$40,000	No	No	No
St. Louis County 1530	06320226	40	\$40,000	No	No	No
St. Louis County 1531	06320227	40	\$40,000	No	No	No
St. Louis County 1532	06320229	40	\$40,000	No	No	No
St. Louis County 1533	06320229	40	\$40,000	No	No	No
St. Louis County 1534	06320229	40	\$40,000	No	No	No
St. Louis County 1535	06320229	40	\$40,000	No	No	No
St. Louis County 1536	06320229	40	\$40,000	No	No	No
St. Louis County 1537	06320206	40	\$40,000	No	No	No
St. Louis County 1538	06320206	28	\$27,540	No	No	No
St. Louis County 1539	06320215	40	\$40,000	No	No	No
St. Louis County 154	06013220	40	\$40,000	No	No	No
St. Louis County 1540	06320215	40	\$40,000	No	No	No
St. Louis County 1541	06320216	40	\$40,000	No	No	No
St. Louis County 1542	06320216	40	\$40,000	No	No	No
St. Louis County 1543	06320216	40	\$40,000	No	No	No
St. Louis County 1544	06320217	40	\$40,000	No	No	No
St. Louis County 1545	06320220	20	\$20,000	No	No	No
St. Louis County 1546	06320220	40	\$40,000	No	No	No
St. Louis County 1547	06320221	40	\$40,000	No	No	No
St. Louis County 1548	06320221	40	\$40,000	No	No	No
St. Louis County 1549	06320221	40	\$40,000	No	No	No
St. Louis County 155	06013220	40	\$40,000	No	No	No
St. Louis County 1550	06320221	40	\$40,000	No	No	No
St. Louis County 1551	06320221	40	\$40,000	No	No	No
St. Louis County 1552	06320221	40	\$40,000	No	No	No
St. Louis County 1553	06320221	40	\$40,000	No	No	No

St. Louis County 1554	06320221	40	\$40,000	No	No	No
St. Louis County 1555	06320225	40	\$40,000	No	No	No
St. Louis County 1556	06320225	40	\$40,000	No	No	No
St. Louis County 1557	06320226	40	\$40,000	No	No	No
St. Louis County 1558	06320226	40	\$40,000	No	No	No
St. Louis County 1559	06320226	35	\$34,750	No	No	No
St. Louis County 156	06013220	40	\$40,000	No	No	No
St. Louis County 1560	06320226	40	\$40,000	No	No	No
St. Louis County 1561	06320201	40	\$40,000	No	No	No
St. Louis County 1562	06320221	40	\$40,000	No	No	No
St. Louis County 1563	06320205	52	\$52,150	No	No	No
St. Louis County 1564	06420214	40	\$40,000	No	No	No
St. Louis County 1565	06420214	35	\$35,000	No	No	No
St. Louis County 1566	06420214	40	\$40,000	No	No	No
St. Louis County 1567	06420219	40	\$40,000	No	No	No
St. Louis County 1568	06420219	40	\$40,000	No	No	No
St. Louis County 1569	06420219	40	\$40,000	No	No	No
St. Louis County 157	06013220	40	\$40,000	No	No	No
St. Louis County 1570	06420219	40	\$40,000	No	No	No
St. Louis County 1571	06420219	40	\$40,000	No	No	No
St. Louis County 1572	06420219	40	\$40,000	No	No	No
St. Louis County 1573	06420219	40	\$40,000	No	No	No
St. Louis County 1574	06420219	35	\$35,170	No	No	No
St. Louis County 1575	06420219	40	\$40,000	No	No	No
St. Louis County 1576	06420219	40	\$40,000	No	No	No
St. Louis County 1577	06420219	40	\$40,000	No	No	No
St. Louis County 1578	06420220	40	\$40,000	No	No	No
St. Louis County 1579	06420220	40	\$40,000	No	No	No
St. Louis County 158	06013220	40	\$40,000	No	No	No
St. Louis County 1580	06420220	40	\$40,000	No	No	No
St. Louis County 1581	06420220	40	\$40,000	No	No	No
St. Louis County 1582	06420220	40	\$40,000	No	No	No
St. Louis County 1583	06420220	40	\$40,000	No	No	No
St. Louis County 1584	06420220	40	\$40,000	No	No	No
St. Louis County 1585	06420220	40	\$40,000	No	No	No
St. Louis County 1586	06420220	40	\$40,000	No	No	No
St. Louis County 1587	06420220	40	\$40,000	No	No	No
St. Louis County 1588	06420220	40	\$40,000	No	No	No
St. Louis County 1589	06420223	35	\$35,000	No	No	No
St. Louis County 159	06013220	40	\$40,000	No	No	No
St. Louis County 1590	06420224	40	\$40,000	No	No	No
St. Louis County 1591	06420224	40	\$40,000	No	No	No
St. Louis County 1592	06420224	40	\$40,000	No	No	No
St. Louis County 1593	06420224	40	\$40,000	No	No	No
St. Louis County 1594	06420229	40	\$40,000	No	No	No
St. Louis County 1595	06420229	40	\$40,000	No	No	No
St. Louis County 1596	06420229	40	\$40,000	No	No	No
St. Louis County 1597	06420229	40	\$40,000	No	No	No
St. Louis County 1598	06420229	40	\$40,000	No	No	No
St. Louis County 1599	06420230	40	\$40,000	No	No	No
St. Louis County 16	06412203	40	\$40,000	No	No	No
St. Louis County 160	06013220	40	\$40,000	No	No	No
St. Louis County 1600	06420230	40	\$40,000	No	No	No
St. Louis County 1601	06420230	40	\$40,000	No	No	No
St. Louis County 1602	06420230	40	\$40,000	No	No	No
St. Louis County 1603	06420230	40	\$40,000	No	No	No
St. Louis County 1604	06420230	40	\$40,000	No	No	No
St. Louis County 1605	06420230	40	\$40,000	No	No	No
St. Louis County 1606	06420230	40	\$40,000	No	No	No
St. Louis County 1607	06420230	40	\$40,000	No	No	No
St. Louis County 1608	06420230	40	\$40,000	No	No	No
St. Louis County 1609	06420230	40	\$40,000	No	No	No

St. Louis County 161	06013220	40	\$40,000	No	No	No
St. Louis County 1610	06420230	40	\$40,000	No	No	No
St. Louis County 1611	06421233	40	\$40,000	No	No	No
St. Louis County 1612	06421219	37	\$36,630	No	No	No
St. Louis County 1613	06421219	37	\$37,090	No	No	No
St. Louis County 1614	06421219	40	\$40,000	No	No	No
St. Louis County 1615	06421219	40	\$40,000	No	No	No
St. Louis County 1616	06421219	40	\$40,000	No	No	No
St. Louis County 1617	06421219	40	\$40,000	No	No	No
St. Louis County 1618	06421219	40	\$40,000	No	No	No
St. Louis County 1619	06421219	38	\$37,550	No	No	No
St. Louis County 162	06013220	40	\$40,000	No	No	No
St. Louis County 1620	06421219	38	\$38,010	No	No	No
St. Louis County 1621	06421219	40	\$40,000	No	No	No
St. Louis County 1622	06421219	40	\$40,000	No	No	No
St. Louis County 1623	06421219	40	\$40,000	No	No	No
St. Louis County 1624	06421220	40	\$40,000	No	No	No
St. Louis County 1625	06421220	40	\$40,000	No	No	No
St. Louis County 1626	06421220	40	\$40,000	No	No	No
St. Louis County 1627	06421220	40	\$40,000	No	No	No
St. Louis County 1628	06421220	40	\$40,000	No	No	No
St. Louis County 1629	06421220	40	\$40,000	No	No	No
St. Louis County 163	06013220	40	\$40,000	No	No	No
St. Louis County 1630	06421220	40	\$40,000	No	No	No
St. Louis County 1631	06421220	40	\$40,000	No	No	No
St. Louis County 1632	06421221	17	\$17,320	No	No	No
St. Louis County 1633	06421221	40	\$40,000	No	No	No
St. Louis County 1634	05821218	40	\$40,000	No	No	No
St. Louis County 1635	05821219	40	\$40,000	No	No	No
St. Louis County 1636	05821219	40	\$40,000	No	No	No
St. Louis County 1637	05921201	41	\$41,150	No	No	No
St. Louis County 1638	05921201	40	\$40,000	No	No	No
St. Louis County 1639	05921201	40	\$40,000	No	No	No
St. Louis County 164	06013220	40	\$40,000	No	No	No
St. Louis County 1640	05921202	41	\$41,280	No	No	No
St. Louis County 1641	05921214	40	\$40,000	No	No	No
St. Louis County 1642	05921214	40	\$40,000	No	No	No
St. Louis County 1643	05921214	40	\$40,000	No	No	No
St. Louis County 1644	05921214	40	\$40,000	No	No	No
St. Louis County 1645	05921214	40	\$40,000	No	No	No
St. Louis County 1646	05921219	38	\$37,720	No	No	No
St. Louis County 1647	05921223	40	\$40,000	No	No	No
St. Louis County 1648	05921223	40	\$40,000	No	No	No
St. Louis County 1649	05921223	40	\$40,000	No	No	No
St. Louis County 165	06013220	40	\$40,000	No	No	No
St. Louis County 1650	06021224	40	\$40,000	No	No	No
St. Louis County 1651	06021224	40	\$40,000	No	No	No
St. Louis County 1652	06021224	40	\$40,000	No	No	No
St. Louis County 1653	06021224	40	\$40,000	No	No	No
St. Louis County 1654	06021225	40	\$40,000	No	No	No
St. Louis County 1655	06021227	40	\$40,000	No	No	No
St. Louis County 1656	06021227	40	\$40,000	No	No	No
St. Louis County 1657	06021227	40	\$40,000	No	No	No
St. Louis County 1658	06021201	40	\$40,000	No	No	No
St. Louis County 1659	06021203	40	\$40,000	No	No	No
St. Louis County 166	06013221	40	\$40,000	No	No	No
St. Louis County 1660	06021203	40	\$40,000	No	No	No
St. Louis County 1661	06021204	40	\$40,000	No	No	No
St. Louis County 1662	06021204	40	\$40,000	No	No	No
St. Louis County 1663	06021204	40	\$40,000	No	No	No
St. Louis County 1664	06021204	40	\$40,000	No	No	No
St. Louis County 1665	06021204	40	\$40,000	No	No	No

St. Louis County 1666	06021213	40	\$40,000	No	No	No
St. Louis County 1667	06021213	40	\$40,000	No	No	No
St. Louis County 1668	06021221	19	\$19,000	No	No	No
St. Louis County 1669	06021223	40	\$40,000	No	No	No
St. Louis County 167	06013221	40	\$40,000	No	No	No
St. Louis County 1670	06021223	40	\$40,000	No	No	No
St. Louis County 1671	06021223	40	\$40,000	No	No	No
St. Louis County 1672	06021224	40	\$40,000	No	No	No
St. Louis County 1673	06021224	40	\$40,000	No	No	No
St. Louis County 1674	06121229	40	\$40,000	No	No	No
St. Louis County 1675	06121229	40	\$40,000	No	No	No
St. Louis County 1676	06121229	40	\$40,000	No	No	No
St. Louis County 1677	06121232	40	\$40,000	No	No	No
St. Louis County 1678	06121212	40	\$40,000	No	No	No
St. Louis County 1679	06121212	40	\$40,000	No	No	No
St. Louis County 168	06013221	40	\$40,000	No	No	No
St. Louis County 1680	06121212	40	\$40,000	No	No	No
St. Louis County 1681	06121212	40	\$40,000	No	No	No
St. Louis County 1682	06121220	40	\$40,000	No	No	No
St. Louis County 1683	06121220	40	\$40,000	No	No	No
St. Louis County 1684	06121221	40	\$40,000	No	No	No
St. Louis County 1685	06121221	40	\$40,000	No	No	No
St. Louis County 1686	06121221	40	\$40,000	No	No	No
St. Louis County 1687	06121221	40	\$40,000	No	No	No
St. Louis County 1688	06121228	40	\$40,000	No	No	No
St. Louis County 1689	06121228	40	\$40,000	No	No	No
St. Louis County 169	06013221	40	\$40,000	No	No	No
St. Louis County 1690	06121228	40	\$40,000	No	No	No
St. Louis County 1691	06121228	40	\$40,000	No	No	No
St. Louis County 1692	06121228	40	\$40,000	No	No	No
St. Louis County 1693	06121228	40	\$40,000	No	No	No
St. Louis County 1694	06121228	40	\$40,000	No	No	No
St. Louis County 1695	06121228	40	\$40,000	No	No	No
St. Louis County 1696	06121229	40	\$40,000	No	No	No
St. Louis County 1697	06121229	40	\$40,000	No	No	No
St. Louis County 1698	06221201	32	\$32,370	No	No	No
St. Louis County 1699	06221201	40	\$40,000	No	No	No
St. Louis County 17	06412203	40	\$40,000	No	No	No
St. Louis County 170	06013221	40	\$40,000	No	No	No
St. Louis County 1700	06221201	37	\$37,230	No	No	No
St. Louis County 1701	06221204	40	\$40,490	No	No	No
St. Louis County 1702	06221204	41	\$40,570	No	No	No
St. Louis County 1703	06221210	40	\$40,000	No	No	No
St. Louis County 1704	06221230	38	\$38,480	No	No	No
St. Louis County 1705	06321201	40	\$40,000	No	No	No
St. Louis County 1706	06321201	40	\$40,000	No	No	No
St. Louis County 1707	06321201	40	\$40,000	No	No	No
St. Louis County 1708	06321210	40	\$40,000	No	No	No
St. Louis County 1709	06321210	40	\$40,000	No	No	No
St. Louis County 171	06013221	40	\$40,000	No	No	No
St. Louis County 1710	06321227	40	\$40,000	No	No	No
St. Louis County 1711	06321227	40	\$40,000	No	No	No
St. Louis County 1712	06321227	40	\$40,000	No	No	No
St. Louis County 1713	06321229	40	\$40,000	No	No	No
St. Louis County 1714	06321229	40	\$40,000	No	No	No
St. Louis County 1715	06321234	40	\$40,000	No	No	No
St. Louis County 1716	06321234	40	\$40,000	No	No	No
St. Louis County 1717	06321234	40	\$40,000	No	No	No
St. Louis County 1718	06321235	40	\$40,000	No	No	No
St. Louis County 1719	06321235	40	\$40,000	No	No	No
St. Louis County 172	06013221	40	\$40,000	No	No	No
St. Louis County 1720	06421221	40	\$40,000	No	No	No

St. Louis County 1721	06421221	40	\$40,000	No	No	No
St. Louis County 1722	06421221	40	\$40,000	No	No	No
St. Louis County 1723	06421221	18	\$17,950	No	No	No
St. Louis County 1724	06421221	19	\$18,590	No	No	No
St. Louis County 1725	06421221	40	\$40,000	No	No	No
St. Louis County 1726	06421221	40	\$40,000	No	No	No
St. Louis County 1727	06421221	40	\$40,000	No	No	No
St. Louis County 1728	06421221	40	\$40,000	No	No	No
St. Louis County 1729	06421221	19	\$19,220	No	No	No
St. Louis County 173	06013221	40	\$40,000	No	No	No
St. Louis County 1730	06421228	14	\$13,970	No	No	No
St. Louis County 1731	06421228	30	\$30,190	No	No	No
St. Louis County 1732	06421217	40	\$40,000	No	No	No
St. Louis County 1733	06421217	40	\$40,000	No	No	No
St. Louis County 1734	06421217	40	\$40,000	No	No	No
St. Louis County 1735	06421217	40	\$40,000	No	No	No
St. Louis County 1736	06421217	40	\$40,000	No	No	No
St. Louis County 1737	06421217	40	\$40,000	No	No	No
St. Louis County 1738	06421217	40	\$40,000	No	No	No
St. Louis County 1739	06421217	40	\$40,000	No	No	No
St. Louis County 174	06013221	40	\$40,000	No	No	No
St. Louis County 1740	06421217	40	\$40,000	No	No	No
St. Louis County 1741	06421217	40	\$40,000	No	No	No
St. Louis County 1742	06421218	40	\$40,000	No	No	No
St. Louis County 1743	06421218	40	\$40,000	No	No	No
St. Louis County 1744	06421218	40	\$40,000	No	No	No
St. Louis County 1745	06421218	42	\$41,910	No	No	No
St. Louis County 1746	06421218	40	\$40,000	No	No	No
St. Louis County 1747	06421218	40	\$40,000	No	No	No
St. Louis County 1748	06421218	40	\$40,000	No	No	No
St. Louis County 1749	06421218	40	\$40,000	No	No	No
St. Louis County 175	06013221	40	\$40,000	No	No	No
St. Louis County 1750	06421218	40	\$40,000	No	No	No
St. Louis County 1751	06421218	40	\$40,000	No	No	No
St. Louis County 1752	06421219	40	\$40,000	No	No	No
St. Louis County 1753	06421219	40	\$40,000	No	No	No
St. Louis County 1754	06421219	40	\$40,000	No	No	No
St. Louis County 1755	06421207	40	\$40,000	No	No	No
St. Louis County 1756	06421209	40	\$40,000	No	No	No
St. Louis County 1757	06421209	40	\$40,000	No	No	No
St. Louis County 1758	06421209	17	\$16,890	No	No	No
St. Louis County 1759	06421228	32	\$31,970	No	No	No
St. Louis County 176	06013229	40	\$40,000	No	No	No
St. Louis County 1760	06421229	33	\$32,880	No	No	No
St. Louis County 1761	06421229	33	\$32,910	No	No	No
St. Louis County 1762	06421229	33	\$32,950	No	No	No
St. Louis County 1763	06421229	33	\$32,980	No	No	No
St. Louis County 1764	06421229	40	\$40,000	No	No	No
St. Louis County 1765	06421229	40	\$40,000	No	No	No
St. Louis County 1766	06421229	40	\$40,000	No	No	No
St. Louis County 1767	06421229	40	\$40,000	No	No	No
St. Louis County 1768	06421229	40	\$40,000	No	No	No
St. Louis County 1769	06421229	40	\$40,000	No	No	No
St. Louis County 177	06013229	40	\$40,000	No	No	No
St. Louis County 1770	06421230	32	\$32,200	No	No	No
St. Louis County 1771	06421230	32	\$32,200	No	No	No
St. Louis County 1772	06421230	30	\$30,300	No	No	No
St. Louis County 1773	06421230	30	\$30,300	No	No	No
St. Louis County 1774	06421231	40	\$40,000	No	No	No
St. Louis County 1775	06421231	40	\$40,000	No	No	No
St. Louis County 1776	06421231	40	\$40,000	No	No	No
St. Louis County 1777	06421231	40	\$40,000	No	No	No

St. Louis County 1778	06421231	40	\$40,000	No	No	No
St. Louis County 1779	06421231	40	\$40,000	No	No	No
St. Louis County 178	06013229	40	\$40,000	No	No	No
St. Louis County 1780	06421231	40	\$40,000	No	No	No
St. Louis County 1781	06421231	40	\$40,000	No	No	No
St. Louis County 1782	06421203	40	\$40,000	No	No	No
St. Louis County 1783	06421204	57	\$57,100	No	No	No
St. Louis County 1784	06421204	17	\$17,250	No	No	No
St. Louis County 1785	06421204	40	\$40,000	No	No	No
St. Louis County 1786	06421204	40	\$40,000	No	No	No
St. Louis County 1787	06421204	40	\$40,000	No	No	No
St. Louis County 1788	06421204	20	\$20,050	No	No	No
St. Louis County 1789	06421204	40	\$40,000	No	No	No
St. Louis County 179	06013229	40	\$40,000	No	No	No
St. Louis County 1790	06421204	40	\$40,000	No	No	No
St. Louis County 1791	06421204	40	\$40,000	No	No	No
St. Louis County 1792	06421204	40	\$40,000	No	No	No
St. Louis County 1793	06421204	18	\$18,150	No	No	No
St. Louis County 1794	06421205	40	\$40,000	No	No	No
St. Louis County 1795	06421205	40	\$40,000	No	No	No
St. Louis County 1796	06421205	40	\$40,000	No	No	No
St. Louis County 1797	06421205	40	\$40,000	No	No	No
St. Louis County 1798	06421205	40	\$40,000	No	No	No
St. Louis County 1799	06421205	40	\$40,000	No	No	No
St. Louis County 18	06412203	40	\$40,000	No	No	No
St. Louis County 180	06013229	40	\$40,000	No	No	No
St. Louis County 1800	06421206	40	\$40,000	No	No	No
St. Louis County 1801	06421206	40	\$40,000	No	No	No
St. Louis County 1802	06421207	44	\$44,320	No	No	No
St. Louis County 1803	06421207	40	\$40,000	No	No	No
St. Louis County 1804	06421207	40	\$40,000	No	No	No
St. Louis County 1805	06421207	40	\$40,000	No	No	No
St. Louis County 1806	06421207	40	\$40,000	No	No	No
St. Louis County 1807	06421207	40	\$40,000	No	No	No
St. Louis County 1808	06421207	44	\$43,680	No	No	No
St. Louis County 1809	06421207	40	\$40,000	No	No	No
St. Louis County 181	06013230	40	\$40,000	No	No	No
St. Louis County 1810	06421207	40	\$40,000	No	No	No
St. Louis County 1811	06421207	40	\$40,000	No	No	No
St. Louis County 1812	06421208	40	\$40,000	No	No	No
St. Louis County 1813	06421208	40	\$40,000	No	No	No
St. Louis County 1814	06421208	40	\$40,000	No	No	No
St. Louis County 1815	06421208	40	\$40,000	No	No	No
St. Louis County 1816	06421209	17	\$17,140	No	No	No
St. Louis County 1817	06421209	40	\$40,000	No	No	No
St. Louis County 1818	06421209	40	\$40,000	No	No	No
St. Louis County 1819	06421209	40	\$40,000	No	No	No
St. Louis County 182	06013230	40	\$40,000	No	No	No
St. Louis County 1820	06421209	40	\$40,000	No	No	No
St. Louis County 1821	06421209	17	\$17,010	No	No	No
St. Louis County 1822	06421209	40	\$40,000	No	No	No
St. Louis County 1823	06421209	40	\$40,000	No	No	No
St. Louis County 1824	06421209	17	\$16,760	No	No	No
St. Louis County 1825	06421211	40	\$40,000	No	No	No
St. Louis County 1826	06421211	40	\$40,000	No	No	No
St. Louis County 1827	06421211	40	\$40,000	No	No	No
St. Louis County 1828	06421211	40	\$40,000	No	No	No
St. Louis County 1829	06421212	40	\$40,000	No	No	No
St. Louis County 183	06013230	40	\$40,000	No	No	No
St. Louis County 1830	06421216	40	\$40,000	No	No	No
St. Louis County 1831	06421216	40	\$40,000	No	No	No
St. Louis County 1832	06421216	40	\$40,000	No	No	No

St. Louis County 1833	06421216	40	\$40,000	No	No	No
St. Louis County 1834	06421216	17	\$16,890	No	No	No
St. Louis County 1835	06421216	40	\$40,000	No	No	No
St. Louis County 1836	06421216	40	\$40,000	No	No	No
St. Louis County 1837	06421216	40	\$40,000	No	No	No
St. Louis County 1838	06421216	40	\$40,000	No	No	No
St. Louis County 1839	06421216	17	\$16,960	No	No	No
St. Louis County 184	06013230	44	\$44,070	No	No	No
St. Louis County 1840	06421217	40	\$40,000	No	No	No
St. Louis County 1841	06421217	40	\$40,000	No	No	No
St. Louis County 1842	06421217	40	\$40,000	No	No	No
St. Louis County 1843	06421217	40	\$40,000	No	No	No
St. Louis County 1844	06421217	40	\$40,000	No	No	No
St. Louis County 1845	06421217	40	\$40,000	No	No	No
St. Louis County 1846	06421205	30	\$29,970	No	No	No
St. Louis County 1847	06421205	40	\$40,000	No	No	No
St. Louis County 1848	06421204	40	\$40,000	No	No	No
St. Louis County 1849	06421204	40	\$40,000	No	No	No
St. Louis County 185	06013230	40	\$40,000	No	No	No
St. Louis County 1850	06421204	30	\$29,520	No	No	No
St. Louis County 1851	06521228	40	\$40,000	No	No	No
St. Louis County 1852	06521228	40	\$40,000	No	No	No
St. Louis County 1853	06521228	40	\$40,000	No	No	No
St. Louis County 1854	06521228	40	\$40,000	No	No	No
St. Louis County 1855	06521228	40	\$40,000	No	No	No
St. Louis County 1856	06521228	40	\$40,000	No	No	No
St. Louis County 1857	06521228	40	\$40,000	No	No	No
St. Louis County 1858	06521228	40	\$40,000	No	No	No
St. Louis County 1859	06521228	40	\$40,000	No	No	No
St. Louis County 186	06013230	40	\$40,000	No	No	No
St. Louis County 1860	06521231	40	\$40,000	No	No	No
St. Louis County 1861	06521231	40	\$40,100	No	No	No
St. Louis County 1862	06521232	40	\$40,000	No	No	No
St. Louis County 1863	06521232	40	\$40,000	No	No	No
St. Louis County 1864	06521232	40	\$40,000	No	No	No
St. Louis County 1865	06521232	40	\$40,000	No	No	No
St. Louis County 1866	06521232	40	\$40,000	No	No	No
St. Louis County 1867	06521232	40	\$40,000	No	No	No
St. Louis County 1868	06521232	40	\$40,000	No	No	No
St. Louis County 1869	06521233	40	\$40,000	No	No	No
St. Louis County 187	06013230	40	\$40,000	No	No	No
St. Louis County 1870	06521233	40	\$40,000	No	No	No
St. Louis County 1871	06521233	40	\$40,000	No	No	No
St. Louis County 1872	06521233	40	\$40,000	No	No	No
St. Louis County 1873	06521233	40	\$40,000	No	No	No
St. Louis County 1874	06521233	40	\$40,000	No	No	No
St. Louis County 1875	06521233	40	\$40,000	No	No	No
St. Louis County 1876	06521234	40	\$40,000	No	No	No
St. Louis County 1877	06521235	40	\$40,000	No	No	No
St. Louis County 1878	06521202	39	\$38,980	No	No	No
St. Louis County 1879	06521202	39	\$39,110	No	No	No
St. Louis County 188	06013230	40	\$40,000	No	No	No
St. Louis County 1880	06521202	40	\$40,000	No	No	No
St. Louis County 1881	06521204	37	\$37,220	No	No	No
St. Louis County 1882	06521204	40	\$40,000	No	No	No
St. Louis County 1883	06521206	38	\$37,930	No	No	No
St. Louis County 1884	06521206	38	\$38,400	No	No	No
St. Louis County 1885	06521213	40	\$40,000	No	No	No
St. Louis County 1886	06521217	40	\$40,000	No	No	No
St. Louis County 1887	06521217	40	\$40,000	No	No	No
St. Louis County 1888	06521217	40	\$40,000	No	No	No
St. Louis County 1889	06521221	40	\$40,000	No	No	No

St. Louis County 189	06013230	40	\$40,000	No	No	No
St. Louis County 1890	06521221	40	\$40,000	No	No	No
St. Louis County 1891	06521221	40	\$40,000	No	No	No
St. Louis County 1892	06521221	40	\$40,000	No	No	No
St. Louis County 1893	06521226	40	\$40,000	No	No	No
St. Louis County 1894	06521228	40	\$40,000	No	No	No
St. Louis County 1895	06521228	40	\$40,000	No	No	No
St. Louis County 1896	06521228	40	\$40,000	No	No	No
St. Louis County 1897	06521234	67	\$66,990	No	No	No
St. Louis County 1898	06621233	40	\$40,000	No	No	No
St. Louis County 1899	06621233	40	\$40,000	No	No	No
St. Louis County 19	06412203	40	\$40,000	No	No	No
St. Louis County 190	06013230	40	\$40,000	No	No	No
St. Louis County 1900	06621233	40	\$40,000	No	No	No
St. Louis County 1901	06621234	40	\$40,000	No	No	No
St. Louis County 1902	06621230	35	\$35,270	No	No	No
St. Louis County 1903	06621230	35	\$35,140	No	No	No
St. Louis County 1904	06621230	40	\$40,000	No	No	No
St. Louis County 1905	06621230	40	\$40,000	No	No	No
St. Louis County 1906	06621230	40	\$40,000	No	No	No
St. Louis County 1907	06621230	41	\$41,140	No	No	No
St. Louis County 1908	06621230	41	\$40,880	No	No	No
St. Louis County 1909	06621230	40	\$40,000	No	No	No
St. Louis County 191	06013230	49	\$48,830	No	No	No
St. Louis County 1910	06621230	40	\$40,000	No	No	No
St. Louis County 1911	06621230	40	\$40,000	No	No	No
St. Louis County 1912	06621231	40	\$40,000	No	No	No
St. Louis County 1913	06621231	40	\$40,000	No	No	No
St. Louis County 1914	06621231	40	\$40,000	No	No	No
St. Louis County 1915	06621231	40	\$40,000	No	No	No
St. Louis County 1916	06621232	40	\$40,000	No	No	No
St. Louis County 1917	06621232	40	\$40,000	No	No	No
St. Louis County 1918	06621232	40	\$40,000	No	No	No
St. Louis County 1919	06621232	40	\$40,000	No	No	No
St. Louis County 192	06013230	51	\$51,210	No	No	No
St. Louis County 1920	06621232	40	\$40,000	No	No	No
St. Louis County 1921	06621232	40	\$40,000	No	No	No
St. Louis County 1922	06621232	40	\$40,000	No	No	No
St. Louis County 1923	06621232	40	\$40,000	No	No	No
St. Louis County 1924	06621232	40	\$40,000	No	No	No
St. Louis County 1925	06621232	40	\$40,000	No	No	No
St. Louis County 1926	06621232	40	\$40,000	No	No	No
St. Louis County 1927	06621232	40	\$40,000	No	No	No
St. Louis County 1928	06621233	40	\$40,000	No	No	No
St. Louis County 1929	06621203	46	\$45,590	No	No	No
St. Louis County 193	06013230	40	\$40,000	No	No	No
St. Louis County 1930	06621203	46	\$45,910	No	No	No
St. Louis County 1931	06621206	40	\$40,000	No	No	No
St. Louis County 1932	06621223	40	\$40,000	No	No	No
St. Louis County 1933	06621223	40	\$40,000	No	No	No
St. Louis County 1934	06621223	40	\$40,000	No	No	No
St. Louis County 1935	06621223	40	\$40,000	No	No	No
St. Louis County 1936	06621223	40	\$40,000	No	No	No
St. Louis County 1937	06621225	40	\$40,000	No	No	No
St. Louis County 1938	06621226	40	\$40,000	No	No	No
St. Louis County 1939	06621226	40	\$40,000	No	No	No
St. Louis County 194	06013230	40	\$40,000	No	No	No
St. Louis County 1940	06621226	40	\$40,000	No	No	No
St. Louis County 1941	06621226	40	\$40,000	No	No	No
St. Louis County 1942	06621226	40	\$40,000	No	No	No
St. Louis County 1943	06621226	40	\$40,000	No	No	No
St. Louis County 1944	06621226	40	\$40,000	No	No	No

St. Louis County 1945	06621226	40	\$40,000	No	No	No
St. Louis County 1946	06621226	40	\$40,000	No	No	No
St. Louis County 1947	06621227	40	\$40,000	No	No	No
St. Louis County 1948	06621227	40	\$40,000	No	No	No
St. Louis County 1949	06621227	22	\$22,110	No	No	No
St. Louis County 195	06013230	40	\$40,000	No	No	No
St. Louis County 1950	06621227	40	\$40,000	No	No	No
St. Louis County 1951	06621227	40	\$40,000	No	No	No
St. Louis County 1952	06621227	40	\$40,000	No	No	No
St. Louis County 1953	06621228	47	\$46,680	No	No	No
St. Louis County 1954	06621228	35	\$34,540	No	No	No
St. Louis County 1955	06621228	34	\$34,130	No	No	No
St. Louis County 1956	06621228	40	\$40,000	No	No	No
St. Louis County 1957	06621228	40	\$40,000	No	No	No
St. Louis County 1958	06621228	40	\$40,000	No	No	No
St. Louis County 1959	06621228	40	\$40,000	No	No	No
St. Louis County 196	06213204	40	\$39,550	No	No	No
St. Louis County 1960	06621228	40	\$40,000	No	No	No
St. Louis County 1961	06621228	40	\$40,000	No	No	No
St. Louis County 1962	06621229	45	\$44,960	No	No	No
St. Louis County 1963	06621229	35	\$35,040	No	No	No
St. Louis County 1964	06621229	35	\$34,950	No	No	No
St. Louis County 1965	06621229	40	\$40,000	No	No	No
St. Louis County 1966	06621229	40	\$40,000	No	No	No
St. Louis County 1967	06621229	40	\$40,000	No	No	No
St. Louis County 1968	06621229	40	\$40,000	No	No	No
St. Louis County 1969	06721234	40	\$40,000	No	No	No
St. Louis County 197	05414218	54	\$54,200	No	No	No
St. Louis County 198	05814235	10	\$10,000	No	No	No
St. Louis County 199	06114206	40	\$40,000	No	No	No
St. Louis County 2	05512232	40	\$40,000	No	No	No
St. Louis County 20	06412203	40	\$40,000	No	No	No
St. Louis County 200	06114206	40	\$40,000	No	No	No
St. Louis County 201	06114205	40	\$40,000	No	No	No
St. Louis County 202	05415209	40	\$40,000	No	No	No
St. Louis County 203	05415209	40	\$40,000	No	No	No
St. Louis County 204	05415209	40	\$40,000	No	No	No
St. Louis County 205	05415209	40	\$40,000	No	No	No
St. Louis County 206	05415213	40	\$40,000	No	No	No
St. Louis County 207	05415213	40	\$40,000	No	No	No
St. Louis County 208	05415213	40	\$40,000	No	No	No
St. Louis County 209	05415213	40	\$40,000	No	No	No
St. Louis County 21	06412203	40	\$40,000	No	No	No
St. Louis County 210	05415213	40	\$40,000	No	No	No
St. Louis County 211	05415213	40	\$40,000	No	No	No
St. Louis County 212	05415213	40	\$39,830	No	No	No
St. Louis County 213	05415213	26	\$25,750	No	No	No
St. Louis County 214	05415223	25	\$25,050	No	No	No
St. Louis County 215	05415223	7	\$7,000	No	No	No
St. Louis County 216	05415223	30	\$30,170	No	No	No
St. Louis County 217	05415223	40	\$40,000	No	No	No
St. Louis County 218	05415224	40	\$39,720	No	No	No
St. Louis County 219	05415224	40	\$40,000	No	No	No
St. Louis County 22	06412204	45	\$45,390	No	No	No
St. Louis County 220	05415224	38	\$37,680	No	No	No
St. Louis County 221	05415224	40	\$40,000	No	No	No
St. Louis County 222	05615222	40	\$40,000	No	No	No
St. Louis County 223	05715225	40	\$40,000	No	No	No
St. Louis County 224	05715225	40	\$40,000	No	No	No
St. Louis County 225	05715225	40	\$40,000	No	No	No
St. Louis County 226	05715225	40	\$40,000	No	No	No
St. Louis County 227	05715225	40	\$40,000	No	No	No

St. Louis County 228	05715225	40	\$40,000	No	No	No
St. Louis County 229	05715225	40	\$40,000	No	No	No
St. Louis County 23	06412204	20	\$20,000	No	No	No
St. Louis County 230	05715225	40	\$40,000	No	No	No
St. Louis County 231	05815207	14	\$13,800	No	No	No
St. Louis County 232	05815207	34	\$34,090	No	No	No
St. Louis County 233	05815207	39	\$39,030	No	No	No
St. Louis County 234	05815207	40	\$40,440	No	No	No
St. Louis County 235	05815217	40	\$40,000	No	No	No
St. Louis County 236	05815217	40	\$40,000	No	No	No
St. Louis County 237	05815217	40	\$40,000	No	No	No
St. Louis County 238	05815217	37	\$36,930	No	No	No
St. Louis County 239	05815217	38	\$37,930	No	No	No
St. Louis County 24	06412204	40	\$40,000	No	No	No
St. Louis County 240	05815217	40	\$40,000	No	No	No
St. Louis County 241	05815217	40	\$40,000	No	No	No
St. Louis County 242	05815218	37	\$36,950	No	No	No
St. Louis County 243	05815218	37	\$36,950	No	No	No
St. Louis County 244	05815218	37	\$36,930	No	No	No
St. Louis County 245	05815218	37	\$36,930	No	No	No
St. Louis County 246	05815219	40	\$40,000	No	No	No
St. Louis County 247	05815219	40	\$40,000	No	No	No
St. Louis County 248	05815219	40	\$40,000	No	No	No
St. Louis County 249	05815219	40	\$40,000	No	No	No
St. Louis County 25	06412204	40	\$40,000	No	No	No
St. Louis County 250	05815219	40	\$40,000	No	No	No
St. Louis County 251	05815219	40	\$40,000	No	No	No
St. Louis County 252	05815219	45	\$44,670	No	No	No
St. Louis County 253	05815219	40	\$40,000	No	No	No
St. Louis County 254	05815219	44	\$44,290	No	No	No
St. Louis County 255	05815220	40	\$40,000	No	No	No
St. Louis County 256	05815220	40	\$40,000	No	No	No
St. Louis County 257	05815220	40	\$40,000	No	No	No
St. Louis County 258	05815220	40	\$40,000	No	No	No
St. Louis County 259	05815220	27	\$27,340	No	No	No
St. Louis County 26	06412204	40	\$40,000	No	No	No
St. Louis County 260	05815220	40	\$40,000	No	No	No
St. Louis County 261	05815220	1	\$1,250	No	No	No
St. Louis County 262	06015207	30	\$30,000	No	No	No
St. Louis County 263	06015208	40	\$40,000	No	No	No
St. Louis County 264	06015205	40	\$40,000	No	No	No
St. Louis County 265	06115231	37	\$37,370	No	No	No
St. Louis County 266	06115231	40	\$40,000	No	No	No
St. Louis County 267	06115231	40	\$40,000	No	No	No
St. Louis County 268	05516206	32	\$32,270	No	No	No
St. Louis County 269	05516206	40	\$40,000	No	No	No
St. Louis County 27	06412204	40	\$40,000	No	No	No
St. Louis County 270	05516206	40	\$40,000	No	No	No
St. Louis County 271	05516206	40	\$40,000	No	No	No
St. Louis County 272	05516208	40	\$40,000	No	No	No
St. Louis County 273	05516232	40	\$39,520	No	No	No
St. Louis County 274	05516233	40	\$40,000	No	No	No
St. Louis County 275	05516233	40	\$40,000	No	No	No
St. Louis County 276	05016207	42	\$41,630	No	No	No
St. Louis County 277	05016207	40	\$40,000	No	No	No
St. Louis County 278	05016207	40	\$40,000	No	No	No
St. Louis County 279	05016207	40	\$40,000	No	No	No
St. Louis County 28	05312220	40	\$40,000	No	No	No
St. Louis County 280	05016207	40	\$40,000	No	No	No
St. Louis County 281	05016207	40	\$40,000	No	No	No
St. Louis County 282	05016207	40	\$40,000	No	No	No
St. Louis County 283	05016207	42	\$41,920	No	No	No

St. Louis County 284	05016207	42	\$42,210	No	No	No
St. Louis County 285	05016207	40	\$40,000	No	No	No
St. Louis County 286	05016207	40	\$40,000	No	No	No
St. Louis County 287	05016207	40	\$40,000	No	No	No
St. Louis County 288	05016218	40	\$40,000	No	No	No
St. Louis County 289	05016218	40	\$40,000	No	No	No
St. Louis County 29	05312220	40	\$40,000	No	No	No
St. Louis County 290	05016218	42	\$42,310	No	No	No
St. Louis County 291	05016218	40	\$40,000	No	No	No
St. Louis County 292	05016218	40	\$40,000	No	No	No
St. Louis County 293	05016218	40	\$40,000	No	No	No
St. Louis County 294	05016218	42	\$42,130	No	No	No
St. Louis County 295	05016230	40	\$40,000	No	No	No
St. Louis County 296	05016230	35	\$35,000	No	No	No
St. Louis County 297	05116206	47	\$46,560	No	No	No
St. Louis County 298	05116206	45	\$44,680	No	No	No
St. Louis County 299	05116206	32	\$31,500	No	No	No
St. Louis County 3	05512232	40	\$40,000	No	No	No
St. Louis County 30	05312221	40	\$40,000	No	No	No
St. Louis County 300	05116206	40	\$40,000	No	No	No
St. Louis County 301	05116206	32	\$31,900	No	No	No
St. Louis County 302	05216205	40	\$40,000	No	No	No
St. Louis County 303	05216205	40	\$40,000	No	No	No
St. Louis County 304	05216206	40	\$40,000	No	No	No
St. Louis County 305	05216206	40	\$40,000	No	No	No
St. Louis County 306	05216208	40	\$40,000	No	No	No
St. Louis County 307	05216208	40	\$40,000	No	No	No
St. Louis County 308	05216208	40	\$40,000	No	No	No
St. Louis County 309	05216208	40	\$40,000	No	No	No
St. Louis County 31	05312221	40	\$40,000	No	No	No
St. Louis County 310	05216208	40	\$40,000	No	No	No
St. Louis County 311	05216209	40	\$40,000	No	No	No
St. Louis County 312	05216209	40	\$40,000	No	No	No
St. Louis County 313	05216209	40	\$40,000	No	No	No
St. Louis County 314	05216215	40	\$40,000	No	No	No
St. Louis County 315	05716217	40	\$40,000	No	No	No
St. Louis County 316	05816212	41	\$40,620	No	No	No
St. Louis County 317	05816212	40	\$40,000	No	No	No
St. Louis County 318	05816212	43	\$43,080	No	No	No
St. Louis County 319	05816212	39	\$38,620	No	No	No
St. Louis County 32	05312221	40	\$40,000	No	No	No
St. Louis County 320	05816212	39	\$38,620	No	No	No
St. Louis County 321	05816212	13	\$12,780	No	No	No
St. Louis County 322	05816212	21	\$20,780	No	No	No
St. Louis County 323	05816212	28	\$27,850	No	No	No
St. Louis County 324	05916208	40	\$40,000	No	No	No
St. Louis County 325	05916208	40	\$40,000	No	No	No
St. Louis County 326	05916217	40	\$40,000	No	No	No
St. Louis County 327	06016210	40	\$40,000	No	No	No
St. Louis County 328	06016210	40	\$40,000	No	No	No
St. Louis County 329	06016210	40	\$40,000	No	No	No
St. Louis County 33	05312221	40	\$40,000	No	No	No
St. Louis County 330	06016210	40	\$40,000	No	No	No
St. Louis County 331	06016211	40	\$40,000	No	No	No
St. Louis County 332	06016211	40	\$40,000	No	No	No
St. Louis County 333	06016211	40	\$40,000	No	No	No
St. Louis County 334	06016211	40	\$40,000	No	No	No
St. Louis County 335	06016211	40	\$40,000	No	No	No
St. Louis County 336	06016211	40	\$40,000	No	No	No
St. Louis County 337	06016211	40	\$40,000	No	No	No
St. Louis County 338	06016211	40	\$40,000	No	No	No
St. Louis County 339	06016212	40	\$40,000	No	No	No

St. Louis County 34	05312221	40	\$40,000	No	No	No
St. Louis County 340	06016212	40	\$40,000	No	No	No
St. Louis County 341	06016221	40	\$40,000	No	No	No
St. Louis County 342	06016221	40	\$40,000	No	No	No
St. Louis County 343	06016221	40	\$40,000	No	No	No
St. Louis County 344	06016221	40	\$40,000	No	No	No
St. Louis County 345	06216228	40	\$40,000	No	No	No
St. Louis County 346	06216233	40	\$40,000	No	No	No
St. Louis County 347	05217221	40	\$40,000	No	No	No
St. Louis County 348	05217221	40	\$40,000	No	No	No
St. Louis County 349	05217221	40	\$40,000	No	No	No
St. Louis County 35	05312222	40	\$40,000	No	No	No
St. Louis County 350	05217221	40	\$40,000	No	No	No
St. Louis County 351	05217221	40	\$40,000	No	No	No
St. Louis County 352	05217221	40	\$40,000	No	No	No
St. Louis County 353	05217221	40	\$40,000	No	No	No
St. Louis County 354	05217221	40	\$40,000	No	No	No
St. Louis County 355	05217221	40	\$40,000	No	No	No
St. Louis County 356	05217221	40	\$40,000	No	No	No
St. Louis County 357	05217221	40	\$40,000	No	No	No
St. Louis County 358	05217221	40	\$40,000	No	No	No
St. Louis County 359	05217221	40	\$40,000	No	No	No
St. Louis County 36	05312228	40	\$40,000	No	No	No
St. Louis County 360	05217221	40	\$40,000	No	No	No
St. Louis County 361	05217221	40	\$40,000	No	No	No
St. Louis County 362	05217221	40	\$40,000	No	No	No
St. Louis County 363	05217221	40	\$40,000	No	No	No
St. Louis County 364	05217221	40	\$40,000	No	No	No
St. Louis County 365	05217222	40	\$40,000	No	No	No
St. Louis County 366	05217222	40	\$40,000	No	No	No
St. Louis County 367	05217222	40	\$40,000	No	No	No
St. Louis County 368	05217222	40	\$40,000	No	No	No
St. Louis County 369	05217222	40	\$40,000	No	No	No
St. Louis County 37	05312228	40	\$40,000	No	No	No
St. Louis County 370	05217222	40	\$40,000	No	No	No
St. Louis County 371	05217222	40	\$40,000	No	No	No
St. Louis County 372	05217222	40	\$40,000	No	No	No
St. Louis County 373	05617224	40	\$40,000	No	No	No
St. Louis County 374	05617224	40	\$40,000	No	No	No
St. Louis County 375	05617224	40	\$40,000	No	No	No
St. Louis County 376	05617224	40	\$40,000	No	No	No
St. Louis County 377	05617223	40	\$40,000	No	No	No
St. Louis County 378	05617224	40	\$40,000	No	No	No
St. Louis County 379	05617224	40	\$40,000	No	No	No
St. Louis County 38	05312229	40	\$40,000	No	No	No
St. Louis County 380	05017214	40	\$40,000	No	No	No
St. Louis County 381	05017214	40	\$40,000	No	No	No
St. Louis County 382	05017214	37	\$36,840	No	No	No
St. Louis County 383	05017214	37	\$37,000	No	No	No
St. Louis County 384	05017214	40	\$40,000	No	No	No
St. Louis County 385	05017214	40	\$40,000	No	No	No
St. Louis County 386	05017214	40	\$40,000	No	No	No
St. Louis County 387	05017214	40	\$40,000	No	No	No
St. Louis County 388	05017214	21	\$21,000	No	No	No
St. Louis County 389	05017217	40	\$39,880	No	No	No
St. Louis County 39	05312229	40	\$40,000	No	No	No
St. Louis County 390	05017217	40	\$40,000	No	No	No
St. Louis County 391	05017217	40	\$40,000	No	No	No
St. Louis County 392	05017217	40	\$40,000	No	No	No
St. Louis County 393	05017201	28	\$28,000	No	No	No
St. Louis County 394	05017201	40	\$40,000	No	No	No
St. Louis County 395	05017201	40	\$40,000	No	No	No

St. Louis County 396	05017203	4	\$3,550	No	No	No
St. Louis County 397	05017203	40	\$40,000	No	No	No
St. Louis County 398	05017203	40	\$40,000	No	No	No
St. Louis County 399	05017203	40	\$40,000	No	No	No
St. Louis County 4	05512232	40	\$40,000	No	No	No
St. Louis County 40	05312221	14	\$14,180	No	No	No
St. Louis County 400	05017203	40	\$40,000	No	No	No
St. Louis County 401	05017203	40	\$40,000	No	No	No
St. Louis County 402	05017203	40	\$40,000	No	No	No
St. Louis County 403	05017203	40	\$40,000	No	No	No
St. Louis County 404	05017204	30	\$30,000	No	No	No
St. Louis County 405	05017204	40	\$40,000	No	No	No
St. Louis County 406	05017204	40	\$40,000	No	No	No
St. Louis County 407	05017204	40	\$40,000	No	No	No
St. Louis County 408	05017204	40	\$40,000	No	No	No
St. Louis County 409	05017204	40	\$40,000	No	No	No
St. Louis County 41	05512202	38	\$38,250	No	No	No
St. Louis County 410	05017204	40	\$40,000	No	No	No
St. Louis County 411	05017204	40	\$40,000	No	No	No
St. Louis County 412	05017205	40	\$40,000	No	No	No
St. Louis County 413	05017206	5	\$4,500	No	No	No
St. Louis County 414	05017206	20	\$20,000	No	No	No
St. Louis County 415	05017206	20	\$20,000	No	No	No
St. Louis County 416	05017206	40	\$40,000	No	No	No
St. Louis County 417	05017207	40	\$40,000	No	No	No
St. Louis County 418	05017207	40	\$40,000	No	No	No
St. Louis County 419	05017207	40	\$40,000	No	No	No
St. Louis County 42	05512202	40	\$40,000	No	No	No
St. Louis County 420	05017207	40	\$40,000	No	No	No
St. Louis County 421	05017207	40	\$40,000	No	No	No
St. Louis County 422	05017207	40	\$40,000	No	No	No
St. Louis County 423	05017207	40	\$40,000	No	No	No
St. Louis County 424	05017207	40	\$40,000	No	No	No
St. Louis County 425	05017207	40	\$40,000	No	No	No
St. Louis County 426	05017208	40	\$40,000	No	No	No
St. Louis County 427	05017208	40	\$40,000	No	No	No
St. Louis County 428	05017208	40	\$40,000	No	No	No
St. Louis County 429	05017208	40	\$40,000	No	No	No
St. Louis County 43	05512208	40	\$40,000	No	No	No
St. Louis County 430	05017208	40	\$40,000	No	No	No
St. Louis County 431	05017208	40	\$40,000	No	No	No
St. Louis County 432	05017208	40	\$40,000	No	No	No
St. Louis County 433	05017208	40	\$40,000	No	No	No
St. Louis County 434	05017208	40	\$40,000	No	No	No
St. Louis County 435	05017208	40	\$40,000	No	No	No
St. Louis County 436	05017208	40	\$40,000	No	No	No
St. Louis County 437	05017208	40	\$40,000	No	No	No
St. Louis County 438	05017208	40	\$40,000	No	No	No
St. Louis County 439	05017208	40	\$40,000	No	No	No
St. Louis County 44	05612218	46	\$45,920	No	No	No
St. Louis County 440	05017208	40	\$40,000	No	No	No
St. Louis County 441	05017208	40	\$40,000	No	No	No
St. Louis County 442	05017209	40	\$40,000	No	No	No
St. Louis County 443	05017209	40	\$40,000	No	No	No
St. Louis County 444	05017209	40	\$40,000	No	No	No
St. Louis County 445	05017209	40	\$40,000	No	No	No
St. Louis County 446	05017209	40	\$40,000	No	No	No
St. Louis County 447	05017209	40	\$40,000	No	No	No
St. Louis County 448	05017209	40	\$40,000	No	No	No
St. Louis County 449	05017209	40	\$40,000	No	No	No
St. Louis County 45	05712234	11	\$11,170	No	No	No
St. Louis County 450	05017209	40	\$40,000	No	No	No

St. Louis County 451	05017209	40	\$40,000	No	No	No
St. Louis County 452	05017209	40	\$40,000	No	No	No
St. Louis County 453	05017209	40	\$40,000	No	No	No
St. Louis County 454	05017209	40	\$40,000	No	No	No
St. Louis County 455	05017209	40	\$40,000	No	No	No
St. Louis County 456	05017209	40	\$40,000	No	No	No
St. Louis County 457	05017209	40	\$40,000	No	No	No
St. Louis County 458	05017209	37	\$37,200	No	No	No
St. Louis County 459	05017209	37	\$37,200	No	No	No
St. Louis County 46	05712233	10	\$10,160	No	No	No
St. Louis County 460	05017209	37	\$37,190	No	No	No
St. Louis County 461	05017209	37	\$37,190	No	No	No
St. Louis County 462	05017209	39	\$39,030	No	No	No
St. Louis County 463	05017209	39	\$39,030	No	No	No
St. Louis County 464	05017209	38	\$38,340	No	No	No
St. Louis County 465	05017209	38	\$38,340	No	No	No
St. Louis County 466	05017210	40	\$40,000	No	No	No
St. Louis County 467	05017210	40	\$40,000	No	No	No
St. Louis County 468	05017210	40	\$40,000	No	No	No
St. Louis County 469	05017210	40	\$40,000	No	No	No
St. Louis County 47	06112203	40	\$40,000	No	No	No
St. Louis County 470	05017210	40	\$40,000	No	No	No
St. Louis County 471	05017210	40	\$40,000	No	No	No
St. Louis County 472	05017210	40	\$40,000	No	No	No
St. Louis County 473	05017210	40	\$40,000	No	No	No
St. Louis County 474	05017210	40	\$40,000	No	No	No
St. Louis County 475	05017210	40	\$40,000	No	No	No
St. Louis County 476	05017210	40	\$40,000	No	No	No
St. Louis County 477	05017210	40	\$40,000	No	No	No
St. Louis County 478	05017210	40	\$40,000	No	No	No
St. Louis County 479	05017210	40	\$40,000	No	No	No
St. Louis County 48	06112203	40	\$40,000	No	No	No
St. Louis County 480	05017210	40	\$40,000	No	No	No
St. Louis County 481	05017210	40	\$40,000	No	No	No
St. Louis County 482	05017210	40	\$40,000	No	No	No
St. Louis County 483	05017210	40	\$40,000	No	No	No
St. Louis County 484	05017211	14	\$14,230	No	No	No
St. Louis County 485	05017211	40	\$40,000	No	No	No
St. Louis County 486	05017211	40	\$40,000	No	No	No
St. Louis County 487	05017211	40	\$40,000	No	No	No
St. Louis County 488	05017211	40	\$40,000	No	No	No
St. Louis County 489	05017211	27	\$27,020	No	No	No
St. Louis County 49	06112203	40	\$40,000	No	No	No
St. Louis County 490	05017211	40	\$40,000	No	No	No
St. Louis County 491	05017211	40	\$40,000	No	No	No
St. Louis County 492	05017212	40	\$40,000	No	No	No
St. Louis County 493	05017212	40	\$40,000	No	No	No
St. Louis County 494	05017212	40	\$40,000	No	No	No
St. Louis County 495	05017212	40	\$40,000	No	No	No
St. Louis County 496	05017212	40	\$40,000	No	No	No
St. Louis County 497	05017212	40	\$40,000	No	No	No
St. Louis County 498	05017212	40	\$40,000	No	No	No
St. Louis County 499	05017212	40	\$40,000	No	No	No
St. Louis County 5	05512232	40	\$40,000	No	No	No
St. Louis County 50	06212203	26	\$26,040	No	No	No
St. Louis County 500	05017226	10	\$9,600	No	No	No
St. Louis County 501	05017234	18	\$17,750	No	No	No
St. Louis County 502	05017234	28	\$27,750	No	No	No
St. Louis County 503	05017234	28	\$27,750	No	No	No
St. Louis County 504	05017234	21	\$21,050	No	No	No
St. Louis County 505	05017234	31	\$30,530	No	No	No
St. Louis County 506	05017235	16	\$16,200	No	No	No

St. Louis County 507	05117201	21	\$20,650	No	No	No
St. Louis County 508	05117201	44	\$43,500	No	No	No
St. Louis County 509	05117201	20	\$20,000	No	No	No
St. Louis County 51	06312201	40	\$40,000	No	No	No
St. Louis County 510	05117201	40	\$39,880	No	No	No
St. Louis County 511	05117201	40	\$40,000	No	No	No
St. Louis County 512	05117201	40	\$40,000	No	No	No
St. Louis County 513	05117202	44	\$44,210	No	No	No
St. Louis County 514	05117202	45	\$44,640	No	No	No
St. Louis County 515	05117202	45	\$45,070	No	No	No
St. Louis County 516	05117202	42	\$42,180	No	No	No
St. Louis County 517	05117202	37	\$37,000	No	No	No
St. Louis County 518	05117202	40	\$40,000	No	No	No
St. Louis County 519	05117202	40	\$40,000	No	No	No
St. Louis County 52	06312201	40	\$40,000	No	No	No
St. Louis County 520	05117202	35	\$35,030	No	No	No
St. Louis County 521	05117202	35	\$35,030	No	No	No
St. Louis County 522	05117203	39	\$38,810	No	No	No
St. Louis County 523	05117203	46	\$45,810	No	No	No
St. Louis County 524	05117203	44	\$43,500	No	No	No
St. Louis County 525	05117203	40	\$40,000	No	No	No
St. Louis County 526	05117203	34	\$33,840	No	No	No
St. Louis County 527	05117203	34	\$33,840	No	No	No
St. Louis County 528	05117203	34	\$34,290	No	No	No
St. Louis County 529	05117203	34	\$34,290	No	No	No
St. Louis County 53	06312201	40	\$40,000	No	No	No
St. Louis County 530	05117203	40	\$40,000	No	No	No
St. Louis County 531	05117203	40	\$40,000	No	No	No
St. Louis County 532	05117203	31	\$30,800	No	No	No
St. Louis County 533	05117203	40	\$40,000	No	No	No
St. Louis County 534	05117203	34	\$34,370	No	No	No
St. Louis County 535	05117210	35	\$34,560	No	No	No
St. Louis County 536	05117210	35	\$34,560	No	No	No
St. Louis County 537	05117210	40	\$40,000	No	No	No
St. Louis County 538	05117210	40	\$40,000	No	No	No
St. Louis County 539	05117210	40	\$40,000	No	No	No
St. Louis County 54	06312201	40	\$40,000	No	No	No
St. Louis County 540	05117210	40	\$40,000	No	No	No
St. Louis County 541	05117210	40	\$40,000	No	No	No
St. Louis County 542	05117210	40	\$40,000	No	No	No
St. Louis County 543	05117210	40	\$40,000	No	No	No
St. Louis County 544	05117210	40	\$40,000	No	No	No
St. Louis County 545	05117211	40	\$40,000	No	No	No
St. Louis County 546	05117211	38	\$38,000	No	No	No
St. Louis County 547	05117211	40	\$40,000	No	No	No
St. Louis County 548	05117211	40	\$40,000	No	No	No
St. Louis County 549	05117211	40	\$40,000	No	No	No
St. Louis County 55	06312205	39	\$38,850	No	No	No
St. Louis County 550	05117214	40	\$40,000	No	No	No
St. Louis County 551	05217204	38	\$37,850	No	No	No
St. Louis County 552	05217204	38	\$37,850	No	No	No
St. Louis County 553	05217204	40	\$40,000	No	No	No
St. Louis County 554	05217204	40	\$40,000	No	No	No
St. Louis County 555	05217204	40	\$40,000	No	No	No
St. Louis County 556	05217204	40	\$40,000	No	No	No
St. Louis County 557	05217204	40	\$40,000	No	No	No
St. Louis County 558	05217204	30	\$30,000	No	No	No
St. Louis County 559	05217204	35	\$35,000	No	No	No
St. Louis County 56	06312205	39	\$38,550	No	No	No
St. Louis County 560	05217204	40	\$40,000	No	No	No
St. Louis County 561	05217205	41	\$40,890	No	No	No
St. Louis County 562	05217205	43	\$42,810	No	No	No

St. Louis County 563	05217205	40	\$40,000	No	No	No
St. Louis County 564	05217205	40	\$40,000	No	No	No
St. Louis County 565	05217205	40	\$40,000	No	No	No
St. Louis County 566	05217205	40	\$40,000	No	No	No
St. Louis County 567	05217205	40	\$40,000	No	No	No
St. Louis County 568	05217205	40	\$40,000	No	No	No
St. Louis County 569	05217205	40	\$40,000	No	No	No
St. Louis County 57	06312205	40	\$40,000	No	No	No
St. Louis County 570	05217205	40	\$40,000	No	No	No
St. Louis County 571	05217205	40	\$40,000	No	No	No
St. Louis County 572	05217215	40	\$40,000	No	No	No
St. Louis County 573	05217215	40	\$40,000	No	No	No
St. Louis County 574	05217215	40	\$40,000	No	No	No
St. Louis County 575	05217215	40	\$40,000	No	No	No
St. Louis County 576	05217215	40	\$40,000	No	No	No
St. Louis County 577	05217215	40	\$40,000	No	No	No
St. Louis County 578	05217215	40	\$40,000	No	No	No
St. Louis County 579	05217215	40	\$40,000	No	No	No
St. Louis County 58	06312205	40	\$40,000	No	No	No
St. Louis County 580	05217222	40	\$40,000	No	No	No
St. Louis County 581	05217222	40	\$40,000	No	No	No
St. Louis County 582	05217222	40	\$40,000	No	No	No
St. Louis County 583	05217222	40	\$40,000	No	No	No
St. Louis County 584	05217222	40	\$40,000	No	No	No
St. Louis County 585	05217222	40	\$40,000	No	No	No
St. Louis County 586	05217222	40	\$40,000	No	No	No
St. Louis County 587	05217228	40	\$40,000	No	No	No
St. Louis County 588	05217228	40	\$40,000	No	No	No
St. Louis County 589	05217228	40	\$40,000	No	No	No
St. Louis County 59	06312205	40	\$40,000	No	No	No
St. Louis County 590	05217235	40	\$40,000	No	No	No
St. Louis County 591	05217235	30	\$30,170	No	No	No
St. Louis County 592	05217235	40	\$40,000	No	No	No
St. Louis County 593	05217235	40	\$40,000	No	No	No
St. Louis County 594	05217235	40	\$40,000	No	No	No
St. Louis County 595	05217235	40	\$40,000	No	No	No
St. Louis County 596	05217235	40	\$40,000	No	No	No
St. Louis County 597	05217235	40	\$40,000	No	No	No
St. Louis County 598	05217235	34	\$33,960	No	No	No
St. Louis County 599	05217235	37	\$37,000	No	No	No
St. Louis County 6	06412202	40	\$40,000	No	No	No
St. Louis County 60	06412202	44	\$43,520	No	No	No
St. Louis County 600	05217235	40	\$40,000	No	No	No
St. Louis County 601	05217235	40	\$40,000	No	No	No
St. Louis County 602	05217235	40	\$40,000	No	No	No
St. Louis County 603	05317207	46	\$46,380	No	No	No
St. Louis County 604	05317211	40	\$40,000	No	No	No
St. Louis County 605	05317211	40	\$40,000	No	No	No
St. Louis County 606	05317211	40	\$40,000	No	No	No
St. Louis County 607	05317211	40	\$40,000	No	No	No
St. Louis County 608	05317211	40	\$40,000	No	No	No
St. Louis County 609	05317217	40	\$40,000	No	No	No
St. Louis County 61	06412202	40	\$40,000	No	No	No
St. Louis County 610	05317217	40	\$40,000	No	No	No
St. Louis County 611	05317217	40	\$40,000	No	No	No
St. Louis County 612	05317218	40	\$40,000	No	No	No
St. Louis County 613	05417226	40	\$40,000	No	No	No
St. Louis County 614	05417235	40	\$40,000	No	No	No
St. Louis County 615	05417235	40	\$40,000	No	No	No
St. Louis County 616	05417235	40	\$40,000	No	No	No
St. Louis County 617	05417235	40	\$40,000	No	No	No
St. Louis County 618	05617214	40	\$40,000	No	No	No

St. Louis County 675	06417228	40	\$40,000	No	No	No
St. Louis County 676	06417228	40	\$40,000	No	No	No
St. Louis County 677	06417228	40	\$40,000	No	No	No
St. Louis County 678	06417228	40	\$40,000	No	No	No
St. Louis County 679	06417228	40	\$40,000	No	No	No
St. Louis County 68	06412208	40	\$40,000	No	No	No
St. Louis County 680	06417228	40	\$40,000	No	No	No
St. Louis County 681	06417229	40	\$40,000	No	No	No
St. Louis County 682	06417229	40	\$40,000	No	No	No
St. Louis County 683	06417229	40	\$40,000	No	No	No
St. Louis County 684	06417203	43	\$43,390	No	No	No
St. Louis County 685	06417203	40	\$40,000	No	No	No
St. Louis County 686	06417203	40	\$40,000	No	No	No
St. Louis County 687	06417203	40	\$40,000	No	No	No
St. Louis County 688	06417203	15	\$15,000	No	No	No
St. Louis County 689	06417204	44	\$44,170	No	No	No
St. Louis County 69	06412209	40	\$40,000	No	No	No
St. Louis County 690	06417204	40	\$40,000	No	No	No
St. Louis County 691	06417204	40	\$40,000	No	No	No
St. Louis County 692	06417204	40	\$40,000	No	No	No
St. Louis County 693	06417204	40	\$40,000	No	No	No
St. Louis County 694	06417205	45	\$45,300	No	No	No
St. Louis County 695	06417205	40	\$40,000	No	No	No
St. Louis County 696	06417205	40	\$40,000	No	No	No
St. Louis County 697	06417205	40	\$40,000	No	No	No
St. Louis County 698	06417205	40	\$40,000	No	No	No
St. Louis County 699	06417205	40	\$40,000	No	No	No
St. Louis County 7	06412202	40	\$40,000	No	No	No
St. Louis County 70	06412209	40	\$40,000	No	No	No
St. Louis County 700	06417205	40	\$40,000	No	No	No
St. Louis County 701	06417205	5	\$5,000	No	No	No
St. Louis County 702	06417206	46	\$45,800	No	No	No
St. Louis County 703	06417206	46	\$46,200	No	No	No
St. Louis County 704	06417206	47	\$46,600	No	No	No
St. Louis County 705	06417206	46	\$45,690	No	No	No
St. Louis County 706	06417206	40	\$39,530	No	No	No
St. Louis County 707	06417206	40	\$40,000	No	No	No
St. Louis County 708	06417206	40	\$40,000	No	No	No
St. Louis County 709	06417206	40	\$40,000	No	No	No
St. Louis County 71	06412209	40	\$40,000	No	No	No
St. Louis County 710	06417206	40	\$40,000	No	No	No
St. Louis County 711	06417206	40	\$40,000	No	No	No
St. Louis County 712	06417206	40	\$40,000	No	No	No
St. Louis County 713	06417206	39	\$39,320	No	No	No
St. Louis County 714	06417206	39	\$39,110	No	No	No
St. Louis County 715	06417206	40	\$40,000	No	No	No
St. Louis County 716	06417206	40	\$40,000	No	No	No
St. Louis County 717	06417206	40	\$40,000	No	No	No
St. Louis County 718	06417207	14	\$13,750	No	No	No
St. Louis County 719	06417208	40	\$40,000	No	No	No
St. Louis County 72	06412209	40	\$40,000	No	No	No
St. Louis County 720	06417208	40	\$40,000	No	No	No
St. Louis County 721	06417209	40	\$40,000	No	No	No
St. Louis County 722	06417209	40	\$40,000	No	No	No
St. Louis County 723	06417209	40	\$40,000	No	No	No
St. Louis County 724	06417209	40	\$40,000	No	No	No
St. Louis County 725	06417209	40	\$40,000	No	No	No
St. Louis County 726	06417210	40	\$40,000	No	No	No
St. Louis County 727	06417210	40	\$40,000	No	No	No
St. Louis County 728	06417210	40	\$40,000	No	No	No
St. Louis County 729	06417210	40	\$40,000	No	No	No
St. Louis County 73	06412209	40	\$40,000	No	No	No

St. Louis County 730	06417210	40	\$40,000	No	No	No
St. Louis County 731	06417210	40	\$40,000	No	No	No
St. Louis County 732	06417215	40	\$40,000	No	No	No
St. Louis County 733	06417215	40	\$40,000	No	No	No
St. Louis County 734	06417215	40	\$40,000	No	No	No
St. Louis County 735	06417215	40	\$40,000	No	No	No
St. Louis County 736	06417229	40	\$40,000	No	No	No
St. Louis County 737	06417229	40	\$40,000	No	No	No
St. Louis County 738	06417229	40	\$40,000	No	No	No
St. Louis County 739	06417229	40	\$40,000	No	No	No
St. Louis County 74	06412209	40	\$40,000	No	No	No
St. Louis County 740	06417229	40	\$40,000	No	No	No
St. Louis County 741	06417229	40	\$40,000	No	No	No
St. Louis County 742	06417229	40	\$40,000	No	No	No
St. Louis County 743	06417229	40	\$40,000	No	No	No
St. Louis County 744	06417230	37	\$36,640	No	No	No
St. Louis County 745	06417230	37	\$36,600	No	No	No
St. Louis County 746	06417230	40	\$40,000	No	No	No
St. Louis County 747	06417230	9	\$9,090	No	No	No
St. Louis County 748	06417230	40	\$40,000	No	No	No
St. Louis County 749	06417230	40	\$40,000	No	No	No
St. Louis County 75	06412209	40	\$40,000	No	No	No
St. Louis County 750	06417230	37	\$36,560	No	No	No
St. Louis County 751	06417230	40	\$40,000	No	No	No
St. Louis County 752	06417231	40	\$40,000	No	No	No
St. Louis County 753	06417231	37	\$36,610	No	No	No
St. Louis County 754	06417231	37	\$36,830	No	No	No
St. Louis County 755	06417231	40	\$40,000	No	No	No
St. Louis County 756	06417231	40	\$40,000	No	No	No
St. Louis County 757	06417231	37	\$37,060	No	No	No
St. Louis County 758	06417231	37	\$37,290	No	No	No
St. Louis County 759	06417232	40	\$40,000	No	No	No
St. Louis County 76	06412209	40	\$40,000	No	No	No
St. Louis County 760	06417232	40	\$40,000	No	No	No
St. Louis County 761	06417233	40	\$40,000	No	No	No
St. Louis County 762	06417233	40	\$40,000	No	No	No
St. Louis County 763	06417233	40	\$40,000	No	No	No
St. Louis County 764	06417233	40	\$40,000	No	No	No
St. Louis County 765	06417233	40	\$40,000	No	No	No
St. Louis County 766	06417234	40	\$40,000	No	No	No
St. Louis County 767	06417234	40	\$40,000	No	No	No
St. Louis County 768	06417234	40	\$40,000	No	No	No
St. Louis County 769	06417234	40	\$40,000	No	No	No
St. Louis County 77	06412209	40	\$40,000	No	No	No
St. Louis County 770	06417234	40	\$40,000	No	No	No
St. Louis County 771	06417234	40	\$40,000	No	No	No
St. Louis County 772	06417234	40	\$40,000	No	No	No
St. Louis County 773	06417234	40	\$40,000	No	No	No
St. Louis County 774	06417215	40	\$40,000	No	No	No
St. Louis County 775	06417215	40	\$40,000	No	No	No
St. Louis County 776	06417215	40	\$40,000	No	No	No
St. Louis County 777	06417216	40	\$40,000	No	No	No
St. Louis County 778	06417216	40	\$40,000	No	No	No
St. Louis County 779	06417216	40	\$40,000	No	No	No
St. Louis County 78	06412209	40	\$40,000	No	No	No
St. Louis County 780	06417216	40	\$40,000	No	No	No
St. Louis County 781	06417216	40	\$40,000	No	No	No
St. Louis County 782	06417216	40	\$40,000	No	No	No
St. Louis County 783	06417216	40	\$40,000	No	No	No
St. Louis County 784	06417216	40	\$40,000	No	No	No
St. Louis County 785	06417216	40	\$40,000	No	No	No
St. Louis County 786	06417216	40	\$40,000	No	No	No

St. Louis County 787	06417216	40	\$40,000	No	No	No
St. Louis County 788	06417217	40	\$40,000	No	No	No
St. Louis County 789	06417217	40	\$40,000	No	No	No
St. Louis County 79	06412209	40	\$40,000	No	No	No
St. Louis County 790	06417217	40	\$40,000	No	No	No
St. Louis County 791	06417217	40	\$40,000	No	No	No
St. Louis County 792	06417217	40	\$40,000	No	No	No
St. Louis County 793	06417217	40	\$40,000	No	No	No
St. Louis County 794	06417217	40	\$40,000	No	No	No
St. Louis County 795	06417217	40	\$40,000	No	No	No
St. Louis County 796	06417217	40	\$40,000	No	No	No
St. Louis County 797	06417217	40	\$40,000	No	No	No
St. Louis County 798	06417217	40	\$40,000	No	No	No
St. Louis County 799	06417217	40	\$40,000	No	No	No
St. Louis County 8	06412202	40	\$40,000	No	No	No
St. Louis County 80	06412209	40	\$40,000	No	No	No
St. Louis County 800	06417217	40	\$40,000	No	No	No
St. Louis County 801	06417217	40	\$40,000	No	No	No
St. Louis County 802	06417217	40	\$40,000	No	No	No
St. Louis County 803	06417218	40	\$40,000	No	No	No
St. Louis County 804	06417218	38	\$37,840	No	No	No
St. Louis County 805	06417218	40	\$40,000	No	No	No
St. Louis County 806	06417219	40	\$40,000	No	No	No
St. Louis County 807	06417219	40	\$40,000	No	No	No
St. Louis County 808	06417219	37	\$36,700	No	No	No
St. Louis County 809	06417219	37	\$36,690	No	No	No
St. Louis County 81	06412209	39	\$39,400	No	No	No
St. Louis County 810	06417219	40	\$40,000	No	No	No
St. Louis County 811	06417219	40	\$40,000	No	No	No
St. Louis County 812	06417219	40	\$40,000	No	No	No
St. Louis County 813	06417219	37	\$36,680	No	No	No
St. Louis County 814	06417219	37	\$36,670	No	No	No
St. Louis County 815	06417219	40	\$40,000	No	No	No
St. Louis County 816	06417219	40	\$40,000	No	No	No
St. Louis County 817	06417220	40	\$40,000	No	No	No
St. Louis County 818	06417220	40	\$40,000	No	No	No
St. Louis County 819	06417220	40	\$40,000	No	No	No
St. Louis County 82	06412209	40	\$39,850	No	No	No
St. Louis County 820	06417222	40	\$40,000	No	No	No
St. Louis County 821	06517233	40	\$40,000	No	No	No
St. Louis County 822	06517233	40	\$40,000	No	No	No
St. Louis County 823	06517233	40	\$40,000	No	No	No
St. Louis County 824	06517233	40	\$40,000	No	No	No
St. Louis County 825	06517233	40	\$40,000	No	No	No
St. Louis County 826	06517233	40	\$40,000	No	No	No
St. Louis County 827	06517233	33	\$33,310	No	No	No
St. Louis County 828	06517233	33	\$33,310	No	No	No
St. Louis County 829	06517233	34	\$33,510	No	No	No
St. Louis County 83	06412210	40	\$40,000	No	No	No
St. Louis County 830	06517233	34	\$33,510	No	No	No
St. Louis County 831	06517234	40	\$40,000	No	No	No
St. Louis County 832	06517234	40	\$40,000	No	No	No
St. Louis County 833	06517234	40	\$40,000	No	No	No
St. Louis County 834	06517234	40	\$40,000	No	No	No
St. Louis County 835	06517234	40	\$40,000	No	No	No
St. Louis County 836	06517234	40	\$40,000	No	No	No
St. Louis County 837	06517229	40	\$40,000	No	No	No
St. Louis County 838	06517230	40	\$40,000	No	No	No
St. Louis County 839	06517230	40	\$40,000	No	No	No
St. Louis County 84	06412210	40	\$40,000	No	No	No
St. Louis County 840	06517230	41	\$40,550	No	No	No
St. Louis County 841	06517230	41	\$40,850	No	No	No

St. Louis County 842	06517230	40	\$40,000	No	No	No
St. Louis County 843	06517230	40	\$40,000	No	No	No
St. Louis County 844	06517231	42	\$42,170	No	No	No
St. Louis County 845	06517231	40	\$40,000	No	No	No
St. Louis County 846	06517231	40	\$40,000	No	No	No
St. Louis County 847	06517231	40	\$40,000	No	No	No
St. Louis County 848	06517231	40	\$40,000	No	No	No
St. Louis County 849	06517231	40	\$40,000	No	No	No
St. Louis County 85	06412210	40	\$40,000	No	No	No
St. Louis County 850	06517231	43	\$42,550	No	No	No
St. Louis County 851	06517231	29	\$28,890	No	No	No
St. Louis County 852	06517231	30	\$29,850	No	No	No
St. Louis County 853	06517232	40	\$40,000	No	No	No
St. Louis County 854	06517232	40	\$40,000	No	No	No
St. Louis County 855	06517232	40	\$40,000	No	No	No
St. Louis County 856	06517232	31	\$30,640	No	No	No
St. Louis County 857	06517232	33	\$32,660	No	No	No
St. Louis County 858	06517233	40	\$40,000	No	No	No
St. Louis County 859	06517212	40	\$40,000	No	No	No
St. Louis County 86	06412210	40	\$40,000	No	No	No
St. Louis County 860	06517212	40	\$40,000	No	No	No
St. Louis County 861	06517212	40	\$40,000	No	No	No
St. Louis County 862	06517212	40	\$40,000	No	No	No
St. Louis County 863	06517214	40	\$40,000	No	No	No
St. Louis County 864	06517214	40	\$40,000	No	No	No
St. Louis County 865	06517214	40	\$40,000	No	No	No
St. Louis County 866	06517219	40	\$40,000	No	No	No
St. Louis County 867	06517219	40	\$40,000	No	No	No
St. Louis County 868	06517219	40	\$40,000	No	No	No
St. Louis County 869	06517219	40	\$39,870	No	No	No
St. Louis County 87	06412210	40	\$40,000	No	No	No
St. Louis County 870	06517219	40	\$40,000	No	No	No
St. Louis County 871	06517219	40	\$40,000	No	No	No
St. Louis County 872	06517219	40	\$40,000	No	No	No
St. Louis County 873	06517220	40	\$40,000	No	No	No
St. Louis County 874	06517220	40	\$40,000	No	No	No
St. Louis County 875	06517221	40	\$40,000	No	No	No
St. Louis County 876	06517221	40	\$40,000	No	No	No
St. Louis County 877	06517221	40	\$40,000	No	No	No
St. Louis County 878	06517221	40	\$40,000	No	No	No
St. Louis County 879	06517221	40	\$40,000	No	No	No
St. Louis County 88	06412210	40	\$40,000	No	No	No
St. Louis County 880	06517221	40	\$40,000	No	No	No
St. Louis County 881	06517221	40	\$40,000	No	No	No
St. Louis County 882	06517222	40	\$40,000	No	No	No
St. Louis County 883	06517222	40	\$40,000	No	No	No
St. Louis County 884	06517227	40	\$40,000	No	No	No
St. Louis County 885	06517227	40	\$40,000	No	No	No
St. Louis County 886	06517227	40	\$40,000	No	No	No
St. Louis County 887	06517227	40	\$40,000	No	No	No
St. Louis County 888	06517228	40	\$40,000	No	No	No
St. Louis County 889	06517228	40	\$40,000	No	No	No
St. Louis County 89	06412210	40	\$40,000	No	No	No
St. Louis County 890	06517228	40	\$40,000	No	No	No
St. Louis County 891	06517228	40	\$40,000	No	No	No
St. Louis County 892	06517228	40	\$40,000	No	No	No
St. Louis County 893	06517228	40	\$40,000	No	No	No
St. Louis County 894	06517228	40	\$40,000	No	No	No
St. Louis County 895	06517229	40	\$40,000	No	No	No
St. Louis County 896	06517229	40	\$40,000	No	No	No
St. Louis County 897	06517229	40	\$40,000	No	No	No
St. Louis County 898	06517229	40	\$40,000	No	No	No

St. Louis County 899	06517229	40	\$40,000	No	No	No
St. Louis County 9	06412203	45	\$44,930	No	No	No
St. Louis County 90	06412210	40	\$40,000	No	No	No
St. Louis County 900	06517229	40	\$40,000	No	No	No
St. Louis County 901	06517229	40	\$40,000	No	No	No
St. Louis County 902	06517229	40	\$40,000	No	No	No
St. Louis County 903	06517229	40	\$40,000	No	No	No
St. Louis County 904	06517229	40	\$40,000	No	No	No
St. Louis County 905	06517229	40	\$40,000	No	No	No
St. Louis County 906	06517211	40	\$40,000	No	No	No
St. Louis County 907	06517211	40	\$40,000	No	No	No
St. Louis County 908	06517211	40	\$40,000	No	No	No
St. Louis County 909	06517211	40	\$40,000	No	No	No
St. Louis County 91	06412211	40	\$40,000	No	No	No
St. Louis County 910	06517211	40	\$40,000	No	No	No
St. Louis County 911	06517212	40	\$40,000	No	No	No
St. Louis County 912	06617203	40	\$40,000	No	No	No
St. Louis County 913	06617203	40	\$40,000	No	No	No
St. Louis County 914	06617203	40	\$40,000	No	No	No
St. Louis County 915	06617203	40	\$40,000	No	No	No
St. Louis County 916	06617203	40	\$40,000	No	No	No
St. Louis County 917	06617204	35	\$35,000	No	No	No
St. Louis County 918	06617204	40	\$40,000	No	No	No
St. Louis County 919	06617204	40	\$40,000	No	No	No
St. Louis County 92	06412211	40	\$40,000	No	No	No
St. Louis County 920	06617210	40	\$40,000	No	No	No
St. Louis County 921	06617210	40	\$40,000	No	No	No
St. Louis County 922	06617215	40	\$40,000	No	No	No
St. Louis County 923	06617215	40	\$40,000	No	No	No
St. Louis County 924	06617215	40	\$40,000	No	No	No
St. Louis County 925	06617215	40	\$40,000	No	No	No
St. Louis County 926	06617217	40	\$40,000	No	No	No
St. Louis County 927	06617220	40	\$40,000	No	No	No
St. Louis County 928	06617220	40	\$40,000	No	No	No
St. Louis County 929	06617220	40	\$40,000	No	No	No
St. Louis County 93	06412211	40	\$40,000	No	No	No
St. Louis County 930	06717225	20	\$20,000	No	No	No
St. Louis County 931	06717226	40	\$40,000	No	No	No
St. Louis County 932	06717235	40	\$40,000	No	No	No
St. Louis County 933	05618233	25	\$25,360	No	No	No
St. Louis County 934	06418202	40	\$40,000	No	No	No
St. Louis County 935	06418202	40	\$40,000	No	No	No
St. Louis County 936	06418202	40	\$40,000	No	No	No
St. Louis County 937	06418202	40	\$40,000	No	No	No
St. Louis County 938	06418202	40	\$40,000	No	No	No
St. Louis County 939	06418203	46	\$45,850	No	No	No
St. Louis County 94	06412219	40	\$40,000	No	No	No
St. Louis County 940	06418203	46	\$45,550	No	No	No
St. Louis County 941	06418203	40	\$40,000	No	No	No
St. Louis County 942	06418203	40	\$40,000	No	No	No
St. Louis County 943	06418203	40	\$40,000	No	No	No
St. Louis County 944	06418203	40	\$40,000	No	No	No
St. Louis County 945	06418203	40	\$40,000	No	No	No
St. Louis County 946	06418203	40	\$40,000	No	No	No
St. Louis County 947	06418203	40	\$40,000	No	No	No
St. Louis County 948	06418204	40	\$40,000	No	No	No
St. Louis County 949	06418204	40	\$40,000	No	No	No
St. Louis County 95	06412220	40	\$40,000	No	No	No
St. Louis County 950	06418204	40	\$40,000	No	No	No
St. Louis County 951	06418204	40	\$40,000	No	No	No
St. Louis County 952	06418204	40	\$40,000	No	No	No
St. Louis County 953	06418204	40	\$40,000	No	No	No

St. Louis County 954	06418205	40	\$40,000	No	No	No
St. Louis County 955	06418205	40	\$40,000	No	No	No
St. Louis County 956	06418205	40	\$40,000	No	No	No
St. Louis County 957	06418205	40	\$40,000	No	No	No
St. Louis County 958	06418235	40	\$40,000	No	No	No
St. Louis County 959	05418208	40	\$40,000	No	No	No
St. Louis County 96	06412220	40	\$40,000	No	No	No
St. Louis County 960	05418208	40	\$40,000	No	No	No
St. Louis County 961	05418209	40	\$40,000	No	No	No
St. Louis County 962	06018212	40	\$40,000	No	No	No
St. Louis County 963	06018212	40	\$40,000	No	No	No
St. Louis County 964	06018212	40	\$40,000	No	No	No
St. Louis County 965	06018212	40	\$40,000	No	No	No
St. Louis County 966	06018212	37	\$36,910	No	No	No
St. Louis County 967	06018219	37	\$37,430	No	No	No
St. Louis County 968	06018214	40	\$40,000	No	No	No
St. Louis County 969	06018223	40	\$40,000	No	No	No
St. Louis County 97	06412220	40	\$40,000	No	No	No
St. Louis County 970	06018224	40	\$40,000	No	No	No
St. Louis County 971	06018224	40	\$40,000	No	No	No
St. Louis County 972	06118202	40	\$40,240	No	No	No
St. Louis County 973	06118202	40	\$40,400	No	No	No
St. Louis County 974	06118202	40	\$40,000	No	No	No
St. Louis County 975	06118203	40	\$40,000	No	No	No
St. Louis County 976	06118206	40	\$40,000	No	No	No
St. Louis County 977	06118218	40	\$40,000	No	No	No
St. Louis County 978	06118218	40	\$40,000	No	No	No
St. Louis County 979	06118218	41	\$41,020	No	No	No
St. Louis County 98	06412221	40	\$40,000	No	No	No
St. Louis County 980	06118218	41	\$40,870	No	No	No
St. Louis County 981	06118230	40	\$40,000	No	No	No
St. Louis County 982	06118230	40	\$40,000	No	No	No
St. Louis County 983	06118230	40	\$40,000	No	No	No
St. Louis County 984	06118231	40	\$40,000	No	No	No
St. Louis County 985	06118231	40	\$40,000	No	No	No
St. Louis County 986	06118231	40	\$40,480	No	No	No
St. Louis County 987	06118231	40	\$40,000	No	No	No
St. Louis County 988	06118231	40	\$40,000	No	No	No
St. Louis County 989	06118231	40	\$40,000	No	No	No
St. Louis County 99	06412221	40	\$40,000	No	No	No
St. Louis County 990	06118203	40	\$40,000	No	No	No
St. Louis County 991	06118205	17	\$17,390	No	No	No
St. Louis County 992	06118205	36	\$36,140	No	No	No
St. Louis County 993	06118206	40	\$40,000	No	No	No
St. Louis County 994	06118206	40	\$40,000	No	No	No
St. Louis County 995	06118205	2	\$2,100	No	No	No
St. Louis County 996	06218235	41	\$41,280	No	No	No
St. Louis County 997	06218235	41	\$41,400	No	No	No
St. Louis County 998	06218235	42	\$41,580	No	No	No
St. Louis County 999	06318201	31	\$30,950	No	No	No

Section 2a - Protect Parcel with Bldgs

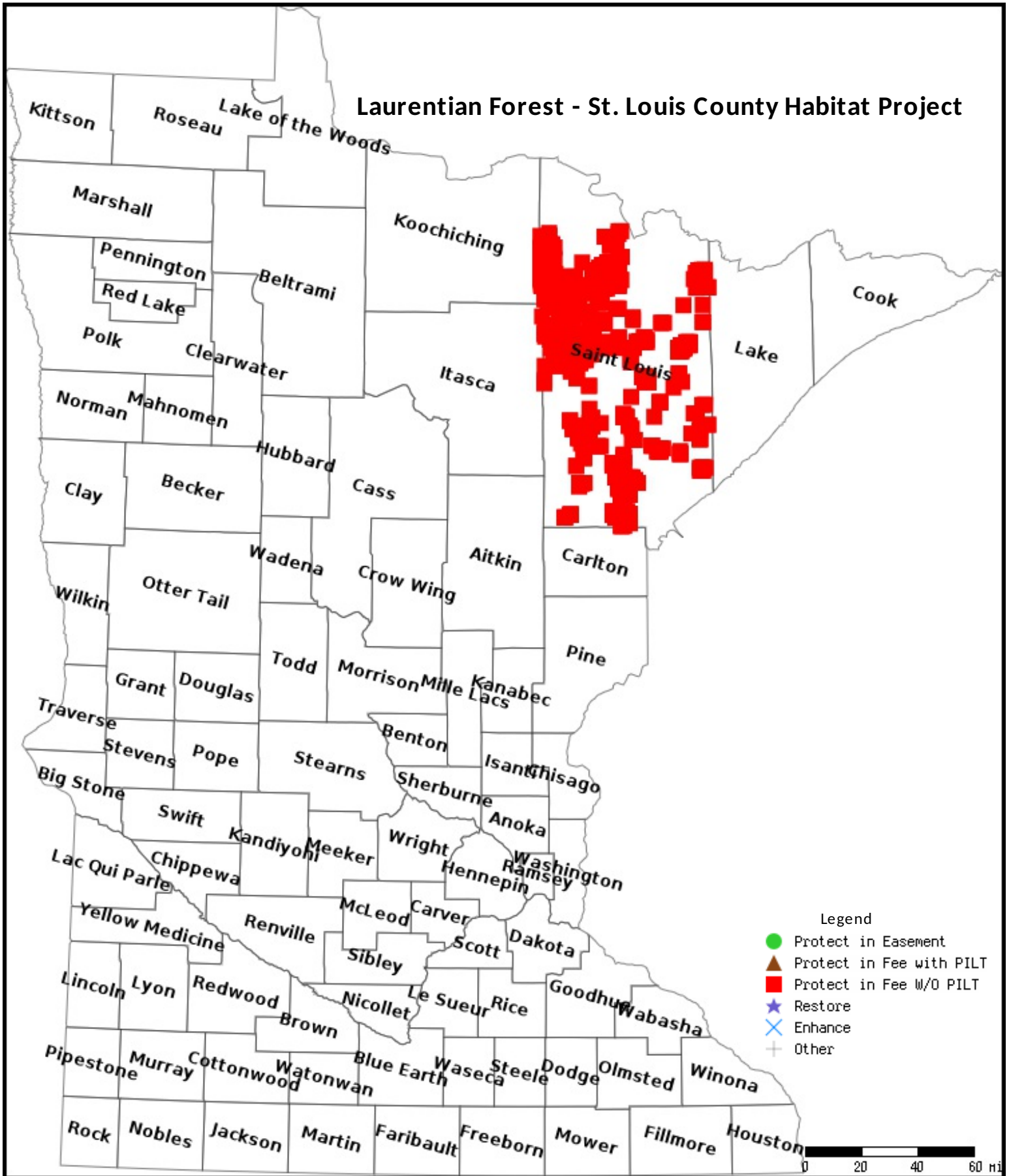
No parcels with an activity type protect and has buildings.

Section 3 - Other Parcel Activity

No parcels with an other activity type.

Parcel Map

Laurentian Forest - St. Louis County Habitat Project



Data Generated From Parcel List

Laurentian Forest – St. Louis County Habitat Project



THE
CONSERVATION FUND



Project partners Minnesota Deer Hunters Association (MDHA), Ruffed Grouse Society (RGS), and The Conservation Fund (TCF), in coordination with St. Louis County (SLC), seek to acquire approximately 7,000 - 8,000 acres of forest habitat at risk of being converted to non-forest uses in St. Louis County.

Problem Addressed By Project

Forest Fragmentation in St. Louis County

The past two decades have seen significant restructuring in the timber industry that has changed the northern forest and put habitat and public access at risk. Since 1998, more than 500,000 acres of industrial forest lands have changed ownership. In and near the focus area of this project, this parcelization trend continues to be prevalent and continues to reduce forest habitat. This trend is exemplified through land sales made by the Potlatch Corporation (Potlatch), which once owned 345,000 acres in the northern forest and now holds only 160,000 acres. In St. Louis County specifically, Potlatch ownership has dropped from 110,000 acres to 70,000 acres. This divestiture continues as Potlatch has sold, or is in the process of selling, over 175 parcels in St. Louis County since 2013.

Project Goals

Acquire in Fee High Priority Parcels that Maintain Intact, Large Blocks of Forest Habitat

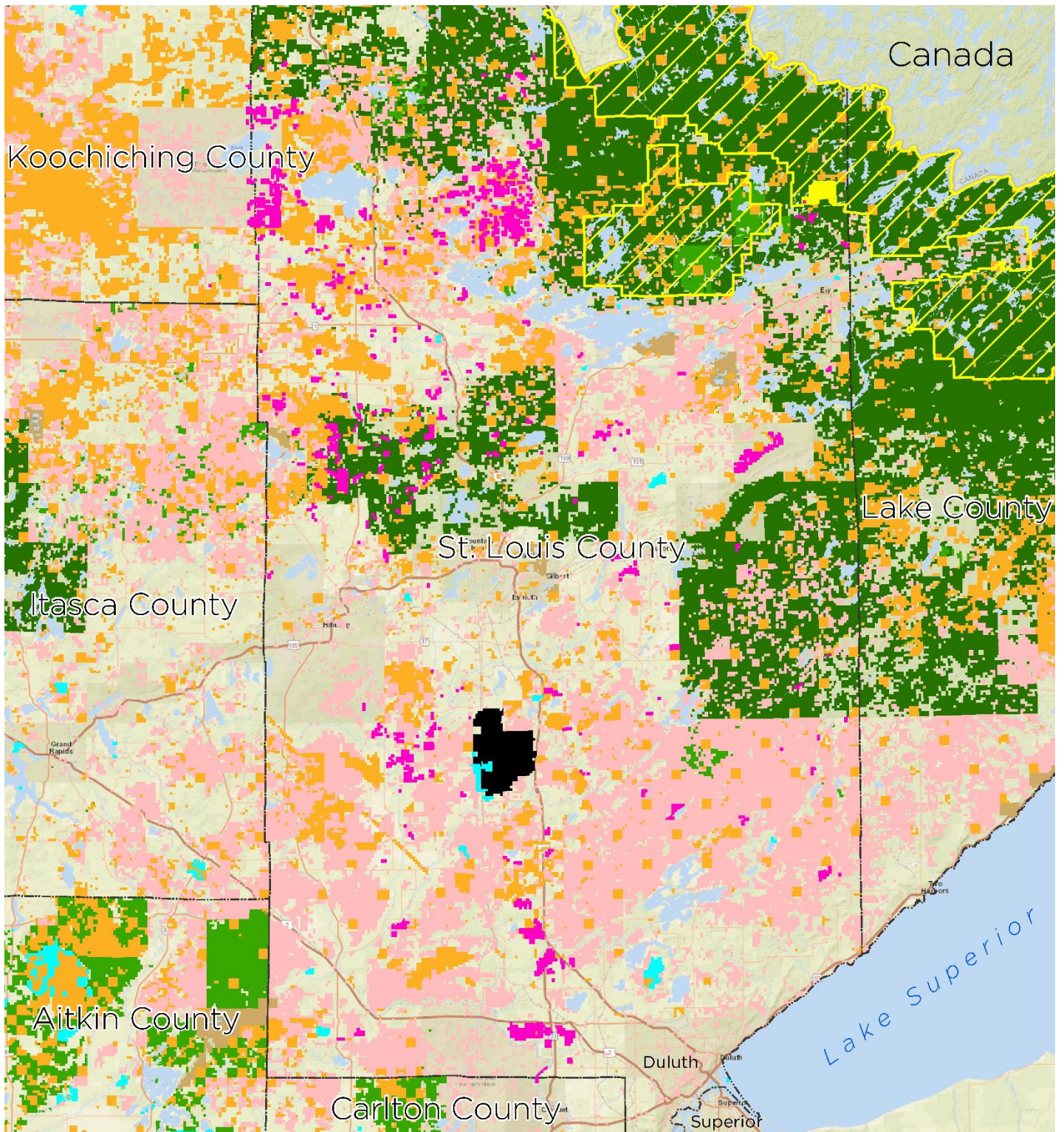
Project partners, in coordination with St. Louis County, will complete a GIS modeling analysis using the following criteria to prioritize parcels targeted for acquisition:

- 1) Habitat quality;
- 2) Adjacency to other large forest blocks, with an emphasis on lands managed by St. Louis County;
- 3) Immediacy of threat of conversion; and
- 4) Potential to acquire parcels where mineral rights have not been severed.

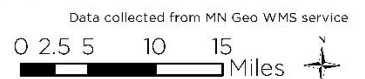
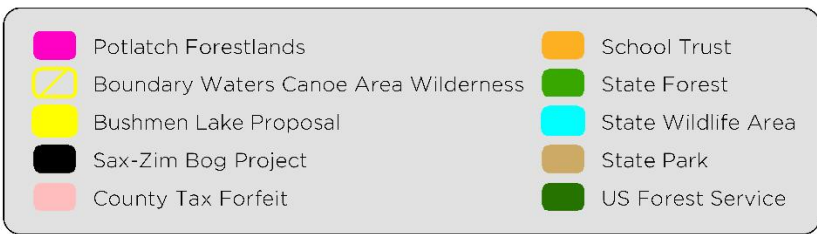
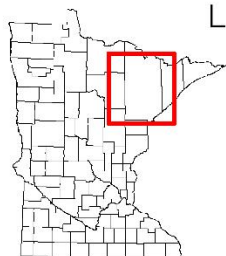
A project map illustrating Potlatch lands and their connectivity to public lands is shown on the back side of this page.

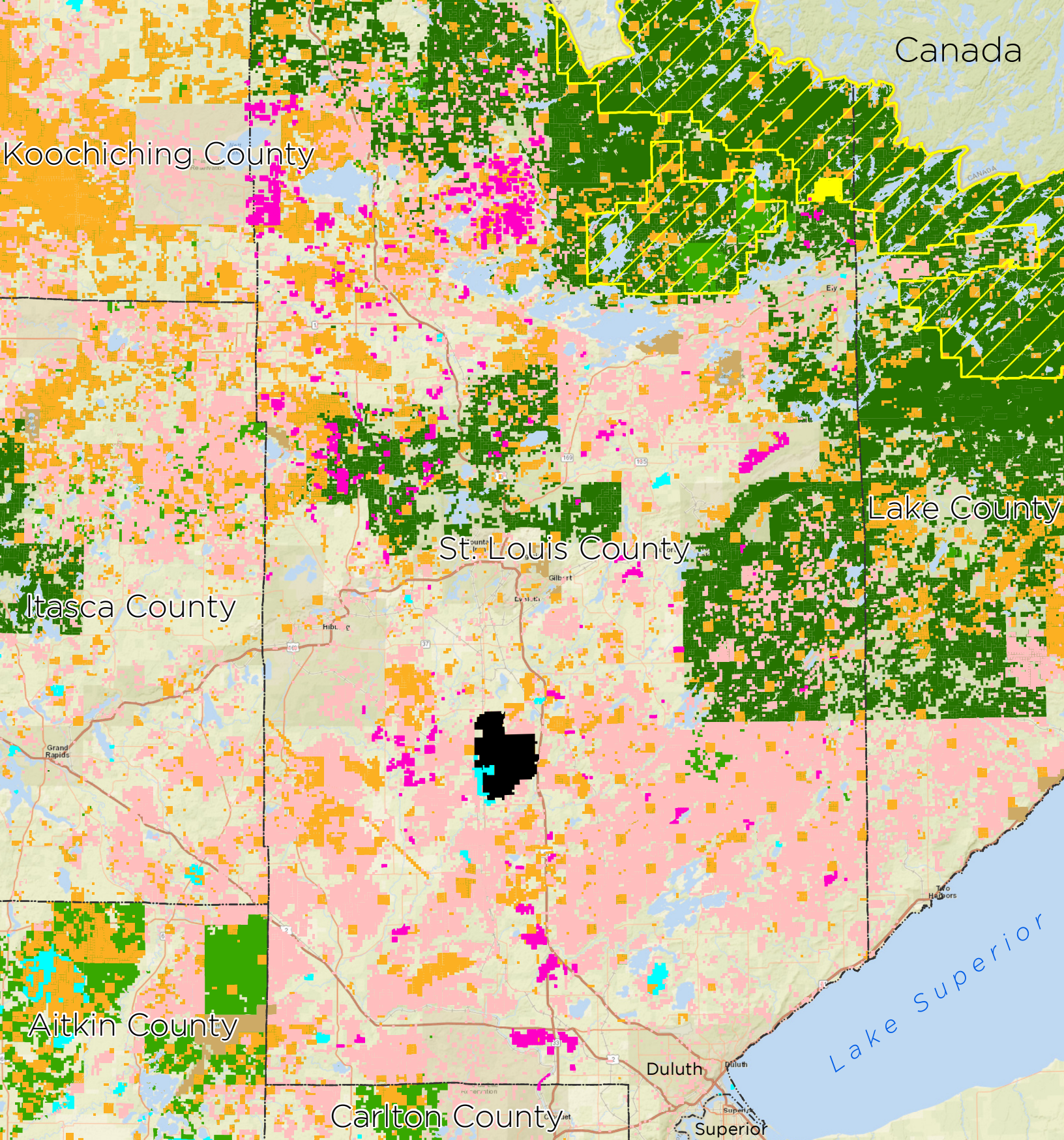
The project proposes to acquire approximately 7,000 – 8,000 acres of Potlatch lands, comprised of the parcels with the highest habitat benefits.

Following acquisition from Potlatch, St. Louis County will hold and manage all project lands.



Laurentian Forest - St. Louis County Habitat Project

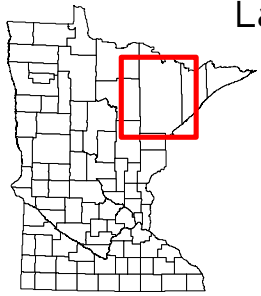




Laurentian Forest - St. Louis County Habitat Project

Data collected from MN Geo WMS service
 0 2.5 5 10 15 Miles

- | | | | |
|--|---------------------------------------|--|---------------------|
| | Potlatch Forestlands | | School Trust |
| | Boundary Waters Canoe Area Wilderness | | State Forest |
| | Bushmen Lake Proposal | | State Wildlife Area |
| | Sax-Zim Bog Project | | State Park |
| | County Tax Forfeit | | US Forest Service |





Resolution
of the
Board of County Commissioners
St. Louis County, Minnesota
Adopted on: May 24, 2016 Resolution No. 16-327
Offered by Commissioner: Nelson

**Minnesota Deer Hunters Association, The Conservation Fund and
Ruffed Grouse Society Habitat Protection Project**

WHEREAS, The Minnesota Deer Hunters Association (MDHA) is a non-profit organization that promotes habitat, educates youth in outdoor education and firearms safety, and advocates on behalf of Minnesota's deer hunters; and

WHEREAS, The Ruffed Grouse Society (RGS) is a non-profit organization that works to improve woodland habitat for ruffed grouse, American woodcock and many other kinds of forest wildlife; and

WHEREAS, The Conservation Fund (TCF) is a non-profit organization that finds solutions to land and water conservation issues benefiting both the environment and the economy; and

WHEREAS, MDHA and RGS have formed a new partnership that will combine the resources of both organizations to protect forest habitat; and

WHEREAS, MDHA, TCF and RGS have the opportunity to acquire forest lands within St. Louis County that will preserve forest habitat, protect water resources, and provide public hunting and recreational opportunities on lands that currently may not be open to the public; and

WHEREAS, MDHA/RGS will submit an application to the Lessard-Sams Outdoor Heritage Council seeking Outdoor Heritage Funds to acquire said lands within St. Louis County; and

WHEREAS, If MDHA/RGS is successful in obtaining funding for its habitat project, MDHA, TCF and RGS will work closely with St. Louis County in reviewing and discussing potential parcel acquisitions before any parcels are purchased;

THEREFORE, BE IT RESOLVED, That the St. Louis County Board endorses the habitat project proposal developed by the Minnesota Deer Hunters Association, The Conservation Fund and the Ruffed Grouse Society, and supports full funding of the Minnesota Deer Hunters Association and the Ruffed Grouse Society's joint application to the Lessard-Sams Outdoor Heritage Council for this purpose.

Commissioner Nelson moved the adoption of the Resolution and it was declared adopted upon the following vote:
Yeas – Commissioners Jewell, Boyle, Dahlberg, Rukavina, Stauber, Nelson and Chair Raukar - 7
Nays – None

STATE OF MINNESOTA
Office of County Auditor, ss.
County of St. Louis

I, DONALD DICKLICH, Auditor of the County of St. Louis, do hereby certify that I have compared the foregoing with the original resolution filed in my office on the 24th day of May, A.D. 2016, and that this is a true and correct copy.

WITNESS MY HAND AND SEAL OF OFFICE at Duluth, Minnesota, this 24th day of May, A.D., 2016.

DONALD DICKLICH, COUNTY AUDITOR

By

Nancy Nilson
Chief Deputy Auditor