

Lessard-Sams Outdoor Heritage Council Laws of Minnesota 2017 Accomplishment Plan



Date: October 21, 2016

Program or Project Title: Anoka Sand Plain Habitat Conservation - Phase V

Funds Recommended: \$ 1,130,000

Manager's Name: Wiley Buck
Organization: Great River Greening
Address: 35 W Water Street
Address 2: Suite 201
City: St. Paul, MN 55107
Office Number: 651-665-9500
Mobile Number: 651-775-8759
Email: wbuck@greatrivergreening.org

Legislative Citation: ML 2017, Ch. X, Art. X, Sec. X

Appropriation Language:

County Locations: Anoka, Benton, Isanti, Morrison, and Stearns.

Regions in which work will take place:

- Forest / Prairie Transition
- Metro / Urban
- Northern Forest

Activity types:

- Enhance
- Protect in Easement
- Restore

Priority resources addressed by activity:

- Forest
- Habitat
- Prairie
- Wetlands

Abstract:

The Anoka Sandplain Partnership proposal will restore/enhance 245 acres and 1.20 mi shoreline; and protect 80 acres of wildlife habitat on priority public lands principally within the Anoka Sandplain Ecological Region within the Metropolitan Urbanizing and Forest-Prairie Transition sections.

Design and scope of work:

The Anoka Sandplain Partnership includes >26 government agencies/organizations working to protect, enhance, and restore lands and waters of the Anoka Sandplain eco-region. Five of the organizations are direct recipients of OHF funds, working together to protect, restore, and enhance priority habitats on state lands, land owned by local government units, and private holdings. A sixth partner is contributing cash match and significant in-kind.

The following outcomes will be realized:

1. Restoration/enhancement of 245 acres and 1.20 miles of shoreline, for priority habitat improvement and connectivity.
2. Permanent protection on 80 acres of priority habitat through conservation easement.
3. Engage local communities in project activities, where cost-effective, to encourage long-term success.

Anticipated projects by priority category are:

PRISTINE HABITATS

1. Gordie Mikkelson WMA (Anoka Conservation District): Enhance 80 acres of 'High' MCBS wetland and forest.

SWAP (State Wildlife Action Plan) PRIORITY HABITATS (PRAIRIE, SAVANNA, NON-FORESTED WETLAND)

2. Carlos Avery WMA (Great River Greening): Restoration of 35 acres of oak savanna
3. Blaine Wetland Sanctuary South (Great River Greening): Enhance 147 acres of shallow peat basin wetland, with T&E species

THREATENED WILD&SCENIC RIVER STREAMBANK

4. High Meadows Rum River Re-Meander (Isanti SWCD): Reconnect over 1 mile of main channel aquatic and shoreline habitat by blocking man-made shortcut
5. Mississippi River Streambank (Stearns SWCD): Restoration of 475' of major river streambank using high habitat value toe-wood design.

ALL PRIORITY HABITAT CATEGORIES

6. Conservation Easement (Minnesota Land Trust): Permanently protect 80 ac of habitat in one or more of the priority categories.

If funding proves sufficient, the following "Tier 2" projects will be pursued:

- * Five WMA Woodland Enhancements: 327 acres of oak woodland across 5 WMAs enhanced with first burns.
 - * Twin Lakes SNA: Enhance 48 ac oak woodland
 - * Three WMA Prairie Reconstructions: 26 acres of prairie restorations across 3 WMAs
 - * Mickelson Floodplain and Shoreline: Enhancement of 10 ac forest and 0.20 mile of Rum River shoreline with floodplain tree planting.
 - * Expansion of Carlos Avery, Blaine Wetland Sanctuary, and Conservation Easements projects.
- All of these "Tier 2" projects address the same priority habitats as the anticipated projects.

How does the request address MN habitats that have: historical value to fish and wildlife, wildlife species of greatest conservation need, MN County Biological Survey data, and/or rare, threatened and endangered species inventories:

We review all of these data sets during the course of our project development, and many of our proposed sites are ranked highly for having examples of high quality MCBS-ranked natural communities and concentrations of rare species. The Anoka Sandplain is known to provide home to some 115 state-listed plants and animals, the most diverse LSOHC Ecological subsection (in terms of rare species) in the state. We are compelled to ensure their long-term viability of wildlife deemed species of greatest conservation need is ensured. This proposal provides a major step in that direction.

For instance, five state-listed plant species occur in our project sites: 1. Twisted yellow eyed grass (*Xyris torta*, Endangered); 2. One flowered broomrape (*Orbanche uniflora*, Threatened); 3. Lance-leaved violet (*Viola lanceolata*, Threatened); 4. Vermont blackberry (*Rubus vermontanus*, Special Concern); and 5. Beach heather (*Hudsonia tomentosa*, Threatened). With enhancement, it is anticipated that nine additional rare vascular plants will germinate/emerge from the existing seedbank: 1. Cross-leaved milkwort (*Polygala cruciata* var. *aquilonia*, Endangered); 2. Marginated rush (*Juncus marginatus*, Endangered); 3. Tubercled rein orchid (*Platanthera flava* var. *herbiola*, Threatened); 4. Stipuled blackberry (*Rubus stipulatus*, Endangered); 5. Half-bristly blackberry (*Rubus semisetosus*, Threatened); 6. Toothcup (*Rotala ramosior*, Threatened); 7. Clinton's bulrush (*Trichophorum clintonii*, Threatened); 8. St. Lawrence grape fern (*Sceptridium rugulosum*, Special Concern); and 9. Autumn Fimbristylis (*Fimbristylis autumnalis*, Special Concern).

Habitat will be restored/enlarged for three to four rare animal populations: 1. Northern Barrens Tiger Beetle (*Cincindelia patruela patruela*, Special Concern); 2. Leonards Skipper (*Hesperia leonardus leonardus*, Special Concern); 3. Blanding's Turtle (*Emydoidea blandingii*, Threatened); and (on a Tier II site), 4. Red-shouldered hawk (*Buteo lineatus*).

Wild turkey and waterfowl priority sites are found in our project list; in addition, the Wild&Scenic River projects are in river stretches known for smallmouth bass fishing.

Describe the science based planning and evaluation model used:

We use a slate of information to target our actions, including the DNR's MCBS Sites of Biodiversity Significance, Regionally Ecological Significant Areas, and Habitat Corridors. We consider the Anoka Sandplain breakout of the Minnesota Comprehensive Wildlife Conservation Plan our Partnership's foundation for implementation plan guidance documents. We review all pertinent and available data sets during the course of our proposal and project development. Several of our sites are ranked 'highly' for having examples of

high quality MCBS-ranked natural communities and concentrations of rare species. Additionally, there are several WMA, SNA, Regionally Significant Ecological Areas and other designations which indicate these lands and waterways are of ecological importance.

DNR staff with expertise in prairie, forest, wetland, and aquatic habitat have worked to identify key species and to develop metrics that can be used to answer this question by LSOHC. The developed metrics are derived from existing data sources and/or scientific literature, to be used by DNR, BWSR, many of our ASP partners, to address enhancement of corridors and ecological complexes identified by MCBS, and to reduce fragmentation of habitats at a broad scale.

Minnesota Land Trust uses a published set of scientific criteria to choose the highest available cost:benefit for easement projects.

Protection of existing habitat and increasing connectivity between habitats via establishment of habitat/wildlife corridors is of great importance to the partnership and is vitally important to the long-term viability and sustainability of biodiversity, protection of threatened and endangered species, as well as game and non-game species throughout the region. Therefore, each of our project partner's endeavor to ensure that the best possible science based information is utilized to inform our projects planning and implementation.

Which sections of the Minnesota Statewide Conservation and Preservation Plan are applicable to this program:

- H1 Protect priority land habitats
- H5 Restore land, wetlands and wetland-associated watersheds

Which other plans are addressed in this program:

- Minnesota DNR Strategic Conservation Agenda
- Outdoor Heritage Fund: A 25 Year Framework

Which LSOHC section priorities are addressed in this program:

Forest / Prairie Transition:

- Protect, enhance, and restore wild rice wetlands, shallow lakes, wetland/grassland complexes, aspen parklands, and shoreland that provide critical habitat for game and nongame wildlife

Metro / Urban:

- Protect, enhance, and restore remnant native prairie, Big Woods forests, and oak savanna with an emphasis on areas with high biological diversity

Northern Forest:

- Protect shoreland and restore or enhance critical habitat on wild rice lakes, shallow lakes, cold water lakes, streams and rivers, and spawning areas

Relationship to other funds:

- Environmental and Natural Resource Trust Fund
- Clean Water Fund
- Parks and Trails Fund

Describe the relationship of the funds:

Match from the Clean Water Fund is committed to the Rum River High Meadows Re-Meander Project. In past years, Trust Fund allocations have been put toward terrace forest enhancement, and cedar revetment streambank enhancement at the Mickelson Rum River Floodplain / Streambank project site.

While the ASP Partnership is using and pursuing funds available through other state funds (Environmental and Natural Resources Trust Fund, Parks and Trails Fund, Clean Water Fund) to achieve its goals in the Anoka Sandplain, none of those funds are being accessed to simultaneously address the habitat restoration and enhancement needs proposed here. This proposal to LSOHC for Outdoor Heritage Fund support does not supplant any other sources of funds. In all cases, this proposal and the projects to be completed accelerate regional habitat work in the Anoka Sandplain.

How does this program include leverage in funds or other effort to supplement any OHF appropriation:

During proposal development and project planning and implementation, matching funds are sought. To date, verbal commitments have been received from TNC, City of Blaine; TNC has also shared significant in-kind mapping resources and will continue to do so. Other funds, namely NFWF Monarch Butterfly Conservation funds and OHF Clean Water Funds have been formally secured. Additional matching funds will continue to be sought. The proposed projects build upon an extensive public investment in public lands and greatly accelerates protection, enhancement and restoration of priority habitat in the Metropolitan Urbanizing, Forest-Prairie Transition, and Northern Forest zones. The proposed acquisitions and/or habitat enhancement and restoration could not proceed as rapidly or to as great an extent without access to OHF funds and certainly not within the same timeline. The OHF grant funds will not supplant any current state funding sources.

Describe the source and amount of non-OHF money spent for this work in the past:

Appropriation Year	Source	Amount
2007	(ACD) ENRTF - Conservation Partners	10000
2015	Stearns County in-kind -Engineering, RFP Process	11600

How will you sustain and/or maintain this work after the Outdoor Heritage Funds are expended:

Site-specific resource management plans will be utilized (and developed, if not already in place) to guide effective long-term management of targeted habitats/species. All land managers associated with sites included in this proposal have committed to the long-term maintenance of these habitat improvements in line with prescribed actions. A principle goal of this proposal is accelerate enhancement/restoration of respective sites and bring them to a point where on-going management costs are diminished and the resource can be effectively maintained over time.

The ASP Partnership is committed to working with respective land management agencies (local, state and federal) and conservation organizations in an on-going basis to identify and procure financial resources for maintaining these improvements as needed, bring volunteers to bear, and otherwise assist in reducing the financial and capacity burden in the face of fiscal constraints.

Explain the things you will do in the future to maintain project outcomes:

Year	Source of Funds	Step 1	Step 2	Step 3
ACD - 2019-2022	Anoka SWCD District Capacity Funding	Spot check	Retreat	
G R G - 2020-2030	Anoka SWCD	Assessment	Spot Treatment	Prescribed Fire
Isanti SWCD - 2019-2022	Contractor, Flood Money	Inspect	Burn 3-year rotation	Pursue flood money if damaged due to flooding
MLT - 2023 (and in perpetuity)	Minnesota Land Trust	Annual monitoring of easements in perpetuity	Enforcement as needed	
Stearns SWCD - 2019-2022	Stearns County Parks	Inspect	Replace plantings	Status check after storm events

Activity Details:

If funded, this program will meet all applicable criteria set forth in MS 97A.056 - **Yes**

Will there be planting of corn or any crop on OHF land purchased or restored in this program - **No**

Will the eased land be open for public use - **No**

Is the land you plan to acquire free of any other permanent protection - **Yes**

Who will manage the easement?

Minnesota Land Trust

Who will be the easement holder?

Minnesota Land Trust

Are there currently trails or roads on any of the acquisitions on the parcel list - **Yes**

Describe the types of trails or roads and the allowable uses:

Most MLT easements will have driveways, field roads and trails located on them. Often, these established trails and roads are permitted in the terms of the easement and can be used by the landowner for personal use if their use does not significantly impact the conservation values of the property; creation of new roads/trails or expansion of existing ones is not allowed.

Will the trails or roads remain and uses continue to be allowed after OHF acquisition - **Yes**

How will maintenance and monitoring be accomplished:

Existing trails and roads are identified in the project baseline report and will be monitored annually as part of the Minnesota Land Trust's stewardship and enforcement protocols. Maintenance of permitted roads/trails will be the responsibility of the landowner.

Will new trails or roads be developed or improved as a result of the OHF acquisition - **No**

Will restoration and enhancement work follow best management practices including MS 84.973 Pollinator Habitat Program - **Yes**

Is the activity on permanently protected land per 97A.056, subd 13(f), tribal lands, and/or public waters per MS 103G.005, Subd. 15 - **Yes (WMA, SNA, Private Land, County/Municipal, Public Waters)**

Accomplishment Timeline:

Activity	Approximate Date Completed
GRC - Restoration plans completed across all proposed sites	2018
GRC - Restorations/enhancements completed across all sites	Spring 2022
Isanti SWCD - Engineering designs complete, bids requested	Fall 2018
Isanti SWCD - Channel reconstruction following engineering designs initiated	Winter 2020
Isanti SWCD - Enhanced plugging/ seeding for pollinator habitat using volunteers	Fall 2021
ACD - Basal bark herbicide application to buckthorn in transitional and wetland areas	Late fall 2018
Stearns SWCD - Streambank restoration (toe wood and bio-engineering installation)	Late fall 2018
Stearns SWCD - Streambank buffer restoration and habitat	Summer 2018
MLT - Select and acquire conservation easements	Summer 2020
MLT - Complete habitat enhancement work	Spring 2022

Date of Final Report Submission: 11/1/2022

Federal Funding:

Do you anticipate federal funds as a match for this program - **No**

Outcomes:

Programs in the northern forest region:

- Increased availability and improved condition of riparian forests and other habitat corridors *Ecological monitoring, data measured against DNR established norms and OHF protocols, and community engagement in long-term maintenance and monitoring activities.*

Programs in forest-prairie transition region:

- Wetland and upland complexes will consist of native prairies, restored prairies, quality grasslands, and restored shallow lakes and wetlands *Ecological monitoring, data measured against DNR established norms and OHC protocols, and community engagement in long-term maintenance and monitoring activities.*

Programs in metropolitan urbanizing region:

- A network of natural land and riparian habitats will connect corridors for wildlife and species in greatest conservation need *Ecological monitoring, data measured against DNR established norms and OHC protocols, and community engagement in long-term maintenance and monitoring activities.*

Budget Spreadsheet

Budget reallocations up to 10% do not require an amendment to the Accomplishment Plan

How will this program accommodate the reduced appropriation recommendation from the original proposed requested amount

The Anoka Sandplain partners have reduced the total number of enhancement/restoration projects from 14 to 5, and reduced the acreage to be enhanced/restored in 2 of the remaining projects. The acreage to be protected has been reduced from 500 to 80 acres.

Total Amount of Request: \$ 1130000

Budget and Cash Leverage

BudgetName	LSOHC Request	Anticipated Leverage	Leverage Source	Total
Personnel	\$134,500	\$39,800	Stearns Co. Parks, NFWF Monarch Fund, City of Blaine, Greening, Anoka SWCD	\$174,300
Contracts	\$695,600	\$26,000	TNC, Lando wner	\$721,600
Fee Acquisition w/ PILT	\$0	\$0		\$0
Fee Acquisition w/o PILT	\$0	\$0		\$0
Easement Acquisition	\$200,000	\$45,000	Private	\$245,000
Easement Stewardship	\$40,000	\$0		\$40,000
Travel	\$5,400	\$0		\$5,400
Professional Services	\$31,400	\$5,000	Clean Water Funds	\$36,400
Direct Support Services	\$14,300	\$10,600	MLT	\$24,900
DNR Land Acquisition Costs	\$0	\$0		\$0
Capital Equipment	\$0	\$0		\$0
Other Equipment/Tools	\$100	\$0		\$100
Supplies/Materials	\$8,700	\$2,100	TNC, Lando wner	\$10,800
DNR IDP	\$0	\$0		\$0
Total	\$1,130,000	\$128,500		\$1,258,500

Personnel

Position	FTE	Over # of years	LSOHC Request	Anticipated Leverage	Leverage Source	Total
Anoka Conservation District Staff	0.10	3.00	\$25,000	\$2,500	Anoka SWCD	\$27,500
Minnesota Land Trust Staff	0.20	3.00	\$54,000	\$0		\$54,000
Isanti SWCD Staff	0.09	3.00	\$19,500	\$0		\$19,500
G RG Staff	0.15	3.00	\$26,300	\$31,300	NFWF Monarch Fund, City of Blaine, Greening	\$57,600
Stearns County SWCD Staff	0.06	3.00	\$9,700	\$6,000	Stearns Co. Parks	\$15,700
Total	0.60	15.00	\$134,500	\$39,800		\$174,300

Budget and Cash Leverage by Partnership

BudgetName	Partnership	LSOHC Request	Anticipated Leverage	Leverage Source	Total
Personnel	Anoka Conservation District	\$25,000	\$2,500	Anoka SWCD	\$27,500
Contracts	Anoka Conservation District	\$10,000	\$1,000	Lando wner	\$11,000
Fee Acquisition w/ PILT	Anoka Conservation District	\$0	\$0		\$0
Fee Acquisition w/o PILT	Anoka Conservation District	\$0	\$0		\$0
Easement Acquisition	Anoka Conservation District	\$0	\$0		\$0
Easement Stewardship	Anoka Conservation District	\$0	\$0		\$0
Travel	Anoka Conservation District	\$0	\$0		\$0
Professional Services	Anoka Conservation District	\$0	\$0		\$0
Direct Support Services	Anoka Conservation District	\$0	\$0		\$0
DNR Land Acquisition Costs	Anoka Conservation District	\$0	\$0		\$0
Capital Equipment	Anoka Conservation District	\$0	\$0		\$0
Other Equipment/Tools	Anoka Conservation District	\$0	\$0		\$0
Supplies/Materials	Anoka Conservation District	\$6,000	\$600	Lando wner	\$6,600
DNR IDP	Anoka Conservation District	\$0	\$0		\$0
Total		\$41,000	\$4,100		\$45,100

Personnel - Anoka Conservation District

Position	FTE	Over # of years	LSOHC Request	Anticipated Leverage	Leverage Source	Total
Anoka Conservation District Staff	0.10	3.00	\$25,000	\$2,500	Anoka SWCD	\$27,500
Total	0.10	3.00	\$25,000	\$2,500		\$27,500

Budget Name	Partnership	LSOHC Request	Anticipated Leverage	Leverage Source	Total
Personnel	Minnesota Land Trust	\$54,000	\$0		\$54,000
Contracts	Minnesota Land Trust	\$12,000	\$0		\$12,000
Fee Acquisition w/ PILT	Minnesota Land Trust	\$0	\$0		\$0
Fee Acquisition w/o PILT	Minnesota Land Trust	\$0	\$0		\$0
Easement Acquisition	Minnesota Land Trust	\$200,000	\$45,000	Private	\$245,000
Easement Stewardship	Minnesota Land Trust	\$40,000	\$0		\$40,000
Travel	Minnesota Land Trust	\$2,000	\$0		\$2,000
Professional Services	Minnesota Land Trust	\$31,400	\$0		\$31,400
Direct Support Services	Minnesota Land Trust	\$10,600	\$10,600	MLT	\$21,200
DNR Land Acquisition Costs	Minnesota Land Trust	\$0	\$0		\$0
Capital Equipment	Minnesota Land Trust	\$0	\$0		\$0
Other Equipment/Tools	Minnesota Land Trust	\$0	\$0		\$0
Supplies/Materials	Minnesota Land Trust	\$0	\$0		\$0
DNR IDP	Minnesota Land Trust	\$0	\$0		\$0
Total		\$350,000	\$55,600		\$405,600

Personnel - Minnesota Land Trust

Position	FTE	Over # of years	LSOHC Request	Anticipated Leverage	Leverage Source	Total
Minnesota Land Trust Staff	0.20	3.00	\$54,000	\$0		\$54,000
Total	0.20	3.00	\$54,000	\$0		\$54,000

Budget Name	Partnership	LSOHC Request	Anticipated Leverage	Leverage Source	Total
Personnel	Isanti SWCD	\$19,500	\$0		\$19,500
Contracts	Isanti SWCD	\$210,000	\$25,000	TNC	\$235,000
Fee Acquisition w/ PILT	Isanti SWCD	\$0	\$0		\$0
Fee Acquisition w/o PILT	Isanti SWCD	\$0	\$0		\$0
Easement Acquisition	Isanti SWCD	\$0	\$0		\$0
Easement Stewardship	Isanti SWCD	\$0	\$0		\$0
Travel	Isanti SWCD	\$200	\$0		\$200
Professional Services	Isanti SWCD	\$0	\$5,000	Clean Water Funds	\$5,000
Direct Support Services	Isanti SWCD	\$1,300	\$0		\$1,300
DNR Land Acquisition Costs	Isanti SWCD	\$0	\$0		\$0
Capital Equipment	Isanti SWCD	\$0	\$0		\$0
Other Equipment/Tools	Isanti SWCD	\$0	\$0		\$0
Supplies/Materials	Isanti SWCD	\$0	\$1,500	TNC	\$1,500
DNR IDP	Isanti SWCD	\$0	\$0		\$0
Total		\$231,000	\$31,500		\$262,500

Personnel - Isanti SWCD

Position	FTE	Over # of years	LSOHC Request	Anticipated Leverage	Leverage Source	Total
Isanti SWCD Staff	0.09	3.00	\$19,500	\$0		\$19,500
Total	0.09	3.00	\$19,500	\$0		\$19,500

Budget Name	Partnership	LSOHC Request	Anticipated Leverage	Leverage Source	Total
Personnel	Great River Greening	\$26,300	\$31,300	NFWF Monarch Fund, City of Blaine, Greening	\$57,600
Contracts	Great River Greening	\$310,300	\$0		\$310,300
Fee Acquisition w/ PILT	Great River Greening	\$0	\$0		\$0
Fee Acquisition w/o PILT	Great River Greening	\$0	\$0		\$0
Easement Acquisition	Great River Greening	\$0	\$0		\$0
Easement Stewardship	Great River Greening	\$0	\$0		\$0
Travel	Great River Greening	\$3,200	\$0		\$3,200
Professional Services	Great River Greening	\$0	\$0		\$0
Direct Support Services	Great River Greening	\$2,400	\$0		\$2,400
DNR Land Acquisition Costs	Great River Greening	\$0	\$0		\$0
Capital Equipment	Great River Greening	\$0	\$0		\$0
Other Equipment/Tools	Great River Greening	\$100	\$0		\$100
Supplies/Materials	Great River Greening	\$2,700	\$0		\$2,700
DNR IDP	Great River Greening	\$0	\$0		\$0
Total		\$345,000	\$31,300		\$376,300

Personnel - Great River Greening

Position	FTE	Over # of years	LSOHC Request	Anticipated Leverage	Leverage Source	Total
GRG Staff	0.15	3.00	\$26,300	\$31,300	NFWF Monarch Fund, City of Blaine, Greening	\$57,600
Total	0.15	3.00	\$26,300	\$31,300		\$57,600

Budget Name	Partnership	LSOHC Request	Anticipated Leverage	Leverage Source	Total
Personnel	Stearns SWCD	\$9,700	\$6,000	Stearns Co. Parks	\$15,700
Contracts	Stearns SWCD	\$153,300	\$0		\$153,300
Fee Acquisition w/ PILT	Stearns SWCD	\$0	\$0		\$0
Fee Acquisition w/o PILT	Stearns SWCD	\$0	\$0		\$0
Easement Acquisition	Stearns SWCD	\$0	\$0		\$0
Easement Stewardship	Stearns SWCD	\$0	\$0		\$0
Travel	Stearns SWCD	\$0	\$0		\$0
Professional Services	Stearns SWCD	\$0	\$0		\$0
Direct Support Services	Stearns SWCD	\$0	\$0		\$0
DNR Land Acquisition Costs	Stearns SWCD	\$0	\$0		\$0
Capital Equipment	Stearns SWCD	\$0	\$0		\$0
Other Equipment/Tools	Stearns SWCD	\$0	\$0		\$0
Supplies/Materials	Stearns SWCD	\$0	\$0		\$0
DNR IDP	Stearns SWCD	\$0	\$0		\$0
Total		\$163,000	\$6,000		\$169,000

Personnel - Stearns SWCD

Position	FTE	Over # of years	LSOHC Request	Anticipated Leverage	Leverage Source	Total
Stearns County SWCD Staff	0.06	3.00	\$9,700	\$6,000	Stearns Co. Parks	\$15,700
Total	0.06	3.00	\$9,700	\$6,000		\$15,700

Amount of Request: \$1,130,000
Amount of Leverage: \$128,500
Leverage as a percent of the Request: 11.37%
DSS + Personnel: \$148,800
As a % of the total request: 13.17%

How did you determine which portions of the Direct Support Services of your shared support services is direct to this program:

Greening and Isanti SWCD calculated direct support services at 9% of LSOHC Funding Request for Personnel. Minnesota Land Trust calculated direct support services at 50% of their current application for a federal indirect expense rate, with the other 50% coming as

leverage through the Land Trust's fundraising.

Does the amount in the contract line include R/E work?

Yes, 98%. Note: Isanti SWCD anticipates subcontracting with Great River Greening (at LOSHC personnel rates) to restore/enhance the vegetation on the High Meadows plug in the man-made Rum River channel.

Describe and explain leverage source and confirmation of funds:

NFWF Monarch Conservation and Clean Water funds are secured. The Nature Conservancy has committed \$25,000 toward the High Meadows project, and \$5,000 to the Tier II Mickelson project. Additional leverage funding is from a variety of sources, including municipal, private, and ngo's.

Output Tables

Table 1a. Acres by Resource Type

Type	Wetlands	Prairies	Forest	Habitats	Total
Restore	0	35	0	0	35
Protect in Fee with State PILT Liability	0	0	0	0	0
Protect in Fee W/O State PILT Liability	0	0	0	0	0
Protect in Easement	0	0	0	80	80
Enhance	147	0	50	15	212
Total	147	35	50	95	327

Table 1b. How many of these Prairie acres are Native Prairie?

Type	Native Prairie
Restore	0
Protect in Fee with State PILT Liability	0
Protect in Fee W/O State PILT Liability	0
Protect in Easement	0
Enhance	0
Total	0

Table 2. Total Funding by Resource Type

Type	Wetlands	Prairies	Forest	Habitats	Total
Restore	\$0	\$120,000	\$0	\$0	\$120,000
Protect in Fee with State PILT Liability	\$0	\$0	\$0	\$0	\$0
Protect in Fee W/O State PILT Liability	\$0	\$0	\$0	\$0	\$0
Protect in Easement	\$0	\$0	\$0	\$350,000	\$350,000
Enhance	\$258,000	\$0	\$8,000	\$394,000	\$660,000
Total	\$258,000	\$120,000	\$8,000	\$744,000	\$1,130,000

Table 3. Acres within each Ecological Section

Type	Metro Urban	ForestPrairie	SE Forest	Prairie	N Forest	Total
Restore	35	0	0	0	0	35
Protect in Fee with State PILT Liability	0	0	0	0	0	0
Protect in Fee W/O State PILT Liability	0	0	0	0	0	0
Protect in Easement	80	0	0	0	0	80
Enhance	197	1	0	0	14	212
Total	312	1	0	0	14	327

Table 4. Total Funding within each Ecological Section

Type	Metro Urban	ForestPrairie	SE Forest	Prairie	N Forest	Total
Restore	\$120,000	\$0	\$0	\$0	\$0	\$120,000
Protect in Fee with State PILT Liability	\$0	\$0	\$0	\$0	\$0	\$0
Protect in Fee W/O State PILT Liability	\$0	\$0	\$0	\$0	\$0	\$0
Protect in Easement	\$350,000	\$0	\$0	\$0	\$0	\$350,000
Enhance	\$266,000	\$163,000	\$0	\$0	\$231,000	\$660,000
Total	\$736,000	\$163,000	\$0	\$0	\$231,000	\$1,130,000

Table 5. Average Cost per Acre by Resource Type

Type	Wetlands	Prairies	Forest	Habitats
Restore	\$0	\$3429	\$0	\$0
Protect in Fee with State PILT Liability	\$0	\$0	\$0	\$0
Protect in Fee W/O State PILT Liability	\$0	\$0	\$0	\$0
Protect in Easement	\$0	\$0	\$0	\$4375
Enhance	\$1755	\$0	\$160	\$26267

Table 6. Average Cost per Acre by Ecological Section

Type	Metro/Urban	Forest/Prairie	SE Forest	Prairie	Northern Forest
Restore	\$3429	\$0	\$0	\$0	\$0
Protect in Fee with State PILT Liability	\$0	\$0	\$0	\$0	\$0
Protect in Fee W/O State PILT Liability	\$0	\$0	\$0	\$0	\$0
Protect in Easement	\$4375	\$0	\$0	\$0	\$0
Enhance	\$1350	\$163000	\$0	\$0	\$16500

Target Lake/Stream/River Feet or Miles

1.24

Parcel List

For restoration and enhancement programs ONLY: Managers may add, delete, and substitute projects on this parcel list based upon need, readiness, cost, opportunity, and/or urgency so long as the substitute parcel/project forwards the constitutional objectives of this program in the Project Scope table of this accomplishment plan. The final accomplishment plan report will include the final parcel list.

Section 1 - Restore / Enhance Parcel List

Anoka

Name	TRDS	Acres	Est Cost	Existing Protection?
ACD - Mikkelson WMA	03302205	80	\$41,000	Yes
G RG - Blaine Wetland Sanctuary South	03123215	117	\$224,000	Yes
G RG - Carlos Avery WMA	03322214	35	\$120,000	Yes

Benton

Name	TRDS	Acres	Est Cost	Existing Protection?
Tier 2 G RG - 3 WMA Prairie Reconstructions	03628224	26	\$71,000	Yes

Isanti

Name	TRDS	Acres	Est Cost	Existing Protection?
Isanti SWCD - High Meadows Rum Re-Meander	03623208	14	\$231,000	Yes
Tier 2 G RG - Mickelson Floodplain	03623220	10	\$27,001	Yes
Tier 2 G RG - Twin Lakes SNA (Phase 2)	03422211	48	\$125,900	Yes

Morrison

Name	TRDS	Acres	Est Cost	Existing Protection?
Tier 2 G RG - 5 WMA Woodland Enhancements	03932212	327	\$346,600	Yes

Stearns

Name	TRDS	Acres	Est Cost	Existing Protection?
Stearns SWCD - Mississippi River Park Shoreline	12628216	1	\$162,800	Yes

Section 2 - Protect Parcel List

No parcels with an activity type protect.

Section 2a - Protect Parcel with Bldgs

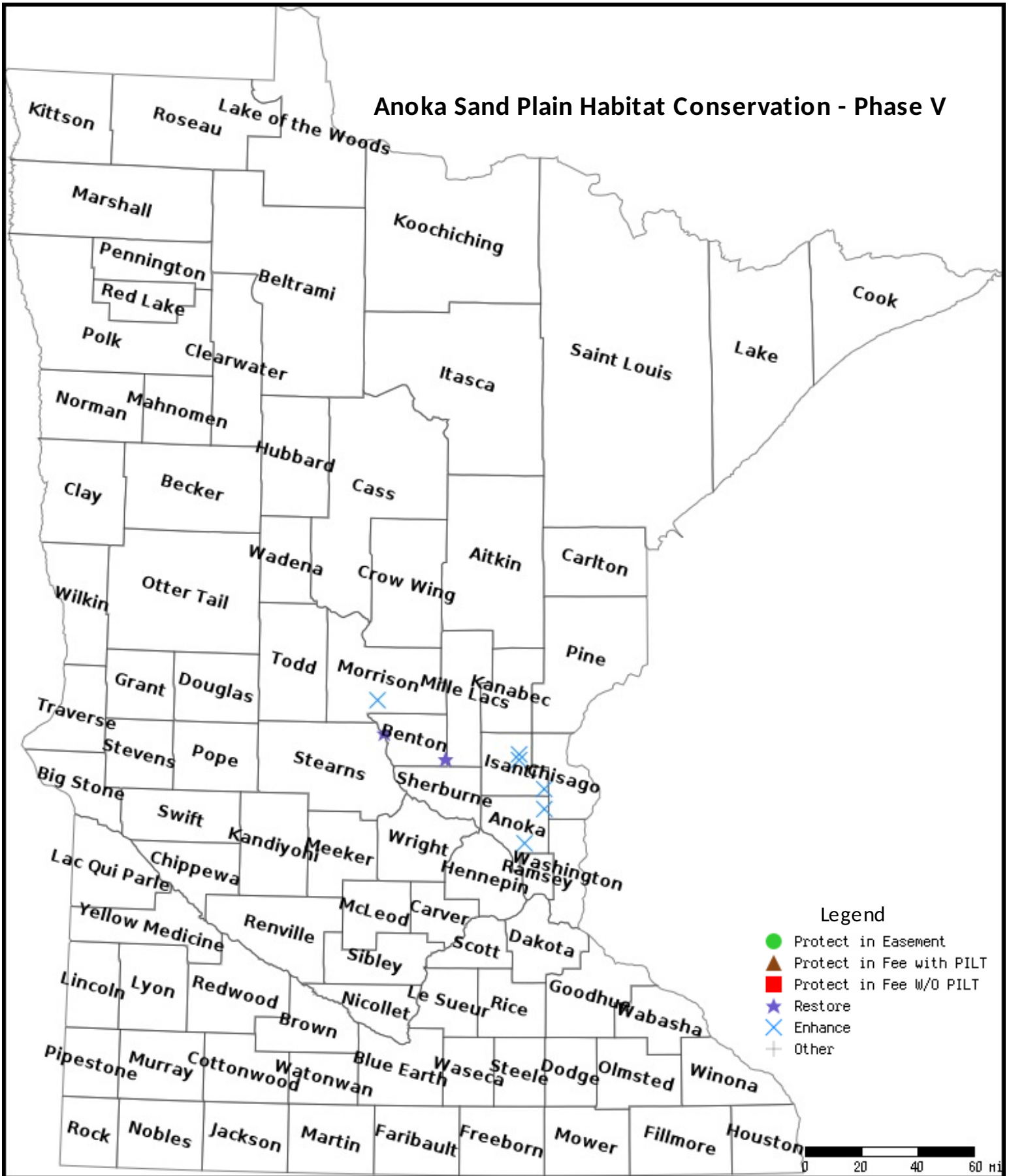
No parcels with an activity type protect and has buildings.

Section 3 - Other Parcel Activity

No parcels with an other activity type.

Parcel Map

Anoka Sand Plain Habitat Conservation - Phase V



Data Generated From Parcel List

Anoka Sandplains Partnership

-Minnesota Land Trust Easement Sign-Up Criteria-



The Anoka Sandplains Partnership (ASP) protects, restores, and enhances Minnesota's rich and diverse array of wildlife habitat within the Anoka Sandplains ecological subsection. Funded through the Lessard-Sams Outdoor Heritage Fund, the Minnesota Land Trust (Land Trust) employs perpetual conservation easements in collaboration with private landowners to protect important wildlife habitat (forest, wetlands, and grasslands) and their associated wildlife.

Through a competitive Request for Proposal (RFP) process, landowners will submit an application to the Land Trust for protection of their land via conservation easement. At the close of the open submission period, submitted projects are initially scored and ranked relative to one another on two primary factors: 1) ecological significance, and 2) cost.

Ecological Significance is determined through an analysis of three subfactors:

- Quantity – the size of habitat and/or length of shoreline associated with a parcel, and abundance of Species of Greatest Conservation Need (SGCN) and Threatened & Endangered (T&E) species;
- Quality – the condition of the associated habitat and populations of SGCN and T&E species;
- Landscape Context – the extent and condition of natural habitat surrounding the parcel, and the degree to which adjacent property has been protected.

Cost is determined in large part by the bid amount proposed by the landowner, and ultimately substantiated through an appraisal process. Landowners are given additional credit through whole or partial donation of appraised easement value.

These two factors inform an initial score that is used to initially rank a proposed parcel relative to others. Subsequent discussions with each landowner participating in the program allow the Land Trust to gain a better sense of the landowner's desires for and expected uses of the property, and to ground-truth the parcel's ecological condition. These post-proposal evaluations may result in proposed parcels moving up or down on the prioritization list. This additional evaluation allows for the Land Trust to most effectively target priority lands for protection.

The Land Trust has set certain minimum criteria for inclusion into the program:

- Lands must be located within the ASP Program area.
- Lands must have a maximum of 20% of total proposed easement area in agricultural use; areas targeted for restoration are not included in this acre cap.
- Lands must contain high quality examples of native plant communities (forests, prairies, woodlands, etc.), trout streams, shoreland along rivers and streams, or rare and threatened species.
- Lands cannot be enrolled previously in permanent protection programs (e.g., RIM).

Additional requirements are stipulated within the body of each conservation easement, as pertinent to the special characteristics of the land and the particular situation of the landowner.

The Land Trust's ranking and selection system is informed by ranking and prioritization modules used by the Minnesota DNR, The Nature Conservancy, and nationally by the Natural Heritage Data Center Network. Utilizing a ranking system that prioritizes projects based upon ecological value and cost enables the Land Trust to secure conservation easements that effectively and efficiently protect Minnesota's wildlife resources.

Initial Ranking of Applications									
<i>Existing Ecological Significance</i>	<i>Units Affected</i>	<i>Scoring framework for prioritizing conservation value among applicants through an RFP process.</i>							
		1. Size/Abundance of Habitat Protected by Easement (Maximum 100 pts)							
	0	Total acres of native plant community or extent of target feature within proposed easement							
	0	Feet of shoreline to be protected by an easement							
		2. Diversity/Quality of Natural Resources to be Protected by the Easement (Maximum 100 pts)							
	0	Average quality of existing native plant communities							
	0	Number and quality of rare species on parcel; rarity of the species							
		3. Landscape Context (Maximum 100 pts)							
	0	Location of parcel relative to biodiversity "hotspots" or priority areas delineated in conservation plans							
	0	Location of parcel relative to other conservation lands							
	0	Location of parcel relative to existing moderate-high quality native plant communities; degree of habitat fragmentation							
		Total Score (Maximum 300 pts)							
<i>Cost</i>	<i>Score</i>								
		4. Cost							
	0	Bid amount (\$)/acre							
	0	Estimated Donative value (\$)/acre							
Revised Scoring of Applications Following Discussion with Landowner									
<i>Potential Impacts by Landowner</i>	<i>Score Adjustments (+/-)</i>	<i>Enhancement or downgrade of existing biodiversity significance scores based on easement rights retained by the landowner, easement actions required of the landowner, and their potential impact on existing biodiversity.</i>							
		5. Size/Abundance of Habitat Protected by Easement							
	0	Total acres of native plant community or extent of target feature impacted by retained rights or proposed actions if exercised.							
		6. Diversity/Quality of Natural Resources to be Protected by the Easement							
	0	Estimated potential impact on diversity/quality of native plant community or extent of target feature by retained rights or proposed actions if exercised.							
	0	Estimated potential impact on number/quality of rare species resulting from retained rights or proposed actions if exercised.							
0	REVISED BIODIVERSITY SIGNIFICANCE SCORE								

Lessard-Sams Outdoor Heritage Council Comparison Report

Program Title: 2017 - Anoka Sand Plain Habitat Conservation - Phase V

Organization: Great River Greening

Manager: Wiley Buck

Budget

Requested Amount: \$4,735,100

Appropriated Amount: \$1,130,000

Percentage: 23.86%

Budget Item	Total Requested		Total Appropriated		Percentage of Request	
	LSOHC Request	Anticipated Leverage	Appropriated Amount	Anticipated Leverage	Percentage of Request	Percentage of Leverage
Personnel	\$403,200	\$92,100	\$134,500	\$39,800	33.36%	43.21%
Contracts	\$2,256,200	\$33,300	\$695,600	\$26,000	30.83%	78.08%
Fee Acquisition w/ PILT	\$0	\$0	\$0	\$0	-	-
Fee Acquisition w/o PILT	\$0	\$0	\$0	\$0	-	-
Easement Acquisition	\$1,600,000	\$320,000	\$200,000	\$45,000	12.50%	14.06%
Easement Stewardship	\$200,000	\$0	\$40,000	\$0	20.00%	-
Travel	\$16,100	\$0	\$5,400	\$0	33.54%	-
Professional Services	\$161,500	\$5,000	\$31,400	\$5,000	19.44%	100.00%
Direct Support Services	\$67,400	\$50,000	\$14,300	\$10,600	21.22%	21.20%
DNR Land Acquisition Costs	\$0	\$0	\$0	\$0	-	-
Capital Equipment	\$0	\$0	\$0	\$0	-	-
Other Equipment/Tools	\$1,000	\$100	\$100	\$0	10.00%	0.00%
Supplies/Materials	\$29,700	\$2,600	\$8,700	\$2,100	29.29%	80.77%
DNR IDP	\$0	\$1,500	\$0	\$0	-	0.00%
Total	\$4,735,100	\$504,600	\$1,130,000	\$128,500	23.86%	25.47%

How will this program accommodate the reduced appropriation recommendation from the original proposed requested amount?

The Anoka Sandplain partners have reduced the total number of enhancement/restoration projects from 14 to 5, and reduced the acreage to be enhanced/restored in 2 of the remaining projects. The acreage to be protected has been reduced from 500 to 80 acres.

Output

Table 1a. Acres by Resource Type

Type	Total Proposed	Total in AP	Percentage of Proposed
Restore	86	35	40.70%
Protect in Fee with State PILT Liability	0	0	-
Protect in Fee W/O State PILT Liability	0	0	-
Protect in Easement	500	80	16.00%
Enhance	1,243	212	17.06%

Table 2. Total Funding by Resource Type

Type	Total Proposed	Total in AP	Percentage of Proposed
Restore	304,400	120,000	39.42%
Protect in Fee with State PILT Liability	0	0	-
Protect in Fee W/O State PILT Liability	0	0	-
Protect in Easement	2,211,600	350,000	15.83%
Enhance	2,219,100	660,000	29.74%

Table 3. Acres within each Ecological Section

Type	Total Proposed	Total in AP	Percentage of Proposed
Restore	86	35	40.70%
Protect in Fee with State PILT Liability	0	0	-
Protect in Fee W/O State PILT Liability	0	0	-
Protect in Easement	500	80	16.00%
Enhance	1,243	212	17.06%

Table 4. Total Funding within each Ecological Section

Type	Total Proposed	Total in AP	Percentage of Proposed
Restore	304,400	120,000	39.42%
Protect in Fee with State PILT Liability	0	0	-
Protect in Fee W/O State PILT Liability	0	0	-
Protect in Easement	2,211,600	350,000	15.83%
Enhance	2,219,100	660,000	29.74%