

# Lessard-Sams Outdoor Heritage Council

## Laws of Minnesota 2017 Accomplishment Plan



**Date:** October 21, 2016

**Program or Project Title:** RIM Buffers for Wildlife and Water - Phase VII

**Funds Recommended:** \$ 5,333,000

**Manager's Name:** Tabor Hoek  
**Organization:** BWSR  
**Address:** 1400 E. Lyon St.  
**City:** Marshall, MN 56258  
**Office Number:** 507-537-7260  
**Email:** tabor.hoek@state.mn.us  
**Website:** www.bwsr.state.mn.us

**Legislative Citation:** ML 2017, Ch. X, Art. X, Sec. X

**Appropriation Language:**

**County Locations:** Not Listed

**Regions in which work will take place:**

- Forest / Prairie Transition
- Metro / Urban
- Prairie
- Southeast Forest

**Activity types:**

- Protect in Easement
- Restore

**Priority resources addressed by activity:**

- Prairie

### Abstract:

Utilizing the new CREP III partnership to secure permanent conservation easements, this Phase 7 continuation of the RIM Buffers Program will protect and restore riparian buffer areas, totaling 4,225 acres on approximately 264 easements. This Program will continue to utilize a science-based ranking and selection process and be implemented locally, working with SWCD, NRCS, and FSA staff in the 54 county CREP area. It is estimated that \$1 of OHF will be leveraged with \$1 of Clean Water Funds and at least \$4 of Federal funds through CREP.

### Design and scope of work:

The project area will consist of the 54 County CREP area and the expected results are a total of 4,225 acres of expanded habitat buffers on approximately 264 easements through this request. RIM Buffers uniquely leverages the Clean Water Fund and the Outdoor Heritage Fund to expand basic water quality buffers into high quality wildlife habitat. Outdoor Heritage Funds will double the size of Clean Water Fund (CWF) easements to provide additional wildlife benefits on areas that are not required by law or rule to have buffers, enhancing protection values from a water quality focus to a multi-benefit habitat-oriented corridor.

Due to the unique nature of the State's CWF/OHF match, each dollar of OHF is leveraged by 5:1, with five Federal & CWF dollars leveraged for each OHF dollar. OHF funded buffers, when linked to CWF buffers, will yield a total of 4,225 acres of buffers. Due to

guidance from LSOHC, only the acres (2,113) and funding (\$5,333,000) from OHF have been displayed in the Output Tables.

Minnesota continues to see a net loss of grasslands and CRP acres each year. This exodus is being driven by high land prices, increased pressure for alternative uses, and declining federal budgets for conservation programs. Minnesota's primary strategy to mitigate the loss of CRP is to target expiring contracts for enrollment into Continuous CRP practices (like buffers) and permanent easements.

RIM Buffer easements will be secured via Conservation Reserve Enhancement Program (CREP) permanent easement acquisition, utilizing both a 15 year CRP contract and permanent RIM easement. This will be Minnesota's third CREP, and is able to offer a large-scale impact due to the unique opportunity to utilize a substantial federal match. Over the five year CREP period, we look to enroll permanently protected buffers using a combination of the USDA Conservation Reserve Program (CRP) and the Reinvest in Minnesota (RIM) Reserve Program.

RIM Buffers is a partnership delivered locally by Soil and Water Conservation Districts (SWCDs) and at the State level by BWSR. In addition, the CREP partnership is possible through collaboration among many local, state and federal partners including the USDA-Farm Service Agency (FSA), USDA-Natural Resources Conservation Service (NRCS), Pheasants Forever (PF), the Minnesota Department of Natural Resources (MNDNR), Minnesota Department of Agriculture (MDA), Minnesota Pollution Control Agency (MPCA), Minnesota Department of Health (MDH), and over 70 supporting organizations and agencies.

BWSR staff will coordinate with federal partners on the overall CREP process and program oversight and will be responsible for easement acquisition. Local staff will promote CRP contracts and RIM easements, assist with easement processing and provide key essential technical assistance and project management services. Due to the reliance on local staff for implementation, the Farm Bill Assistance Partnership (FBAP) is included as a component in the RIM Buffers Program. There is increased local workload expected with CREP signup and implementation, as a significantly increased number of easements will be secured within the CREP III area throughout the CREP timeframe.

## **How does the request address MN habitats that have: historical value to fish and wildlife, wildlife species of greatest conservation need, MN County Biological Survey data, and/or rare, threatened and endangered species inventories:**

Buffers are commonly viewed as simply a water quality practice, but buffers have notable positive impacts on wildlife due their unique upland and riverine habitat interaction. This is especially true for expanded width buffers enrolled through this Program. Not only are upland grasslands protected or restored, detrimental impacts to stream-reliant biota is reduced. Many species of amphibians, such as southern MN's Northern Cricket Frog (endangered) rely on aquatic habitat during the breeding season and then spend most of their lives in upland habitat. In Southeastern MN, reptiles such as the Blanding's Turtle (endangered) rely on meandering streams, rivers, and adjacent lands.

The Sedge wren, a Species of Greatest Conservation Need (SGCN) most commonly associated with grassland habitat, is encountered in buffer areas. Bird use is influenced by buffer width, with greater widths experiencing greater abundance and diversity of birds and grassland species. However, bird use is negatively associated by the amount of edge exposure. As an effort to limit this exposure through this Program's scoring and ranking process, sites which may serve as corridors or expand current complexes are most desirable.

Diverse vegetation, access to a water resource, and protection from pesticides are important to Minnesota's native pollinator species. BWSR's native vegetation guidelines and pollinator initiative have outlined the RIM Program's commitment to protecting native pollinators. Complexes and corridors targeted through RIM Buffers provide areas that are safe from pesticides and are natural passageways for pollinators. Targeted pollinator species include the Monarch Butterfly and solitary bee species including Leafcutter Bees, Mason Bees, and Yellow-faced Bees.

Of the nearly 1200 known wildlife species in Minnesota, 292 species, or approximately one-fourth, are at risk because they are rare; their populations are declining due to loss of habitat. SGCN in the RIM Buffers area include the Five-lined Skink, Two-spotted Skipper, Northern Pintail, American Black Duck, Grasshopper Sparrow, Upland Sandpiper, Sedge Wren, Dickcissel, and Western Grebe. In addition to the SGCN, the threatened or endangered species targeted in this proposal include the Dakota Skipper and Poweshiek Skipperling.

## **Describe the science based planning and evaluation model used:**

Through a combination of targeted outreach, eligibility screening, and a scoring and ranking process, each site is considered on its benefits to the surrounding landscape, as well as the site-specific features which highlight the benefits of selection for permanent protection.

During the application process, a review of adjacent permanent habitat and easement size is conducted to indicate a site's usefulness as a corridor or extension to an existing habitat complex. In addition, other examples of the science-based targeting used include: drainage to shallow lakes, buffering along lakeshore, planned vegetative diversity, and proximity to land open to public hunting.

The Farm Service Agency and BWSR are currently formulating the signup criteria and scoring process, which will be finalized in the summer of 2016. However, with CREP we will utilize similar science-based considerations that have been historically used by the RIM Buffers Program. The Site Evaluation Form from the most recent RIM Buffers signup has been attached to this proposal for reference.

## Which sections of the Minnesota Statewide Conservation and Preservation Plan are applicable to this program:

- H2 Protect critical shoreland of streams and lakes
- H7 Keep water on the landscape

## Which other plans are addressed in this program:

- Long Range Plan for the Ring-Necked Pheasant in MN
- Outdoor Heritage Fund: A 25 Year Framework

## Which LSOHC section priorities are addressed in this program:

### Forest / Prairie Transition:

- Protect, enhance, and restore wild rice wetlands, shallow lakes, wetland/grassland complexes, aspen parklands, and shoreland that provide critical habitat for game and nongame wildlife

### Metro / Urban:

- Protect habitat corridors, with emphasis on the Minnesota, Mississippi, and St. Croix rivers (bluff to floodplain)

### Prairie:

- Protect expiring CRP lands

### Southeast Forest:

- Protect, enhance, and restore habitat for fish, game, and nongame wildlife in rivers, cold-water streams, and associated upland habitat

## Relationship to other funds:

- Environmental and Natural Resource Trust Fund
- Clean Water Fund

### Describe the relationship of the funds:

This project brings two of the major components of the Legacy Amendment together by matching OHF with the Clean Water Fund for the RIM Buffer Program. Partners will leverage the Outdoor Heritage Funds with CREP funding sources to permanently protect buffers within landscapes that add value for grassland wildlife.

Beginning in 2009, the BWSR has received FY10-11, FY12-13, FY14-15, and FY16-17 funding for a total of \$59.65 million through the Clean Water Fund (from the Clean Water, Land and Legacy Amendment) to establish and restore permanent RIM Reserve Riparian easements for buffers to reduce runoff in order to decrease sediment, pollutant and nutrient transport, reduce hydrological impacts to surface waters and increase infiltration for groundwater recharge.

The Farm Bill Assistance Partnership (FBAP) with BWSR, DNR, PF, NRCS, MASWCD, and SWCDs as primary partners, provides funding to SWCDs to utilize technicians to promote the conservation provisions of the Federal Farm Bill and other conservation program opportunities to private landowners. The Environment and Natural Resources Trust Fund (ENRTF) via LCCMR recommendations provided \$1.0M in FY10-11, \$625,000 in FY12-13, \$3.0M in FY 14-15 and \$1.0M in FY 16-17. With CREP, we will need funding of approximately \$4.5 million per year from all sources to support this effort.

As an indirect relationship, BWSR has also received funding in FY10-11, FY12-13, FY14-15, and FY16-17 totaling \$11 million from CWF for RIM Reserve easements in areas where the vulnerability of the drinking water supply management area is designated high or very high by the Minnesota Department of Health and in certain groundwater recharge areas in SE MN. These funds have not been matched with

OHF funds but have, as secondary benefits, put 1700 acres of wildlife habitat on the ground.

**How does this program include leverage in funds or other effort to supplement any OHF appropriation:**

The Governor and 5 State Agency leaders (BWSR, DNR, MDA, MPCA, and MDH) have supported a Minnesota Conservation Reserve Enhancement Program (CREP) for over 2 years. In December of 2015 the Governor submitted a CREP proposal to the USDA Secretary. Negotiations are nearly complete.

At a minimum, the CREP leverage will be \$4 of USDA funds for every \$2 of State funding. Since the State's contribution is split 1:1 between the Clean Water Fund and Outdoor Heritage Fund, each \$1 of OHF funds leverages a combination of \$5 of Clean Water Funds and federal USDA-FSA-CRP funds. This is a substantial increase in achievements that OHF will accomplish through this partnership. The combination of these unique opportunities produces a result of 4,225 acres instead of 704 acres of permanent protection.

**Describe the source and amount of non-OHF money spent for this work in the past:**

Appropriation Year	Source	Amount
2009 to 2015	Clean Water Fund	59,650,000
2008, 2011, 2012 and 2014	Bonding	17,640,206

**How will you sustain and/or maintain this work after the Outdoor Heritage Funds are expended:**

Once a RIM easement is acquired, BWSR is responsible for maintenance, inspection and monitoring into perpetuity. The BWSR partners with local SWCDs to carry-out oversight, monitoring and inspection of its conservation easements. Easements are inspected for the first five consecutive years beginning in the year after the easement is recorded. Thereafter, on-site inspections are performed every three years and compliance checks are performed in the other two years. SWCDs report to BWSR on each site inspection conducted and partners' staff document findings. A non-compliance procedure is implemented when potential violations or problems are identified.

Perpetual monitoring and stewardship costs have been calculated at \$6,500 per easement. This value is based on using local SWCD staff for monitoring and landowner relations and existing enforcement authorities. The amount listed for Easement Stewardship covers costs of the SWCD regular monitoring, BWSR oversight, and enforcement.

**Explain the things you will do in the future to maintain project outcomes:**

Year	Source of Funds	Step 1	Step 2	Step 3
2017-Ongoing	Stewardship Account	Compliance Checks first 5 years then every 3rd year.	Corrective actions of any violations	Enforcement action taken by MN Attorney General office
2017-Ongoing	Landowner Responsibility	Maintain compliance with easement terms		

**Activity Details:**

If funded, this program will meet all applicable criteria set forth in MS 97A.056 - **Yes**

Will there be planting of corn or any crop on OHF land purchased or restored in this program - **Yes**

Explain

In certain circumstances food plots for wildlife are an allowable use on RIM easements and must be part of an approved Conservation Plan. Food plots on narrow buffers, steep slopes and wet areas are not allowed. RIM policy limits food plots to 10% of the total easement area or 5 acres whichever is smaller. There is no cost share for establishment of food plots and upon termination the landowners must reestablish the vegetation as prescribed in the Conservation Plan at their own expense. Food plots are a rarely selected option by landowners, to date only 2.2% of RIM easements have food plots.

Are any of the crop types planted GMO treated - **No**

Will the eased land be open for public use - **No**

Is the land you plan to acquire free of any other permanent protection - **Yes**

Who will manage the easement?

BWSR will be the responsible party for monitoring and enforcing easements.

Who will be the easement holder?

BWSR will be the easement holder.

Are there currently trails or roads on any of the acquisitions on the parcel list - **Yes**

Describe the types of trails or roads and the allowable uses:

This appropriation is funding a program that will have a parcel list identified at a later time. Roads or trails are typically excluded from the easement area if they serve no beneficial purpose to easement maintenance, monitoring, or enforcement. Existing trails and roads are identified during the easement acquisition process. Some roads and trails, such as agricultural field accesses, are allowed to remain.

Will the trails or roads remain and uses continue to be allowed after OHF acquisition - **Yes**

How will maintenance and monitoring be accomplished:

The easements secured under this project will be managed as part of the MN Board of Water and Soil Resources (BWSR) RIM Reserve Program that has over 6,500 easements currently in place. Easements are monitored annually for each of the first 5 years and then every 3rd year after that. BWSR, in cooperation with Soil and Water Conservation Districts (SWCD), implement a stewardship process to track, monitor quality and assure compliance with easement terms.

Under the terms of the Reinvest In Minnesota (RIM) Easement Program, landowners are required to maintain compliance with the easement. A conservation plan is developed with the landowner and maintained as part of each easement. Basic easement compliance costs are borne by the landowner, periodic enhancements may be cost shared from a variety of sources.

Will new trails or roads be developed or improved as a result of the OHF acquisition - **Yes**

Describe the types of trails or roads and the allowable uses:

Though uncommon, there could be a potential for new trails to be developed, if they contribute to easement maintenance or benefit the easement site (e.g. firebreaks, berm maintenance, etc). Unauthorized trails identified during the monitoring process are in violation of the easement.

How will maintenance and monitoring be accomplished:

The easements secured under this project will be managed as part of the MN Board of Water and Soil Resources (BWSR) RIM Reserve Program that has over 6,500 easements currently in place. Easements are monitored annually for each of the first 5 years and then every 3rd year after that. BWSR, in cooperation with Soil and Water Conservation Districts (SWCD), implement a stewardship process to track, monitor quality and assure compliance with easement terms.

Under the terms of the Reinvest In Minnesota (RIM) Easement Program, landowners are required to maintain compliance with the easement. A conservation plan is developed with the landowner and maintained as part of each easement. Basic easement compliance costs are borne by the landowner, periodic enhancements may be cost shared from a variety of sources.

Will restoration and enhancement work follow best management practices including MS 84.973 Pollinator Habitat Program - **Yes**

Is the activity on permanently protected land per 97A.056, subd 13(f), tribal lands, and/or public waters per MS 103G.005, Subd. 15 - **Yes (RIM Perpetual Easements)**

**Accomplishment Timeline:**

Activity	Approximate Date Completed
Obtain applications from eligible landowners	June 30, 2018
Allocations to specific parcels	July 30, 2018
Easements recorded	June 30, 2021
Restorations completed and final report submitted	June 30, 2026

**Date of Final Report Submission:** 11/1/2026

**Federal Funding:**

Do you anticipate federal funds as a match for this program - **Yes**

Are the funds confirmed - **Yes**

[Documentation](#)

What are the types of funds?

**Cash Match** - \$21332000

**In-Kind Match** - \$

**Other** -

## Outcomes:

### Programs in forest-prairie transition region:

- Protected, restored, and enhanced aspen parklands and riparian areas *A summary of the total acres acquired through this appropriation will be reported. On-site inspections are performed every three years and compliance checks are performed in the other two years to ensure maintained outcomes. An increase of native grassland habitat availability within a certain region is expected to increase the carrying capacity of grassland-dependent wildlife within that region. This would have a positive impact on both game and nongame species. We expect more abundant populations of endangered, threatened, special concern and game species as these complexes are restored.*

### Programs in metropolitan urbanizing region:

- A network of natural land and riparian habitats will connect corridors for wildlife and species in greatest conservation need *A summary of the total acres acquired through this appropriation will be reported. On-site inspections are performed every three years and compliance checks are performed in the other two years to ensure maintained outcomes. An increase of native grassland habitat availability within a certain region is expected to increase the carrying capacity of grassland-dependent wildlife within that region. This would have a positive impact on both game and nongame species. We expect more abundant populations of endangered, threatened, special concern and game species as these complexes are restored.*

### Programs in southeast forest region:

- Rivers, streams, and surrounding vegetation provide corridors of habitat *A summary of the total acres acquired through this appropriation will be reported. On-site inspections are performed every three years and compliance checks are performed in the other two years to ensure maintained outcomes. An increase of native grassland habitat availability within a certain region is expected to increase the carrying capacity of grassland-dependent wildlife within that region. This would have a positive impact on both game and nongame species. We expect more abundant populations of endangered, threatened, special concern and game species as these complexes are restored.*

### Programs in prairie region:

- Expiring CRP lands are permanently protected *A summary of the total acres acquired through this appropriation will be reported. On-site inspections are performed every three years and compliance checks are performed in the other two years to ensure maintained outcomes. An increase of native grassland habitat availability within a certain region is expected to increase the carrying capacity of grassland-dependent wildlife within that region. This would have a positive impact on both game and nongame species. We expect more abundant populations of endangered, threatened, special concern and game species as these complexes are restored.*

# Budget Spreadsheet

Budget reallocations up to 10% do not require an amendment to the Accomplishment Plan

## How will this program accommodate the reduced appropriation recommendation from the original proposed requested amount

A reduction in funding has reduced outputs proportionally. Program management costs are the exception, due to program management & oversight remaining consistent regardless of appropriation amount.

**Total Amount of Request: \$ 5333000**

## Budget and Cash Leverage

BudgetName	LSOHC Request	Anticipated Leverage	Leverage Source	Total
Personnel	\$466,400	\$466,400	Clean Water Fund, Clean Water Fund, Clean Water Fund	\$932,800
Contracts	\$396,000	\$396,000	Clean Water Fund	\$792,000
Fee Acquisition w/ PILT	\$0	\$0		\$0
Fee Acquisition w/o PILT	\$0	\$0		\$0
Easement Acquisition	\$3,527,200	\$24,859,200	Clean Water Fund, USDA-FSA-CRP	\$28,386,400
Easement Stewardship	\$858,000	\$858,000	Clean Water Fund	\$1,716,000
Travel	\$9,400	\$9,400	Clean Water Fund	\$18,800
Professional Services	\$0	\$0		\$0
Direct Support Services	\$58,700	\$58,700	Clean Water Fund	\$117,400
DNR Land Acquisition Costs	\$0	\$0		\$0
Capital Equipment	\$0	\$0		\$0
Other Equipment/Tools	\$13,300	\$13,300	Clean Water Fund	\$26,600
Supplies/Materials	\$4,000	\$4,000	Clean Water Fund	\$8,000
DNR IDP	\$0	\$0		\$0
Total	\$5,333,000	\$26,665,000		\$31,998,000

## Personnel

Position	FTE	Over # of years	LSOHC Request	Anticipated Leverage	Leverage Source	Total
Program Management	0.25	5.00	\$68,800	\$68,800	Clean Water Fund	\$137,600
Easement Processing	3.38	3.00	\$355,400	\$355,400	Clean Water Fund	\$710,800
Engineering/Eco Services	0.28	3.00	\$42,200	\$42,200	Clean Water Fund	\$84,400
Total	3.91	11.00	\$466,400	\$466,400		\$932,800

Amount of Request: \$5,333,000

Amount of Leverage: \$26,665,000

Leverage as a percent of the Request: 500.00%

DSS + Personnel: \$525,100

As a % of the total request: 9.85%

## How did you determine which portions of the Direct Support Services of your shared support services is direct to this program:

BWSR calculates direct support services costs that are directly related to and necessary for each request based on the type of work being done.

## Does the amount in the contract line include R/E work?

No. The contract line amount will be used for payments to SWCD staff for easement implementation (includes Farm Bill Assistance Partnership). Estimated restoration costs are included in the easements acquisition line. We estimate that LSOHC Costs for restoration will amount to \$422,500.

## Describe and explain leverage source and confirmation of funds:

In December of 2015 the Governor submitted a CREP proposal to the USDA Secretary. Negotiations are nearly complete.

## Output Tables

**Table 1a. Acres by Resource Type**

Type	Wetlands	Prairies	Forest	Habitats	Total
Restore	0	0	0	0	0
Protect in Fee with State PILT Liability	0	0	0	0	0
Protect in Fee W/O State PILT Liability	0	0	0	0	0
Protect in Easement	0	2,113	0	0	2,113
Enhance	0	0	0	0	0
Total	0	2,113	0	0	2,113

**Table 1b. How many of these Prairie acres are Native Prairie?**

Type	Native Prairie
Restore	0
Protect in Fee with State PILT Liability	0
Protect in Fee W/O State PILT Liability	0
Protect in Easement	0
Enhance	0
Total	0

**Table 2. Total Funding by Resource Type**

Type	Wetlands	Prairies	Forest	Habitats	Total
Restore	\$0	\$422,500	\$0	\$0	\$422,500
Protect in Fee with State PILT Liability	\$0	\$0	\$0	\$0	\$0
Protect in Fee W/O State PILT Liability	\$0	\$0	\$0	\$0	\$0
Protect in Easement	\$0	\$4,910,500	\$0	\$0	\$4,910,500
Enhance	\$0	\$0	\$0	\$0	\$0
Total	\$0	\$5,333,000	\$0	\$0	\$5,333,000

**Table 3. Acres within each Ecological Section**

Type	Metro Urban	ForestPrairie	SE Forest	Prairie	N Forest	Total
Restore	0	0	0	0	0	0
Protect in Fee with State PILT Liability	0	0	0	0	0	0
Protect in Fee W/O State PILT Liability	0	0	0	0	0	0
Protect in Easement	211	211	211	1,480	0	2,113
Enhance	0	0	0	0	0	0
Total	211	211	211	1,480	0	2,113

**Table 4. Total Funding within each Ecological Section**

Type	Metro Urban	ForestPrairie	SE Forest	Prairie	N Forest	Total
Restore	\$52,300	\$42,300	\$42,300	\$285,600	\$0	\$422,500
Protect in Fee with State PILT Liability	\$0	\$0	\$0	\$0	\$0	\$0
Protect in Fee W/O State PILT Liability	\$0	\$0	\$0	\$0	\$0	\$0
Protect in Easement	\$491,100	\$491,100	\$491,100	\$3,437,200	\$0	\$4,910,500
Enhance	\$0	\$0	\$0	\$0	\$0	\$0
Total	\$543,400	\$533,400	\$533,400	\$3,722,800	\$0	\$5,333,000



**Table 5. Average Cost per Acre by Resource Type**

Type	Wetlands	Prairies	Forest	Habitats
Restore	\$0	\$0	\$0	\$0
Protect in Fee with State PILT Liability	\$0	\$0	\$0	\$0
Protect in Fee W/O State PILT Liability	\$0	\$0	\$0	\$0
Protect in Easement	\$0	\$2324	\$0	\$0
Enhance	\$0	\$0	\$0	\$0

**Table 6. Average Cost per Acre by Ecological Section**

Type	Metro/Urban	Forest/Prairie	SE Forest	Prairie	Northern Forest
Restore	\$0	\$0	\$0	\$0	\$0
Protect in Fee with State PILT Liability	\$0	\$0	\$0	\$0	\$0
Protect in Fee W/O State PILT Liability	\$0	\$0	\$0	\$0	\$0
Protect in Easement	\$2327	\$2327	\$2327	\$2322	\$0
Enhance	\$0	\$0	\$0	\$0	\$0

**Target Lake/Stream/River Feet or Miles**

40 miles

## Parcel List

*For restoration and enhancement programs ONLY: Managers may add, delete, and substitute projects on this parcel list based upon need, readiness, cost, opportunity, and/or urgency so long as the substitute parcel/project forwards the constitutional objectives of this program in the Project Scope table of this accomplishment plan. The final accomplishment plan report will include the final parcel list.*

### Section 1 - Restore / Enhance Parcel List

No parcels with an activity type restore or enhance.

### Section 2 - Protect Parcel List

No parcels with an activity type protect.

### Section 2a - Protect Parcel with Bldgs

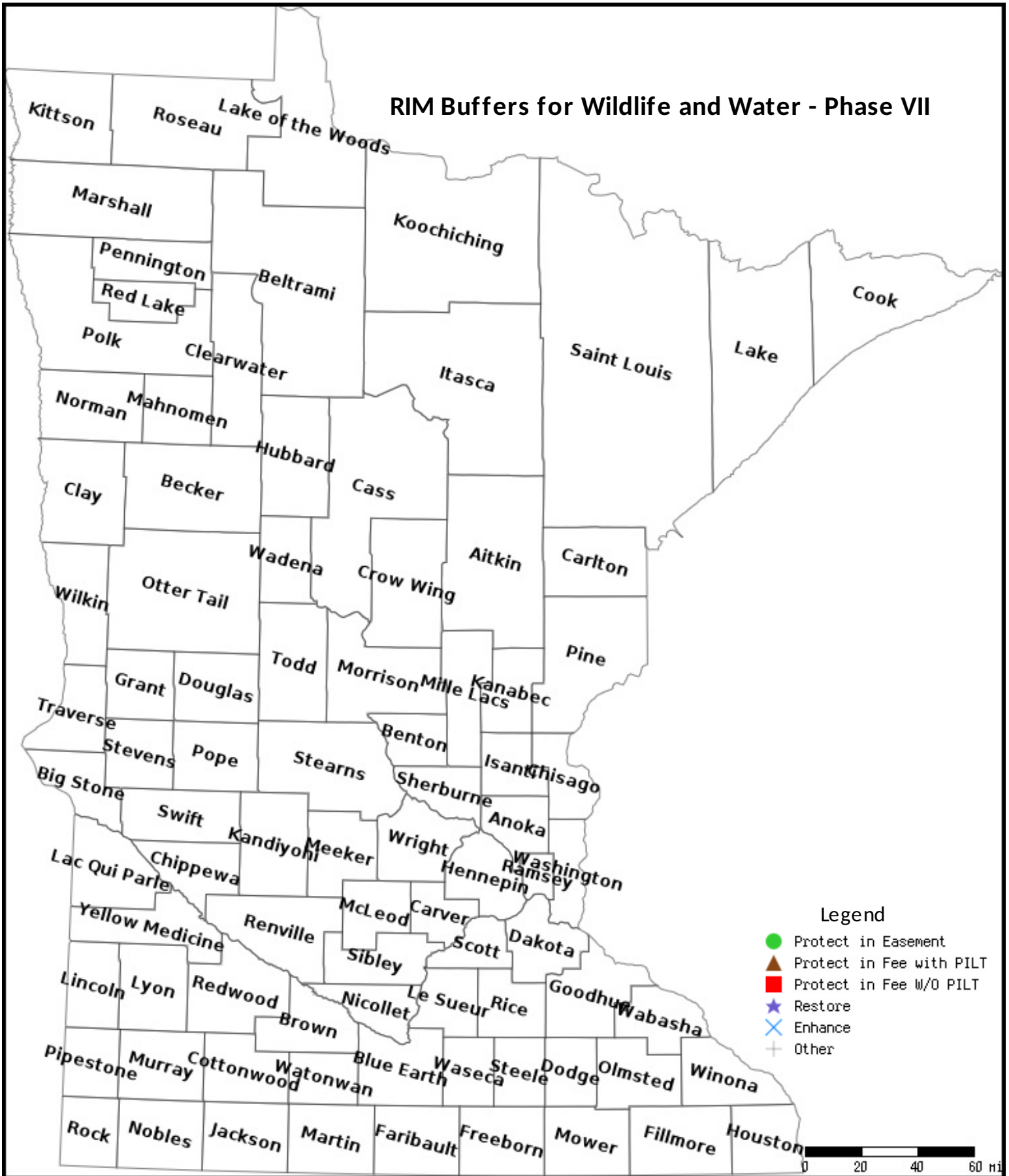
No parcels with an activity type protect and has buildings.

### Section 3 - Other Parcel Activity

No parcels with an other activity type.

# Parcel Map

## RIM Buffers for Wildlife and Water - Phase VII



Data Generated From Parcel List



# RIM Buffers for Wildlife & Water Scoring Form

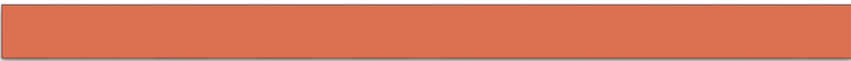
<b>Landowner/Project Name:</b>	<b>County (Field Office):</b>	<b>Prepared By:</b>	<b>Date:</b>
EXAMPLE HIGH SCORING	PROJECT		6/4/2015

**Instructions:** For each enrollment requesting a Wildlife Habitat Buffer Expansion, complete the highlighted sections of this score sheet. For question 1-7 select the response from the dropdown that best answers the question. Print and include it with your signup materials. A minimum score of 50 points is required to be eligible.

**Offer must meet these minimum criteria to be eligible:**

- Offer is within the prairie section identified on the LSOHC map.
- Offer has maximum enrollment (200 feet average).
- Offer is built upon a Clean Water Fund buffer.
- Offer scores a minimum of 50 points on the following factors.

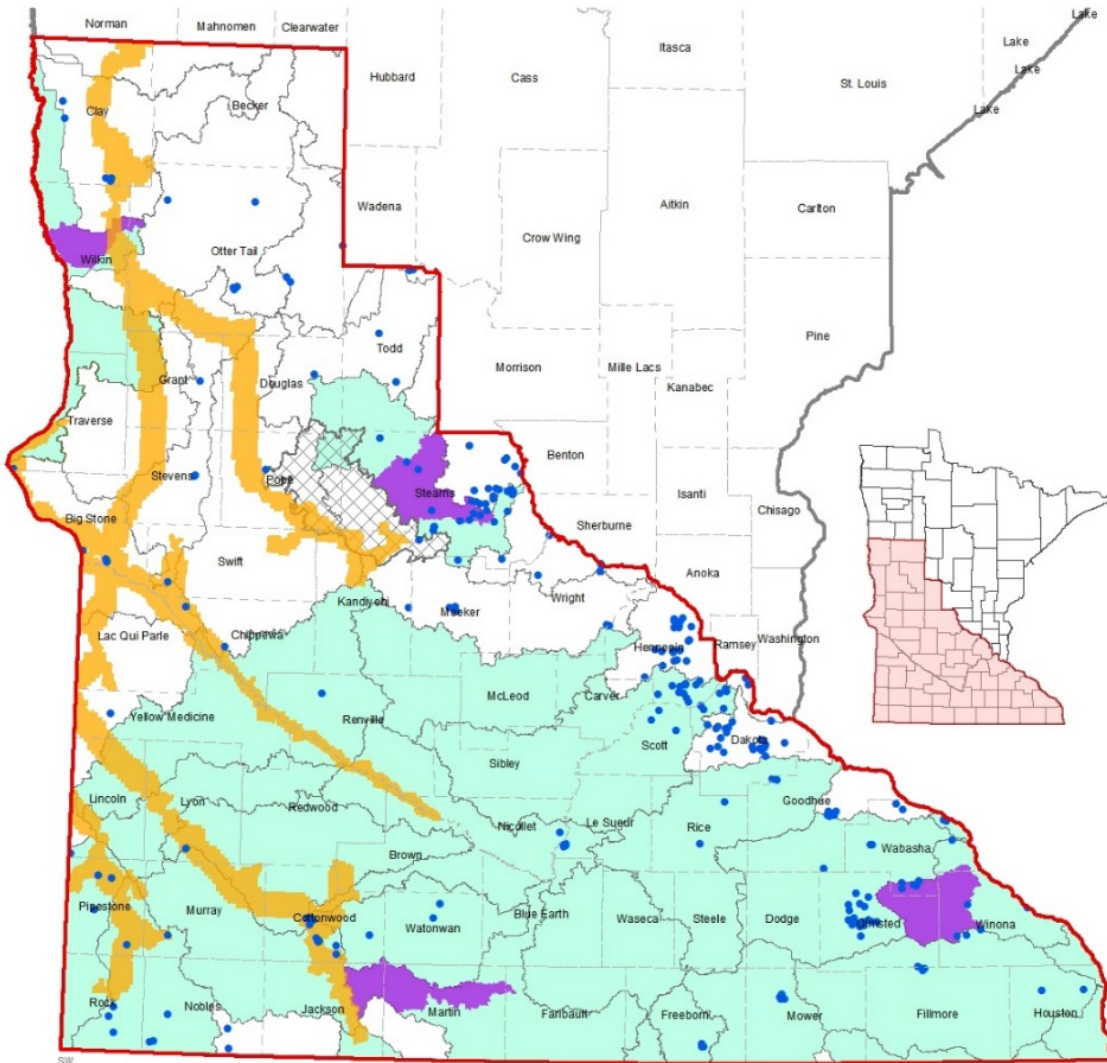
	<b>Score</b>
<b>1. Will this offer preserve an existing CRP contract?</b>	
Yes - 10 points	<b>10</b>
<b>2. Is the offer within the watershed of an identified shallow lake?</b>	
Yes - 15 points	<b>15</b>
<b>3. Proximity to an existing protected habitat complex that is larger than 160 acres?</b>	
Connects two protected habitats together - 20 points	<b>20</b>
<b>4. Proximity to public land that is open for public hunting?</b>	
Immediately adjacent - 15 points	<b>15</b>
<b>5. Type of water resource being buffered</b>	
Lake - 15 points	<b>15</b>
<b>6. Type Vegetative Diversity on proposed site?</b>	
Greater than 20 native species exist or planted - 10 points	<b>10</b>
<b>7. Combined Easement Size</b>	
Greater than 20 acres - 15 points	<b>15</b>
<b>Total Score</b>	<b>100</b>



# The Minnesota CREP



## MN CREP Proposed Project Area



2014 CREP Project Area	Prairie Corridor, MN Prairie Conservation Plan
County Boundary	MN Agricultural Water Quality Certification Pilot Watersheds
Major Watersheds	Bonanza Valley Groundwater Management Area
Nit. & Phos.: High Priority, MN Nutrient Reduction Strategy	High or Very High Vulnerability, Drinking Water Supply Mgt. Areas

# Lessard-Sams Outdoor Heritage Council Comparison Report

**Program Title:** 2017 - RIM Buffers for Wildlife and Water - Phase VII

**Organization:** BWSR

**Manager:** Tabor Hoek

## Budget

Requested Amount: \$10,000,000

Appropriated Amount: \$5,333,000

Percentage: 53.33%

Budget Item	Total Requested		Total Appropriated		Percentage of Request	
	LSOHC Request	Anticipated Leverage	Appropriated Amount	Anticipated Leverage	Percentage of Request	Percentage of Leverage
Personnel	\$764,700	\$764,700	\$466,400	\$466,400	60.99%	60.99%
Contracts	\$622,500	\$622,500	\$396,000	\$396,000	63.61%	63.61%
Fee Acquisition w/ PILT	\$0	\$0	\$0	\$0	-	-
Fee Acquisition w/o PILT	\$0	\$0	\$0	\$0	-	-
Easement Acquisition	\$6,834,300	\$46,834,300	\$3,527,200	\$24,859,200	51.61%	53.08%
Easement Stewardship	\$1,618,500	\$1,618,500	\$858,000	\$858,000	53.01%	53.01%
Travel	\$17,500	\$17,500	\$9,400	\$9,400	53.71%	53.71%
Professional Services	\$0	\$0	\$0	\$0	-	-
Direct Support Services	\$110,000	\$110,000	\$58,700	\$58,700	53.36%	53.36%
DNR Land Acquisition Costs	\$0	\$0	\$0	\$0	-	-
Capital Equipment	\$0	\$0	\$0	\$0	-	-
Other Equipment/Tools	\$25,000	\$25,000	\$13,300	\$13,300	53.20%	53.20%
Supplies/Materials	\$7,500	\$7,500	\$4,000	\$4,000	53.33%	53.33%
DNR IDP	\$0	\$0	\$0	\$0	-	-
<b>Total</b>	<b>\$10,000,000</b>	<b>\$50,000,000</b>	<b>\$5,333,000</b>	<b>\$26,665,000</b>	<b>53.33%</b>	<b>53.33%</b>

## How will this program accommodate the reduced appropriation recommendation from the original proposed requested amount?

A reduction in funding has reduced outputs proportionally. Program management costs are the exception, due to program management & oversight remaining consistent regardless of appropriation amount.

# Output

**Table 1a. Acres by Resource Type**

Type	Total Proposed	Total in AP	Percentage of Proposed
Restore	0	0	-
Protect in Fee with State PILT Liability	0	0	-
Protect in Fee W/O State PILT Liability	0	0	-
Protect in Easement	3,985	2,113	53.02%
Enhance	0	0	-

**Table 2. Total Funding by Resource Type**

Type	Total Proposed	Total in AP	Percentage of Proposed
Restore	0	422,500	-
Protect in Fee with State PILT Liability	0	0	-
Protect in Fee W/O State PILT Liability	0	0	-
Protect in Easement	10,000,000	4,910,500	49.11%
Enhance	0	0	-

**Table 3. Acres within each Ecological Section**

Type	Total Proposed	Total in AP	Percentage of Proposed
Restore	0	0	-
Protect in Fee with State PILT Liability	0	0	-
Protect in Fee W/O State PILT Liability	0	0	-
Protect in Easement	3,985	2,113	53.02%
Enhance	0	0	-

**Table 4. Total Funding within each Ecological Section**

Type	Total Proposed	Total in AP	Percentage of Proposed
Restore	0	422,500	-
Protect in Fee with State PILT Liability	0	0	-
Protect in Fee W/O State PILT Liability	0	0	-
Protect in Easement	10,000,000	4,910,500	49.11%
Enhance	0	0	-