

# Lessard-Sams Outdoor Heritage Council

## Laws of Minnesota 2017 Accomplishment Plan



**Date:** October 17, 2016

**Program or Project Title:** Southeast Minnesota Protection and Restoration - Phase V

**Funds Recommended:** \$ 2,375,000

**Manager's Name:** Richard Biske  
**Title:** Freshwater Program Director  
**Organization:** The Nature Conservancy  
**Address:** 1101 West River Parkway  
**Address 2:** Suite 200  
**City:** Minneapolis, MN 55415  
**Office Number:** 612-331-0766  
**Mobile Number:** 651-564-0591  
**Email:** rbiske@tnc.org  
**Website:** nature.org

**Legislative Citation:** ML 2017, Ch. X, Art. X, Sec. X

**Appropriation Language:**

**County Locations:** Fillmore, Goodhue, Houston, Wabasha, and Winona.

**Regions in which work will take place:**

- Southeast Forest

**Activity types:**

- Enhance
- Protect in Easement
- Protect in Fee
- Restore

**Priority resources addressed by activity:**

- Forest
- Habitat
- Prairie

### Abstract:

This project will protect approximately 680 acres and restore and enhance approximately 70 acres of declining habitat for species of greatest conservation need in strategically targeted areas of biodiversity significance in the Blufflands resulting in increased public access and habitat.

### Design and scope of work:

Investment in habitat protection and restoration in the Blufflands with use of Outdoor Heritage Funds in partnership with The Nature Conservancy (TNC), Minnesota Land Trust (MLT) and The Trust for Public Land (TPL) would expand and connect larger contiguous blocks of protected lands, allowing land managers to restore and maintain native habitats at a scale difficult to accomplish with a fragmented ownership. Benefits of this program include the increased effectiveness of frequent prescribed fire necessary to reclaim "goat prairies", oak savanna and regenerate oak hardwood forests at a larger scale. This proposal will enhance prior conservation investments and ensure that the legacy of the Blufflands is preserved for future generations.

Within the program area there are 86 different native plant community types mapped by the Minnesota Biological Survey (MBS), covering nearly 149,670 acres. There are 183 species of state listed rare plants and animals, many of which are concentrated on 749 sites of biodiversity significance. Despite this high demand for outdoor recreation only 5% of the region is open to the public. Since 2008, approximately 7% of the grasslands in the focus area of this program have been converted to cropland threatening the coldwater trout streams that make the region unique.

#### Fee Acquisition:

The Nature Conservancy and The Trust for Public Land will coordinate with MN DNR on all potential fee-title acquisitions. TNC and TPL will assist the participating DNR Divisions by conducting all or some of the following activities: initial site reviews, negotiations with sellers, appraisals, environmental reviews and acquisition of fee title. TNC and TPL will transfer lands to the DNR except when TNC ownership is appropriate. Fee Acquisition of approximately 214 acres of forest and 66 acres of prairie along 1/2 mile of coldwater trout streams.

#### Conservation Easements:

Minnesota Land Trust will acquire approximately 360 acres of conservation easements and develop restoration and management plans for eased acres. MLT will use a competitive bidding and ranking system to prioritize the best projects and secure them at the lowest cost to the State.

#### Restoration and Enhancement:

Ecological restoration enhancement management plans will be developed in coordination with DNR Forestry, Fisheries and Wildlife and Ecological and Water Resources.

Enhancement and/or restoration of approximately 70 acres of bluff prairie and/or forest.

The Nature Conservancy (the Conservancy) may be reimbursed for salary and fringe benefits based on a provisional fringe benefits rate consistent with federal regulations and negotiated annually with the Conservancy's cognizant agency. Within 180 days of the end of each Nature Conservancy fiscal year, the Conservancy will provide MN DNR with the actual fringe benefits rate for the prior year and reconcile any overpayment made by the State. This approach is consistent with ML 2016, Ch. 172, Art. 1, Sec. 2, Subd. 8 (Payment Conditions and Capital Equipment Expenditures).

### **How does the request address MN habitats that have: historical value to fish and wildlife, wildlife species of greatest conservation need, MN County Biological Survey data, and/or rare, threatened and endangered species inventories:**

Of the completed projects 70% of the acres are within an identified Wildlife Action Network corridor and over half the the acres protected are medium or high priority. Acquisition projects have protected habitat necessary for 39 documented occurrences of Species of Greatest Conservation Need. Projects in this proposal will continue to support SGCN and targeted species by working within complexes identified by the Minnesota Biological Survey and include a mix of mesic hardwood forests, large fire dependent communities including oak/hickory woodlands, oak forests, savannas with bluff and ridgetop prairie. These complexes and the coldwaters streams they support are habitat for a variety of species of greatest conservation need, including the state threatened timber rattlesnake, other snakes and songbirds. One recent project protected 10% of the watershed home to heritage brook trout, a rare native strain of native trout nearly extirpated from the state.

### **Describe the science based planning and evaluation model used:**

The program prioritizes protection, restoration and enhancement projects within Conservation Opportunity Areas identified by a diverse group of local resource managers. Conservation Opportunity Areas were identified based on the most viable large units identified by the Minnesota Biological Survey containing existing conservation lands that can be expanded and connected to other complexes while also protecting and improving stream habitat. We continue to procure protection projects within the highest priority complexes that are within the Wildlife Action Network and improve habitat conditions within these priority areas at a large functioning scale not possible with individual projects.

### **Which sections of the Minnesota Statewide Conservation and Preservation Plan are applicable to this program:**

- H3 Improve connectivity and access to recreation
- LU8 Protect large blocks of forest land

### **Which other plans are addressed in this program:**

- Outdoor Heritage Fund: A 25 Year Framework

- Tomorrow's Habitat for the Wild and Rare

## Which LSOHC section priorities are addressed in this program:

### Southeast Forest:

- Protect forest habitat through acquisition in fee or easement to prevent parcelization and fragmentation and to provide the ability to access and manage landlocked public properties

## Relationship to other funds:

- Not Listed

## Describe the relationship of the funds:

Not Listed

## How does this program include leverage in funds or other effort to supplement any OHF appropriation:

We plan to leverage US Fish and Wildlife Service State Wildlife Grant funds to perform oak savanna and prairie restoration on lands within the same priority complexes of this program.

Each partner is leveraging 50% of direct support services expenses.

The Trust for Public Land is leveraging personnel costs.

MLT - The Land Trust encourages landowners to fully or partially donate the value of conservation easements as part of its landowner bid protocol. The leverage portion of the easement acquisition line item is a conservative estimate of value we expect to see donated to the Land Trust.

## Describe the source and amount of non-OHF money spent for this work in the past:

Appropriation Year	Source	Amount
2013	Private The Nature Conservancy	\$50,112
2014	Private The Nature Conservancy	\$2,125,000
2015	Private The Nature Conservancy	\$3,282

## How will you sustain and/or maintain this work after the Outdoor Heritage Funds are expended:

Acquisition projects will be adjacent or within close proximity to existing protected lands, including state-owned lands and lands under conservation easement. This will allow for the expansion of maintenance and restoration activities that are currently taking place on those protected lands and adjacent private lands. Habitats cleared of invasive species will be maintained with prescribed fire.

Protection and restoration projects will improve future prescribed fire and maintenance activities through economies of scale. The tracts protected and enhanced as part of this proposal also meet the prioritization for the State Wildlife Action Plan and the MN DNR has been successful in securing federal habitat enhancement funding for Southeast Minnesota. Each project is within a Conservation Opportunity Area that receives a higher level of coordination and resource priority by many partners for maintaining and enhancing protected habitats. Tracts acquired will be transferred to the state for ongoing management.

MLT - The land protected through conservation easements will be sustained through the state-of-the-art easement stewardship standards and practices. MLT is a nationally-accredited and insured land trust with a successful easement stewardship program that includes annual property monitoring and defending the easements as necessary.

## Explain the things you will do in the future to maintain project outcomes:

Year	Source of Funds	Step 1	Step 2	Step 3
Every 4 to 6 years	US Fish and Wildlife Service	Prescribed Fire		
Every 4 to 6 years	DNR Game and Fish Fund	Prescribed Fire		
2020 and perpetually	MLT Easement Stewardship and Enforcement Fund	Annual Monitoring in perpetuity		

## Activity Details:

If funded, this program will meet all applicable criteria set forth in MS 97A.056 - **Yes**

Will there be planting of corn or any crop on OHF land purchased or restored in this program - **Yes**

Explain

Short-term use of agricultural crops is an accepted best practice for preparing a site for prairie restoration. For example, short-term use of soybeans could be used for restorations in order to control weed seedbeds prior to prairie planting. In some cases this necessitates the use of GMO treated products to facilitate herbicide use in order to control weeds present in the seedbank. MLT - The purpose of the Minnesota Land Trust's conservation easements is to protect existing high quality natural habitat and to preserve opportunities for future restoration. As such, we restrict any agricultural lands and use on the properties. In cases in which there are agricultural lands associated with the larger property, we will either carve the agricultural area out of the conservation easement, or in some limited cases, we may include a small percentage of agricultural lands if it is not feasible to carve those areas out. In such cases, however, we will not use OHF funds to pay the landowners for that portion of the conservation easement.

Are any of the crop types planted GMO treated - **Yes**

Will local government approval be sought prior to acquisition - **No**

Local governments will be informed of the project and project managers made available for questions.

Is the land you plan to acquire free of any other permanent protection - **No**

Some potential projects include DNR held trout stream easements.

Is this land currently open for hunting and fishing - **No**

Will the land be open for hunting and fishing after completion - **Yes**

NA

Who will eventually own the fee title land?

MN DNR except when TNC decides to retain ownership.

Will the eased land be open for public use - **No**

Is the land you plan to acquire free of any other permanent protection - **Yes**

Who will manage the easement?

Landowner under management plan

Who will be the easement holder?

Minnesota Land Trust

Are there currently trails or roads on any of the acquisitions on the parcel list - **No**

Will new trails or roads be developed or improved as a result of the OHF acquisition - **No**

Will restoration and enhancement work follow best management practices including MS 84.973 Pollinator Habitat Program - **Yes**

Is the activity on permanently protected land per 97A.056, subd 13(f), tribal lands, and/or public waters per MS 103G.005, Subd. 15 - **Yes**  
(WMA, SNA, AMA, Private Land, County/Municipal, State Forests)

### Accomplishment Timeline:

Activity	Approximate Date Completed
Purchase agreements or options for acquisition of fee land	June 30, 2020
Purchase agreements or options on conservation easements	June 30, 2020
Floodplain and stream corridor restoration/enhancement	October 15, 2022
Bluff prairie and oak savanna restoration/enhancement on newly acquired tracts	June 30, 2022

Date of Final Report Submission: 11/1/2022

## Federal Funding:

Do you anticipate federal funds as a match for this program - **Yes**

Are the funds confirmed - **No**

What is the approximate date you anticipate receiving confirmation of the federal funds - **October 2018**

## Outcomes:

### Programs in southeast forest region:

- Large corridors and complexes of biologically diverse wildlife habitat typical of the unglaciated region are restored and protected. We will track the acres of priority parcels protected within the Conservation Opportunity Areas identified in regional planning. Success within each Conservation Opportunity Area will be determined based on the percentage of area protected restored and/or enhanced.

# Budget Spreadsheet

*Budget reallocations up to 10% do not require an amendment to the Accomplishment Plan*

**How will this program accommodate the reduced appropriation recommendation from the original proposed requested amount**

Reduced acreage of fee acquisition, conservation easement and restoration and enhancement. No restoration and enhancement on easement lands due to reduced appropriation.

**Total Amount of Request: \$ 2375000**

## Budget and Cash Leverage

BudgetName	LSOHC Request	Anticipated Leverage	Leverage Source	Total
Personnel	\$210,000	\$24,000	Private	\$234,000
Contracts	\$234,000	\$0		\$234,000
Fee Acquisition w/ PILT	\$1,123,500	\$0		\$1,123,500
Fee Acquisition w/o PILT	\$0	\$0		\$0
Easement Acquisition	\$418,100	\$150,000	Private	\$568,100
Easement Stewardship	\$80,000	\$0		\$80,000
Travel	\$11,000	\$0		\$11,000
Professional Services	\$164,500	\$0		\$164,500
Direct Support Services	\$73,900	\$73,900	Private, Private, Private	\$147,800
DNR Land Acquisition Costs	\$20,000	\$0		\$20,000
Capital Equipment	\$0	\$0		\$0
Other Equipment/Tools	\$0	\$0		\$0
Supplies/Materials	\$10,000	\$0		\$10,000
DNR IDP	\$30,000	\$0		\$30,000
Total	\$2,375,000	\$247,900		\$2,622,900

## Personnel

Position	FTE	Over # of years	LSOHC Request	Anticipated Leverage	Leverage Source	Total
TPL - Protection and Legal Staff	0.15	3.00	\$50,000	\$24,000	Private	\$74,000
TNC Grant Administration	0.05	3.00	\$13,000	\$0		\$13,000
TNC Project Manager	0.20	3.00	\$52,000	\$0		\$52,000
TNC Protection Staff	0.08	3.00	\$20,000	\$0		\$20,000
MLT - Conservation and Legal Staff	0.28	3.00	\$75,000	\$0		\$75,000
Total	0.76	15.00	\$210,000	\$24,000		\$234,000

## Budget and Cash Leverage by Partnership

BudgetName	Partnership	LSOHC Request	Anticipated Leverage	Leverage Source	Total
Personnel	Trust for Public Land	\$50,000	\$24,000	Private	\$74,000
Contracts	Trust for Public Land	\$0	\$0		\$0
Fee Acquisition w/ PILT	Trust for Public Land	\$538,400	\$0		\$538,400
Fee Acquisition w/o PILT	Trust for Public Land	\$0	\$0		\$0
Easement Acquisition	Trust for Public Land	\$0	\$0		\$0
Easement Stewardship	Trust for Public Land	\$0	\$0		\$0
Travel	Trust for Public Land	\$1,000	\$0		\$1,000
Professional Services	Trust for Public Land	\$40,000	\$0		\$40,000
Direct Support Services	Trust for Public Land	\$15,600	\$15,600	Private	\$31,200
DNR Land Acquisition Costs	Trust for Public Land	\$10,000	\$0		\$10,000
Capital Equipment	Trust for Public Land	\$0	\$0		\$0
Other Equipment/Tools	Trust for Public Land	\$0	\$0		\$0
Supplies/Materials	Trust for Public Land	\$0	\$0		\$0
DNR IDP	Trust for Public Land	\$20,000	\$0		\$20,000
Total		\$675,000	\$39,600		\$714,600

### Personnel - Trust for Public Land

Position	FTE	Over # of years	LSOHC Request	Anticipated Leverage	Leverage Source	Total
TPL - Protection and Legal Staff	0.15	3.00	\$50,000	\$24,000	Private	\$74,000
Total	0.15	3.00	\$50,000	\$24,000		\$74,000

Budget Name	Partnership	LSOHC Request	Anticipated Leverage	Leverage Source	Total
Personnel	The Nature Conservancy	\$85,000	\$0		\$85,000
Contracts	The Nature Conservancy	\$200,000	\$0		\$200,000
Fee Acquisition w/ PILT	The Nature Conservancy	\$585,100	\$0		\$585,100
Fee Acquisition w/o PILT	The Nature Conservancy	\$0	\$0		\$0
Easement Acquisition	The Nature Conservancy	\$0	\$0		\$0
Easement Stewardship	The Nature Conservancy	\$0	\$0		\$0
Travel	The Nature Conservancy	\$5,000	\$0		\$5,000
Professional Services	The Nature Conservancy	\$55,000	\$0		\$55,000
Direct Support Services	The Nature Conservancy	\$39,900	\$39,900	Private	\$79,800
DNR Land Acquisition Costs	The Nature Conservancy	\$10,000	\$0		\$10,000
Capital Equipment	The Nature Conservancy	\$0	\$0		\$0
Other Equipment/Tools	The Nature Conservancy	\$0	\$0		\$0
Supplies/Materials	The Nature Conservancy	\$10,000	\$0		\$10,000
DNR IDP	The Nature Conservancy	\$10,000	\$0		\$10,000
Total		\$1,000,000	\$39,900		\$1,039,900

### Personnel - The Nature Conservancy

Position	FTE	Over # of years	LSOHC Request	Anticipated Leverage	Leverage Source	Total
TNC Grant Administration	0.05	3.00	\$13,000	\$0		\$13,000
TNC Project Manager	0.20	3.00	\$52,000	\$0		\$52,000
TNC Protection Staff	0.08	3.00	\$20,000	\$0		\$20,000
Total	0.33	9.00	\$85,000	\$0		\$85,000

Budget Name	Partnership	LSOHC Request	Anticipated Leverage	Leverage Source	Total
Personnel	Minnesota Land Trust	\$75,000	\$0		\$75,000
Contracts	Minnesota Land Trust	\$34,000	\$0		\$34,000
Fee Acquisition w/ PILT	Minnesota Land Trust	\$0	\$0		\$0
Fee Acquisition w/o PILT	Minnesota Land Trust	\$0	\$0		\$0
Easement Acquisition	Minnesota Land Trust	\$418,100	\$150,000	Private	\$568,100
Easement Stewardship	Minnesota Land Trust	\$80,000	\$0		\$80,000
Travel	Minnesota Land Trust	\$5,000	\$0		\$5,000
Professional Services	Minnesota Land Trust	\$69,500	\$0		\$69,500
Direct Support Services	Minnesota Land Trust	\$18,400	\$18,400	Private	\$36,800
DNR Land Acquisition Costs	Minnesota Land Trust	\$0	\$0		\$0
Capital Equipment	Minnesota Land Trust	\$0	\$0		\$0
Other Equipment/Tools	Minnesota Land Trust	\$0	\$0		\$0
Supplies/Materials	Minnesota Land Trust	\$0	\$0		\$0
DNR IDP	Minnesota Land Trust	\$0	\$0		\$0
Total		\$700,000	\$168,400		\$868,400

### Personnel - Minnesota Land Trust

Position	FTE	Over # of years	LSOHC Request	Anticipated Leverage	Leverage Source	Total
MLT - Conservation and Legal Staff	0.28	3.00	\$75,000	\$0		\$75,000
Total	0.28	3.00	\$75,000	\$0		\$75,000

Amount of Request: \$2,375,000

Amount of Leverage: \$247,900

Leverage as a percent of the Request: 10.44%

DSS + Personnel: \$283,900

As a % of the total request: 11.95%

**How did you determine which portions of the Direct Support Services of your shared support services is direct to this program:**

TNC: DSS is based on The Nature Conservancy's Federally Negotiated rate as proposed and subsequently approved by the US Dept. of Interior. The proportion requested from the grant represents 50% with the other 50% contributed as leverage.

MLT: The Minnesota Land Trust has budgeted direct support expenses line with its current application for a federal indirect expense rate; we will seek reimbursement for half of allowed expenses, with the other 50% shown as leverage.

TPL: The Trust for Public Land's DSS request is based upon our federally approved indirect rate, which has been approved by the DNR. 50% of these costs are requested from the grant, 50% is contributed as leverage.

**Does the amount in the contract line include R/E work?**

Contracts for restoration and/or enhancement.

**Describe and explain leverage source and confirmation of funds:**

Private funds.



## Output Tables

**Table 1a. Acres by Resource Type**

Type	Wetlands	Prairies	Forest	Habitats	Total
Restore	0	0	0	0	0
Protect in Fee with State PILT Liability	0	214	66	0	280
Protect in Fee W/O State PILT Liability	0	0	0	0	0
Protect in Easement	0	60	300	0	360
Enhance	0	70	0	0	70
Total	0	344	366	0	710

**Table 1b. How many of these Prairie acres are Native Prairie?**

Type	Native Prairie
Restore	0
Protect in Fee with State PILT Liability	0
Protect in Fee W/O State PILT Liability	0
Protect in Easement	0
Enhance	20
Total	20

**Table 2. Total Funding by Resource Type**

Type	Wetlands	Prairies	Forest	Habitats	Total
Restore	\$0	\$30,000	\$30,000	\$0	\$60,000
Protect in Fee with State PILT Liability	\$0	\$912,500	\$512,500	\$0	\$1,425,000
Protect in Fee W/O State PILT Liability	\$0	\$0	\$0	\$0	\$0
Protect in Easement	\$0	\$175,000	\$525,000	\$0	\$700,000
Enhance	\$0	\$190,000	\$0	\$0	\$190,000
Total	\$0	\$1,307,500	\$1,067,500	\$0	\$2,375,000

**Table 3. Acres within each Ecological Section**

Type	Metro Urban	ForestPrairie	SE Forest	Prairie	N Forest	Total
Restore	0	0	0	0	0	0
Protect in Fee with State PILT Liability	0	0	280	0	0	280
Protect in Fee W/O State PILT Liability	0	0	0	0	0	0
Protect in Easement	0	0	360	0	0	360
Enhance	0	0	70	0	0	70
Total	0	0	710	0	0	710

**Table 4. Total Funding within each Ecological Section**

Type	Metro Urban	ForestPrairie	SE Forest	Prairie	N Forest	Total
Restore	\$0	\$0	\$60,000	\$0	\$0	\$60,000
Protect in Fee with State PILT Liability	\$0	\$0	\$1,425,000	\$0	\$0	\$1,425,000
Protect in Fee W/O State PILT Liability	\$0	\$0	\$0	\$0	\$0	\$0
Protect in Easement	\$0	\$0	\$700,000	\$0	\$0	\$700,000
Enhance	\$0	\$0	\$190,000	\$0	\$0	\$190,000
Total	\$0	\$0	\$2,375,000	\$0	\$0	\$2,375,000

**Table 5. Average Cost per Acre by Resource Type**

Type	Wetlands	Prairies	Forest	Habitats
Restore	\$0	\$0	\$0	\$0
Protect in Fee with State PILT Liability	\$0	\$4264	\$7765	\$0
Protect in Fee W/O State PILT Liability	\$0	\$0	\$0	\$0
Protect in Easement	\$0	\$2917	\$1750	\$0
Enhance	\$0	\$2714	\$0	\$0

**Table 6. Average Cost per Acre by Ecological Section**

Type	Metro/Urban	Forest/Prairie	SE Forest	Prairie	Northern Forest
Restore	\$0	\$0	\$0	\$0	\$0
Protect in Fee with State PILT Liability	\$0	\$0	\$5089	\$0	\$0
Protect in Fee W/O State PILT Liability	\$0	\$0	\$0	\$0	\$0
Protect in Easement	\$0	\$0	\$1944	\$0	\$0
Enhance	\$0	\$0	\$2714	\$0	\$0

**Target Lake/Stream/River Feet or Miles**

1.5 miles

## Parcel List

For restoration and enhancement programs ONLY: Managers may add, delete, and substitute projects on this parcel list based upon need, readiness, cost, opportunity, and/or urgency so long as the substitute parcel/project forwards the constitutional objectives of this program in the Project Scope table of this accomplishment plan. The final accomplishment plan report will include the final parcel list.

### Section 1 - Restore / Enhance Parcel List

Fillmore

Name	TRDS	Acres	Est Cost	Existing Protection?
Choice 1	10208211	26	\$375,000	Yes

### Section 2 - Protect Parcel List

Fillmore

Name	TRDS	Acres	Est Cost	Existing Protection?	Hunting?	Fishing?
7 Springs	10212217	120	\$585,000	No	Full	Full
Choice 2	11208212	40	\$160,000	No	Full	Full
Choice 3	10307231	379	\$1,800,000	No	Full	Full

Goodhue

Name	TRDS	Acres	Est Cost	Existing Protection?	Hunting?	Fishing?
Red Wing (Ghie)	11315229	70	\$0	No	No	No

Houston

Name	TRDS	Acres	Est Cost	Existing Protection?	Hunting?	Fishing?
Crooked Creek (Novotny)	10204221	250	\$280,000	No	No	No
Wet Bark	10204221	260	\$980,000	No	Full	Full
Yucatan	10307224	160	\$670,000	No	Full	Full
Yucatan 2	10307231	130	\$500,000	No	Full	Full

Wabasha

Name	TRDS	Acres	Est Cost	Existing Protection?	Hunting?	Fishing?
East Snake Creek (Gates)	10910226	204	\$260,000	No	No	No
Lower Zumbro	11010218	120	\$742,000	No	Full	Full

Winona

Name	TRDS	Acres	Est Cost	Existing Protection?	Hunting?	Fishing?
Homers Ridge (Bach)	10607203	200	\$0	No	No	No
Whitewater	10710206	90	\$500,000	No	Full	Full
Whitewater	10710208	0	\$425,000	No	Full	full
Wiscoy Valley (Mueller 2)	10507233	223	\$312,200	No	No	No

### Section 2a - Protect Parcel with Bldgs

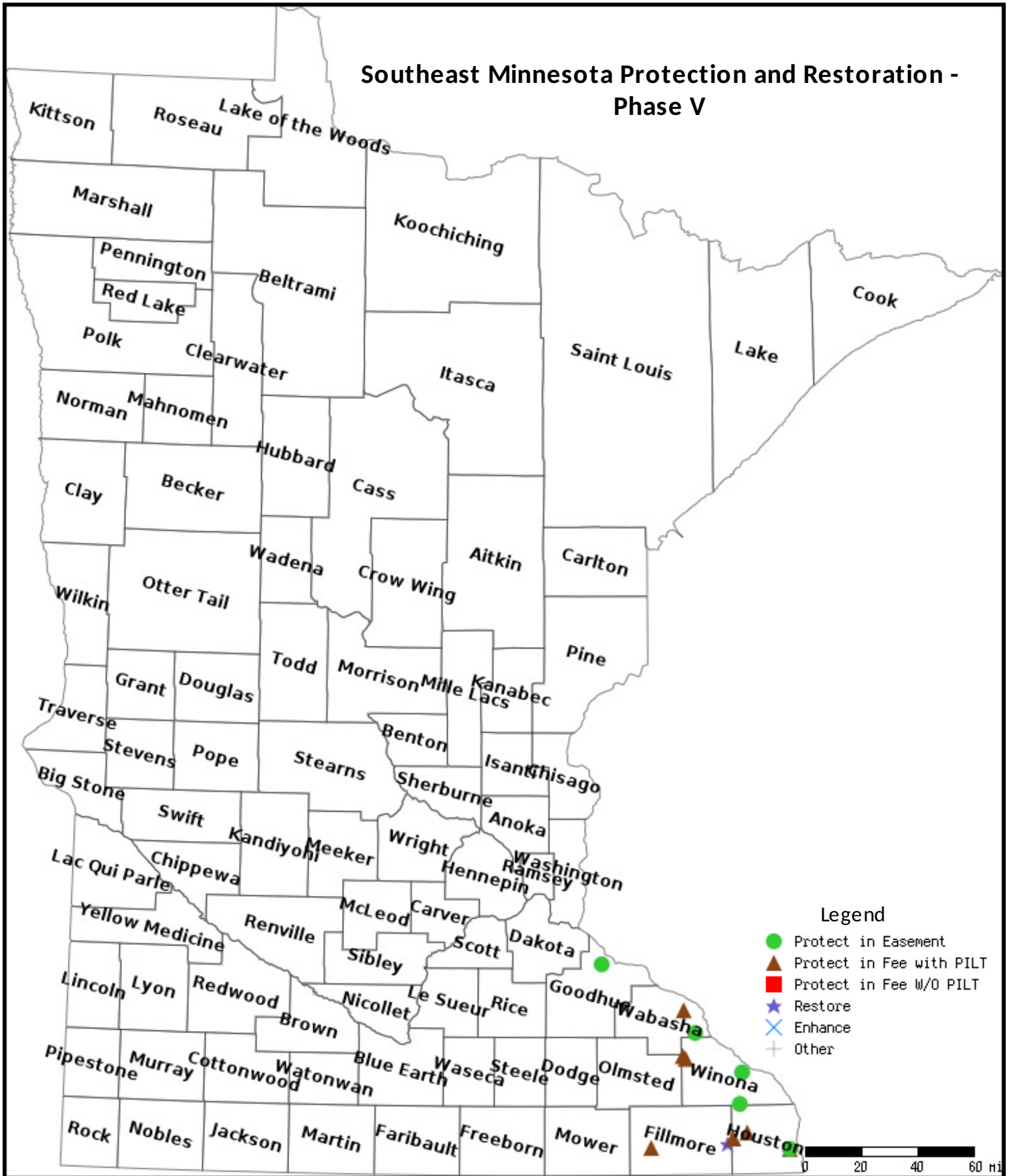
No parcels with an activity type protect and has buildings.

### Section 3 - Other Parcel Activity

No parcels with an other activity type.

# Parcel Map

## Southeast Minnesota Protection and Restoration - Phase V



Data Generated From Parcel List

## Southeast Minnesota Protection and Restoration

Parcels are reviewed by both a Division of MN DNR and Conservancy to ensure that they meet the priorities of both partners.

Criteria for identification of key conservation parcels.

State-owned properties represent significant blocks of ownership in Conservation Opportunity Areas (COA) in Southeast Minnesota as identified by Landscape Stewardship Plans and present opportunities for targeted stewardship. Where landscape stewardship plans and identified Conservation Opportunity Areas do not exist, core areas are identified by the Areas of Significant Native Biodiversity Significance. State-owned lands containing mapped native plant communities were selected as a starting point. Additional management acreage and contiguous land cover were increased by selecting adjoining parcels of private land that met certain criteria. This initial private parcel selection was made using the following criteria, with each parcel satisfying all points (Figure 1):

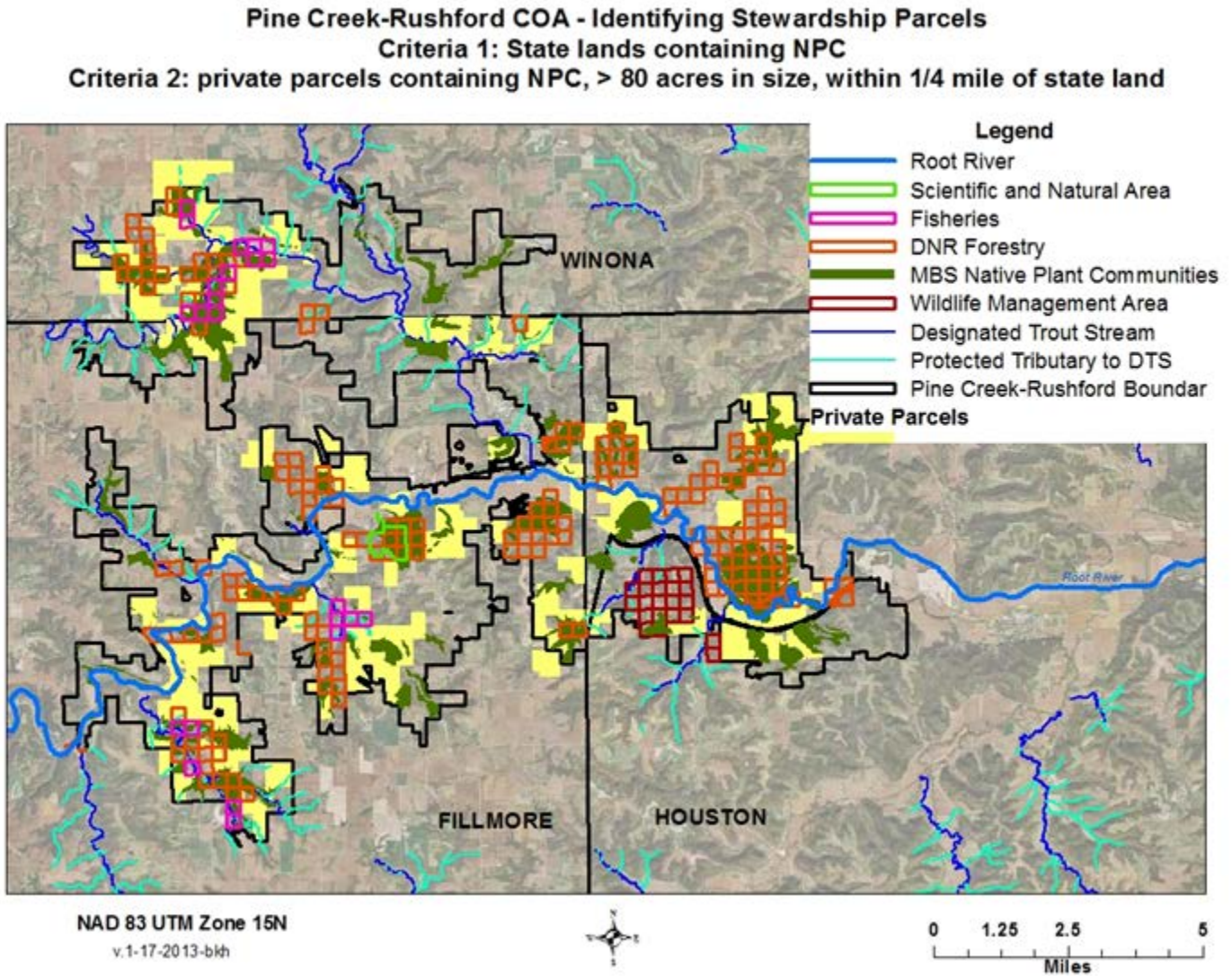
- Parcel is within Conservation Opportunity Area or Area of Significant Native Biodiversity (allows for large landscape management and management efficiencies, i.e. large scale Rx fire)
- Parcel contains an Minnesota Biological Survey mapped native plant community
- Parcel was equal to or greater than 80 acres in size
- Parcel property line began within ¼ mile of a state-owned parcel
- A Conservation Partner is willing to accept the property/meets partner objectives (SNA, WMA, Forestry)
- Willing seller

Some land parcels were selected for stewardship activities, while others were chosen for potential acquisition or conservation easement purchase.

Where multiple units of conservation lands exist within a COA , habitat corridors may need to be established to support the larger landscape and identified core areas. Parcels within an identified corridor should meet the following criteria:

- Between 2 conservation land units
- Within ½ mile of existing conservation land unit
- Contain more than 50% habitat

Figure 1. Example of parcels identified for stewardship activities in Pine Creek/Rushford Conservation Opportunity Area. The selected private parcels meet criteria and are considered for acquisition, easement, or management.



# Lessard-Sams Outdoor Heritage Council Comparison Report

**Program Title:** 2017 - Southeast Minnesota Protection and Restoration - Phase V

**Organization:** The Nature Conservancy

**Manager:** Richard Biske

## Budget

Requested Amount: \$8,699,700

Appropriated Amount: \$2,375,000

Percentage: 27.30%

Budget Item	Total Requested		Total Appropriated		Percentage of Request	
	LSOHC Request	Anticipated Leverage	Appropriated Amount	Anticipated Leverage	Percentage of Request	Percentage of Leverage
Personnel	\$613,500	\$44,100	\$210,000	\$24,000	34.23%	54.42%
Contracts	\$1,000,500	\$0	\$234,000	\$0	23.39%	-
Fee Acquisition w/ PILT	\$4,693,600	\$0	\$1,123,500	\$0	23.94%	-
Fee Acquisition w/o PILT	\$0	\$0	\$0	\$0	-	-
Easement Acquisition	\$1,200,000	\$400,000	\$418,100	\$150,000	34.84%	37.50%
Easement Stewardship	\$240,000	\$0	\$80,000	\$0	33.33%	-
Travel	\$34,500	\$0	\$11,000	\$0	31.88%	-
Professional Services	\$483,000	\$0	\$164,500	\$0	34.06%	-
Direct Support Services	\$253,600	\$253,600	\$73,900	\$73,900	29.14%	29.14%
DNR Land Acquisition Costs	\$50,000	\$0	\$20,000	\$0	40.00%	-
Capital Equipment	\$0	\$0	\$0	\$0	-	-
Other Equipment/Tools	\$0	\$0	\$0	\$0	-	-
Supplies/Materials	\$61,000	\$0	\$10,000	\$0	16.39%	-
DNR IDP	\$70,000	\$0	\$30,000	\$0	42.86%	-
<b>Total</b>	<b>\$8,699,700</b>	<b>\$697,700</b>	<b>\$2,375,000</b>	<b>\$247,900</b>	<b>27.30%</b>	<b>35.53%</b>

### How will this program accommodate the reduced appropriation recommendation from the original proposed requested amount?

Reduced acreage of fee acquisition, conservation easement and restoration and enhancement. No restoration and enhancement on easement lands due to reduced appropriation.

# Output

**Table 1a. Acres by Resource Type**

Type	Total Proposed	Total in AP	Percentage of Proposed
Restore	201	0	0.00%
Protect in Fee with State PILT Liability	1,173	280	23.87%
Protect in Fee W/O State PILT Liability	0	0	-
Protect in Easement	1,200	360	30.00%
Enhance	370	70	18.92%

**Table 2. Total Funding by Resource Type**

Type	Total Proposed	Total in AP	Percentage of Proposed
Restore	983,000	60,000	6.10%
Protect in Fee with State PILT Liability	5,306,300	1,425,000	26.85%
Protect in Fee W/O State PILT Liability	0	0	-
Protect in Easement	1,967,000	700,000	35.59%
Enhance	443,400	190,000	42.85%

**Table 3. Acres within each Ecological Section**

Type	Total Proposed	Total in AP	Percentage of Proposed
Restore	201	0	0.00%
Protect in Fee with State PILT Liability	1,173	280	23.87%
Protect in Fee W/O State PILT Liability	0	0	-
Protect in Easement	1,200	360	30.00%
Enhance	370	70	18.92%

**Table 4. Total Funding within each Ecological Section**

Type	Total Proposed	Total in AP	Percentage of Proposed
Restore	983,000	60,000	6.10%
Protect in Fee with State PILT Liability	5,306,300	1,425,000	26.85%
Protect in Fee W/O State PILT Liability	0	0	-
Protect in Easement	1,967,000	700,000	35.59%
Enhance	443,400	190,000	42.85%