

Lessard-Sams Outdoor Heritage Council

Laws of Minnesota 2017 Accomplishment Plan



Date: October 25, 2016

Program or Project Title: Laurentian Forest - St. Louis County Habitat Project

Funds Recommended: \$ 2,400,000

Manager's Name: Craig Engwall

Title: Executive Director

Organization: MN Deer Hunters Association

Address: 460 Peterson Road

City: Grand Rapids, MN 55744

Office Number: 218-327-1103

Fax Number: 218-327-1349

Email: craig.engwall@mndeerhunters.com

Website: www.mndeerhunters.com

Legislative Citation: ML 2017, Ch. X, Art. X, Sec. X

Appropriation Language:

County Locations: St. Louis

Regions in which work will take place:

- Northern Forest

Activity types:

- Protect in Fee

Priority resources addressed by activity:

- Forest
- Habitat

Abstract:

Project partners Minnesota Deer Hunters Association (MDHA), Ruffed Grouse Society (RGS) and The Conservation Fund (TCF) will work cooperatively with St. Louis County to protect in fee approximately 2,500 acres of forest habitat at risk of being converted to uses that would degrade critical habitat for wildlife in Minnesota's northeast forest landscape. Targeted parcels will be those that are vital to maintaining large, unfragmented blocks of forest that deliver the greatest habitat benefits. Adjacency to county, state and federal lands will be a key focus in leveraging the habitat benefits provided by project parcels.

Design and scope of work:

Problem to be addressed

Northern Minnesota's forest-dominated landscape provides important wildlife habitat, clean water, public recreational opportunities and economic value from its timber. It includes many large, privately owned parcels that are interspersed with millions of acres of county, state, federal and tribal forest lands. These privately owned parcels total more than one million acres of which most are held by large corporations.

The past two decades have seen significant restructuring in the timber industry that has changed the northern forest and put habitat and public access at risk. More than 500,000 acres of industrial forest lands have changed ownership. Much of this land has been sold

and converted into smaller parcels. The Minnesota Forest Resources Council has identified parcelization as the major policy problem confronting the ecological and economic health of Minnesota's forests. Forest conversion and fragmentation are two major physical alterations to the forest that can result from parcelization.

In and near the focus area of this project, this parcelization trend continues. For example, the Potlatch Corporation (Potlatch) once owned 345,000 acres in the northern forest and now holds only 160,000 acres. In St. Louis County, Potlatch ownership has dropped from 110,000 acres to 70,000 acres. Potlatch has entirely divested its 40,000 acres in Lake County, and it retains only 1,000 acres of the nearly 21,000 acres it held in Pine and Carlton Counties. This divestiture continues as Potlatch has sold, or is in the process of selling, over 175 parcels in St. Louis County since 2013.

Goals and Scope of Work

To mitigate forest conversion and fragmentation and the associated loss of habitat within St. Louis County, this project will protect by acquisition in fee approximately 2,500 acres of high priority habitat.

All of the lands to be protected are currently owned by Potlatch. The project partners and St. Louis County have worked with Potlatch to review all of the company's holdings within the county to determine which parcels best fulfill project goals. See project map and prioritization methodology (Attachment A). St. Louis County has put its full support behind this project. See County Resolution (Attachment B). Many of the remaining Potlatch parcels that do not receive funding under this application are well-suited to being the focus of a future Request for Funding.

Project partners, in coordination with St. Louis County, will use the following criteria to prioritize parcels:

- 1) Habitat quality;
- 2) Adjacency to other large forest blocks, with an emphasis on lands managed by St. Louis County;
- 3) Immediacy of threat of conversion; and
- 4) Potential to acquire parcels where mineral rights have not been severed.

As will be discussed in greater detail below, St. Louis County will hold and manage all project lands.

How does the request address MN habitats that have: historical value to fish and wildlife, wildlife species of greatest conservation need, MN County Biological Survey data, and/or rare, threatened and endangered species inventories:

While MDHA and RGS are organizations that contain single species in their names, their work has always focused on habitat benefits for multiple species, game and non-game. An example of this is the work completed in Minnesota Moose Habitat Collaborative - ML 2012, Ch. 264, Art. 1, Sec. 2, Subd. 3(e), and the ongoing work in Minnesota Moose Habitat Collaborative Phase II - ML 2013, Ch. 137, Art. 1, Sec. 2, Subd. 3(f).

In addition to game species such as white-tailed deer, ruffed grouse, woodcock and black bear, the project area contains numerous songbirds and species that are endangered, threatened, or of special concern including moose, gray wolf, Canadian lynx, bald eagle, boreal owl, northern goshawk, northern long-eared bat, big brown bat, tricolored bat, red-shouldered hawk, and peregrine falcon. The parcels selected for this project will help to retain intact forest landscapes that will benefit all of these species.

Describe the science based planning and evaluation model used:

Minnesota County Biological Survey (MCBS) work in St. Louis County is only partially completed and is continuing. MCBS hopes to have at least 90% of the survey work completed by June 2019. Project partners and SLC Lands will work with DNR ecologists and MCBS staff to obtain the best possible and most current information on the distribution and ecology of native plants and animals, native plant communities and the most intact landscapes when evaluating which parcels will be selected for inclusion in the project.

GIS modeling analysis will be completed by project partners and SLC Lands that incorporates multiple criteria to identify the highest priority Potlatch parcels to include in the project.

Which sections of the Minnesota Statewide Conservation and Preservation Plan are applicable to this program:

- H1 Protect priority land habitats
- LU8 Protect large blocks of forest land

Which other plans are addressed in this program:

- Minnesota Forest Resource Council Landscape Plans
- Outdoor Heritage Fund: A 25 Year Framework

Which LSOHC section priorities are addressed in this program:

Northern Forest:

- Provide access to manage habitat on landlocked public properties or protect forest land from parcelization and fragmentation through fee acquisition, conservation or access easement

Relationship to other funds:

- Not Listed

Describe the relationship of the funds:

Not Listed

How does this program include leverage in funds or other effort to supplement any OHF appropriation:

This project will complement habitat work in St. Louis County that includes two existing habitat projects as well as a proposal that is being submitted to the Council for its FY 2018 Call for Funding Request. Project partners and St. Louis County have been active participants in the two phases of the Minnesota Moose Habitat Collaborative as well as the Sax-Zim Bog wetland restoration project. Additionally, TCF is submitting a proposal that would protect over 2,250 acres of habitat on Bushmen Lake.

This project will enable the partners and St. Louis County to select Potlatch parcels that will not only make this an excellent stand-alone project, but will also leverage the Moose Collaborative, Sax-Zim and Bushmen Lake projects.

Describe the source and amount of non-OHF money spent for this work in the past:

Not Listed

How will you sustain and/or maintain this work after the Outdoor Heritage Funds are expended:

As indicated above, SLC Lands will manage the acquired lands. SLC Lands has a wealth of forest management experience as it manages nearly 900,000 acres of County Administered land, its management system is certified to the ISO 14001 standard, and its practices are certified to the Sustainable Forestry Initiative (SFI) standard. The purpose of SLC Lands is to protect the variety of benefits provided by County Administered lands. These benefits include: healthy forests, wildlife habitat and fisheries, accessible recreational opportunities, forest diversity, forest products, and financial returns which all contribute to local community viability.

Project partners will continue to work with SLC Lands to ensure the best habitat outcomes and evaluate the possibility of developing future CPL projects to enhance the habitat benefits from the project.

Explain the things you will do in the future to maintain project outcomes:

Year	Source of Funds	Step 1	Step 2	Step 3
2019 and ongoing	St. Louis County	Manage and monitor lands consistent with forest certification and management plans.		

Activity Details:

If funded, this program will meet all applicable criteria set forth in MS 97A.056 - **Yes**

Will there be planting of corn or any crop on OHF land purchased or restored in this program - **No**

Will local government approval be sought prior to acquisition - **Yes**

Is the land you plan to acquire free of any other permanent protection - **Yes**

Is this land currently open for hunting and fishing - **No**

Will the land be open for hunting and fishing after completion - **Yes**

State regulations will apply to this land.

Who will eventually own the fee title land?

St. Louis County.

Are there currently trails or roads on any of the acquisitions on the parcel list - **Yes**

Describe the types of trails or roads and the allowable uses:

There are existing routes on potential project parcels that were developed for timber harvest and management purposes. In addition to forestry related activities, these routes have been used by hunters and others for recreation, and some of that use has included ATV travel.

Will the trails or roads remain and uses continue to be allowed after OHF acquisition - **Yes**

How will maintenance and monitoring be accomplished:

SLC Lands will maintain and monitor these trails and roads under its forest certification standards.

Will new trails or roads be developed or improved as a result of the OHF acquisition - **Yes**

Describe the types of trails or roads and the allowable uses:

SLC Lands may need to develop routes for forest management. Allowable uses will be only those that are consistent with SLC Lands' forest management and its certification standards.

How will maintenance and monitoring be accomplished:

SLC Lands will maintain and monitor these trails and roads under its forest certification standards.

Accomplishment Timeline:

Activity	Approximate Date Completed
Negotiate with landowner and enter into a purchase agreement.	August 2017
Conduct due diligence for acquisition of the properties (appraisals, title work etc.).	November 2017
Acquire fee title to the properties.	June 2018
Transfer lands to St. Louis County.	December 2018

Date of Final Report Submission: 11/1/2020

Federal Funding:

Do you anticipate federal funds as a match for this program - **No**

Outcomes:

Programs in the northern forest region:

- Forestlands are protected from development and fragmentation *GIS mapping will show how project parcels align with existing protected forest habitat to maximize project benefits.*

Budget Spreadsheet

Budget reallocations up to 10% do not require an amendment to the Accomplishment Plan

How will this program accommodate the reduced appropriation recommendation from the original proposed requested amount

With the decrease in the appropriation, we will reduce the acres protected in fee w/o State PILT liability.

Total Amount of Request: \$ 2400000

Budget and Cash Leverage

BudgetName	LSOHC Request	Anticipated Leverage	Leverage Source	Total
Personnel	\$116,900	\$0		\$116,900
Contracts	\$0	\$0		\$0
Fee Acquisition w/ PILT	\$0	\$0		\$0
Fee Acquisition w/o PILT	\$2,207,300	\$0		\$2,207,300
Easement Acquisition	\$0	\$0		\$0
Easement Stewardship	\$0	\$0		\$0
Travel	\$3,000	\$0		\$3,000
Professional Services	\$40,000	\$0		\$40,000
Direct Support Services	\$13,000	\$0		\$13,000
DNR Land Acquisition Costs	\$0	\$0		\$0
Capital Equipment	\$0	\$0		\$0
Other Equipment/Tools	\$0	\$0		\$0
Supplies/Materials	\$19,800	\$0		\$19,800
DNR IDP	\$0	\$0		\$0
Total	\$2,400,000	\$0		\$2,400,000

Personnel

Position	FTE	Over # of years	LSOHC Request	Anticipated Leverage	Leverage Source	Total
MN State Director	0.25	0.00	\$40,000	\$0		\$40,000
MN Real Estate Associate	0.15	0.00	\$12,000	\$0		\$12,000
Grant Manager	0.13	3.00	\$47,700	\$0		\$47,700
Fiscal Agent	0.04	3.00	\$8,300	\$0		\$8,300
Project Manager	0.05	3.00	\$8,900	\$0		\$8,900
Total	0.62	9.00	\$116,900	\$0		\$116,900

Budget and Cash Leverage by Partnership

BudgetName	Partnership	LSOHC Request	Anticipated Leverage	Leverage Source	Total
Personnel	CF	\$52,000	\$0		\$52,000
Contracts	CF	\$0	\$0		\$0
Fee Acquisition w/ PILT	CF	\$0	\$0		\$0
Fee Acquisition w/o PILT	CF	\$0	\$0		\$0
Easement Acquisition	CF	\$0	\$0		\$0
Easement Stewardship	CF	\$0	\$0		\$0
Travel	CF	\$3,000	\$0		\$3,000
Professional Services	CF	\$40,000	\$0		\$40,000
Direct Support Services	CF	\$13,000	\$0		\$13,000
DNR Land Acquisition Costs	CF	\$0	\$0		\$0
Capital Equipment	CF	\$0	\$0		\$0
Other Equipment/Tools	CF	\$0	\$0		\$0
Supplies/Materials	CF	\$0	\$0		\$0
DNR IDP	CF	\$0	\$0		\$0
Total		\$108,000	\$0		\$108,000

Personnel - CF

Position	FTE	Over # of years	LSOHC Request	Anticipated Leverage	Leverage Source	Total
MN State Director	0.25	0.00	\$40,000	\$0		\$40,000
MN Real Estate Associate	0.15	0.00	\$12,000	\$0		\$12,000
Total	0.40	0.00	\$52,000	\$0		\$52,000

Budget Name	Partnership	LSOHC Request	Anticipated Leverage	Leverage Source	Total
Personnel	MDHA	\$64,900	\$0		\$64,900
Contracts	MDHA	\$0	\$0		\$0
Fee Acquisition w/ PILT	MDHA	\$0	\$0		\$0
Fee Acquisition w/o PILT	MDHA	\$2,207,300	\$0		\$2,207,300
Easement Acquisition	MDHA	\$0	\$0		\$0
Easement Stewardship	MDHA	\$0	\$0		\$0
Travel	MDHA	\$0	\$0		\$0
Professional Services	MDHA	\$0	\$0		\$0
Direct Support Services	MDHA	\$0	\$0		\$0
DNR Land Acquisition Costs	MDHA	\$0	\$0		\$0
Capital Equipment	MDHA	\$0	\$0		\$0
Other Equipment/Tools	MDHA	\$0	\$0		\$0
Supplies/Materials	MDHA	\$19,800	\$0		\$19,800
DNR IDP	MDHA	\$0	\$0		\$0
Total		\$2,292,000	\$0		\$2,292,000

Personnel - MDHA

Position	FTE	Over # of years	LSOHC Request	Anticipated Leverage	Leverage Source	Total
Grant Manager	0.13	3.00	\$47,700	\$0		\$47,700
Fiscal Agent	0.04	3.00	\$8,300	\$0		\$8,300
Project Manager	0.05	3.00	\$8,900	\$0		\$8,900
Total	0.22	9.00	\$64,900	\$0		\$64,900

Amount of Request: \$2,400,000

Amount of Leverage: \$0

Leverage as a percent of the Request: 0.00%

DSS + Personnel: \$129,900

As a % of the total request: 5.41%

How did you determine which portions of the Direct Support Services of your shared support services is direct to this program:

Our real estate support staff keeps hourly time sheets to track direct time spent on projects by grant source. We have used those past metrics to estimate the costs for this grant.

Describe and explain leverage source and confirmation of funds:

Not Listed

Output Tables

Table 1a. Acres by Resource Type

Type	Wetlands	Prairies	Forest	Habitats	Total
Restore	0	0	0	0	0
Protect in Fee with State PILT Liability	0	0	0	0	0
Protect in Fee W/O State PILT Liability	0	0	2,500	0	2,500
Protect in Easement	0	0	0	0	0
Enhance	0	0	0	0	0
Total	0	0	2,500	0	2,500

Table 2. Total Funding by Resource Type

Type	Wetlands	Prairies	Forest	Habitats	Total
Restore	\$0	\$0	\$0	\$0	\$0
Protect in Fee with State PILT Liability	\$0	\$0	\$0	\$0	\$0
Protect in Fee W/O State PILT Liability	\$0	\$0	\$2,400,000	\$0	\$2,400,000
Protect in Easement	\$0	\$0	\$0	\$0	\$0
Enhance	\$0	\$0	\$0	\$0	\$0
Total	\$0	\$0	\$2,400,000	\$0	\$2,400,000

Table 3. Acres within each Ecological Section

Type	Metro Urban	ForestPrairie	SE Forest	Prairie	N Forest	Total
Restore	0	0	0	0	0	0
Protect in Fee with State PILT Liability	0	0	0	0	0	0
Protect in Fee W/O State PILT Liability	0	0	0	0	2,500	2,500
Protect in Easement	0	0	0	0	0	0
Enhance	0	0	0	0	0	0
Total	0	0	0	0	2,500	2,500

Table 4. Total Funding within each Ecological Section

Type	Metro Urban	ForestPrairie	SE Forest	Prairie	N Forest	Total
Restore	\$0	\$0	\$0	\$0	\$0	\$0
Protect in Fee with State PILT Liability	\$0	\$0	\$0	\$0	\$0	\$0
Protect in Fee W/O State PILT Liability	\$0	\$0	\$0	\$0	\$2,400,000	\$2,400,000
Protect in Easement	\$0	\$0	\$0	\$0	\$0	\$0
Enhance	\$0	\$0	\$0	\$0	\$0	\$0
Total	\$0	\$0	\$0	\$0	\$2,400,000	\$2,400,000

Table 5. Average Cost per Acre by Resource Type

Type	Wetlands	Prairies	Forest	Habitats
Restore	\$0	\$0	\$0	\$0
Protect in Fee with State PILT Liability	\$0	\$0	\$0	\$0
Protect in Fee W/O State PILT Liability	\$0	\$0	\$960	\$0
Protect in Easement	\$0	\$0	\$0	\$0
Enhance	\$0	\$0	\$0	\$0

Table 6. Average Cost per Acre by Ecological Section

Type	Metro/Urban	Forest/Prairie	SE Forest	Prairie	Northern Forest
Restore	\$0	\$0	\$0	\$0	\$0
Protect in Fee with State PILT Liability	\$0	\$0	\$0	\$0	\$0
Protect in Fee W/O State PILT Liability	\$0	\$0	\$0	\$0	\$960
Protect in Easement	\$0	\$0	\$0	\$0	\$0
Enhance	\$0	\$0	\$0	\$0	\$0

Target Lake/Stream/River Feet or Miles

0

Parcel List

For restoration and enhancement programs ONLY: Managers may add, delete, and substitute projects on this parcel list based upon need, readiness, cost, opportunity, and/or urgency so long as the substitute parcel/project forwards the constitutional objectives of this program in the Project Scope table of this accomplishment plan. The final accomplishment plan report will include the final parcel list.

Section 1 - Restore / Enhance Parcel List

No parcels with an activity type restore or enhance.

Section 2 - Protect Parcel List

St. Louis

Name	TRDS	Acres	Est Cost	Existing Protection?	Hunting?	Fishing?
St. Louis County 1	05020210	40	\$40,000	No	No	No
St. Louis County 10	05017215	40	\$40,000	No	No	No
St. Louis County 100	05519214	40	\$40,000	No	No	No
St. Louis County 101	05519214	40	\$40,000	No	No	No
St. Louis County 102	05519214	40	\$40,000	No	No	No
St. Louis County 103	05519214	40	\$40,000	No	No	No
St. Louis County 104	05519214	40	\$40,000	No	No	No
St. Louis County 105	05519214	40	\$40,000	No	No	No
St. Louis County 106	05519214	40	\$40,000	No	No	No
St. Louis County 107	05519214	40	\$40,000	No	No	No
St. Louis County 108	05519214	40	\$40,000	No	No	No
St. Louis County 109	05519214	40	\$40,000	No	No	No
St. Louis County 11	05017215	40	\$40,000	No	No	No
St. Louis County 110	05519216	40	\$40,000	No	No	No
St. Louis County 111	05519216	40	\$40,000	No	No	No
St. Louis County 112	05519217	40	\$40,000	No	No	No
St. Louis County 113	05519219	40	\$40,000	No	No	No
St. Louis County 114	05519219	40	\$40,000	No	No	No
St. Louis County 115	05519220	40	\$40,000	No	No	No
St. Louis County 116	05519220	40	\$40,000	No	No	No
St. Louis County 117	05519220	40	\$40,000	No	No	No
St. Louis County 118	05519220	40	\$40,000	No	No	No
St. Louis County 119	05519220	40	\$40,000	No	No	No
St. Louis County 12	05017215	40	\$40,000	No	No	No
St. Louis County 120	05519220	20	\$20,000	No	No	No
St. Louis County 121	05519220	40	\$40,000	No	No	No
St. Louis County 122	05519220	40	\$40,000	No	No	No
St. Louis County 123	05519221	30	\$30,000	No	No	No
St. Louis County 124	05519221	40	\$40,000	No	No	No
St. Louis County 125	05519221	20	\$20,000	No	No	No
St. Louis County 126	05519221	40	\$40,000	No	No	No
St. Louis County 127	05519221	40	\$40,000	No	No	No
St. Louis County 128	05519221	60	\$60,000	No	No	No
St. Louis County 129	05519221	40	\$40,000	No	No	No
St. Louis County 13	05017215	40	\$40,000	No	No	No
St. Louis County 130	05519221	30	\$30,000	No	No	No
St. Louis County 131	05519221	40	\$40,000	No	No	No
St. Louis County 132	05519221	30	\$30,000	No	No	No
St. Louis County 133	05519221	50	\$50,000	No	No	No
St. Louis County 134	05519221	40	\$40,000	No	No	No
St. Louis County 135	05519221	40	\$40,000	No	No	No
St. Louis County 136	05519228	40	\$40,000	No	No	No
St. Louis County 137	05519228	40	\$40,000	No	No	No
St. Louis County 138	05519228	40	\$40,000	No	No	No
St. Louis County 139	05519228	40	\$40,000	No	No	No
St. Louis County 14	05017215	40	\$40,000	No	No	No
St. Louis County 140	05519228	40	\$40,000	No	No	No
St. Louis County 141	05519228	40	\$40,000	No	No	No
St. Louis County 142	05519228	40	\$40,000	No	No	No
St. Louis County 143	05519229	40	\$40,000	No	No	No
St. Louis County 144	05519230	40	\$40,000	No	No	No
St. Louis County 145	05519230	40	\$40,000	No	No	No
St. Louis County 146	05519230	40	\$40,000	No	No	No
St. Louis County 147	05519230	40	\$40,000	No	No	No
St. Louis County 148	05519230	40	\$40,000	No	No	No
St. Louis County 149	05519230	40	\$40,000	No	No	No
St. Louis County 15	05017215	40	\$40,000	No	No	No
St. Louis County 150	05519233	40	\$40,000	No	No	No
St. Louis County 151	05519233	40	\$40,000	No	No	No
St. Louis County 152	05519233	40	\$40,000	No	No	No

St. Louis County 377	06217210		40	\$40,000	No	No	No
St. Louis County 378	06217210		40	\$40,000	No	No	No
St. Louis County 379	06217210		40	\$40,000	No	No	No
St. Louis County 38	05017222		40	\$40,000	No	No	No
St. Louis County 380	06220210		40	\$40,000	No	No	No
St. Louis County 381	06220201		40	\$40,000	No	No	No
St. Louis County 382	06220201		40	\$40,000	No	No	No
St. Louis County 383	06220201		40	\$40,000	No	No	No
St. Louis County 384	06220201		40	\$40,000	No	No	No
St. Louis County 385	06220236		40	\$40,000	No	No	No
St. Louis County 386	06220236		40	\$40,000	No	No	No
St. Louis County 387	06319236		40	\$40,000	No	No	No
St. Louis County 388	06319208		40	\$40,000	No	No	No
St. Louis County 389	06320208		40	\$40,000	No	No	No
St. Louis County 39	05017222		40	\$40,000	No	No	No
St. Louis County 390	06320220		40	\$40,000	No	No	No
St. Louis County 391	06320220		40	\$40,000	No	No	No
St. Louis County 392	06320221		40	\$40,000	No	No	No
St. Louis County 393	06320221		40	\$40,000	No	No	No
St. Louis County 394	06320221		40	\$40,000	No	No	No
St. Louis County 395	06320221		40	\$40,000	No	No	No
St. Louis County 396	06320221		40	\$40,000	No	No	No
St. Louis County 397	06320221		40	\$40,000	No	No	No
St. Louis County 398	06320221		40	\$40,000	No	No	No
St. Louis County 399	06320221		40	\$40,000	No	No	No
St. Louis County 4	05020210		20	\$20,000	No	No	No
St. Louis County 40	05017222		40	\$40,000	No	No	No
St. Louis County 400	06320221		40	\$40,000	No	No	No
St. Louis County 401	06320229		40	\$40,000	No	No	No
St. Louis County 402	06320229		40	\$40,000	No	No	No
St. Louis County 403	06320229		40	\$40,000	No	No	No
St. Louis County 404	06320229		40	\$40,000	No	No	No
St. Louis County 405	06321229		40	\$40,000	No	No	No
St. Louis County 406	06321234		40	\$40,000	No	No	No
St. Louis County 407	06321234		40	\$40,000	No	No	No
St. Louis County 408	06321234		40	\$40,000	No	No	No
St. Louis County 409	06321235		40	\$40,000	No	No	No
St. Louis County 41	05017222		40	\$40,000	No	No	No
St. Louis County 410	06321235		40	\$40,000	No	No	No
St. Louis County 411	06321227		40	\$40,000	No	No	No
St. Louis County 412	06321227		40	\$40,000	No	No	No
St. Louis County 42	05017222		40	\$40,000	No	No	No
St. Louis County 43	05017222		40	\$40,000	No	No	No
St. Louis County 44	05017222		40	\$40,000	No	No	No
St. Louis County 45	05017222		40	\$40,000	No	No	No
St. Louis County 46	05017222		40	\$40,000	No	No	No
St. Louis County 47	05017228		40	\$40,000	No	No	No
St. Louis County 48	05017228		40	\$40,000	No	No	No
St. Louis County 49	05017228		40	\$40,000	No	No	No
St. Louis County 5	05020210		40	\$40,000	No	No	No
St. Louis County 50	05312220		40	\$40,000	No	No	No
St. Louis County 51	05312220		40	\$40,000	No	No	No
St. Louis County 52	05312221		40	\$40,000	No	No	No
St. Louis County 53	05312221		40	\$40,000	No	No	No
St. Louis County 54	05312221		20	\$20,000	No	No	No
St. Louis County 55	05312221		40	\$40,000	No	No	No
St. Louis County 56	05312221		10	\$10,000	No	No	No
St. Louis County 57	05312221		40	\$40,000	No	No	No
St. Louis County 58	05312228		40	\$40,000	No	No	No
St. Louis County 59	05312228		40	\$40,000	No	No	No
St. Louis County 6	05020210		40	\$40,000	No	No	No
St. Louis County 60	05312229		40	\$40,000	No	No	No

St. Louis County 61	05312229	40	\$40,000	No	No	No
St. Louis County 62	05414218	40	\$40,000	No	No	No
St. Louis County 63	05415213	40	\$40,000	No	No	No
St. Louis County 64	05415213	40	\$40,000	No	No	No
St. Louis County 65	05415213	40	\$40,000	No	No	No
St. Louis County 66	05415213	40	\$40,000	No	No	No
St. Louis County 67	05415213	20	\$20,000	No	No	No
St. Louis County 68	05415213	40	\$40,000	No	No	No
St. Louis County 69	05415213	40	\$40,000	No	No	No
St. Louis County 7	05020210	40	\$40,000	No	No	No
St. Louis County 70	05415213	40	\$40,000	No	No	No
St. Louis County 71	05415224	40	\$40,000	No	No	No
St. Louis County 72	05415224	40	\$40,000	No	No	No
St. Louis County 73	05415224	40	\$40,000	No	No	No
St. Louis County 74	05519201	40	\$40,000	No	No	No
St. Louis County 75	05519201	40	\$40,000	No	No	No
St. Louis County 76	05519201	40	\$40,000	No	No	No
St. Louis County 77	05519202	50	\$50,000	No	No	No
St. Louis County 78	05519202	30	\$30,000	No	No	No
St. Louis County 79	05519202	40	\$40,000	No	No	No
St. Louis County 8	05017215	40	\$40,000	No	No	No
St. Louis County 80	05519202	40	\$40,000	No	No	No
St. Louis County 81	05519208	40	\$40,000	No	No	No
St. Louis County 82	05519208	40	\$40,000	No	No	No
St. Louis County 83	05519208	40	\$40,000	No	No	No
St. Louis County 84	05519208	40	\$40,000	No	No	No
St. Louis County 85	05519208	40	\$40,000	No	No	No
St. Louis County 86	05519208	40	\$40,000	No	No	No
St. Louis County 87	05519208	40	\$40,000	No	No	No
St. Louis County 88	05519208	40	\$40,000	No	No	No
St. Louis County 89	05519208	40	\$40,000	No	No	No
St. Louis County 9	05017215	40	\$40,000	No	No	No
St. Louis County 90	05519208	40	\$40,000	No	No	No
St. Louis County 91	05519208	40	\$40,000	No	No	No
St. Louis County 92	05519208	40	\$40,000	No	No	No
St. Louis County 93	05519211	40	\$40,000	No	No	No
St. Louis County 94	05519211	40	\$40,000	No	No	No
St. Louis County 95	05519211	40	\$40,000	No	No	No
St. Louis County 96	05519211	40	\$40,000	No	No	No
St. Louis County 97	05519211	40	\$40,000	No	No	No
St. Louis County 98	05519214	40	\$40,000	No	No	No
St. Louis County 99	05519214	40	\$40,000	No	No	No

Section 2a - Protect Parcel with Bldgs

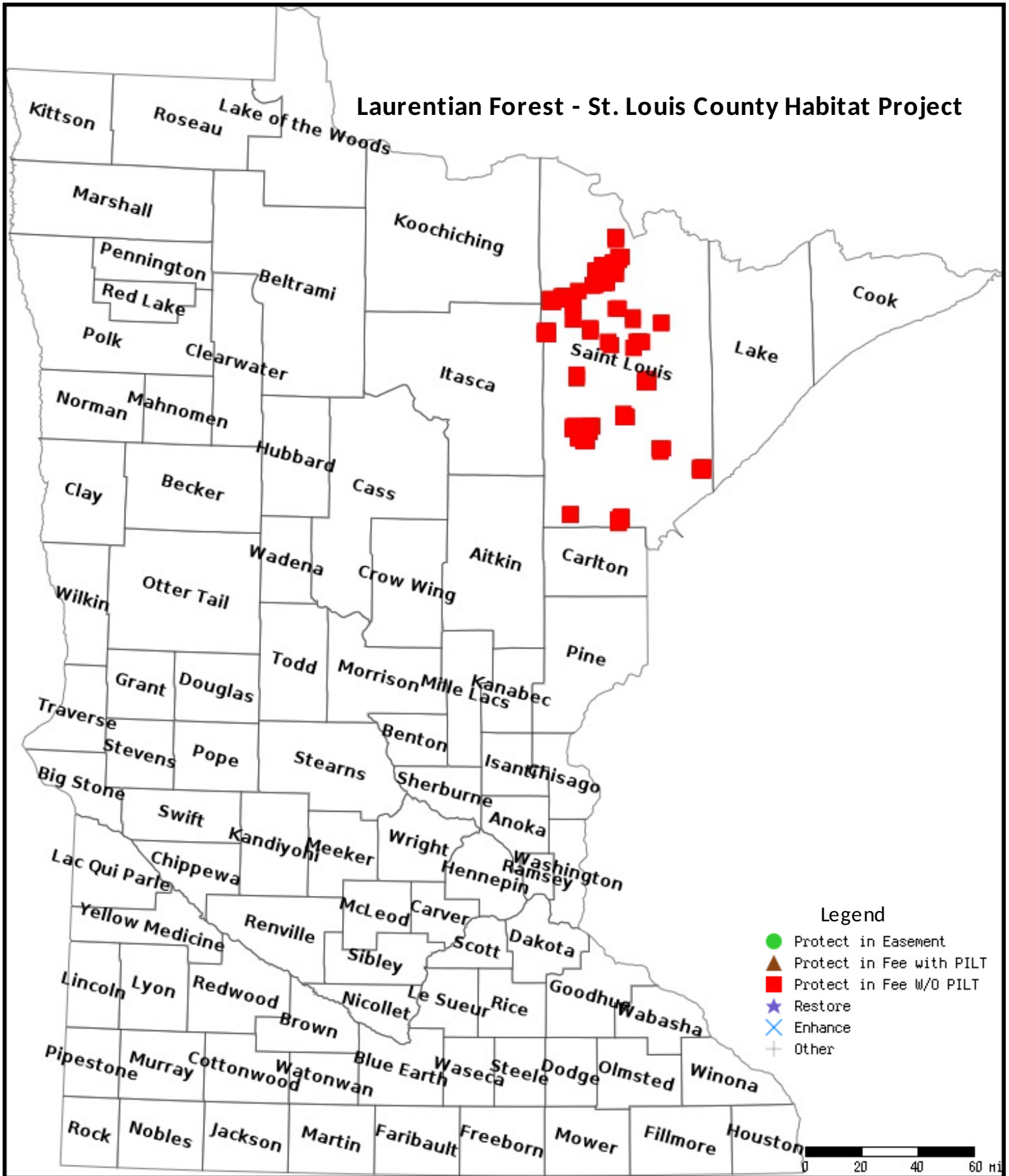
No parcels with an activity type protect and has buildings.

Section 3 - Other Parcel Activity

No parcels with an other activity type.

Parcel Map

Laurentian Forest - St. Louis County Habitat Project



Data Generated From Parcel List

Lessard-Sams Outdoor Heritage Council Comparison Report

Program Title: 2017 - Laurentian Forest - St. Louis County Habitat Project

Organization: MN Deer Hunters Association

Manager: Craig Engwall

Budget

Requested Amount: \$8,309,600

Appropriated Amount: \$2,400,000

Percentage: 28.88%

Budget Item	Total Requested		Total Appropriated		Percentage of Request	
	LSOHC Request	Anticipated Leverage	Appropriated Amount	Anticipated Leverage	Percentage of Request	Percentage of Leverage
Personnel	\$89,300	\$0	\$116,900	\$0	130.91%	-
Contracts	\$195,200	\$0	\$0	\$0	0.00%	-
Fee Acquisition w/ PILT	\$0	\$0	\$0	\$0	-	-
Fee Acquisition w/o PILT	\$8,000,000	\$0	\$2,207,300	\$0	27.59%	-
Easement Acquisition	\$0	\$0	\$0	\$0	-	-
Easement Stewardship	\$0	\$0	\$0	\$0	-	-
Travel	\$0	\$0	\$3,000	\$0	-	-
Professional Services	\$0	\$0	\$40,000	\$0	-	-
Direct Support Services	\$0	\$0	\$13,000	\$0	-	-
DNR Land Acquisition Costs	\$0	\$0	\$0	\$0	-	-
Capital Equipment	\$0	\$0	\$0	\$0	-	-
Other Equipment/Tools	\$0	\$0	\$0	\$0	-	-
Supplies/Materials	\$25,100	\$0	\$19,800	\$0	78.88%	-
DNR IDP	\$0	\$0	\$0	\$0	-	-
Total	\$8,309,600	\$0	\$2,400,000	\$0	28.88%	-

How will this program accommodate the reduced appropriation recommendation from the original proposed requested amount?

With the decrease in the appropriation, we will reduce the acres protected in fee w/o State PILT liability.

Output

Table 1a. Acres by Resource Type

Type	Total Proposed	Total in AP	Percentage of Proposed
Restore	0	0	-
Protect in Fee with State PILT Liability	0	0	-
Protect in Fee W/O State PILT Liability	8,000	2,500	31.25%
Protect in Easement	0	0	-
Enhance	0	0	-

Table 2. Total Funding by Resource Type

Type	Total Proposed	Total in AP	Percentage of Proposed
Restore	0	0	-
Protect in Fee with State PILT Liability	0	0	-
Protect in Fee W/O State PILT Liability	8,309,600	2,400,000	28.88%
Protect in Easement	0	0	-
Enhance	0	0	-

Table 3. Acres within each Ecological Section

Type	Total Proposed	Total in AP	Percentage of Proposed
Restore	0	0	-
Protect in Fee with State PILT Liability	0	0	-
Protect in Fee W/O State PILT Liability	8,000	2,500	31.25%
Protect in Easement	0	0	-
Enhance	0	0	-

Table 4. Total Funding within each Ecological Section

Type	Total Proposed	Total in AP	Percentage of Proposed
Restore	0	0	-
Protect in Fee with State PILT Liability	0	0	-
Protect in Fee W/O State PILT Liability	8,309,600	2,400,000	28.88%
Protect in Easement	0	0	-
Enhance	0	0	-