



Lessard-Sams Outdoor Heritage Council

Anoka Sand Plain Habitat Conservation - Phase IV

Laws of Minnesota 2016 Final Report

General Information

Date: 11/03/2022

Project Title: Anoka Sand Plain Habitat Conservation - Phase IV

Funds Recommended: \$1,208,000

Legislative Citation: ML 2016, Ch. 172, Art. 1, Sec. 2, Subd. 2(k)

Appropriation Language: \$1,208,000 the second year is to the commissioner of natural resources for agreements to restore and enhance wildlife habitat on public lands in Anoka, Isanti, Morrison, Sherburne, and Todd Counties as follows: \$93,000 to Anoka Conservation District; \$25,000 to Isanti County Parks and Recreation Department; \$813,000 to Great River Greening; and \$277,000 to the National Wild Turkey Federation. A list of proposed land restorations and enhancements must be provided as part of the required accomplishment plan.

Manager Information

Manager's Name: Wiley Buck

Title: Senior Program Manager

Organization: Great River Greening

Address: 215 Starkey Street Suite 2200

City: St. Paul, MN 55107

Email: wbuck@greatrivergreening.org

Office Number: 651-665-9500

Mobile Number: 651-318-8667

Fax Number:

Website: www.greatrivergreening.org

Location Information

County Location(s): Sherburne, Anoka, Morrison, Todd and Isanti.

Eco regions in which work will take place:

- Forest / Prairie Transition
- Metro / Urban
- Northern Forest

Activity types:

- Restore
- Enhance

Priority resources addressed by activity:

- Wetlands
- Prairie
- Forest
- Habitat

Narrative

Summary of Accomplishments

Great River Greening (GRG), Anoka Conservation District (ACD), Isanti County Parks (ICP) and National Wild Turkey Federation (NWTf) completed restoration and enhancement (R/E) activities on 1,896, equal to 147% of the planned 1,286 acres, and on 1.2 miles of shoreland, over 17 parcels. Through the process, we improved habitat for listed species, improved priority habitats for Species in Greatest Conservation Need (SGCN) as identified in the Minnesota Wildlife Action Plan (WAP), through R/E on both large habitat complexes and habitat corridors, including multiple sites of significant biodiversity and rare species records.

Process & Methods

The Anoka Sand Plain (ASP) Partnership includes government units and non-profit organizations working to protect, enhance, and restore lands and waters centered around the DNR's ASP ecoregion boundary. Our work was guided by the processes and goals outlined in the Minnesota Wildlife Action Plan (WAP). During this appropriation, the ASP Partnership developed the Anoka Sand Plain 10-Year Strategic Plan to guide our activities going forward.

Problems Addressed

Wildlife and rare plant habitat in the ASP is impacted by numerous threats, resulting in an urgent need for action:

1. Native habitats have become rare and continue to be lost. Oak savanna and prairie - the characteristic habitat of the ASP ecoregion - now persist over <1% of their historic range. Due to its proximity to the Twin Cities, the ASP is realizing immense development pressure on what native habitat remains.
2. Degradation of habitats on public lands and waters threatens associated wildlife populations. Reduction in habitat quality has had profound impacts on wildlife in the ASP. The Minnesota WAP identifies maintenance, enhancement and protection of oak savanna as its first priority in addressing the 97 Species in Greatest Conservation Need (SGCN) occurring in this ecological subsection.
3. Government agencies often lack sufficient resources and capacity to manage important lands. Inadequate funding/capacity for restoration and enhancement activities on public lands has resulted in declines in the condition of Minnesota's most important wildlife habitats.
4. Private land is a crucial component to reaching the partnership's habitat goals for wildlife and rare species. Permanent conservation easement protection was pursued for ecologically important areas. Like public institutions, private landowners also benefit from our resources in managing their land. Minnesota Land Trust uses a published set of scientific criteria to choose the highest available cost:benefit for easement projects.

We reviewed scientific data sets during the course of our project development including areas of significant biodiversity as mapped by DNR's Minnesota Biological Survey (MBS), and Element Occurrence Records (EORs) as mapped by DNR's Minnesota Natural Heritage Information System (NHIS), as well as review and consult with landowners, land managers, and other practitioners.

How did the program address habitats of significant value for wildlife species of greatest conservation need, threatened or endangered species, and/or list targeted species?

Many of our completed sites are ranked highly for having examples of high quality natural communities and concentrations of rare species, as mapped by DNR's Minnesota Biological Survey (MBS) and Element Occurrence Records (EORs) as mapped by DNR's Natural Heritage Information Service (NHIS). The ASP ecoregion is known to provide home to some 115 state-listed plants and animals, the most diverse ecological subsection (in terms of rare species) in the state. We are compelled to ensure the long-term viability of listed species and wildlife deemed Species in Greatest Conservation Need (SGCN) is ensured. This work provided a major step in that direction.

We completed ecological restoration and/or enhancement (R/E) on 13 parcels that were mapped as sites of significant biodiversity by MBS.

- GRG - Crane Meadows NWR
- GRG - Belle Prairie County Park
- GRG - Carlos Avery WMA Phase 4
- GRG - Wild Rice Phase 2
- GRG - Sherburne NWR Phase 3
- GRG - Sand Dunes State Forest Phase 2
- GRG - Talahi Woods
- GRG - Bridgeview Park Reserve
- ACD - Boot Lake SNA
- ACD - Rum River Revetments
- ICP - Becklin Homestead WMA
- NWTF - Buckhorn Lake WMA
- NWTF - Ruff-Nik WMA

We completed R/E on SGCN priority habitats identified for the ASP ecoregion in the Minnesota Wildlife Action Plan (WAP), on 10 parcels:

- GRG - Bridgeview Park Reserve
- GRG - Blaine Wetland Sanctuary South Phase 2
- GRG - Crane Meadows NWR
- GRG - Sherburne NWR Phase 3
- GRG - Sand Dunes State Forest Phase 2
- ACD - Kern Conservation Easement
- ICP - Becklin Homestead WMA and County Park
- NWTF - Buckhorn Lake WMA
- NWTF - Sponsa WMA
- NWTF - Ruff-Nik WMA

A total of 10 sites had at least one mapped NHIS EOR record. Three sites had EORs for more than 10 different species, and one site had mapped EORs for more than 20 different species. A total of 43 different species were mapped as EORs over our full suite of 17 sites.

How did the program use science-based targeting that leveraged or expanded corridors and complexes, reduced fragmentation, or protected areas in the MN County Biological Survey.

We completed R/E on 17 parcels, each one improving habitat on either habitat complex or habitat corridors.

We completed R/E on 12 parcels in HABITAT COMPLEXES:

GRG - Crane Meadows NWR
GRG - Carlos Avery WMA Phase 4
GRG - Mickelson Easement Rum River Floodplain
GRG - Sherburne NWR Phase 3
GRG- Sand Dunes State Forest Phase 2
GRG - Wild Rice Phase 2
ACD - Boot Lake SNA
ACD - Rum River Revetments
ICP - Becklin Homestead WMA and County Park
NWTF - Buckhorn Lake WMA
NWTF - Ruff-Nik WMA
NWTF - Sponsa WMA

We completed R/E on five parcels in HABITAT CORRIDORS:

GRG - Bridgeview Park Reserve
GRG - Talahi Woods
GRG - Blaine Wetland Sanctuary South Phase 2
GRG - Belle Prairie Park
ACD - Kern Conservation Easement

Explain Partners, Supporters, & Opposition

The ASP Partnership includes many government units and additional NGOs beyond the direct recipients, strengthening our partnership and outreach. We continued with our track record of success entering into agreements for R/E projects with state, county, city, federal, and private landowners, and engaging stakeholders of public lands and waters. Engaging in R/E projects built working relationships between direct recipients and numerous other partners and stakeholders, leading to expanded project lists and partnerships in future ASP phases for all recipients, particularly ACD.

Over 20 volunteers including those from Patagonia, St.Cloud State University, South East St. Cloud Neighborhood Preservation Coalition, and 77 Minnesota Public Radio volunteers volunteered at GRG- Talahi Woods. For Rum River Revetments, ACD conducted two rounds of landowner outreach.

At the request of local stakeholder group, MnDNR reconvened a multi-year second public input process to review their Sand Dunes SF plan, delaying and reducing the project

Exceptional challenges, expectations, failures, opportunities, or unique aspects of program

Covid 19 pandemic led to site accessibility restrictions, and extended reduction in burn crew activity.

What other fund may contribute to this program?

- N/A

What is the plan to sustain and/or maintain this work after the Outdoor Heritage Funds are expended?

Site-specific resource management plans were utilized to guide effective long-term management of targeted habitats/species. All land managers associated with sites included in this proposal have committed to the long-term maintenance of these habitat improvements in line with prescribed actions. A principle goal of our activities is

accelerate enhancement/restoration of respective sites and bring them to a point where on-going management costs are diminished and the resource can be more cost-effectively maintained over time.

The ASP Partnership is committed to working with local, state, federal, and private landowners, and conservation organizations in an on-going basis to identify and procure financial resources for maintaining these improvements as needed, bring volunteers to bear, and otherwise assist in reducing the financial and capacity burden in the face of fiscal constraints.

Actions to Maintain Project Outcomes

Year	Source of Funds	Step 1	Step 2	Step 3
2025 ACD	Anoka SWCD Agriculture Preserve County funds	Spot Check	Re-Treatment	-
2025 GRG	GRG in-kind, Landowners	Assessment	Appropriate Maintenance Activities	Corrective Actions
2025	NWTF	Monitoring every 2-3 years	Land manager engagement	Spot Treatment
2025	Isanti County Parks	Monitoring and Assessment	Spot Treatment	Prescribed burn

Budget

Grand Totals Across All Partnerships

Item	Requested	AP Amount	Spent	Antic. Leverage	Received Leverage	Leverage Source	Original Total	Final Total
Personnel	\$165,900	\$203,700	\$202,500	\$70,600	\$88,000	ACD, Kern Conservation Easement Fund, Private Landowners, USFWS, Sherburne County, Morrison County, Volunteers	\$236,500	\$290,500
Contracts	\$965,800	\$873,500	\$873,400	\$10,700	\$12,500	Kern Conservation Easement Fund, City of Blaine, Federal	\$976,500	\$885,900
Fee Acquisition w/ PILT	-	-	-	\$141,000	\$141,100	-, Outdoor Recreation Grant, Isanti County, Capable Partners, Isanti County Sportsman's Club, Isanti County MDHA	\$141,000	\$141,100
Fee Acquisition w/o PILT	-	-	-	-	-	-	-	-
Easement Acquisition	-	-	-	-	-	-	-	-
Easement Stewardship	-	-	-	-	-	-	-	-
Travel	\$12,800	\$13,600	\$12,300	-	-	-	\$12,800	\$12,300
Professional Services	-	-	-	-	-	-	-	-
Direct Support Services	\$21,800	\$21,800	\$21,800	\$11,800	\$11,800	-, Great River Greening	\$33,600	\$33,600
DNR Land Acquisition Costs	-	-	-	-	-	-	-	-
Capital Equipment	-	-	-	-	-	-	-	-
Other Equipment/Tools	\$13,700	\$12,700	\$11,800	\$200	-	-	\$13,900	\$11,800
Supplies/Materials	\$28,000	\$82,700	\$82,800	\$4,400	\$11,800	ACD, Kern Conservation Easement Fund, Private Landowners, Out Back Nursery	\$32,400	\$94,600
DNR IDP	-	-	-	-	-	-	-	-
Grand Total	\$1,208,000	\$1,208,000	\$1,204,600	\$238,700	\$265,200	-	\$1,446,700	\$1,469,800

Partner: Anoka Conservation District

Totals

Item	Requested	AP Amount	Spent	Antic. Leverage	Received Leverage	Leverage Source	Original Total	Final Total
Personnel	\$28,500	\$60,100	\$61,100	\$2,800	\$11,200	ACD, Kern Conservation Easement Fund, Private Landowners	\$31,300	\$72,300
Contracts	\$34,500	\$14,200	\$14,100	\$5,700	\$500	Kern Conservation Easement Fund	\$40,200	\$14,600
Fee Acquisition w/ PILT	-	-	-	-	-	-	-	-
Fee Acquisition w/o PILT	-	-	-	-	-	-	-	-
Easement Acquisition	-	-	-	-	-	-	-	-
Easement Stewardship	-	-	-	-	-	-	-	-
Travel	-	-	-	-	-	-	-	-
Professional Services	-	-	-	-	-	-	-	-
Direct Support Services	-	-	-	-	-	-	-	-
DNR Land Acquisition Costs	-	-	-	-	-	-	-	-
Capital Equipment	-	-	-	-	-	-	-	-
Other Equipment/Tools	\$2,000	\$2,500	\$1,600	\$200	-	-	\$2,200	\$1,600
Supplies/Materials	\$28,000	\$16,200	\$16,200	\$4,400	\$11,600	ACD, Kern Conservation Easement Fund, Private Landowners	\$32,400	\$27,800
DNR IDP	-	-	-	-	-	-	-	-
Grand Total	\$93,000	\$93,000	\$93,000	\$13,100	\$23,300	-	\$106,100	\$116,300

Personnel

Position	Annual FTE	Years Working	Funding Request	Antic. Leverage	Leverage Source	Total
ACD Personnel	0.25	4.0	\$61,100	\$11,200	ACD, Kern Conservation Easement Fund, Private Landowners	\$72,300

Partner: Great River Greening

Totals

Item	Requested	AP Amount	Spent	Antic. Leverage	Received Leverage	Leverage Source	Original Total	Final Total
Personnel	\$127,400	\$132,100	\$131,400	\$67,800	\$76,800	USFWS, Sherburne County, Morrison County, Volunteers	\$195,200	\$208,200
Contracts	\$653,300	\$581,800	\$581,300	-	\$12,000	City of Blaine, Federal	\$653,300	\$593,300
Fee Acquisition w/ PILT	-	-	-	-	-	-	-	-
Fee Acquisition w/o PILT	-	-	-	-	-	-	-	-
Easement Acquisition	-	-	-	-	-	-	-	-
Easement Stewardship	-	-	-	-	-	-	-	-
Travel	\$8,800	\$10,600	\$11,100	-	-	-	\$8,800	\$11,100
Professional Services	-	-	-	-	-	-	-	-
Direct Support Services	\$11,800	\$11,800	\$11,800	\$11,800	\$11,800	Great River Greening	\$23,600	\$23,600
DNR Land Acquisition Costs	-	-	-	-	-	-	-	-
Capital Equipment	-	-	-	-	-	-	-	-
Other Equipment/Tools	\$11,700	\$10,200	\$10,200	-	-	-	\$11,700	\$10,200
Supplies/Materials	-	\$66,500	\$66,600	-	\$200	Out Back Nursery	-	\$66,800
DNR IDP	-	-	-	-	-	-	-	-
Grand Total	\$813,000	\$813,000	\$812,400	\$79,600	\$100,800	-	\$892,600	\$913,200

Personnel

Position	Annual FTE	Years Working	Funding Request	Antic. Leverage	Leverage Source	Total
GRG Personnel	0.3	6.0	\$131,400	\$76,800	USFWS, Sherburne County, Morrison County, Volunteers	\$208,200

Partner: Isanti County Parks

Totals

Item	Requested	AP Amount	Spent	Antic. Leverage	Received Leverage	Leverage Source	Original Total	Final Total
Personnel	-	-	-	-	-	-	-	-
Contracts	\$25,000	\$25,000	\$25,000	\$5,000	-	-	\$30,000	\$25,000
Fee Acquisition w/ PILT	-	-	-	\$141,000	\$141,100	Outdoor Recreation Grant, Isanti County, Capable Partners, Isanti County Sportsman's Club, Isanti County MDHA	\$141,000	\$141,100
Fee Acquisition w/o PILT	-	-	-	-	-	-	-	-
Easement Acquisition	-	-	-	-	-	-	-	-
Easement Stewardship	-	-	-	-	-	-	-	-
Travel	-	-	-	-	-	-	-	-
Professional Services	-	-	-	-	-	-	-	-
Direct Support Services	-	-	-	-	-	-	-	-
DNR Land Acquisition Costs	-	-	-	-	-	-	-	-
Capital Equipment	-	-	-	-	-	-	-	-
Other Equipment/Tools	-	-	-	-	-	-	-	-
Supplies/Materials	-	-	-	-	-	-	-	-
DNR IDP	-	-	-	-	-	-	-	-
Grand Total	\$25,000	\$25,000	\$25,000	\$146,000	\$141,100	-	\$171,000	\$166,100

Partner: National Wild Turkey Federation

Totals

Item	Requested	AP Amount	Spent	Antic. Leverage	Received Leverage	Leverage Source	Original Total	Final Total
Personnel	\$10,000	\$11,500	\$10,000	-	-	-	\$10,000	\$10,000
Contracts	\$253,000	\$252,500	\$253,000	-	-	-	\$253,000	\$253,000
Fee Acquisition w/ PILT	-	-	-	-	-	-	-	-
Fee Acquisition w/o PILT	-	-	-	-	-	-	-	-
Easement Acquisition	-	-	-	-	-	-	-	-
Easement Stewardship	-	-	-	-	-	-	-	-
Travel	\$4,000	\$3,000	\$1,200	-	-	-	\$4,000	\$1,200
Professional Services	-	-	-	-	-	-	-	-
Direct Support Services	\$10,000	\$10,000	\$10,000	-	-	-	\$10,000	\$10,000
DNR Land Acquisition Costs	-	-	-	-	-	-	-	-
Capital Equipment	-	-	-	-	-	-	-	-
Other Equipment/Tools	-	-	-	-	-	-	-	-
Supplies/Materials	-	-	-	-	-	-	-	-
DNR IDP	-	-	-	-	-	-	-	-
Grand Total	\$277,000	\$277,000	\$274,200	-	-	-	\$277,000	\$274,200

Personnel

Position	Annual FTE	Years Working	Funding Request	Antic. Leverage	Leverage Source	Total
NWTF Personnel	6.0	0.03	\$10,000	-	-	\$10,000

Direct Support Services

How did you determine which portions of the Direct Support Services of your shared support services is direct to this program?

Greening - We estimated this amount at roughly 1.5% of Greening's portion of the grant. By calculating support services as a percent of direct expenses for Greening and estimating that 4% of direct expenses were required for this grant.

NWTF - Our Direct Support Services includes the costs of GIS support, supervisory staff, accounting staff, and marketing/outreach programs directly related to administering this grant.

Explain any budget challenges or successes:

GRG - Blaine Wetland Sanctuary South is a large project originally spanning only ASP5 and ASP6. When contractor prices came in over estimate, the project then included funds from ASP4 and ENRTF ML2017. Other GRG ASP4 projects came in under budget, and funds were able to be shifted.

Total Revenue: \$0

Revenue Spent: \$0

Revenue Balance: \$0

Of the money disclosed above, what are the appropriate uses of the money:

- E. This is not applicable as there was no revenue generated.

Output Tables

Acres by Resource Type (Table 1)

Type	Wetland (AP)	Wetland (Final)	Prairie (AP)	Prairie (Final)	Forest (AP)	Forest (Final)	Habitat (AP)	Habitat (Final)	Total Acres (AP)	Total Acres (Final)
Restore	0	0	0	0	0	0	7	7	7	7
Protect in Fee with State PILT Liability	0	0	0	0	0	0	0	0	0	0
Protect in Fee w/o State PILT Liability	0	0	0	0	0	0	0	0	0	0
Protect in Easement	0	0	0	0	0	0	0	0	0	0
Enhance	176	240	510	717	223	931	1	1	910	1,889
Total	176	240	510	717	223	931	8	8	917	1,896

How many of these Prairie acres are Native Prairie? (Table 1b)

Type	Native Prairie (AP)	Native Prairie (Final)
Restore	0	0
Protect in Fee with State PILT Liability	0	0
Protect in Fee w/o State PILT Liability	0	0
Protect in Easement	0	0
Enhance	114	78
Total	114	78

Total Requested Funding by Resource Type (Table 2)

Type	Wetland (AP)	Wetland (Final)	Prairie (AP)	Prairie (Final)	Forest (AP)	Forest (Final)	Habitat (AP)	Habitat (Final)	Total Funding (AP)	Total Funding (Final)
Restore	-	-	-	-	-	-	\$25,000	\$25,000	\$25,000	\$25,000
Protect in Fee with State PILT Liability	-	-	-	-	-	-	-	-	-	-
Protect in Fee w/o State PILT Liability	-	-	-	-	-	-	-	-	-	-
Protect in Easement	-	-	-	-	-	-	-	-	-	-
Enhance	\$196,000	\$156,800	\$572,800	\$471,000	\$364,600	\$501,900	\$49,600	\$49,900	\$1,183,000	\$1,179,600
Total	\$196,000	\$156,800	\$572,800	\$471,000	\$364,600	\$501,900	\$74,600	\$74,900	\$1,208,000	\$1,204,600

Acres within each Ecological Section (Table 3)

Type	Metro / Urban (AP)	Metro / Urban (Final)	Forest / Prairie (AP)	Forest / Prairie (Final)	SE Forest (AP)	SE Forest (Final)	Prairie (AP)	Prairie (Final)	N. Forest (AP)	N. Forest (Final)	Total (AP)	Total (Final)
Restore	7	7	0	0	0	0	0	0	0	0	7	7
Protect in Fee with State PILT Liability	0	0	0	0	0	0	0	0	0	0	0	0
Protect in	0	0	0	0	0	0	0	0	0	0	0	0

Fee w/o State PILT Liability												
Protect in Easement	0	0	0	0	0	0	0	0	0	0	0	0
Enhance	718	883	192	354	0	0	0	0	0	652	910	1,889
Total	725	890	192	354	0	0	0	0	0	652	917	1,896

Total Requested Funding within each Ecological Section (Table 4)

Type	Metro/ Urban (AP)	Metro/ Urban (Final)	Forest / Prairie (AP)	Forest / Prairie (Final)	SE Fores t (AP)	SE Fores t (Final)	Prairi e (AP)	Prairi e (Final)	N. Fores t (AP)	N. Forest (Final)	Total (AP)	Total (Final)
Restore	\$25,000	\$25,000	-	-	-	-	-	-	-	-	\$25,000	\$25,000
Protect in Fee with State PILT Liability	-	-	-	-	-	-	-	-	-	-	-	-
Protect in Fee w/o State PILT Liability	-	-	-	-	-	-	-	-	-	-	-	-
Protect in Easemen t	-	-	-	-	-	-	-	-	-	-	-	-
Enhance	\$905,70 0	\$746,20 0	\$277,30 0	\$334,80 0	-	-	-	-	-	\$98,60 0	\$1,183,00 0	\$1,179,60 0
Total	\$930,70 0	\$771,20 0	\$277,30 0	\$334,80 0	-	-	-	-	-	\$98,60 0	\$1,208,00 0	\$1,204,60 0

Target Lake/Stream/River Feet or Miles

1.2 miles

Outcomes

Programs in forest-prairie transition region:

- Improved aquatic habitat indicators ~ *Ecological monitoring, data measured against DNR established norms and OHC protocols, and community engagement in long-term maintenance and monitoring activities.*
- Wetland and upland complexes will consist of native prairies, restored prairies, quality grasslands, and restored shallow lakes and wetlands ~ *Ecological monitoring, data measured against DNR established norms and OHC protocols, and community engagement in long-term maintenance and monitoring activities.*

Programs in metropolitan urbanizing region:

- Core areas protected with highly biologically diverse wetlands and plant communities, including native prairie, Big Woods, and oak savanna ~ *Ecological monitoring, data measured against DNR established norms and OHC protocols, and community engagement in long-term maintenance and monitoring activities.*

Parcels

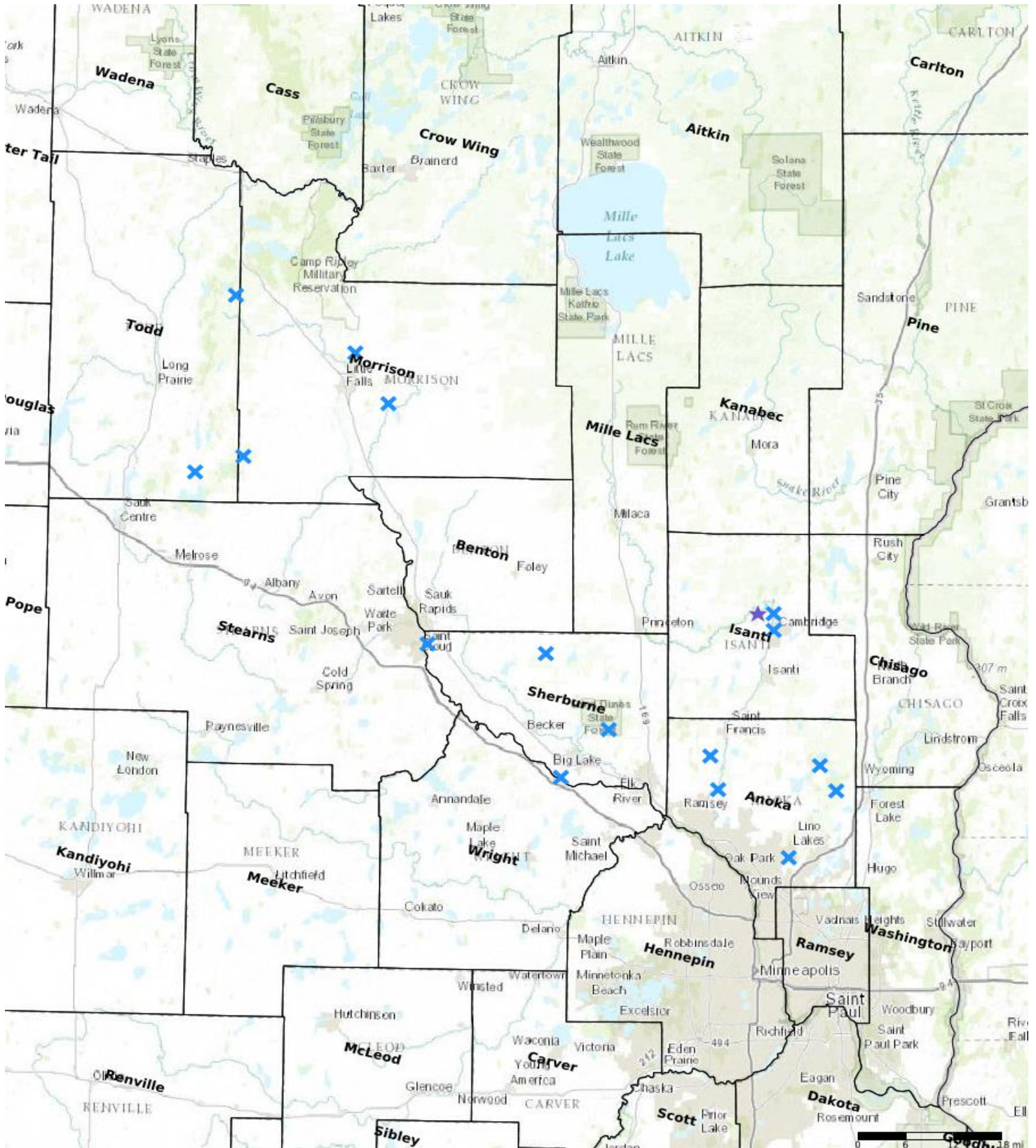
Sign-up Criteria?

No

Restore / Enhance Parcels

Name	County	TRDS	Acres	Est Cost	Existing Protection
Anoka SWCD - Kern Ecological Restoration	Anoka	03325213	42	\$19,600	Yes
Anoka SWCD - Boot Lake SNA	Anoka	03322220	26	\$23,500	Yes
GRG - Blaine Wetland Sanctuary Phase 2	Anoka	03123215	17	\$30,900	Yes
Anoka SWCD - Rum River Revetments	Anoka	03224206	1	\$49,900	Yes
GRG - Carlos Avery Phase 4	Anoka	03222203	39	\$72,000	Yes
Isanti CP - Becklin Homestead WMA and County Park	Isanti	03624224	8	\$25,000	Yes
GRG - Mickelson Floodplain	Isanti	03623220	13	\$55,600	Yes
GRG - Wild Rice Restoration - Phase 2	Isanti	03623232	187	\$97,400	Yes
GRG - Belle Prairie Corrective Actions	Morrison	04132214	1	\$33,700	Yes
GRG - Crane Meadows NWR	Morrison	04031219	157	\$116,800	Yes
NWTF - Sponsa WMA	Morrison	12831231	110	\$98,000	Yes
GRG - Sand Dunes State Forest - Phase 2	Sherburne	03427235	155	\$57,500	Yes
GRG - Talahi Woods	Sherburne	03531212	23	\$99,000	Yes
GRG - Bridgeview Park Reserve	Sherburne	03328235	30	\$87,000	Yes
GRG - Sherburne NWR - Phase 3	Sherburne	03528216	350	\$153,400	Yes
NWTF - Buckhorn Lake WMA	Todd	12732207	86	\$67,600	Yes
NWTF - Ruff-Nik	Todd	13132225	652	\$87,500	Yes

Parcel Map



- Protect in Easement
- ▲ Protect in Fee with PILT
- Protect in Fee W/O PILT
- ★ Restore
- ✕ Enhance
- + Other