



## Lessard-Sams Outdoor Heritage Council

DNR Grassland - Phase 8  
Laws of Minnesota 2016 Final Report

---

### General Information

**Date:** 11/03/2022

**Project Title:** DNR Grassland - Phase 8

**Funds Recommended:** \$3,983,000

**Legislative Citation:** ML 2016, Ch. 172, Art. 1, Sec. 2, Subd. 2(j)

**Appropriation Language:** \$3,983,000 the second year is to the commissioner of natural resources to accelerate restoration and enhancement of prairies, grasslands, and savannas on wildlife management areas, scientific and natural areas, native prairie bank land, and bluff prairies on state forest land in southeastern Minnesota. A list of proposed land restorations and enhancements must be provided as part of the required accomplishment plan.

### Manager Information

**Manager's Name:** Greg Hoch

**Title:**

**Organization:** DNR Wildlife

**Address:** 500 Lafayette Rd

**City:** St. paul, MN 55155

**Email:** greg.hoch@state.mn.us

**Office Number:** 651-259-5230

**Mobile Number:** 651-259-5230

**Fax Number:**

**Website:**

### Location Information

**County Location(s):** Olmsted, Wright, Stearns, Swift, Le Sueur, Murray, Lac qui Parle, Lyon, Cottonwood, Chippewa, Watonwan, Nobles, Jackson, Big Stone, Goodhue, Otter Tail, Houston, Washington, Dakota, Dodge, Douglas, Marshall, Yellow Medicine, Wabasha, Grant, Pipestone, Fillmore, Pope, Norman, Clearwater, Becker, Beltrami, Clay, Kittson, Mahnommen, Lake of the Woods, Pennington, Polk, Roseau, Red Lake, Wadena, Stevens, Benton, Morrison, Todd, Winona, Steele, Faribault, Redwood and Aitkin.

### Eco regions in which work will take place:

- Northern Forest
- Forest / Prairie Transition
- Prairie
- Metro / Urban

- Southeast Forest

**Activity types:**

- Restore
- Enhance

**Priority resources addressed by activity:**

- Prairie

**Narrative**

**Summary of Accomplishments**

We restored 2,081 acres of grassland and enhanced 42,425 acres of grassland for a total of 44,506 acres of wildlife habitat across 329 sites with these funds.

**Process & Methods**

We select projects using a number of criteria and reviews to make sure the DNR was spending these funds in the best and most productive ways. We can summarize our results in the following table.

| Project Type                              | Acres  | # Sites |
|---|--------|---------|
| Grassland Restoration                     | 2,085  | 63      |
| Prescribed Fire                           | 36,896 | 159     |
| Woody removal                             | 4,461  | 60      |
| interseed / diversity enhancement         | 500    | 27      |
| Conservation grazing infrastructure       | 120    | 1       |
| Prescribed Browsing-woody control (goats) | 299    | 9       |
| Herbaceous Invasive Control               | 145    | 10      |
| Sum                                       | 44,506 | 329     |

This appropriation involved the Roving Crews. These Crews allow the DNR to be very flexible. While they have a list of projects to work on, they can also respond fairly quickly if there's an enhancement opportunity shows up. For instance, a short dry period in a part of the state may allow them to conduct a late summer prescribed fire which was not in any of the original work plans. Roving Crews have begun experimenting with different burn seasons. Typically, we burn in the spring before the nesting season. However, this can stimulate the warm-season grasses and begin to crowd out forbs, lowering plant diversity. Burning in the late summer, after birds have fledged but with enough time for some late summer regrowth, has shown to increase both plant diversity as well as structural diversity in the habitat. Just as important, it can knock back the dominant grasses such as big bluestem and Indian grass just enough for forbs to express themselves the following year.

Although 44,506 acres appears to be a large number, we feel the actual acres benefitted may be much larger. We know nest predation of grassland birds is higher near woody vegetation and some birds just won't nest near woody veg. By removing trees, we are impacting both the footprint of where those trees were but also the surrounding grassland, up to a half mile from the project, where nest success should now be higher.

We installed grazing infrastructure on one site and used goats to browse undesirable and invasive woody plants. This will accomplish two goals. First, we will get good habitat work on our public lands. Second, its a way to further develop a working lands approach to land management and incorporate conservation work into the state's

agricultural economy. I have personally visited a number of public lands grazing sites in western Minnesota and have always been impressed with what I've seen. Although grazing is a summer activity, I've flushed a number of birds, both pheasants and songbirds, from these areas in the fall. Often the biggest benefit to grazing comes in the first couple years after grazing as the habitat is regrowing.

Although there is still much to learn, we have learned a lot in recent years about restoration techniques. We still use several methods for restoring prairie and there's probably no one perfect way of doing it. It's very clear to someone when they are walking through a recent restoration and an older restoration. Even if they can't identify every plant, the diversity people see is striking.

The DNR has traditionally focused on game species such as pheasants. However, there is more and more interest in pollinators and biodiversity. Fortunately, just about every study out there shows that management and restoration for pollinators and songbirds often creates the best habitat for game species. Diverse, healthy, productive habitat is good for a wide range of species. These projects can also increase the amount of carbon absorbed and stored by the plants and soils on these sites.

As we continue to use these funds, costs for projects will probably increase. In the early years of these funds, we completed a number of simpler or easier projects, the low-hanging fruit. Now we are left with the larger and more challenging projects. While they are good habitat projects, they will probably increase in costs over time.

In our budget table, we prorated our budget for individual projects by the acres accomplished. Staff funding was combined into one value. Identifying funding for each position would be an accounting challenge.

### **How did the program address habitats of significant value for wildlife species of greatest conservation need, threatened or endangered species, and/or list targeted species?**

Prairie habitats once covered one-third of the state but presently less than 2% remain. Native prairie, other grasslands that provides habitat for wildlife, and wetlands are key components of functional prairie landscapes that have the capacity to adapt to changing environmental conditions. While these appropriation only added 2,085 acres of grassland acres to the state through restoration, these funds enhanced a much larger area. Put in another fashion, we restored and enhanced 69.5 square miles with these funds. That's an area 8.3 by 8.3 miles in area. None of this work was targeted at a specific species of wildlife. We used that approach that diverse productive habitats benefit a wide variety of both game and non-game wildlife species as well as any threatened or endangered species. In our restorations, we use very diverse seed mixes. This is obviously beneficial for pollinators. However, all those insects also create a food base for a large number of wildlife species. The structural diversity all those plant species create in the habitat allow every species to find an ideal niche in the grass as well as accomodates different life history stages of wildlife.

### **How did the program use science-based targeting that leveraged or expanded corridors and complexes, reduced fragmentation, or protected areas in the MN County Biological Survey.**

The Minnesota Prairie Conservation Plan, the Prairie Pothole Joint Venture, and other state, regional, and national plans help us be strategic and targeted with our work. While this appropriation doesn't necessarily build on the habitat land base in those plans, it makes the existing grassland habitat as productive as possible for a wide range of wildlife species.

### **Explain Partners, Supporters, & Opposition**

For this particular appropriation, did not have any specific partners or opposition. We hope these activities increase our support within the agricultural community with our use of livestock as a management tool.

## **Exceptional challenges, expectations, failures, opportunities, or unique aspects of program**

The primary challenge was finishing this appropriation during the Covid period, with that came opportunities to build relationships with small businesses and contractors throughout the rural part of the state who became more familiar with what our goals and objectives are and how we like to do projects, thus increased efficiency and need less oversight as they become used to these types of projects. This helped show that enhancement dollars are good for local rural economies as well as habitat.

Dec 2020 an amendment approved reducing acres from 64,060 acres to 41,338 due to early years of this appropriation funded the NW Roving Crews that had plans for several multi-thousand acre burns in this part of the state, weather never worked out for us. The ML17 approp is anticipated to achieve over 145% of our acreage goal with two burn seasons yet to go.

## **What other fund may contribute to this program?**

- N/A

## **What is the plan to sustain and/or maintain this work after the Outdoor Heritage Funds are expended?**

In many cases, these efforts 'reset the clock' for our habitat work, such as tree removal projects that get an area back to a grassland state or projects that increase plant diversity. Once we get a WMA or SNA to that state, typical management / enhancement activities such as prescribed fire should be able to maintain the area in a desired state. In other cases, we may hit a site multiple times with fire over a couple of years to again get the site to where periodic fires or other enhancements maintain the diversity and productivity of the site in the long term.

## Budget

### Totals

| Item                       | Requested          | AP Amount          | Spent              | Antic. Leverage | Received Leverage | Leverage Source | Original Total     | Final Total        |
|----------------------------|--------------------|--------------------|--------------------|-----------------|-------------------|-----------------|--------------------|--------------------|
| Personnel                  | \$1,429,300        | \$1,421,500        | \$1,416,400        | -               | -                 | -               | \$1,429,300        | \$1,416,400        |
| Contracts                  | \$1,577,800        | \$1,143,800        | \$1,154,100        | -               | -                 | -               | \$1,577,800        | \$1,154,100        |
| Fee Acquisition w/ PILT    | -                  | -                  | -                  | -               | -                 | -               | -                  | -                  |
| Fee Acquisition w/o PILT   | -                  | -                  | -                  | -               | -                 | -               | -                  | -                  |
| Easement Acquisition       | -                  | -                  | -                  | -               | -                 | -               | -                  | -                  |
| Easement Stewardship       | -                  | -                  | -                  | -               | -                 | -               | -                  | -                  |
| Travel                     | \$454,200          | \$439,900          | \$413,400          | -               | -                 | -               | \$454,200          | \$413,400          |
| Professional Services      | -                  | -                  | -                  | -               | -                 | -               | -                  | -                  |
| Direct Support Services    | \$172,000          | \$172,000          | \$172,000          | -               | -                 | -               | \$172,000          | \$172,000          |
| DNR Land Acquisition Costs | -                  | -                  | -                  | -               | -                 | -               | -                  | -                  |
| Capital Equipment          | -                  | -                  | -                  | -               | -                 | -               | -                  | -                  |
| Other Equipment/Tools      | \$2,500            | \$4,300            | \$4,500            | -               | -                 | -               | \$2,500            | \$4,500            |
| Supplies/Materials         | \$347,200          | \$801,500          | \$774,500          | -               | -                 | -               | \$347,200          | \$774,500          |
| DNR IDP                    | -                  | -                  | -                  | -               | -                 | -               | -                  | -                  |
| <b>Grand Total</b>         | <b>\$3,983,000</b> | <b>\$3,983,000</b> | <b>\$3,934,900</b> | <b>-</b>        | <b>-</b>          | <b>-</b>        | <b>\$3,983,000</b> | <b>\$3,934,900</b> |

### Personnel

| Position                                   | Annual FTE | Years Working | Funding Request | Antic. Leverage | Leverage Source | Total       |
|--|------------|---------------|-----------------|-----------------|-----------------|-------------|
| SNA / Ecological and Water Resources (EWR) | 1.11       | 4.0           | \$305,000       | -               | -               | \$305,000   |
| WMA Roving Crew - Fish and Wildlife (FAW)  | 6.0        | 3.0           | \$1,111,400     | -               | -               | \$1,111,400 |

### Direct Support Services

**How did you determine which portions of the Direct Support Services of your shared support services is direct to this program?**

We used the standard DNR calculator.

**Explain any budget challenges or successes:**

We are usually able to spend almost the entire appropriation. This year we are returning more than usual. This is simply related to the slowdown during covid.

**Total Revenue:** \$0

**Revenue Spent:** \$0

**Revenue Balance:** \$0

**Of the money disclosed above, what are the appropriate uses of the money:**

- D. This is not applicable because the recipient is a state agency or department.

- E. This is not applicable as there was no revenue generated.

## Output Tables

### Acres by Resource Type (Table 1)

| Type                                     | Wetland (AP) | Wetland (Final) | Prairie (AP)  | Prairie (Final) | Forest (AP) | Forest (Final) | Habitat (AP) | Habitat (Final) | Total Acres (AP) | Total Acres (Final) |
|--|--------------|-----------------|---------------|-----------------|-------------|----------------|--------------|-----------------|------------------|---------------------|
| Restore                                  | 0            | 0               | 30            | 2,081           | 0           | 0              | 0            | 0               | 30               | 2,081               |
| Protect in Fee with State PILT Liability | 0            | 0               | 0             | 0               | 0           | 0              | 0            | 0               | 0                | 0                   |
| Protect in Fee w/o State PILT Liability  | 0            | 0               | 0             | 0               | 0           | 0              | 0            | 0               | 0                | 0                   |
| Protect in Easement                      | 0            | 0               | 0             | 0               | 0           | 0              | 0            | 0               | 0                | 0                   |
| Enhance                                  | 0            | 0               | 64,030        | 42,425          | 0           | 0              | 0            | 0               | 64,030           | 42,425              |
| <b>Total</b>                             | <b>0</b>     | <b>0</b>        | <b>64,060</b> | <b>44,506</b>   | <b>0</b>    | <b>0</b>       | <b>0</b>     | <b>0</b>        | <b>64,060</b>    | <b>44,506</b>       |

### How many of these Prairie acres are Native Prairie? (Table 1b)

| Type                                     | Native Prairie (AP) | Native Prairie (Final) |
|--|---------------------|------------------------|
| Restore                                  | 0                   | 900                    |
| Protect in Fee with State PILT Liability | 0                   | 0                      |
| Protect in Fee w/o State PILT Liability  | 0                   | 0                      |
| Protect in Easement                      | 0                   | 0                      |
| Enhance                                  | 0                   | 0                      |
| <b>Total</b>                             | <b>0</b>            | <b>900</b>             |

### Total Requested Funding by Resource Type (Table 2)

| Type                                     | Wetland (AP) | Wetland (Final) | Prairie (AP)       | Prairie (Final)    | Forest (AP) | Forest (Final) | Habitat (AP) | Habitat (Final) | Total Funding (AP) | Total Funding (Final) |
|--|--------------|-----------------|--------------------|--------------------|-------------|----------------|--------------|-----------------|--------------------|-----------------------|
| Restore                                  | -            | -               | \$59,500           | \$183,900          | -           | -              | -            | -               | \$59,500           | \$183,900             |
| Protect in Fee with State PILT Liability | -            | -               | -                  | -                  | -           | -              | -            | -               | -                  | -                     |
| Protect in Fee w/o State PILT Liability  | -            | -               | -                  | -                  | -           | -              | -            | -               | -                  | -                     |
| Protect in Easement                      | -            | -               | -                  | -                  | -           | -              | -            | -               | -                  | -                     |
| Enhance                                  | -            | -               | \$3,923,500        | \$3,751,000        | -           | -              | -            | -               | \$3,923,500        | \$3,751,000           |
| <b>Total</b>                             | <b>-</b>     | <b>-</b>        | <b>\$3,983,000</b> | <b>\$3,934,900</b> | <b>-</b>    | <b>-</b>       | <b>-</b>     | <b>-</b>        | <b>\$3,983,000</b> | <b>\$3,934,900</b>    |

### Acres within each Ecological Section (Table 3)

| Type                                     | Metro / Urban (AP) | Metro / Urban (Final) | Forest / Prairie (AP) | Forest / Prairie (Final) | SE Forest (AP) | SE Forest (Final) | Prairie (AP) | Prairie (Final) | N. Forest (AP) | N. Forest (Final) | Total (AP) | Total (Final) |
|--|--------------------|-----------------------|-----------------------|--------------------------|----------------|-------------------|--------------|-----------------|----------------|-------------------|------------|---------------|
| Restore                                  | 0                  | 9                     | 0                     | 900                      | 0              | 163               | 30           | 613             | 0              | 396               | 30         | 2,081         |
| Protect in Fee with State PILT Liability | 0                  | 0                     | 0                     | 0                        | 0              | 0                 | 0            | 0               | 0              | 0                 | 0          | 0             |
| Protect in                               | 0                  | 0                     | 0                     | 0                        | 0              | 0                 | 0            | 0               | 0              | 0                 | 0          | 0             |

|                                       |              |            |              |               |            |              |               |              |            |              |               |               |
|---------------------------------------|--------------|------------|--------------|---------------|------------|--------------|---------------|--------------|------------|--------------|---------------|---------------|
| Fee w/o<br>State<br>PILT<br>Liability |              |            |              |               |            |              |               |              |            |              |               |               |
| Protect in<br>Easement                | 0            | 0          | 0            | 0             | 0          | 0            | 0             | 0            | 0          | 0            | 0             | 0             |
| Enhance                               | 1,200        | 116        | 6,110        | 28,127        | 430        | 4,129        | 55,820        | 7,439        | 470        | 2,614        | 64,030        | 42,425        |
| <b>Total</b>                          | <b>1,200</b> | <b>125</b> | <b>6,110</b> | <b>29,027</b> | <b>430</b> | <b>4,292</b> | <b>55,850</b> | <b>8,052</b> | <b>470</b> | <b>3,010</b> | <b>64,060</b> | <b>44,506</b> |



## Total Requested Funding within each Ecological Section (Table 4)

| Type  | Metro/<br>Urban<br>(AP) | Metro/<br>Urban<br>(Final) | Forest /<br>Prairie<br>(AP) | Forest /<br>Prairie<br>(Final) | SE<br>Forest<br>(AP) | SE<br>Forest<br>(Final) | Prairie<br>(AP)    | Prairie<br>(Final) | N.<br>Forest<br>(AP) | N.<br>Forest<br>(Final) | Total<br>(AP)      | Total<br>(Final)   |
|---|-------------------------|----------------------------|-----------------------------|--------------------------------|----------------------|-------------------------|--------------------|--------------------|----------------------|-------------------------|--------------------|--------------------|
| Restore   | -                       | \$700                      | -                           | \$79,600                       | -                    | \$14,400                | \$59,500           | \$54,200           | -                    | \$35,000                | \$59,500           | \$183,900          |
| Protect<br>in Fee<br>with<br>State<br>PILT<br>Liabilit<br>y | -                       | -                          | -                           | -                              | -                    | -                       | -                  | -                  | -                    | -                       | -                  | -                  |
| Protect<br>in Fee<br>w/o<br>State<br>PILT<br>Liabilit<br>y  | -                       | -                          | -                           | -                              | -                    | -                       | -                  | -                  | -                    | -                       | -                  | -                  |
| Protect<br>in<br>Easeme<br>nt                               | -                       | -                          | -                           | -                              | -                    | -                       | -                  | -                  | -                    | -                       | -                  | -                  |
| Enhanc<br>e   | \$147,000               | \$10,300                   | \$331,500                   | \$2,486,800                    | \$89,500             | \$365,100               | \$3,294,400        | \$657,700          | \$61,100             | \$231,100               | \$3,923,500        | \$3,751,000        |
| <b>Total</b>  | <b>\$147,000</b>        | <b>\$11,000</b>            | <b>\$331,500</b>            | <b>\$2,566,400</b>             | <b>\$89,500</b>      | <b>\$379,500</b>        | <b>\$3,353,900</b> | <b>\$711,900</b>   | <b>\$61,100</b>      | <b>\$266,100</b>        | <b>\$3,983,000</b> | <b>\$3,934,900</b> |

### Target Lake/Stream/River Feet or Miles

## Outcomes

### Programs in forest-prairie transition region:

- Protected, restored, and enhanced nesting and migratory habitat for waterfowl, upland birds, and species of greatest conservation need ~ *Although we will not be conducting any specific monitoring on these sites, they will be included in the long-term surveys we do such as the August Roadside Survey, Prairie Chicken Survey, waterfowl surveys, etc. They may also be included in federal or regional surveys such as the Breeding Bird Survey, Waterfowl Breeding Population Survey, and others.*

### Programs in metropolitan urbanizing region:

- Core areas protected with highly biologically diverse wetlands and plant communities, including native prairie, Big Woods, and oak savanna ~ *Although we will not be conducting any specific monitoring on these sites, they will be included in the long-term surveys we do such as the August Roadside Survey, Prairie Chicken Survey, waterfowl surveys, etc. They may also be included in federal or regional surveys such as the Breeding Bird Survey, Waterfowl Breeding Population Survey, and others.*

### Programs in the northern forest region:

- Healthy populations of endangered, threatened, and special concern species as well as more common species ~ *Although we will not be conducting any specific monitoring on these sites, they will be included in the long-term surveys we do such as the August Roadside Survey, Prairie Chicken Survey, waterfowl surveys, etc. They may also be included in federal or regional surveys such as the Breeding Bird Survey, Waterfowl Breeding Population Survey, and others.*

### **Programs in prairie region:**

- Restored and enhanced upland habitats ~ *Although we will not be conducting any specific monitoring on these sites, they will be included in the long-term surveys we do such as the August Roadside Survey, Prairie Chicken Survey, waterfowl surveys, etc. They may also be included in federal or regional surveys such as the Breeding Bird Survey, Waterfowl Breeding Population Survey, and others.*

### **Programs in southeast forest region:**

- Remnant goat prairies are perpetually protected ~ *Although we will not be conducting any specific monitoring on these sites, they will be included in the long-term surveys we do such as the August Roadside Survey, Prairie Chicken Survey, waterfowl surveys, etc. They may also be included in federal or regional surveys such as the Breeding Bird Survey, Waterfowl Breeding Population Survey, and others.*

## Parcels

### Sign-up Criteria?

No

### Restore / Enhance Parcels

| Name                     | County     | TRDS      | Acres | Est Cost | Existing Protection |
|--------------------------|------------|-----------|-------|----------|---------------------|
| Gun Lake WMA             | Aitkin     | 04825204  | 145   | \$12,820 | Yes                 |
| Coburn WMA               | Becker     | 14242205  | 400   | \$35,365 | Yes                 |
| Hubble Pond WMA          | Becker     | 13939220  | 11    | \$972    | Yes                 |
| Hubbble Pond WMA         | Becker     | 13939208  | 35    | \$3,094  | Yes                 |
| Teiken-Dalve WMA         | Becker     | 14241234  | 13    | \$1,149  | Yes                 |
| Hubble Pond WMA          | Becker     | 13939218  | 21    | \$1,856  | Yes                 |
| Wolfe Trail WMA          | Beltrami   | 15538219  | 512   | \$45,268 | Yes                 |
| Wolf Trail WMA           | Beltrami   | 15537217  | 585   | \$51,722 | Yes                 |
| Benville WMA             | Beltrami   | 15638220  | 160   | \$14,146 | Yes                 |
| Red Lake WMA             | Beltrami   | 15836209  | 339   | \$29,972 | Yes                 |
| Wolfe Trail WMA          | Beltrami   | 15538224  | 700   | \$61,889 | Yes                 |
| Glendorado WMA           | Benton     | 03628226  | 16    | \$1,414  | Yes                 |
| Michaelson WMA           | Benton     | 03731205  | 35    | \$3,094  | Yes                 |
| Bonanza Prairie SNA      | Big Stone  | 12348220  | 55    | \$4,862  | Yes                 |
| Lac qui Parle WMA        | Chippewa   | 119420234 | 4     | \$353    | Yes                 |
| Lac qui Parle WMA        | Chippewa   | 119420234 | 16    | \$1,414  | Yes                 |
| Jeral WMA                | Clay       | 14045205  | 70    | \$6,188  | Yes                 |
| Mosquito Creek WMA       | Clearwater | 14637231  | 48    | \$4,243  | Yes                 |
| Old Red Lake Trail WMA   | Clearwater | 14837214  | 34    | \$3,006  | Yes                 |
| Old Red Lake Trail WMA   | Clearwater | 14837224  | 29    | \$2,564  | Yes                 |
| Mosquito Creek WMA       | Clearwater | 14638236  | 20    | \$1,768  | Yes                 |
| Mosquito Creek WMA       | Clearwater | 14637231  | 32    | \$2,829  | Yes                 |
| Mosquito Creek WMA       | Clearwater | 14637231  | 48    | \$4,243  | Yes                 |
| Old Red Lake Trail WMA   | Clearwater | 14837224  | 29    | \$2,564  | Yes                 |
| Old Red Lake Trail WMA   | Clearwater | 14837224  | 10    | \$884    | Yes                 |
| Mosquito Creek WMA       | Clearwater | 14637218  | 20    | \$1,768  | Yes                 |
| Mosquito Creek WMA       | Clearwater | 14637231  | 27    | \$2,387  | Yes                 |
| Mosquito Creek WMA       | Clearwater | 14637231  | 27    | \$2,387  | Yes                 |
| Mosquito Creek WMA       | Clearwater | 14637230  | 160   | \$14,146 | Yes                 |
| Mosquito Creek WMA       | Clearwater | 14637231  | 27    | \$2,387  | Yes                 |
| Old Red Lake Trail WMA   | Clearwater | 14837224  | 20    | \$1,768  | Yes                 |
| Mosquito Creek WMA       | Clearwater | 14637231  | 48    | \$4,243  | Yes                 |
| Carter WMA               | Clearwater | 14838219  | 10    | \$884    | Yes                 |
| Old Red Lake Trail WMA   | Clearwater | 14837223  | 32    | \$2,829  | Yes                 |
| String Lakes WMA         | Cottonwood | 105360228 | 149   | \$13,173 | Yes                 |
| String Lakes WMA         | Cottonwood | 105360228 | 133   | \$11,759 | Yes                 |
| Hastings Sand Coulee SNA | Dakota     | 11417202  | 11    | \$972    | Yes                 |
| Iron Horse Prairie SNA   | Dodge      | 10517227  | 11    | \$972    | Yes                 |
| Pheasants Forever WMA    | Dodge      | 107170225 | 5     | \$442    | Yes                 |
| Lund 2 NPB               | Douglas    | 13040202  | 70    | \$6,188  | Yes                 |
| Walnut Lake WMA          | Faribault  | 10225211  | 98    | \$8,664  | Yes                 |
| William Pease WMA        | Fillmore   | 10411207  | 11    | \$972    | Yes                 |
| Beaver Creek WMA         | Fillmore   | 10113221  | 139   | \$12,289 | Yes                 |
| Seven Springs WMA        | Fillmore   | 10212216  | 45    | \$3,978  | Yes                 |
| Upper Iowa River WMA     | Fillmore   | 10113231  | 27    | \$2,387  | Yes                 |
| Rush Creek WMA           | Fillmore   | 10408212  | 54    | \$4,774  | Yes                 |
| Choice WMA               | Fillmore   | 10208211  | 86    | \$7,603  | Yes                 |
| Goethite WMA             | Fillmore   | 10213223  | 32    | \$2,829  | Yes                 |
| Beaver Creek WMA         | Fillmore   | 10113228  | 46    | \$4,067  | Yes                 |

|                                   |          |          |     |          |     |
|-----------------------------------|----------|----------|-----|----------|-----|
| Beaver Creek WMA                  | Fillmore | 10113221 | 24  | \$2,121  | Yes |
| Cherry Grove WMA                  | Fillmore | 10112203 | 23  | \$2,033  | Yes |
| Choice WMA                        | Fillmore | 10208201 | 95  | \$8,399  | Yes |
| Choice WMA                        | Fillmore | 10208214 | 83  | \$7,338  | Yes |
| Spring Valley WMA                 | Fillmore | 10313208 | 17  | \$1,503  | Yes |
| Choice WMA                        | Fillmore | 10208201 | 45  | \$3,978  | Yes |
| Seven Springs WMA                 | Fillmore | 10212216 | 10  | \$884    | Yes |
| Nosek WMA                         | Fillmore | 10113224 | 57  | \$5,039  | Yes |
| Rush Creek Woods WMA              | Fillmore | 10408212 | 11  | \$972    | Yes |
| Rushford Sand Barrens SNA         | Fillmore | 10408228 | 17  | \$1,503  | Yes |
| RJD State Forest-Rushford Unit    | Fillmore | 10408213 | 25  | \$2,210  | Yes |
| RJD State Forest-Rushford Unit    | Fillmore | 10408213 | 26  | \$2,298  | Yes |
| RJD State Forest-Rushford Unit    | Fillmore | 10408213 | 4   | \$353    | Yes |
| RJD State Forest-Rushford Unit    | Fillmore | 10408225 | 20  | \$1,768  | Yes |
| Hvoslef WMA                       | Fillmore | 10209226 | 36  | \$3,182  | Yes |
| Chosen Valley WMA                 | Fillmore | 10412206 | 35  | \$3,094  | Yes |
| Choice WMA                        | Fillmore | 10208203 | 60  | \$5,304  | Yes |
| Choice WMA                        | Fillmore | 10208202 | 45  | \$3,978  | Yes |
| Hvoslef WMA                       | Fillmore | 10209226 | 15  | \$1,326  | Yes |
| Beaver Creek WMA                  | Fillmore | 10113228 | 25  | \$2,210  | Yes |
| Goethite WMA                      | Fillmore | 10213223 | 40  | \$3,536  | Yes |
| Spring Valley WMA                 | Fillmore | 10313208 | 23  | \$2,033  | Yes |
| Beaver Creek Tr 19 WMA            | Fillmore | 10113221 | 4   | \$353    | Yes |
| Chosen Valley WMA                 | Fillmore | 10412206 | 13  | \$1,149  | Yes |
| River Terrace Prairie SNA         | Goodhue  | 11217201 | 6   | \$530    | Yes |
| Spring Creek Prairie SNA          | Goodhue  | 11315234 | 50  | \$4,420  | Yes |
| Warsaw WMA                        | Goodhue  | 11118208 | 18  | \$1,591  | Yes |
| River Terrace Prairie SNA         | Goodhue  | 11217201 | 34  | \$3,006  | Yes |
| Cannon River Turtle Preserve SNA  | Goodhue  | 11316224 | 8   | \$707    | Yes |
| Cannon River Turtle Preserve SNA  | Goodhue  | 11316224 | 4   | \$353    | Yes |
| Hoffman WMA                       | Goodhue  | 11215208 | 8   | \$707    | Yes |
| Cannon River Turtle Preserve SNA  | Goodhue  | 11316224 | 1   | \$88     | Yes |
| Isaacson WMA                      | Grant    | 12841219 | 41  | \$3,624  | Yes |
| Olsen NPB                         | Grant    | 12841206 | 15  | \$1,326  | Yes |
| Barret WMA                        | Grant    | 12841230 | 393 | \$34,746 | Yes |
| Rush Creek Woods WMA              | Houston  | 10407207 | 16  | \$1,414  | Yes |
| Yucatan WMA                       | Houston  | 10307230 | 3   | \$265    | Yes |
| RJD State Forest-Jefferson Unit   | Houston  | 10104229 | 12  | \$1,060  | Yes |
| RJD State Forest-Jefferson Unit   | Houston  | 10105224 | 42  | \$3,713  | Yes |
| RJD State Forest-Loony Creek Unit | Houston  | 10406204 | 51  | \$4,509  | Yes |
| Loony Creek AMA                   | Houston  | 10406202 | 20  | \$1,768  | Yes |
| Yucatan WMA                       | Houston  | 10307219 | 4   | \$353    | Yes |
| Ferndale Ridge WMA                | Houston  | 10407232 | 22  | \$1,945  | Yes |
| Ferndale Ridge WMA                | Houston  | 10408232 | 21  | \$1,856  | Yes |
| Yucatan WMA                       | Houston  | 10307219 | 22  | \$1,945  | Yes |
| Root River WMA                    | Houston  | 10404229 | 12  | \$1,060  | Yes |
| Brownsville 26-1 NPB              | Houston  | 10204226 | 27  | \$2,387  | Yes |
| RJD State Forest-Peterson Unit    | Houston  | 10408219 | 26  | \$2,298  | Yes |
| RJD State Forest-Peterson Unit    | Houston  | 10408219 | 5   | \$442    | Yes |
| Yucatan WMA                       | Houston  | 10307219 | 13  | \$1,149  | Yes |
| RJD State Forest-Wetbark Unit     | Houston  | 10307214 | 3   | \$265    | Yes |
| Ferndale Ridge WMA                | Houston  | 10407229 | 20  | \$1,768  | Yes |
| Rush Creek WMA                    | Houston  | 10407207 | 10  | \$884    | Yes |
| Mound Prairie SNA                 | Houston  | 10405234 | 70  | \$6,188  | Yes |
| Mound Prairie SNA                 | Houston  | 10405234 | 55  | \$4,862  | Yes |
| Mound Prairie SNA                 | Houston  | 10405234 | 100 | \$8,841  | Yes |
| Brownsville 26-1 NPB              | Houston  | 10204226 | 13  | \$1,149  | Yes |
| Hokah 25-1 NPB                    | Houston  | 10405225 | 26  | \$2,298  | Yes |

|                               |                   |           |       |           |     |
|-------------------------------|-------------------|-----------|-------|-----------|-----|
| RJD State Forest-Wetbark Unit | Houston           | 10307214  | 41    | \$3,624   | Yes |
| Mound Prairie WMA             | Houston           | 10405227  | 17    | \$1,503   | Yes |
| Yucatan WMA                   | Houston           | 10307219  | 13    | \$1,149   | Yes |
| Belmont 5-1 NPB               | Jackson           | 10335205  | 1     | \$88      | Yes |
| Petersburg 27-1 NPB           | Jackson           | 10134227  | 6     | \$530     | Yes |
| Petersburg 26-1 NPB           | Jackson           | 10134226  | 38    | \$3,359   | Yes |
| Petersburg 26-1 NPB           | Jackson           | 10134226  | 3     | \$265     | Yes |
| Caribou WMA                   | Kittson           | 16346210  | 640   | \$56,585  | Yes |
| Devils Playground WMA         | Kittson           | 16046235  | 98    | \$8,664   | Yes |
| Halma WMA                     | Kittson           | 16046218  | 130   | \$11,493  | Yes |
| Beaches WMA                   | Kittson           | 16246207  | 876   | \$77,450  | Yes |
| Beaches WMA                   | Kittson           | 16145208  | 1,258 | \$111,224 | Yes |
| Caibou WMA                    | Kittson           | 16345209  | 938   | \$82,932  | Yes |
| Skull Lake WMA                | Kittson           | 16347214  | 28    | \$2,475   | Yes |
| Twin Lakes WMA                | Kittson           | 15945203  | 100   | \$8,841   | Yes |
| Caribou WMA                   | Kittson           | 16446226  | 1,280 | \$113,170 | Yes |
| Beaches Lake WMA              | Kittson           | 16246212  | 863   | \$76,301  | Yes |
| Skull Lake WMA                | Kittson           | 16347224  | 14    | \$1,237   | Yes |
| Skull Lake WMA                | Kittson           | 16347211  | 56    | \$4,951   | Yes |
| Twin Lakes WMA                | Kittson           | 15945216  | 327   | \$28,911  | Yes |
| Skull Lake WMA                | Kittson           | 16347212  | 524   | \$46,329  | Yes |
| Beaches Lake WMA              | Kittson           | 16245229  | 2,602 | \$230,053 | Yes |
| Caribou WMA                   | Kittson           | 16345217  | 1,230 | \$108,749 | Yes |
| Pelan WMA                     | Kittson           | 16045215  | 495   | \$43,764  | Yes |
| Lac qui Parle WMA             | Lac qui Parle     | 119430222 | 16    | \$1,414   | Yes |
| Lac qui Parle WMA             | Lac qui Parle     | 120440207 | 66    | \$5,835   | Yes |
| Carp WMA                      | Lake of the Woods | 15931216  | 670   | \$59,237  | Yes |
| Bur Oak WMA                   | Le Sueur          | 10925205  | 18    | \$1,591   | Yes |
| Grandview WMA                 | Lyon              | 112420218 | 16    | \$1,414   | Yes |
| Spring Creek WMA              | Mahnomen          | 14241207  | 270   | \$23,871  | Yes |
| Bejou WMA                     | Mahnomen          | 14642221  | 20    | \$1,768   | Yes |
| Vanose WMA                    | Mahnomen          | 14640230  | 33    | \$2,917   | Yes |
| Waubun WMA                    | Mahnomen          | 14342223  | 273   | \$24,137  | Yes |
| Warren Lake WMA               | Mahnomen          | 14541210  | 12    | \$1,060   | Yes |
| Warren Lake WMA               | Mahnomen          | 14541210  | 20    | \$1,768   | Yes |
| Bejou WMA                     | Mahnomen          | 14642228  | 15    | \$1,326   | Yes |
| Wambach WMA                   | Mahnomen          | 14542201  | 702   | \$62,066  | Yes |
| Vanose WMA                    | Mahnomen          | 14641230  | 446   | \$39,432  | Yes |
| Gregory WMA                   | Mahnomen          | 14641229  | 850   | \$75,152  | Yes |
| Waubun WMA                    | Mahnomen          | 14342223  | 120   | \$10,609  | Yes |
| Waubun WMA                    | Mahnomen          | 14342225  | 504   | \$44,560  | Yes |
| Bejou WMA                     | Mahnomen          | 14642229  | 8     | \$707     | Yes |
| Loncrace WMA                  | Mahnomen          | 14642224  | 94    | \$8,310   | Yes |
| Waubun WMA                    | Mahnomen          | 14342233  | 600   | \$53,048  | Yes |
| Island Lake WMA               | Mahnomen          | 14639201  | 12    | \$1,060   | Yes |
| Thief Lake WMA                | Marshall          | 15840222  | 35    | \$3,094   | Yes |
| Elm Lake WMA                  | Marshall          | 15542211  | 78    | \$6,896   | Yes |
| East Park WMA                 | Marshall          | 15844214  | 650   | \$57,469  | Yes |
| Thief Lake WMA                | Marshall          | 15840231  | 393   | \$34,746  | Yes |
| Thief Lake WMA                | Marshall          | 15841228  | 76    | \$6,719   | Yes |
| Thief Lake WMA                | Marshall          | 15841221  | 66    | \$5,835   | Yes |
| Thief Lake WMA                | Marshall          | 15842222  | 25    | \$2,210   | Yes |
| Elm Lake WMA                  | Marshall          | 15542211  | 73    | \$6,454   | Yes |
| Marsh Grove 36 NPB            | Marshall          | 15645236  | 125   | \$11,051  | Yes |
| Thief Lake WMA                | Marshall          | 15840234  | 31    | \$2,740   | Yes |
| Eckvoll WMA                   | Marshall          | 15640230  | 495   | \$43,764  | Yes |
| Sharp WMA                     | Marshall          | 15540217  | 161   | \$14,234  | Yes |

|                                |            |           |     |          |     |
|--------------------------------|------------|-----------|-----|----------|-----|
| Thief Lake WMA                 | Marshall   | 15842211  | 96  | \$8,487  | Yes |
| Elm Lake WMA                   | Marshall   | 15542211  | 79  | \$6,984  | Yes |
| Espelie WMA                    | Marshall   | 15539208  | 442 | \$39,079 | Yes |
| Thief Lake WMA                 | Marshall   | 15840233  | 206 | \$18,213 | Yes |
| Little Elk WMA                 | Morrison   | 13031219  | 2   | \$176    | Yes |
| Rice Area Sportsman's Club WMA | Morrison   | 03931214  | 2   | \$176    | Yes |
| Mud Lake WMA                   | Morrison   | 12931201  | 5   | \$442    | Yes |
| Beaver Creek WMA               | Murray     | 107410224 | 3   | \$265    | Yes |
| Lundblad Prairie SNA           | Murray     | 10541201  | 24  | \$2,121  | Yes |
| Budolfson WMA                  | Murray     | 10738219  | 21  | \$1,856  | Yes |
| Fulda WMA                      | Nobles     | 104400202 | 6   | \$530    | Yes |
| Moccasin WMA                   | Norman     | 14343226  | 13  | \$1,149  | Yes |
| Moccasin WMA                   | Norman     | 14343226  | 6   | \$530    | Yes |
| Ranum WMA                      | Norman     | 14643206  | 76  | \$6,719  | Yes |
| Sandpiper Prairie SNA          | Norman     | 14445233  | 38  | \$3,359  | Yes |
| Vangness WMA                   | Norman     | 14344211  | 6   | \$530    | Yes |
| Moccasin WMA                   | Norman     | 14343226  | 27  | \$2,387  | Yes |
| Faith WMA                      | Norman     | 14443225  | 20  | \$1,768  | Yes |
| Twin Valley WMA                | Norman     | 14345225  | 30  | \$2,652  | Yes |
| Cupido WMA                     | Norman     | 14345236  | 103 | \$9,106  | Yes |
| Cupido WMA                     | Norman     | 14345225  | 107 | \$9,460  | Yes |
| Cupido WMA                     | Norman     | 14345236  | 34  | \$3,006  | Yes |
| Mocassin Creek WMA             | Norman     | 14343223  | 50  | \$4,420  | Yes |
| Rockwell WMA                   | Norman     | 14345203  | 160 | \$14,146 | Yes |
| Dalby WMA                      | Norman     | 14345211  | 76  | \$6,719  | Yes |
| Neal WMA                       | Norman     | 14345214  | 14  | \$1,237  | Yes |
| Syre WMA                       | Norman     | 14344228  | 15  | \$1,326  | Yes |
| Vangness WMA                   | Norman     | 14344211  | 47  | \$4,155  | Yes |
| Agassiz/Olson WMA              | Norman     | 14645222  | 162 | \$14,323 | Yes |
| Agassiz Olson WMA              | Norman     | 14645216  | 4   | \$353    | Yes |
| Neal WMA                       | Norman     | 14345214  | 160 | \$14,146 | Yes |
| Prairie Dunes WMA              | Norman     | 14644219  | 216 | \$19,097 | Yes |
| Moccasin WMA                   | Norman     | 14343223  | 40  | \$3,536  | Yes |
| Agassiz/Nelson WMA             | Norman     | 14645236  | 80  | \$7,073  | Yes |
| Faith WMA                      | Norman     | 14443225  | 106 | \$9,371  | Yes |
| Gordon Yeager WMA              | Olmsted    | 10713233  | 26  | \$2,298  | Yes |
| Oronoco Prairie SNA            | Olmsted    | 10814222  | 22  | \$1,945  | Yes |
| Oronoco Prairie SNA            | Olmsted    | 10814222  | 7   | \$618    | Yes |
| Oronoco Prairie SNA            | Olmsted    | 10814222  | 6   | \$530    | Yes |
| Vermilya WMA                   | Olmsted    | 10511212  | 44  | \$3,890  | Yes |
| Haverhill WMA                  | Olmsted    | 10713226  | 11  | \$972    | Yes |
| Suess WMA                      | Olmsted    | 10515222  | 15  | \$1,326  | Yes |
| Rock Dell WMA                  | Olmsted    | 10515204  | 33  | \$2,917  | Yes |
| Gordon Yeager WMA              | Olmsted    | 10713233  | 5   | \$442    | Yes |
| Haverhill WMA                  | Olmsted    | 10713227  | 2   | \$176    | Yes |
| Rock Dell WMA                  | Olmsted    | 10516204  | 20  | \$1,768  | Yes |
| Haverhill WMA                  | Olmsted    | 10713226  | 11  | \$972    | Yes |
| Orwell WMA                     | Otter Tail | 13244226  | 14  | \$1,237  | Yes |
| Doran Schott WMA               | Otter Tail | 13144220  | 70  | \$6,188  | Yes |
| Pembina WMA                    | Pennington | 15245206  | 128 | \$11,317 | Yes |
| Pembina WMA                    | Pennington | 15345230  | 45  | \$3,978  | Yes |
| Pembina WMA                    | Pennington | 15245218  | 39  | \$3,448  | Yes |
| Pembina WMA                    | Pennington | 15345230  | 7   | \$618    | Yes |
| Jacksnipe WMA                  | Pennington | 15342228  | 140 | \$12,377 | Yes |
| Jacksnipe WMA                  | Pennington | 15342228  | 149 | \$13,173 | Yes |
| Pembina WMA                    | Pennington | 15245205  | 5   | \$442    | Yes |
| Pembina WMA                    | Pennington | 15245206  | 242 | \$21,396 | Yes |
| Higinbotham WMA                | Pennington | 15244209  | 210 | \$18,566 | Yes |

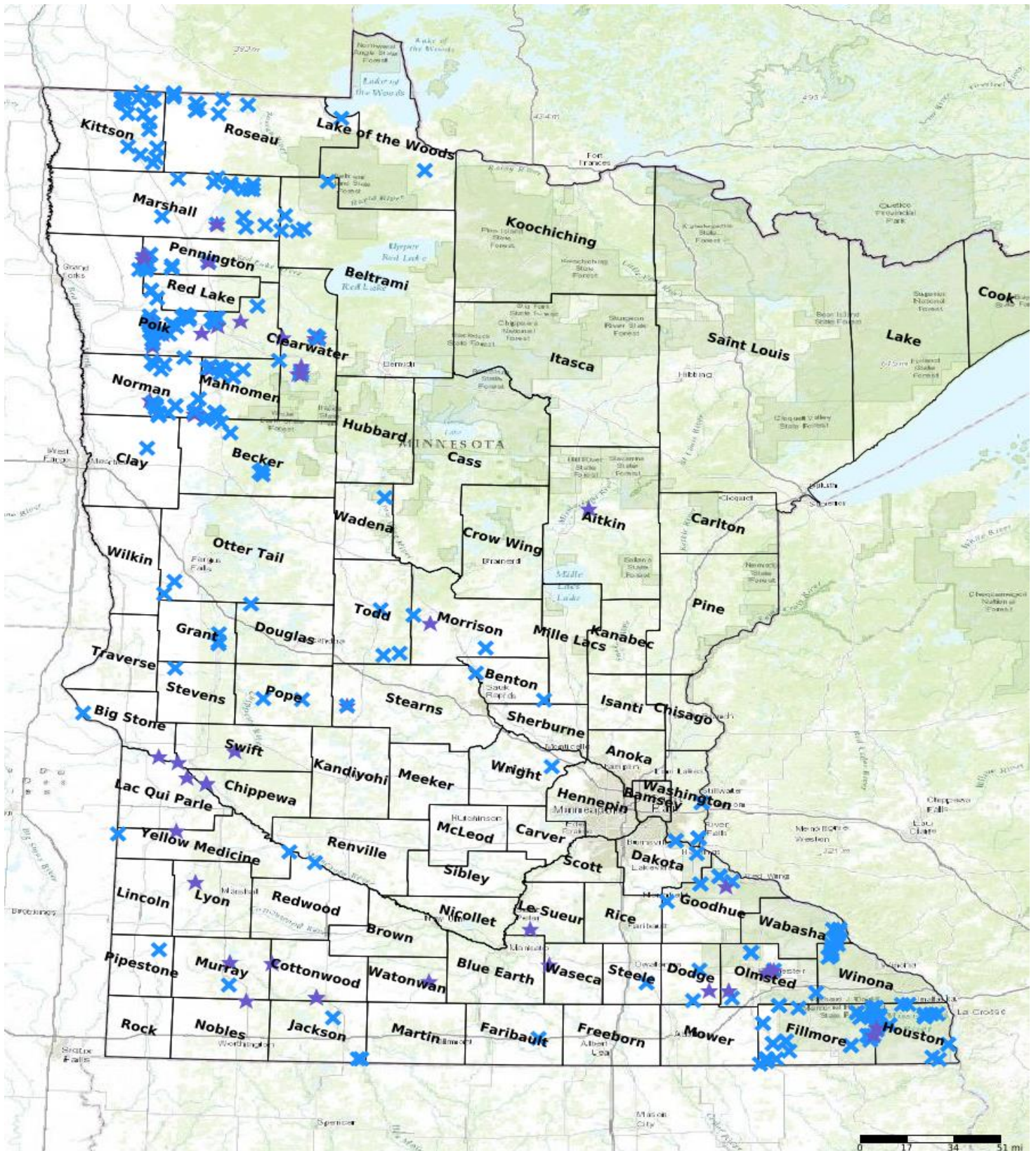


|                     |            |          |       |           |     |
|---------------------|------------|----------|-------|-----------|-----|
| Jacksnipe WMA       | Pennington | 15342228 | 80    | \$7,073   | Yes |
| Pembina WMA         | Pennington | 15345216 | 194   | \$17,152  | Yes |
| Pembina WMA         | Pennington | 15345230 | 43    | \$3,801   | Yes |
| Pembina WMA         | Pennington | 15345216 | 60    | \$5,304   | Yes |
| Jack Snipe WMA      | Pennington | 15342228 | 73    | \$6,454   | Yes |
| Pembina WMA         | Pennington | 15345218 | 23    | \$2,033   | Yes |
| Pembina WMA         | Pennington | 15345230 | 16    | \$1,414   | Yes |
| Jacksnipe WMA       | Pennington | 15342228 | 80    | \$7,073   | Yes |
| Higinbotham WMA     | Pennington | 15244204 | 73    | \$6,454   | Yes |
| Pembina WMA         | Pennington | 15245207 | 1,280 | \$113,170 | Yes |
| Pembina WMA         | Pennington | 15245218 | 38    | \$3,359   | Yes |
| Pembina WMA         | Pennington | 15245206 | 255   | \$22,545  | Yes |
| Prairie Coteau SNA  | Pipestone  | 10844232 | 21    | \$1,856   | Yes |
| Mentor Prairie WMA  | Polk       | 14943216 | 120   | \$10,609  | Yes |
| Thorson WMA         | Polk       | 14945234 | 75    | \$6,631   | Yes |
| Polk WMA            | Polk       | 14942213 | 25    | \$2,210   | Yes |
| Chicog WMA          | Polk       | 14845233 | 8     | \$707     | Yes |
| Tympanuchus WMA     | Polk       | 14945228 | 171   | \$15,118  | Yes |
| Mentor Prairie WMA  | Polk       | 14943218 | 5     | \$442     | Yes |
| Mentor Prairie WMA  | Polk       | 14943216 | 11    | \$972     | Yes |
| Burnham WMA         | Polk       | 14845224 | 12    | \$1,060   | Yes |
| Liberty WMA         | Polk       | 14745216 | 1     | \$88      | Yes |
| Liberty WMA         | Polk       | 14745209 | 320   | \$28,292  | Yes |
| Mentor Prairie WMA  | Polk       | 14943221 | 230   | \$20,335  | Yes |
| Burnham WMA         | Polk       | 14845214 | 242   | \$21,396  | Yes |
| Kakaik WMA          | Polk       | 14942226 | 152   | \$13,438  | Yes |
| Oak Ridge Marsh WMA | Polk       | 14844203 | 10    | \$884     | Yes |
| Dugdale WMA         | Polk       | 14944234 | 93    | \$8,222   | Yes |
| Kakaik WMA          | Polk       | 14942226 | 92    | \$8,134   | Yes |
| Godfrey WMA         | Polk       | 14844220 | 80    | \$7,073   | Yes |
| Polk WMA            | Polk       | 14942214 | 44    | \$3,890   | Yes |
| Chicog WMA          | Polk       | 14845221 | 30    | \$2,652   | Yes |
| Thorson WMA         | Polk       | 14845205 | 140   | \$12,377  | Yes |
| Dorr WMA            | Polk       | 14843213 | 1     | \$88      | Yes |
| Kertsonville WMA    | Polk       | 14945216 | 604   | \$53,402  | Yes |
| Trail WMA           | Polk       | 14845213 | 22    | \$1,945   | Yes |
| Thorson Prairie WMA | Polk       | 14845217 | 104   | \$9,195   | Yes |
| Oak Ridge Marsh WMA | Polk       | 14844203 | 39    | \$3,448   | Yes |
| Dugdale WMA         | Polk       | 14944234 | 170   | \$15,030  | Yes |
| Mentor Prairie WMA  | Polk       | 14943208 | 55    | \$4,862   | Yes |
| Mentor Prairie WMA  | Polk       | 14943216 | 187   | \$16,533  | Yes |
| Mentor Prairie WMA  | Polk       | 14943216 | 10    | \$884     | Yes |
| Chicog WMA          | Polk       | 14845233 | 760   | \$67,194  | Yes |
| Enerson WMA         | Polk       | 14940219 | 1     | \$88      | Yes |
| Polk WMA            | Polk       | 14942236 | 1     | \$88      | Yes |
| Pembina WMA         | Polk       | 15246214 | 8     | \$707     | Yes |
| Tympanuchus WMA     | Polk       | 14945233 | 408   | \$36,072  | Yes |
| Stipa WMA           | Polk       | 15045211 | 90    | \$7,957   | Yes |
| Mentor Prairie WMA  | Polk       | 14943216 | 65    | \$5,746   | Yes |
| Tympanuchus WMA     | Polk       | 14945228 | 275   | \$24,313  | Yes |
| Thorson WMA         | Polk       | 14945234 | 20    | \$1,768   | Yes |
| Polk WMA            | Polk       | 14942236 | 21    | \$1,856   | Yes |
| Thorson WMA         | Polk       | 14945234 | 6     | \$530     | Yes |
| Erskine WMA         | Polk       | 14942222 | 32    | \$2,829   | Yes |
| Thorson WMA         | Polk       | 14945234 | 81    | \$7,161   | Yes |
| Chippewa Falls WMA  | Pope       | 12437209 | 184   | \$16,268  | Yes |
| Selix NPB           | Pope       | 12439209 | 18    | \$1,591   | Yes |
| Huot WMA            | Red Lake   | 15145228 | 23    | \$2,033   | Yes |

|                          |                    |           |       |           |     |
|--------------------------|--------------------|-----------|-------|-----------|-----|
| Marcoux WMA              | Red Lake           | 15040224  | 225   | \$19,893  | Yes |
| Huot WMA                 | Red Lake           | 15145228  | 37    | \$3,271   | Yes |
| Whispering Ridge AMA     | Redwood            | 11436232  | 59    | \$5,216   | Yes |
| Roseau River WMA         | Roseau             | 16444233  | 67    | \$5,923   | Yes |
| Roseau River WMA         | Roseau             | 16344204  | 70    | \$6,188   | Yes |
| Roseau River WMA         | Roseau             | 16342201  | 80    | \$7,073   | Yes |
| Roseau Lake WMA          | Roseau             | 16340217  | 1,460 | \$129,084 | Yes |
| Roseau River WMA         | Roseau             | 16343226  | 1,120 | \$99,023  | Yes |
| Moose Marsh WMA          | Roseau             | 16242202  | 72    | \$6,365   | Yes |
| Roseau River WMA         | Roseau             | 16343215  | 1,563 | \$138,191 | Yes |
| Roseau River WMA         | Roseau             | 16444228  | 255   | \$22,545  | Yes |
| South Shore WMA          | Roseau             | 16235206  | 455   | \$40,228  | Yes |
| Roseau River WMA         | Roseau             | 16343234  | 85    | \$7,515   | Yes |
| North Fork WMA           | Stearns            | 12435223  | 17    | \$1,503   | Yes |
| North Fork WMA           | Stearns            | 12435223  | 17    | \$1,503   | Yes |
| Aurora WMA               | Steele             | 106190220 | 30    | \$2,652   | Yes |
| Eldorado WMA             | Stevens            | 12644213  | 90    | \$7,957   | Yes |
| Danvers WMA              | Swift              | 12140230  | 10    | \$884     | Yes |
| Lac qui Parle WMA        | Swift              | 12043219  | 11    | \$972     | Yes |
| Ostendorff WMA           | Todd               | 12732204  | 4     | \$353     | Yes |
| Sheets Lake WMA          | Todd               | 13033209  | 14    | \$1,237   | Yes |
| Grey Eagle WMA           | Todd               | 12733210  | 2     | \$176     | Yes |
| Whitewater WMA           | Wabasha            | 10910236  | 320   | \$28,292  | Yes |
| Kellogg-Weaver Dunes SNA | Wabasha            | 10909207  | 173   | \$15,295  | Yes |
| McCarthy Lake WMA        | Wabasha            | 10909206  | 63    | \$5,570   | Yes |
| McCarthy Lake Tr 14 WMA  | Wabasha            | 10910202  | 10    | \$884     | Yes |
| McCarthy Lake Tr 2 WMA   | Wabasha            | 10909206  | 62    | \$5,481   | Yes |
| Whitewater WMA           | Wabasha            | 10910225  | 375   | \$33,155  | Yes |
| Burgen Lake Prairie WMA  | Wadena             | 13833234  | 296   | \$26,170  | Yes |
| Lost Valley Prairie SNA  | Washington         | 02720228  | 12    | \$1,060   | Yes |
| St. Croix Savanna SNA    | Washington         | 02920215  | 26    | \$2,298   | Yes |
| Lost Valley Prairie SNA  | Washington         | 02720228  | 1     | \$88      | Yes |
| Grey Cloud Dunes SNA     | Washington         | 02721232  | 10    | \$884     | Yes |
| St. Croix Savanna SNA    | Washington         | 02920215  | 10    | \$884     | Yes |
| Lost Valley Prairie SNA  | Washington         | 02720228  | 4     | \$353     | Yes |
| Grey Cloud Dunes SNA     | Washington         | 02721232  | 42    | \$3,713   | Yes |
| W.R. Taylor Memorial WMA | Watsonwan          | 106300219 | 15    | \$1,326   | Yes |
| Drenckhan WMA            | Winona             | 10810202  | 18    | \$1,591   | Yes |
| Kronebusch WMA           | Winona             | 10810223  | 52    | \$4,597   | Yes |
| Whitewater WMA           | Winona             | 10810234  | 4     | \$353     | Yes |
| Whitewater WMA           | Winona             | 10810226  | 275   | \$24,313  | Yes |
| Whitewater WMA           | Winona             | 10810214  | 83    | \$7,338   | Yes |
| Whitewater WMA           | Winona             | 10810226  | 500   | \$44,207  | Yes |
| Whitewater WMA           | Winona             | 10809206  | 160   | \$14,146  | Yes |
| Pelican Lake WMA         | Wright             | 10724217  | 9     | \$795     | Yes |
| Pelican Lake WMA         | Wright             | 12024217  | 9     | \$795     | Yes |
| Miller-Richter WMA       | Yellow<br>Medicine | 11543206  | 19    | \$1,679   | Yes |
| Mound Spring Prairie SNA | Yellow<br>Medicine | 11546218  | 43    | \$3,801   | Yes |
| Swedes Forest SNA        | Yellow<br>Medicine | 11438212  | 33    | \$2,917   | Yes |



# Parcel Map



- Protect in Easement
- ▲ Protect in Fee with PILT
- Protect in Fee W/O PILT
- ★ Restore
- ✦ Enhance
- ✚ Other