

Request for Funding

Lessard-Sams Outdoor Heritage Council Fiscal Year 2016 / ML 2015

Program or Project Title: Mississippi Headwaters Habitat Partnership

Funds Requested: \$4,685,000

Manager's Name: Robert McGillivray

Title: Senior Project Manager

Organization: The Trust for Public Land

Street Address: 2610 University Ave W

City: St. Paul, MN 55114

Telephone: 651-999-5307

E-Mail: rjm@tpl.org

Organization Web Site: www.tpl.org

County Locations: Aitkin, Becker, Benton, Cass, Clearwater, Crow River, Crow Wing, Hubbard, Itasca, and Wadena.

Ecological Planning Regions:

- Northern Forest

Activity Type:

- Protect in Easement
- Protect in Fee

Priority Resources Addressed by Activity:

- Forest
- Habitat

Abstract:

The Mississippi Headwaters Habitat Partnership will protect, restore and enhance high priority habitat land in fee and easement in the quickly developing Mississippi Headwaters landscape resulting in connectivity of shoreline and forest habitat, and water quality benefits.

Design and Scope of Work:

The Mississippi River is one of the world's greatest river systems in terms of size, habitat diversity, biological productivity, and sources of drinking water. It is the fourth longest river in the world with over 18 million people depending on this watershed for drinking water supply. The critical Headwaters Region, roughly the first 400 miles of the main stem and associated watersheds, is home to some of our state's most outstanding freshwater ecological resources. It provides outstanding habitat for fish and wildlife and is a major route for migratory waterfowl. It is also an unparalleled recreational resource for outdoor activities such as hunting, fishing, wildlife observation, boating and hiking. These natural resources located just several hours north of the Twin Cities have led this area to become one of the most rapidly growing areas in Minnesota, which also faces intensified land use practices.

The Mississippi Headwaters Habitat Partnership seeks to protect sensitive shoreline and habitat resources in the Headwaters area from fragmentation in order to ensure these recreational and natural resource benefits continue into the future. The idea to form a Partnership around habitat protection and restoration in the area grew out of a series of habitat conservation successes and related partnership work in the Headwaters area in recent years: LaSalle Lake, Mississippi River Northwoods, numerous forest legacy projects; shoreland easements initiatives; aquatic management areas additions; and more. During this same time period, The Trust for Public Land organized and hosted a series of six stakeholder gatherings around broader water quality, habitat protection and

recreational access issues in the Headwaters area with DNR, MLT and other stakeholders in order to explore the connections between individual conservation outcomes. This Partnership is an effort to initiate more coordination, leverage and targeting in the Headwaters Area going forward.

Habitat targeted for protection and restoration by this partnership will further the goals and strategies outlined in numerous state / area resource management plans, including Aquatic Management Area Acquisition Plan; Tomorrow's Habitat for the Wild and Rare; and, Outdoor Heritage Fund: A 25 Year Framework.

The Mississippi Headwaters Habitat Partnership is specifically three partner organizations-The Trust for Public Land, Minnesota Land Trust, Minnesota DNR - working to protect, restore and enhance existing priority habitat as well as what will no doubt be emerging habitat priorities for fish and game in the Headwaters Region. Initial Partnership efforts will likely focus on the mainstem of the Mississippi River; key tributaries; critical lakesheds; specific natural resource communities; habitat lands with a proven link to water quality; and, recreational access. Work of each of the three initial partners is outlined below:

The Trust for Public Land (TPL) will protect priority lands in fee. Ten priority parcels have been identified for acquisition, the majority of which contain shoreline on the Mississippi or its tributaries. These lands provide excellent habitat for a variety of species, connect to other public land and would be conveyed to the state to be managed as WMAs, AMAs, SNAs or State Forest Land. Several of the parcels could also be conveyed to counties for permanent stewardship. It is expected the requested funding would result in protection of up to two or three of these properties.

The Minnesota Land Trust (MLT) will protect critical shoreline habitat with conservation easements. With more than 75% of Minnesota's landscape in private ownership, private land protection is essential to meet our state's conservation goals. This is especially true in the shorelands of the Mississippi Headwaters which have an even higher percentage of private ownership and which are also one of the primary targets for land use conversion. Several priority landowners have been identified which help build important habitat complexes by buffering already protected lands such as WMAs or AMAs. In addition, this project will help identify other important protection opportunities by working with partners such as the Leech Lake Area Watershed Foundation and willing landowners to further the state's conservation goals. We anticipate the funding requested would help protect up to four of targeted properties.

DNR will focus on protection both in fee and easement. Five potential tracts have been identified that will protect undeveloped shoreline. Three of these tracts add to existing state land - either Aquatic Management Areas (AMA) or Wildlife Management Areas (WMA) - and two would establish new Aquatic Management Areas. All will protect the critical "transition zone" that exists where aquatic habitat transitions into upland/riparian habitat. Upland habitat to be protected is primarily forested land. The requested funding would result in protection of up to three of these five parcels.

The Partnership expects to evolve in the years ahead to include emerging areas for habitat protection, refined priorities and additional implementation partners.

How the request addresses MN habitats:

All of the areas targeted by this proposal have been identified and prioritized through, state, regional and local natural resource plans due to their high biodiversity, connectivity and ability to preserve habitat for both game species and species of greatest conservation need. The shoreline zone is one of the most essential--and one of the most threatened--habitat resources in the state, providing a range of benefits for fisheries, migratory waterfowl and upland game species.

Please explain the nature of urgency:

The Headwaters Landscape is near the Twin Cities and in the heart of the Minnesota lakes' tourism region resulting in extreme development pressure, intensified land use practices, and agricultural conversion. The rebounding real estate market is causing forests to be liquidated and older landowners to sell now.

Planning

MN State-wide Conservation Plan Priorities:

- H2 Protect critical shoreland of streams and lakes
- LU8 Protect large blocks of forest land

Plans Addressed:

- Minnesota Forest Resource Council Landscape Plans
- Outdoor Heritage Fund: A 25 Year Framework

Please describe the science based planning and evaluation model used:

In addition to the science based planning which forms the basis for the conservation plans referenced above, the Partnership intends to refine goals and priorities as plans are updated and use prioritization and evaluation tools currently in development by the DNR and other partners.

LSOHC Northern Forest Section Priorities:

- Protect shoreland and restore or enhance critical habitat on wild rice lakes, shallow lakes, cold water lakes, streams and rivers, and spawning areas

Accelerates or Supplements Current Efforts:

This proposal compliments the efforts of the individual members of the Mississippi Headwaters Habitat Partnership to accelerate protection of high quality, sensitive shoreline which is one of Minnesota’s most threatened and important habitat types. Although all of us have been active in this landscape for years and have previously received OHF funding, this effort will help accelerate and coordinate those efforts to do work that could otherwise not be done. For example, although the Outdoor Heritage Fund has helped advance MLT efforts in shoreline protection in this region through its investment in the Sensitive Shoreline project and North Central Lakes Fisheries Habitat project, MLT has identified several key conservation easement opportunities in this area that do not fit into those programs and that will not be completed without this funding. Somewhat similarly, all of the parcels identified in this proposal by DNR have been sought by DNR for some time, but due to their location in the state have not competed well for funding since current DNR emphasis is on prairie and grassland protection. Nevertheless, DNR does highly value the protection of key tracts in the forested part of the state and this funding would accelerate that effort.

Non-OHF Money Spent in the Past:

Appropriation Year	Source	Amount
2009	N/A. This is the first year the MHHP has sought LSOHC funding.	

Sustainability and Maintenance:

TPL will transfer all lands acquired to the state, or possibly a county, for permanent stewardship. A budget line has been included for initial development work. Ongoing maintenance of lands will be paid for out of DNR or county funds.

The land protected through easements held by the Minnesota Land Trust will be sustained through the best standards and practices for conservation easement stewardship. MLT is a nationally-accredited land trust with a successful stewardship program that includes annual property monitoring, effective records management, addressing inquiries and interpretations, tracking changes in ownership, investigating potential violations and defending the easement in case of a true violation. MLT will work with the private landowners who complete an easement to develop land management plans to ensure that the quality of the protected habitat will remain into the future. Funding for these activities is included in the project budget.

DNR will manage initial development of the parcels such as posting, signing, and public parking areas. A budget line has been included for this work. The parcels will also have ongoing maintenance needs. Costs directly borne by DNR for such work will come from operating budgets, or one-time funding in cases of special projects.

Maintain Project Outcomes:

Year	Source of Funds	Step 1	Step 2	Step 3
TPL - 2015 and beyond	Other state and local funds	DNR or county will maintain land as needed		
MLT - 2015 and beyond	Outdoor Heritage Fund and MLT funds	Secure easement and begin to monitor, manage, and enforce the easement through MLTs stewardship program		
DNR - 2015 and beyond	Other state funds	DNR or county will maintain land as needed		

Applicable Criteria:

*If funded, this proposal will meet all applicable criteria set forth in MS 97A.056? - **Yes***

Government Approval:

*Will local government approval be sought prior to acquisition? - **Yes***

Permanent Protection:

*Is the land you plan to acquire free of any other permanent protection? - **Yes***

Current Hunting and Fishing Plan:

*Is this land currently open for hunting and fishing? - **No***

Future Hunting and Fishing Plan:

*Will the land be open for hunting and fishing after completion? - **Yes***

Acquired land will be open for public hunting and fishing consistent with DNR regulations.

Public Use:

*Will the eased land be open for public use? - **No***

Permanent Protection:

*Is the land you plan to acquire free of any other permanent protection? - **Yes***

Accomplishment Timeline

Activity	Approximate Date Completed
TPL - Landowner negotiations, due diligence, acquire land and convey to state/county	June 2018
MLT - Complete conservation easement(s)	June 2018
DNR - Due diligence and acquire land	June 2018

Outcomes

Programs in the northern forest region:

- Increased availability and improved condition of riparian forests and other habitat corridors *The Headwaters Habitat program will yield many of these outcomes. The targeted acquisitions will connect existing public lands and prevent fragmentation. This will also help yield healthy populations of many aquatic and terrestrial species, including the important fisheries of the region. Because we are focusing on shoreline, aquatic habitat will be improved. Several of the parcels will provide access to public lands that currently have poor or no access. These lands will also provide excellent outdoor recreational opportunities. Because a number of the targeted lands are SNA additions, populations of species of special concern and habitats that have experienced substantial decline will be improved.*

Relationship to Other Funds:

- No Relationships Listed

Although this proposal does not presently envision directly employing the above funds in its efforts, both the Environment and Natural Resources Trust Fund and the Clean Water fund are being used in connection with the broader efforts of other conservation stakeholders in the area with whom we are closely working.

Budget Spreadsheet

Total Amount of Request: \$4,685,000

Budget and Cash Leverage

Budget Name	LSOHC Request	Anticipated Leverage	Leverage Source	Total
Personnel	\$0	\$0		\$0
Contracts	\$0	\$0		\$0
Fee Acquisition w/ PILT	\$2,570,000	\$150,000	Various state, local and private funds	\$2,720,000
Fee Acquisition w/o PILT	\$450,000	\$50,000	Various state, local and private funds	\$500,000
Easement Acquisition	\$1,345,000	\$0		\$1,345,000
Easement Stewardship	\$80,000	\$0		\$80,000
Travel	\$8,000	\$0		\$8,000
Professional Services	\$122,000	\$0		\$122,000
Direct Support Services	\$5,000	\$0		\$5,000
DNR Land Acquisition Costs	\$20,000	\$0		\$20,000
Capital Equipment	\$0	\$0		\$0
Other Equipment/Tools	\$0	\$0		\$0
Supplies/Materials	\$5,000	\$0		\$5,000
DNR IDP	\$80,000	\$0		\$80,000
Total	\$4,685,000	\$200,000	-	\$4,885,000

Budget and Cash Leverage by Partnership

Budget Name	Partnership	LSOHC Request	Anticipated Leverage	Leverage Source	Total
Personnel	MN Land Trust	\$0	\$0		\$0
Contracts	MN Land Trust	\$0	\$0		\$0
Fee Acquisition w/ PILT	MN Land Trust	\$0	\$0		\$0
Fee Acquisition w/o PILT	MN Land Trust	\$0	\$0		\$0
Easement Acquisition	MN Land Trust	\$1,100,000	\$0		\$1,100,000
Easement Stewardship	MN Land Trust	\$80,000	\$0		\$80,000
Travel	MN Land Trust	\$8,000	\$0		\$8,000
Professional Services	MN Land Trust	\$97,000	\$0		\$97,000
Direct Support Services	MN Land Trust	\$0	\$0		\$0
DNR Land Acquisition Costs	MN Land Trust	\$0	\$0		\$0
Capital Equipment	MN Land Trust	\$0	\$0		\$0
Other Equipment/Tools	MN Land Trust	\$0	\$0		\$0
Supplies/Materials	MN Land Trust	\$0	\$0		\$0
DNR IDP	MN Land Trust	\$0	\$0		\$0
Total	-	\$1,285,000	\$0	-	\$1,285,000

Budget Name	Partnership	LSOHC Request	Anticipated Leverage	Leverage Source	Total
Personnel	The Trust for Public Land	\$0	\$0		\$0
Contracts	The Trust for Public Land	\$0	\$0		\$0
Fee Acquisition w/ PILT	The Trust for Public Land	\$1,400,000	\$150,000	Various state, local and private funds	\$1,550,000
Fee Acquisition w/o PILT	The Trust for Public Land	\$450,000	\$50,000	Various state, local and private funds	\$500,000
Easement Acquisition	The Trust for Public Land	\$0	\$0		\$0
Easement Stewardship	The Trust for Public Land	\$0	\$0		\$0
Travel	The Trust for Public Land	\$0	\$0		\$0
Professional Services	The Trust for Public Land	\$0	\$0		\$0
Direct Support Services	The Trust for Public Land	\$0	\$0		\$0
DNR Land Acquisition Costs	The Trust for Public Land	\$20,000	\$0		\$20,000
Capital Equipment	The Trust for Public Land	\$0	\$0		\$0
Other Equipment/Tools	The Trust for Public Land	\$0	\$0		\$0
Supplies/Materials	The Trust for Public Land	\$0	\$0		\$0
DNR IDP	The Trust for Public Land	\$30,000	\$0		\$30,000
Total	-	\$1,900,000	\$200,000	-	\$2,100,000

Budget Name	Partnership	LSOHC Request	Anticipated Leverage	Leverage Source	Total
Personnel	MN DNR	\$0	\$0		\$0
Contracts	MN DNR	\$0	\$0		\$0
Fee Acquisition w/ PILT	MN DNR	\$1,170,000	\$0		\$1,170,000
Fee Acquisition w/o PILT	MN DNR	\$0	\$0		\$0
Easement Acquisition	MN DNR	\$245,000	\$0		\$245,000
Easement Stewardship	MN DNR	\$0	\$0		\$0
Travel	MN DNR	\$0	\$0		\$0
Professional Services	MN DNR	\$25,000	\$0		\$25,000
Direct Support Services	MN DNR	\$5,000	\$0		\$5,000
DNR Land Acquisition Costs	MN DNR	\$0	\$0		\$0
Capital Equipment	MN DNR	\$0	\$0		\$0
Other Equipment/Tools	MN DNR	\$0	\$0		\$0
Supplies/Materials	MN DNR	\$5,000	\$0		\$5,000
DNR IDP	MN DNR	\$50,000	\$0		\$50,000
Total	-	\$1,500,000	\$0	-	\$1,500,000

Amount of Request: \$4,685,000

Amount of Leverage: \$200,000

Leverage as a percent of the Request: 4.27%

Output Tables

Table 1a. Acres by Resource Type

Type	Wetlands	Prairies	Forest	Habitats	Total
Restore	0	0	0	0	0
Protect in Fee with State PILT Liability	0	0	300	430	730
Protect in Fee W/O State PILT Liability	0	0	100	100	200
Protect in Easement	0	0	0	330	330
Enhance	0	0	0	0	0
Total	0	0	400	860	1,260

Table 2. Total Requested Funding by Resource Type

Type	Wetlands	Prairies	Forest	Habitats	Total
Restore	\$0	\$0	\$0	\$0	\$0
Protect in Fee with State PILT Liability	\$0	\$0	\$700,000	\$2,005,000	\$2,705,000
Protect in Fee W/O State PILT Liability	\$0	\$0	\$225,000	\$225,000	\$450,000
Protect in Easement	\$0	\$0	\$0	\$1,530,000	\$1,530,000
Enhance	\$0	\$0	\$0	\$0	\$0
Total	\$0	\$0	\$925,000	\$3,760,000	\$4,685,000

Table 3. Acres within each Ecological Section

Type	Metro/Urban	Forest/Prairie	SE Forest	Prairie	Northern Forest	Total
Restore	0	0	0	0	0	0
Protect in Fee with State PILT Liability	0	0	0	0	730	730
Protect in Fee W/O State PILT Liability	0	0	0	0	200	200
Protect in Easement	0	0	0	0	330	330
Enhance	0	0	0	0	0	0
Total	0	0	0	0	1,260	1,260

Table 4. Total Requested Funding within each Ecological Section

Type	Metro/Urban	Forest/Prairie	SE Forest	Prairie	Northern Forest	Total
Restore	\$0	\$0	\$0	\$0	\$0	\$0
Protect in Fee with State PILT Liability	\$0	\$0	\$0	\$0	\$2,705,000	\$2,705,000
Protect in Fee W/O State PILT Liability	\$0	\$0	\$0	\$0	\$450,000	\$450,000
Protect in Easement	\$0	\$0	\$0	\$0	\$1,530,000	\$1,530,000
Enhance	\$0	\$0	\$0	\$0	\$0	\$0
Total	\$0	\$0	\$0	\$0	\$4,685,000	\$4,685,000

Table 5. Average Cost per Acre by Resource Type

Type	Wetlands	Prairies	Forest	Habitats
Restore	\$0	\$0	\$0	\$0
Protect in Fee with State PILT Liability	\$0	\$0	\$2,333	\$4,663
Protect in Fee W/O State PILT Liability	\$0	\$0	\$2,250	\$2,250
Protect in Easement	\$0	\$0	\$0	\$4,636
Enhance	\$0	\$0	\$0	\$0

Table 6. Average Cost per Acre by Ecological Section

Type	Metro/Urban	Forest/Prairie	SE Forest	Prairie	Northern Forest
Restore	\$0	\$0	\$0	\$0	\$0
Protect in Fee with State PILT Liability	\$0	\$0	\$0	\$0	\$3,705
Protect in Fee W/O State PILT Liability	\$0	\$0	\$0	\$0	\$2,250
Protect in Easement	\$0	\$0	\$0	\$0	\$4,636
Enhance	\$0	\$0	\$0	\$0	\$0

Target Lake/Stream/River Feet or Miles

Parcel List

Section 1 - Restore / Enhance Parcel List

No parcels with an activity type restore or enhance.

Section 2 - Protect Parcel List

Aitkin

Name	TRDS	Acres	Est Cost	Existing Protection?	Hunting?	Fishing?
MLT - Tamarack River	04922209	40	\$0	No	Not Applicable	Not Applicable

Becker

Name	TRDS	Acres	Est Cost	Existing Protection?	Hunting?	Fishing?
DNR - Bad Medicine Lake AMA	14237218	8	\$600,000	No	Limited	Full
DNR - Wolf Lake AMA	13937229	63	\$300,000	No	Full	Full
TPL - Dinner Creek SNA	14236235	240	\$700,000	No	Full	Full

Benton

Name	TRDS	Acres	Est Cost	Existing Protection?	Hunting?	Fishing?
TPL - Englund Ecotone	03731213	320	\$1,000,000	No	Full	Full

Cass

Name	TRDS	Acres	Est Cost	Existing Protection?	Hunting?	Fishing?
TPL - Crow Wing River, Lyons State Forest/WMA/AMA	13632231	500	\$1,000,000	No	Full	Full

Clearwater

Name	TRDS	Acres	Est Cost	Existing Protection?	Hunting?	Fishing?
TPL - Mississippi River, Iron Springs Bog SNA	14436233	60	\$200,000	No	Full	Full

Crow River

Name	TRDS	Acres	Est Cost	Existing Protection?	Hunting?	Fishing?
MLT - Pine River-Star Lake	13728226	300	\$1,100,000	No	Not Applicable	Not Applicable

Crow Wing

Name	TRDS	Acres	Est Cost	Existing Protection?	Hunting?	Fishing?
DNR - Cuyuna Scout Camp AMA - EASEMENT	13727212	120	\$245,000	No	Limited	Full
DNR - Greenwood Lake AMA	13627208	137	\$800,000	No	Full	Full
TPL - Mississippi River, Baxter	13329223	600	\$1,800,000	No	Full	Full
TPL - Mississippi River, Crow Wing State Forest North	04729220	159	\$500,000	No	Full	Full
TPL - Mississippi River, Crow Wing State Forest South	04730225	358	\$700,000	No	Full	Full

Hubbard

Name	TRDS	Acres	Est Cost	Existing Protection?	Hunting?	Fishing?
DNR - Crow Wing Chain AMA	13933214	69	\$300,000	No	Full	Full
MLT - Belle Taine Lake	14033208	175	\$0	No	Not Applicable	Not Applicable
MLT - Schoolcraft Lake	14234205	121	\$0	No	Not Applicable	Not Applicable
TPL - LaSalle Creek SNA	14435235	350	\$800,000	No	Full	Full
TPL - Schoolcraft River AMA	14533219	130	\$400,000	No	Full	Full

Itasca

Name	TRDS	Acres	Est Cost	Existing Protection?	Hunting?	Fishing?
MLT - Smith Creek	05326212	33	\$0	No	Not Applicable	Not Applicable

Wadena

Name	TRDS	Acres	Est Cost	Existing Protection?	Hunting?	Fishing?
TPL - Crow Wing River, Lyons State Forest/WMA/AMA	13633215	500	\$1,000,000	No	Full	Full

Section 2a - Protect Parcel with Bldgs

No parcels with an activity type protect and has buildings.

Section 3 - Other Parcel Activity

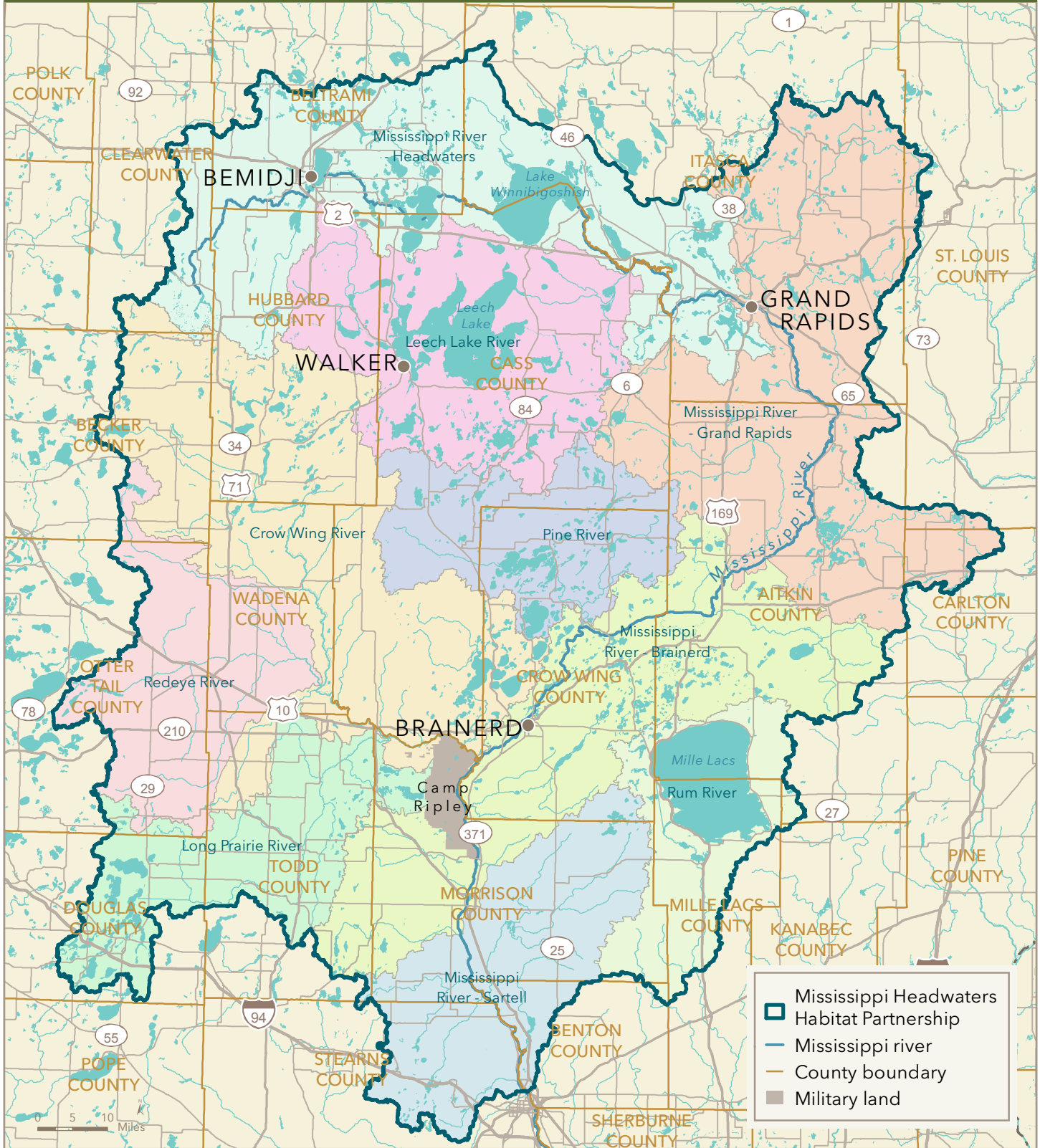
No parcels with an other activity type.



- Protect in Easement
- ▲ Protect in Fee with PILT
- Protect in Fee w/o PILT
- ★ Restore
- ✕ Enhance
- ⊕ Other

MISSISSIPPI HEADWATERS

HABITAT PARTNERSHIP



THE TRUST for PUBLIC LAND
LAND FOR PEOPLE

