



Lessard-Sams Outdoor Heritage Council

MN Prairie Recovery Project - Phase VI

Laws of Minnesota 2015 Final Report

General Information

Date: 01/11/2023

Project Title: MN Prairie Recovery Project - Phase VI

Funds Recommended: \$4,032,000

Legislative Citation: ML 2015, First Sp. Session, Ch. 2, Art. 1, Sec. 2, Subd. 2(c)

Appropriation Language: \$4,032,000 in the first year is to the commissioner of natural resources for an agreement with The Nature Conservancy to acquire native prairie, wetlands, and savanna and restore and enhance grasslands, wetlands, and savanna. Subject to evaluation criteria in Minnesota Rules, part 6136.0900, priority must be given to acquisition of lands that are eligible for the native prairie bank under Minnesota Statutes, section 84.96, or lands adjacent to protected native prairie. Annual income statements and balance sheets for income and expenses from land acquired with this appropriation must be submitted to the Lessard-Sams Outdoor Heritage Council no later than 180 days following the close of The Nature Conservancys fiscal year. A list of proposed land acquisitions must be provided as part of the required accomplishment plan and must be consistent with the priorities identified in the Minnesota Prairie Conservation Plan.

Manager Information

Manager's Name: Neal Feeken

Title: Prairie Recovery Project Coordinator

Organization: The Nature Conservancy

Address: 1101 W River Parkway Suite 200

City: Minneapolis, MN 55415

Email: nfeeken@tnc.org

Office Number: 612-331-0738

Mobile Number:

Fax Number:

Website: nature.org

Location Information

County Location(s): Clay, Polk, Pope, Stearns, Marshall, Chippewa, Lac qui Parle, Big Stone, Kandiyohi, Swift, Kittson, Roseau, Pennington, Becker, Mahnomen, Red Lake and Norman.

Eco regions in which work will take place:

- Forest / Prairie Transition
- Prairie

Activity types:

- Protect in Fee
- Restore
- Enhance

Priority resources addressed by activity:

- Wetlands
- Prairie

Narrative

Summary of Accomplishments

This project contributed to the goals of the MN Prairie Conservation Plan by protecting 539 acres of prairie/wetland/savanna habitat; restoring 151 acres prairie/grassland; and enhancing 24,604 acres grassland/savanna. We will continue to implement subsequent Phases toward meeting the conservation goals described in the MN Prairie Conservation Plan.

Process & Methods

Phase 6 built upon the success of the MN Prairie Recovery Project Phases 1-5 by continuing and expanding enhancement and protection work in 4 focal areas. Project partners, primarily through our participation in Prairie Plan Local Technical teams, helped us to prioritize and refine guidelines for protection, enhancement and restoration activities within priority landscapes. The Prairie Recovery Program utilizes a collaborative model for conservation and we regularly consult and work with a variety of entities including state and federal agencies, other conservation nonprofits, agricultural producer groups and local governments.

539 acres of existing and restorable grassland were permanently protected within prairie core and corridor areas as defined in the MN Prairie Conservation Plan. Most of the protected lands (499 acres) are, or are in the process of being transferred to the MN DNR for inclusion in the state's WMA system. The additional 40 acres are held by The Nature Conservancy, subject to a recorded notice of funding restrictions pursuant to LSOHC requirements. All lands acquired in fee are FULLY open to hunting and fishing per state of Minnesota regulations. Basic developments have been implemented (boundary signage, habitat improvement, wetland restoration). Protection efforts were coordinated with other partner protection programs (e.g., DNR Wildlife Management Area and Prairie Bank programs), via interactions through Local Technical Teams. An internal fund has been established by The Nature Conservancy to cover ongoing land-management costs and property tax obligations. Income generated by agricultural leases (grazing, haying, and/or cropping) are held in this account and help offset property taxes.

151 acres of cropland were restored to diverse, local-ecotype grassland or grassland/wetland complex. Extensive effort was made to collect seed from local sources that cover the full season (early spring through late fall) needs of native pollinators. Seed sourcing included both mechanical and hand collection.

24,604 acres of grassland complex were enhanced on public lands and those purchased with OHF funds and held by the Conservancy ("protected conservation lands") to increase native species diversity and improve critical wildlife habitat. Management techniques included prescribed fire, removal of woody vegetation, control of invasive species, and inter-seeding of degraded grasslands. Much of this work was accomplished by private vendors through contracts. We also extensively used Conservation Corps of Minnesota (CCM) crews and seasonal staff employed directly by TNC.

On-the-ground Conservancy staff provided by this grant were co-located in DNR or US Fish and Wildlife Service offices and helped form and lead local coordination and implementation teams; identified protection, restoration and enhancement needs and opportunities within the focus areas; worked with DNR and USFWS staff to delineate conservation projects on public lands; coordinated deployment of contract and staff resources to protected conservation lands; contacted and worked with private landowners to coordinate agricultural activities/leases on appropriate protected conservation lands (e.g., haying, grazing, cropping in advance of restoration); educated lessees on appropriate conservation

How did the program address habitats of significant value for wildlife species of greatest conservation need, threatened or endangered species, and/or list targeted species?

Temperate grasslands are the most endangered and least protected habitat type on earth, and Minnesota's prairies are no exception. Activities identified in this project directly reflect implementation strategies identified in the MN Prairie Conservation Plan. Properties targeted for acquisition were identified and prioritized using MN County Biological Survey Rare Element Occurrences and Biodiversity Significance. The geographies we worked within, in addition to being Prairie Plan Core areas, reflect areas with the highest density and highest quality remaining prairie systems left in the state. By focusing our work in these particular landscapes we increased the functionality of the overall prairie/grassland systems, including increased water retention, improved breeding and nesting habitat and augmented migratory corridors. While our work focused on increasing and maintaining system functionality a number of individual species and suites of SPGCN directly benefited from this project including:

Insects - habitat management and protection specifically for the federally-threatened Dakota skipper butterfly, potential restoration of habitat for the endangered Poweshiek skipperling and the declining regal fritillary butterflies

Mammals - American badger (an indicator species requiring intact blocks of quality habitat), elk (for herd management in NW MN)

Reptiles - hognose snake (primarily in western MN counties of Lac qui Parle, Big Stone and Yellow Medicine), 5-lined skink (rock outcroppings in the upper MN River Valley)

Birds - Grassland dependent birds have experienced precipitous population decline across Minnesota and the northern Great Plains, largely due to habitat loss on the breeding grounds. This project will provide permanently protected and enhanced habitat for a suite of grassland and wetland nesting birds, most notably the Meadowlark, Bobolink, Dickcissel, Grasshopper sparrow, Henslow's sparrow, Upland sandpiper, Black tern, Northern pintail, Greater Prairie-chicken, Sharp-tail grouse, and many others.

How did the program use science-based targeting that leveraged or expanded corridors and complexes, reduced fragmentation, or protected areas in the MN County Biological Survey.

The project concentrated activities on core/corridor complexes as described in the MN Prairie Plan. The plan was developed using the best available information for identifying the highest quality/highest density remaining prairie and grassland complexes in the state. Individual parcels for protection were prioritized using the attached criteria. Important considerations included % of native prairie on tract; adjacency to other native prairie; proximity to other protected lands; and uniqueness and diversity of species present. MN County Biological Survey data and biodiversity rankings were additional key tools used to measure these criteria. Similarly, enhancement and restoration projects were focused on core/corridor areas identified within the Prairie

Conservation Plan. Individual parcels were selected in close consultation with state and federal partners to ensure the ultimate outcomes supported both Prairie Plan and individual agency goals for the relevant landscapes.

Explain Partners, Supporters, & Opposition

Working in partnership is a key component to the success of this project. Almost all of the enhancement work occurs on lands owned and managed by MN DNR or the US Fish & Wildlife Service. Further, the biologists who are responsible for on-the-ground implementation are stationed either in FWS or DNR offices. Finally, the Local Technical Teams organized under the MN Prairie Conservation Plan play a key role in prioritizing the protection, restoration and enhancement projects.

Acquisition projects are also evaluated in cooperation with partner goals to ensure the protection of individual parcels are contributing to the habitat values of larger prairie and wetland complexes.

Exceptional challenges, expectations, failures, opportunities, or unique aspects of program

A goal of the Program is to demonstrate that conservation activities can also produce revenues sufficient to offset management and property tax obligations. This model has proven insufficient, though generated revenues are a meaningful source of funds to meet property tax demands, accounting for approximately 1/3 of the funds needed for tax purposes. The remaining 2/3 obligation is met with private funds through TNC.

Much of the work in this phase was completed pre-pandemic and allowed for extensive use of one of our most effective and under utilized management tools - prescribed fire. Making extensive use of fire, particularly in NW MN, allowed us to vastly exceed our proposed enhancement goals and resulted in significant burns with landscape scale impact. Several of the implemented burns had been on the DNR "to-do" list for more than 20 years. Favorable conditions and available funding enabled us to get them done.

What other fund may contribute to this program?

- Other : TNC private funds

How were the funds used to advance the program?

Private TNC funds were used to meet operational costs brought on but not reimbursed by the grant. Further, TNC seasonal crews, biologists and equipment regularly supplemented Prairie Recovery seasonal crews in completing large projects, particularly prescribed fires.

What is the plan to sustain and/or maintain this work after the Outdoor Heritage Funds are expended?

The prairies of western Minnesota have historically been sustained through the regular application of disturbance regimes, including fire, grazing and haying. A chronic problem for land managers is securing adequate funding to do these conservation practices as frequently as needed (e.g., every 1-4 years). A primary purpose of this project was to establish a collaborative and coordinated partnership that can accelerate the application of these management techniques across multiple landscapes. On existing protected conservation lands, an annual infusion of funding will be required. For new lands acquired under this proposal, we attempted to establish a new funding model by securing partial management funds by generating conservation compatible income from acquired lands. In addition to the conservation value of planned haying and grazing, the income generated by these agricultural leases can help offset management costs and property taxes. And while these revenues have consistently proved to be inadequate to cover tax obligations they do offset a portion of the costs and the Conservancy remains committed to making up the difference.

Actions to Maintain Project Outcomes

Year	Source of Funds	Step 1	Step 2	Step 3
------	-----------------	--------	--------	--------

Annually	OHF/TNC	Monitor & treat invasive species	-	-
Once every 4-5 years	OHF/TNC	Prescribed fire	-	-
As ecologically dictated	OHF/TNC	Conservation grazing	-	-

Budget

Totals

Item	Requested	AP Amount	Spent	Antic. Leverage	Received Leverage	Leverage Source	Original Total	Final Total
Personnel	\$649,700	\$649,700	\$666,600	-	-	-	\$649,700	\$666,600
Contracts	\$800,000	\$1,083,000	\$1,097,100	-	-	-	\$800,000	\$1,097,100
Fee Acquisition w/ PILT	\$750,000	\$1,405,000	\$1,404,600	-	-	-	\$750,000	\$1,404,600
Fee Acquisition w/o PILT	\$1,134,700	\$77,700	\$77,300	\$226,900	\$15,500	TNC Private funds	\$1,361,600	\$92,800
Easement Acquisition	-	-	-	-	-	-	-	-
Easement Stewardship	-	-	-	-	-	-	-	-
Travel	\$49,700	\$49,700	\$35,200	-	-	-	\$49,700	\$35,200
Professional Services	\$69,000	\$76,000	\$76,500	-	-	-	\$69,000	\$76,500
Direct Support Services	\$147,400	\$147,400	\$158,300	\$206,300	\$206,300	TNC Private funds	\$353,700	\$364,600
DNR Land Acquisition Costs	\$5,000	\$30,000	\$30,000	-	-	-	\$5,000	\$30,000
Capital Equipment	\$30,000	\$30,000	\$26,200	-	-	-	\$30,000	\$26,200
Other Equipment/Tools	\$98,500	\$98,500	\$103,700	-	-	-	\$98,500	\$103,700
Supplies/Materials	\$298,000	\$160,000	\$131,500	-	-	-	\$298,000	\$131,500
DNR IDP	-	\$225,000	\$219,100	-	-	-	-	\$219,100
Grand Total	\$4,032,000	\$4,032,000	\$4,026,100	\$433,200	\$221,800	-	\$4,465,200	\$4,247,900

Personnel

Position	Annual FTE	Years Working	Funding Request	Antic. Leverage	Leverage Source	Total
Prairie Recovery Biologists	1.0	2.0	\$257,800	-	-	\$257,800
Grants Administrator	0.2	2.0	\$13,500	-	-	\$13,500
Contracts Administrator	0.1	2.0	\$22,600	-	-	\$22,600
TNC Science Staff	0.15	2.0	-	-	-	-
Protection Specialists	1.0	2.0	\$83,300	-	-	\$83,300
Seasonal Habitat Crews	4.0	2.0	\$184,300	-	-	\$184,300
TNC Land Stewards	0.2	2.0	\$58,500	-	-	\$58,500
Project Coordinator	0.25	2.0	\$46,600	-	-	\$46,600

Capital Equipment

Item	Funding Request	Antic. Leverage	Leverage Source	Total
Tracked Utility Task Vehicle	\$26,200	-	-	\$26,200

Direct Support Services

How did you determine which portions of the Direct Support Services of your shared support services is direct to this program?

Direct Support Services is based on our federal Negotiated Rate as approved by the US Dept of Interior.

Explain any budget challenges or successes:

2 unexpected fee w/PILT parcels required substantial budget amendments. The associated IDP funds took longer than anticipated to spend.

The shortfall in leverage for fee acquisition is a function of those amendments. For lands purchased w/out PILT obligation we deposit private funds amounting to 20% of the purchase price into a stewardship endowment to ensure we can manage and pay taxes in perpetuity. For lands transferred to another entity we don't deposit funds into this account. More land was purchased w/PILT obligation than proposed which resulted in a smaller amount going toward the stewardship endowment as leverage.

Total Revenue: \$14,506

Revenue Spent: \$14,506

Revenue Balance: \$0

Of the money disclosed above, what are the appropriate uses of the money:

- A. This revenue, or a portion of it, was used according to the appropriation purposes approved in the AP Forest.
- C. This revenue, or a portion of it, was transferred back to the OHF.

Itemize out how the revenues were spent:

Revenues were spent to pay property taxes. Excess revenues were deposited in an account and used to pay property taxes on OHF acquired properties. To date through the whole of the Prairie Recovery Program TNC has generated \$250,500 in revenues and paid \$568,272 in property taxes. The shortfall has been made up with TNC privately raised funds.

Output Tables

Acres by Resource Type (Table 1)

Type	Wetland (AP)	Wetland (Final)	Prairie (AP)	Prairie (Final)	Forest (AP)	Forest (Final)	Habitat (AP)	Habitat (Final)	Total Acres (AP)	Total Acres (Final)
Restore	25	0	125	151	0	0	0	0	150	151
Protect in Fee with State PILT Liability	100	108	200	391	0	0	0	0	300	499
Protect in Fee w/o State PILT Liability	175	0	325	40	0	0	0	0	500	40
Protect in Easement	0	0	0	0	0	0	0	0	0	0
Enhance	500	7,470	5,500	17,134	0	0	0	0	6,000	24,604
Total	800	7,578	6,150	17,716	0	0	0	0	6,950	25,294

How many of these Prairie acres are Native Prairie? (Table 1b)

Type	Native Prairie (AP)	Native Prairie (Final)
Restore	0	0
Protect in Fee with State PILT Liability	150	115
Protect in Fee w/o State PILT Liability	300	38
Protect in Easement	0	0
Enhance	2,000	8,600
Total	2,450	8,753

Total Requested Funding by Resource Type (Table 2)

Type	Wetland (AP)	Wetland (Final)	Prairie (AP)	Prairie (Final)	Forest (AP)	Forest (Final)	Habitat (AP)	Habitat (Final)	Total Funding (AP)	Total Funding (Final)
Restore	\$12,500	-	\$62,500	\$188,300	-	-	-	-	\$75,000	\$188,300
Protect in Fee with State PILT Liability	\$250,000	\$320,600	\$500,000	\$1,409,900	-	-	-	-	\$750,000	\$1,730,500
Protect in Fee w/o State PILT Liability	\$322,200	-	\$812,500	\$85,200	-	-	-	-	\$1,134,700	\$85,200
Protect in Easement	-	-	-	-	-	-	-	-	-	-
Enhance	\$160,000	\$613,900	\$1,912,300	\$1,408,200	-	-	-	-	\$2,072,300	\$2,022,100
Total	\$744,700	\$934,500	\$3,287,300	\$3,091,600	-	-	-	-	\$4,032,000	\$4,026,100

Acres within each Ecological Section (Table 3)

Type	Metro / Urban (AP)	Metro / Urban (Final)	Forest / Prairie (AP)	Forest / Prairie (Final)	SE Forest (AP)	SE Forest (Final)	Prairie (AP)	Prairie (Final)	N. Forest (AP)	N. Forest (Final)	Total (AP)	Total (Final)
Restore	0	0	50	0	0	0	100	151	0	0	150	151
Protect in Fee with State PILT Liability	0	0	150	0	0	0	150	499	0	0	300	499
Protect in	0	0	250	0	0	0	250	40	0	0	500	40

Fee w/o State PILT Liability												
Protect in Easement	0	0	0	0	0	0	0	0	0	0	0	0
Enhance	0	0	2,000	13,376	0	0	4,000	11,228	0	0	6,000	24,604
Total	0	0	2,450	13,376	0	0	4,500	11,918	0	0	6,950	25,294

Total Requested Funding within each Ecological Section (Table 4)

Type	Metro / Urban (AP)	Metro / Urban (Final)	Forest / Prairie (AP)	Forest / Prairie (Final)	SE Forest (AP)	SE Forest (Final)	Prairie (AP)	Prairie (Final)	N. Forest (AP)	N. Forest (Final)	Total (AP)	Total (Final)
Restore	-	-	\$25,000	-	-	-	\$50,000	\$188,300	-	-	\$75,000	\$188,300
Protect in Fee with State PILT Liability	-	-	\$375,000	-	-	-	\$375,000	\$1,730,500	-	-	\$750,000	\$1,730,500
Protect in Fee w/o State PILT Liability	-	-	\$567,300	-	-	-	\$567,400	\$85,200	-	-	\$1,134,700	\$85,200
Protect in Easement	-	-	-	-	-	-	-	-	-	-	-	-
Enhance	-	-	\$559,500	\$644,700	-	-	\$1,512,800	\$1,377,400	-	-	\$1,957,000	\$2,022,100
Total	-	-	\$2,072,300	\$644,700	-	-	\$2,482,300	\$3,381,400	-	-	\$4,032,000	\$4,026,100

Target Lake/Stream/River Feet or Miles

Outcomes

Programs in forest-prairie transition region:

- Remnant native prairies are part of large complexes of restored prairies, grasslands, and large and small wetlands ~ *Remnant native prairies are part of large complexes of restored prairies, grasslands and large and small wetlands ~ Protection results are being measured against MN Prairie Conservation Plan goals for protected acres of native prairie and associated grassland for the core and corridor geographies in which they are located. Enhancement results are being measured using protocols developed for the multi-agency Grassland Monitoring Network and contribute to the overall measures called for in the Prairie Conservation Plan.*

Programs in prairie region:

- Remnant native prairies are part of large complexes of restored prairies, grasslands, and large and small wetlands ~ *Remnant native prairies are part of large complexes of restored prairies, grasslands and large and small wetlands ~ Protection results are being measured against MN Prairie Conservation Plan goals for protected acres of native prairie and associated grassland for the core and corridor geographies in which they are located. Enhancement results are being measured using protocols developed for the multi-agency Grassland Monitoring Network and contribute to the overall measures called for in the Prairie Conservation Plan.*

Parcels

Sign-up Criteria?

No

Restore / Enhance Parcels

Name	County	TRDS	Acres	Est Cost	Existing Protection
Lee Marshes WPA	Becker	14042230	1	\$500	Yes
Headquarters WPA	Becker	13941215	1	\$2,500	Yes
Matter WPA	Becker	14142231	2	\$500	Yes
Audubon WPA	Becker	13942215	27	\$4,100	Yes
Balke Lake WPA	Becker	14143225	43	\$6,500	Yes
Hamden Slough NWR	Becker	13942211	21	\$3,200	Yes
Dibley WPA	Becker	14042234	1	\$500	Yes
Bay Lake WPA	Becker	14042209	1	\$500	Yes
Buchl WPA	Becker	14142210	257	\$48,600	Yes
Buchl WPA	Becker	14142203	156	\$28,000	Yes
Kent WPA	Becker	14241209	1	\$500	Yes
Donley Tilman WPA	Becker	14142213	3	\$500	Yes
Pederson WPA	Becker	14241229	2	\$500	Yes
Big Stone National Wildlife Refuge	Big Stone	12146226	38	\$7,600	Yes
Thielke Lake WMA	Big Stone	12246211	12	\$15,000	Yes
Lindquist WMA	Big Stone	12245233	6	\$2,500	Yes
Steen WMA	Big Stone	12346231	1	\$500	Yes
Hillman WPA	Big Stone	12145215	180	\$21,000	Yes
Victory WMA	Big Stone	12245231	11	\$5,000	Yes
Kufrin WPA	Big Stone	12245222	20	\$5,000	Yes
Reisdorph WMA	Big Stone	12246226	7	\$8,800	Yes
Reisdorph WMA	Big Stone	12246226	25	\$4,500	Yes
Big Stone WMA	Big Stone	12246218	8	\$1,600	Yes
Big Stone National Wildlife Refuge	Big Stone	12246226	5	\$800	Yes
Artichoke WPA	Big Stone	12244204	1	\$500	Yes
Helgeson WPA	Big Stone	12145206	77	\$11,600	Yes
Victory WMA	Big Stone	12245231	281	\$42,200	Yes
Reisdorph WMA	Big Stone	12246226	30	\$15,000	Yes
Lac qui Parle WMA	Chippewa	11943213	11	\$5,500	Yes
Lac qui Parle WMA	Chippewa	11842202	28	\$14,000	Yes
Eide WPA	Clay	14144221	1	\$500	Yes
Bluestem Prairie - Seter	Clay	13946224	6	\$1,000	Yes
Bluestem Prairie - Schlauderaff	Clay	13846201	3	\$1,000	Yes
Bluestem Prairie - Seter	Clay	13946224	15	\$2,300	Yes
Twin Valley Prairie - Erickson 2	Clay	14245209	3	\$1,500	Yes
Blazing Star Prairie - Erickson 1	Clay	14245228	9	\$1,800	Yes
Twin Valley Prairie - Cont. Leasing	Clay	14245204	5	\$2,500	Yes
Flora Lake WPA	Clay	14044204	4	\$2,000	Yes
Spring Prairie	Clay	14046222	11	\$2,500	Yes
Bluestem Prairie - West	Clay	13946235	10	\$2,000	Yes
Twin Valley Prairie - Erickson 2	Clay	14245209	78	\$3,900	Yes
Hoykens WPA	Clay	14044220	6	\$3,500	Yes
Bluestem Prairie - Nalewaja	Clay	13845218	12	\$1,800	Yes
Melby WPA	Clay	14145226	1	\$500	Yes
Goose Lake WPA	Clay	14144216	2	\$1,500	Yes
Twin Valley Prairie - Cont. Leasing	Clay	14245204	240	\$36,000	Yes
Tatie Lake WPA	Clay	14145236	2	\$500	Yes
Bluestem Prairie - Larson	Clay	13946225	17	\$1,700	Yes
Blazing Star Prairie - C. Erickson	Clay	14245227	1	\$1,000	Yes

Blazing Star Prairie - Erickson 1	Clay	14245228	5	\$800	Yes
Blazing Star Prairie - Mjolsness	Clay	14245233	15	\$2,300	Yes
Twin Valley Prairie - Cont. Leasing	Clay	14245204	1	\$500	Yes
Blazing Star Prairie - Mjolsness	Clay	14245233	318	\$47,700	Yes
Jarvis WPA	Clay	14044205	5	\$3,500	Yes
Hatchet Lake WPA	Clay	14045206	3	\$2,500	Yes
Twin Valley Prairie - Cont. Leasing	Clay	14245204	7	\$2,500	Yes
Anderson WPA	Clay	14044218	12	\$1,800	Yes
Hitterdal WPA	Clay	14044205	5	\$3,500	Yes
Melby WPA	Clay	14145226	77	\$8,900	Yes
Flickertail Prairie WPA	Clay	14245235	321	\$16,000	Yes
Kenyon WPA	Clay	13845212	345	\$17,300	Yes
Spring Prairie	Clay	14046222	144	\$16,600	Yes
Hoykens WPA	Clay	14044220	468	\$23,400	Yes
Bluestem Prairie - Nalewaja	Clay	13845218	1	\$1,000	Yes
Blazing Star Prairie - C. Erickson	Clay	14245227	2	\$1,000	Yes
Blazing Star Prairie - Mjolsness	Clay	14245233	4	\$1,000	Yes
Spring Prairie	Clay	14046222	160	\$32,000	Yes
Brenner Lake WPA	Kandiyohi	12236206	178	\$35,600	Yes
Cabin Rock WMA	Kandiyohi	12236232	1	\$500	Yes
Cabin Rock WMA	Kandiyohi	12236232	10	\$2,000	Yes
Oleander WMA	Kandiyohi	12236215	1	\$1,000	Yes
Miller Hills WPA	Kandiyohi	12235210	1	\$1,000	Yes
Oleander WMA	Kandiyohi	12236215	1	\$500	Yes
Ella Lake WPA	Kandiyohi	11933227	141	\$16,200	Yes
Miller Hills WPA	Kandiyohi	12235210	7	\$2,500	Yes
Woolcott WPA	Kandiyohi	12235207	21	\$3,500	Yes
Whitefield WMA	Kandiyohi	11835215	5	\$2,500	Yes
Miller Hills WPA	Kandiyohi	12235210	1	\$2,500	Yes
Brenner Lake WPA	Kandiyohi	12236206	1	\$1,300	Yes
Freese WPA	Kandiyohi	12236211	19	\$5,000	Yes
Ringo Nest WMA	Kandiyohi	12134230	1	\$500	Yes
Ringo Nest WMA	Kandiyohi	12134230	1	\$1,300	Yes
Ringo Nest WMA	Kandiyohi	12134230	97	\$14,600	Yes
Regal Meadows Roguske	Kandiyohi	12233209	94	\$14,100	Yes
Regal Meadows	Kandiyohi	12233216	11	\$7,500	Yes
Randall WPA	Kandiyohi	12236209	54	\$10,800	Yes
Randall WPA	Kandiyohi	12236209	3	\$1,500	Yes
Oleander WMA	Kandiyohi	12236215	71	\$14,200	Yes
Beaches Lake WMA	Kittson	16145206	10	\$1,500	Yes
Pelan WMA - North	Kittson	16045216	497	\$37,300	Yes
Beaches Lake WMA - Big	Kittson	16245219	2,602	\$91,070	Yes
Beaches Lake WMA - blackline	Kittson	16245231	10	\$1,500	Yes
Skull Lake WMA - skully	Kittson	16347223	16	\$7,500	Yes
Skull Lake WMA - NE	Kittson	16347212	521	\$26,000	Yes
Twin Lakes WMA - s of Sanctuary	Kittson	15945216	322	\$37,000	Yes
Skull Lake WMA	Kittson	16347210	15	\$3,500	Yes
Pelan WMA	Kittson	16045215	1	\$500	Yes
Twin Lakes WMA	Kittson	15945215	1	\$500	Yes
Skull Lake Addition (TNC)	Kittson	16346207	5	\$2,500	Yes
Caribou WMA South Pastures	Kittson	16345217	1,273	\$44,500	Yes
Skull Lake WMA- Central NW	Kittson	16347214	54	\$7,500	Yes
Dakota WPA	Lac qui Parle	11446205	81	\$16,000	Yes
Lac qui Parle WMA	Lac qui Parle	11842233	12	\$2,500	Yes
Pearson WPA	Lac qui Parle	11646215	13	\$3,000	Yes
Salt Lake WMA	Lac qui Parle	11746205	146	\$29,200	Yes
Colbert WPA	Lac qui Parle	11744232	9	\$2,000	Yes
Plover Prairie - Hanson	Lac qui Parle	12045215	2	\$500	Yes

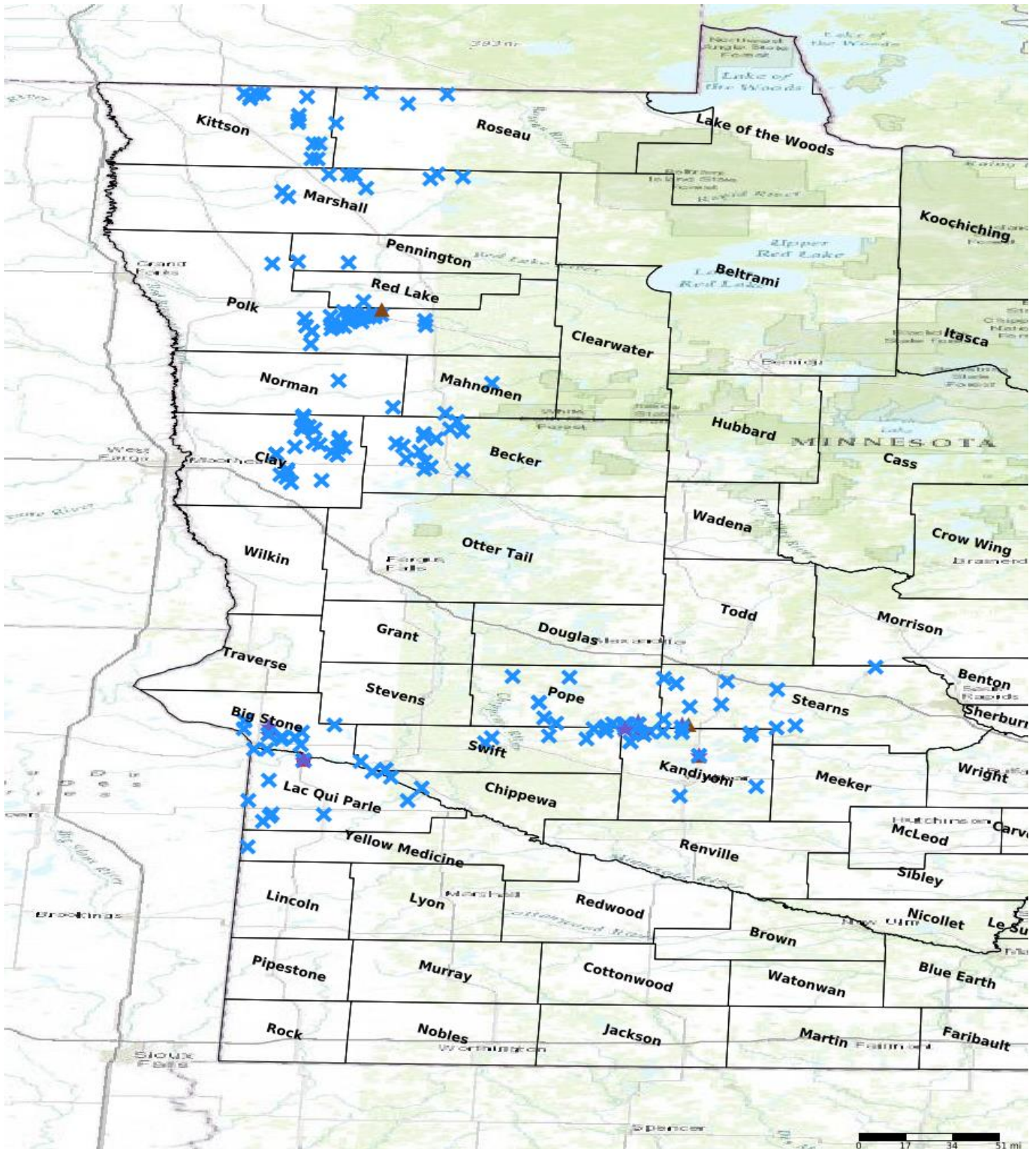
Plover Prairie - Hanson	Lac qui Parle	12045215	19	\$5,000	Yes
Sweetwater WMA	Lac qui Parle	11746236	2	\$1,000	Yes
Big Stone National Wildlife Refuge	Lac qui Parle	12146228	167	\$33,400	Yes
Walter WMA	Lac qui Parle	11946226	6	\$2,500	Yes
Hegland WPA	Lac qui Parle	11943204	37	\$7,400	Yes
Plover Prairie - Hanson	Lac qui Parle	12045215	71	\$8,200	Yes
Sweetwater WMA	Lac qui Parle	11646202	53	\$26,500	Yes
Plover Prairie - Hanson	Lac qui Parle	12045215	32	\$16,000	Yes
Plover Prairie - Hanson	Lac qui Parle	12045215	39	\$48,800	Yes
White Earth WPA	Mahnomen	14241234	4	\$2,500	Yes
Waubun WPA	Mahnomen	14341230	8	\$2,500	Yes
Moore Lake WPA	Mahnomen	14343214	2	\$1,500	Yes
Edwin Lake WPA	Mahnomen	14540229	2	\$500	Yes
Wright WMA	Marshall	15746236	1	\$500	Yes
Thief Lake WMA	Marshall	15842222	25	\$7,500	Yes
Thief Lake WMA 19-3	Marshall	15842211	65	\$7,500	Yes
Florian Addition	Marshall	15746223	1	\$500	Yes
Florian Addition (TNC)	Marshall	15746223	80	\$16,000	Yes
East Park WMA	Marshall	15844215	90	\$13,500	Yes
East Park WMA NE	Marshall	15844216	1,229	\$43,000	Yes
East Park WMA	Marshall	15844215	45	\$7,500	Yes
East Park WMA	Marshall	15845213	1	\$500	Yes
New Maine WMA	Marshall	15744212	1	\$500	Yes
Thief Lake WMA WR132	Marshall	15841216	96	\$11,000	Yes
Meadowlark WPA	Norman	14544229	20	\$5,000	Yes
Higinbothum WMA North	Pennington	15244204	101	\$18,000	Yes
Pembina WMA - South Unit	Pennington	15245206	1,252	\$43,800	Yes
Glacial Ridge NWR	Polk	14844207	57	\$8,600	Yes
Burnham Creek WMA	Polk	14845201	6	\$2,000	Yes
Polk WMA	Polk	14842204	1	\$500	Yes
Glacial Ridge NWR	Polk	14944227	14	\$3,500	Yes
North Belgium (TNC)	Polk	15246209	150	\$22,500	Yes
Crookston SNA	Polk	14944219	134	\$25,400	Yes
Glacial Ridge NWR	Polk	14944222	52	\$7,800	Yes
Glacial Ridge NWR	Polk	14944236	8	\$2,500	Yes
Glacial Ridge NWR	Polk	14943220	1	\$500	Yes
Glacial Ridge NWR	Polk	14943219	44	\$6,600	Yes
Glacial Ridge NWR	Polk	14944226	9	\$2,500	Yes
Glacial Ridge NWR	Polk	14944223	14	\$2,500	Yes
Glacial Ridge NWR	Polk	14943217	3	\$1,000	Yes
Glacial Ridge NWR	Polk	14944215	3	\$1,000	Yes
Glacial Ridge NWR	Polk	14944227	31	\$4,700	Yes
Liberty WMA	Polk	14745216	1	\$500	Yes
Thorson Prairie WMA	Polk	14845208	1	\$500	Yes
Tympanuchus WMA	Polk	14945228	1	\$1,500	Yes
Chicog WMA	Polk	14845221	1	\$500	Yes
Glacial Ridge NWR	Polk	14943219	25	\$5,000	Yes
Mentor Prairie WMA	Polk	14943216	3	\$1,500	Yes
Glacial Ridge NWR	Polk	14944223	1	\$500	Yes
Chicog WMA	Polk	14845221	3	\$500	Yes
Erskine WMA	Polk	14942227	3	\$500	Yes
Dugdale WMA	Polk	14944234	101	\$15,100	Yes
Glacial Ridge NWR	Polk	14943219	36	\$5,400	Yes
Trail WMA	Polk	14845213	8	\$2,500	Yes
Glacial Ridge NWR	Polk	14944224	2	\$1,000	Yes
Glacial Ridge NWR	Polk	14944214	20	\$3,000	Yes
Glacial Ridge NWR	Polk	14844208	7	\$2,000	Yes
Glacial Ridge NWR	Polk	14944222	9	\$2,500	Yes

Glacial Ridge NWR	Polk	14944209	1,084	\$163,000	Yes
Ann Lake WPA	Pope	12638227	26	\$5,200	Yes
Lake Johanna Esker	Pope	12336228	650	\$48,700	Yes
Ordway Burnette	Pope	12336231	40	\$6,000	Yes
Sheepberry Fen	Pope	12337226	40	\$7,500	Yes
Ordway Prairie - Sandvig	Pope	12439214	35	\$5,000	Yes
Ordway Preserve	Pope	12336230	242	\$27,800	Yes
McIver WPA	Pope	12639230	36	\$7,200	Yes
Ordway Prairie - Sandvig	Pope	12439214	5	\$2,500	Yes
Benson Lake WPA	Pope	12339213	9	\$1,800	Yes
Simon Lake WMA	Pope	12337234	91	\$13,700	Yes
Lake Simon WPA	Pope	12237205	54	\$6,200	Yes
Lake Johanna Esker	Pope	12336228	43	\$8,600	Yes
Rolling Forks WPA	Pope	12338229	342	\$68,400	Yes
Lake Johanna Esker	Pope	12336221	37	\$46,300	Yes
Lake Johanna Esker	Pope	12336228	45	\$6,700	Yes
Lake Johanna Esker	Pope	12336228	171	\$20,000	Yes
Little Joe WMA	Pope	12336228	52	\$7,800	Yes
Ordway Burnette	Pope	12336231	2	\$1,500	Yes
Ordway Knutson	Pope	12336230	62	\$17,500	Yes
Marcoux WMA	Red Lake	15044224	15	\$3,500	Yes
Bonasa WMA	Roseau	16144206	1	\$1,000	Yes
Roseau River WMA Whitney	Roseau	16343225	1,137	\$59,800	Yes
Roseau River WMA pool 3	Roseau	16344201	3,751	\$131,300	Yes
Roseau River WMA	Roseau	16342201	160	\$18,400	Yes
Crow Lake WPA	Stearns	12335227	53	\$66,300	Yes
Mel Roehrl WMA	Stearns	12535204	28	\$4,200	Yes
Happy Valley WMA	Stearns	12730234	17	\$5,000	Yes
Miller Spring WMA	Stearns	12332227	35	\$7,500	Yes
Mel Roehrl WMA	Stearns	12535204	64	\$7,500	Yes
Norman Dahlman WMA	Stearns	12335234	190	\$28,500	Yes
Sauk River WMA	Stearns	12634235	39	\$10,800	Yes
Tamarac WMA	Stearns	12335218	30	\$6,000	Yes
Victor Winter WMA	Stearns	12635230	39	\$7,500	Yes
Vision WMA	Stearns	12434215	70	\$7,500	Yes
Zion WMA	Stearns	12332231	35	\$7,500	Yes
North Fork WMA	Stearns	12435223	9	\$7,500	Yes
Christopher Kurilla WMA	Stearns	12532218	50	\$7,500	Yes
Svor WPA	Swift	12238219	689	\$34,500	Yes
Lynch Lake WPA	Swift	12240227	3	\$1,500	Yes
Danvers WMA	Swift	12140204	32	\$16,000	Yes
Chippewa Prairie - Telford	Swift	12043235	55	\$11,000	Yes
Chippewa Prairie - Telford	Swift	12043235	915	\$52,000	Yes
Big Slough WPA	Swift	12237210	10	\$5,000	Yes
Chippewa Prairie - Telford	Swift	12043235	39	\$19,500	Yes
Camp Kerk WMA	Swift	12237230	51	\$7,700	Yes
Lac qui Parle WMA	Swift	12043218	191	\$22,000	Yes

Protect Parcels

Name	County	TRDS	Acres	Est Cost	Existing Protection
Ringo Nest WMA addition	Kandiyohi	12134230	215	\$616,400	No
Plover Prairie addition	Lac qui Parle	12045215	39	\$85,200	No
Mentor Prairie complex #1	Polk	14943204	15	\$21,000	No
Dahlman WMA addition	Stearns	12335226	256	\$889,200	No

Parcel Map



- Protect in Easement
- ▲ Protect in Fee with PILT
- ▲ Protect in Fee W/O PILT
- ★ Restore
- ✕ Enhance
- ✕ Other