

# Request for Funding

## Lessard-Sams Outdoor Heritage Council Fiscal Year 2015 / ML 2014

**Program or Project Title:** Preventing Forest Fragmentation and Protecting and Restoring Lake and Stream Habitat in the St. Louis River Watershed

**Funds Requested: \$2,924,000**

**Manager's Name:** Thomas Howes

**Title:** Natural Resources Manager

**Organization:** Fond du Lac Band of Lake Superior Chippewa

**Street Address:** 1720 Big Lake Road

**City:** Cloquet, MN 55720

**Telephone:** 218-878-7163

**E-Mail:** thomashowes@fdlrez.com

**Organization Web Site:** www.fdlrez.com

**County Locations:** No Counties Listed

### Ecological Planning Regions:

- Northern Forest

### Activity Type:

- Protect in Fee

### Priority Resources Addressed by Activity:

- Wetlands
- Forest
- Prairie
- Habitat

## Abstract:

This project will prevent forest fragmentation and protect and restore lake and stream habitat in the St. Louis River watershed through the fee acquisition of 956 acres and the restoration and enhancement of 271 acres of forests, prairie, and wetlands.

## Design and Scope of Work:

The Fond du Lac Band of Lake Superior Chippewa is pleased to present this proposal to prevent forest fragmentation and to protect and restore lake and stream habitat in the St. Louis River watershed through the fee acquisition of 956 acres and the restoration and enhancement of 271 acres of forests, prairie, and wetlands. This project includes acquisition of a 440-acre priority property containing an 80-acre lake, acquisition of 280 acres along a tributary to the St. Louis River, and acquisition of 236 acres with 2,000 linear feet along the main stem of the St. Louis River. This project will protect the water quality of the St. Louis River, provide opportunities for public fishing and hunting, and prevent forest fragmentation.

### **I. Acquiring the 440-Acre Priority Property: Chi-wizo zaaga'iganing (Simian Lake)**

The priority for this project is the acquisition of a 440-acre property ("Priority Property"), which is one of the largest privately owned properties within the Fond du Lac Reservation and is being marketed by a real estate

broker. The Priority Property contains 83 acres of wetlands and an 80-acre lake, Chi-wizo zaaga'iganing (also known as Simian Lake), which is classified as a high-priority fishery and drains into the St. Louis River. Preventing development of this lake will contribute to the restoration efforts of the St. Louis River by eliminating potential sources of sediment and nutrient loads.

The Priority Property will be open to tribal and non-tribal members for public recreational fishing and general public hunting. By purchasing the Priority Property in its entirety, the Fond du Lac Band will prevent fragmentation of the 194 acres of forest habitat on the Property.

## **II. Restoring and Enhancing Forests, Prairie, and Wetlands on the Priority Property**

The Fond du Lac Band will perform extensive restoration and enhancement activities to improve the quality of the forests, prairie, and wetlands on the Priority Property. Two hundred twenty acres of uplands will be restored or enhanced as forests or prairie. Twenty-one acres of wetlands will be restored and another 30 acres of wetlands will be enhanced by improving the hydrologic flow by filling in ditches and removing compacted soil impeding waterflow. The wetlands will be managed to control invasive species.

## **III. Acquiring 280 Acres Along the Simian Creek Riparian Corridor**

Simian Creek flows north from the Priority Parcel for approximately 3.6 miles before its confluence with the St. Louis River. For 1.8 miles, Simian Creek flows through several properties in private ownership (the "Riparian Properties"). Protecting the Riparian Properties will provide public control of the entire riparian corridor to the confluence with the St. Louis River. This will facilitate the management of the watershed to reduce sediment and nutrient loads into the St. Louis River.

## **IV. Acquiring 236 Acres Along the Main Stem of the St. Louis River**

The Fond du Lac Band will also acquire 236 acres containing 2,000 linear feet along the main stem of the St. Louis River. This acquisition will further consolidate public ownership and facilitate restoration efforts along the St. Louis River.

## **V. The Fond du Lac Band Has Substantial Expertise in Land Management and an Extensive History of Collaboration with Other Conservation Partners**

The Fond du Lac Reservation's boundary encompasses more than 101,000 acres, including 3,000 acres of lakes, nearly 44,000 acres of wetlands, 96 miles of rivers and streams, and over 28,000 acres of forests. The Fond du Lac Band has an annual budget of \$4 million to manage and conserve its natural resources. In 2008, the Fond du Lac Band adopted an Integrated Resource Management Plan to guide its work and establish priorities. This project addresses the priorities of this Plan.

Since the 1990s, the Fond du Lac Band has worked closely with the Natural Resources Conservation Service to restore over 250 acres of wild rice habitat. The Band is an active participant in the restoration of the St. Louis River through its work with the citizens' group St. Louis River Alliance and the Lake Superior National Estuarine Research Reserve. The Band has received grants from the U.S. Fish and Wildlife Service ("USFWS") for lake sturgeon restoration, wild rice restoration, and moose population research. The Band partners with Minnesota DNR on a variety of activities, including fisheries and wildlife surveys.

LSOHC grant funds will not supplant existing Band funds. Instead, the grant will enable the Band to expand its conservation work and achieve long-standing priorities.

## **VI. The Fond du Lac Band Will Coordinate with Conservation Partners**

Access to the Priority Parcel and to the lake will be available to both tribal and non-tribal members for public fishing and hunting. The Band will manage the resources to sustain healthy fish and wildlife populations. The Band will coordinate this project with other conservation partners, including DNR, NRCS, USFWS, and others.

## **VII. Fee-to-Trust Process**

After the Fond du Lac Band acquires the project properties, it will seek to transfer the land from "fee land" to "trust land" in which the fee title is held by the United States government, while the Fond du Lac Band retains the beneficial use of and full management responsibilities for the land. The federal government established the fee-to-trust process in the 1930s to correct other federal policies that led to the loss of tribal lands. It is an overriding policy objective of the federal government to move tribal land into trust status. Once tribal land is in trust status, it cannot be sold.

For the LSOHC, the fee-to-trust process has a significant advantage because it ensures that the land cannot be transferred to another party and that the Fond du Lac Band will have permanent management responsibilities for the land. The Fond du Lac Band is well aware that, to receive LSOHC funds, restrictions will be placed on the title to the land to be acquired to permanently protect the natural resources. These restrictions will continue to remain in place even after the land is in trust status.

## Planning

### **MN State-wide Conservation Plan Priorities:**

- H2 Protect critical shoreland of streams and lakes
- H3 Improve connectivity and access to recreation
- H4 Restore and protect shallow lakes
- H5 Restore land, wetlands and wetland-associated watersheds
- H7 Keep water on the landscape
- LU8 Protect large blocks of forest land

### **Plans Addressed:**

- Lower St. Louis River Habitat Plan
- Managing Minnesota's Shallow Lakes for Waterfowl and Wildlife
- Minnesota DNR Strategic Conservation Agenda
- State Comprehensive Outdoor Recreation Plan
- 2008 Integrated Resource Management Plan, Fond du Lac Band of Lake Superior Chippewa

### **LSOHC Statewide Priorities:**

- Are ongoing, successful, transparent and accountable programs addressing actions and targets of one or more of the ecological sections
- Produce multiple enduring conservation benefits
- Provide Minnesotans with greater public access to outdoor environments with hunting, fishing and other outdoor recreation opportunities

### **LSOHC Northern Forest Section Priorities:**

- Protect shoreland and restore or enhance critical habitat on wild rice lakes, shallow lakes, cold water lakes, streams and rivers, and spawning areas
- Restore forest-based wildlife habitat that has experienced substantial decline in area in recent decades

## Relationship to Other Constitutional Funds:

- No Relationships Listed

## Accelerates or Supplements Current Efforts:

A LSOHC grant will not displace existing Fond du Lac Band funding for conservation and natural resource management. Instead, the LSOHC grant will enable the Band to accelerate and expand its conservation efforts.

Since the 1990s, the Fond du Lac Band has done extensive conservation work near the Chi-wizo zaga'iganing (Simian Lake) project area to protect the Stoney Brook sub-watershed of the St. Louis River. This conservation work includes restoring hundreds of acres of wild rice habitat on nearby lakes and is detailed in the Band's 2008 Integrated Resource Management Plan. Receiving the LSOHC grant will enable the Band to seize the unique opportunity that was created when the 440-acre property encompassing Chi-wizo zaaga'iganing (Simian Lake) was put up for sale. The Band will continue with its current restoration efforts on wild rice lakes and its other conservation efforts in the Stoney Brook sub-watershed.

## Sustainability and Maintenance:

The Fond du Lac Band has the personnel and financial resources to manage properly the 956 acres that will be acquired, restored, and enhanced through this project. The Fond du Lac Band has a \$4 million annual budget for natural resources management. Its natural resources staff includes 62 full-time employees and 30-40 seasonal staff, who are responsible for managing 100,000 acres within the Fond du Lac Reservation and for providing conservation services throughout historic Chippewa territories in Wisconsin and Michigan. The existing staff will be able to integrate the responsibilities for the project area into its work assignments.

The Band's staff includes a Forester, Fisheries Biologist, Wildlife Biologist, Wetlands Specialist, Watershed Specialist, and Natural Resources Manager, who together will develop a stewardship plan for the project area, including protocol for controlling invasive species and conducting prescribed burns. In addition to its own funds, the Band will seek grants from NRCS, FWS, and U.S. EPA, which have awarded the Fond du Lac Band grants in the past for conservation work.

## Government Approval:

*Will local government approval be sought prior to acquisition?* - **Yes**

## Permanent Protection:

*Is the land you plan to acquire free of any other permanent protection?* - **Yes**

## Hunting and Fishing Plan:

*Is this land open for hunting and fishing?* - **Yes**

The Fond du Lac Band's culture is strongly linked to hunting and fishing. Hunting and fishing will be regulated on the properties to be acquired the same way these activities are regulated throughout northeast Minnesota. In this region, there is a shared DNR-tribal system of regulations where tribal members are subject to tribal regulations and non-tribal members are subject to DNR regulations. This shared system is the result of hunting, fishing, and gathering rights that the Band retains under treaties with the federal government.

The Fond du Lac Band is deeply committed to sustainably managing natural resources. Below are links to the Band's hunting and fishing regulations:

2012-13 Hunting and Trapping Season:

<http://www.fdlrez.com/newnr/2012-2013%20Seasons%20and%20Limits.pdf>

2013 Fishing Season and Limits:

<http://www.fdlrez.com/newnr/2013%20Fishing%20Seasons%20and%20Limits.pdf>

2013 Spring Turkey Season and Limits:

<http://www.fdlrez.com/newnr/2013%20Spring%20Turkey%20Seasons.pdf>

The Fond du Lac Band understands and respects the diversity of perspectives on wolf hunting. The Fond du Lac Band also understands and respects the constitutional requirement that land acquired with Outdoor Heritage Fund monies be open to public fishing and hunting unless otherwise provided by law. Traditional Ojibwe culture teaches that the wolf was created to be man's companion and the fate of one is linked with the fate of the other. We believe that a balanced approach to this issue requires respecting traditional Ojibwe culture. We request that there be no wolf hunting on Band property within the boundaries of the Reservation.

## Accomplishment Timeline

Activity	Approximate Date Completed
Negotiate with the landowners of the 440-acre Priority Property encompassing Chi-wizo zaagaiganing (Simian Lake) and the St. Louis River Main Stem Property and enter into purchase agreements	August 1, 2014
Complete due diligence for the acquisition of the Priority Property and St. Louis River Main Stem Property	November 1, 2014
Negotiate with the landowners of the Riparian Properties and enter purchase agreements	December 1, 2014
Acquire fee title to the Priority Property and the St. Louis River Main Stem Property	February 1, 2015
Complete due diligence for the acquisition of the Riparian Properties	April 1, 2015
Develop Forest, Prairie, and Wetland Restoration and Enhancement Plan for the Priority Property	June 1, 2015
Begin implementing the Restoration and Enhancement Plan for the Priority Property	September 1, 2015
Acquire fee title to the Riparian Properties	December 1, 2015
Complete implementation of the Restoration and Enhancement Plan for the Priority Property	July 1, 2018

## Outcomes

### Programs in the northern forest region:

- Forestlands are protected from development and fragmentation *The nearly 400 total acres of forestland at the project sites will be measured against a baseline year as to age classification and diversity of tree types.*
- Healthy populations of endangered, threatened, and special concern species as well as more common species *Periodic surveys will be conducted at Simian Lake, Simian Creek, and upland areas to evaluate the size and biodiversity of plant and animal populations.*
- Improved aquatic habitat indicators *Species surveys and water quality sampling will be conducted at Simian Lake and Simian Creek along with existing sampling of the St. Louis River.*
- Increased availability and improved condition of riparian forests and other habitat corridors *The age class and diversity of tree times in the riparian corridor will be measured against a baseline year.*
- Greater public access for wildlife and outdoors-related recreation *Number of visitors will be measured by car counts in parking lots, school visits, and game harvest registrations.*

## Budget Spreadsheet

**Total Amount of Request: \$2,924,000**

### Budget and Cash Leverage

Budget Name	LSOHC Request	Anticipated Leverage	Leverage Source	Total
Personnel	\$0	\$557,400		\$557,400
Contracts	\$146,000	\$0		\$146,000
Fee Acquisition w/ PILT	\$0	\$0		\$0
Fee Acquisition w/o PILT	\$2,758,000	\$0		\$2,758,000
Easement Acquisition	\$0	\$0		\$0
Easement Stewardship	\$0	\$0		\$0
Travel	\$0	\$0		\$0
Professional Services	\$17,000	\$17,000	FDL Band	\$34,000
Direct Support Services	\$0	\$0		\$0
DNR Land Acquisition Costs	\$0	\$0		\$0
Capital Equipment	\$0	\$0		\$0
Other Equipment/Tools	\$0	\$0		\$0
Supplies/Materials	\$3,000	\$0		\$3,000
DNR IDP	\$0	\$0		\$0
Total	\$2,924,000	\$574,400	-	\$3,498,400

### Personnel

Position	FTE	Over # of years	LSOHC Request	Anticipated Leverage	Leverage Source	Total
Fisheries Biologist	0.20	5.00	\$0	\$54,000	Fond du Lac Band	\$54,000
Wildlife Biologist	0.20	5.00	\$0	\$54,000	Fond du Lac Band	\$54,000
Natural Resources Manager	0.15	5.00	\$0	\$58,500	Fond du Lac Band	\$58,500
Forester	0.15	5.00	\$0	\$45,000	Fond du Lac Band	\$45,000
Fire Crew Supervisor	0.20	5.00	\$0	\$38,400	Fond du Lac Band	\$38,400
Fire Crew (3)	0.60	5.00	\$0	\$90,000	Fond du Lac Band	\$90,000
Watershed Specialist	0.20	5.00	\$0	\$42,000	Fond du Lac Band	\$42,000
Conservation Officers (3)	0.20	5.00	\$0	\$126,000	Fond du Lac Band	\$126,000
Wetland Specialist	0.30	5.00	\$0	\$49,500	US EPA	\$49,500
Total	2.20	45.00	\$0	\$557,400	-	\$557,400

## Output Tables

**Table 1. Acres by Resource Type**

Type	Wetlands	Prairies	Forest	Habitats	Total
Restore	0	0	0	0	0
Protect in Fee with State PILT Liability	0	0	0	0	0
Protect in Fee W/O State PILT Liability	83	26	436	411	956
Protect in Easement	0	0	0	0	0
Enhance	0	0	0	0	0
Total	83	26	436	411	956

**Table 2. Total Requested Funding by Resource Type**

Type	Wetlands	Prairies	Forest	Habitats	Total
Restore	\$0	\$0	\$0	\$0	\$0
Protect in Fee with State PILT Liability	\$0	\$0	\$0	\$0	\$0
Protect in Fee W/O State PILT Liability	\$361,000	\$113,000	\$1,445,000	\$1,005,000	\$2,924,000
Protect in Easement	\$0	\$0	\$0	\$0	\$0
Enhance	\$0	\$0	\$0	\$0	\$0
Total	\$361,000	\$113,000	\$1,445,000	\$1,005,000	\$2,924,000

**Table 3. Acres within each Ecological Section**

Type	Metro/Urban	Forest/Prairie	SE Forest	Prairie	Northern Forest	Total
Restore	0	0	0	0	0	0
Protect in Fee with State PILT Liability	0	0	0	0	0	0
Protect in Fee W/O State PILT Liability	0	0	0	0	956	956
Protect in Easement	0	0	0	0	0	0
Enhance	0	0	0	0	0	0
Total	0	0	0	0	956	956

**Table 4. Total Requested Funding within each Ecological Section**

Type	Metro/Urban	Forest/Prairie	SE Forest	Prairie	Northern Forest	Total
Restore	\$0	\$0	\$0	\$0	\$0	\$0
Protect in Fee with State PILT Liability	\$0	\$0	\$0	\$0	\$0	\$0
Protect in Fee W/O State PILT Liability	\$0	\$0	\$0	\$0	\$2,924,000	\$2,924,000
Protect in Easement	\$0	\$0	\$0	\$0	\$0	\$0
Enhance	\$0	\$0	\$0	\$0	\$0	\$0
Total	\$0	\$0	\$0	\$0	\$2,924,000	\$2,924,000

**Table 5. Target Lake/Stream/River Miles**

16 miles



## Parcel List

### Section 1 - Restore / Enhance Parcel List

St. Louis

<b>Name</b>	<b>TRDS</b>	<b>Acres</b>	<b>Est Cost</b>	<b>Existing Protection?</b>
Priority Property (Simian Lake Property)	05017229	271	\$150,000	No

### Section 2 - Protect Parcel List

St. Louis

<b>Name</b>	<b>TRDS</b>	<b>Acres</b>	<b>Est Cost</b>	<b>Existing Protection?</b>	<b>Hunting?</b>	<b>Fishing?</b>
Priority Property (Simian Lake Property)	05017229	440	\$1,750,000	No	Limited	Full
Riparian Properties	05017220	280	\$560,000	No	Limited	Full
St. Louis River Shoreline Property	05017217	236	\$448,000	No	Limited	Full

### Section 2a - Protect Parcel with Bldgs

No parcels with an activity type protect and has buildings.

### Section 3 - Other Parcel Activity

No parcels with an other activity type.

## Proposal of the Fond du Lac Band of Lake Superior Chippewa



Photograph 1: View of Simian Creek from the north shore of Chi-wizo zaaga'iganing (Simian Lake) looking to the north.

## Proposal of the Fond du Lac Band of Lake Superior Chippewa



Photograph 2: View from the north shore of Chi-wizo zaaga'iganing (Simian Lake) looking to the southeast.

## Proposal of the Fond du Lac Band of Lake Superior Chippewa



Photograph 3: View looking to the east at the northeast shoreline of Chi-wizo zaaga'iganing.

## Proposal of the Fond du Lac Band of Lake Superior Chippewa



Photograph 4: View of upland areas north of Chi-wizo zaaga'iganing (Simian Lake) looking to the northwest.

## Proposal of the Fond du Lac Band of Lake Superior Chippewa



Photograph 5: The property along the left bank of the St. Louis River would be acquired by the Fond du Lac Band.

## Proposal of the Fond du Lac Band of Lake Superior Chippewa



Photograph 6: The property along the right bank of the St. Louis River would be acquired by the Fond du Lac Band.



## Izaak Walton League of America W. J. McCabe Chapter

June 10, 2013

Lessard-Sams Outdoor Heritage Council  
100 Rev. Dr. Martin Luther King Jr. Blvd.  
State Office Building, Room 95  
St. Paul, MN 55155

Dear Lessard-Sams Outdoor Heritage Council,

The W. J. McCabe (Duluth) Chapter of the Izaak Walton League is a non-profit, local conservation group that is affiliated with the national Izaak Walton League of America, Inc. Our chapter has long been an advocate for and worked toward the improvement of the water quality, fish and wildlife habitat, and recreation values of Lake Superior and the St. Louis River.

I am writing in support of the Lessard-Sams Outdoor Heritage Council grant application submitted by the Fond du Lac Band of Lake Superior Chippewa for acquisition and protection of 956 acres of lands around Simian Lake and Simian Creek, and along the St. Louis River.

The Fond du Lac Band's project fits very well within our long-term goal of protecting and restoring the St. Louis River watershed. The St. Louis River is the second largest river system flowing into Lake Superior and supports the largest estuary on the lake. This watershed is also critical to the Fond du Lac Band out of which they obtain much of the fish, game and wild rice used by their members.

The project would result in the Band's purchase of 440 acres surrounding the 80-acre Simian Lake and the restoration of wetlands and wild rice habitat. The lake is currently privately owned, and not open to the public. The Band would make the lake open to the general public, including both tribal and non-tribal members, for fishing and hunting. A boat launch will be built on the northern end of the lake to facilitate fishing and the lake will be limited to non-motorized or electric motor boating.

The 440-acre property contains approximately 214 acres of forest, and acquisition by the Fond du Lac Band will prevent the fragmentation of these woods, which remains an ongoing threat to the northern forests of Minnesota. In addition, the project will protect approximately 280 additional acres following the course Simian Creek until its confluence with the St. Louis River, and another 236 acres along the main stem of the St. Louis River. This acquisition would help protect the water quality of the St. Louis River as well as preserving a significant area of forest, lake and wetland habitat, and providing substantial opportunity for outdoor recreation and subsistence harvesting.

The W.J. McCabe Chapter of the Izaak Walton League heartily endorses the Fond du Lac Band's grant application, and requests that the LSOHC approve funding for this outstanding project. The Fond du Lac Band has been a strong partner in the protection and proper management of the St. Louis River watershed and this project would support and continue that effort.



Sincerely,

A handwritten signature in black ink that reads "Rich Staffon". The signature is written in a cursive style with a prominent horizontal line across the top of the letters.

Rich Staffon, President  
W.J. McCabe Chapter  
Izaak Walton League of America

**W J. McCabe Chapter  
Izaak Walton League of America  
PO Box 3063 Duluth, MN 55803  
218-879-3186  
[www.duluthikes.org](http://www.duluthikes.org)**



June 7, 2013

Lessard-Sams Outdoor Heritage Council  
100 Rev. Dr. Martin Luther King Jr. Blvd.  
State Office Building, Room 95  
St. Paul, MN 55155

Re: Fond du Lac Band Grant Application to the Lessard-Sams Outdoor  
Heritage Council

To Members of the Lessard-Sams Outdoor Heritage Council:

I am writing in support of the Lessard-Sams Outdoor Heritage Council grant application submitted by the Fond du Lac Band of Lake Superior Chippewa. As one of the partners in the St. Louis River Restoration Initiative, the Fond du Lac Band's efforts to protect and restore vital aquatic habitats within the St. Louis River watershed are important to the health of the River and western Lake Superior. The Fond du Lac Band's goals for the Simian Creek project of preventing additional nutrient and sediment loading, protecting the forests, wetlands and riparian habitat and providing public access to the protected lands are both consistent with numerous state and regional conservation plans and beneficial to the long term health of the St. Louis River.

On behalf of the Land Trust, I want to thank you for your consideration of this project.

Best regards,

A handwritten signature in black ink, appearing to read "Kris Larson", with a long horizontal flourish extending to the right.

Kris Larson  
Executive Director

United States Department of Agriculture



Natural Resources Conservation Service  
4850 Miller Trunk Hwy. Suite 2B  
Duluth, MN 58101-1520

Telephone (218) 720 - 5209

Fax (218) 720 - 3129

---

May 31, 2013

Lessard-Sams Outdoor Heritage Council  
100 Rev. Dr. Martin Luther King Jr. Blvd.  
State Office Building, Room 95  
St. Paul, MN 55155

Re: Grant Application of the Fond du Lac Band to the Lessard-Sams Outdoor Heritage Council

To Members of the Council:

I am writing in support of the Lessard-Sams Outdoor Heritage Council (LSOHC) grant application submitted by the Fond du Lac Band of Lake Superior Chippewa. The project put forth by the Fond du Lac Band will protect and restore habitat in the St. Louis River watershed and support the extensive restoration work ongoing in the St. Louis River.

The Natural Resources Conservation Service (NRCS) and the Fond du Lac Band have worked cooperatively together over the past several years on the Fond du Lac Water Management Project to conduct a hydrological assessment of Stoney Brook watershed, which is a sub-watershed of the St. Louis River. In our work together, we examined ways to optimize water levels for wild rice production in five wild rice lakes and how to reverse the damage from early ditching done in the area nearly a century ago. Based on the effectiveness of our working relationship, I am confident in the technical skill and expertise of the Fond du Lac Band to implement the project before the LSOHC.

The Fond du Lac Band's project to purchase the 440-acre Simian Lake Property and over 500 additional acres along the St. Louis River and Simian Creek will be a valuable addition to their conservation work in the St. Louis River watershed. I request the Council to support the Band's grant application.

Sincerely,

A handwritten signature in black ink that reads "Daniel Weber". The signature is written in a cursive, flowing style.

Daniel Weber  
District Conservationist  
USDA – Natural Resources Conservation Services

*Helping People Help the Land*

An Equal Opportunity Provider and Employer





**St. Louis River Alliance**  
394 Lake Avenue South, Suite 321  
Duluth, Minnesota 55802-2338  
Phone: 218-733-9520  
Fax: 218-723-4794  
E-mail: slrcac@StLouisRiver.org  
Web: StLouisRiver.org

May 29, 2013

Lessard-Sams Outdoor Heritage Council  
100 Rev. Dr. Martin Luther King Jr. Blvd.  
State Office Building, Room 95  
St. Paul, MN 55155

Re: Grant Application of the Fond du Lac Band

Members of the Council:

I am writing to express the strong support of the St. Louis River Alliance for the grant application to the Lessard-Sams Outdoor Heritage Council by the Fond du Lac Band of Lake Superior Chippewa.

The St. Louis River Alliance is a nonprofit organization that serves as the official citizens advisory committee for the St. Louis River Area of Concern. The Alliance works closely with local, state and federal agencies along with other area non-governmental agencies in a wide variety of efforts and activities intended to restore, protect and delist the St. Louis River as an area of concern.

The Fond du Lac Band has been a valuable partner for the St. Louis River Alliance in promoting the restoration of St. Louis River. A Resource Management Division staff member of the Fond du Lac Band sits on our Board of Directors. The Fond du Lac Band's expertise in water quality, land management, and wetland and wild rice habitat is widely recognized throughout the St. Louis River watershed.

The Remedial Action Plan (RAP) for the St. Louis River Area of Concern notes that over 90 percent of the nutrient loading in the St. Louis River is from nonpoint sources, such as runoff from land in the watershed. By protecting over 950 acres of forest, lake, wetlands, and stream habitat, including 238 along the St Louis River, the Fond du Lac Band's project will prevent additional nutrient loading into the St. Louis River and directly advance the objectives of the RAP. Please feel free to contact me, if you have any questions regarding this letter of support.

Sincerely,

Julene Boe  
Executive Director

*Working together to restore, protect and enhance the St. Louis River,  
its watershed and western Lake Superior.*

# UNIVERSITY OF MINNESOTA

---

*Twin Cities Campus*

*College of Food, Agricultural and Natural  
Resource Sciences*

*Cloquet Forestry Center*

*175 University Rd.  
Cloquet, MN 55720*

*Office: 218-726-6400*

*Fax: 218-726-6488*

*<http://cfc.cfans.umn.edu>*

*Email: [cfc@umn.edu](mailto:cfc@umn.edu)*

May 31, 2013

Lessard-Sams Outdoor Heritage Council  
100 Rev. Dr. Martin Luther King Jr. Blvd.  
State Office Building, Room 95  
St. Paul, MN 55155

Re: Grant Application of the Fond du Lac Band

To the Members of the Lessard-Sams Outdoor Heritage Council:

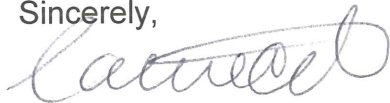
I am writing in support of the Lessard-Sams Outdoor Heritage Council grant application submitted by the Fond du Lac Band of Lake Superior Chippewa.

I serve as the Director of Operations at the University of Minnesota's Cloquet Forestry Center, which is located within the boundaries of the Fond du Lac Reservation. With over 3,500 acres, the Center is the University's primary research and education forest. The Center has operated for over 100 years and is the longest continuously operating forestry field station in the United States.

One of the greatest challenges to the forests of northern Minnesota is fragmentation. The Fond du Lac Band's project before the Lessard-Sams Outdoor Heritage Council, which, if funded, would result in the Band's purchase of 440 acres surrounding Simian Lake, including 214 acres of forest, will help prevent further forest fragmentation. As the economy improves, there will be increasing pressure on these larger properties to be sold and subdivided. This fragmentation typically reduces the quality of wildlife habitat and makes it increasingly difficult to manage the forest sustainably.

I strongly endorse the Fond du Lac Band's grant application and request that approve funding for this outstanding project.

Sincerely,



Carrie Pike

Interim Director of Operations



## United States Department of the Interior

### FISH AND WILDLIFE SERVICE

Twin Cities Field Office  
4101 American Blvd E.  
Bloomington, Minnesota 55425-1665

June 12, 2013

Chairwoman Karen Diver  
Fond du Lac Band of Lake Superior Chippewa  
1720 Big Lake Road  
Cloquet, MN 55720

Dear Chairwoman Diver:

I am writing to express my strong support for the Fond du Lac Band's efforts to protect and restore lake and stream habitat in the St. Louis River watershed. The U.S. Fish and Wildlife Service (FWS) and the Band have worked in partnership for many years, and on many projects involving lake sturgeon restoration, wild rice restoration, and moose population dynamics research. The Fond du Lac Band is also a key collaborator with the FWS in the St. Louis River estuary on various conservation initiatives.

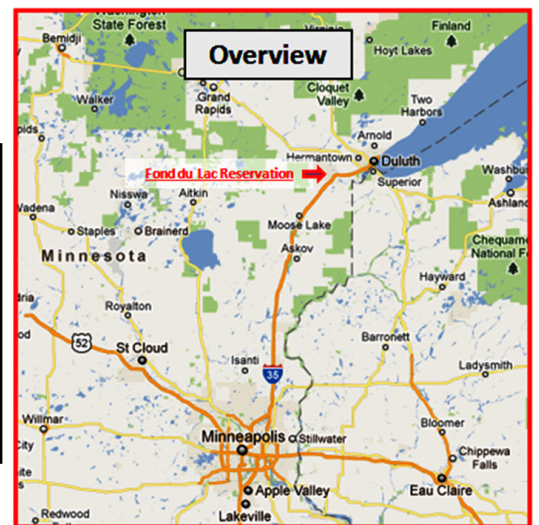
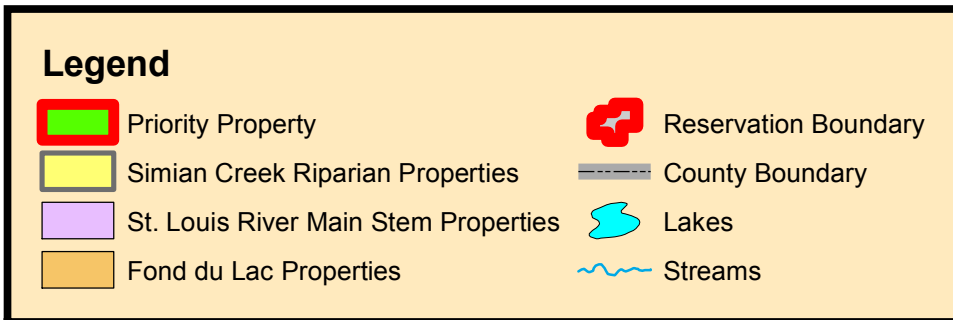
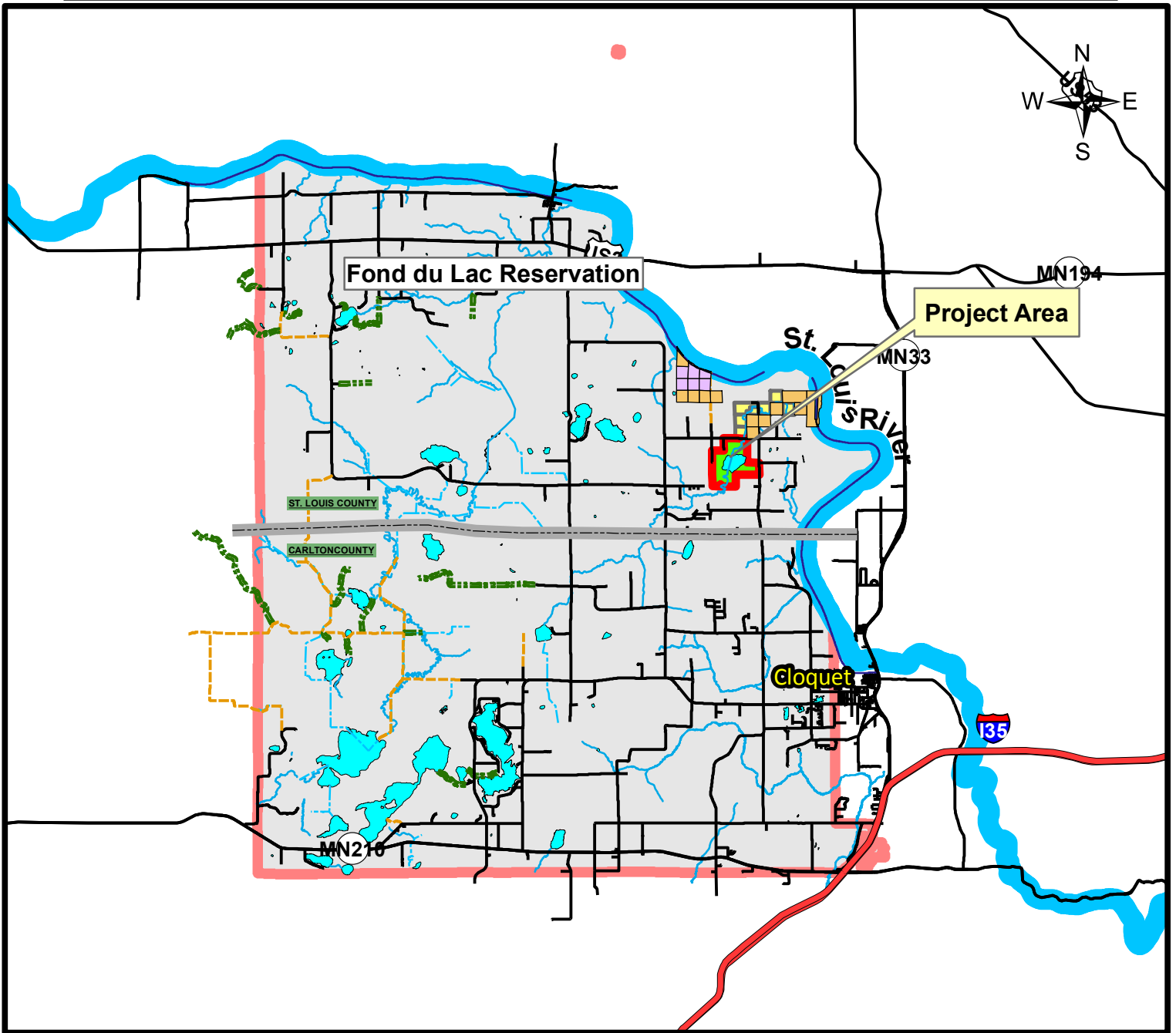
The Fond du Lac Band's proposal to prevent development on lakeshore properties (Simian Lake), and to protect the Simian Creek corridor and main stem St. Louis River properties, will prevent additional nutrient and sediment loading into the St. Louis River. Consolidation of lands into conservation ownership should enhance fishery and wildlife habitat for generations to come, and would further support the numerous intergovernmental efforts to conserve and restore the St. Louis River.

We are delighted to support this project, and look forward to a continued strong conservation partnership with the Fond du Lac Band.

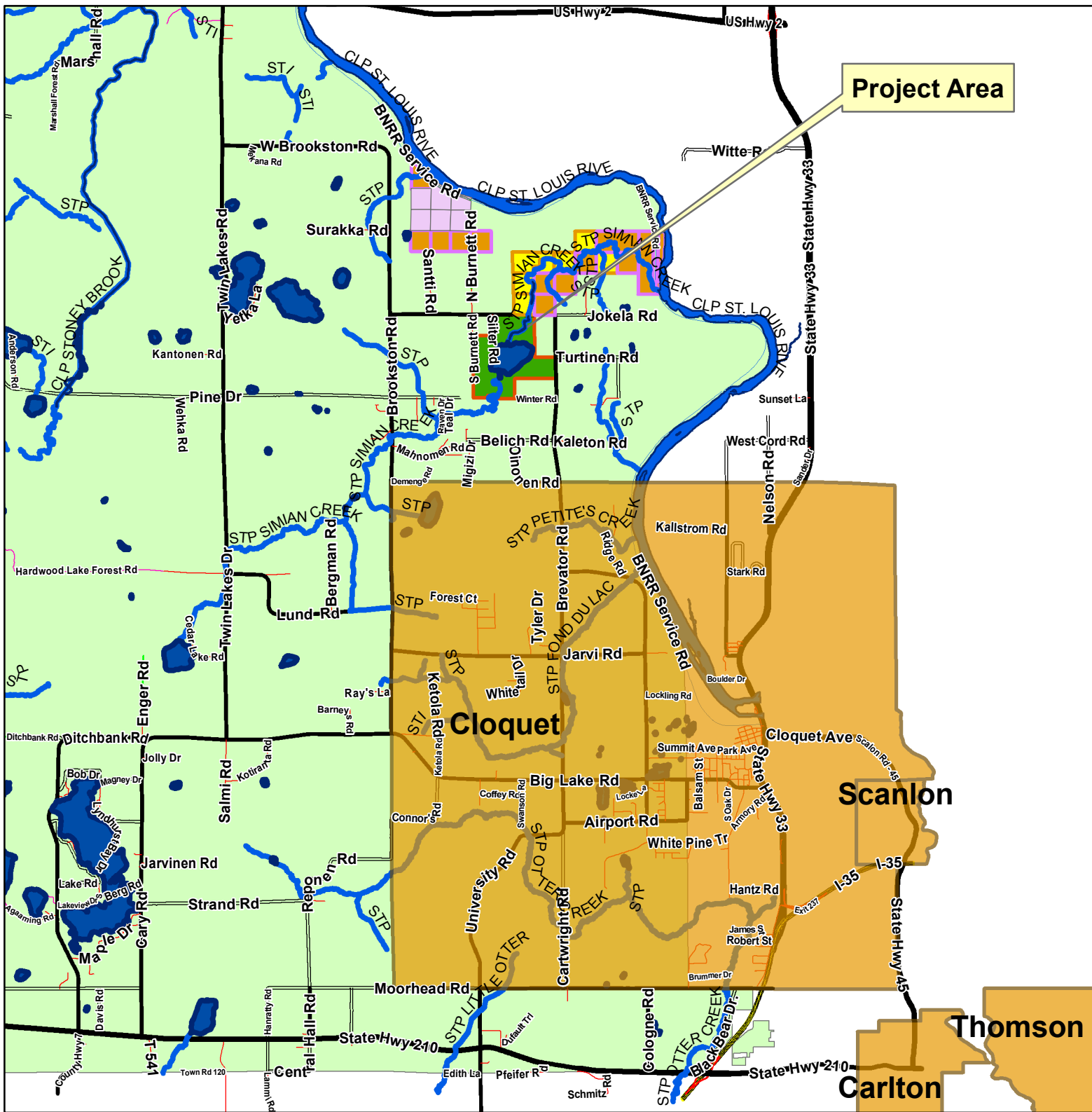
Sincerely,

Tony Sullins  
Field Supervisor

# Project Location



# Project Region

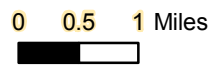


**Project Area**

## Legend

- Fond du Lac Reservation
- Cities
- Fond du Lac Properties
- St. Louis River Main Stem Properties
- Simian Creek Riparian Properties
- Priority Property

UTM NAD 83 Zone 15  
 FDL Resource Management  
 FDL Forestry  
 218 878 7146



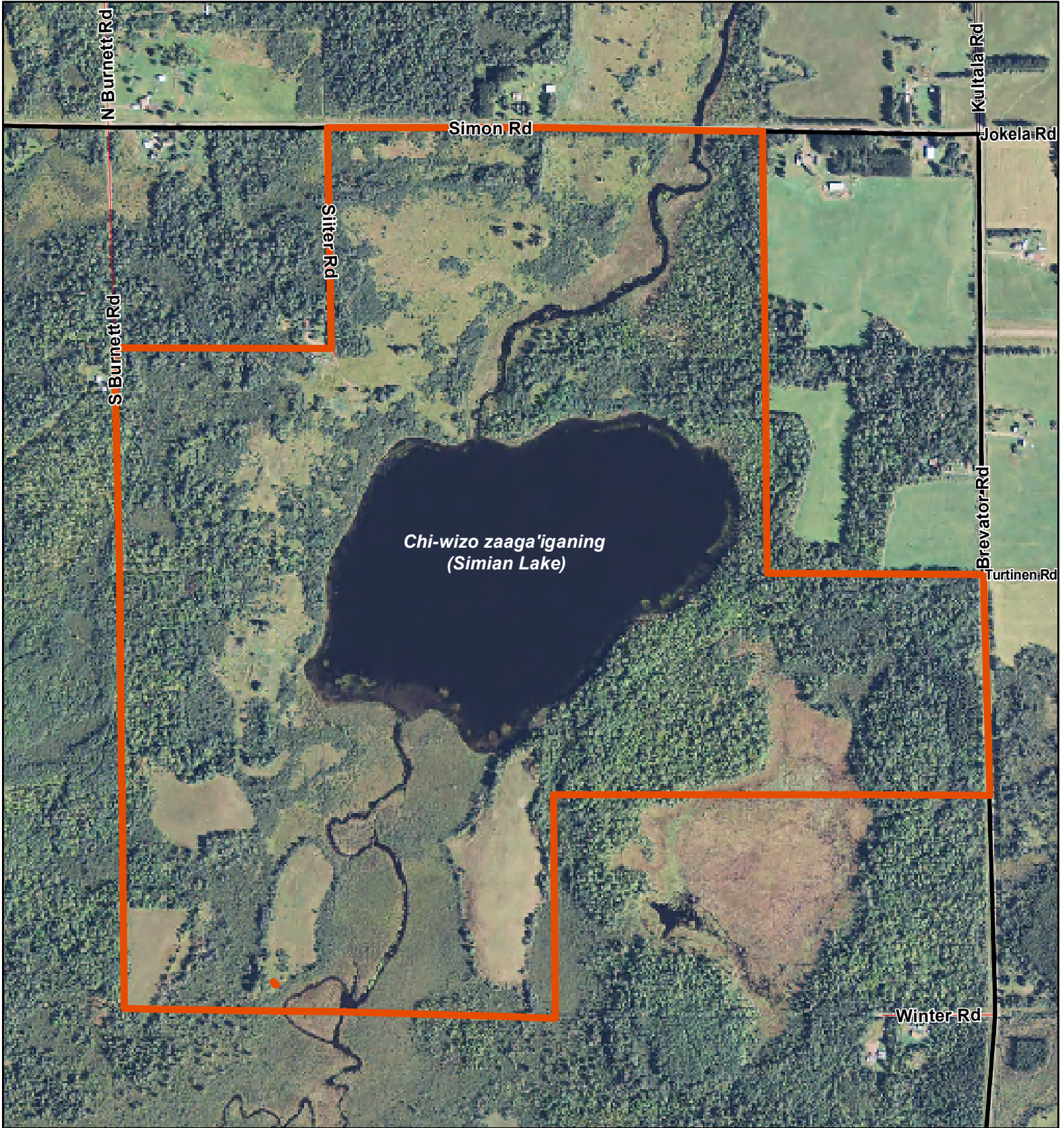
Disclaimer:  
 FDL makes no representations about the suitability of this map for any purpose. The map is provided 'as is' without express or implied warranties, including warranties of merchantability and fitness for a particular purpose or no infringement.

**1:101,368**





# Priority Property Aerial



0 0.125 0.25 Miles

UTM NAD 83 Zone 15  
FDL Resource Management  
FDL Forestry  
218 878 7146

1:9,366



## Legend

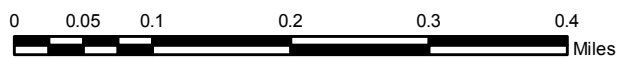
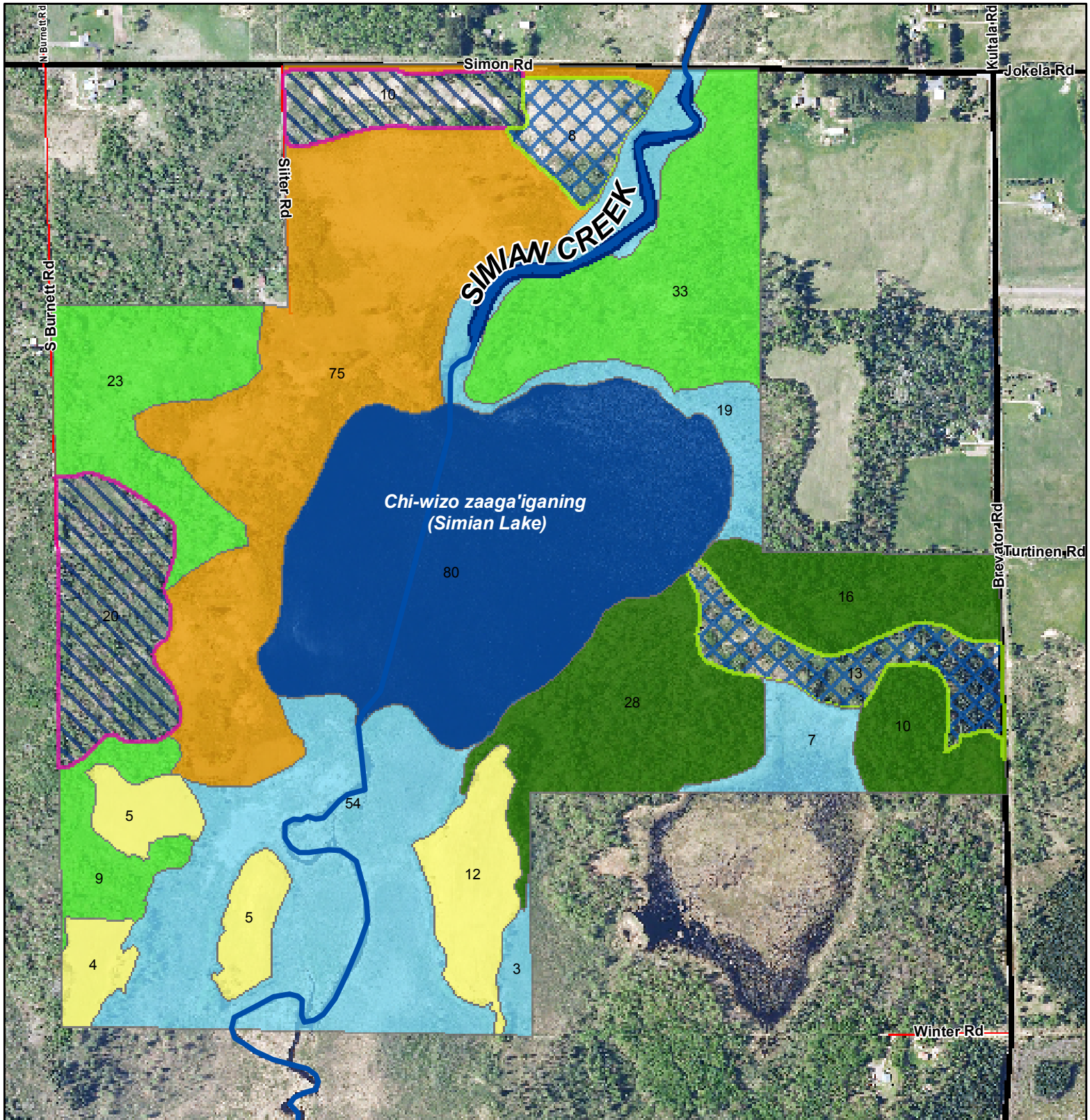
 Property Boundary

Disclaimer:  
FDL makes no representations about the suitability of this map for any purpose. The map is provided 'as is' without express or implied warranties, including warranties of merchantability and fitness for a particular purpose or no infringement.



Map created June 27, 2012  
By: Scott Grover

# Priority Property Restoration and Enhancement Plan



## Legend

Forest		Wetlands	
	Aspen 54 acres		Restoration 21 acres
	Brushland 65 acres		Enhancement 30 acres
	Prairie 26 acres		Other Wetlands 83 acres
	Savanna 75 acres		Lake 80 acres

UTM NAD 83 Zone 15  
 FDL Resource Management  
 FDL Forestry  
 218 878 7146 **1:8,803**



Disclaimer:  
 FDL makes no representations about the suitability of this map for any purpose. The map is provided  
 'as is' without express or implied warranties, including warranties of merchantability and fitness for a particular  
 purpose or no infringement.