

**Main Request for Funding Form**

**Lessard-Sams Outdoor Heritage Council  
Fiscal Year 2012**

**Program or Project Title: Shallow Lake Shoreland Protection: Wild Rice Lakes**

Funds Requested (\$000s)	Funding Request	OHF Out-Year Projections of Needs		
	FY 2012	FY 2013	FY 2014	FY 2015
Outdoor Heritage Fund	<b>\$3,000,000</b>	0	7,000,000	0

**Manager's Name:** Jon Schneider  
**Organization:** Ducks Unlimited  
**Street Address:** 311 East Lake Geneva Road  
**City:** Alexandria **State:** Minnesota **Zip:** 56182  
**Telephone:** 320.762.9916  
**E-Mail:** jschneider@ducks.org  
**Organization Web Site:** www.ducks.org

**Co-Manager's Name:** Kevin Lines  
**Organization:** Board of Water & Soil Resources  
**Street Address:** 520 Lafayette Road North  
**City:** Saint Paul **State:** Minnesota **Zip:** 55155  
**Telephone:** 651.296.3767  
**E-Mail:** kevin.lines@state.mn.us  
**Organization Web Site:** www.bwsr.state.mn.us

**County Location:** Aitkin, Carlton, Cass, Crow Wing, Hubbard, Itasca, St. Louis, & Wadena.

**Ecological Planning Regions:**

- Northern Forest       Forest/Prairie Transition       Southeast Forest  
 Prairie       Metro/Urban

**Activity Type:**

- Protect       Restore       Enhance

**Priority Resources addressed by activity:**

- Wetlands       Forests       Prairie       Habitat

## Project Abstract

This project will protect 1,000 acres of wild rice lake shoreland habitat through permanent conservation easements and fee-title acquisition, the Council's top Priority Action identified for the Northern Forest Section.

---

## Project Narrative

Shallow lakes and shallow bays of deeper lakes provide some of the most important habitat for wetland-dependent wildlife species in Minnesota. In the Prairie, Forest//Prairie, and Metro Urbanizing Sections of Minnesota, shallow lakes are some of the only wetlands that remain due to massive landscape drainage projects of the past. In the Forest Section where more wetlands remain and water quality is generally good, these shallow lakes and bays often support wild rice and thus provide some of the most attractive migration and breeding habitat for waterfowl and other migratory birds left in the state. However, despite their prominence and importance, voluntary, incentive-based shallow protection programs and voluntary conservation options for shallow lake landowners are few, and thus this proposal is designed to fill an unmet need for shoreline protection on key shallow lakes such as those with wild rice in the Northern Forest Section. Future proposals will expand to protect shallow lakes in other Sections.

Wild rice is a critical wetland wildlife habitat component of shallow lakes and bays in the northern forest because its emergent vegetative structure and nutritional seed value supports numerous wildlife species. Wild rice habitat is especially important to waterfowl migrating through Minnesota such as mallard, ring-necked and lesser scaup ducks, and to breeding waterfowl including trumpeter swans, Canada geese, and ring-necked, mallard and wood ducks. Thus, wild rice also provides hunting opportunities.

Minnesota supports more wild rice habitat than any other state in the U.S. Originally found in wetlands and lakes throughout the state, wild rice is spiritually important to Native Americans and is a part of Minnesota's rich natural and cultural heritage. Wild rice is an important food source and supports a small but active industry comprised of citizens that hand harvest, process and sell wild rice. Wild rice creates recreational opportunities for 2,000 – 5,000 state and/or tribal licensed citizens annually that participate in wild rice harvesting, depending on wild rice abundance in a given year.

Historically, wild rice occurred throughout Minnesota and even extended into northern Iowa. Wild rice has since been extirpated from most of its southern range due to changes to water quality and chemistry, sedimentation, landscape drainage, and other factors, but wild rice remains a common species of the wetland plant community in shallow lakes, bays, and flowages of the northern forest and transition zone. Wild rice currently exists in 55 counties in the northern and eastern portions of Minnesota in an

estimated 1,300 lakes and flowages. The heart of the wild rice range here falls within Aitkin (4,859 acres), Cass (8,323 acres), Crow Wing (3,751 acres), Itasca (8,448 acres) and St. Louis (8,939 acres) counties. These counties also account for the 70% of harvesting trips for state licensed harvesters. Carlton, Hubbard, and Wadena also provide important wild rice habitat for wildlife and for both harvesters and hunters.

Despite its abundance in the Northern Forest Section, wild rice habitat is threatened (as is shallow lake habitat throughout the state) by shoreland development pressures that are increasing on shallow lakes as shorelines on deeper lakes become more completely developed. Shoreland development pressure leads to shoreline alterations and negative impacts to sensitive wetland vegetation in shallow lakes, which degrades the habitat quality these lakes provide for wildlife.

Recent well documented population and development trends pose a serious threat to wild rice habitat in the Northern Forest Section. For example, the rate of population growth in the greater Brainerd area was over twice the statewide average between 1990 and 2000 and in 2005, Brainerd was the fourth fastest growing micropolitan in the Midwest. Shoreline development has dramatically increased, with small cabins with limited landscaping (the norm since 1950) being replaced by large, permanent homes with expanded landscaping and shoreline alteration. This population and development boom has reduced the availability of developable shoreline on recreational lakes, with the result being shallow lakes and shallow bays containing wild rice are being increasingly targeted for shoreline development.

As on the prairie, shallow lakes in the forest are very susceptible to the impacts of shoreline development. The alteration of shoreline vegetation, the construction of impervious surfaces and placement of in-lake structures, and increased boat and water based recreation can result in a reduction in emergent and floating plant abundance; mixing of bottom sediments, increased nutrient loading (including substantial changes in phosphorous); and shoreline erosion. Further, expectations of new shoreline home owners may conflict with wildlife management strategies designed to maximize wild rice production and improve waterfowl habitat. The impact of development is cumulative, and over time, such changes can severely reduce wild rice production, water quality and waterfowl use of these important shallow lakes.

Many wild rice lakes are partially protected via adjacent county, state, federal and/or tribal lands, and in a few cases, wild rice lakes are fully protected via public or tribal ownership. Beyond public ownership, current shoreline protection on wild rice lakes is limited to county shoreland ordinances and zoning, and limited conservation efforts by non-governmental organizations. Variances are routinely allowed to land use rules aimed at preserving the state's most valuable resource, our lakes. Further, even the most stringent shoreland ordinances still allow for some subdivision and development,

which is generally not appropriate for shallow wild rice lakes because development leads to increased shoreline alteration and surface uses that can degrade fragile wild rice lake habitat and disturb wetland wildlife. Unlike the prairie portion of the state where some agency-backed easement options exist for conservation-minded landowners, private land protection options are limited for wild rice lakes in the forest due to funding constraints and the fact that many easement programs are targeted to restoration. In the northern forest, there is much less need for restoration, so this proposal is focused on habitat protection.

### **Design and scope of work**

This project will initiate a new statewide initiative to address the growing problem of shoreline development by providing private shallow lake shoreline landowners with expanded protection options through existing permanent shoreland conservation easement programs and, where needed, fee-title acquisition. Emphasis will be placed on securing permanent conservation easements over fee-title acquisition, which will keep land in private ownership and on local and county tax rolls. During this initial phase of the project, we will focus on wild rice lakes by acquiring permanent easements or fee-title on 1,000 acres along shallow lakes in the Northern Forest Section to insure the long-term sustainability of our unique wild rice habitat resource. Future proposals will expand the scope of our work to protect shallow lakes in other Sections too.

To accomplish that outcome, Ducks Unlimited and the Minnesota Board of Water & Soil Resources (BWSR) propose to expand voluntary easement programs to offer permanent shoreland conservation easements on shallow lakes through both the BWSR's Reinvest In Minnesota (RIM) program (500 acres) and Ducks Unlimited's conservation easement program (300 acres). Ducks Unlimited will also secure fee-title acquisitions on a more limited basis (200 acres) when key tracts are for sale, when landowners desire to sell the fee over an easement, and for in-holdings in public land.

In this initial two-year pilot program, we propose to protect 1,000 shoreland acres of upland forest and wetland habitat adjacent to wild rice lakes in an eight county area of north-central Minnesota. Because Ducks Unlimited does not have a field biologist in the Northern Forest Section promoting DU easements and because the BWSR does not currently have funding for a RIM shoreland easement program, a list of specific easement tract parcels is not currently available. Nonetheless, the MNDNR and SWCDs have estimated that at least 1,000 unprotected acres on 182 wild priority rice lakes in eight north-central counties are in immediate need of protection to prevent development, and have developed a list of those more suitable for fee-title acquisition. Lists of proposed BWSR RIM easement tracts will be submitted to the Lessard-Sams Outdoor Heritage Council later once developed for approval prior to acquisition.

Ducks Unlimited will hire a wild rice lakes biologist to work closely with the BWSR, Minnesota Department of Natural Resources (MNDNR), county Soil and Water

Conservation Districts (SWCD), federal agencies, tribal interests, and other local units of government to identify specific privately held shoreline tracts on 182 important wild rice lakes in the heart of Minnesota's wild rice range. These 182 important wild rice lakes have recently been identified by local, county, state, federal, tribal, and private partners participating in the MNDNR's "Wild Rice Working Group" as being some of the most "important wild rice lakes" that support approximately 57,000 acres of wild rice habitat in the eight counties of north-central Minnesota. Other wild rice and shallow prairie shallow lakes the Transition, Prairie, and Metro Sections are also in dire need of shoreland protection, and lakes in those Sections will be addressed in future phases of this project via new proposals once this initial phase has been implemented.

The Ducks Unlimited biologist will work closely with these partners to coordinate the development and promotion of new easement options to private landowners, and to negotiate the purchase of permanent conservation easements or fee-title acquisition from willing sellers to protect 1,000 acres from future subdivision, development, and shoreline alteration. Tracts to be offered conservation easements will be selected based on the degree they help permanently protect all the land around a given wild rice lake (tracts on lakes with much shoreline in permanent protection will be prioritized over tracts on lakes with extensive development and/or many unprotected tracts), threat of development, and other variables identified by the "Wild Rice Working Group".

Through SWCD offices in the eight county area and with the help of the Ducks Unlimited biologist and other partners, the BWSR will offer to purchase RIM shoreland easements from wild rice lake shoreline landowners using RIM rates set by the BWSR to protect approximately 500 acres. Ducks Unlimited will also work with shoreline owners to secure permanent conservation easements on approximately 300 acres in cases where a RIM easement is not a satisfactory option for a landowner (e.g., in cases where a landowner prefers a non-governmental organization land trust hold the easement). Finally, in cases where land is for sale and conservation easements are not an option to protect shoreland or where a tract is a public land in-holding or is adjacent to extensive public land and a desirable addition to public land holdings, DU will secure approximately 200 acres via fee-title acquisition from willing sellers with transfer to the MNDNR or other agency (with County approval). Lists of proposed BWSR RIM easement tracts will be submitted to the Lessard-Sams Outdoor Heritage Council for approval prior to acquisition. Ducks Unlimited easements funded through this project will only be purchased on land along the 182 wild rice lakes listed in the parcel list.

Conservation easements acquired by Ducks Unlimited will be permanently held by Ducks Unlimited's Wetlands America Trust (WAT) and annually monitored by Ducks Unlimited professional land staff with stewardship endowment provided through this proposal. RIM easements will be secured and permanently monitored and enforced by the BWSR and county SWCD professional field staff through funding from the

legislature for RIM easement monitoring. RIM easements will feature either a conservation plan or a forest stewardship plan that will be monitored annually in person during the first five years and periodically in person or by aerial photo reconnaissance thereafter. More limited acres of land acquired in fee-title by Ducks Unlimited will be transferred to the MNDNR or other state or federal agency for permanent ownership and management.

Shoreland protection for wild rice lakes enjoys widespread support from tribal interests, SWCDs, Minnesota Forestry Association, sportsmen clubs, and other wild rice stakeholders in north-central Minnesota. Independent letters of support will be submitted separately to the Council.

## Planning

This project will permanently protect 1,000 acres of upland forest habitat on wild rice lakes through permanent conservation easements and fee-title acquisition, which is the Lessard-Sams Outdoor Heritage Council's top Priority Action identified for the Northern Forest Section of Minnesota ("Protect shoreland and restore or enhance critical habitat on wild rice lakes, shallow lakes,..."). Further, shoreland protection via both fee-title purchase and permanent conservation easements comprise the top two Habitat Recommendations listed in the "Minnesota Conservation and Preservation Plan" (Priority 1 = "Protect Priority Land Habitats" and Priority 2 = "Protect Critical Shorelands of Streams and Lakes"). Finally, according to the DNR's Wild Rice Report to the legislature, more than 17 wildlife species in the state "Comprehensive Wildlife Conservation Strategy – Tomorrow's Habitat for the Wild & Rare" are listed as "species of greatest conservation need" use wild rice lakes as habitat for breeding or foraging.

Initial program efforts will target 182 shallow lakes identified by the MNDNR's "Wild Rice Working Group" and specific tracts selected for conservation easements will be identified based on the degree to which they help add to the base of land in permanent protection around a given wild rice lake (tracts on lakes with much shoreline in permanent protection will be prioritized over tracts on lakes with extensive development and/or many unprotected tracts that will take more time to completely protect), threat of development, and other variables identified by the "Wild Rice Working Group". A list of tracts selected for BWSR RIM easements will be presented to the Council for approval prior to purchase, and Ducks Unlimited conservation easements will only be purchased on these lakes.

Through this initial effort, the Ducks Unlimited biologist and Group partners will also develop a list of privately owned tracts on these 182 important wild rice lakes and start to determine landowner interest in future easements or fee-title acquisition to guide future funding requests to further protect wild rice lakes in the Northern Forest Section. The long-term program goal is to continue working with private wild rice landowners in the future to protect privately owned, undeveloped tracts on these key wild rice lakes while also expanding these shoreland protection programs to other shallow lakes around the state in the Transition, Prairie, and Metro Sections.



## **Relationship to Other Constitutional Funds**

This request compliments state bonding and Environment & Natural Resources Trust Fund support for RIM easements that are combined with Wetlands Reserve Program (WRP) easements in the Prairie and Prairie-Forest Sections by funding a shoreland RIM easement program for the Northern Forest Section. It also expands and accelerates Trust Fund support for Ducks Unlimited and Minnesota Land Trust conservation easements that do not generally target wild rice lakes.

## **Relationship to Current Organizational Budget**

This request does not substitute for any traditional funding sources to Ducks Unlimited or the BWSR. Ducks Unlimited has no traditional funding source for purchase of land or conservation easements other than state or federal grants such as this request. The BWSR does not currently offer or have traditional funding for RIM shoreland easements, and currently prioritizes RIM funding to leverage WRP funding for RIM-WRP restoration easements that generally do not apply to the protection of wild rice lake shoreland in the Northern Forest Section.

## **Sustainability and Maintenance**

Conservation easements acquired by Ducks Unlimited will be permanently held by Ducks Unlimited's Wetlands America Trust (WAT) and annually monitored by Ducks Unlimited professional land staff with stewardship endowment provided through this proposal. Ducks Unlimited calculates the funding required to endow long-term stewardship for each easement it holds based on the location, size, complexity, and other factors related to staff costs to annually monitor and enforce easement terms. RIM easements will be secured and permanently monitored and enforced by the BWSR and county SWCDs professional field staff, and will become the responsibility of the state. Land acquired in fee-title by Ducks Unlimited will be transferred to the MNDNR or other state or federal agency for permanent ownership and management. However, the tracts to be protected through this grant are generally forested, and protection clauses will be focused largely on maintaining existing forest stands and preventing shoreline alterations (especially subdivision and development), and will therefore be relatively straightforward to monitor and manage.



## Types of Projects

### Fee Acquisition Projects

Will local government approval be sought prior to acquisition?

Yes                       No, please explain                       not applicable

If no, please explain here:

Is the land you plan to acquire free of any other permanent protection?

Yes                       No, please explain                       not applicable

If no, please explain here:

### Easement Acquisition Projects

Will the eased land be open for public use?

Yes                       No, please explain                       not applicable

If no, please explain here:

Conservation easements will be secured on private land by the Board of Water & Soil Resources (RIM easements) and by Ducks Unlimited. These easements will be designed to protect existing privately-owned shoreland habitat on shallow wild rice lakes and prevent those lands from being subdivided and developed that would jeopardize wildlife habitat, but are not designed to secure public access and thus private landowners retain the right of trespass. Private landowners simply will not sell conservation easements that include public access rights, otherwise they may as well sell the fee-title to the land outright. Nonetheless, private landowners may provide access to citizens if asked. All 182 wild rice lakes proposed for protection are public waters of Minnesota, and most lakes are publicly accessible. This project is designed to protect habitat on land acquired via easement or fee-title that borders fragile wild rice habitat in the shallow lakes they adjoin, and is consistent with constitutional amendment language that requires funding for efforts that protect, restore, and enhance habitat.

Will the conservation easement be permanent?

Yes                       No, please explain                       not applicable

If no, please explain here:

### Restoration and Enhancement Projects

Is the activity on permanently protected land and/or public waters?

Yes                       No, please explain                       not applicable

If no, please explain here:

Does the activity take place on an Aquatic Management Area (AMA), Scientific and Natural Area (SNA), Wildlife Management Area (WMA), or State Forests?

Yes, which ones                       No, please explain                       not applicable

If so, please indicate which ones:

### **Accomplishment Timeline**

<b>Activity</b>	<b>Milestone</b>	<b>Date</b>
RIM Shoreland Easements	Secure RIM easements on 500 acres	June 30, 2013
DU Conservation Easements	Secure DU easements on 300 acres	June 30, 2013
DU Fee-Title Land Acquisition	Purchase 200 acres in fee-title	June 30, 2014

### **Attachments:**

- A. Budget**
- B. Proposed Outcome Tables 1-5**
- C. Map**
- D. Parcel List**

**Attachment A. Budget Spreadsheet**

[Link Here to definitions of the budget items below.](#)

**Total Amount of Request**      \$ 3,000,000 *From page 1 on the funding form.*

**Personnel**

Position breakdown here	FTE	Over # of years	LSOHC Request	Anticipated Cash Leverage	Cash Leverage Source	Total
<i>DU Manager of Programs</i>	0.2	2	\$ 40,000	\$ 20,000	<i>DU in-kind</i>	\$ 60,000
<i>DU Field Biologist (new)</i>	1	2	\$ 120,000			\$ 120,000
<i>DU Land Protection Biologis</i>	0.4	2	\$ 60,000	\$ 40,000	<i>DU in-kind</i>	\$ 100,000
<i>BWSR SWCD Field Support</i>	1	2	\$ 100,000			\$ 100,000
						\$ -
						\$ -
						\$ -
<b>Total</b>	<b>2.6</b>		<b>\$ 320,000</b>	<b>\$ 60,000</b>	<b>\$ -</b>	<b>\$ 380,000</b>

**Budget and Cash Leverage** *(All your LSOHC Request Funds must be direct to and necessary for program outcomes.)*

*Please describe how you intend to spend the requested funds.*

Budget Item	LSOHC Request	Anticipated Cash Leverage	Cash Leverage Source	Total
<b>Personnel - auto entered from above</b>	\$ 320,000	\$ 60,000	\$ -	\$ 380,000
<b>Contracts</b>				\$ -
<b>Fee Acquisition w/ PILT (breakout in table 6 &amp; 7)</b>	\$ 640,000			\$ 640,000
<b>Fee Acquisition w/o PILT (breakout in table 6 &amp; 7)</b>				\$ -
<b>Easement Acquisition</b>	\$ 1,660,000			\$ 1,660,000
<b>Easement Stewardship</b>	\$ 100,000			\$ 100,000
<b>Travel (in-state)</b>	\$ 15,000			\$ 15,000
<b>Professional Services</b>	\$ 230,000			\$ 230,000
<b>DNR Land Acquisition Costs</b>	\$ 30,000			\$ 30,000
<b>Other</b>				\$ 5,000
Capital Equipment				\$ -
Other Equipment/Tools	\$ 5,000			\$ 5,000
Supplies/Materials				\$ -
	<b>\$ 3,000,000</b>	<b>\$ 60,000</b>	<b>\$ -</b>	<b>\$ 3,060,000</b>

## Attachment B. Proposed Outcome Tables

Only enter data in the outlined cells

*Table 1 and Table 3 column totals should be the same AND Table 2 and Table 4 column totals should be the same*

*If your project has lakes or shoreline miles instead of land acres, convert miles to acres for Tables 1 and 3 using the following conversion:*

*Lakeshore = 6 acres per lakeshore mile / Stream & River Shore = 12 acres per linear mile, if both sides*

### Table 1. Acres by Resource Type

Describe the scope of the project in acres (use conversion above if needed)

	Wetlands	Prairies	Forest	Habitats	Total
Restore					0
Protect	100		900		1000
Enhance					0
<b>Total</b>	100	0	900	0	

Total Acres (sum of Total column)

1000

Total Acres (sum of Total row)

1000

*These two cells should be the same figure.*

### Table 2. Total Requested Funding by Resource Type

	Wetlands	Prairies	Forest	Habitats	Total
Restore					\$ -
Protect	\$ 300,000		\$ 2,700,000		\$ 3,000,000
Enhance					\$ -
<b>Total</b>	\$ 300,000	\$ -	\$ 2,700,000	\$ -	

Total Dollars (sum of Total column)

\$ 3,000,000

Total Dollars (sum of Total row)

\$ 3,000,000

*These two cells should be the same figure.*

Check to make sure this amount is the same

as the Funding Request Amount on page 1 of Main Funding Form.

### Table 3. Acres within each Ecological Section

	Metro/Urban	Forest/Prairie	SE Forest	Prairie	Northern Forest	Total
Restore						0
Protect					1000	1000
Enhance						0
<b>Total</b>	0	0	0	0	0	1000

Total Acres (sum of Total column)

1000

Total Acres (sum of Total row)

1000

Total Acres from Table 1.

1000

*These three cells should be the same figure.*

## Attachment B. Proposed Outcome Tables

**Table 4. Total Requested Funding within each Ecological Section**

	Metro/Urban	Forest/Prairie	SE Forest	Prairie	Northern Forest	Total
Restore						\$ -
Protect					\$ 3,000,000	\$ 3,000,000
Enhance						\$ -
<b>Total</b>	\$ -	\$ -	\$ -	\$ -	\$ 3,000,000	

Total Dollars (sum of Total column)

\$ 3,000,000

*These two cells should be the same figure.*

Total Dollars (sum of Total row)

\$ 3,000,000

Check to make sure these amounts are the same

as the Funding Request Amount on page 1 of Main Funding Form.

**Table 5. Target Lake/Stream/River Miles**

# miles of Lakes / Streams / Rivers Shoreline

**Table 6. Acquisition by PILT Status (enter information in acres)**

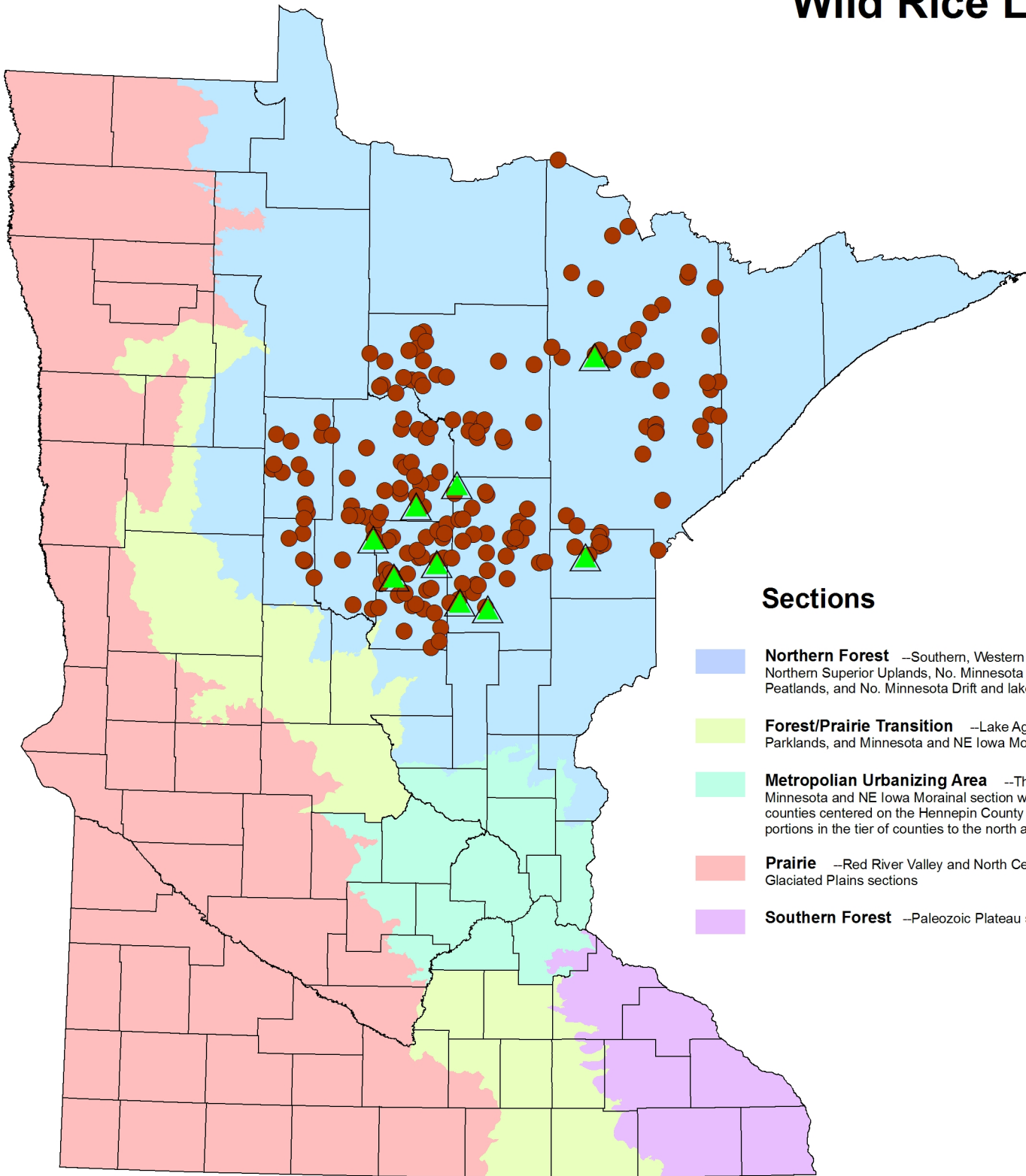
	Wetlands	Prairies	Forests	Habitats	Total
Acquired in Fee with State PILT Liability	20		180		200
Acquired in Fee without State PILT Liability					0
Permanent Easement NO State PILT Liability	80		720		800

**Table 7. Estimated Value of Acquisition by PILT Status (enter information in dollars)**

	Wetlands	Prairies	Forests	Habitats	Total
Acquired in Fee with State PILT Liability	\$ 70,000		\$ 630,000		\$ 700,000
Acquired in Fee without State PILT Liability					\$ -
Permanent Easement NO State PILT Liability	\$ 130,000		\$ 1,170,000		\$ 1,300,000

# L-SOHC Sections

## Shallow Lake Shoreland Protection: Wild Rice Lakes



### Sections

- Northern Forest** --Southern, Western and Northern Superior Uplands, No. Minnesota and Ontario Peatlands, and No. Minnesota Drift and lake Plains Sections
- Forest/Prairie Transition** --Lake Agassiz, Aspen Parklands, and Minnesota and NE Iowa Morainal Sections
- Metropolitan Urbanizing Area** --That portion of the Minnesota and NE Iowa Morainal section within the counties centered on the Hennepin County plus the portions in the tier of counties to the north and west
- Prairie** --Red River Valley and North Central Glaciated Plains sections
- Southern Forest** --Paleozoic Plateau sections

Potential DU Acquisition

Important Wild Rice Lake  
Potential RIM or DU Conservation Easement Location

**Attachment D. Parcel List**

**Shallow Lake Shoreline Protection: Wild Rice Lakes Parcel List**

**Ducks Unlimited Fee-Title Acquisition Parcel List**

Parcel Name	County	T	R	D	S	TRDS	Acres	ft of shoreline	Estimated Cost	Description	Activity R=Restore	Any existing protection?	Open to hunting and fishing? (yes/no)
Shovel Lake Tract	Aitkin	51	27	2	3	5127203	80	2500	\$150,000	DOW 01-020, could help secure public access to lake	P	No	Yes
Mallard Lake Tract	Aitkin	45	27	2	2	4527202	55.9	3500	\$100,000	DOW 01-0149, inside Ripple River WMA	P	No	Yes
Twenty Lake Tract	Aitkin	45	25	2	20,29	04525220,29	80	1000	\$150,000	DOW 01-0085, would also secure outlet access	P	No	Yes
Lake George Tract	Cass	140	26	2	31	14026231	34.5	500	\$200,000	DOW 11-0101, only private tract in 2.0 miles of county shoreline	P	No	Yes
Rice Lake Tract (Cass County side)	Cass	137	29	2	4	13729204	195.3	4000	\$400,000	DOW 11-1201, currently private lake	P	No	Yes
Rice Lake Tract (Crow Wing County side)	Crow Wing	137	29	2	3	13729203	29	500	\$50,000	DOW 11-1201, currently private lake	P	No	Yes
Garden/Johnson Lake Tract	Crow Wing	135	28	2	9	13528209	153.5	5000	\$400,000	DOW 18-0329 & 0328	P	No	Yes
Lower Dean Lake Tract	Crow Wing	136	25	2	17	13625217	66	4000	\$100,000	DOW 18-0181, would also secure outlet access	P	No	Yes
Kettle Lake Tract	Carlton	48	19	2	20	4819220	158	5000	\$300,000	DOW 09-0049 would protect entire southern lake side	P	No	Yes
Moose Lake Tract	St. Louis	60	19	2	26	6019226	108	1500	\$100,000	DOW 69-0798 would result in full protection of lake	P	No	Yes

**Important Wild Rice Lakes: List of 182 Lakes for Potential BWSR RIM or DU Conservation Easements**

Lake Name	County	T	R	D	S	TRDS	Acres	ft of shoreline	Estimated Cost	Description	R=Restore P=Protect	protection? (yes/no)	Open to hunting and fishing? (yes/no)
Aitkin	Aitkin	50	23	2	20	5023220	850.0	NA	NA	DOW# 1004000 Managed by USACOE	P	unknown	No
Big Sandy	Aitkin	50	23	2	32	5023232	9380.0	NA	NA	DOW# 01006200 Managed by USACOE	P	unknown	No
Elm Island	Aitkin	46	26	2	21	4626221	656.0	NA	NA	DOW# 01012300 Supports Recreational Harvesting	P	unknown	No
Flowage	Aitkin	49	24	2	25	4924225	720.0	NA	NA	DOW# 01006100 Managed by USACOE	P	unknown	No
Gun	Aitkin	48	25	2	16	4825216	735.0	NA	NA	DOW# 01009900 History of Rice Production	P	unknown	No
Mallard	Aitkin	45	27	2	2	452722	354.0	NA	NA	DOW# 01014900 Monitoring/Management by DNR/DU	P	unknown	No
Minnewawa	Aitkin	49	23	2	28	4923228	2451.0	NA	NA	DOW# 01003300 Supports Recreational Harvesting	P	unknown	No
Moose	Aitkin	51	26	2	33	5126233	148.0	NA	NA	DOW# 01014000 Monitoring/Management by DNR/DU	P	unknown	No
Moose River Pool	Aitkin	51	25	2	4	512524	900.0	NA	NA	DOW# 1035800 Managed byMNDNR - Wildlife	P	unknown	No
Moose Willow WMA - Willow Pool	Aitkin	52	25	2	32	5225232	300.0	NA	NA	DOW# 01043100 Managed byMNDNR - Wildlife	P	unknown	No
Mud	Aitkin	50	27	2	14	5027214	135.0	NA	NA	DOW# 01019400 Monitoring/Management by DNR/DU	P	unknown	No
Newstrom	Aitkin	47	25	2	16	4725216	97.0	NA	NA	DOW# 01009700 Monitoring/Management by DNR/DU	P	unknown	No
Rat	Aitkin	49	24	2	33	4924233	442.0	NA	NA	DOW# 01007700 Supports Recreational Harvesting	P	unknown	No
Rat House	Aitkin	51	23	2	35	5123235	122.0	NA	NA	DOW# 01005300 Monitoring/Management by DNR/DU	P	unknown	No
Red	Aitkin	49	25	2	9	492529	97.0	NA	NA	DOW# 01010700 Supports Recreational Harvesting	P	unknown	No
Rice	Aitkin	48	22	2	33	4822233	83.0	NA	NA	DOW# 01000500 Managed by MNDNR - Wildlife/DU	P	unknown	No
Rice	Aitkin	47	24	2	33	4724233	3635.0	NA	NA	DOW# 01006700 Managed byUSFWS	P	unknown	No
Ripple	Aitkin	46	26	2	18	4626218	676.0	NA	NA	DOW# 01014600 Supports Recreational Harvesting	P	unknown	No
Rock	Aitkin	48	24	2	22	4824222	366.0	NA	NA	DOW# 01007200 History of Rice Production	P	unknown	No
Salo Marsh State WMA Imp.	Aitkin	48	22	2	35	4822235	690.0	NA	NA	DOW# 01041500 Managed by MNDNR - Wildlife	P	unknown	No
Sandy River Lake	Aitkin	49	23	2	19	4923219	368.0	NA	NA	DOW# 01006000 Managed by USACOE	P	unknown	No
Section Ten	Aitkin	46	26	2	10	4626210	440.0	NA	NA	DOW# 01011500 Monitoring/Management by DNR/DU	P	unknown	No
Section Twelve	Aitkin	46	26	2	11	4626211	167.0	NA	NA	DOW# 01012000 Supports Recreational Harvesting	P	unknown	No
Shovel	Aitkin	51	27	2	3	512723	230.0	NA	NA	DOW# 01020000 Monitoring/Management by DNR/DU	P	unknown	No
Sjodin	Aitkin	46	26	2	27	4626227	43.0	NA	NA	DOW# 01031600 Supports Recreational Harvesting	P	unknown	No
Spruce	Aitkin	45	27	2	8	452728	80.0	NA	NA	DOW# 01015100 History of Rice Production	P	unknown	No
Twenty	Aitkin	45	25	2	20	4525220	153.0	NA	NA	DOW# 01008500 Monitoring/Management by DNR/DU	P	unknown	No
Unnamed - Little Willow River WM	Aitkin	49	27	2	25	4927225	140.0	NA	NA	DOW# 01033200 Monitoring/Management by DNR/DU	P	unknown	No
Waukenabo	Aitkin	49	26	2	15	4926215	819.0	NA	NA	DOW# 01013600 History of Rice Production	P	unknown	No
White Elk	Aitkin	50	27	2	24	5027224	780.0	NA	NA	DOW# 01014800 Monitoring/Management by DNR/DU	P	unknown	No
Dead Fish	Carlton	49	19	2	12	4919212	153.0	NA	NA	DOW# 09005100 Tribal Monitoring and Management	P	unknown	No

**Attachment D. Parcel List**

Island	Carlton	48	20	2	4	482024	456.0	NA	NA	DOW# 09006000 Supports Recreational Harvesting	P	unknown	No
Jaskari	Carlton	48	19	2	1	481921	74.0	NA	NA	DOW# 09005000 Tribal Monitoring and Management	P	unknown	No
Kettle	Carlton	48	19	2	20	4819220	611.0	NA	NA	DOW# 09004900 Monitoring/Management by DNR/DU	P	unknown	No
Miller	Carlton	49	19	2	14	4919214	156.0	NA	NA	DOW# 09005300 Tribal Monitoring and Management	P	unknown	No
Perch	Carlton	49	18	2	31	4918231	796.0	NA	NA	DOW# 09003600 Tribal Monitoring and Management	P	unknown	No
Rice Portage	Carlton	49	19	2	25	4919225	832.0	NA	NA	DOW# 09003700 Tribal Monitoring and Management	P	unknown	No
Beuber	Cass	139	30	2	7	1393027	135.0	NA	NA	DOW# 11035300 Supports Recreational Harvesting	P	unknown	No
Big Birch	Cass	141	25	2	5	1412525	255.0	NA	NA	DOW# 11001700 Monitoring/Management by DNR/DU	P	unknown	No
Big Rice	Cass	141	26	2	26	14126226	2717.0	NA	NA	DOW# 11007300 Monitoring/Management by DNR/DU	P	unknown	No
Boy	Cass	142	28	2	25	14228225	5544.0	NA	NA	DOW# 11014300 Tribal Monitoring and Management	P	unknown	No
Brockway	Cass	139	30	2	26	13930226	182.0	NA	NA	DOW# 11036600 Supports Recreational Harvesting	P	unknown	No
Chub	Cass	144	27	2	25	14427225	57.0	NA	NA	DOW# 11051700 Tribal Monitoring and Management	P	unknown	No
Drumbeater	Cass	144	28	2	25	14428225	376.0	NA	NA	DOW# 11014500 Tribal and MNDNR - Wildlife Management	P	unknown	No
Farnham	Cass	135	32	2	18	13532218	142.0	NA	NA	DOW# 11051300 Monitoring/Management by DNR/DU	P	unknown	No
George	Cass	139	26	2	6	1392626	720.0	NA	NA	DOW# 11010100 Monitoring/Management by DNR/DU	P	unknown	No
Goose	Cass	143	26	2	9	1432629	844.0	NA	NA	DOW# 11009600 Managed by MNDNR - Wildlife	P	unknown	No
Hattie	Cass	139	29	2	31	13929231	592.0	NA	NA	DOW# 11023200 History of Rice Production	P	unknown	No
Island	Cass	140	27	2	24	14027224	390.0	NA	NA	DOW# 11010200 Supports Recreational Harvesting	P	unknown	No
Laura	Cass	141	26	2	31	14126231	1424.0	NA	NA	DOW# 11010400 Monitoring/Management by DNR/DU	P	unknown	No
Leech	Cass	143	30	2	25	14330225	#####	NA	NA	DOW# 11020300 Managed by USACOE	P	unknown	No
Lind (Lindsey)	Cass	139	30	2	28	13930228	462.0	NA	NA	DOW# 11036700 Supports Recreational Harvesting	P	unknown	No
Lizotte	Cass	138	29	2	21	13829221	75.0	NA	NA	DOW# 11023100 Managed by MNDNR - Wildlife	P	unknown	No
Lomish	Cass	142	27	2	32	14227232	282.0	NA	NA	DOW# 11013600 Tribal Monitoring and Management	P	unknown	No
Lower Hand	Cass	139	29	2	23	13929223	122.0	NA	NA	DOW# 11025100 Monitoring/Management by DNR/DU	P	unknown	No
McCarthy	Cass	140	28	2	13	14028213	194.0	NA	NA	DOW# 11016800 History of Rice Production	P	unknown	No
Moose	Cass	136	31	2	15	13631215	92.0	NA	NA	DOW# 11042400 Supports Recreational Harvesting	P	unknown	No
Mud	Cass	144	26	2	22	14426222	1440.0	NA	NA	DOW# 11010000 Managed by MNDNR - Wildlife	P	unknown	No
Pine Mountain	Cass	139	31	2	25	13931225	1657.0	NA	NA	DOW# 11041100 History of Rice Production	P	unknown	No
Portage	Cass	141	31	2	24	14131224	277.0	NA	NA	DOW# 11047600 Supports Recreational Harvesting	P	unknown	No
Rice	Cass	140	28	2	1	1402821	342.0	NA	NA	DOW# 11016200 History of Rice Production	P	unknown	No
Rice (Carrol's)	Cass	137	29	2	4	1372924	46.0	NA	NA	DOW# 11022700 History of Rice Production	P	unknown	No
Rice (Pillager)	Cass	134	30	2	32	13430232	232.0	NA	NA	DOW# 11032100 Monitoring/Management by DNR/DU	P	unknown	No
Six Mile	Cass	144	27	2	6	1442726	1288.0	NA	NA	DOW# 11014600 Managed by USFS	P	unknown	No
Swift	Cass	142	27	2	22	14227222	359.0	NA	NA	DOW# 11013300 History of Rice Production	P	unknown	No
Twin	Cass	141	27	2	14	14127214	297.0	NA	NA	DOW# 11012300 Monitoring/Management by DNR/DU	P	unknown	No
Washburn	Cass	139	26	2	8	1392628	1768.0	NA	NA	DOW# 11005900 History of Rice Production	P	unknown	No
Winnibigoshish	Cass	146	28	2	22	14628222	69821.0	NA	NA	DOW# 11014700 Managed by USACOE	P	unknown	No
Woman	Cass	140	29	2	12	14029212	5360.0	NA	NA	DOW# 11020100 Monitoring/Management by DNR/DU	P	unknown	No
Arrowhead	Crow Wing	137	28	2	3	1372823	285.0	NA	NA	DOW# 18036600 Managed by USACOE	P	unknown	No
Birchdale	Crow Wing	138	25	2	33	13825233	80.0	NA	NA	DOW# 18017500 Monitoring/Management by DNR/DU	P	unknown	No
Dahler	Crow Wing	138	26	2	33	13826233	277.0	NA	NA	DOW# 18020400 Monitoring/Management by DNR/DU	P	unknown	No
Dog	Crow Wing	45	29	2	27	4529227	71.0	NA	NA	DOW# 18010700 Monitoring/Management by DNR/DU	P	unknown	No
Duck	Crow Wing	138	25	2	19	13825219	310.0	NA	NA	DOW# 18017800 Monitoring/Management by DNR/DU	P	unknown	No
Garden	Crow Wing	135	28	2	9	1352829	262.0	NA	NA	DOW# 18032900 Monitoring/Management by DNR/DU	P	unknown	No
Google	Crow Wing	136	27	2	1	1362721	107.0	NA	NA	DOW# 18022300 Supports Recreational Harvesting	P	unknown	No
Hole- in-the-Day	Crow Wing	135	29	2	26	13529226	217.0	NA	NA	DOW# 18040100 Managed by MNDNR - Wildlife	P	unknown	No
Little Pine	Crow Wing	138	25	2	2	1382522	135.0	NA	NA	DOW# 18017600 Monitoring/Management by DNR/DU	P	unknown	No
Lizzie	Crow Wing	138	29	2	3	2382923	384.0	NA	NA	DOW# 18041600 Supports Recreational Harvesting	P	unknown	No
Lower Dean	Crow Wing	136	25	2	7	1362527	372.0	NA	NA	DOW# 18018100 Monitoring/Management by DNR/DU	P	unknown	No
Lower Mission	Crow Wing	135	27	2	5	1352725	739.0	NA	NA	DOW# 18024300 Monitoring/Management by DNR/DU	P	unknown	No
Lows	Crow Wing	138	25	2	27	13825227	320.0	NA	NA	DOW# 18018000 Monitoring/Management by DNR/DU	P	unknown	No



**Attachment D. Parcel List**

Middle Cullen	Crow Wing	136	28	2	31	13628231	405.0	NA	NA	DOW# 18037700	History of Rice Production	P	unknown	No
Mud	Crow Wing	45	30	2	24	4530224	132.0	NA	NA	DOW# 18013700	Monitoring/Management by DNR/DU	P	unknown	No
Mud	Crow Wing	135	28	2	4	1352824	82.0	NA	NA	DOW# 18032600	History of Rice Production	P	unknown	No
Nelson	Crow Wing	136	25	2	3	1362523	323.0	NA	NA	DOW# 18016400	History of Rice Production	P	unknown	No
Pine	Crow Wing	137	27	2	33	13727233	391.0	NA	NA	DOW# 18026100	History of Rice Production	P	unknown	No
Platte	Crow Wing	43	28	2	31	4328231	1768.0	NA	NA	DOW# 18008800	Monitoring/Management by DNR/DU	P	unknown	No
Rice (Blomberg's)	Crow Wing	46	29	2	23	4629223	78.0	NA	NA	DOW# 18012100	History of Rice Production	P	unknown	No
Rice (Clark Lake)	Crow Wing	135	28	2	18	13528218	181.0	NA	NA	DOW# 18032700	Monitoring/Management by DNR/DU	P	unknown	No
Rice (Deerwood)	Crow Wing	46	28	2	18	4628218	185.0	NA	NA	DOW# 18006800	Monitoring/Management by DNR/DU	P	unknown	No
Rice (Hesitation WMA)	Crow Wing	45	28	2	32	4528232	168.0	NA	NA	DOW# 18005300	Monitoring/Management by DNR/DU	P	unknown	No
Rice (Pratt's)	Crow Wing	134	28	2	14	13428214	100.0	NA	NA	DOW# 18031600	Managed by MNDNR - Wildlife	P	unknown	No
Rice Bed	Crow Wing	136	26	2	6	1362626	50.0	NA	NA	DOW# 18018700	Managed by MNDNR - Wildlife	P	unknown	No
Smith	Crow Wing	44	28	2	27	4428227	486.0	NA	NA	DOW# 18002800	History of Rice Production	P	unknown	No
Terry	Crow Wing	136	25	2	1	1362521	102.0	NA	NA	DOW# 18016200	Monitoring/Management by DNR/DU	P	unknown	No
Twentytwo	Crow Wing	43	28	2	22	4328222	169.0	NA	NA	DOW# 18000800	History of Rice Production	P	unknown	No
Twin Island	Crow Wing	45	29	2	17	4529217	85.0	NA	NA	DOW# 18010600	History of Rice Production	P	unknown	No
Unnamed (Lost Rice)	Crow Wing	137	27	2	25	13727225	157.0	NA	NA	DOW# 18022800	Monitoring/Management by DNR/DU	P	unknown	No
Unnamed (Nokasippi R. Rice Bed)	Crow Wing	44	30	2	34	4430234	166.0	NA	NA	DOW# 18048500	History of Rice Production	P	unknown	No
Upper Whitefish	Crow Wing	137	28	2	8	1372828	7969.0	NA	NA	DOW# 18031000	Managed by USACOE	P	unknown	No
Whipple	Crow Wing	133	29	2	3	1332923	345.0	NA	NA	DOW# 18038700	History of Rice Production	P	unknown	No
Crow Wing	Hubbard	141	33	2	28	14133228	47.0	NA	NA	DOW# 29011600	Supports Recreational Harvesting	P	unknown	No
First Crow Wing	Hubbard	139	33	2	22	13933222	564.0	NA	NA	DOW# 29008600	Supports Recreational Harvesting	P	unknown	No
Fourth Crow Wing	Hubbard	139	33	2	9	1393329	523.0	NA	NA	DOW# 29007800	Supports Recreational Harvesting	P	unknown	No
Garfield	Hubbard	143	32	2	4	1433224	984.0	NA	NA	DOW# 29006100	Supports Recreational Harvesting	P	unknown	No
Hart	Hubbard	144	32	2	16	14432216	236.0	NA	NA	DOW# 29006300	Supports Recreational Harvesting	P	unknown	No
Island	Hubbard	141	35	2	10	14135210	522.0	NA	NA	DOW# 29025400	County Monitoring/Management	P	unknown	No
Lake Alice	Hubbard	143	35	2	11	14335211	150.0	NA	NA	DOW# 29028600	County Monitoring/Management	P	unknown	No
Lake George	Hubbard	143	34	2	22	14334222	882.0	NA	NA	DOW# 29021600	Supports Recreational Harvesting	P	unknown	No
Mantrap	Hubbard	142	33	2	31	14233231	1770.0	NA	NA	DOW# 29015100	Supports Recreational Harvesting	P	unknown	No
Rice	Hubbard	141	34	2	18	14134218	230.0	NA	NA	DOW# 29017700	Monitoring/Management by DNR/DU	P	unknown	No
Spring Lake	Hubbard	143	32	2	1	1433221	43.0	NA	NA	DOW# 29005400	Supports Recreational Harvesting	P	unknown	No
Third Crow Wing	Hubbard	139	33	2	16	13933216	636.0	NA	NA	DOW# 29007700	History of Rice Production	P	unknown	No
Upper Mud	Hubbard	142	35	2	34	14235234	50.0	NA	NA	DOW# 29028400	Monitoring/Management by DNR/DU	P	unknown	No
Bass	Itasca	56	26	2	21	5626221	2844.0	NA	NA	DOW# 31057600	Managed by MNDNR - Waters	P	unknown	No
Blackberry	Itasca	55	24	2	33	5524233	240.0	NA	NA	DOW# 31021000	Monitoring/Management by DNR/DU	P	unknown	No
Blackwater	Itasca	55	26	2	8	552628	674.0	NA	NA	DOW# 31056100	Managed by USACOE	P	unknown	No
Bowstring	Itasca	147	26	2	24	14726224	8900.0	NA	NA	DOW# 31081300	Supports Recreational Harvesting	P	unknown	No
Cut Foot Sioux	Itasca	147	27	2	27	14727227	3222.0	NA	NA	DOW# 31085700	Managed by USACOE	P	unknown	No
Decker	Itasca	148	29	2	18	14829218	292.0	NA	NA	DOW# 31093400	Monitoring/Management by DNR/DU	P	unknown	No
Dixon	Itasca	148	29	2	25	14829225	666.0	NA	NA	DOW# 31092100	Managed by MNDNR - Wildlife	P	unknown	No
Dora	Itasca	149	27	2	12	14927212	477.0	NA	NA	DOW# 31088200	Supports Recreational Harvesting	P	unknown	No
First River	Itasca	146	26	2	8	1462628	228.0	NA	NA	DOW# 31081800	Managed by USACOE	P	unknown	No
Helen	Itasca	149	26	2	21	14926221	109.0	NA	NA	DOW# 31084000	History of Rice Production	P	unknown	No
Little Cut Foot Sioux	Itasca	147	27	2	25	14727225	1357.0	NA	NA	DOW# 31085200	Managed by USACOE	P	unknown	No
Mud	Itasca	55	24	2	20	5524220	271.0	NA	NA	DOW# 31020600	Monitoring/Management by DNR/DU	P	unknown	No
Nagel	Itasca	55	25	2	6	552526	90.0	NA	NA	DOW# 31037700	Monitoring/Management by DNR/DU	P	unknown	No
Natures	Itasca	148	27	2	4	1482724	2885.0	NA	NA	DOW# 31087700	Supports Recreational Harvesting	P	unknown	No
Pigeon Dam	Itasca	147	27	2	19	14727219	511.0	NA	NA	DOW# 31089400	Managed by MNDNR - Wildlife	P	unknown	No
Pokegama	Itasca	55	26	2	26	5526226	15600.0	NA	NA	DOW# 31053200	Managed by USACOE	P	unknown	No
Prairie	Itasca	59	22	2	7	592227	29.0	NA	NA	DOW# 31005300	Supports Recreational Harvesting	P	unknown	No
Prairie	Itasca	56	25	2	20	5625220	1167.0	NA	NA	DOW# 31038400	History of Rice Production	P	unknown	No

**Attachment D. Parcel List**

Rabbits	Itasca	146	29	2	2	1462922	209.0	NA	NA	DOW# 31092300 History of Rice Production	P	unknown	No
Raven	Itasca	146	29	2	11	14629211	97.0	NA	NA	DOW# 31092500 Monitoring/Management by DNR/DU	P	unknown	No
Rice	Itasca	148	27	2	1	1482721	911.0	NA	NA	DOW# 31087600 Supports Recreational Harvesting	P	unknown	No
Sand	Itasca	148	26	2	29	14826229	3391.0	NA	NA	DOW# 31082600 History of Rice Production	P	unknown	No
Spruce	Itasca	59	24	2	7	592427	58.0	NA	NA	DOW# 31034700 History of Rice Production	P	unknown	No
Swan	Itasca	56	22	2	30	5622230	2472.0	NA	NA	DOW# 31006700 Supports Recreational Harvesting	P	unknown	No
White Oak	Itasca	144	25	2	1	1442521	905.0	NA	NA	DOW# 31077600 Managed by USACOE	P	unknown	No
Bear	St. Louis	55	12	2	31	5512232	125.0	NA	NA	DOW# 69011200 History of Rice Production	P	unknown	No
Big Rice	St. Louis	60	17	2	10	6017210	2072.0	NA	NA	DOW# 69066900 Managed by MNDNR - Wildlife	P	unknown	No
Big Rice	St. Louis	64	13	2	17	6413217	416.0	NA	NA	DOW# 69017800 Monitoring/Management by DNR/DU	P	unknown	No
Birch	St. Louis	61	12	2	28	6112228	7628.0	NA	NA	DOW# 69000300 Supports Recreational Harvesting	P	unknown	No
Breda	St. Louis	56	12	2	16	5612216	137.0	NA	NA	DOW# 69003700 Monitoring/Management by DNR/DU	P	unknown	No
Bug	St. Louis	54	16	2	21	5416221	71.0	NA	NA	DOW# 69053100 History of Rice Production	P	unknown	No
Butterball	St. Louis	58	12	2	33	5812233	442.0	NA	NA	DOW# 69004400 Managed by MNDNR - Wildlife	P	unknown	No
Canosia WMA, Angell Pool	St. Louis	51	15	2	15	5115215	500.0	NA	NA	DOW# W0889001 Managed by MNDNR - Wildlife	P	unknown	No
Crane	St. Louis	67	17	2	14	6717214	3396.0	NA	NA	DOW# 69061600 Supports Recreational Harvesting	P	unknown	No
Dollar	St. Louis	55	16	2	2	551622	51.0	NA	NA	DOW# 69053400 Managed by MNDNR - Wildlife	P	unknown	No
Hay	St. Louis	56	15	2	32	5615232	82.0	NA	NA	DOW# 69041700 History of Rice Production	P	unknown	No
Hay	St. Louis	59	16	2	29	5916229	114.0	NA	NA	DOW# 69057900 Managed by MNDNR - Wildlife	P	unknown	No
Hay	St. Louis	59	15	2	8	591528	78.0	NA	NA	DOW# 69043500 Managed by MNDNR - Wildlife	P	unknown	No
Hockey	St. Louis	50	20	2	27	5020227	139.0	NA	NA	DOW# 69084900 Supports Recreational Harvesting	P	unknown	No
Hoodoo	St. Louis	63	19	2	1	631921	252.0	NA	NA	DOW# 69080200 Monitoring/Management by DNR/DU	P	unknown	No
Lapond	St. Louis	64	13	2	5	641325	176.0	NA	NA	DOW# 69017700 Monitoring/Management by DNR/DU	P	unknown	No
Leeman	St. Louis	50	21	2	12	5021212	284.0	NA	NA	DOW# 69087500 History of Rice Production	P	unknown	No
Little Rice	St. Louis	61	16	2	31	6116231	266.0	NA	NA	DOW# 69061200 Managed by MNDNR - Wildlife	P	unknown	No
Little Sandy	St. Louis	59	18	2	10	5918210	89.0	NA	NA	DOW# 69072900 History of Rice Production	P	unknown	No
Low	St. Louis	63	12	2	2	631222	353.0	NA	NA	DOW# 69007000 Supports Recreational Harvesting	P	unknown	No
Moose	St. Louis	60	19	2	35	6019235	82.0	NA	NA	DOW# 69079800 Managed by MNDNR - Wildlife	P	unknown	No
Mud	St. Louis	60	19	2	24	6019224	43.0	NA	NA	DOW# 69079700 Managed by MNDNR - Wildlife	P	unknown	No
Pelican	St. Louis	64	20	2	4	642024	11944.0	NA	NA	DOW# 69084100 Supports Recreational Harvesting	P	unknown	No
Rainy	St. Louis	71	21	2	22	7121222	#####	NA	NA	DOW# 69069400 Supports Recreational Harvesting	P	unknown	No
Rice	St. Louis	59	16	2	27	5916227	41.0	NA	NA	DOW# 69057800Managed by MNDNR - Wildlife	P	unknown	No
Sandy	St. Louis	59	18	2	2	591822	121.0	NA	NA	DOW# 69073000Managed by MNDNR	P	unknown	No
Seven Beaver	St. Louis	58	12	2	24	5812224	1508.0	NA	NA	DOW# 69000200Managed by USFS	P	unknown	No
Shannon	St. Louis	59	21	2	2	592122	135.0	NA	NA	DOW# 69092500 Monitoring/Management by DNR/DU	P	unknown	No
Stone	St. Louis	56	12	2	24	5612224	87.0	NA	NA	DOW# 69003500 Monitoring/Management by DNR/DU	P	unknown	No
Stone	St. Louis	58	12	2	20	5812220	230.0	NA	NA	DOW# 69004600 Managed by MNDNR - Wildlife	P	unknown	No
Sturgeon	St. Louis	60	21	2	7	602127	2050.0	NA	NA	DOW# 69093900 Managed by County	P	unknown	No
Turpela	St. Louis	58	15	2	34	5815234	76.0	NA	NA	DOW# 69042700 Monitoring/Management by DNR/DU	P	unknown	No
Vermilion	St. Louis	62	15	2	18	6215218	49110.0	NA	NA	DOW# 69037800 History of Rice Production	P	unknown	No
Vermilion (Rice Bay)	St. Louis	63	15	2	35	6315235	49110.0	NA	NA	DOW# 69037800 History of Rice Production	P	unknown	No
Wabuse	St. Louis	55	15	2	17	5515217	64.0	NA	NA	DOW# 69040800 Managed by MNDNR - Wildlife	P	unknown	No
Washusk Number One	St. Louis	55	15	2	18	5515218	51.0	NA	NA	DOW# 69040900 Managed by MNDNR - Wildlife	P	unknown	No
Wolf	St. Louis	55	13	2	2	551322	456.0	NA	NA	DOW# 69014300 Monitoring/Management by DNR/DU	P	unknown	No
Burgen	Wadena	138	33	2	33	13833233	92.0	NA	NA	DOW# 80001800 Managed by MNDNR - Wildlife	P	unknown	No
Granning	Wadena	136	33	2	16	13633216	50.0	NA	NA	DOW# 80001200 History of Rice Production	P	unknown	No
Round	Wadena	138	33	2	4	1383324	58.0	NA	NA	DOW# 80001900 Monitoring/Management by DNR/DU	P	unknown	No
Strike	Wadena	136	33	2	16	13633216	76.0	NA	NA	DOW# 80001300 History of Rice Production	P	unknown	No
Yaeger	Wadena	137	34	2	3	1373423	384.0	NA	NA	DOW# 80002200 Monitoring/Management by DNR/DU	P	unknown	No